

BUYER'S MODEL NO. CE-100 ,CE-200

FACTORY MODEL 22060 , 22160 , 221S0

ORIGINAL ISSUE

MARCH, 2004

SECTION ----

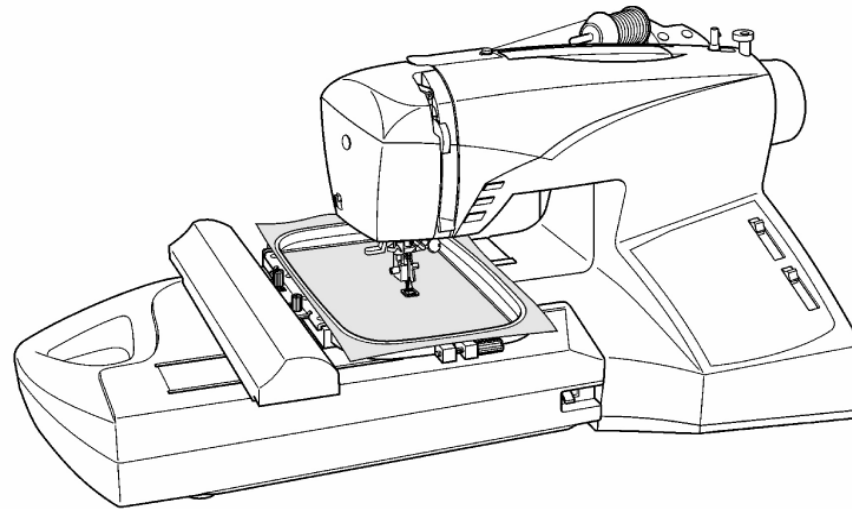
REVISION

FEBRUARY, 2007

REFER TO IMPORTANT NOTICE BELOW

PARTS LIST FOR

*--futura*TM *Quantum*[®] *--futura*TM
 CE-100 CE-200

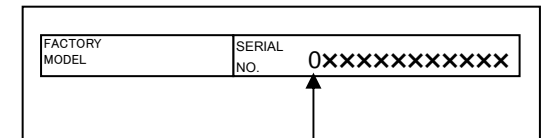


SINGER

IMPORTANT:

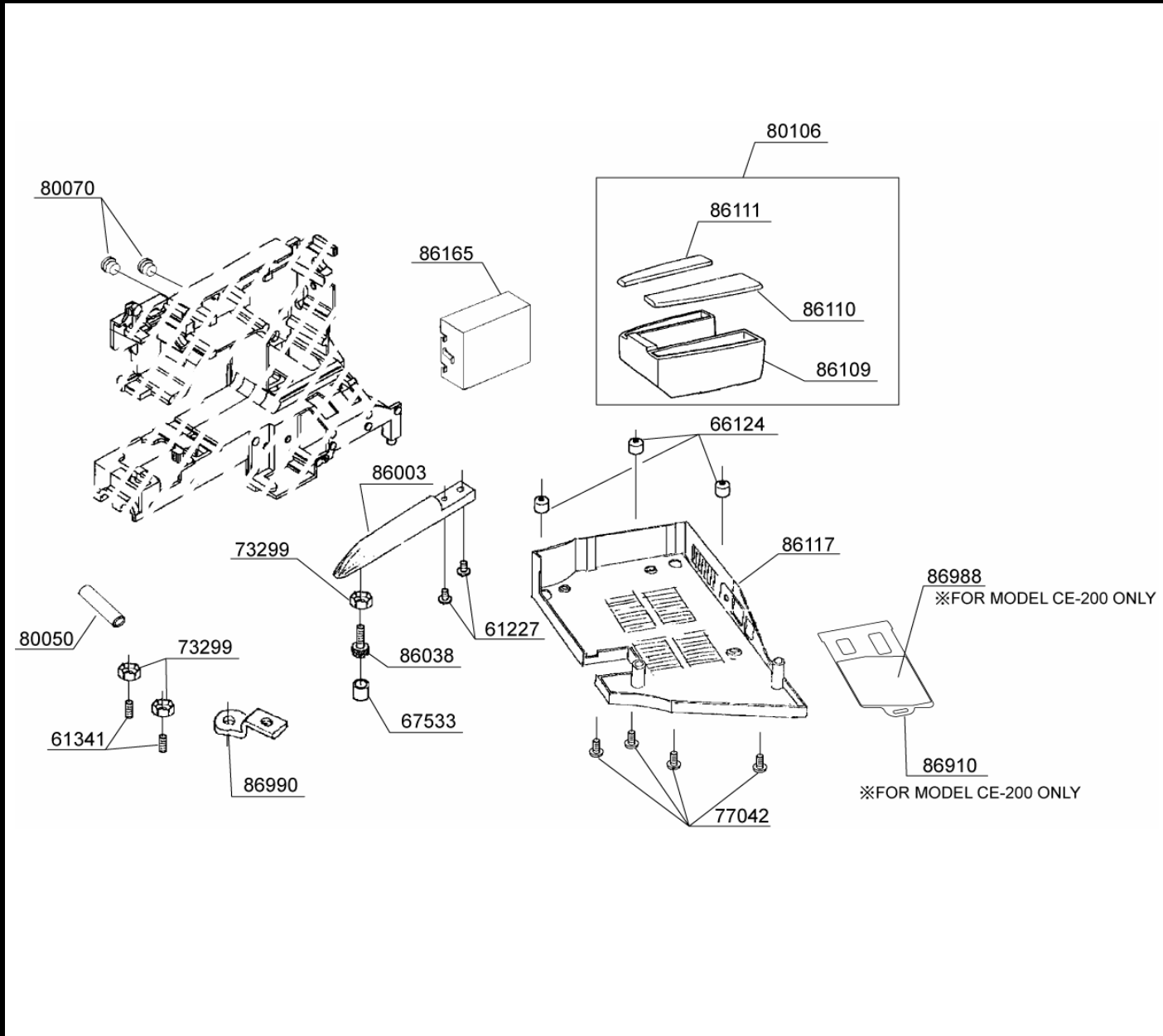
WHEN ORDERING THE PARTS ALWAYS CHECK THE SERIAL NUMBER OF THE MACHINE.

FIRST DIGIT OF THE SERIAL NUMBER MUST MATCH WITH THE LAST DIGIT OF THE FACTOR MODEL ABOVE.



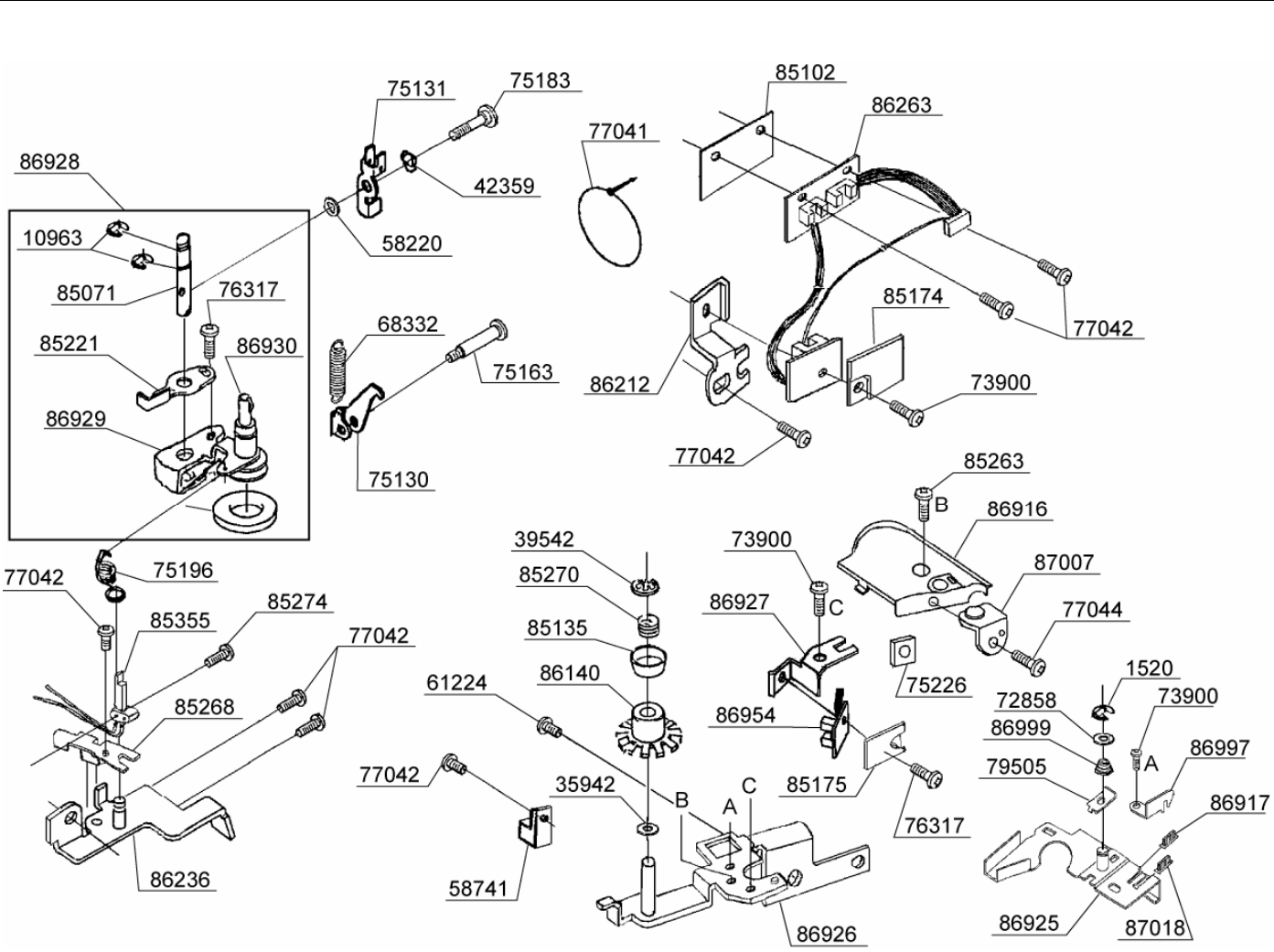
FIRST DIGIT

BUYER'S MODEL NO.	CE-100 , CE-200	SECTION	PAGE	REVISION	REMARKS	PART NO.	DESCRIPTION	
BUYER'S MODEL NAME	CE-100 : futura		1	February, 2007		61227	E6 PHILLIPS SCREW	
	CE-200 : Quantum futura					61341	M4 SCREW	
FACTORY MODEL	22060,22160,221S0						66124	RUBBER FOOT
ORIGINAL ISSUE	MARCH, 2004			SERIAL NO.			67533	RUBBER CUSHION



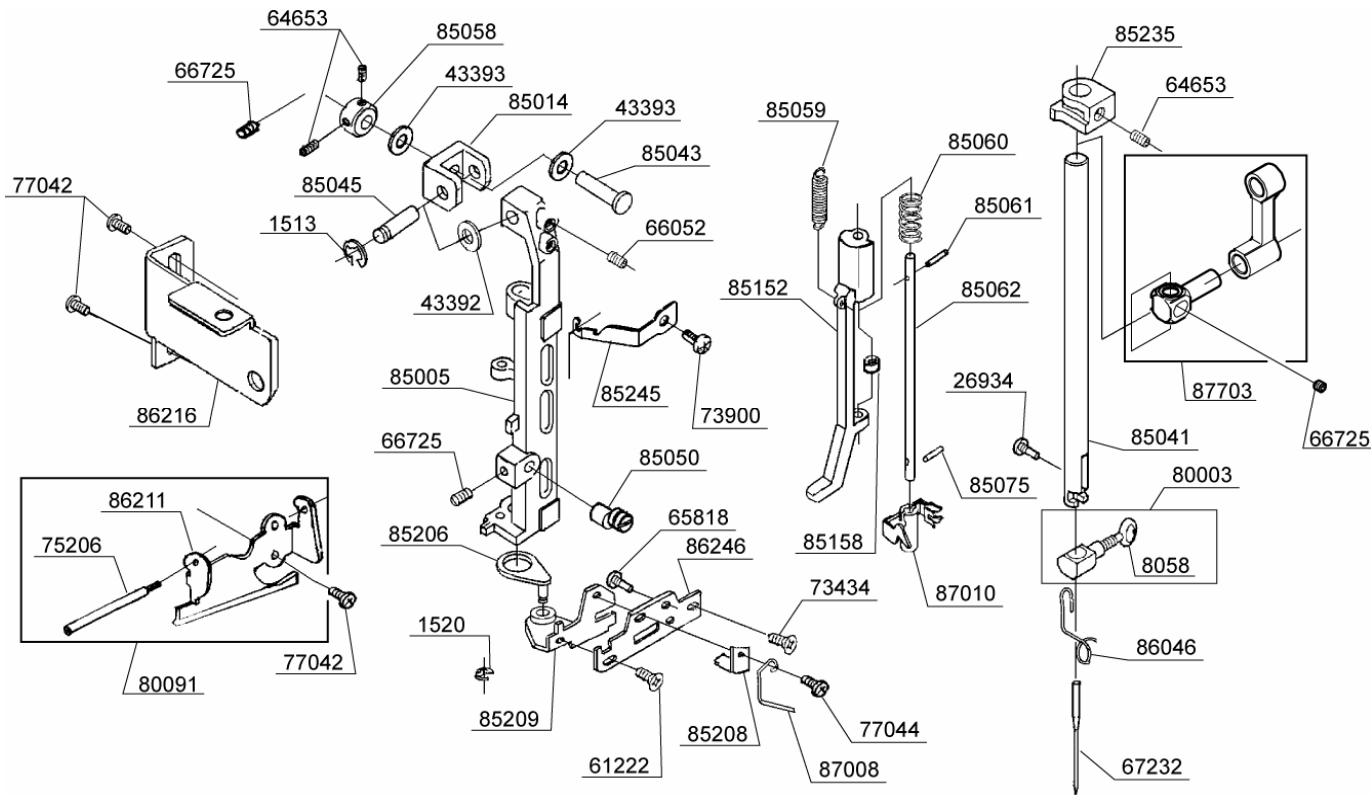
61227	E6 PHILLIPS SCREW
61341	M4 SCREW
66124	RUBBER FOOT
67533	RUBBER CUSHION
73299	M4 TORQUE NUT
77042	M4 PHILLIPS SCREW
80050	TUBE
80070	COLLAR
80106	ACCESSORY BOX SET
86003	LEG
86038	STUD SCREW
86109	ACCESSORY BOX
86110	ACC.BOX COVER B
86111	ACC.BOX COVER A
86117	BOTTOM COVER
86165	INSULATION BOX
86910	PATTERN DRAWER (FOR MODEL CE-200)
86988	SEAL (FOR MODEL CE-200)
86990	SECURING PLATE

BUYER'S MODEL NO.	CE-100 , CE-200	SECTION	PAGE	REVISION	REMARKS	PART NO	DESCRIPTION	
BUYER'S MODEL NAME	CE-100 : futura		3	February, 2007		1520	E3 CLIP-ON-WASHER	
	CE-200 : Quantum futura						10963	E6 CLIP-ON-WASHER
FACTORY MODEL	22060,22160,221S0						35942	WASHER
ORIGINAL ISSUE	MARCH, 2004	SERIAL NO.				39542	CLIP-ON-WASHER	



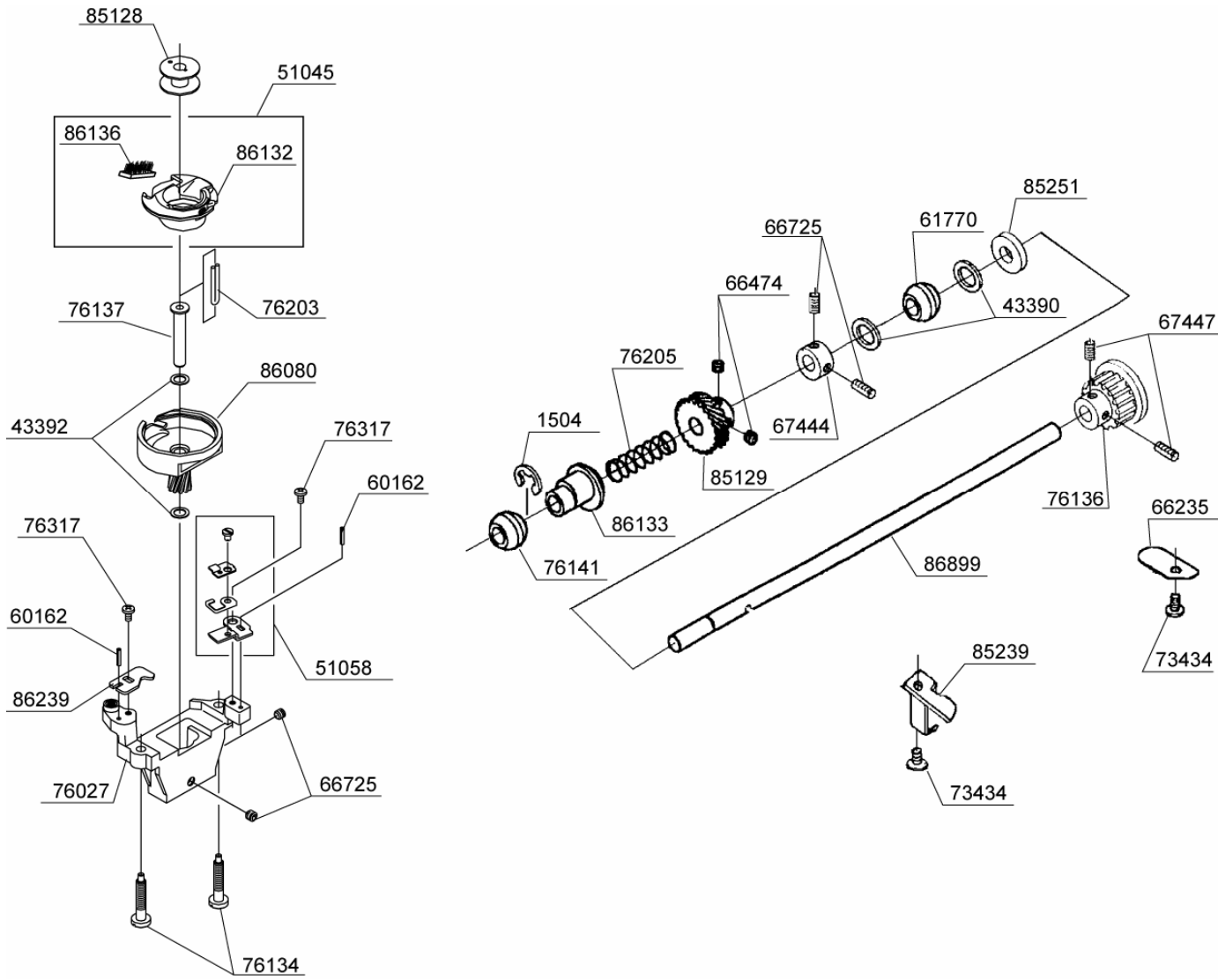
1520	E3 CLIP-ON-WASHER
10963	E6 CLIP-ON-WASHER
35942	WASHER
39542	CLIP-ON-WASHER
42359	CRINKLE WASHER
58220	WASHER
58741	CORD GUARD
61224	M4 PHILLIPS SCREW
68332	EXTENSION SPRING
72858	WASHER
73900	M3 SCREW
75130	RATCHET A
75131	RATCHET B
75163	M4 STUD SCREW
75183	M4 STUD SCREW
75196	TORSION SPRING
75226	SQUARE NUT
76317	M3 PHILLIPS SCREW
77041	UNIT Y FASTENER
77042	M4 PHILLIPS SCREW
77044	M3 PHILLIPS SCREW
79505	THREAD REGULATE PLATE
85071	SHAFT#8
85102	PROTECTION SHEET
85135	END CAP
85174	COVER
85175	COVER
85221	ABUTMENT LEVER
85263	M3 PHILLIPS SCREW
85268	SENSOR BRACKET
85270	COIL SPRING
85274	M2 SCREW
85355	SENSOR HARNESS
86140	SENSOR WHEEL
86212	ENCODER FIXING PLATE
86236	BASE PLATE
86263	MAIN SHAFT SENSOR HARNESS
86916	TENSION SENSOR COVER
86917	BRUSH
86925	THREAD PLATE
86926	SECURING PLATE
86927	SECURING PLATE
86928	BOBBIN WINDER COMPLETE
86929	BOBBIN WINDER BASE
86930	BOBBIN WINDER SHAFT
86954	THREAD SENSOR
86997	THREAD GUIDE PLATE
86999	SPRING
87007	THREAD GUIDE
87018	BRUSH

BUYER'S MODEL NO.	CE-100 , CE-200	SECTION	PAGE	REVISION	REMARKS	PART NO	DESCRIPTION	
BUYER'S MODEL NAME	CE-100 : futura		4	February, 2007		1513	E4 CLIP-ON-WASHER	
	CE-200 : Quantum futura						1520	E3 CLIP-ON-WASHER
FACTORY MODEL	22060,22160,221S0						8058	NEEDLE CLAMP SCREW
ORIGINAL ISSUE	MARCH, 2004		SERIAL NO.			26934	#8 SCREW	



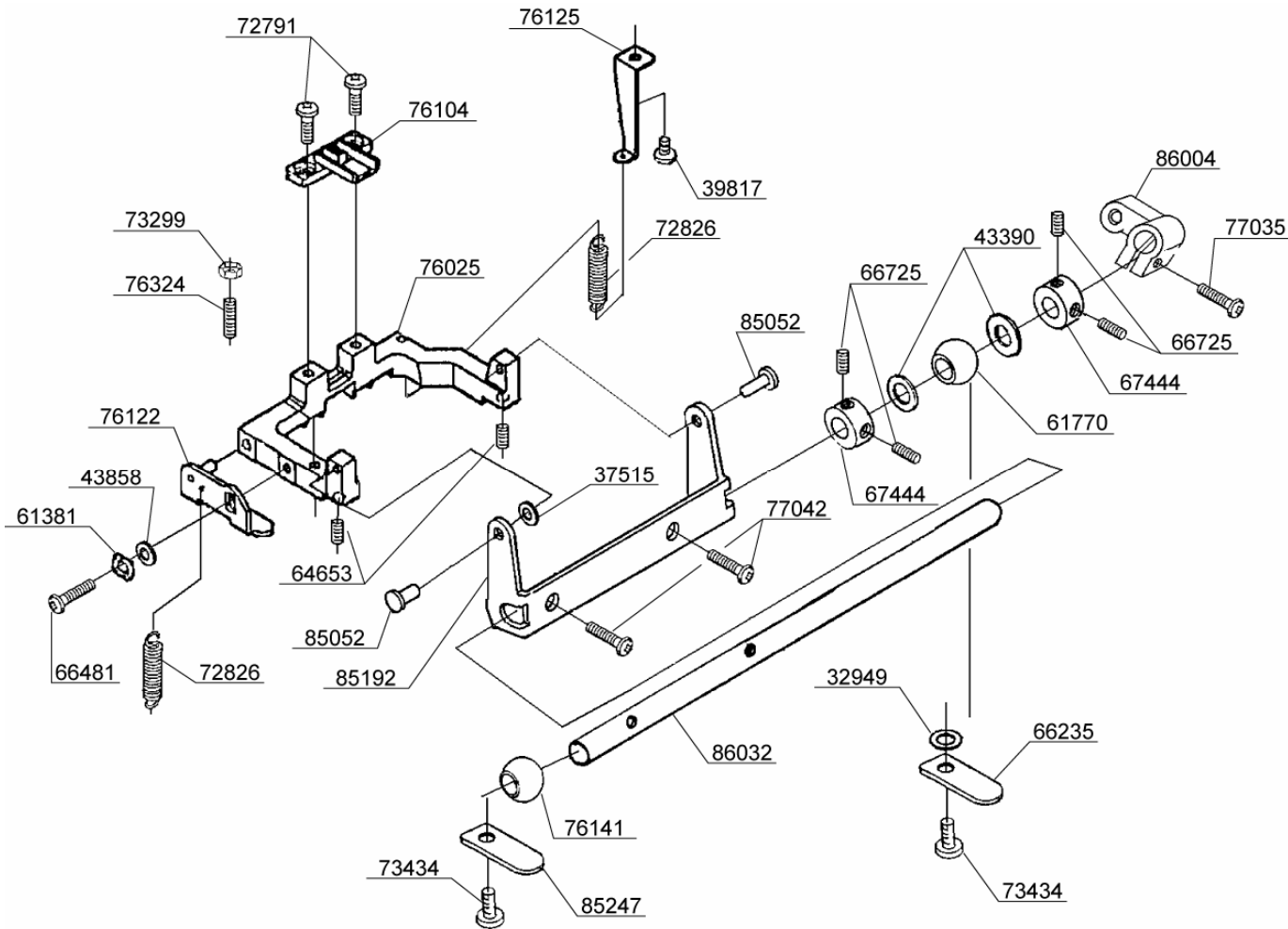
43392	THRUST WASHER
43393	WASHER
61222	M4 PHILLIPS SCREW
64653	M3 SCREW
65818	M4 BOLT
66052	M4 SCREW
66725	M4 SCREW
67232	NEEDLE
73434	M4 PHILLIPS SCREW
73900	M3 SCREW
75206	SPOOL PIN
77042	M4 PHILLIPS SCREW
77044	M3 PHILLIPS SCREW
80003	NEEDLE CLAMP SET
80091	THREAD GUIDE PLATE SET
85005	NEEDLE BAR SUPPORT
85014	FULCRUM BLOCK
85041	NEEDLE BAR
85043	HEADED PIN
85045	PIN
85050	ECCENTRIC
85058	COLLAR
85059	EXTENSION SPRING
85060	COMPRESSION SPRING
85061	SPRING PIN
85062	THREADER SHAFT SET
85075	SPRING PIN
85152	LEVER
85158	COLLAR
85206	SUPPORT PLATE
85208	PLATE
85209	SUPPORT PLATE
85235	STOPPER
85245	LEFT SPRING
86046	THREAD GUIDE
86211	THREAD GUIDE PLATE
86216	COVER MOUNTING PLATE
86246	SUPPORT PLATE
87008	WIRE SPRING
87010	THREADER ASSEMBLY
87703	NEEDLE BAR CLAMP SET

BUYER'S MODEL NO.	CE-100 , CE-200	SECTION	PAGE	REVISION	REMARKS	PART NO	DESCRIPTION
BUYER'S MODEL NAME	CE-100 : futura		7	JUNE, 2004		1504	E7 CLIP-ON-WASHER
	CE-200 : Quantum futura			SEPTEMBER, 2004		43390	THRUST WASHER
FACTORY MODEL	22060,22160,221S0			AUGUST ,2005		43392	THRUST WASHER
ORIGINAL ISSUE	MARCH, 2004	SERIAL NO.		February, 2007		51045	BOBBIN CASE SET



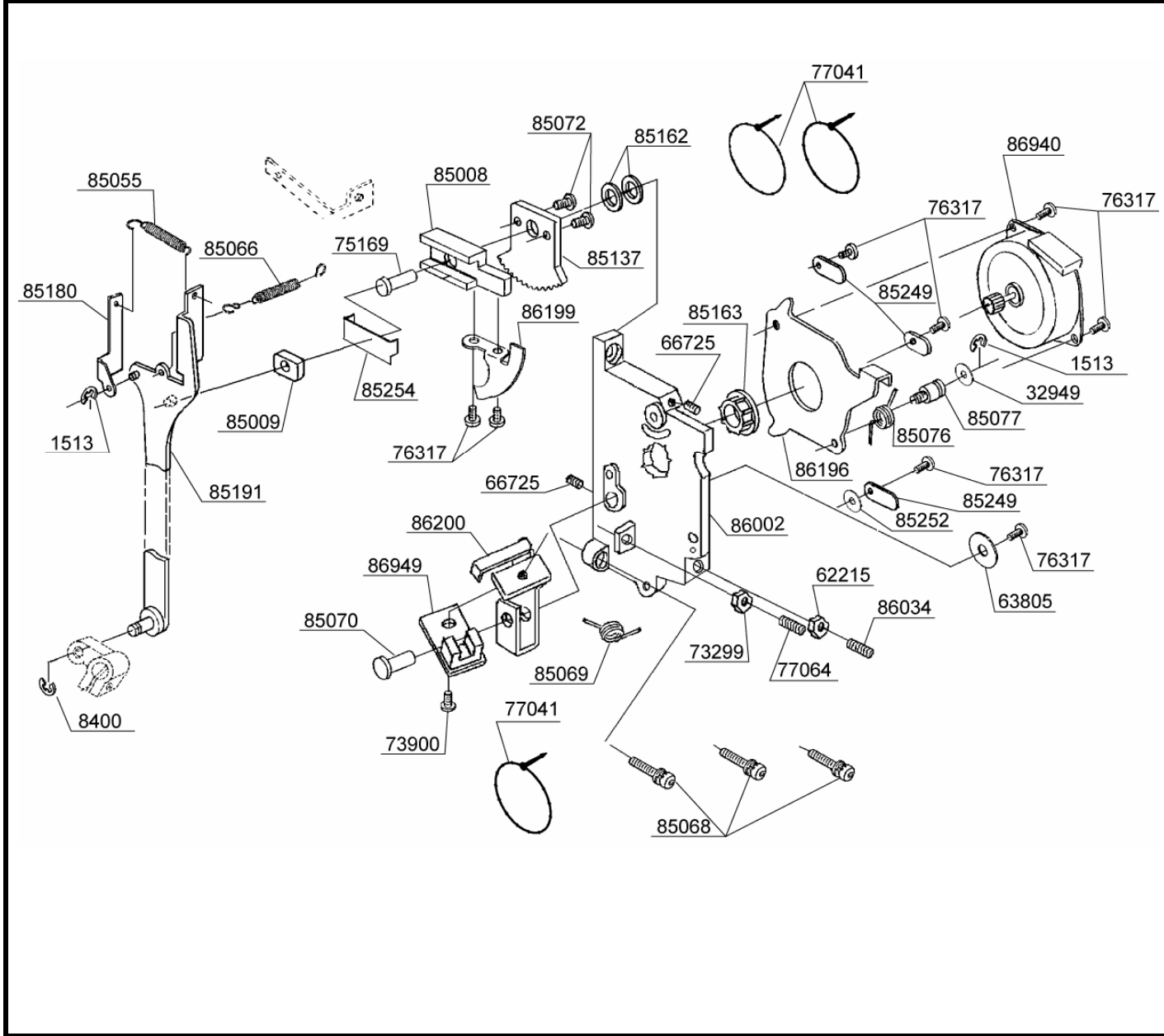
PART NO	DESCRIPTION
1504	E7 CLIP-ON-WASHER
43390	THRUST WASHER
43392	THRUST WASHER
51045	BOBBIN CASE SET
51058	RETAINER SET
60162	KNOCK PIN
61770	BALL BUSHING
66235	SECURING PLATE
66474	M5 SCREW
66725	M4 SCREW
67444	COLLAR
67447	M5 SCREW
73434	M4 PHILLIPS SCREW
76027	SHUTTLE RACE BASE
76134	SCREW
76136	BELT METAL
76137	SHUTTLE RACE SHAFT
76141	BALL BUSHING
76203	OILING CORD
76205	TORSION SPRING
76317	M3 PHILLIPS SCREW
85128	BOBBIN
85129	BEVEL GEAR
85239	SECURING PLATE
85251	WASHER
86080	SHUTTLE RACE
86132	BOBBIN CASE
86133	FEED LIFTING CAM
86136	BRUSH
86239	BOBBIN CASE STOPPER
86899	LOWER SHAFT

BUYER'S MODEL NO.	CE-100 , CE-200	SECTION	PAGE	REVISION	REMARKS	PART NO	DESCRIPTION
BUYER'S MODEL NAME	CE-100 : futura		8			32949	WASHER
FACTORY MODEL	CE-200 : Quantum futura						37515
ORIGINAL ISSUE	22060,22160,221S0					39817	M4 PHILLIPS SCREW
	MARCH, 2004	SERIAL NO.				43390	THRUST WASHER



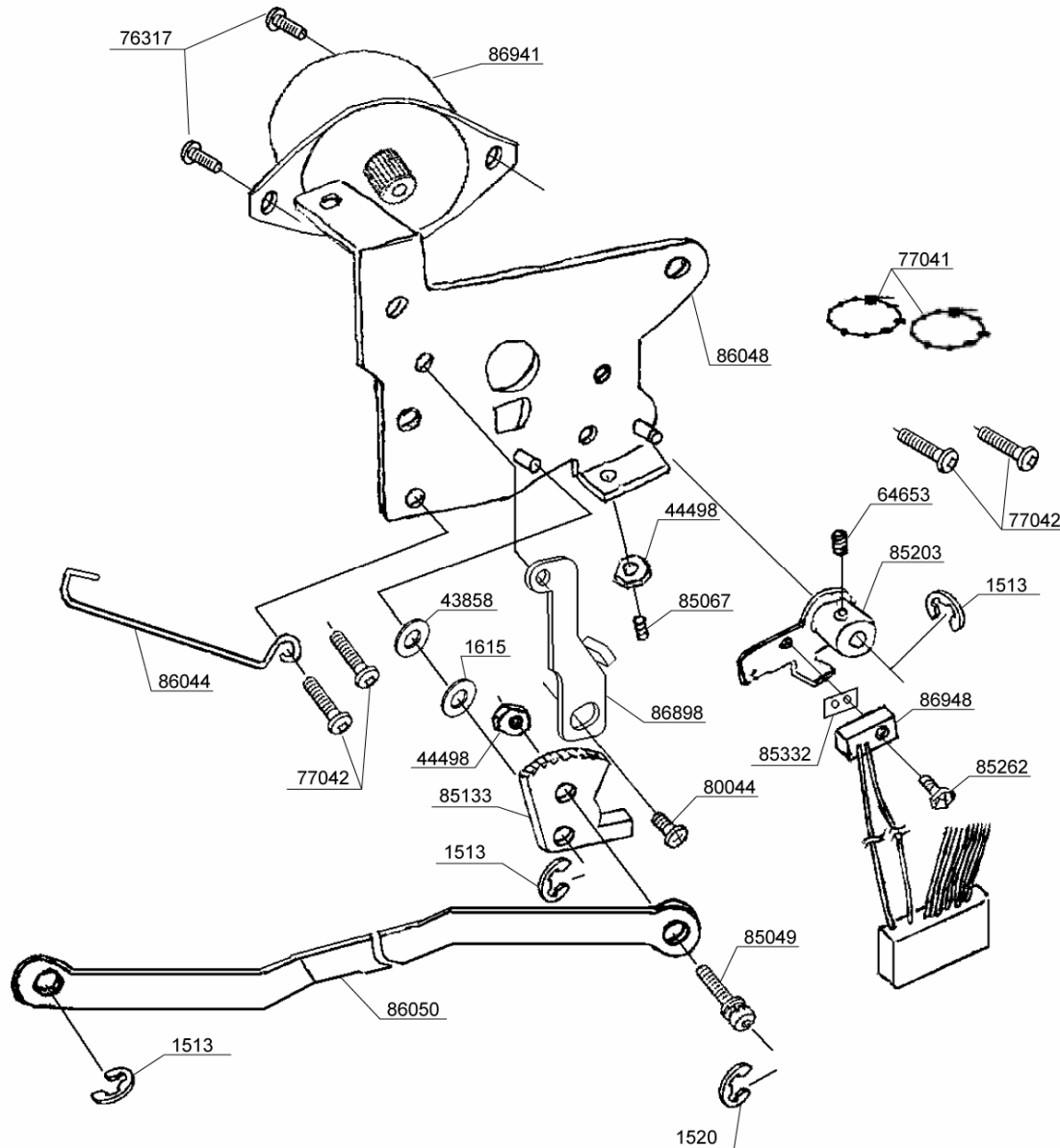
32949	WASHER
37515	WASHER
39817	M4 PHILLIPS SCREW
43390	THRUST WASHER
43858	WASHER
61381	CRINKLE WASHER
61770	BALL BUSHING
64653	M3 SCREW
66235	SECURING PLATE
66481	M4 STUD SCREW
66725	M4 SCREW
67444	COLLAR
72791	M4 SCREW
72826	EXTENSION SPRING
73299	M4 TORQUE NUT
73434	M4 PHILLIPS SCREW
76025	FEED DOG BASE
76104	FEED DOGS
76122	FEED BASE ADJUSTMENT
76125	SPRING HOOK PLATE
76141	BALL BUSHING
76324	M4 SCREW
77035	M4 PHILLIPS SCREW
77042	M4 PHILLIPS SCREW
85052	PIN W / HEAD
85192	FEED-DOG BASE BRACKET
85247	SECURING PLATE
86004	FEED REGULATING ARM
86032	HORIZONTAL FEED SHAFT

BUYER'S MODEL NO.	CE-100 , CE-200	SECTION	PAGE	REVISION	REMARKS	PART NO.	DESCRIPTION
BUYER'S MODEL NAME	CE-100 : futura		9			1513	E4 CLIP-ON-WASHER
FACTORY MODEL	CE-200 : Quantum futura					8400	E5 CLIP-ON-WASHER
ORIGINAL ISSUE	22060,22160,221S0					32949	WASHER
	MARCH, 2004	SERIAL NO.				62215	M4 NUT



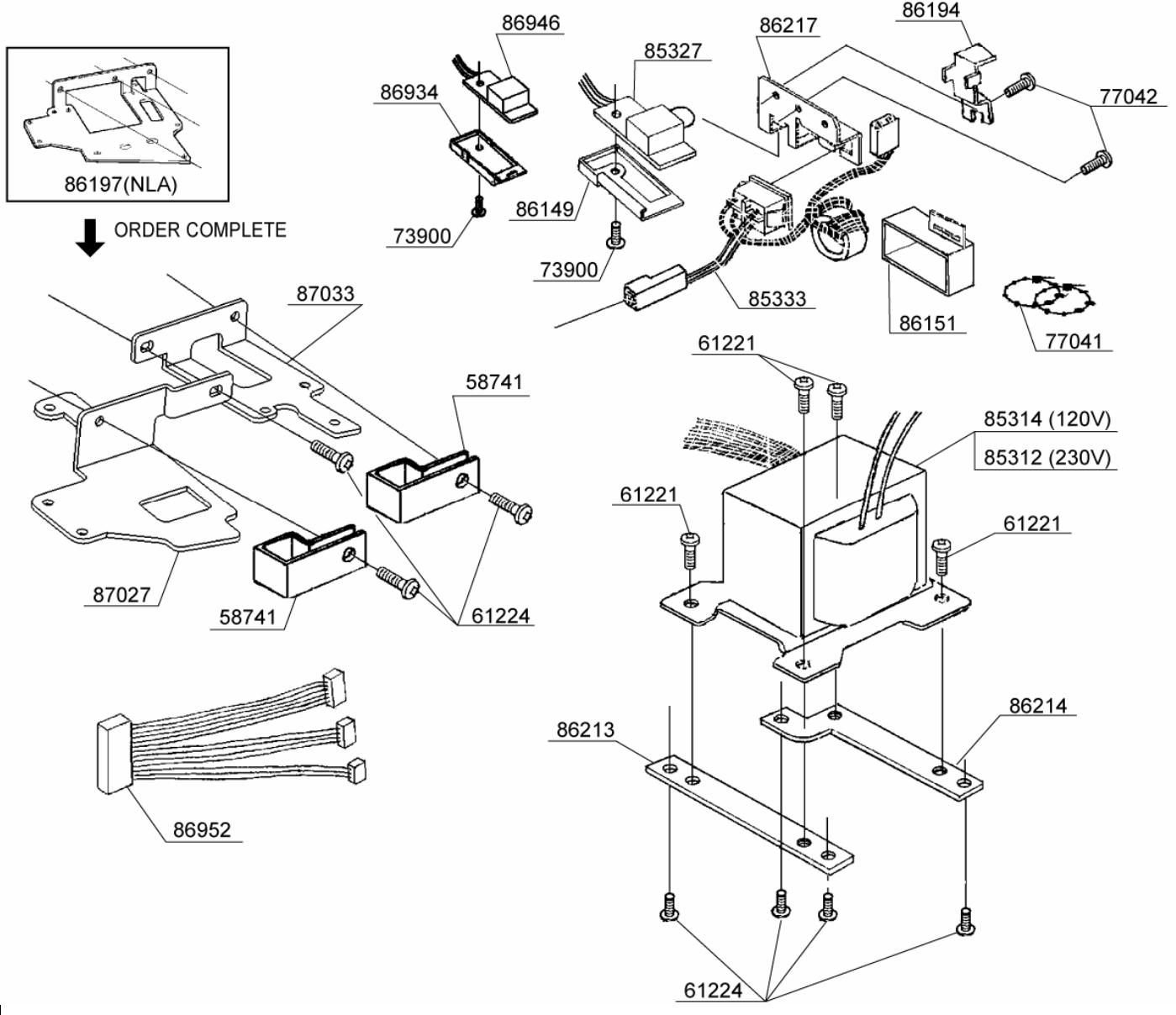
PART NO.	DESCRIPTION
1513	E4 CLIP-ON-WASHER
8400	E5 CLIP-ON-WASHER
32949	WASHER
62215	M4 NUT
63805	WASHER
66725	M4 SCREW
73299	M4 TORQUE NUT
73900	M3 SCREW
75169	HEADED PIN
76317	M3 PHILLIPS SCREW
77041	UNITY FASTENER
77064	M4 SCREW
85008	FEED CONTROL REGULATOR
85009	SLIDE BLOCK
85055	EXTENSION SPRING
85066	EXTENSION SPRING
85068	CAP-BOLT
85069	SPRING
85070	PIN W / HEAD
85072	M3 SCREW
85076	TORSION SPRING
85077	SCREW W / SHAFT
85137	FEED CONTROL GEAR
85162	WASHER
85163	RING
85180	PLATE
85191	FEED CONTROL ROD
85249	SECURING PLATE
85252	WASHER
85254	PLATE
86002	MOUNTING BRACKET
86034	M4 SCREW
86196	MOTOR BRACKET
86199	SENSOR PLATE
86200	FEED SENSOR BRACKET
86940	STEP MOTOR
86949	PLATE

BUYER'S MODEL NO.	CE-100 , CE-200	SECTION	PAGE	REVISION	REMARKS	PART NO.	DESCRIPTION
BUYER'S MODEL NAME	CE-100 : futura		10	JUNE, 2004		1513	E4 CLIP-ON-WASHER
	CE-200 : Quantum futura					1520	E3 CLIP-ON-WASHER
FACTORY MODEL	22060,22160,221S0						
ORIGINAL ISSUE	MARCH, 2004	SERIAL NO.				43858	WASHER



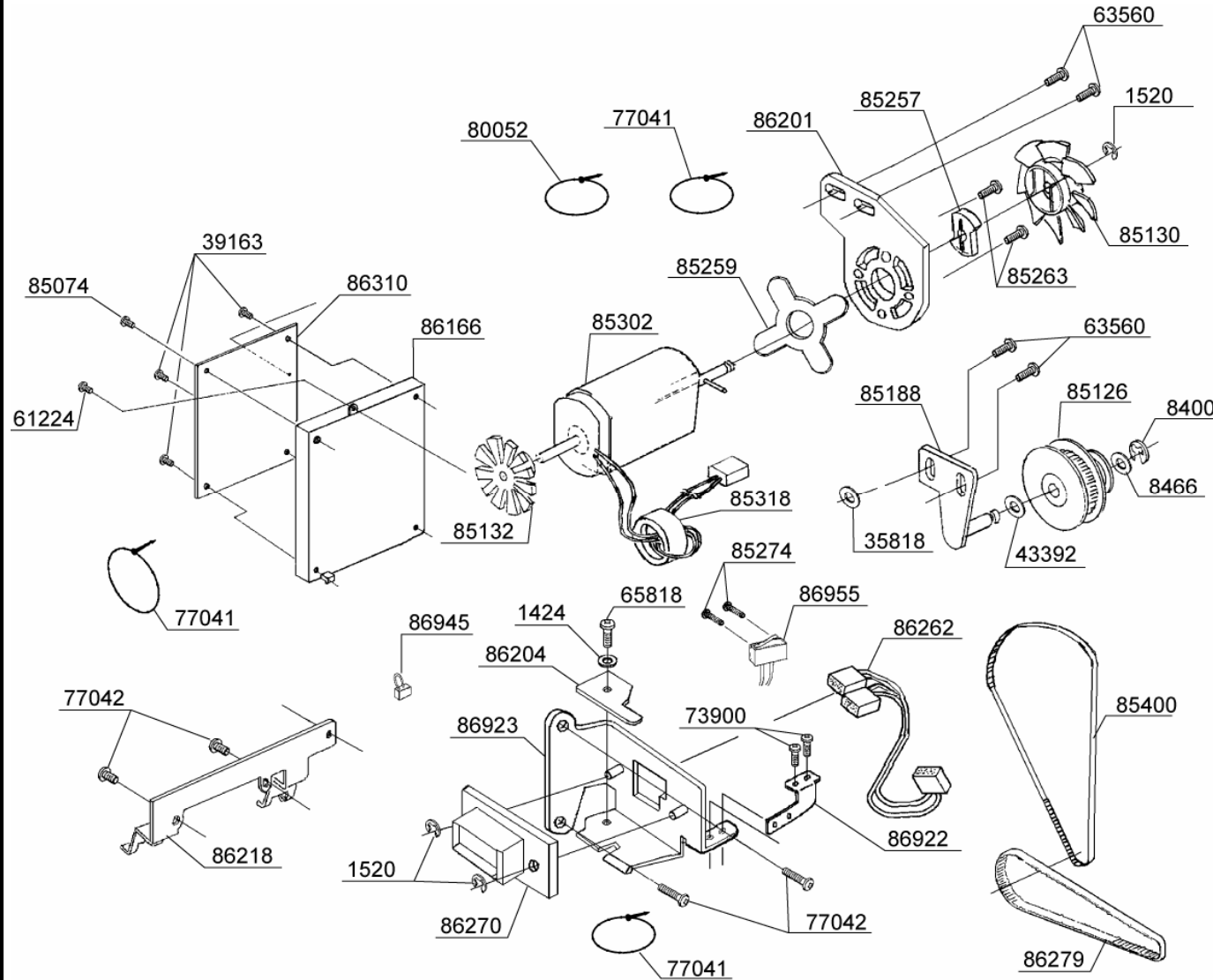
1513	E4 CLIP-ON-WASHER
1520	E3 CLIP-ON-WASHER
1615	WASHER
43858	WASHER
44498	M3 NUT
61225	M4 PHILLIPS SCREW
64653	M3 SCREW
76317	M3 PHILLIPS SCREW
77041	UNITY FASTENER
77042	M4 PHILLIPS SCREW
80044	M4 SCREW
85049	STUD SCREW
85067	M3 SCREW
85133	ZIGZAG DRIVE GEAR
85203	SENSOR SUPPORT LEVER
85262	M2 SCREW
85332	SPACER
86044	WIRE SPRING
86898	ZZ LIMITING PLATE
86920	ZIGZAG CONNECTING ROD
86924	SPACER
86940	STEP MOTOR
86948	SENSOR UNIT
87015	MOTOR BRACKET

BUYER'S MODEL NO.	CE-100 , CE-200	SECTION	PAGE	REVISION	REMARKS	PART NO	DESCRIPTION
BUYER'S MODEL NAME	CE-100 : futura		11	February, 2007		58741	CORD GUARD
	CE-200 : Quantum futura						61221
FACTORY MODEL	22060,22160,221S0					61224	M4 PHILLIPS SCREW
ORIGINAL ISSUE	MARCH, 2004	SERIAL NO.				73900	M3 SCREW



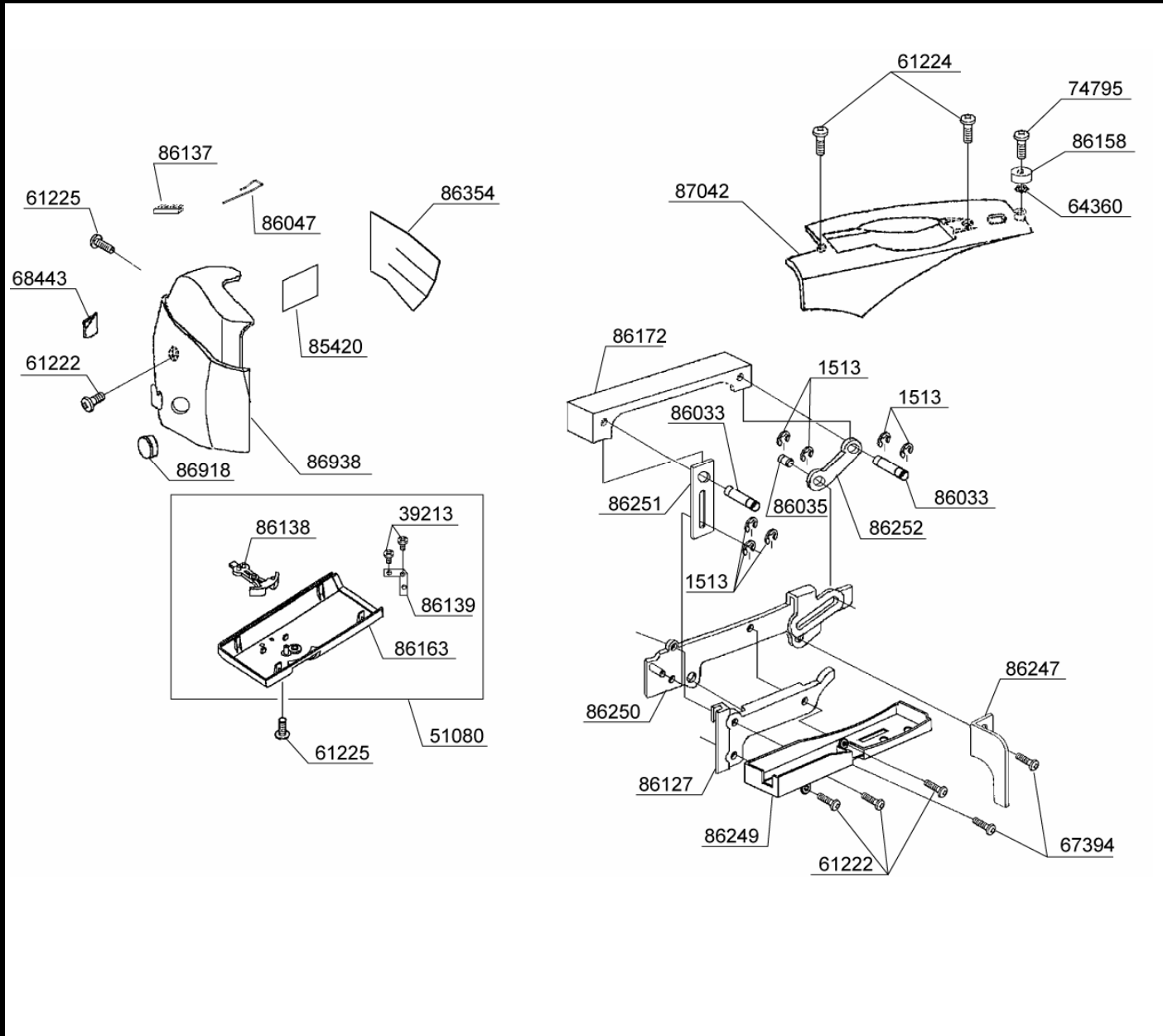
PART NO	DESCRIPTION
58741	CORD GUARD
61221	M4 PHILLIPS SCREW
61224	M4 PHILLIPS SCREW
73900	M3 SCREW
77041	UNITY FASTENER
77042	M4 PHILLIPS SCREW
85312	TRANSFORMER (230V)
85314	TRANSFORMER (120V)
85327	F.C.JACK HARNESS
85333	SWITCH HARNESS
86149	JACK COVER
86151	SWITCH COVER
86194	SECURING PLATE
86197	CORD BRACKET(NLA)→ ORDER COMPLETE 87033+87027
86213	BRACKET A
86214	BRACKET B
86217	SWITCH BRACKET
86934	USB INSULATION COVER
86946	USB HARNESS
86952	CONNECTING HARNESS
87027	CORD BRACKET A
87033	CORD BRACKET B

BUYER'S MODEL NO.	CE-100 , CE-200	SECTION	PAGE	REVISION	REMARKS	PART NO	DESCRIPTION
BUYER'S MODEL NAME	CE-100 : futura		12	JUNE, 2004		1424	WASHER
	CE-200 : Quantum futura						1520
FACTORY MODEL	22060,22160,221S0					8400	E5 CLIP-ON-WASHER
ORIGINAL ISSUE	MARCH, 2004		SERIAL NO.			8466	WASHER



35818	WASHER
37515	WASHER
39163	TAPPING SCREW
43392	THRUST WASHER
61224	M4 PHILLIPS SCREW
63560	M4 PHILLIPS SCREW
65818	M4 BOLT
73900	M3 SCREW
77041	UNITY FASTENER
77042	M4 PHILLIPS SCREW
80052	UNITY FASTENER
85074	M3 SCREW
85126	IDLER PULLEY
85130	MOTOR PULLEY
85132	ENCODER
85188	IDLER PULLEY BRACKET
85257	RUBBER STOPPER
85259	RUBBER CUSHION
85263	M3 SCREW
85274	M2 SCREW
85302	MOTOR
85318	FERRITE RING
85400	BELT (L)
86166	C.B. CONTAINER
86201	MOTOR BRACKET
86204	STOPPER
86218	BOARD BRACKET
86262	HARNESS (A)
86270	CONNECTOR
86279	BELT (S)
86310	MAIN CIRCUIT BOARD
86922	SWITCH BRACKET
86923	CONNECTOR BRACKET
86945	JUMPER HARNESS
86955	SWITCH HARNESS

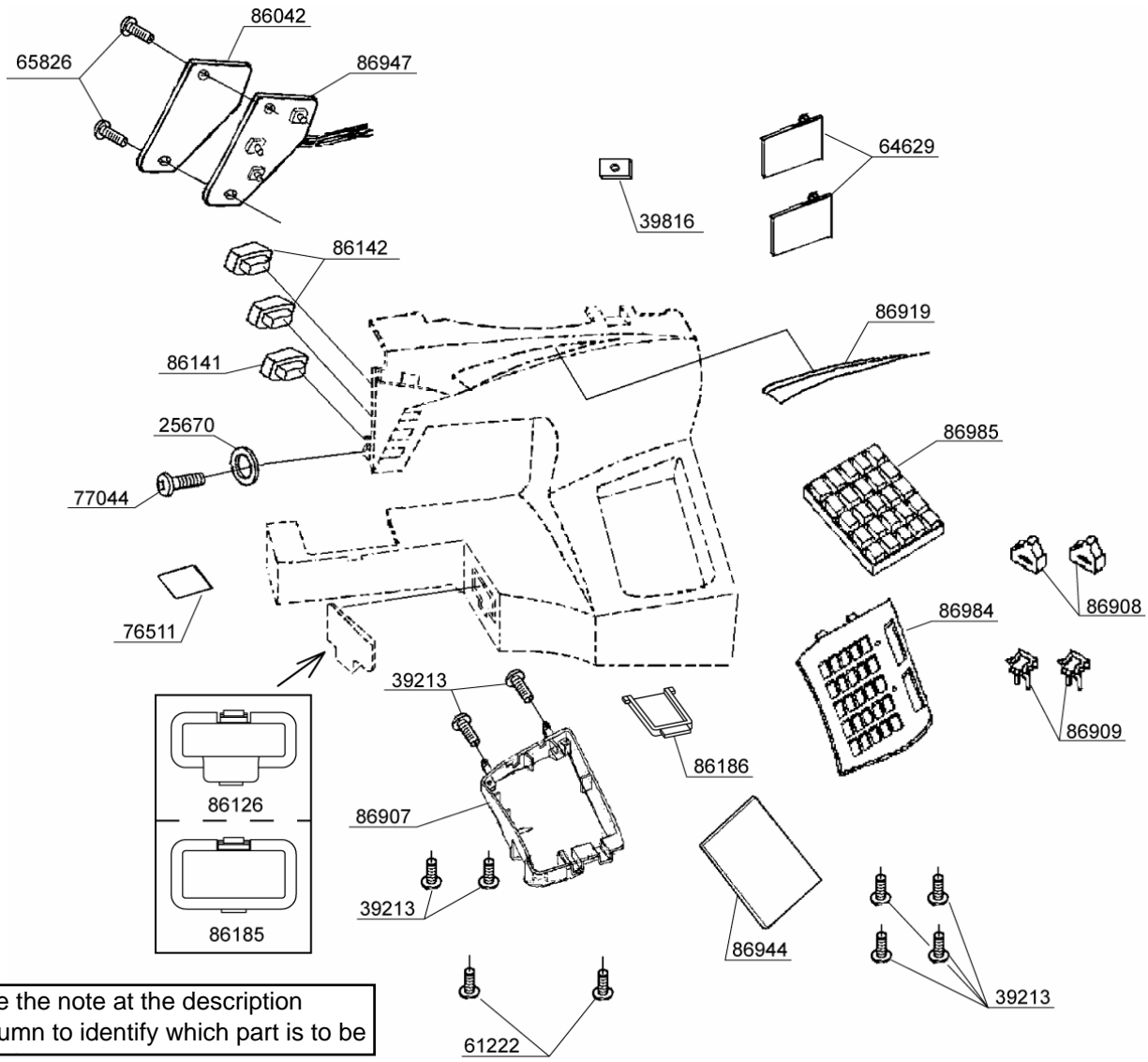
BUYER'S MODEL NO.	CE-100 , CE-200	SECTION	PAGE	REVISION	REMARKS	PART NO.	DESCRIPTION
BUYER'S MODEL NAME	CE-100 : futura		13	February, 2007		1513	E4 CLIP-ON-WASHER
	CE-200 : Quantum futura					39213	M3 SCREW
FACTORY MODEL	22060,22160,221S0					51080	BOTTOM COVER SET
ORIGINAL ISSUE	MARCH, 2004	SERIAL NO.				61222	M4 PHILLIPS SCREW



PART NO.	DESCRIPTION
1513	E4 CLIP-ON-WASHER
39213	M3 SCREW
51080	BOTTOM COVER SET
61222	M4 PHILLIPS SCREW
61224	M4 PHILLIPS SCREW
61225	M4 PHILLIPS SCREW
64360	TOOTHED WASHER
67394	M5 PHILLIPS SCREW
68443	BLADE
74795	TAPPING SCREW
85420	SEAL
86033	SHAFT
86035	SHAFT
86047	CLIP
86127	HANDLE GUIDE
86137	BRUSH
86138	DROP KNOB
86139	DROP KNOB PLATE
86158	BOBBIN WINDER LATCH
86163	BOTTOM COVER
86172	HANDLE
86247	LIMITING PLATE
86249	HANDLE BASE COVER
86250	HANDLE BRACKET
86251	SLIDE LINK (LEFT)
86252	SLIDE LINK (RIGHT)
86354	REFLECTING SHEET
86918	CAP
86938	FACE COVER
86982	ROOF COVER

BUYER'S MODEL NO.	CE-100	SECTION	PAGE	REVISION	REMARKS	PART NO.	DESCRIPTION
BUYER'S MODEL NAME	CE-100 : futura		14-1	JUNE, 2004		25670	WASHER
FACTORY MODEL	22060,22160,221S0			February, 2007		39213	M3 SCREW
ORIGINAL ISSUE	MARCH, 2004		SERIAL NO.			39816	M4 SQUARE NUT
						61222	M4 PHILLIPS SCREW

CE-100



65826	M3 SCREW
76511	SEAL
77044	M3 PHILLIPS SCREW
86042	INSULATION SHEET
86126	CONNECTOR CAP
86141	BUTTON (A)
86142	BUTTON (B)
86907	CIRCUIT BOARD HOLDER
86908	SPEED CONTROL KNOB
86909	SPEED CONTROL HOLDER
86919	PANEL
86944	CIRCUIT BOARD
86947	SS SWITCH HARNESS
86984	CONTROL PANEL
86985	PATTERN SWITCH
86185	CONNECTOR CAP
86186	LED COVER

*** NOTE:**

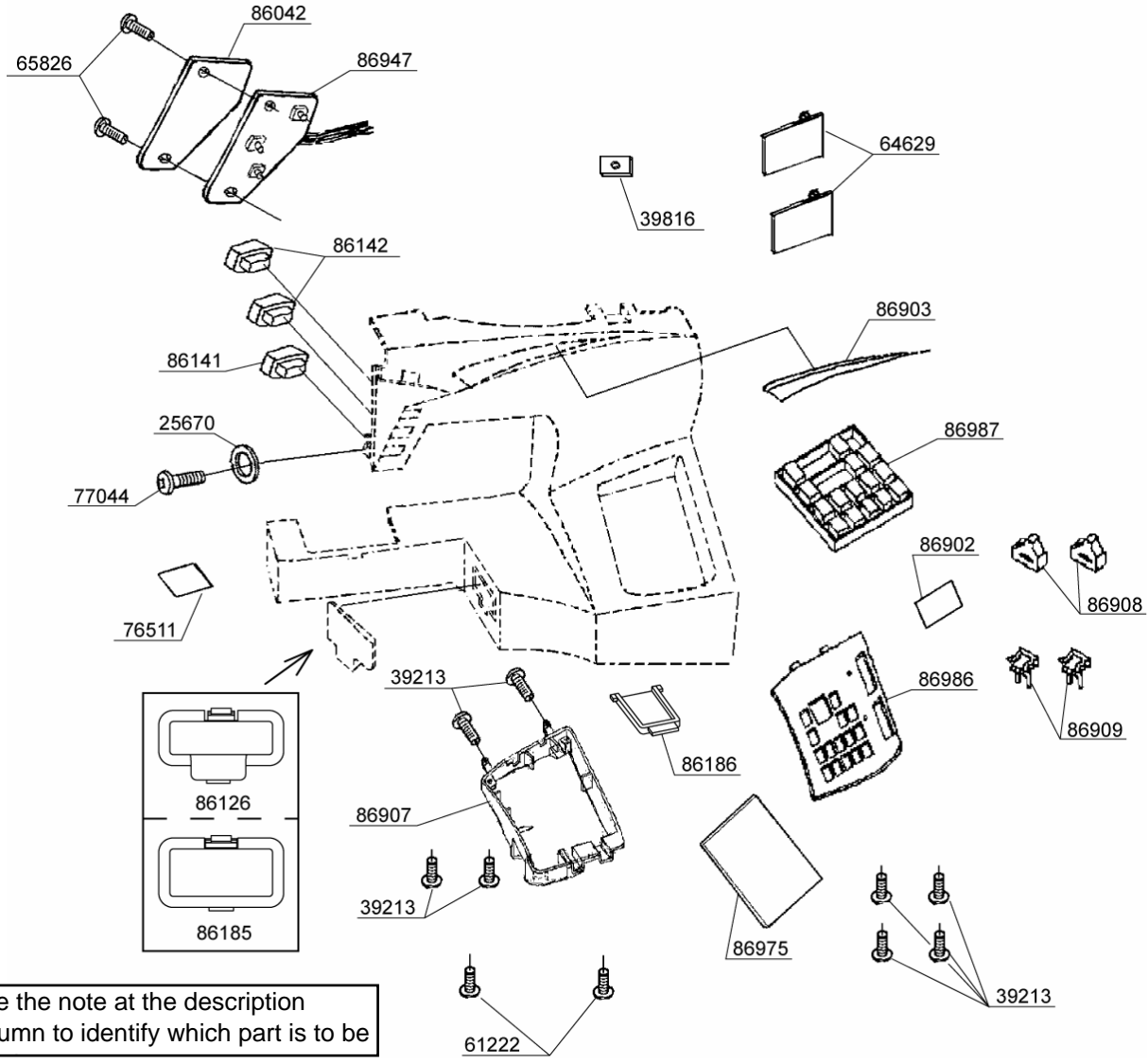
1. Check the shape of connector hole of front cover.
2. Use the following parts for the modified front cover:
 *Connector cover #86185
 *LED cover #86186

Use the following part for the current front cover:
 *Connector cover #86126
 *LED cover is unavailable

See the note at the description column to identify which part is to be

BUYER'S MODEL NO.	CE-200	SECTION	PAGE	REVISION	REMARKS	PART NO.	DESCRIPTION
BUYER'S MODEL NAME	CE-200 : Quantum futura		14-2	JUNE, 2004		25670	WASHER
FACTORY MODEL	22060,22160,221S0			February, 2007		39213	M3 SCREW
ORIGINAL ISSUE	MARCH, 2004					39816	M4 SQUARE NUT
		SERIAL NO.				61222	M4 PHILLIPS SCREW

CE-200



65826	M3 SCREW
39213	M3 SCREW
39816	M4 SQUARE NUT
61222	M4 PHILLIPS SCREW
64629	CORD GUIDE
65826	M3 SCREW
76511	SEAL
77044	M3 PHILLIPS SCREW
86042	INSULATION SHEET
86126	CONNECTOR CAP
86141	BUTTON (A)
86142	BUTTON (B)
86902	INDICATOR WINDOW
86903	PANEL
86907	CIRCUIT BOARD HOLDER
86908	SPEED CONTROL KNOB
86909	SPEED CONTROL HOLDER
86947	SWITCH HARNESS
86975	CIRCUIT BOARD
86986	CONTROL PANEL
86987	PATTERN SWITCH
86185	CONNECTOR CAP
86186	LED COVER

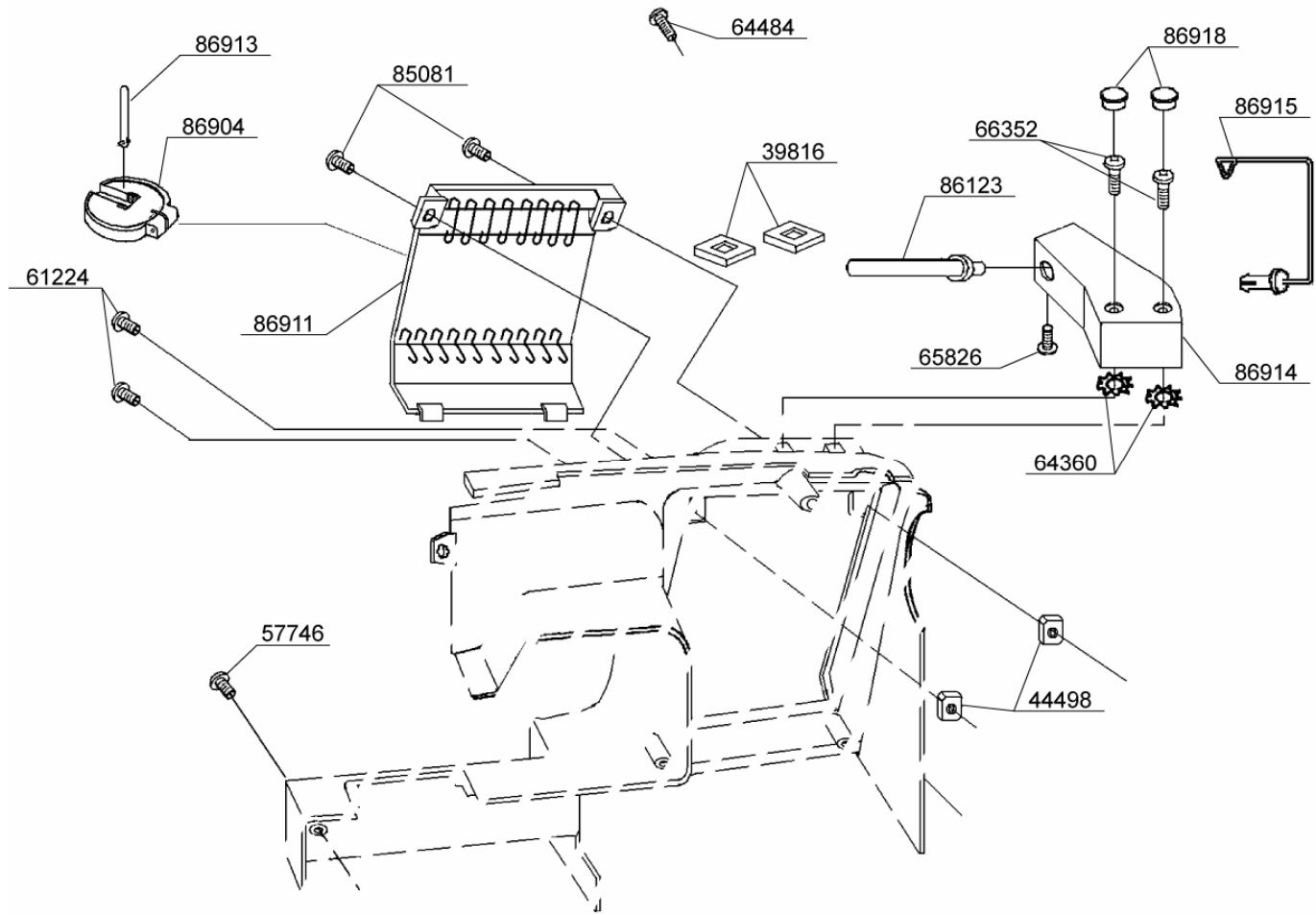
*** NOTE:**

1. Check the shape of connector hole of front cover.
2. Use the following parts for the modified front cover:
 *Connector cover #86185
 *LED cover #86186

Use the following part for the current front cover:
 *Connector cover #86126
 *LED cover is unavailable

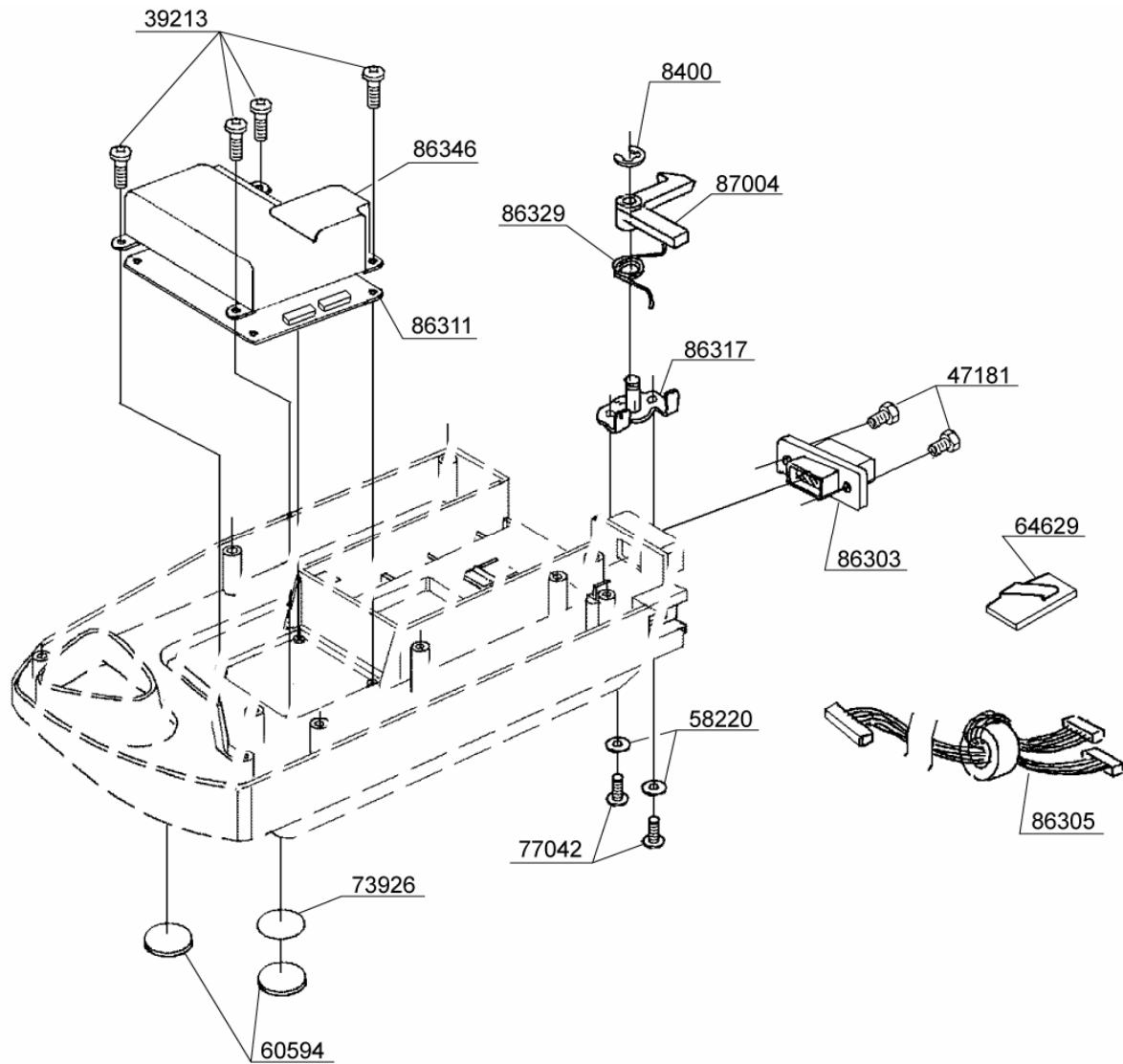
See the note at the description column to identify which part is to be

BUYER'S MODEL NO.	CE-100 , CE-200	SECTION	PAGE	REVISION	REMARKS	PART NO.	DESCRIPTION
BUYER'S MODEL NAME	CE-100 : futura		15	February, 2007		39816	M4 SQUARE NUT
	CE-200 : Quantum futura						44498
FACTORY MODEL	22060,22160,221S0					57746	TAPPING SCREW
ORIGINAL ISSUE	MARCH, 2004	SERIAL NO.				61224	M4 PHILLIPS SCREW



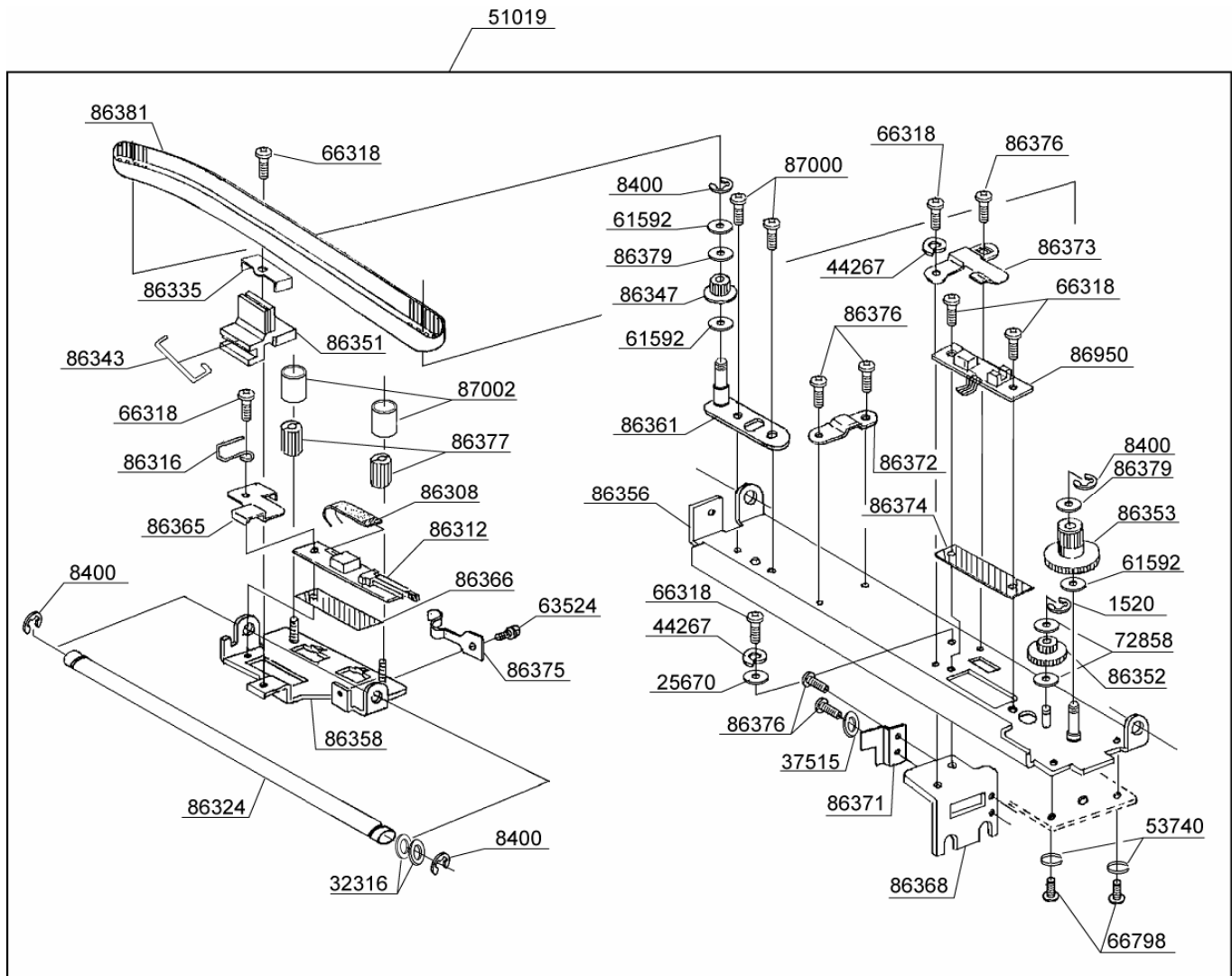
PART NO.	DESCRIPTION
39816	M4 SQUARE NUT
44498	M3 SQUARE NUT
57746	TAPPING SCREW
61224	M4 PHILLIPS SCREW
64360	TOOTHED WASHER
64484	TAPPING SCREW
65826	M3 SCREW
66352	M4 PHILLIPS SCREW
85081	SCREW
86123	SPOOL PIN (A)
86911	BACK COVER
86904	SPOOL PIN HOLDER (B)
86913	SPOOL PIN (B)
86914	SPOOL PIN HOLDER (A)
86915	THREAD GUIDE POLE
86918	CAP

BUYER'S MODEL NO.	CE-100 , CE-200	SECTION	PAGE	REVISION	REMARKS	PART NO.	DESCRIPTION
BUYER'S MODEL NAME	CE-100 : futura		16			8400	E5 CLIP-ON-WASHER
	CE-200 : Quantum futura					39213	M3 SCREW
FACTORY MODEL	22060,22160,221S0					47181	TAPPING SCREW
ORIGINAL ISSUE	MARCH, 2004					SERIAL NO.	



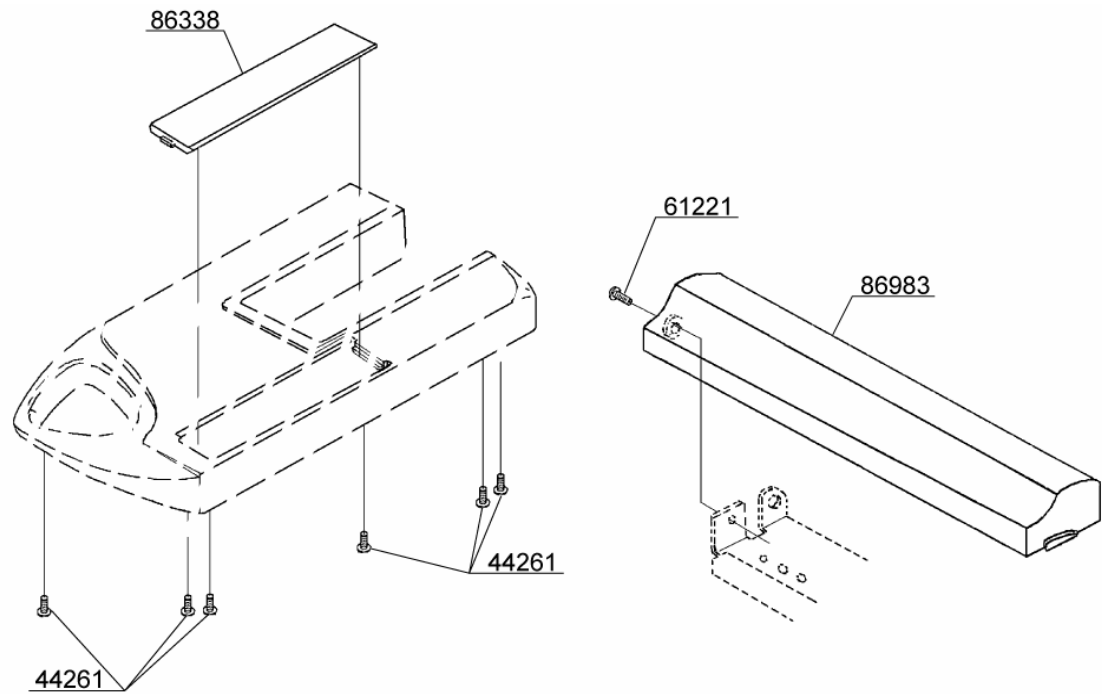
PART NO.	DESCRIPTION
8400	E5 CLIP-ON-WASHER
39213	M3 SCREW
47181	TAPPING SCREW
58220	WASHER
60594	RUBBER FOOT
64629	CORD GUIDE
73926	SPACER
77042	M4 PHILLIPS SCREW
86303	CONNECTOR
86305	HARNESS
86311	CIRCUIT BOARD
86317	SUPPORTING PLATE
86329	TORSION SPRING
86346	BOARD COVER
87004	RELEASE LEVER

BUYER'S MODEL NO.	CE-100 , CE-200	SECTION	PAGE	REVISION	REMARKS	PART NO.	DESCRIPTION
BUYER'S MODEL NAME	CE-100 : futura		18	JUNE, 2004		1520	E3 CLIP-ON-WASHER
FACTORY MODEL	CE-200 : Quantum futura						8400
ORIGINAL ISSUE	22060,22160,221S0					25670	WASHER
	MARCH, 2004	SERIAL NO.				32316	WASHER

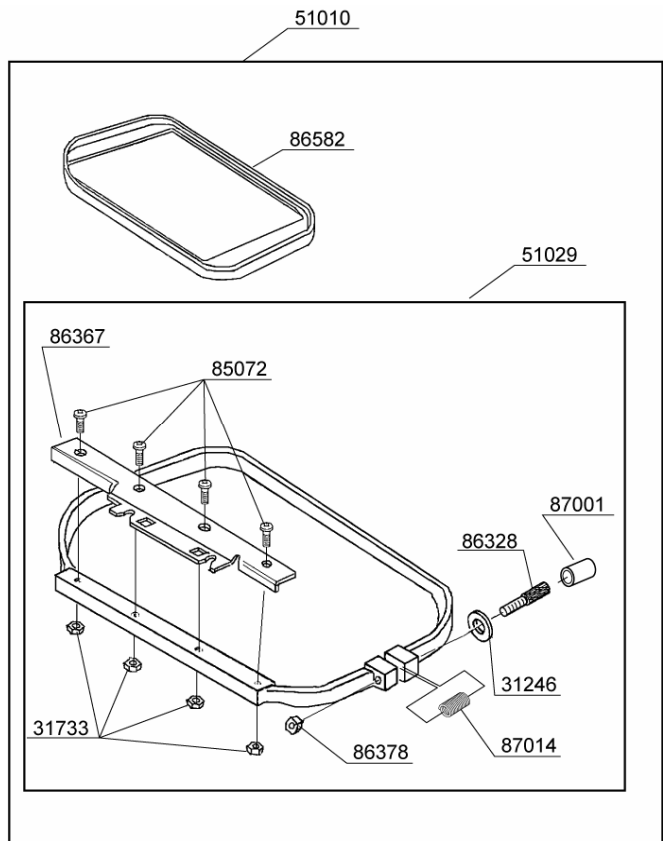
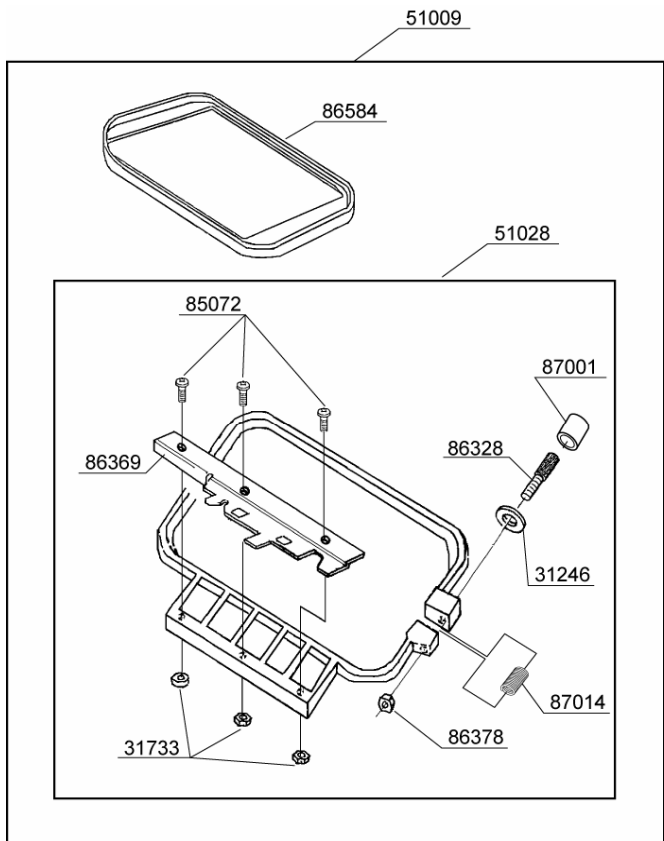


1520	E3 CLIP-ON-WASHER
8400	E5 CLIP-ON-WASHER
25670	WASHER
32316	WASHER
37515	WASHER
44267	SPRING WASHER
51019	Y-UNIT ASSY
53740	SPRING WASHER
61592	WASHER
63524	M3 BOLT
66318	M3 SCREW
66798	M4 SCREW
72858	WASHER
86308	FLAT CABLE
86312	HOOP SWITCH UNIT
86316	CABLE GUIDE
86324	SHAFT
86335	PROTECTION PLATE (Y)
86343	WIRE SPRING
86347	T PULLEY
86351	BELT HOLDER (Y)
86352	GEAR (Y)
86353	T PULLEY & GEAR (Y)
86356	Y BASE
86358	Y MOVING PLATE
86361	T PULLEY BASE (Y)
86365	Y SENSOR PLATE
86366	INSULATION SHEET
86368	Y BASE SUPPORT PLATE
86371	CORD GUIDE (B)
86372	CORD GUIDE (C)
86373	CORD GUIDE (D)
86374	INSULATION SHEET
86375	HOOP SWITCH
86376	M3 SCREW
86377	HOOP SECURING SCREW
86379	WASHER
86381	TIMING BELT (Y)
86950	HARNESS
87000	M4 SCREW
87002	VINYL TUBE

BUYER'S MODEL NO.	CE-100 , CE-200	SECTION	PAGE	REVISION	REMARKS	PART NO.	DESCRIPTION	
BUYER'S MODEL NAME	CE-100 : futura		19	JUNE, 2004		44261	M4 SCREW	
	CE-200 : Quantum futura					61221	M4 PHILLIPS SCREW	
FACTORY MODEL	22060,22160,221S0						86338	COVER
ORIGINAL ISSUE	MARCH, 2004			SERIAL NO.			86983	CARRIAGE

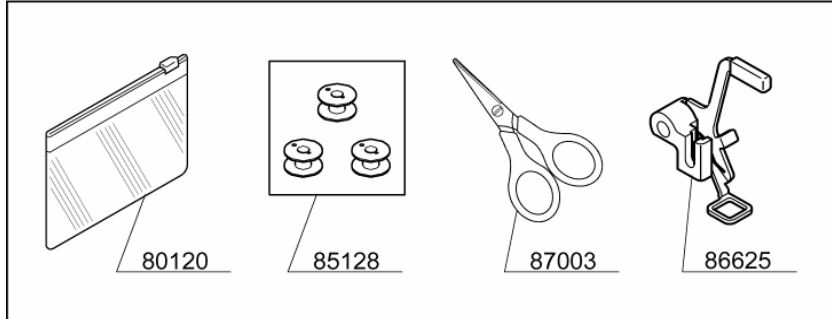
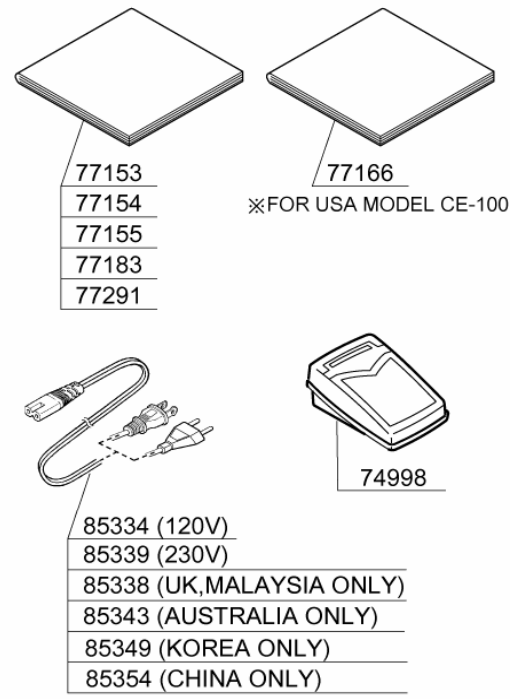
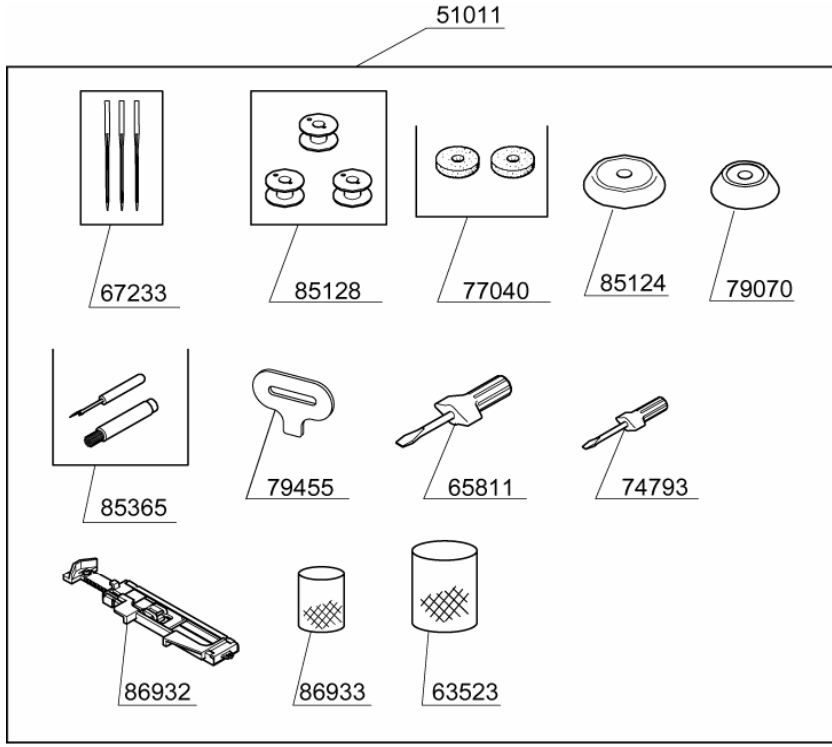


BUYER'S MODEL NO.	CE-100 , CE-200	SECTION	PAGE	REVISION	REMARKS	PART NO.	DESCRIPTION
BUYER'S MODEL NAME	CE-100 : futura		20	JUNE, 2004		31246	WASHER
	CE-200 : Quantum futura			FEBRUARY, 2005		31733	M3 NUT
FACTORY MODEL	22060,22160,221S0						
ORIGINAL ISSUE	MARCH, 2004	SERIAL NO.				51010	LARGE HOOP



31246	WASHER
31733	M3 NUT
51009	SMALL HOOP
51010	LARGE HOOP
51028	OUTER FRAME (S) SET
51029	OUTER FRAME (L) SET
85072	M3 SCREW
86328	HOOP ADJUSTING SCREW
86367	HOOP MOUNTING PLATE
86369	HOOP MOUNTING PLATE
86378	M3 NUT
86582	INNER FRAME (L)
86584	INNER FRAME (S)
87001	VINYL TUBE
87014	SPRING

BUYER'S MODEL NO.	CE-100, CE-200	SECTION	PAGE	REVISION	REMARKS	PART NO.	DESCRIPTION
BUYER'S MODEL NAME	CE-100 : futura		21	JUNE, 2004		51011	ACCESSORY SET
	CE-200 : Quantum futura			SEPTEMBER, 2004		51012	ACCESSORY SET
FACTORY MODEL	22060,22160,221S0			February, 2007		63523	THREAD SPOOL NET (LONG)
ORIGINAL ISSUE	MARCH, 2004	SERIAL NO.				65811	LARGE SCREW DRIVER



51011	ACCESSORY SET
51012	ACCESSORY SET
63523	THREAD SPOOL NET (LONG)
65811	LARGE SCREW DRIVER
67233	NEEDLE
74793	SMALL SCREW DRIVER
74998	FOOT CONTROL
77040	SPOOL PIN DISC
77153	INSTRUCTION BOOK (E/F/S)(CE-100)
77154	INSTRUCTION BOOK (E/F/S)(CE-200)
77155	INSTRUCTION BOOK (I/D/G)(CE-200)
77166	INSTRUCTION BOOK (E/F/S)(FOR USA CE-100)
77183	INSTRUCTION BOOK (ENG/DAN/SWE)(CE-200)
77291	INSTRUCTION BOOK (KOREA)(CE-200)
79070	SPOOL PIN CAP
79455	LARGE SCREW DRIVER
80120	ACCESSORY VINYL BAG
82049	INSTRUCTION SHEET
83099	REMOVABLE THREAD GUIDE
85124	SPOOL PIN CAP
85128	BOBBIN
85334	POWER CORD (120V)
85338	POWER CORD (UK,MALAYSIA ONLY)
85339	POWER CORD (230V)
85343	POWER CORD (AUSTRALIA ONLY)
85349	POWER CORD (KOREA ONLY)
85354	POWER CORD (CHINA ONLY)
85365	BUTTONHOLE OPENER / BRUSH
86625	EMBROIDERY PRESSER FOOT
86932	BUTTONHOLE FOOT
86933	THREAD SPOOL NET (SHORT)
86962	USB CABLE
87003	SCISSORS