

REVISED COPY
ADDED MODELS 5050 & 5062 DEC/02

LIST OF PARTS
SEWING MACHINE SERIES

9800/5017/5028

5040/5050

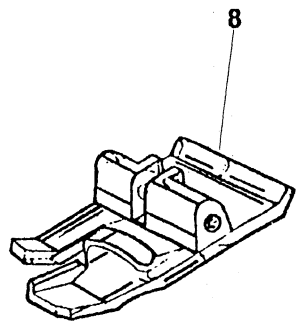
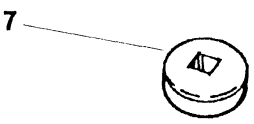
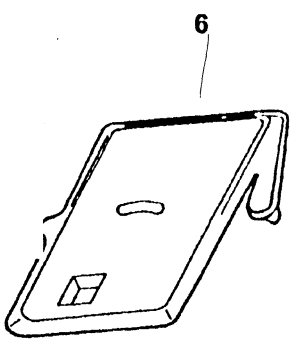
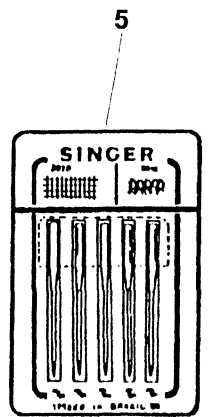
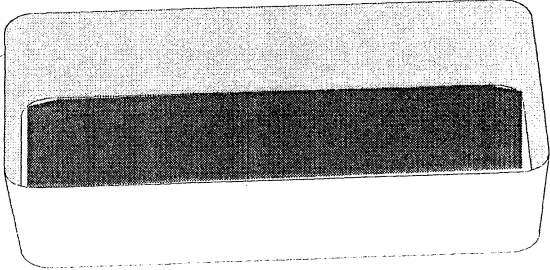
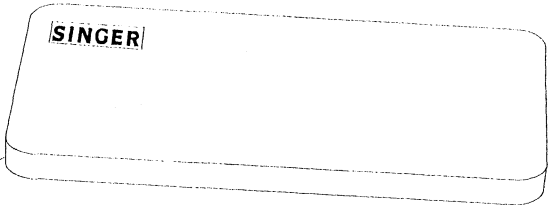
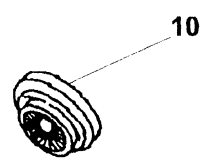
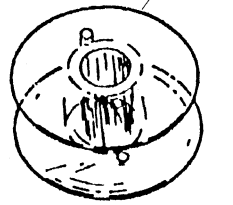
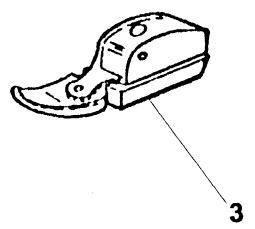
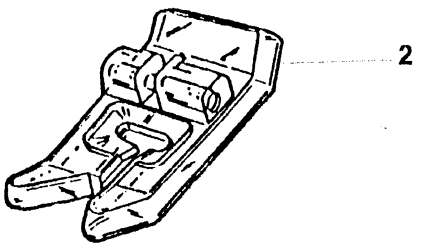
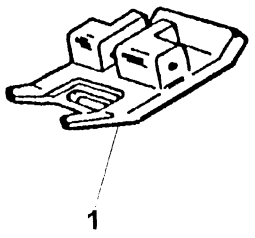
CP-17/5062

THE SINGER COMPANY
© 1998 SINGER DO BRASIL
ALL RIGHTS RESERVED

PRINTED IN BRAZIL
P/N 357669-001
DEC/02

ATTACHMENT SET

9



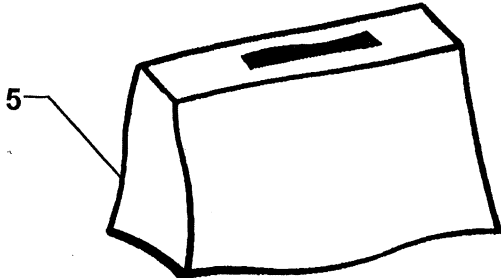
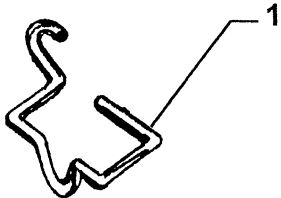
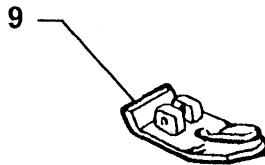
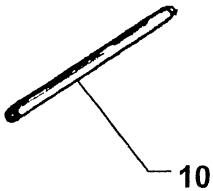
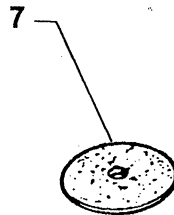
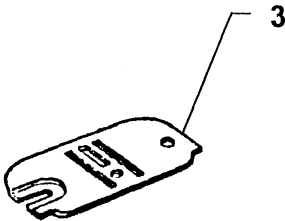
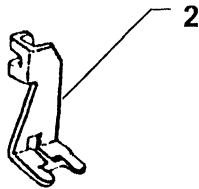
REV: _____
DATE: DEC/02

PARTS LIST

ATTACHMENT SET

REF. P/N.	DESCRIPTION	9	9	9	5	C	9	9	9	9	9	9	5	9	9	9	5	9	9	9	5	5	
		8	8	8	0	P	8	8	8	8	8	0	8	8	8	0	8	8	9	0	0		
		0	0	0	1	1	0	0	1	1	1	1	2	1	2	2	4	3	3	3	5	6	
		2	3	5	7	7	6	8	0	2	4	6	8	8	4	8	0	2	6	6	0	2	
1	446492-451 SPECIAL PURPOSE PRESSER FOOT PLATE (SNAP-ON)	-	-	X	X	X	X	X	X	X	X	X	X	X	X	X	X	X	X	X	X	X	
2	161927 PRESSER FOOT PLATE (SNAP-ON) FOR SEWING BUTTONHOLES	-	-	X	X	X	X	X	X	X	X	X	X	X	X	X	X	X	X	X	X	X	
3	507836 PRESSER FOOT PLATE (SNAP-ON) COMPLETE FOR CORDING & SLIDE FASTERNERS	-	-	X	X	X	X	X	X	X	X	X	X	X	X	X	X	X	X	X	X	X	
4	172336 BOBBIN (PLASTIC)	X	X	X	X	X	X	X	X	X	X	X	X	X	X	X	X	X	X	X	X	X	
5	353364 NEEDLE PACK (INCLUDES 1 EA. N2020 SIZE 11/14/15 & N2045 SIZE 11/14)	X	X	X	X	X	X	X	X	X	X	X	X	X	X	X	X	X	X	X	X	X	
6	313117 FEED COVER PLATE (PLASTIC)	X	X	X	X	X	X	X	X	X	X	X	X	X	X	X	X	X	X	X	X	X	
7	507664-467 ARM TOP COVER SPOOL PIN THREAD LEAD-OFF (SMALL PLASTIC)	X	X	X	X	X	X	X	X	X	X	X	X	X	X	X	X	X	X	X	X	X	
8	356630 BLIND STITCH GUIDE	-	-	X	X	X	X	X	X	X	X	X	X	X	X	X	X	X	X	X	X	X	
9	357031 ATTACHMENT SET COMPLETE	X	X	-	-	-	-	-	-	-	-	-	-	-	-	-	-	-	-	-	-	-	
9	357030 ATTACHMENT SET COMPLETE	-	-	X	X	X	X	X	X	X	X	X	X	X	X	X	X	X	X	-	-	-	
9	446496-003 ATTACHMENT BOX COMPLETE	-	-	-	-	-	-	-	-	-	-	-	-	-	-	-	-	-	-	-	X	X	X
10	179967-461 ARM TOP COVER SPOOL PIN THREAD LEAD-OFF	X	X	X	X	X	X	X	X	X	X	X	X	X	X	X	X	X	X	X	X	X	
11	446149-458 ATTACHMENT BOX COVER (PLASTIC)	-	-	-	-	-	-	-	-	-	-	-	-	-	-	-	-	-	-	-	X	X	X
12	446148-456 ATTACHMENT BOX BASE (PLASTIC)	-	-	-	-	-	-	-	-	-	-	-	-	-	-	-	-	-	-	-	X	X	X

ADDITIONAL ACCESSORIES (OVER-THE-COUNTER)



REV: _____

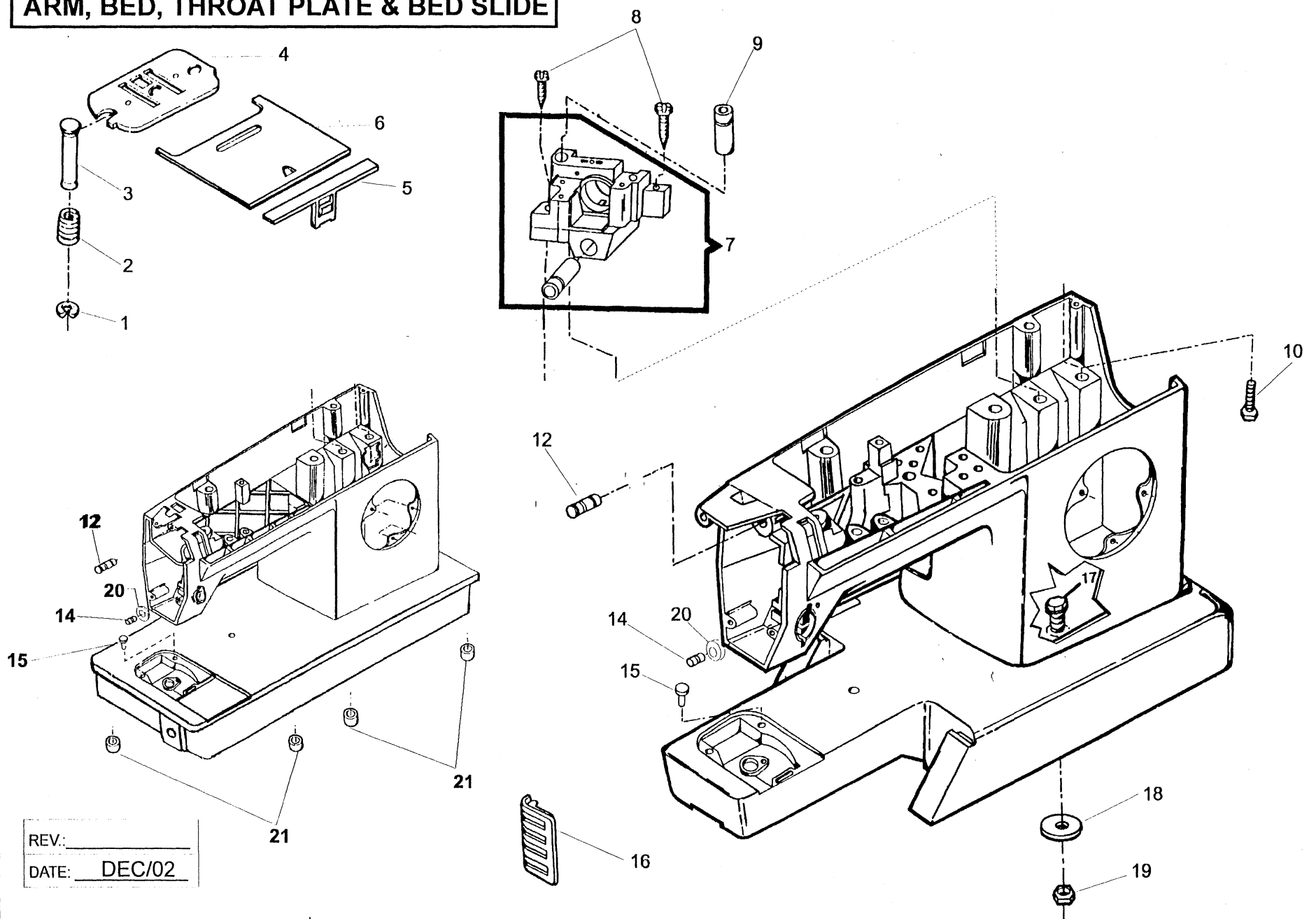
DATE: DEC/02

PARTS LIST

ADDITIONAL ACCESSORIES

REF.	P/N.	DESCRIPTION	9	9	9	5	C	9	9	9	9	9	9	5	9	9	9	5	9	9	9	5	5
			8	8	8	0	P	8	8	8	8	8	8	0	8	8	8	0	8	8	9	0	0
			0	0	0	1	1	0	0	1	1	1	1	2	1	2	2	4	3	3	3	5	6
			2	3	5	7	7	6	8	0	2	4	6	8	8	4	8	0	2	6	6	0	2
1	116863	FINGER GUARD	X	X	X	X	X	X	X	X	X	X	X	X	X	X	X	X	X	X	X	X	X
2	179911	PRESSER FOOT FOR BUTTON SEWING	X	X	X	X	X	X	X	X	X	X	X	X	X	X	X	X	X	X	X	X	X
3	313066	NEEDLE PLATE FOR STRAIGHT STITCH SEWING	X	X	X	X	X	X	X	X	X	X	X	X	X	X	X	X	X	X	X	X	X
5	356392-452	DUST COVER (SOFT VINYL)	X	X	X	X	X	X	X	X	X	X	X	X	X	X	X	X	X	X	X	X	X
6	357004-001	OIL CONTAINER COMPLETE	X	X	X	X	X	X	X	X	X	X	X	X	X	X	X	X	X	X	X	X	X
7	8879-656	SPOOL PIN FELT FOR TWIN NEEDLE	X	X	X	X	X	X	X	X	X	X	X	X	X	X	X	X	X	X	X	X	X
8	531868	NEEDLE PACK (ONE TWIN NEEDLE 2025-14)	X	X	X	X	X	X	X	X	X	X	X	X	X	X	X	X	X	X	X	X	X
9	153267	PRESSER FOOT PLATE (SNAP-ON) FOR STRAIGHT STITCH	X	X	X	X	X	X	X	X	X	X	X	X	X	X	X	X	X	X	X	X	X
10	356942-453	SPOOL PIN FOR TWIN NEEDLE	X	X	X	X	X	X	X	X	X	X	X	X	X	X	X	X	X	X	X	X	X

ARM, BED, THROAT PLATE & BED SLIDE



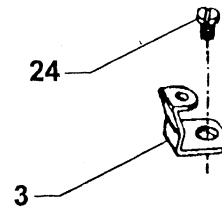
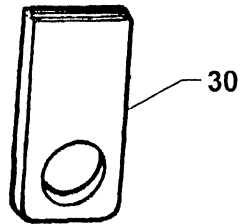
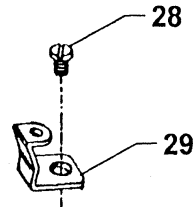
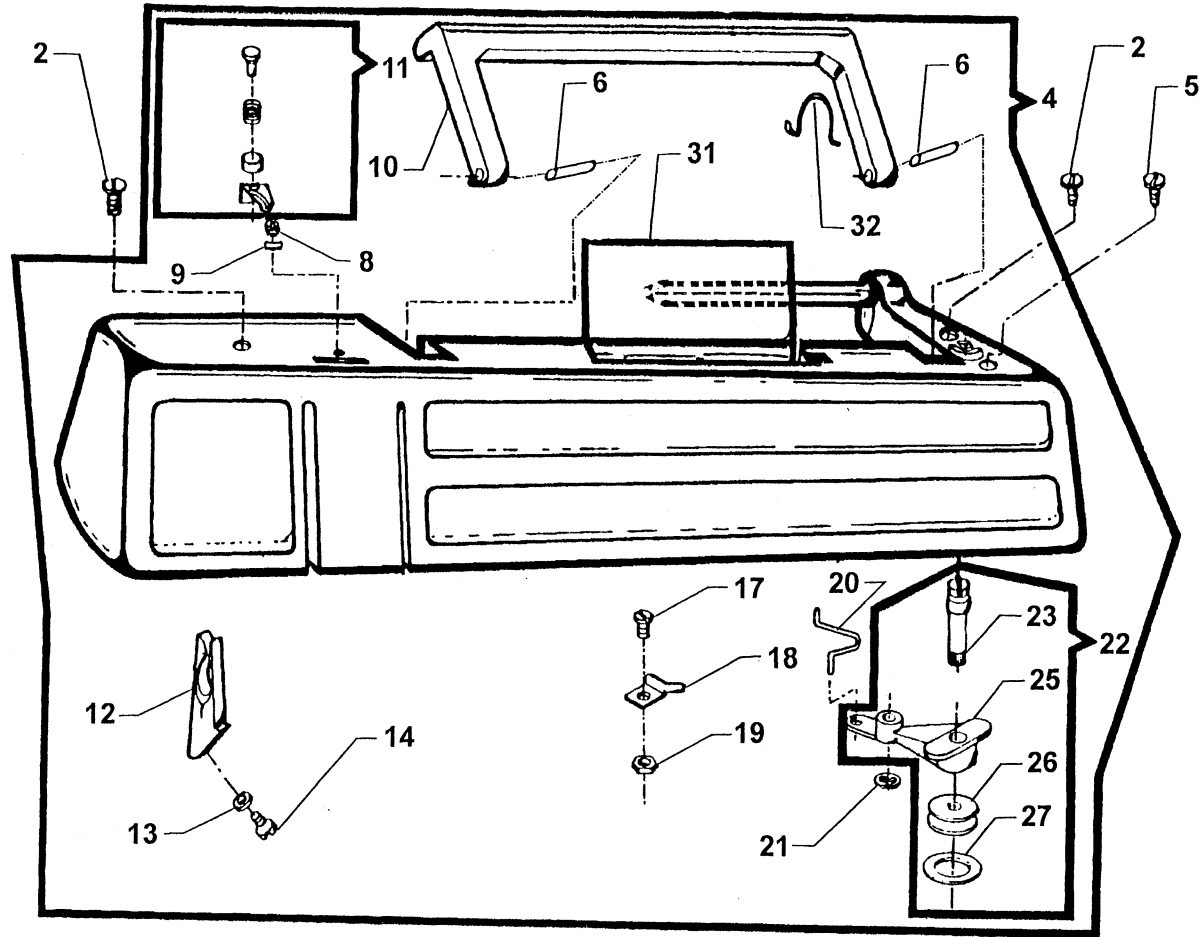
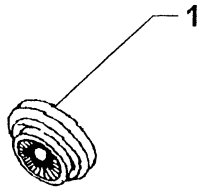
REV: _____
DATE: DEC/02

PARTS LIST

ARM, BED AND THROAT PLATE SLIDE

REF. PART NUME DESCRIPTION	9	9	9	5	C	9	9	9	9	9	9	5	9	9	9	5	9	9	9	5	5
	8	8	8	0	P	8	8	8	8	8	8	0	8	8	8	0	8	8	9	0	0
	0	0	0	1	1	0	0	1	1	1	1	2	1	2	2	4	3	3	3	5	6
	2	3	5	7	7	6	8	0	2	4	6	8	8	4	8	0	2	6	6	0	2
1 179926 THROAT PLATE CLAMP SPRING RETAINING RING	X	X	X	X	X	X	X	X	X	X	X	X	X	X	X	X	X	X	X	X	X
2 357611 THROAT PLATE CLAMP SPRING	X	X	X	X	X	X	X	X	X	X	X	X	X	X	X	X	X	X	X	X	X
3 353597 THROAT PLATE CLAMP	X	X	X	X	X	X	X	X	X	X	X	X	X	X	X	X	X	X	-	X	X
3 357445 THROAT PLATE CLAMP	-	-	-	-	-	-	-	-	-	-	-	-	-	-	-	-	-	-	-	X	X
4 356713 THROAT PLATE FOR ZIG-ZAG SEWING	X	X	X	X	X	X	X	X	X	X	X	X	X	X	X	X	X	X	X	X	X
5 446482 BED SLIDE SPRING (SNAP-ON)	X	X	X	X	X	X	X	X	X	X	X	X	X	X	X	X	X	X	X	X	X
6 356715 BED SLIDE	X	X	X	X	X	X	X	X	X	X	X	X	X	X	X	X	X	X	-	X	X
6 179982 BED SLIDE	-	-	-	-	-	-	-	-	-	-	-	-	-	-	-	-	-	-	-	X	X
7 357017-002 ARM SHAFT (REAR) HOUSING ASSEMBLY	X	X	X	X	X	X	X	X	X	X	X	X	X	X	X	X	X	X	X	X	X
8 113455-006 ARM SHAFT (REAR) HOUSING MOUNTING SCREW	X	X	X	X	X	X	X	X	X	X	X	X	X	X	X	X	X	X	X	X	X
9 357019 ARM TOP COVER SUPPORT STUD	X	X	X	X	X	X	X	X	X	X	X	X	X	X	X	X	X	X	X	X	X
10 357020-451 ARM SHAFT (REAR) HOUSING MOUNTING BOLT	X	X	X	X	X	X	X	X	X	X	X	X	X	X	X	X	X	X	X	X	X
12 446375 THREAD TAKE-UP LEVER LINK HINGE STUD	X	X	X	X	X	X	X	X	X	X	X	X	X	X	X	X	X	X	X	X	X
14 357438-001 TENSION RELEASING LEVER HINGE PIN	X	X	X	X	X	X	X	X	X	X	X	X	X	X	X	X	X	X	X	X	X
15 353624 THROAT PLATE POSITION PIN	X	X	X	X	X	X	X	X	X	X	X	X	X	X	X	X	X	X	X	X	X
16 356957-900 ARM INSERT MOTOR VENT GRILL	X	X	X	X	X	X	X	X	X	X	X	X	X	X	X	X	X	X	-	X	X
17 355250-451 BED (BOTTOM) COVER & GABINET BOLT	X	X	X	X	X	X	X	X	X	X	X	X	X	X	X	X	X	X	-	X	X
18 353375-451 BED (BOTTOM) COVER & GABINETE BOLT WASHER	X	X	X	X	X	X	X	X	X	X	X	X	X	X	X	X	X	X	-	X	X
19 514608 BED (BOTTOM) COVER & GABINET BOLT NUT	X	X	X	X	X	X	X	X	X	X	X	X	X	X	X	X	X	X	-	X	X
20 357464-002 TENSION RELEASING LEVER HINGE PIN WASHER	X	X	X	X	X	X	X	X	X	X	X	X	X	X	X	X	X	X	X	X	X
21 353559-451 UNDER BED COVER CUSHION	X	X	X	X	X	X	X	X	X	X	X	X	X	X	X	X	X	X	X	X	X

ARM TOP COVER



REV: _____
DATE: DEC/02

PARTS LIST

ARM TOP COVER

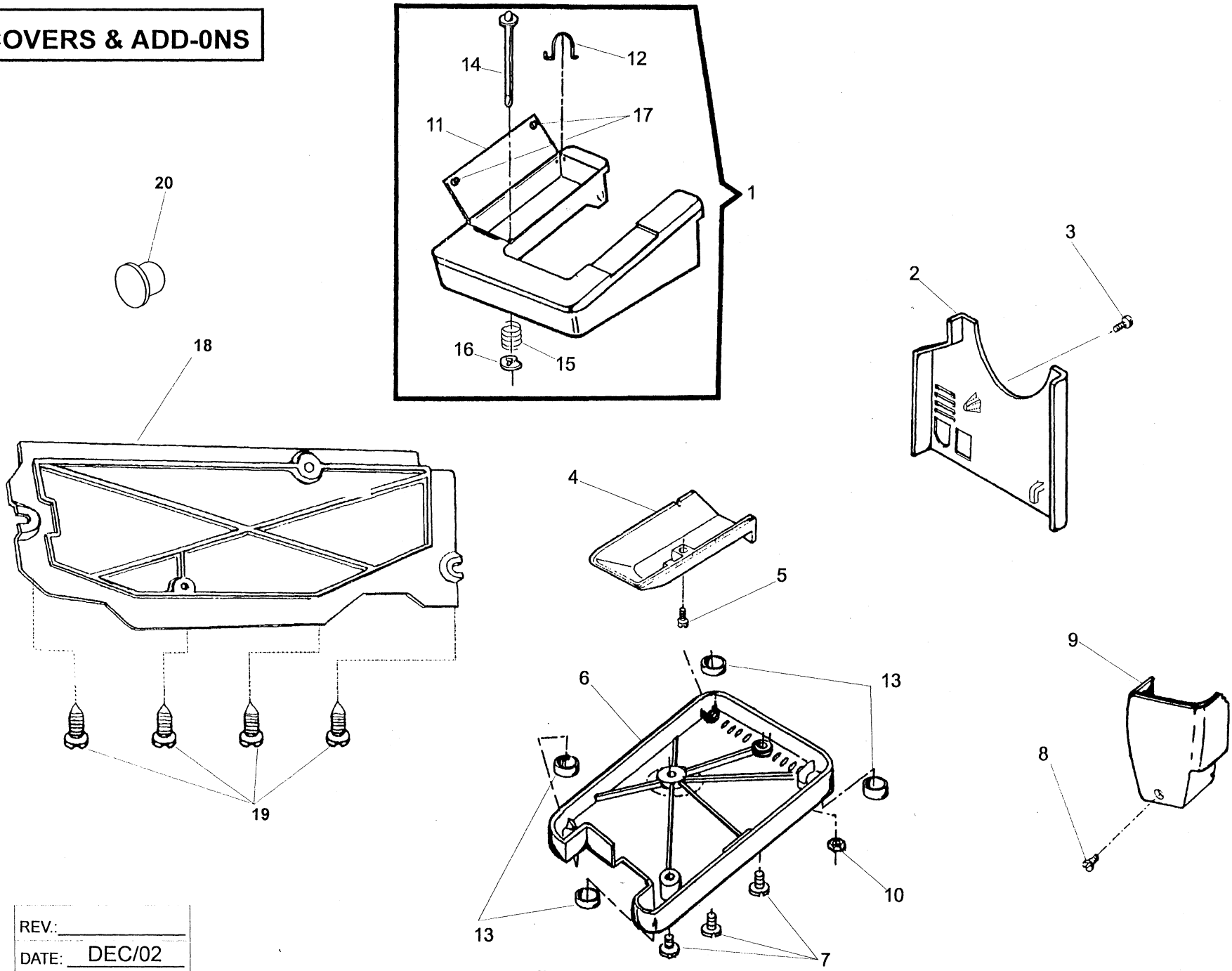
REF. ART NUMBE DESCRIPTION	9	9	9	5	C	9	9	9	9	9	9	5	9	9	9	5	9	9	9	5	5
	8	8	8	0	P	8	8	8	8	8	8	0	8	8	8	0	8	8	9	0	0
	0	0	0	1	1	0	0	1	1	1	1	2	1	2	2	4	3	3	3	5	6
	2	3	5	7	7	6	8	0	2	4	6	8	8	4	8	0	2	6	6	0	2
1 179967-461 ARM TOP COVER THREAD LEAD OFF (LARGE)	X	X	X	X	X	X	X	X	X	X	X	X	X	X	X	X	X	X	X	X	X
2 354895-453 ARM TOP COVER SCREW	X	X	X	X	X	X	X	X	X	X	X	X	X	X	X	X	X	X	X	X	X
3 353343 ARM TOP COVER MOUNTING BRACKET (RIGHT)	X	X	X	X	X	X	X	X	X	X	X	X	X	X	X	X	X	X	X	X	X
4 356990-XXX ARM TOP COVER COMPLETE	X	X	X	X	X	X	X	X	X	X	X	X	X	X	X	X	X	X	X	X	X
5 354975-451 ARM TOP COVER SCREW (RIGHT,FRONT)	X	X	X	X	X	X	X	X	X	X	X	X	X	X	X	X	X	X	X	X	X
6 357325-900 ARM TOP COVER MACHINE HANDLE HINGE PIN	X	X	X	X	X	X	X	X	X	X	X	X	X	X	X	X	X	X	X	X	X
8 141936-833 BOBBIN WINDER TENSION BRACKET ADJUSTING SCREW	X	X	X	X	X	X	X	X	X	X	X	X	X	X	X	X	X	X	X	X	X
9 44794 BOBBIN WINDER TENSION BKT.ADJUSTING SCREW RET.CLIP	X	X	X	X	X	X	X	X	X	X	X	X	X	X	X	X	X	X	X	X	X
10 357329-900 ARM TOP COVER MACHINE HANDLE	X	X	X	X	X	X	X	X	X	X	X	X	X	X	X	X	X	X	X	X	X
11 356047 BOBBIN WINDER TENSION COMPLETE	X	X	X	X	X	X	X	X	X	X	X	X	X	X	X	X	X	X	X	X	X
12 357084-451 ARM TOP COVER THREAD GUIDE	X	X	X	X	X	X	X	X	X	X	X	X	X	X	X	X	X	X	X	X	X
13 446138 ARM TOP COVER THREAD GUIDE SCREW WASHER	X	X	X	X	X	X	X	X	X	X	X	X	X	X	X	X	X	X	X	X	X
14 356116-451 ARM TOP COVER THREAD GUIDE SCREW	X	X	X	X	X	X	X	X	X	X	X	X	X	X	X	X	X	X	X	X	X
17 141920-455 BOBBIN WINDER STOP SCREW	X	X	X	X	X	X	X	X	X	X	X	X	X	X	X	X	X	X	X	X	X
18 445924 BOBBIN WINDER STOP	X	X	X	X	X	X	X	X	X	X	X	X	X	X	X	X	X	X	X	X	X
19 53640-819 BOBBIN WINDER STOP SCREW NUT	X	X	X	X	X	X	X	X	X	X	X	X	X	X	X	X	X	X	X	X	X
20 531766 BOBBIN WINDER HINGE STUD SPRING	X	X	X	X	X	X	X	X	X	X	X	X	X	X	X	X	X	X	X	X	X
21 445486 BOBBIN WINDER RETAINING RING	X	X	X	X	X	X	X	X	X	X	X	X	X	X	X	X	X	X	X	X	X
22 531767-452 BOBBIN WINDER ASSEMBLY	X	X	X	X	X	X	X	X	X	X	X	X	X	X	X	X	X	X	X	X	X
23 357081-452 BOBBIN WINDER SPINDLE COMPLETE	X	X	X	X	X	X	X	X	X	X	X	X	X	X	X	X	X	X	X	X	X
24 113455-001 ARM TOP COVER MOUNTING BRACKET SCREW	X	X	X	X	X	X	X	X	X	X	X	X	X	X	X	X	X	X	X	X	X
25 357082-452 BOBBIN WINDER FRAME	X	X	X	X	X	X	X	X	X	X	X	X	X	X	X	X	X	X	X	X	X
26 44440-001 BOBBIN WINDER PULLEY	X	X	X	X	X	X	X	X	X	X	X	X	X	X	X	X	X	X	X	X	X
27 15287-701	X	X	X	X	X	X	X	X	X	X	X	X	X	X	X	X	X	X	X	X	X
28 354826-451 ARM TOP COVER MOUNTING BRACKET SCREW	X	X	X	X	X	X	X	X	X	X	X	X	X	X	X	X	X	X	X	X	X
29 531765 ARM TOP COVER MOUNTING BRACKET (LEFT)	X	X	X	X	X	X	X	X	X	X	X	X	X	X	X	X	X	X	X	X	X
30 357008-451 ARM TOP COVER SHROUD	X	X	X	X	X	X	X	X	X	X	X	X	X	X	X	X	X	X	X	X	X
31 356954-451 ARM TOP COVER LID (WITH GRAPHICS)	-	-	-	-	-	-	-	-	-	-	-	-	-	X	X	X	X	X	X	X	X
31 356954-900 ARM TOP COVER LID (WITHOUT GRAPHICS)	X	X	X	X	X	X	X	X	X	X	X	X	-	-	-	-	-	-	-	X	X
32 357002 ARM TOP COVER LID SPRING	X	X	X	X	X	X	X	X	X	X	X	X	X	X	X	X	X	X	X	X	X

NOTE: PLEASE WHEN NEED THE PART NUMBER(-----XXX), INDICATE THE MACHINE MODEL WHERE WILL BE USED.

9800/5017/5028/5040/5050/CP-17/5062
P/N 357596-001

Adopt.
DEC, 1998

COVERS & ADD-ONS



REV: _____
DATE: DEC/02

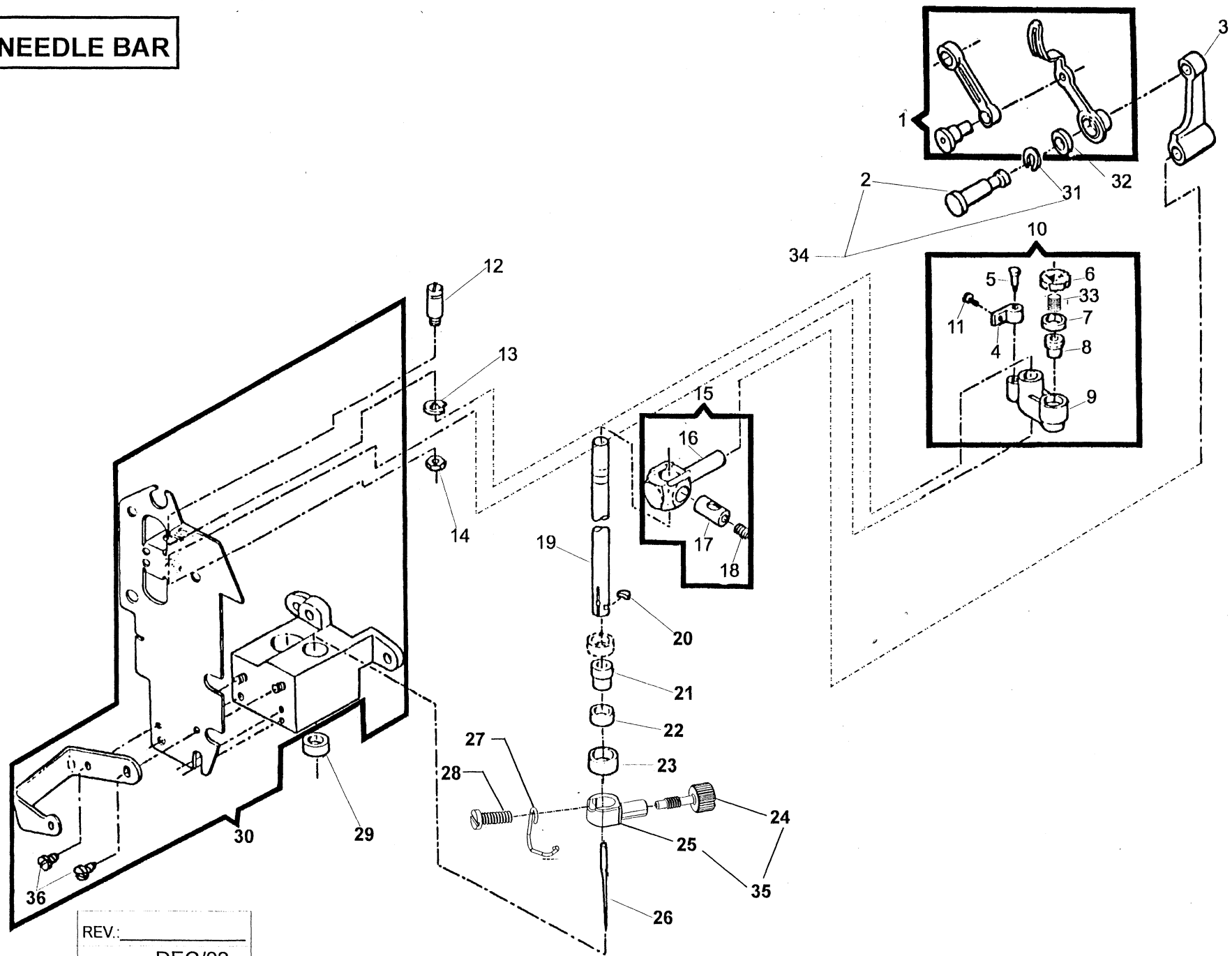
PARTS LIST

COVERS AND ADD-NOS

REF.	P/N	DESCRIPTION	9	9	9	5	C	9	9	9	9	9	9	5	9	9	9	5	9	9	9	5	5
			8	8	8	0	P	8	8	8	8	8	8	0	8	8	8	0	8	8	9	0	0
			0	0	0	1	1	0	0	1	1	1	1	2	1	2	2	4	3	3	3	5	6
			2	3	5	7	7	6	8	0	2	4	6	8	8	4	8	0	2	6	6	0	2
1	356989-451	BED EXTENSION PLATE	X	X	X	X	X	X	X	X	X	X	X	X	X	X	X	X	X	X	X	X	X
2	356953-XXX	ARM END COVER	-	-	-	-	-	-	-	-	-	-	-	-	-	-	-	-	-	-	-	X	X
3	364063-451	ARM END COVER SCREW	X	X	X	X	X	X	X	X	X	X	X	X	X	X	X	X	X	X	X	X	X
4	446493-453	BED (TUBULAR) BOTTOM COVER (PLASTIC)	X	X	X	X	X	X	X	X	X	X	X	X	X	X	X	X	X	X	X	X	X
5	354895-453	BED (TUBULAR) BOTTOM COVER FASTENING SCREW	X	X	X	X	X	X	X	X	X	X	X	X	X	X	X	X	X	X	X	X	X
6	356929-451	BED (BOTTOM) COVER (PLASTIC)	X	X	X	X	X	X	X	X	X	X	X	X	X	X	X	X	X	X	X	X	X
7	113455-001	BED (BOTTOM) COVER FASTENING SCREW	X	X	X	X	X	X	X	X	X	X	X	X	X	X	X	X	X	X	X	X	X
8	354133-453	FACE PLATE SCREW	X	X	X	X	X	X	X	X	X	X	X	X	X	X	X	X	X	X	X	X	X
9	356986-XXX	FACE PLATE COMPLETE (WITH GRILL)	-	-	-	-	-	-	-	-	-	-	-	-	-	-	-	-	-	-	-	X	X
9	356987-XXX	FACE PLATE COMPLETE (WITHOUT GRILL)	-	-	-	-	-	-	-	-	-	-	-	-	-	-	-	-	-	-	-	X	X
10	514608	BED (BOTTOM) COVER FASTENING SCREW NUT	X	X	X	X	X	X	X	X	X	X	X	X	X	X	X	X	X	X	X	X	X
11	356956-451	BED EXTENSION LID	X	X	X	X	X	X	X	X	X	X	X	X	X	X	X	X	X	X	X	X	X
12	357002	BED EXTENSION SPRING	X	X	X	X	X	X	X	X	X	X	X	X	X	X	X	X	X	X	X	X	X
13	353559-451	BED CUSHION	X	X	X	X	X	X	X	X	X	X	X	X	X	X	X	X	X	X	X	X	X
14	357056-451	BED EXTENSION CLOTH PLATE LID LIFTING PIN	X	X	X	X	X	X	X	X	X	X	X	X	X	X	X	X	X	X	X	X	X
15	357059	BED EXTENSION CLOTH PLATE LID LIFTING PIN SPRING	X	X	X	X	X	X	X	X	X	X	X	X	X	X	X	X	X	X	X	X	X
16	446417	BED EXTENSION CLOTH PLATE LID LIFTING PIN RETAINING RING	X	X	X	X	X	X	X	X	X	X	X	X	X	X	X	X	X	X	X	X	X
17	357064	BED EXTENSION CLOTH PLATE CUSHION	X	X	X	X	X	X	X	X	X	X	X	X	X	X	X	X	X	X	X	X	X
18	357356-452	UNDER BED COVER (PLASTIC)	-	-	-	-	-	-	-	-	-	-	-	-	-	-	-	-	-	-	-	X	X
19	113455-003	UNDER BED COVER SCREW	-	-	-	-	-	-	-	-	-	-	-	-	-	-	-	-	-	-	-	X	X
20	357674-000	BAD HOLE PLUG	-	-	-	-	-	-	-	-	-	-	-	-	-	-	-	-	-	-	-	X	X

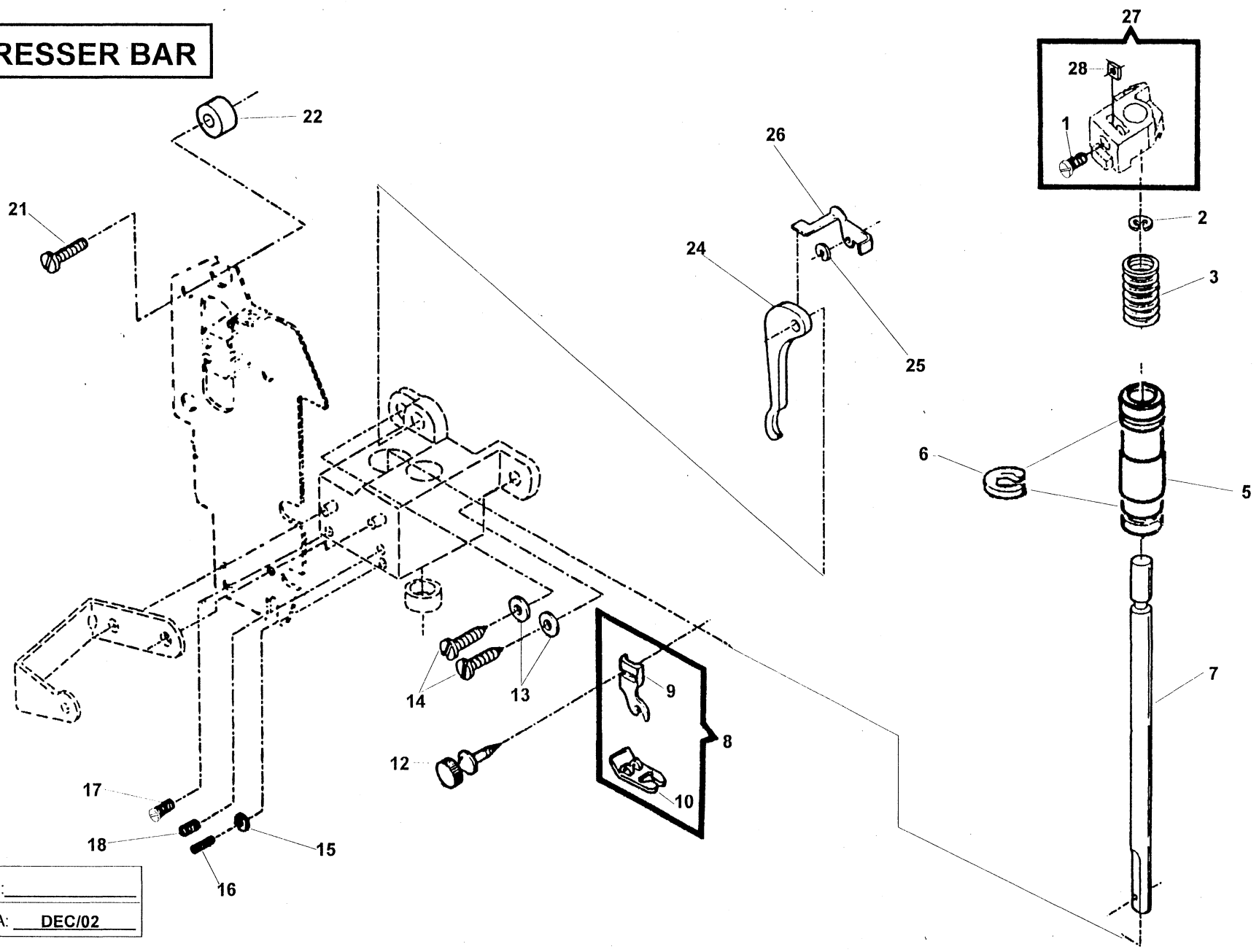
NOTE: PLEASE WHEN NEED THE PART(-----XXX), INDICATE THE MACHINE MODEL WHERE WILL BE USED.

NEEDLE BAR



REV: _____
DATE: DEC/02

PRESSER BAR



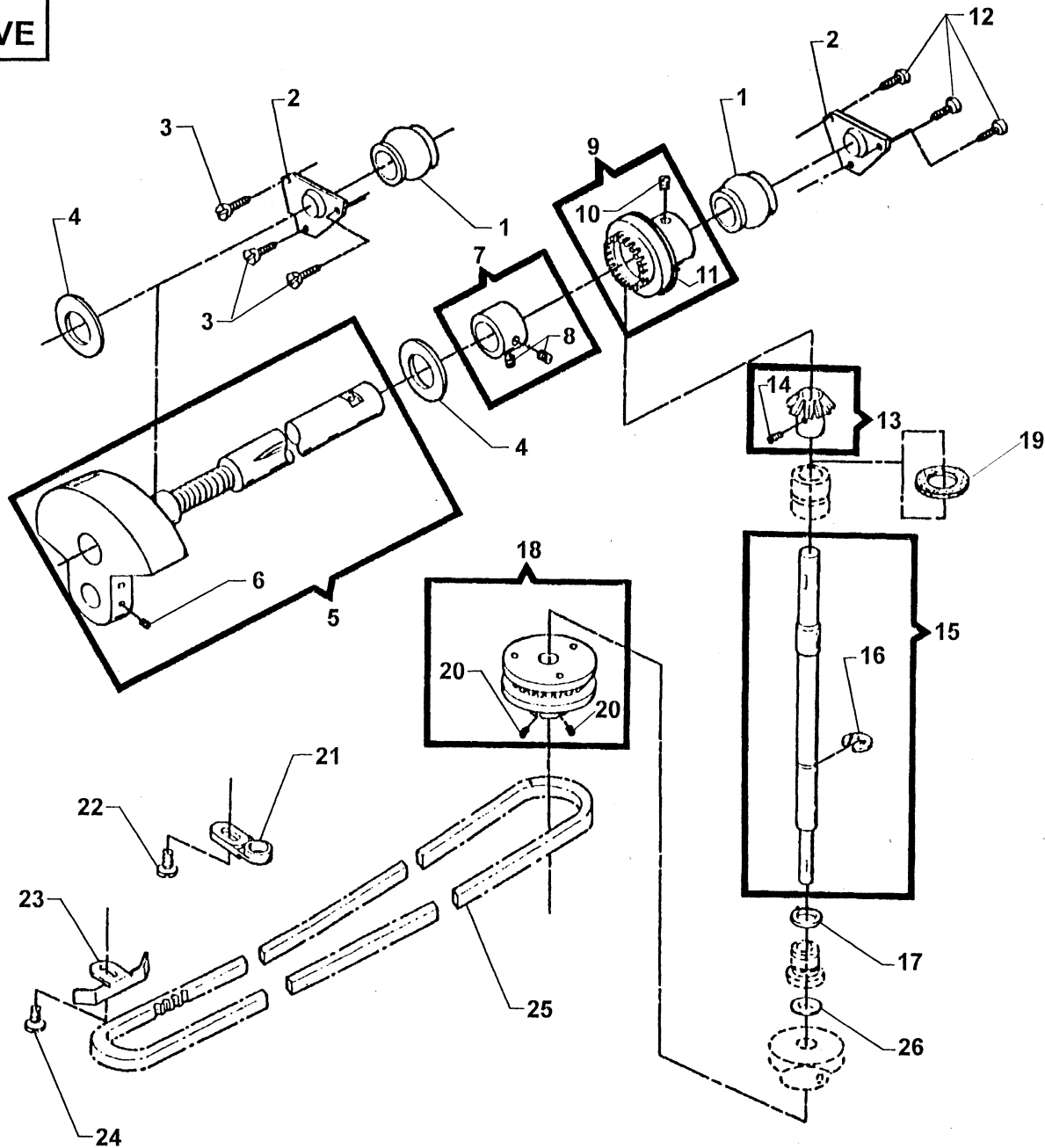
REV.: _____
DATA: DEC/02

PARTS LIST

PRESSER BAR

REF.	P/N	DESCRIPTION	9	9	9	5	C	9	9	9	9	9	9	5	9	9	9	5	9	9	9	5	5
			8	8	8	0	P	8	8	8	8	8	8	0	8	8	8	0	8	8	9	0	0
			0	0	0	1	1	0	0	1	1	1	1	2	1	2	2	4	3	3	3	5	6
			2	3	5	7	7	6	8	0	2	4	6	8	8	4	8	0	2	6	6	0	2
1	355279-451	PRESSER BAR GUIDE BRACKET SET SCREW	X	X	X	X	X	X	X	X	X	X	X	X	X	X	X	X	X	X	X	X	X
2	353215	PRESSER BAR SPRING RETAINING RING (UPPER)	X	X	X	X	X	X	X	X	X	X	X	X	X	X	X	X	X	X	X	X	X
3	357362	PRESSER BAR SPRING	X	X	X	X	X	X	X	X	X	X	X	X	X	X	X	X	X	X	X	X	X
5	445947-001	PRESSER BAR BUSHING	X	X	X	X	X	X	X	X	X	X	X	X	X	X	X	X	X	X	X	X	X
6	357604	PRESSER BAR BUSHING LOCATING RING	X	X	X	X	X	X	X	X	X	X	X	X	X	X	X	X	X	X	X	X	X
7	357602	PRESSER BAR	X	X	X	X	X	X	X	X	X	X	X	X	X	X	X	X	X	X	X	X	X
8	446372	PRESSER FOOT (SNAP-ON) COMPLETE FOR ZIG-ZAG SEWING	X	X	X	X	X	X	X	X	X	X	X	X	X	X	X	X	X	X	X	X	X
9	155964	PRESSER FOOT SHANK (SNAP-ON)	X	X	X	X	X	X	X	X	X	X	X	X	X	X	X	X	X	X	X	X	X
10	446371	PRESSER FOOT PLATE (SNAP-ON) FOR ZIG-ZAG SEWING	X	X	X	X	X	X	X	X	X	X	X	X	X	X	X	X	X	X	X	X	X
11	357363	PRESSER BAR GUIDE BACKET ASSEMBLY	X	X	X	X	X	X	X	X	X	X	X	X	X	X	X	X	X	X	X	X	X
12	354135-452	PRESSER FOOT THUMB SCREW	X	X	X	X	X	X	X	X	X	X	X	X	X	X	X	X	X	X	X	X	X
13	353375-451	NEEDLE BAR, PRESSER BAR & VIBRATING BRACKET HOUSING MOUNTING SCREW (LOWER) WASHER	X	X	X	X	X	X	X	X	X	X	X	X	X	X	X	X	X	X	X	X	X
14	113434-451	NEEDLE BAR, PRESSER BAR & VIBRATING BRACKET HOUSING MOUNTING SCREW (LOWER)	X	X	X	X	X	X	X	X	X	X	X	X	X	X	X	X	X	X	X	X	X
15	54591-451	NEEDLE BAR OVER THROW SET SCREW NUT	X	X	X	X	X	X	X	X	X	X	X	X	X	X	X	X	X	X	X	X	X
16	354993-451	NEEDLE BAR OVER THROW SET SCREW	X	X	X	X	X	X	X	X	X	X	X	X	X	X	X	X	X	X	X	X	X
17	354906-451	PRESSER BAR BUSHING SET SCREW	X	X	X	X	X	X	X	X	X	X	X	X	X	X	X	X	X	X	X	X	X
18	141938-833	NEEDLE BAR BALL BUSHING (LOWER) ADJ. COLLAR SET SCREW	X	X	X	X	X	X	X	X	X	X	X	X	X	X	X	X	X	X	X	X	X
21	113455-009	NEEDLE BAR & PRESSER BAR VIBRATING BRACKET HOUSING MOUNTING SCREW (UPPER)	X	X	X	X	X	X	X	X	X	X	X	X	X	X	X	X	X	X	X	X	X
22	531627	NEEDLE BAR, PRESSER BAR & VIBRATING BRACKET HOUSING HOUSING MOUNTING BUSHING	X	X	X	X	X	X	X	X	X	X	X	X	X	X	X	X	X	X	X	X	X
24	356170-451	PRESSER BAR LIFTER	X	X	X	X	X	X	X	X	X	X	X	X	X	X	X	X	X	X	X	X	X
25	445486	TENSION RELEASING LEVER RETAINING RING	X	X	X	X	X	X	X	X	X	X	X	X	X	X	X	X	X	X	X	X	X
26	445925	TENSION RELEASING LEVER	X	X	X	X	X	X	X	X	X	X	X	X	X	X	X	X	X	X	X	X	X
27	353367-451	PRESSER BAR GUIDE BRACKET NUT	X	X	X	X	X	X	X	X	X	X	X	X	X	X	X	X	X	X	X	X	X

ARM SHAFT DRIVE



REV: _____
DATE: DEC/02

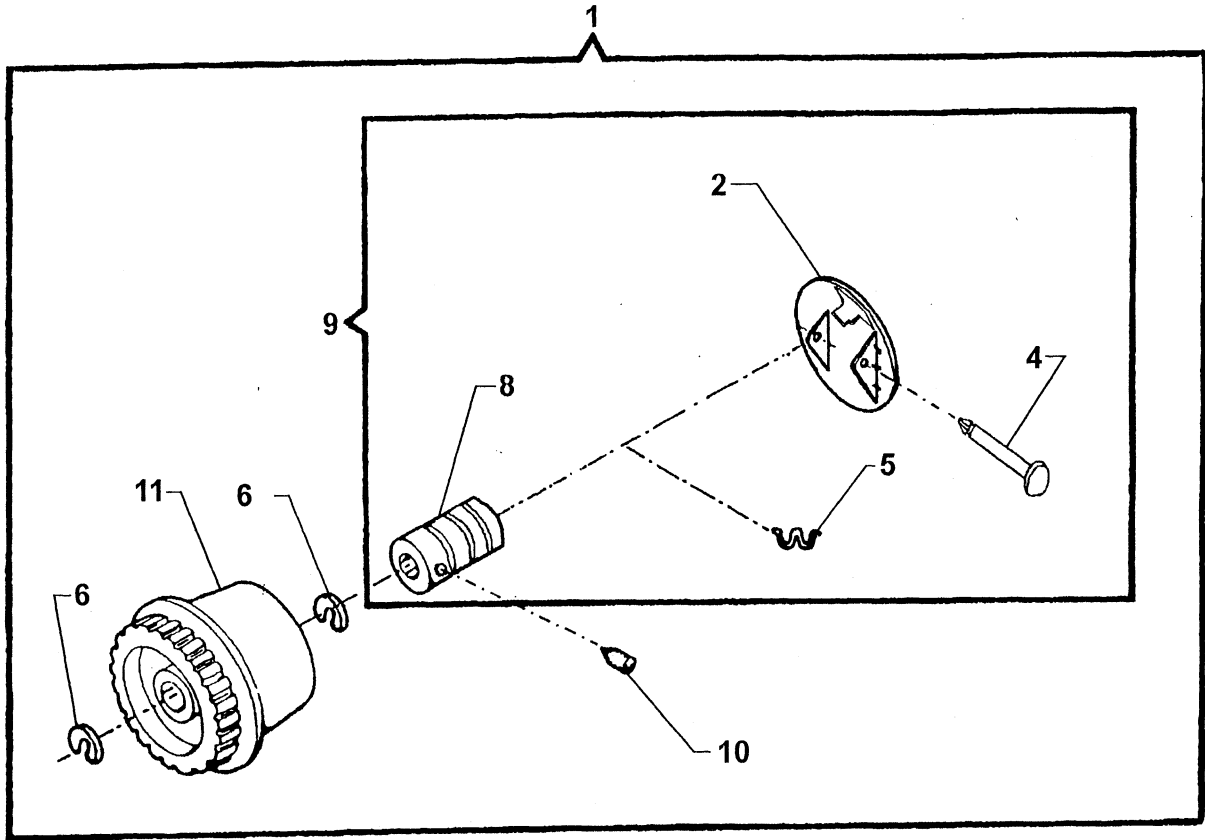
PARTS LIST

ARM SHAFT DRIVE

9 9 9 5 C 9 9 9 9 9 9 5 9 9 9 5 9 9 9 5 9
 8 8 8 0 P 8 8 8 8 8 8 0 8 8 8 0 8 8 9 0 0
 0 0 0 1 1 0 0 1 1 1 1 2 1 2 2 4 3 3 3 5 6
 2 3 5 7 7 6 8 0 2 4 6 8 8 4 8 0 2 6 6 0 2

REF. P/N	DESCRIPTION	2	3	5	7	7	6	8	0	2	4	6	8	8	4	8	0	2	6	6	0	2	
1	446384 ARM SHAFT BUSHING (FRONT)	X	X	X	X	X	X	X	X	X	X	X	X	X	X	X	X	X	X	X	X	X	X
2	446385 ARM SHAFT BUSHING (FRONT) RETAINING BRACKET	X	X	X	X	X	X	X	X	X	X	X	X	X	X	X	X	X	X	X	X	X	X
3	113455-001 ARM SHAFT BUSHING (FRONT) RETAINING BRACKET SCREW	X	X	X	X	X	X	X	X	X	X	X	X	X	X	X	X	X	X	X	X	X	X
4	319764 ARM SHAFT (HORIZONTAL)RETAINING COLLAR WASHER	X	X	X	X	X	X	X	X	X	X	X	X	X	X	X	X	X	X	X	X	X	X
5	531684 ARM SHAFT COMPLETE	X	X	X	X	X	X	X	X	X	X	X	X	X	X	X	X	X	X	X	X	X	X
3	354105-833 THREAD TAKE- UP SET SCREW	X	X	X	X	X	X	X	X	X	X	X	X	X	X	X	X	X	X	X	X	X	X
7	353580 ARM SHAFT (HORIZONTAL) RETAINING COLLAR	X	X	X	X	X	X	X	X	X	X	X	X	X	X	X	X	X	X	X	X	X	X
3	113500-451 ARM SHAFT (HORIZONTAL) RETAINING COLLAR SET SCREW	X	X	X	X	X	X	X	X	X	X	X	X	X	X	X	X	X	X	X	X	X	X
9	353272 ARM SHAFT (HORIZONTAL) BEVEL GEAR & FEED LIFTING (ECCENTRIC) COMPLETE	X	X	X	X	X	X	X	X	X	X	X	X	X	X	X	X	X	X	X	X	X	X
10	354813-451 ARM SHAFT (HORIZONTAL) BEVEL GEAR & FEED LIFTING ECCENTRIC SET SCREW	X	X	X	X	X	X	X	X	X	X	X	X	X	X	X	X	X	X	X	X	X	X
11	353413 ARM SHAFT (HORIZONTAL) BEVEL GEAR & FEED LIFTING ECCENTRIC WASHER (PLASTIC)	X	X	X	X	X	X	X	X	X	X	X	X	X	X	X	X	X	X	X	X	X	X
12	113455-001 ARM SHAFT BUSHING (REAR) RETAINING BRACKET SCREW	X	X	X	X	X	X	X	X	X	X	X	X	X	X	X	X	X	X	X	X	X	X
13	353273-002 ARM SHAFT (UPRIGHT) BEVEL GEAR (PLASTIC)	X	X	X	X	X	X	X	X	X	X	X	X	X	X	X	X	X	X	X	X	X	X
14	354105-833 ARM SHAFT (UPRIGHT) BEVEL GEAR SET SCREW	X	X	X	X	X	X	X	X	X	X	X	X	X	X	X	X	X	X	X	X	X	X
15	179952-002 ARM SHAFT (UPRIGHT) ASSEMBLY	X	X	X	X	X	X	X	X	X	X	X	X	X	X	X	X	X	X	X	X	X	X
16	353215 ARM SHAFT (UPRIGHT) RETAINING RING	X	X	X	X	X	X	X	X	X	X	X	X	X	X	X	X	X	X	X	X	X	X
17	353394 ARM SHAFT (UPRIGHT) RETAINING RING WASHER	X	X	X	X	X	X	X	X	X	X	X	X	X	X	X	X	X	X	X	X	X	X
18	353438-001 ARM SHAFT (UPRIGHT) BELT DRIVE PULLEY ASSEMBLY COMPLETE	X	X	X	X	X	X	X	X	X	X	X	X	X	X	X	X	X	X	X	X	X	X
19	356819 ARM SHAFT (UPRIGHT) FELT WASHER	X	X	X	X	X	X	X	X	X	X	X	X	X	X	X	X	X	X	X	X	X	X
20	354906-451 ARM SHAFT (UPRIGHT) BELT DRIVE PULLEY RETAINING COLLAR SET SCREW	X	X	X	X	X	X	X	X	X	X	X	X	X	X	X	X	X	X	X	X	X	X
21	357461 ROTATING HOOK DRIVE BELT TENSION ADJUSTER	X	X	X	X	X	X	X	X	X	X	X	X	X	X	X	X	X	X	X	X	X	X
22	113453-003 ROTATING HOOK DRIVE BELT TENSIONER SCREW	X	X	X	X	X	X	X	X	X	X	X	X	X	X	X	X	X	X	X	X	X	X
23	446376 BELT RETAINER (LEFT)	X	X	X	X	X	X	X	X	X	X	X	X	X	X	X	X	X	X	X	X	X	X
24	113455-001 BELT RETAINER (LEFT) SCREW	X	X	X	X	X	X	X	X	X	X	X	X	X	X	X	X	X	X	X	X	X	X
25	446237 BELT (ROTATING HOOK DRIVE)	X	X	X	X	X	X	X	X	X	X	X	X	X	X	X	X	X	X	X	X	X	X
26	319826 ARM SHAFT (UPRIGHT) BELT DRIVE PULLEY WASHER	X	X	X	X	X	X	X	X	X	X	X	X	X	X	X	X	X	X	X	X	X	X

HAND WHEEL



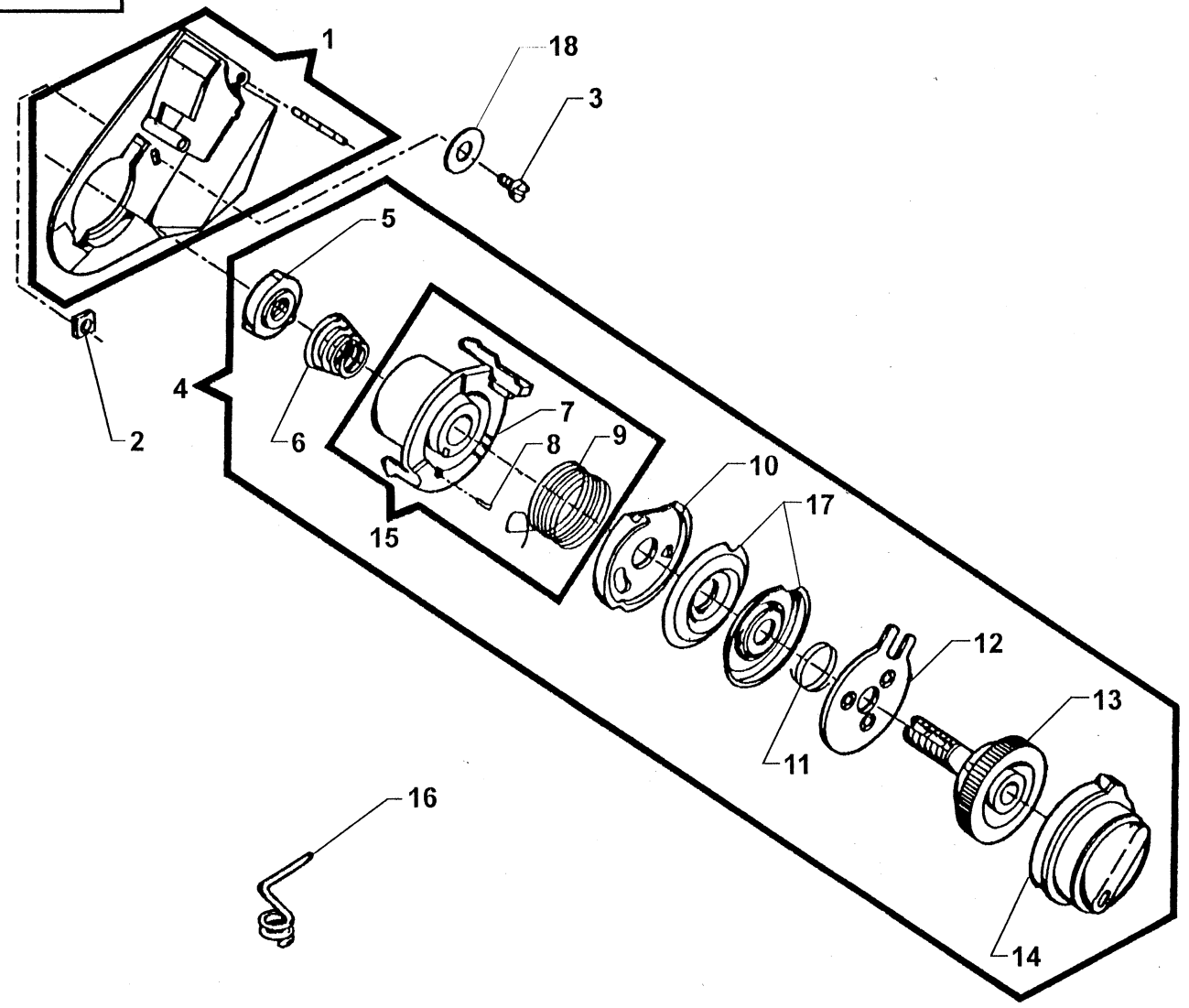
REV: _____
DATA: DEC/02

PARTS LIST

HAND WHEEL

REF.	P/N	DESCRIPTION	9	9	9	5	C	9	9	9	9	9	9	5	9	9	9	5	9	9	9	5	5
			8	8	8	0	P	8	8	8	8	8	8	0	8	8	8	0	8	8	9	0	0
			0	0	0	1	1	0	0	1	1	1	1	2	1	2	2	4	3	3	3	5	6
			2	3	5	7	7	6	8	0	2	4	6	8	8	4	8	0	2	6	6	0	2
1	357009-451	HAND WHEEL (ELECTRIC) COMPLETE	X	X	X	X	X	X	X	X	X	X	X	X	X	X	X	X	X	X	X	X	X
2	357367-901	HAND WHEEL DISENGAGING CLUTCH ENGAGING PLATE COVER	X	X	X	X	X	X	X	X	X	X	X	X	X	X	X	X	X	X	X	X	X
4	357364	HAND WHEEL DIS. CLUTCH ENGAGING PLATE HINGE PIN	X	X	X	X	X	X	X	X	X	X	X	X	X	X	X	X	X	X	X	X	X
5	357365	HAND WHEEL DISENGAGING CLUTCH ACTUATING SPRING	X	X	X	X	X	X	X	X	X	X	X	X	X	X	X	X	X	X	X	X	X
6	446387	HAND WHEEL RETAINING RING (TREADLE/ELECTRIC)	X	X	X	X	X	X	X	X	X	X	X	X	X	X	X	X	X	X	X	X	X
8	357359	HAND WHEEL DISENGAGING CLUTCH BUSHING	X	X	X	X	X	X	X	X	X	X	X	X	X	X	X	X	X	X	X	X	X
9	357368-452	HAND WHEEL DISENGAGING CLUTCH BUSHING COMPLETE	X	X	X	X	X	X	X	X	X	X	X	X	X	X	X	X	X	X	X	X	X
10	354813-451	HAND WHEEL DISENGAGING CLUTCH BUSHING SCREW	X	X	X	X	X	X	X	X	X	X	X	X	X	X	X	X	X	X	X	X	X
11	356958-451	HAND WHEEL (PLASTIC)	X	X	X	X	X	X	X	X	X	X	X	X	X	X	X	X	X	X	X	X	X

TENSION MECHANISM



REV: _____
DATA: DEC/02

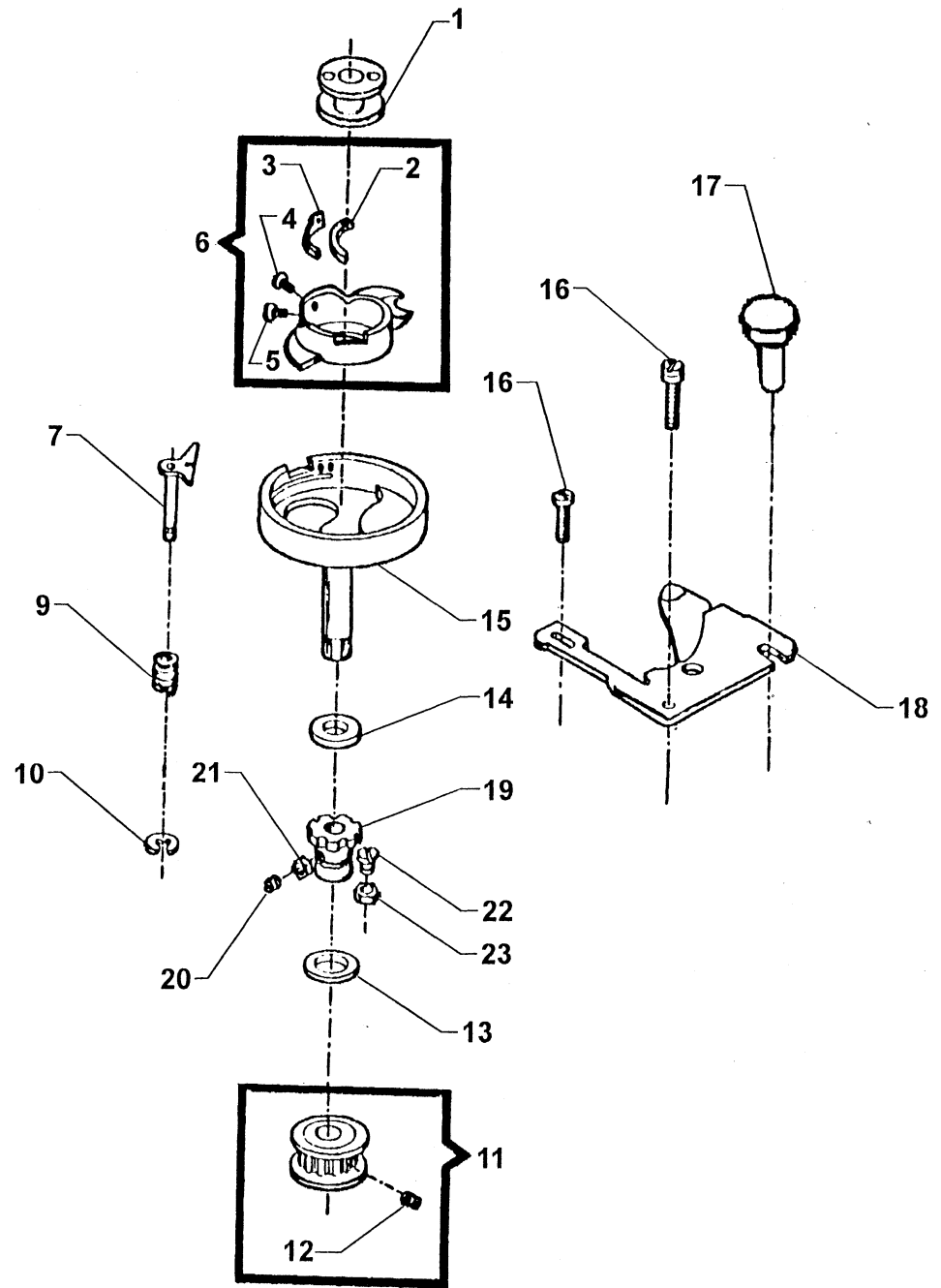
PARTS LIST

TENSION MECHANISM

REF.	P/N	DESCRIPTION	9	9	9	5	C	9	9	9	9	9	9	5	9	9	9	5	9	9	9	5	5
			8	8	8	0	P	8	8	8	8	8	8	0	8	8	8	0	8	8	9	0	0
			0	0	0	1	1	0	0	1	1	1	1	2	1	2	2	4	3	3	3	5	6
			2	3	5	7	7	6	8	0	2	4	6	8	8	4	8	0	2	6	6	0	2
1	356040-452	TENSION MECHANISM SHROUDER ASSEMBLY	X	X	X	X	X	X	X	X	X	X	X	X	X	X	X	X	X	X	X	X	X
2	514698-451	TENSION MECHANISM SHROUDER SCREW NUT	X	X	X	X	X	X	X	X	X	X	X	X	X	X	X	X	X	X	X	X	X
3	141808-457	TENSION MECHANISM SHROUDER SCREW	X	X	X	X	X	X	X	X	X	X	X	X	X	X	X	X	X	X	X	X	X
4	356088-XXX	TENSION MECHANISM ASSEMBLY	X	X	X	X	X	X	X	X	X	X	X	X	X	X	X	X	X	X	X	X	X
5	356095	TENSION STUD NUT	X	X	X	X	X	X	X	X	X	X	X	X	X	X	X	X	X	X	X	X	X
6	356096	TENSION SPRING	X	X	X	X	X	X	X	X	X	X	X	X	X	X	X	X	X	X	X	X	X
7	356089	TENSION MECHANISM SUPPORT	X	X	X	X	X	X	X	X	X	X	X	X	X	X	X	X	X	X	X	X	X
8	356246-900	TENSION MECHANISM SUPPORT PIN	X	X	X	X	X	X	X	X	X	X	X	X	X	X	X	X	X	X	X	X	X
9	356097	THREAD TAKE-UP SPRING	X	X	X	X	X	X	X	X	X	X	X	X	X	X	X	X	X	X	X	X	X
10	356091	THREAD TAKE-UP SPRING THREAD GUARD	X	X	X	X	X	X	X	X	X	X	X	X	X	X	X	X	X	X	X	X	X
11	356216	TENSION DISC PRESSURE PLATE SPRING	X	X	X	X	X	X	X	X	X	X	X	X	X	X	X	X	X	X	X	X	X
12	356177	TENSION DISC PRESSURE PLATE	X	X	X	X	X	X	X	X	X	X	X	X	X	X	X	X	X	X	X	X	X
13	356092-451	TENSION INDICATOR WITH STUD	X	X	X	X	X	X	X	X	X	X	X	X	X	X	X	X	X	X	X	X	X
14	356090-XXX	TENSION INDICATOR DIAL	X	X	X	X	X	X	X	X	X	X	X	X	X	X	X	X	X	X	X	X	X
15	356245	TENSION MECHANISM SUPORT ASSEMBLY	X	X	X	X	X	X	X	X	X	X	X	X	X	X	X	X	X	X	X	X	X
16	445784	THREAD GUIDE (LOWER)	X	X	X	X	X	X	X	X	X	X	X	X	X	X	X	X	X	X	X	X	X
17	356094	TENSION DISC	X	X	X	X	X	X	X	X	X	X	X	X	X	X	X	X	X	X	X	X	X
18	356443	TENSION MECHANISM SHROUDER WASHER	X	X	X	X	X	X	X	X	X	X	X	X	X	X	X	X	X	X	X	X	X

NOTE: PLEASE WHEN NEED THE PART NUMBER(-----XXX), INDICATE THE MACHINE MODEL WHERE WILL BE USED..

HOOK SYSTEM



REV: _____
DATA: DEC/02

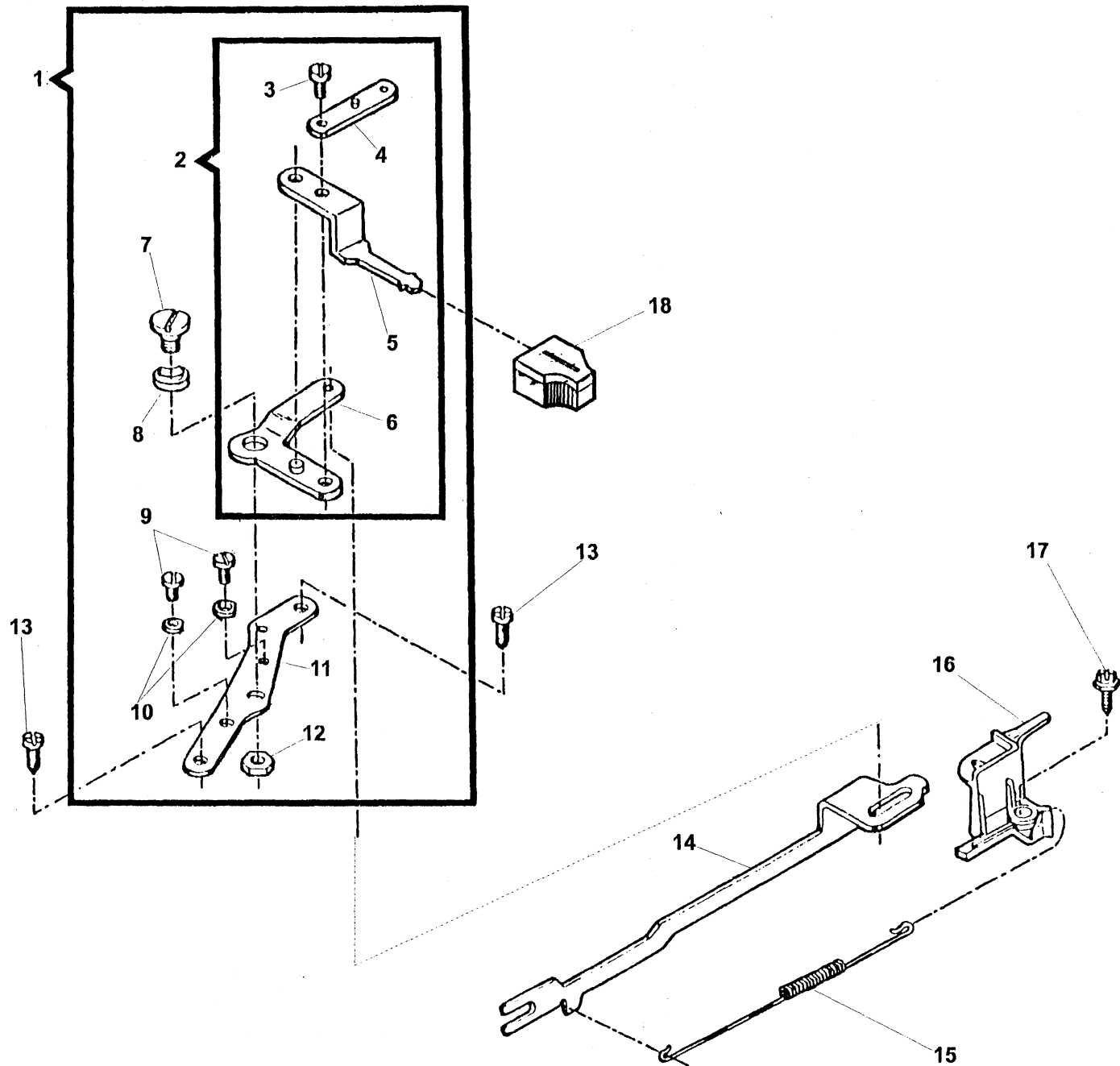
PARTS LIST

HOOK SYSTEM

REF.	P/N	DESCRIPTION	9	9	9	5	C	9	9	9	9	9	9	5	9	9	9	5	9	9	9	5	5
			8	8	8	0	P	8	8	8	8	8	8	0	8	8	8	0	8	8	9	0	0
			0	0	0	1	1	0	0	1	1	1	1	2	1	2	2	4	3	3	3	5	6
			2	3	5	7	7	6	8	0	2	4	6	8	8	4	8	0	2	6	6	0	2
1	356040-452	TENSION MECHANISM SHROUDER ASSEMBLY	X	X	X	X	X	X	X	X	X	X	X	X	X	X	X	X	X	X	X	X	X
2	514698-451	TENSION MECHANISM SHROUDER SCREW NUT	X	X	X	X	X	X	X	X	X	X	X	X	X	X	X	X	X	X	X	X	X
3	141808-457	TENSION MECHANISM SHROUDER SCREW	X	X	X	X	X	X	X	X	X	X	X	X	X	X	X	X	X	X	X	X	X
4	356088-XXX	TENSION MECHANISM ASSEMBLY	X	X	X	X	X	X	X	X	X	X	X	X	X	X	X	X	X	X	X	X	X
5	356095	TENSION STUD NUT	X	X	X	X	X	X	X	X	X	X	X	X	X	X	X	X	X	X	X	X	X
6	356096	TENSION SPRING	X	X	X	X	X	X	X	X	X	X	X	X	X	X	X	X	X	X	X	X	X
7	356089	TENSION MECHANISM SUPPORT	X	X	X	X	X	X	X	X	X	X	X	X	X	X	X	X	X	X	X	X	X
8	356246-900	TENSION MECHANISM SUPPORT PIN	X	X	X	X	X	X	X	X	X	X	X	X	X	X	X	X	X	X	X	X	X
9	356097	THREAD TAKE-UP SPRING	X	X	X	X	X	X	X	X	X	X	X	X	X	X	X	X	X	X	X	X	X
10	356091	THREAD TAKE-UP SPRING THREAD GUARD	X	X	X	X	X	X	X	X	X	X	X	X	X	X	X	X	X	X	X	X	X
11	356216	TENSION DISC PRESSURE PLATE SPRING	X	X	X	X	X	X	X	X	X	X	X	X	X	X	X	X	X	X	X	X	X
12	356177	TENSION DISC PRESSURE PLATE	X	X	X	X	X	X	X	X	X	X	X	X	X	X	X	X	X	X	X	X	X
13	356092-451	TENSION INDICATOR WITH STUD	X	X	X	X	X	X	X	X	X	X	X	X	X	X	X	X	X	X	X	X	X
14	356090-XXX	TENSION INDICATOR DIAL	X	X	X	X	X	X	X	X	X	X	X	X	X	X	X	X	X	X	X	X	X
15	356245	TENSION MECHANISM SUPORT ASSEMBLY	X	X	X	X	X	X	X	X	X	X	X	X	X	X	X	X	X	X	X	X	X
16	445784	THREAD GUIDE (LOWER)	X	X	X	X	X	X	X	X	X	X	X	X	X	X	X	X	X	X	X	X	X
17	356094	TENSION DISC	X	X	X	X	X	X	X	X	X	X	X	X	X	X	X	X	X	X	X	X	X
18	356443	TENSION MECHANISM SHROUDER WASHER	X	X	X	X	X	X	X	X	X	X	X	X	X	X	X	X	X	X	X	X	X

NOTE: PLEASE WHEN NEED THE PART NUMBER(-----XXX), INDICATE THE MACHINE MODEL WHERE WILL BE USED..

BIGHT AMPLITUDE



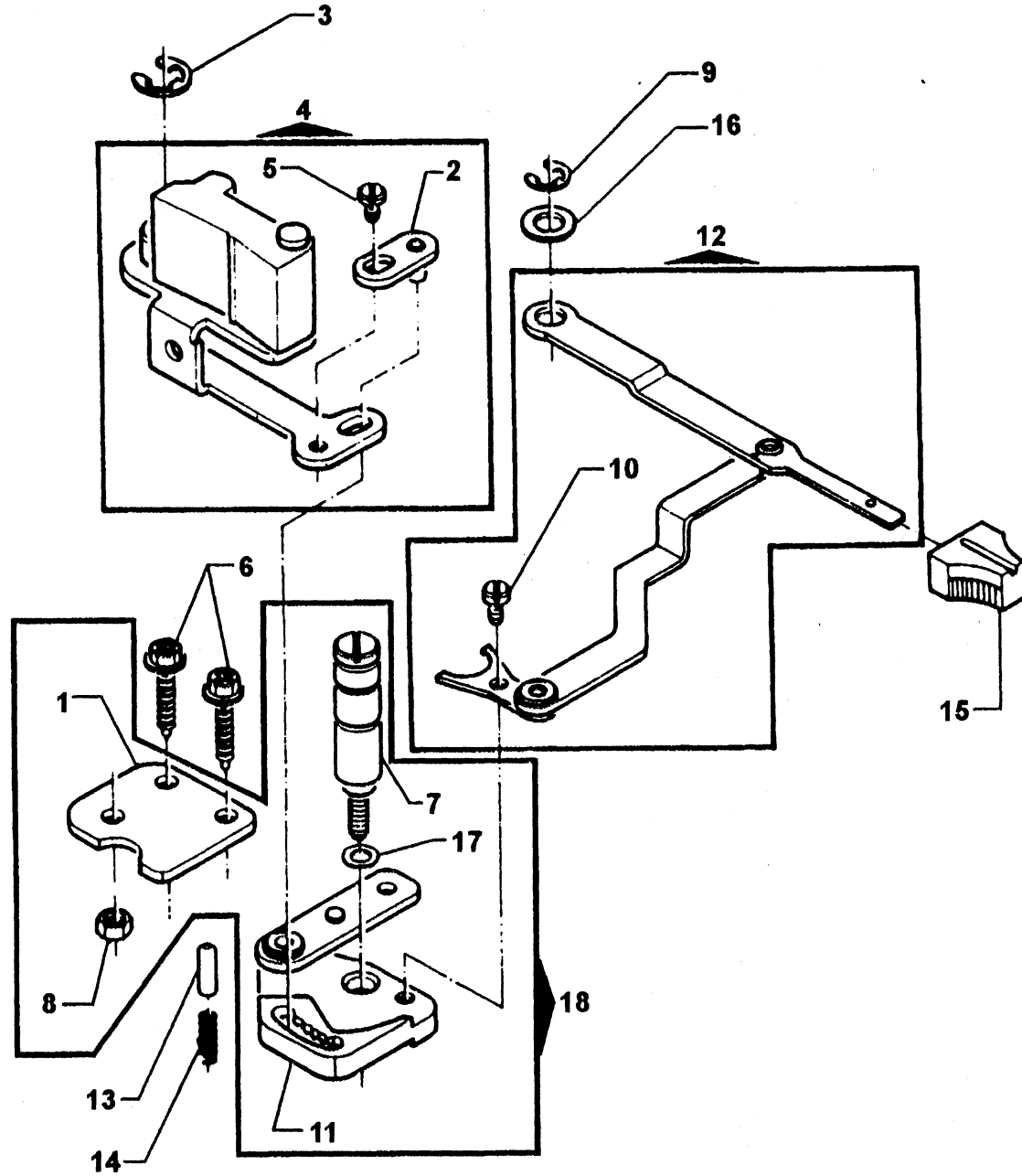
REV: _____
DATA: DEC/02

PARTS LIST

BIGHT AMPLITUDE

REF.	P/N	DESCRIPTION	9	9	9	5	C	9	9	9	9	9	9	5	9	9	9	5	9	9	9	5	5
			8	8	8	0	P	8	8	8	8	8	8	0	8	8	8	0	8	8	9	0	0
			0	0	0	1	1	0	0	1	1	1	1	2	1	2	2	4	3	3	3	5	6
			2	3	5	7	7	6	8	0	2	4	6	8	8	4	8	0	2	6	6	0	2
1	179893	BIGHT AMPLITUDE CONTROL LEVER MOUNTING BRACKET COMPLETE	-	-	X	X	X	X	X	X	X	X	X	X	X	X	X	X	X	X	X	X	X
1	446396	BIGHT AMPLITUDE CONTROL LEVER MOUNTING BRACKET COMPLETE	X	X	-	-	-	-	-	-	-	-	-	-	-	-	-	-	-	-	-	-	-
2	446342	BIGHT AMPLITUDE CONTROL LEVER SUB-ASSEMBLY	-	-	X	X	X	X	X	X	X	X	X	X	X	X	X	X	X	X	X	X	X
2	446395	BIGHT AMPLITUDE CONTROL LEVER SUB-ASSEMBLY	X	X	-	-	-	-	-	-	-	-	-	-	-	-	-	-	-	-	-	-	-
3	139866-451	BIGHT AMPLITUDE CONTROL LEVER SCREW	-	-	X	X	X	X	X	X	X	X	X	X	X	X	X	X	X	X	X	X	X
3	141913-451	BIGHT AMPLITUDE CONTROL LEVER SCREW	X	X	-	-	-	-	-	-	-	-	-	-	-	-	-	-	-	-	-	-	-
4	44556	BUTTONHOLER BIGHT CONTROL CAM FOLLOWER LEVER LINK (LEFT)	-	-	X	X	X	X	X	X	X	X	X	X	X	X	X	X	X	X	X	X	X
5	446394	BIGHT AMPLITUDE CONTROL LEVER	X	X	X	X	X	X	X	X	X	X	X	X	X	X	X	X	X	X	X	X	X
6	37246	BIGHT AMPLITUDE CONTROL LEVER LINK	X	X	X	X	X	X	X	X	X	X	X	X	X	X	X	X	X	X	X	X	X
7	354825-451	BIGHT AMPLITUDE CONTROL LEVER LINK HINGE SCREW	X	X	X	X	X	X	X	X	X	X	X	X	X	X	X	X	X	X	X	X	X
8	49204	BIGHT AMPLITUDE CONTROL LEVER LINK HINGE SCREW FRICTION WASHER	X	X	X	X	X	X	X	X	X	X	X	X	X	X	X	X	X	X	X	X	X
9	141913-451	BIGHT AMPLITUDE CONTROL LEVER LINK STOP SCREW	X	X	X	X	X	X	X	X	X	X	X	X	X	X	X	X	X	X	X	X	X
10	446904	BIGHT AMPLITUDE CONTROL LEVER LINK STOP	X	X	X	X	X	X	X	X	X	X	X	X	X	X	X	X	X	X	X	X	X
11	531793	BIGHT AMPLITUDE CONTROL LEVER MOUNTING BRACKET	X	X	X	X	X	X	X	X	X	X	X	X	X	X	X	X	X	X	X	X	X
12	54591-451	BIGHT AMPLITUDE CONTROL LEVER LINK HINGE SCREW NUT SCREW	X	X	X	X	X	X	X	X	X	X	X	X	X	X	X	X	X	X	X	X	X
13	113455-001	BIGHT AMPLITUDE CONTROL LEVER MOUNTING BRACKET	X	X	X	X	X	X	X	X	X	X	X	X	X	X	X	X	X	X	X	X	X
14	37933-002	NEEDLE BAR DRIVING ARM	X	X	X	X	X	X	X	X	X	X	X	X	X	X	X	X	X	X	X	X	X
15	37942	NEEDLE BAR DRIVING ARM TENSION SPRING	X	X	X	X	X	X	X	X	X	X	X	X	X	X	X	X	X	X	X	X	X
16	445780	LIGHT LEAD SHIELD & NEEDLE BAR DRIVING ARM TENSION SPRING MOUNTING PLATE	X	X	X	X	X	X	X	X	X	X	X	X	X	X	X	X	X	X	X	X	X
17	113455-001	LIGHT LEAD SHIELD & NEEDLE BAR DRIVING ARM TENSION SPRING MOUNTING PLATE SCREW	X	X	X	X	X	X	X	X	X	X	X	X	X	X	X	X	X	X	X	X	X
18	356961-451	BIGHT AMPLITUDE CONTROL LEVER KNOB (SNOW WHITE)	X	X	X	X	X	X	X	X	X	X	X	X	X	X	X	X	X	X	X	X	X

NEEDLE POSITION



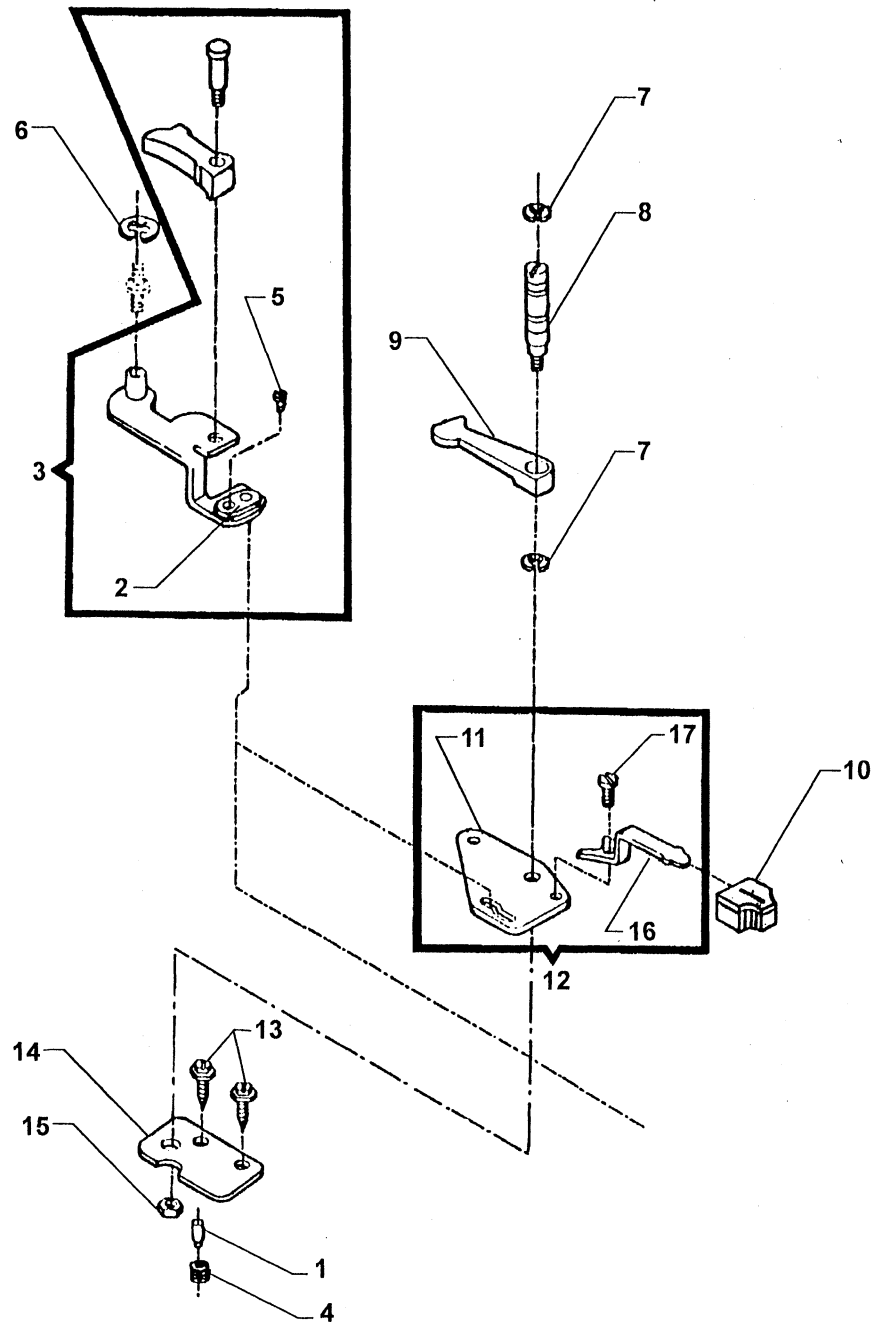
REV.: _____
DATA: DEC/02

PARTS LIST

NEEDLE POSITION

REF. ART NUMBE DESCRIPTION	9	9	9	5	C	9	9	9	9	9	9	5	9	9	9	5	9	9	9	5	5
	8	8	8	0	P	8	8	8	8	8	8	0	8	8	8	0	8	8	9	0	0
	0	0	0	1	1	0	0	1	1	1	1	2	1	2	2	4	3	3	3	5	6
	2	3	5	7	7	6	8	0	2	4	6	8	8	4	8	0	2	6	6	0	2
1 446401 NEEDLE POSITION SELECTOR LEVER ADJUSTING PLATE	X	X	X	X	X	X	X	X	X	X	X	X	X	X	X	X	X	X	X	X	X
2 531736 NEEDLE POSITION SELECTOR LEVER BRACKET FOLLOWER																					
STUD ARM ASSEMBLY	X	X	X	X	X	X	X	X	X	X	X	X	X	X	X	X	X	X	X	X	X
3 445721 NEEDLE BAR DRIVING ARM SLIDE BRACKET RETAINING RING	X	X	X	X	X	X	X	X	X	X	X	X	X	X	X	X	X	X	X	X	X
4 356735-001 NEEDLE BAR DRIVING ARM SLIDE BRACKET COMPLETE	-	-	X	X	X	X	X	X	X	X	X	X	X	X	X	X	X	X	X	X	X
5 141913-451 NEEDLE POSITION LEVER BRACKET STUD ARM SET SCREW	X	X	X	X	X	X	X	X	X	X	X	X	X	X	X	X	X	X	X	X	X
6 113455-001 NEEDLE POSITION SELECTOR LEVER ADJUSTING PLATE SCREW	X	X	X	X	X	X	X	X	X	X	X	X	X	X	X	X	X	X	X	X	X
7 357089 DISC FOLLOWER STUD	-	-	X	X	X	X	X	X	X	X	X	X	X	X	X	X	X	X	X	X	X
8 54591-451 NEEDLE POSITION SELECTOR LEVER ADJUSTING PLATE SCREW																					
NUT	X	X	X	X	X	X	X	X	X	X	X	X	X	X	X	X	X	X	X	X	X
9 445486 NEEDLE POSITION SELECTOR LEVER RETAINING RING	-	-	X	X	X	X	X	X	X	X	X	X	X	X	X	X	X	X	X	X	X
10 141913-451 NEEDLE POSITION SELECTOR LEVER SCREW	X	X	X	X	X	X	X	X	X	X	X	X	X	X	X	X	X	X	X	X	X
11 44628 NEEDLE POSITION SELECTOR LEVER BRACKET ASSEMBLY	-	-	X	X	X	X	X	X	X	X	X	X	X	X	X	X	X	X	X	X	X
12 356744 NEEDLE POSITION SELECTOR LEVER COMPLETE	-	-	X	X	X	X	X	X	X	X	X	X	X	X	X	X	X	X	X	X	X
13 356228 NEEDLE POSITION SELECTOR LEVER BRACKET POSITIONING	X	X	X	X	X	X	X	X	X	X	X	X	X	X	X	X	X	X	X	X	X
14 444800 NEEDLE POSITION SELECTOR LEVER BRACKET POSITIONING																					
PIN SPRING	X	X	X	X	X	X	X	X	X	X	X	X	X	X	X	X	X	X	X	X	X
15 356961-451 NEEDLE POSITION SELECTOR LEVER KNOB (PLASTIC)																					
(SNOW WHITE)	X	X	X	X	X	X	X	X	X	X	X	X	X	X	X	X	X	X	X	X	X
16 49204 NEEDLE POSITION SELECTOR LEVER HINGE STUD WASHER	-	-	X	X	X	X	X	X	X	X	X	X	X	X	X	X	X	X	X	X	X
17 353585 DISC FOLLOWER STUD COLLAR	-	-	X	X	X	X	X	X	X	X	X	X	X	X	X	X	X	X	X	X	X
18 356838 NEEDLE POSITION SELECTOR LEVER BRACKET COMPLETE	-	-	X	X	X	X	X	X	X	X	X	X	X	X	X	X	X	X	X	X	X

NEEDLE POSITION



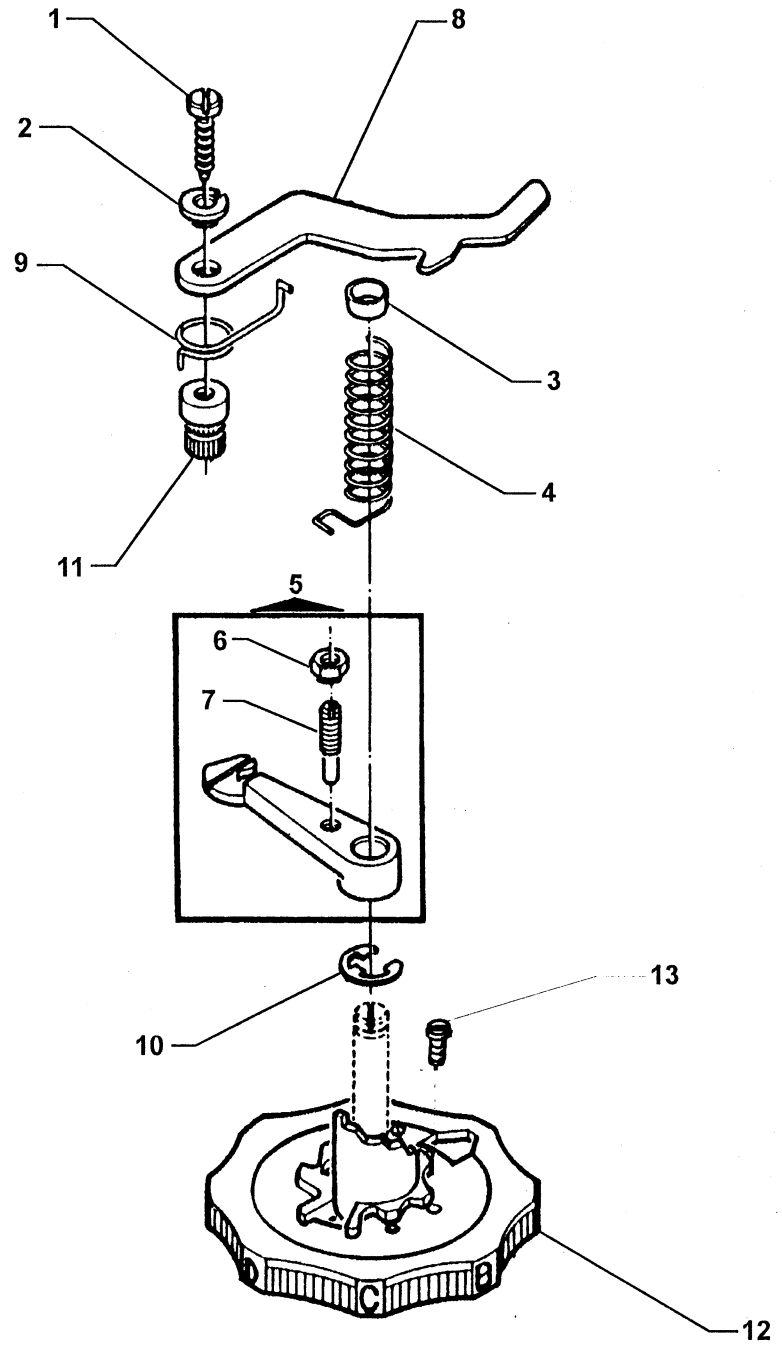
REV: _____
DATA: DEC/02

PARTS LIST

NEEDLE POSITION

REF. ART NUMBE DESCRIPTION	9	9	9	5	C	9	9	9	9	9	9	5	9	9	9	5	9	9	9	5	5
	8	8	8	0	P	8	8	8	8	8	8	0	8	8	8	0	8	8	9	0	0
	0	0	0	1	1	0	0	1	1	1	1	2	1	2	2	4	3	3	3	5	6
	2	3	5	7	7	6	8	0	2	4	6	8	8	4	8	0	2	6	6	0	2
1 356228 NEEDLE POSITION SELECTOR LEVER BRACKET POSITIONING FX	X	X	X	X	X	X	X	X	X	X	X	X	X	X	X	X	X	X	X	X	X
2 531736 NEEDLE POSITION SELECTOR BRACKET FOLLOWER STUD ARM ASSEMBLY	X	X	X	X	X	X	X	X	X	X	X	X	X	X	X	X	X	X	X	X	X
3 356636 NEEDLE BAR DRIVING ARM SLIDE BRACKET COMPLETE	X	X	-	-	-	-	-	-	-	-	-	-	-	-	-	-	-	-	-	-	-
4 444800 NEEDLE POSITION SELECTOR LEVER BRACKET POSITIONING PIN SPRING	X	X	X	X	X	X	X	X	X	X	X	X	X	X	X	X	X	X	X	X	X
5 141913-451 NEEDLE POSITION LEVER BRACKET STUD ARM SET SCREW	X	X	X	X	X	X	X	X	X	X	X	X	X	X	X	X	X	X	X	X	X
6 445721 NEEDLE BAR DRIVING ARM SLIDE BRACKET RETAINING RING	X	X	X	X	X	X	X	X	X	X	X	X	X	X	X	X	X	X	X	X	X
7 44371 DISC FOLLOWER STUD RETAINING(UPPER & LOWER)	X	X	-	-	-	-	-	-	-	-	-	-	-	-	-	-	-	-	-	-	-
8 446023 DISC FOLLOWER STUD	X	X	-	-	-	-	-	-	-	-	-	-	-	-	-	-	-	-	-	-	-
9 445646 DISC FOLLOWER	X	X	-	-	-	-	-	-	-	-	-	-	-	-	-	-	-	-	-	-	-
10 356961-451 NEEDLE POSITION SELECTOR LEVER KNOB (PLASTIC) (SNOW WHITE)	X	X	X	X	X	X	X	X	X	X	X	X	X	X	X	X	X	X	X	X	X
11 353547 NEEDLE POSITION SELECTOR LEVER BRACKET	X	X	-	-	-	-	-	-	-	-	-	-	-	-	-	-	-	-	-	-	-
12 446399 NEEDLE POSITION SELECTOR LEVER ASSEMBLY	X	X	-	-	-	-	-	-	-	-	-	-	-	-	-	-	-	-	-	-	-
13 113455-001 NEEDLE POSITION SELECTOR LEVER MOUNTING PLATE SCREW	X	X	X	X	X	X	X	X	X	X	X	X	X	X	X	X	X	X	X	X	X
14 446401 NEEDLE POSITION SELECTOR LEVER MOUNTING PLATE	X	X	X	X	X	X	X	X	X	X	X	X	X	X	X	X	X	X	X	X	X
15 54591-451 DISC FOLLOWER STUD NUT	X	X	X	X	X	X	X	X	X	X	X	X	X	X	X	X	X	X	X	X	X
16 446397 NEEDLE POSITION SELECTOR LEVER	X	X	-	-	-	-	-	-	-	-	-	-	-	-	-	-	-	-	-	-	-
17 141913-451 NEEDLE POSITION SELECTOR LEVER SCREW	X	X	X	X	X	X	X	X	X	X	X	X	X	X	X	X	X	X	X	X	X

PATTERN SELECTOR



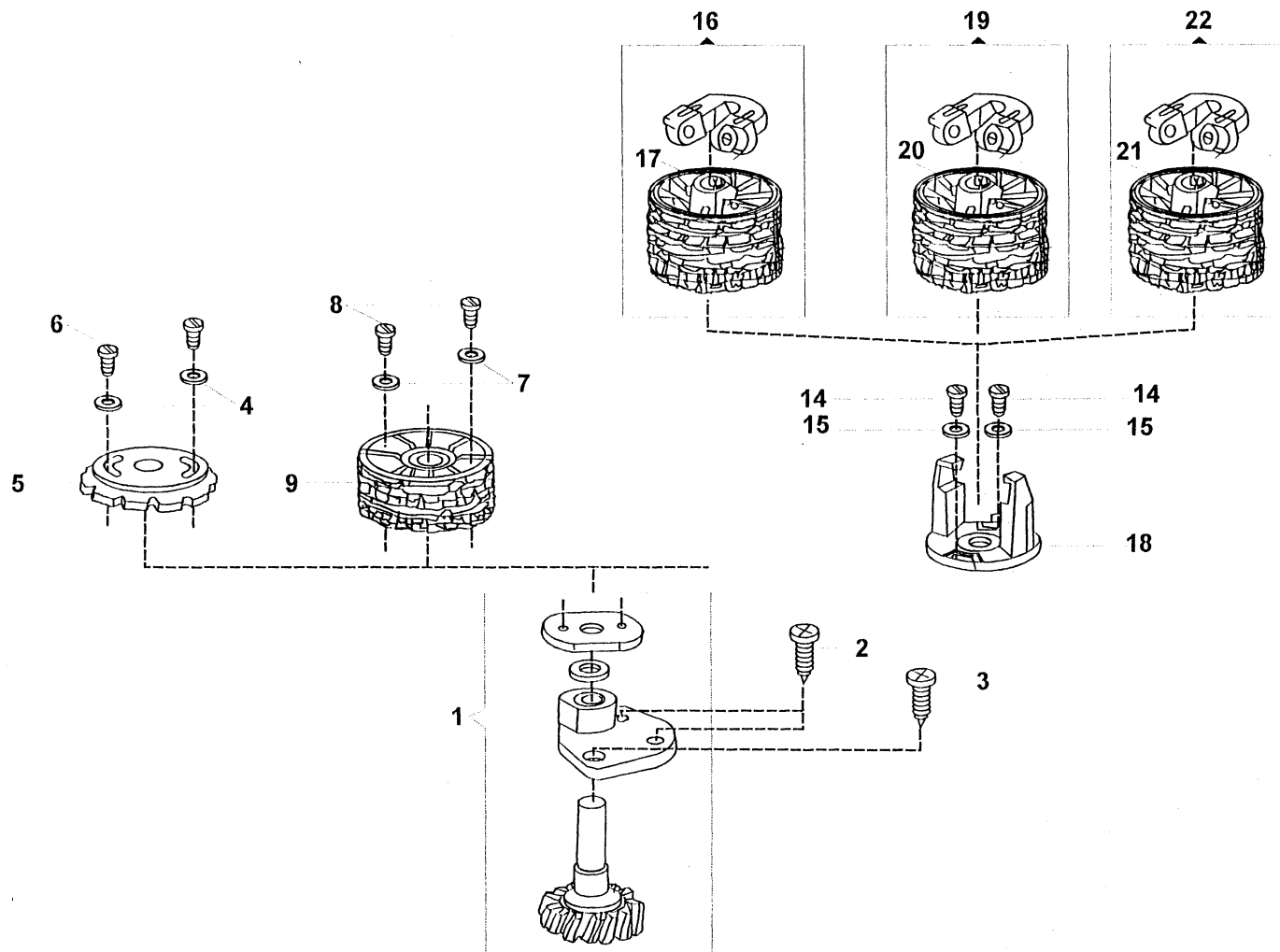
REV: _____
DATA: DEC/02

PARTS LIST

PATTERN SELECTOR

REF.	P/N	DESCRIPTION	9	9	9	5	C	9	9	9	9	9	9	5	9	9	9	5	9	9	9	5	5
			8	8	8	0	P	8	8	8	8	8	8	0	8	8	8	0	8	8	9	0	0
			0	0	0	1	1	0	0	1	1	1	1	2	1	2	2	4	3	3	3	5	6
			2	3	5	7	7	6	8	0	2	4	6	8	8	4	8	0	2	6	6	0	2
1	354826-451	DISC FOLLOWER DISENGAGING LEVER SCREW	-	-	X	X	X	X	X	X	X	X	X	X	X	X	X	X	X	X	X	X	X
2	356751	DISC FOLLOWER DISENGAGING LEVER BUSHING	-	-	X	X	X	X	X	X	X	X	X	X	X	X	X	X	X	X	X	X	X
3	353548	DISC FOLLOWER STUD WASHER	-	X	X	X	X	X	X	X	X	X	X	X	X	X	X	X	X	X	X	X	X
4	356768	DISC FOLLOWER SPRING	-	-	X	X	X	X	X	X	X	X	X	X	X	X	X	X	X	X	X	X	X
5	356770	DISC FOLLOWER COMPLETE	-	-	X	X	X	X	X	X	X	X	X	X	X	X	X	X	X	X	X	X	X
6	531699-451	DISC FOLLOWER ADJUSTING SCREW STUD NUT	-	-	X	X	X	X	X	X	X	X	X	X	X	X	X	X	X	X	X	X	X
7	445341	DISC FOLLOWER ADJUSTING SCREW STUD	-	-	X	X	X	X	X	X	X	X	X	X	X	X	X	X	X	X	X	X	X
8	356750	DISC FOLLOWER DISENGAGING LEVER	-	-	X	X	X	X	X	X	X	X	X	X	X	X	X	X	X	X	X	X	X
9	356752	DISC FOLLOWER DISENGAGING LEVER SPRING	-	-	X	X	X	X	X	X	X	X	X	X	X	X	X	X	X	X	X	X	X
10	603908-001	DISC SELECTOR CAM RETAINING RING	-	-	X	X	X	X	X	X	X	X	X	X	X	X	X	X	X	X	X	X	X
11	357000	DISC FOLLOWER DISENGAGING LEVER STUD	-	-	X	X	X	X	X	X	X	X	X	X	X	X	X	X	X	X	X	X	X
12	356749-454	PATTERN SELECTOR CAM/DIAL (SNOW WHITE) FOR 9818/9836 /-	-	-	-	-	-	-	-	-	-	-	-	X	-	-	-	-	X	X	X	X	
12	356749-455	PATTERN SELECTOR CAM/DIAL (SNOW WHITE) FOR 9816/983 2-	-	-	-	-	-	-	-	-	-	X	X	-	-	-	-	X	-	-	-	-	
12	356749-456	PATTERN SELECTOR CAM/DIAL (SNOW WHITE) FOR 9814/982 8-	-	-	-	-	-	-	-	-	X	-	-	-	-	X	X	-	-	-	-	-	
12	356749-457	PATTERN SELECTOR CAM/DIAL (SNOW WHITE) FOR 9812/982 4-	-	-	-	-	-	-	-	X	-	-	-	-	X	-	-	-	-	-	-	-	
12	356749-458	PATTERN SELECTOR CAM/DIAL (SNOW WHITE) FOR 9805/9810	-	-	X	X	X	-	-	X	-	-	-	-	-	-	-	-	-	-	-	-	
12	356749-459	PATTERN SELECTOR CAM/DIAL (SNOW WHITE) FOR 9808	-	-	-	-	-	-	X	-	-	-	-	-	-	-	-	-	-	-	-	-	
12	356749-460	PATTERN SELECTOR CAM/DIAL (SNOW WHITE) FOR 9806	-	-	-	-	-	X	-	-	-	-	-	-	-	-	-	-	-	-	-	-	
13	355247-451	PATTERN SELECTOR CAM POSITIONER SCREW	-	-	X	X	X	X	X	X	X	X	X	-	X	X	X	X	-	-	-	-	

CAM STACK



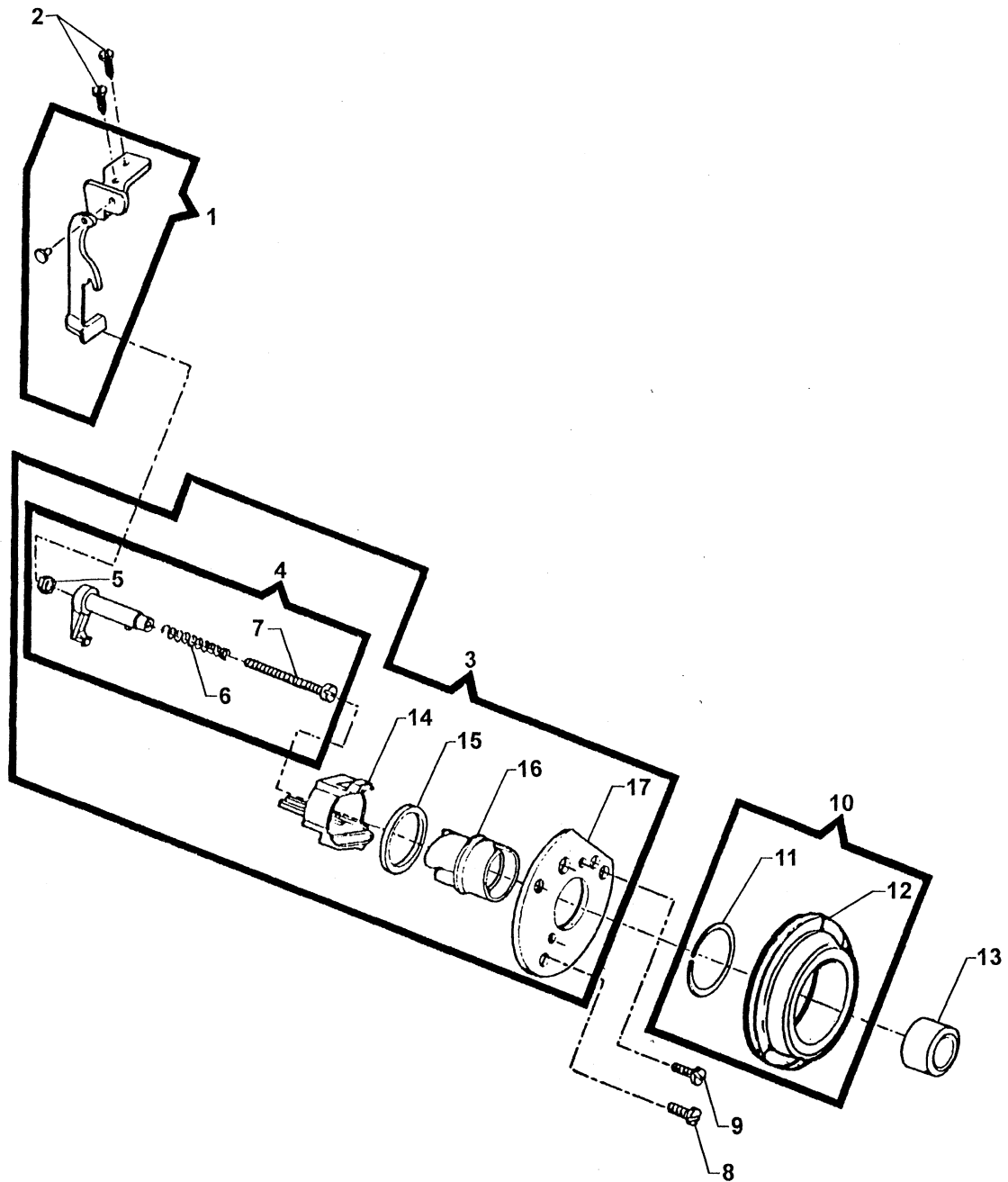
REV: _____
DATA: DEC/02

PARTS LIST

CAM STACK

REF.	P/N	DESCRIPTION	9	9	9	5	C	9	9	9	9	9	9	5	9	9	9	5	9	9	9	5	5
			8	8	8	0	P	8	8	8	8	8	8	0	8	8	8	0	8	8	9	0	0
			0	0	0	1	1	0	0	1	1	1	1	2	1	2	2	4	3	3	3	5	6
			2	3	5	7	7	6	8	0	2	4	6	8	8	4	8	0	2	6	6	0	2
1	356982	DISC DRIVING GEAR SHAFT MOUNTING PLATE ASSEMBLY	X	X	X	X	X	X	X	X	X	X	X	X	X	X	X	X	X	X	X	X	X
2	113455-012	DISC DRIVING GEAR SHAFT MOUNTING PLATE SCREW	X	X	X	X	X	X	X	X	X	X	X	X	X	X	X	X	X	X	X	X	X
3	113455-012	DISC DRIVING GEAR SHAFT MOUNTING PLATE SCREW	X	X	X	X	X	X	X	X	X	X	X	X	X	X	X	X	X	X	X	X	X
4	356830-003	DISC STACK POSITIONING SCREW WASHER	X	X	X	X	X	X	X	X	X	X	X	X	X	X	X	X	X	X	X	X	X
5	356999	DISC STACK (PLASTIC)	X	X	-	-	-	-	-	-	-	-	-	-	-	-	-	-	-	-	-	-	-
7	356830-003	DISC STACK POSITIONING SCREW WASHER	X	X	X	X	X	X	X	X	X	X	X	X	X	X	X	X	X	X	X	X	X
8	141920-451	DISC STACK POSITIONING SCREW	X	X	X	X	X	X	X	X	X	X	X	X	X	X	X	X	X	X	X	X	X
9	356995	DISC STACK (PLASTIC)	-	-	X	X	X	X	X	X	-	-	-	-	-	-	-	-	-	-	-	-	-
14	141920-451	DISC STACK PLATE SCREW	X	X	X	X	X	X	X	X	X	X	X	X	X	X	X	X	X	X	X	X	X
15	356830-003	DISC STACK PLATE SCREW WASHER	X	X	X	X	X	X	X	X	X	X	X	X	X	X	X	X	X	X	X	X	X
16	357016	DISC STACK ASSEMBLY	-	-	-	-	-	-	-	-	X	X	X	X	X	X	X	X	X	X	X	X	X
17	356969	DISC STACK (PLASTIC)	-	-	-	-	-	-	-	-	X	X	X	X	X	X	X	X	X	X	X	X	X
18	356971-451	DISC DRIVING PLATE	-	-	-	-	-	-	-	-	X	X	X	X	X	X	X	X	X	X	X	X	X
19	357021-451	DISCK STACK ASSEMBLY (ACCESSORIES)	-	-	-	-	-	-	-	-	-	-	-	-	-	X	X	X	X	X	X	X	X
20	356970	DISC STACK (PLASTIC) (ACCESSORIES)	-	-	-	-	-	-	-	-	-	-	-	-	-	X	X	X	X	X	X	X	X
21	358157-451	DISC STACK (PLASTIC)	-	-	-	-	-	-	-	-	-	-	-	-	-	-	-	-	-	-	-	-	X
22	358158-451	DISC STACK ASSEMBLY	-	-	-	-	-	-	-	-	-	-	-	-	-	-	-	-	-	-	-	-	X

FEED REGULATOR CAM



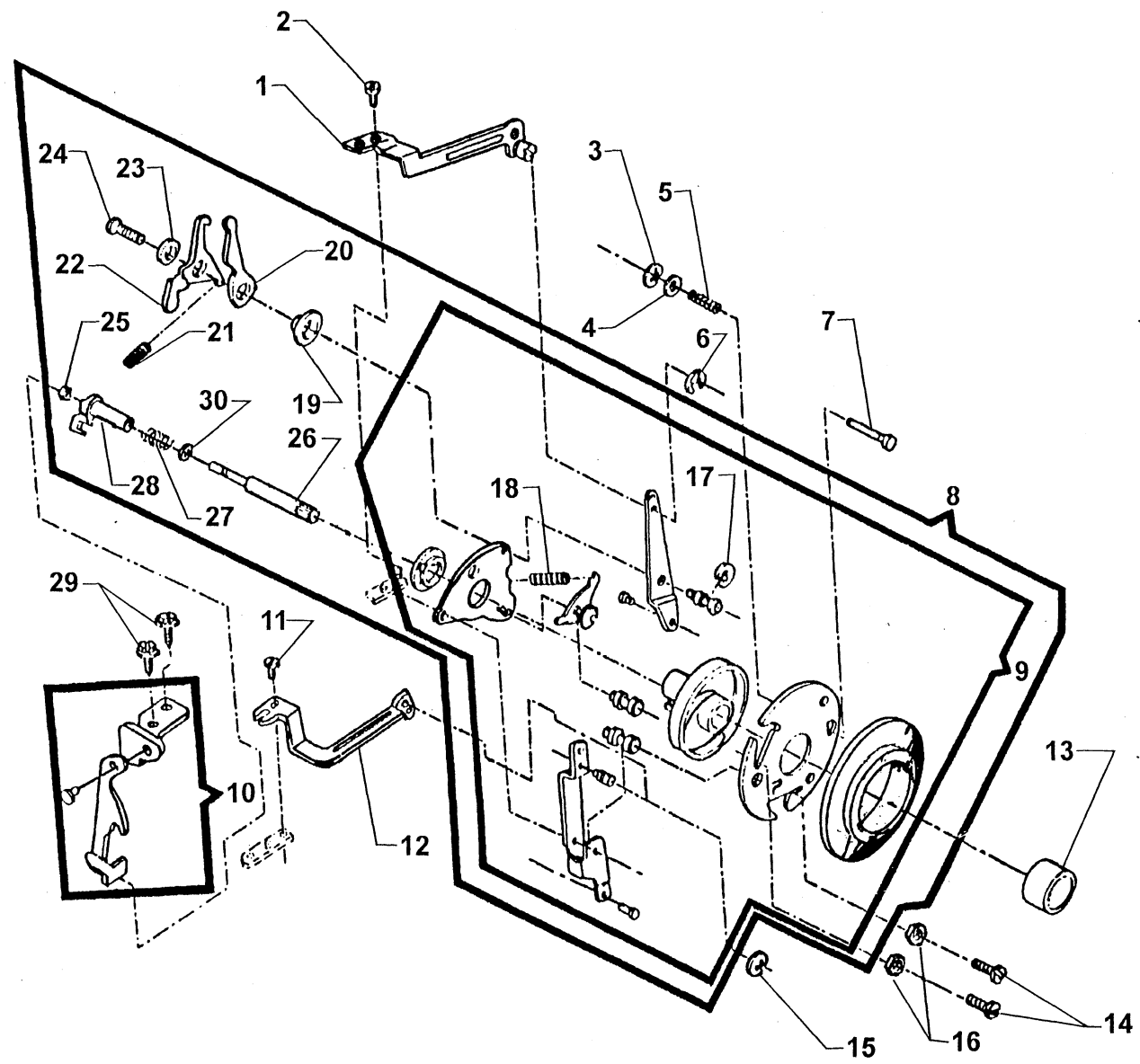
REV.: _____
DATA: DEC/02

PARTS LIST

FEED REGULATOR CAM

REF.	P/N	DESCRIPTION	9	9	9	5	C	9	9	9	9	9	9	5	9	9	9	5	9	9	9	5	5
			8	8	8	0	P	8	8	8	8	8	8	0	8	8	8	0	8	8	9	0	0
			0	0	0	1	1	0	0	1	1	1	1	2	1	2	2	4	3	3	3	5	6
			2	3	5	7	7	6	8	0	2	4	6	8	8	4	8	0	2	6	6	0	2
1	353304	FEED REGULATOR CONTROL ARM ASSEMBLY	X	X	X	X	X	X	X	X	X	X	X	X	X	X	X	X	X	X	X	X	X
2	113455-001	FEED REGULATOR CONTROL ARM MOUNTING BRACKET SCREW	X	X	X	X	X	X	X	X	X	X	X	X	X	X	X	X	X	X	X	X	X
3	353478	FEED REGULATOR CAM COMPLETE	X	X	-	-	-	-	-	-	-	-	-	-	-	-	-	-	-	-	-	-	-
4	356397	FEED REGULATOR CAM FOLLOWER	X	X	-	-	-	-	-	-	-	-	-	-	-	-	-	-	-	-	-	-	-
5	618638-005	FEED REGULATOR CAM FOLLOWER POSITIONING SPRING NUT	X	X	X	X	X	X	X	X	X	X	X	X	X	X	X	X	X	X	X	X	X
6	44892	FEED REGULATOR CAM FOLLOWER POSITIONING SPRING	X	X	X	X	X	X	X	X	X	X	X	X	X	X	X	X	X	X	X	X	X
7	354975-451	FEED REGULATOR CAM FOLLOWER POSITIONING SCREW	X	X	-	-	-	-	-	-	-	-	-	-	-	-	-	-	-	-	-	-	-
8	531806-451	FEED REGULATOR MOUNTING PLATE SCREW (RIGHT)	X	X	-	-	-	-	-	-	-	-	-	-	-	-	-	-	-	-	-	-	-
9	531807-451	FEED REGULATOR MOUNTING PLATE SCREW (LEFT)	X	X	-	-	-	-	-	-	-	-	-	-	-	-	-	-	-	-	-	-	-
10	356998-451	FEED REGULATOR CONTROL DIAL ASSEMBLY	X	X	-	-	-	-	-	-	-	-	-	-	-	-	-	-	-	-	-	-	-
11	445461	FEED REGULATOR CONTROL DIAL RETAINING RING	X	X	-	-	-	-	-	-	-	-	-	-	-	-	-	-	-	-	-	-	-
12	356997-451	FEED REGULATOR CONTROL DIAL	X	X	-	-	-	-	-	-	-	-	-	-	-	-	-	-	-	-	-	-	-
13	356115-452	FEED REGULATOR POSITIONING PIN KNOB	X	X	-	-	-	-	-	-	-	-	-	-	-	-	-	-	-	-	-	-	-
14	446284	FEED REGULATOR MOUNTING PLATE	X	X	-	-	-	-	-	-	-	-	-	-	-	-	-	-	-	-	-	-	-
15	446282	FEED REGULATOR FRICTION WASHER	X	X	-	-	-	-	-	-	-	-	-	-	-	-	-	-	-	-	-	-	-
16	353477	FEED REGULATOR CAM	X	X	-	-	-	-	-	-	-	-	-	-	-	-	-	-	-	-	-	-	-
17	446283	FEED REGULATOR MECHANISM MOUNTING PLATE	X	X	-	-	-	-	-	-	-	-	-	-	-	-	-	-	-	-	-	-	-

BUTTONHOLER & FEED REGULATOR CAM



REV: _____
DATA: DEC/02

PARTS LIST

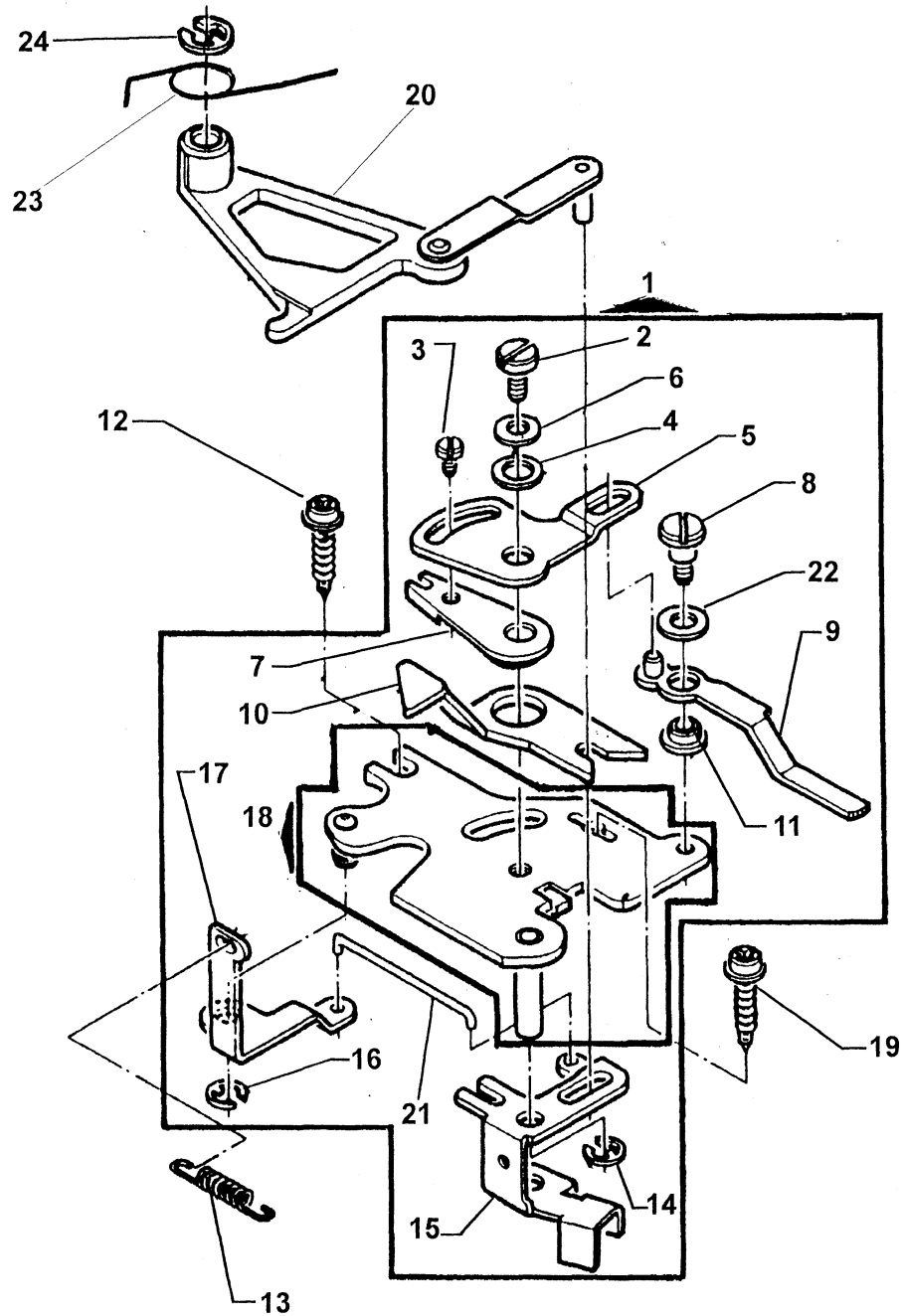
BUTTONHOLER AND FEED REGULATOR CAM

REF.	P/N	DESCRIPTION	9	9	9	5	C	9	9	9	9	9	9	5	9	9	9	5	9	9	9	5	5
			8	8	8	0	P	8	8	8	8	8	8	0	8	8	8	0	8	8	9	0	0
			0	0	0	1	1	0	0	1	1	1	1	2	1	2	2	4	3	3	3	5	6
			2	3	5	7	7	6	8	0	2	4	6	8	8	4	8	0	2	6	6	0	2
1	353536	BH.NEEDLE POSITION CAM FOLLOWER LEVER LINK (RIGHT)	-	-	X	X	X	X	X	X	X	X	X	X	X	X	X	X	X	X	X	X	X
2	141913-451	BH.ND.POS.CAM FOLLOWER LEVER LINK (LEFT & RIGHT) SCREW	-	-	X	X	X	X	X	X	X	X	X	X	X	X	X	X	X	X	X	X	X
3	408030	BH.& FEED REGULATOR MECHANISM MTG.PLATE STUD RET.RING	-	-	X	X	X	X	X	X	X	X	X	X	X	X	X	X	X	X	X	X	X
4	445808	BH.& FEED REG.MECH.MTG.PLATE STUD SPRING WASHER	-	-	X	X	X	X	X	X	X	X	X	X	X	X	X	X	X	X	X	X	X
5	179949	BUTTONHOLER & FEED REG.MECH.MTG.PLATE STUD SPRING	-	-	X	X	X	X	X	X	X	X	X	X	X	X	X	X	X	X	X	X	X
6	445486	BH.BIGHT CONTROL CAM FOL.LEVER LINK (RIGHT) RET.RING	-	-	X	X	X	X	X	X	X	X	X	X	X	X	X	X	X	X	X	X	X
7	356230	BUTTONHOLER & FEED REGULATOR MECH.MTG.PLATE STUD	-	-	X	X	X	X	X	X	X	X	X	X	X	X	X	X	X	X	X	X	X
8	357010-XXX	BUTTONHOLER & FEED REGULATOR CAM COMPLETE	-	-	-	-	X	X	X	X	X	X	X	X	X	X	X	X	X	X	X	X	X
8	357012-XXX	BUTTONHOLER & FEED REGULATOR CAM COMPLETE	X	X	X	X	-	-	-	-	-	-	-	-	-	-	-	-	-	-	-	-	-
9	357011-XXX	BUTTONHOLER & FEED REGULATOR CAM ASSEMBLY	-	-	-	-	X	X	X	X	X	X	-	X	X	X	-	X	X	X	X	X	X
9	357013-XXX	BUTTONHOLER & FEED REGULATOR CAM ASSEMBLY	X	X	X	X	-	-	-	-	-	-	-	-	-	-	-	-	-	-	-	-	-
10	353304	FEED REGULATOR CONTROL ARM ASSEMBLY	X	X	X	X	X	X	X	X	X	X	X	X	X	X	X	X	X	X	X	X	X
11	141913-451	BUT. BIGHT CONT. CAM FOL. LEVER LINK(LEFT & RIGHT)SCREW	-	-	X	X	X	X	X	X	X	X	X	X	X	X	X	X	X	X	X	X	X
12	356748	BH.BIGHT CONTROL CAM FOLLOWER LEVER LINK (RIGHT)	-	-	X	X	X	X	X	X	X	X	X	X	X	X	X	X	X	X	X	X	X
13	356653-455	FEED REGULATOR POSITIONING PIN KNOB	-	-	X	X	X	X	X	X	X	X	X	X	X	X	X	X	X	X	X	X	X
14	113513-451	BUTTONHOLER & FEED REGULATOR MECH.MTG.PLATE SCREW	-	-	X	X	X	X	X	X	X	X	X	X	X	X	X	X	X	X	X	X	X
15	445486	BH.RIGHT CONTROL CAM FOL.LEVER LINK (RIGHT) RET.RING	-	-	X	X	X	X	X	X	X	X	X	X	X	X	X	X	X	X	X	X	X
16	53640-819	BUTTONHOLER & FEED REG.MECH.MTG.PLATE SCREW NUT	-	-	X	X	X	X	X	X	X	X	X	X	X	X	X	X	X	X	X	X	X
17	353215	BUTTONHOLER NEEDLE POS.CAM FOLLOWER LEVER RET.RING	-	-	X	X	X	X	X	X	X	X	X	X	X	X	X	X	X	X	X	X	X
18	353495	BUTTONHOLER & FEED REG.CONTROL DIAL PAWL SPRING	-	-	X	X	X	X	X	X	X	X	X	X	X	X	X	X	X	X	X	X	X
19	353319	CAM CONTROL FEED ENG.CAM FOLLOWER & LEVER BUSHING	-	-	-	-	X	X	X	X	X	X	-	X	X	-	X	X	X	X	X	X	X
20	353321	CAM CONTROL FEED ENGAGING CAM FOLLOWER LEVER	-	-	-	-	X	X	X	X	X	X	-	X	X	-	X	X	X	X	X	X	X
21	353495	CAM CONTROL FEED ENG.CAM FOLLOWER & LEVER SPRING	-	-	-	-	X	X	X	X	X	X	-	X	X	-	X	X	X	X	X	X	X
22	353320	CAM CONTROL FEED ENGAGING CAM FOLLOWER	-	-	-	-	X	X	X	X	X	X	-	X	X	-	X	X	X	X	X	X	X
23	445539	CAM CONTROL FEED ENG.CAM FOLLOWER & LEVER WASHER	-	-	-	-	X	X	X	X	X	X	-	X	X	-	X	X	X	X	X	X	X
24	113372-451	CAM CONTROL FD.ENG.CAM FOLLOWER & LEVER MTG.SCREW	-	-	-	-	X	X	X	X	X	X	-	X	X	-	X	X	X	X	X	X	X
25	618638-005	FEED REGULATOR POSITIONING PIN CARRIER INSERT NUT	X	X	X	X	X	X	X	X	X	X	X	X	X	X	X	X	X	X	X	X	X
26	356650	FEED REGULATOR POSITIONING PIN	-	-	X	X	X	X	X	X	X	X	X	X	X	X	X	X	X	X	X	X	X
27	44892	FEED REGULATOR POSITIONING PIN FRICTION SPRING	X	X	X	X	X	X	X	X	X	X	X	X	X	X	X	X	X	X	X	X	X
28	357094	FEED REGULATOR POSITIONING PIN CARRIER	-	-	X	X	X	X	X	X	X	X	X	X	X	X	X	X	X	X	X	X	X
29	113455-001	FEED REGULATOR CONTROL ARM SCREW	X	X	X	X	X	X	X	X	X	X	X	X	X	X	X	X	X	X	X	X	X
30	356830-001	FEED REGULATOR POSITIONING PIN WASHER	-	-	X	X	X	X	X	X	X	X	X	X	X	X	X	X	X	X	X	X	X

9800/5017/5028/5040/5050/CP-17/5062
P/N 357669-001

Adopt.
DEC, 1998

CAM CONTROLLED FEED



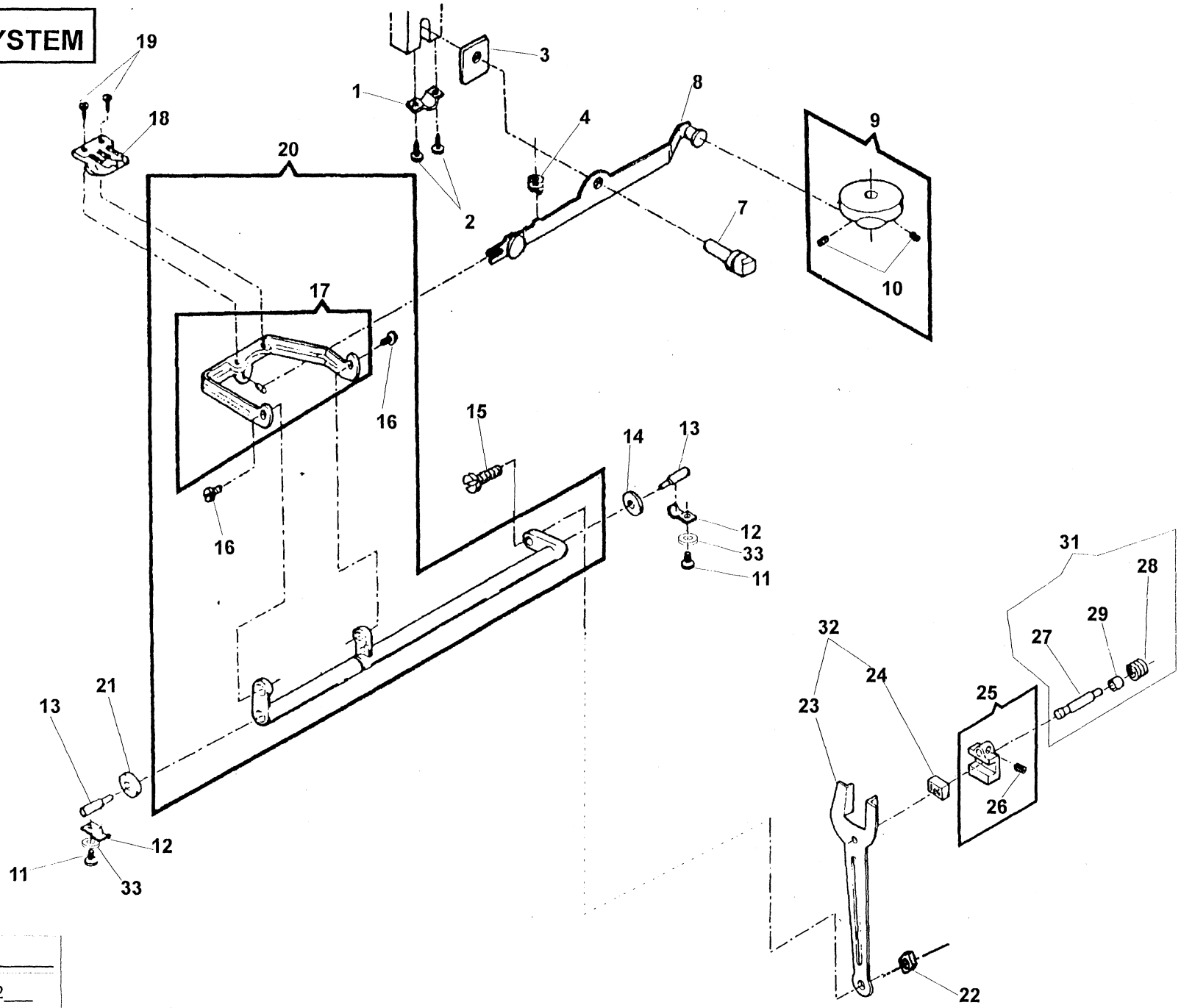
REV: _____
DATA: DEC/02

PARTS LIST

CAM CONTROLLED FEED

REF. P/N	DESCRIPTION	9	9	9	5	C	9	9	9	9	9	9	5	9	9	9	5	9	9	9	5	5
		8	8	8	0	P	8	8	8	8	8	8	0	8	8	8	0	8	8	9	0	0
		0	0	0	1	1	0	0	1	1	1	1	2	1	2	2	4	3	3	3	5	6
		2	3	5	7	7	6	8	0	2	4	6	8	8	4	8	0	2	6	6	0	2
1	531749-001 CAM CONTROLLED FEED MOUNTING BRACKET COMPLETE	-	-	-	-	-	X	X	X	X	X	X	-	X	X	X	-	X	X	X	X	X
2	113423-451 CAM CONTROLLED FEED BALANCE ADJUSTING PLATE HINGE SCREW	-	-	-	-	-	X	X	X	X	X	X	-	X	X	X	-	X	X	X	X	X
3	141913-451 CAM CONTROLLED FEED BALANCE ADJUSTING SCREW	-	-	-	-	-	X	X	X	X	X	X	-	X	X	X	-	X	X	X	X	X
4	353492 CAM CONTROLLED FEED BALANCE ADJUSTING SCREW SPRING WASHER	-	-	-	-	-	X	X	X	X	X	X	-	X	X	X	-	X	X	X	X	X
5	531754 CAM CONTROLLED FEED BALANCE ADJUSTING PLATE	-	-	-	-	-	X	X	X	X	X	X	-	X	X	X	-	X	X	X	X	X
6	543531 CAM CONTROLLEDD FEED BALANCE ADJUSTING SCREW WASHER	-	-	-	-	-	X	X	X	X	X	X	-	X	X	X	-	X	X	X	X	X
7	353331 CAM CONTROLLED FEED DRIVING ARM ECCENTRIC	-	-	-	-	-	X	X	X	X	X	X	-	X	X	X	-	X	X	X	X	X
8	113424-451 CAM CONTROLLED FEED BALANCE ADJUSTING LEVER HINGE SCREW	-	-	-	-	-	X	X	X	X	X	X	-	X	X	X	-	X	X	X	X	X
9	531752-453 CAM CONTROLLED FEED BALANCE ADJUSTING LEVER ASSEMBLY	-	-	-	-	-	X	X	X	X	X	X	-	X	X	X	-	X	X	X	X	X
10	353330-001 CAM CONTROLLED FEED DRIVING ARM	-	-	-	-	-	X	X	X	X	X	X	-	X	X	X	-	X	X	X	X	X
11	353334 CAM CONTROLLED FEED BALANCE ADJUSTING LEVER MOUNTING BUSHING	-	-	-	-	-	X	X	X	X	X	X	X	X	X	X	X	X	X	X	X	X
12	355243-451 CAM CONTROLLED FEED MOUNTING BRACKET SCREW	-	-	-	-	-	X	X	X	X	X	X	X	X	X	X	X	X	X	X	X	X
13	356605 FEED REGULATOR CONTROL ARM BIAS LINK SPRING	-	-	-	-	-	X	X	X	X	X	X	X	X	X	X	X	X	X	X	X	X
14	445721 CAM CONTROLLED FEED ENGAGING CRANK RETAINING RING	-	-	-	-	-	X	X	X	X	X	X	X	X	X	X	X	X	X	X	X	X
15	353329 CAM CONTROLLED FEED ENGAGING CRANK	-	-	-	-	-	X	X	X	X	X	X	X	X	X	X	X	X	X	X	X	X
16	445486 CAM CONTROLLED FEED FOLLOWER & LINK RETAINING RING	-	-	-	-	-	X	X	X	X	X	X	X	X	X	X	X	X	X	X	X	X
17	356166 CAM CONTROLLED FEED ENGAGING CRANK LEVER	-	-	-	-	-	X	X	X	X	X	X	X	X	X	X	X	X	X	X	X	X
18	531750 CAM CONTROLLED FEED MOUNTING BRACKET ASSEMBLY	-	-	-	-	-	X	X	X	X	X	X	X	X	X	X	X	X	X	X	X	X
19	113455-003 CAM CONTROLLED FEED MOUNTING BRACKET SCREW (RIGHT)	-	-	-	-	-	X	X	X	X	X	X	X	X	X	X	X	X	X	X	X	X
20	356839 CAM CONTROLLED FEED FOLLOWER & LINK ASSEMBLY	-	-	-	-	-	X	X	X	X	X	X	X	X	X	X	X	X	X	X	X	X
21	353473 CAM CONTROLLED FEED ENGAGING CRANK LINK	-	-	-	-	-	X	X	X	X	X	X	X	X	X	X	X	X	X	X	X	X
22	179898-001 CAM CONTROLLED FEED BALANCE ADJUSTING LEVER WASHER	-	-	-	-	-	X	X	X	X	X	X	X	X	X	X	X	X	X	X	X	X
23	357003 CAM CONTROLLED FEED FOLLOWER DISENGAGING SPRING	-	-	-	-	-	-	-	-	-	-	-	-	-	X	X	X	X	X	X	X	X
24	445486 CAM CONTROLLED FEED FOLLOWER & LINK ASSEMBLY RETAINING RING	-	-	-	-	-	X	X	X	X	X	X	X	X	X	X	X	X	X	X	X	X

FEED SYSTEM



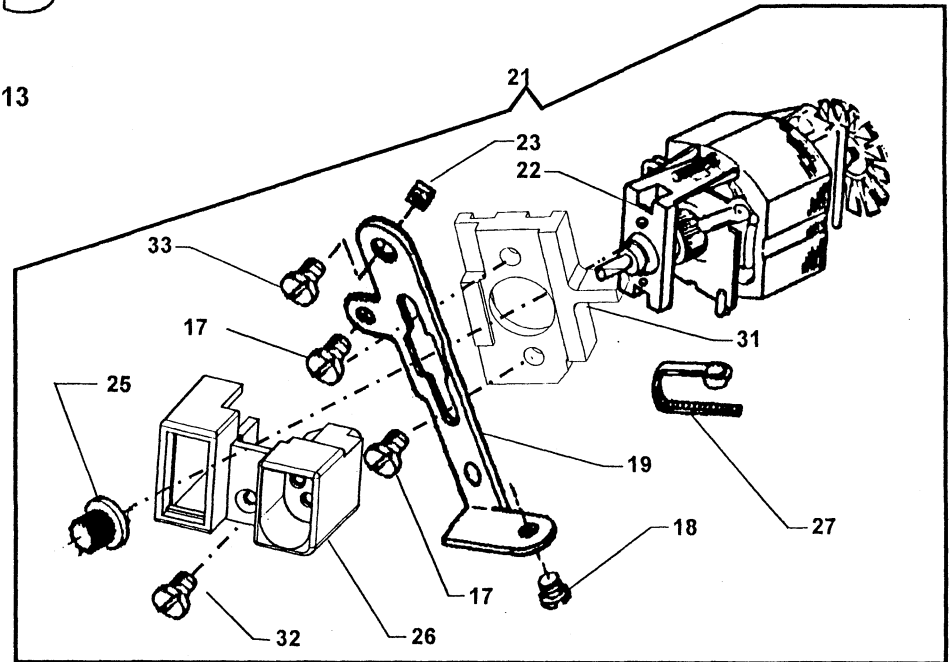
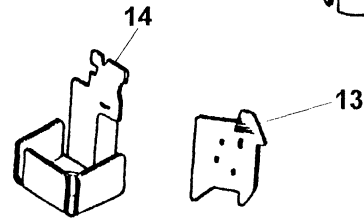
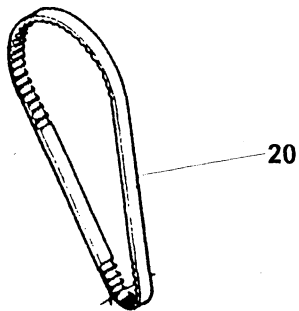
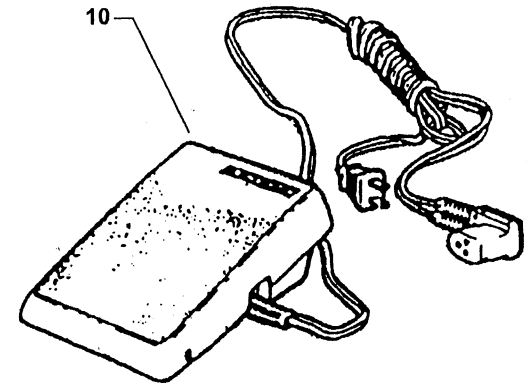
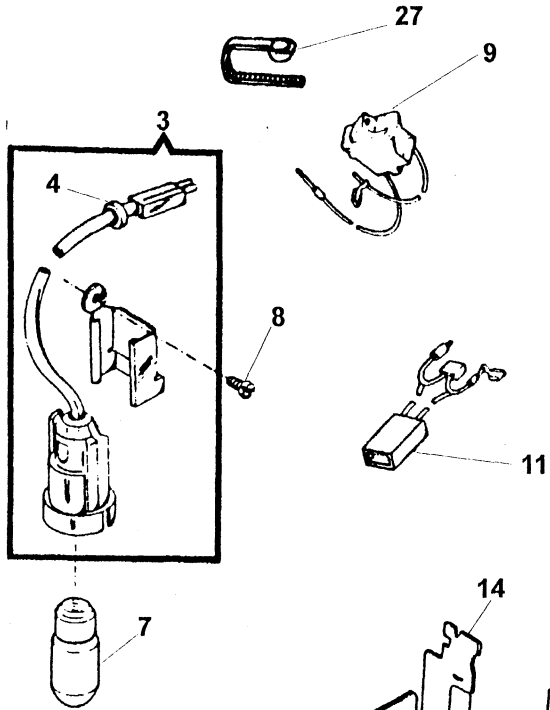
REV: _____
DATA: _DEC/02_

PARTS LIST

FEED SYSTEM

REF.	P/N	DESCRIPTION	9	9	9	5	C	9	9	9	9	9	9	5	9	9	9	5	9	9	9	5	5
			8	8	8	0	P	8	8	8	8	8	8	0	8	8	8	0	8	8	9	0	0
			0	0	0	1	1	0	0	1	1	1	1	2	1	2	2	4	3	3	3	5	6
			2	3	5	7	7	6	8	0	2	4	6	8	8	4	8	0	2	6	6	0	2
1	446485	FEED LIFTING LEVER HINGE STUD (ECCENTRIC) CLAMP	X	X	X	X	X	X	X	X	X	X	X	X	X	X	X	X	X	X	X	X	X
2	113455-001	FEED LIFTING LEVER HINGE STUD (ECCENTRIC) CLAMP SCREW	X	X	X	X	X	X	X	X	X	X	X	X	X	X	X	X	X	X	X	X	X
3	179955	FEED LIFTING LEVER HINGE STUD (ECCENTRIC) SPACER	X	X	X	X	X	X	X	X	X	X	X	X	X	X	X	X	X	X	X	X	X
4	446249	FEED LIFTING LEVER SPRING	X	X	X	X	X	X	X	X	X	X	X	X	X	X	X	X	X	X	X	X	X
7	357122-001	FEED LIFTING LEVER HINGE STUD (ECCENTRIC)	X	X	X	X	X	X	X	X	X	X	X	X	X	X	X	X	X	X	X	X	X
8	356222	FEED LEFTING LEVER ASSEMBLY	X	X	X	X	X	X	X	X	X	X	X	X	X	X	X	X	X	X	X	X	X
9	446228	FEED LIFTING CAM	X	X	X	X	X	X	X	X	X	X	X	X	X	X	X	X	X	X	X	X	X
10	544118	FEED LIFTING CAM SCREW	X	X	X	X	X	X	X	X	X	X	X	X	X	X	X	X	X	X	X	X	X
11	113455-001	FEED ROCK SHAFT CENTER SUPPORTING BRACKET SCREW	X	X	X	X	X	X	X	X	X	X	X	X	X	X	X	X	X	X	X	X	X
12	446484	FEED ROCK SHAFT CENTER CLAMP (LEFT & RIGHT)	X	X	X	X	X	X	X	X	X	X	X	X	X	X	X	X	X	X	X	X	X
13	446487-001	FEED ROCK SHAFT CENTER	X	X	X	X	X	X	X	X	X	X	X	X	X	X	X	X	X	X	X	X	X
14	353397	FEED ROCK SHAFT CENTER (RIGHT)NOISE DAMPENING WASHI	X	X	X	X	X	X	X	X	X	X	X	X	X	X	X	X	X	X	X	X	X
15	531623-451	FEED FORKED CONNECTION HINGE SCREW (ECCENTRIC)	X	X	X	X	X	X	X	X	X	X	X	X	X	X	X	X	X	X	X	X	X
16	354939-451	FEED BAR HINGE SCREW	X	X	X	X	X	X	X	X	X	X	X	X	X	X	X	X	X	X	X	X	X
17	446205	FEED BAR ASSEMBLY	X	X	X	X	X	X	X	X	X	X	X	X	X	X	X	X	X	X	X	X	X
18	179891	FEED DOG	X	X	X	X	X	X	X	X	X	X	X	X	X	X	X	X	X	X	X	X	X
19	355235-451	FEED DOG SCREW	X	X	X	X	X	X	X	X	X	X	X	X	X	X	X	X	X	X	X	X	X
20	446216	FEED ROCK SHAFT COMPLETE	X	X	X	X	X	X	X	X	X	X	X	X	X	X	X	X	X	X	X	X	X
21	353397	FEED ROCK SHAFT CENTER (LEFT) NOISE DAMPENING WASHE	X	X	X	X	X	X	X	X	X	X	X	X	X	X	X	X	X	X	X	X	X
22	53648-451	FEED FORKED CONNECTION SCREW STUD NUT	X	X	X	X	X	X	X	X	X	X	X	X	X	X	X	X	X	X	X	X	X
23	531926	FEED FORKED CONNECTION	X	X	X	X	X	X	X	X	X	X	X	X	X	X	X	X	X	X	X	X	X
24	44437	FEED FORKED CONNECTION SLIDE BLOCK	X	X	X	X	X	X	X	X	X	X	X	X	X	X	X	X	X	X	X	X	X
25	446244	FEED REGULATOR ASSEMBLY	X	X	X	X	X	X	X	X	X	X	X	X	X	X	X	X	X	X	X	X	X
26	141925-833	FEED REGULATOR SET SCREW	X	X	X	X	X	X	X	X	X	X	X	X	X	X	X	X	X	X	X	X	X
27	446483	FEED REGULATOR HINGE STUD	X	X	X	X	X	X	X	X	X	X	X	X	X	X	X	X	X	X	X	X	X
28	179890	FEED REGULATOR RETURN SPRING	X	X	X	X	X	X	X	X	X	X	X	X	X	X	X	X	X	X	X	X	X
29	445768	FEED REGULATOR RETURN SPRING BUSHING (PLASTIC)	X	X	X	X	X	X	X	X	X	X	X	X	X	X	X	X	X	X	X	X	X
31	353600	FEED REGULATOR HINGE STUD ASSEMBLY	X	X	X	X	X	X	X	X	X	X	X	X	X	X	X	X	X	X	X	X	X
32	531927	FEED FORKED CONNECTION WITH SLIDE BLOCK	X	X	X	X	X	X	X	X	X	X	X	X	X	X	X	X	X	X	X	X	X
33	353357-451	FEED ROCK SHAFT CENTER SUP.BRACKET SCREW WASHER	X	X	X	X	X	X	X	X	X	X	X	X	X	X	X	X	X	X	X	X	X

ELECTRICAL EQUIPMENT



REV: _____
DATE: DEC/02

PARTS LIST

ELECTRICAL EQUIPMENT

REF. P/N	DESCRIPTION	9	9	9	5	C	9	9	9	9	9	9	5	9	9	9	5	9	9	9	5	5
		8	8	8	0	P	8	8	8	8	8	8	0	8	8	8	0	8	8	9	0	0
		0	0	0	1	1	0	0	1	1	1	1	2	1	2	2	4	3	3	3	5	6
		2	3	5	7	7	6	8	0	2	4	6	8	8	4	8	0	2	6	6	0	2
3	605488-025 LIGHT LEAD COMPLETE CAT L9 (IEC CONSTRUCTION)	X	X	X	-	-	X	X	X	X	X	X	-	X	X	X	-	-	X	-	-	-
4	179908 LIGHT LEAD GROMMET	X	X	X	X	X	X	X	X	X	X	X	X	X	X	X	X	X	X	X	X	X
7	988076-001 LAMP (120V)	-	-	X	X	X	-	-	X	X	X	-	X	X	-	-	X	X	X	X	X	X
7	988076-003 LAMP (220/250V)	X	X	X	-	-	X	X	X	X	X	X	-	X	X	X	-	X	X	X	X	X
8	354592-451 LIGHT SOCKET MOUNTING SCREW	X	X	X	X	X	X	X	X	X	X	X	X	X	X	X	X	X	X	X	X	X
9	REFER TO CHARTS ON FOLLOWING PAGES																					
10	REFER TO CHARTS ON FOLLOWING PAGES																					
11	REFER TO CHARTS ON FOLLOWING PAGES																					
12	REFER TO CHARTS ON FOLLOWING PAGES																					
13	179901 HEAT SHIELD (WITHOUT GRAPHICS)	X	X	X	X	X	X	X	X	X	X	X	X	X	X	X	X	X	X	X	X	X
13	179910-451 LIGHT SHIELD (WITH GRAPHICS) (FOR US/CANADA)	-	-	X	X	X	-	-	X	X	X	-	X	X	-	-	X	X	X	-	-	-
14	605087-001 HEAT SHIELD (FOR EUROPE)	X	X	X	-	-	X	X	X	X	X	X	-	X	X	X	-	X	X	-	-	-
17	362264-901 MOTOR MOUNTING PLATE CLAMP SCREW	X	X	X	X	X	X	X	X	X	X	X	X	X	X	X	X	X	X	X	X	X
18	113370-451 MOTOR MOUNTING PLATE SCREW (LOWER)	X	X	X	X	X	X	X	X	X	X	X	X	X	X	X	X	X	X	X	X	X
19	356803-901 MOTOR MOUNTING PLATE	X	X	X	X	X	X	X	X	X	X	X	X	X	X	X	X	X	X	X	X	X
20	353518-001 MOTOR BELT (V)	X	X	X	X	X	X	X	X	X	X	X	X	X	X	X	X	X	X	X	X	X
21	REFER TO CHARTS ON FOLLOWING PAGES																					
22	REFER TO CHARTS ON FOLLOWING PAGES																					
23	313470-452 MOTOR MOUNTING PLATE SCREW NUT	X	X	X	X	X	X	X	X	X	X	X	X	X	X	X	X	X	X	X	X	X
25	988761-001 MOTOR PULLEY	X	X	X	X	X	X	X	X	X	X	X	X	X	X	X	X	X	X	X	X	X
26	REFER TO CHARTS ON FOLLOWING PAGES																					
27	605600-004 TYE RAP	X	X	X	X	X	X	X	X	X	X	X	X	X	X	X	X	X	X	X	X	X
31	362237-901 MOTOR MOUNTING PLATE SPACER	X	X	X	X	X	X	X	X	X	X	X	X	X	X	X	X	X	X	X	X	X
32	362263-901 MOTOR MOUNTING PLATE SPACER SCREW	X	X	X	X	X	X	X	X	X	X	X	X	X	X	X	X	X	X	X	X	X
33	113372-451 MOTOR MOUNTING PLATE SCREW (UPPER)	X	X	X	X	X	X	X	X	X	X	X	X	X	X	X	X	X	X	X	X	X

ELECTRICAL EQUIPMENT

		U.S	CANADA	EUROPE	GREAT BRITAIN
REF.	1 SPEED UNSUPRESSED	(120V)	(120V)	(220V)	(240V)
12	LIGHT COMPLETE	362160-002	362160-002		
21	MOTOR COMPLETE	362180-012	362180-012		
22	SERIES MOTOR MODULE	988752-010	988752-010		
26	COMUTATOR END	362239-012	362239-012		
10	CONTROLLER	362095-001	362095-001		
09	SWITCH COMPLETE	362307-003	362307-003		
11	LIGHT CONNECTOR HARNESS	988764-003	988764-003		
REF.	1 SPEED SUPRESSED				
03	LIGHT COMP.			605488-025	605488-025
21	MOTOR COMPLETE			362180-016	362180-016
22	SERIES MOTOR MODULE			988752-011	988752-011
26	COMUTATOR END			362239-016	362239-016
10	CONTROLLER			362095-002	362095-015
9	SWITCH COMPLETE			988763-004	988763-004
11	LIGHT CONNECTOR HARNESS			988768-003	988768-003

REV: _____
 DATA: DEC/02

ELECTRICAL EQUIPMENT

		ASIA & AFRICA & SOUTH AMERICA	ASIA & AFRICA & SOUTH AMERICA	AFRICA & SOUTH AMERICA	AMEDO
REF.	1 SPEED UNSUPRESSED	FLAT BLADE (120V)	FLAT BLADE (220V)	ROUND PIN (120V)	ROUND PIN (220V)
12	LIGHT COMPLETE	362001-007	362001-007	362001-007	362001-007
21	MOTOR COMPLETE	362180-013	362180-014	362180-013	362180-014
22	SERIES MOTOR MODULE	362207-005	362207-006	362207-005	362207-006
26	COMUTATOR END	362239-013	362239-014	362239-013	362239-014
10	CONTROLLER	362095-007	362095-008	362095-005	362095-006
09	SWITCH COMPLETE	362307-001	362307-001	362307-001	362307-001
11	LIGHT CONNECTOR HARNESS	988764-005	988764-005	988764-005	988764-005

REV: _____
 DATA: DEC/02

ELECTRICAL EQUIPMENT

		AFRICA & SOUTH AMERICA	SOUTH AFRICA	AUSTRALIA
REF.	1 SPEED UNSUPRESSED	ROUND PIN (220V)	ROUND PIN (220V)	(240V)
12	LIGHT COMPLETE	362001-007	362001-007	
21	MOTOR COMPLETE	362180-014	362180-013	
22	SERIES MOTOR MODULE	362207-006	362207-005	
26	COMUTATOR END	362239-014	362239-013	
10	CONTROLLER	362095-006	362095-005	
09	SWITCH COMPLETE	362307-001	362307-001	
11	LIGHT CONNECTOR HARNESS	988764-005	988764-005	
REF.	1 SPEED SUPRESSED			
03	LIGHT COMPLETE			605488-025
21	MOTOR COMPLETE			362180-016
22	SERIES MOTOR MODULE			988752-011
26	COMUTATOR END			362239-016
10	CONTROLLER			362095-010
09	SWITCH - 2 SPEED			988763-004
11	LIGHT CONNECTOR HARNESS			988768-003

REV.: _____
 DATA: DEC/02