

SINGER
8500/8600 Series

SINGER

SINGER FACTORY

MONZA

List of parts

Sewing Machines Series

8500/8600

contents

MECHANISM
GROUP NO.

PAGE

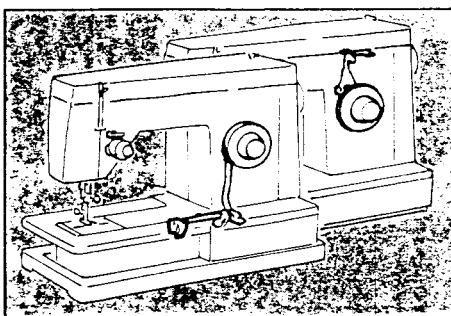
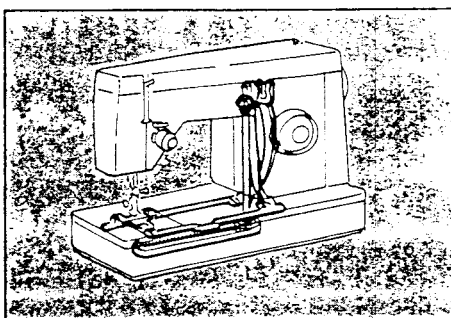
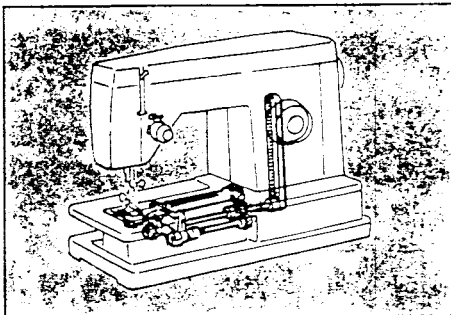
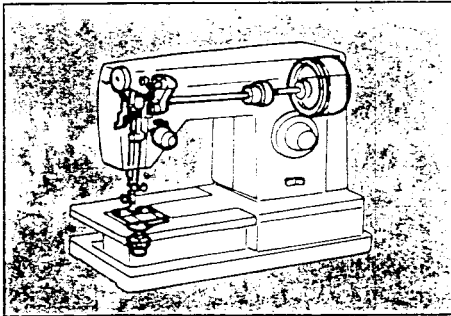
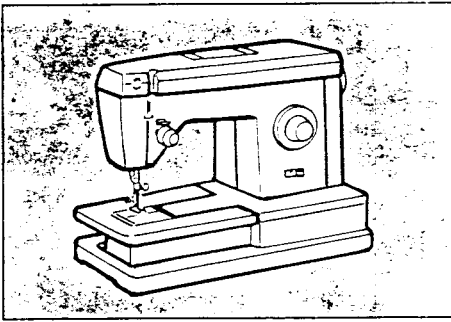
| | | |
|---|--|-----|
| 1 | TOP COVER | 4 |
| | FRONT, BACK and SIDES COVERS | 6,8 |
| | MACHINE BASE and CLOTH PLATE | 10 |
| 2 | NEEDLE BAR and DRIVE MECHANISM | 12 |
| | NEEDLE HOOK and PLATES | 14 |
| | PRESSURE BAR and TENSION | 16 |
| 3 | FEED and HOOK DRIVE MECHANISM (Tubular Bed) | 18 |
| | FEED and HOOK DRIVE MECHANISM (Flat Bed) | 20 |
| 4 | STITCH LENGTH and REVERSE MECHANISM | 22 |
| | BUTTONHOLER, FEED REGULATOR and CAM CONTROL FEED ENGAGING MECHANISM | 24 |
| | CAM CONTROL FEED and STITCH BALANCING MECHANISM | 26 |
| 5 | BIGHT AMPLITUDE and NEEDLE POSITION SELECTORS | 28 |
| | CAM STACK | 30 |
| | PATTERN SELECTOR | 32 |
| 6 | ATTACHMENTS | 34 |
| | MACHINE CARRYING CASE and BOTTOM COVER | 36 |
| 7 | ELECTRICS | 38 |

8500/8600 series includes the following models:

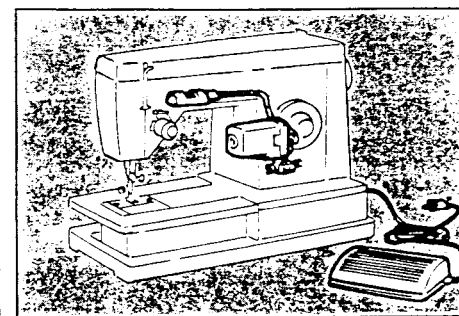
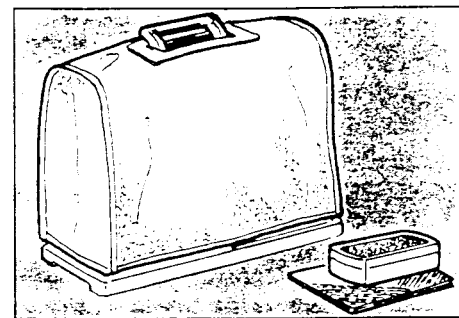
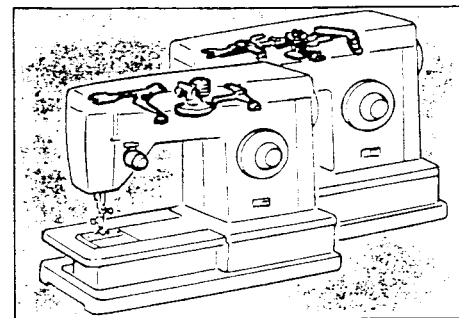
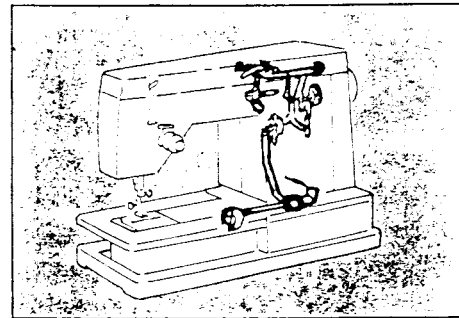
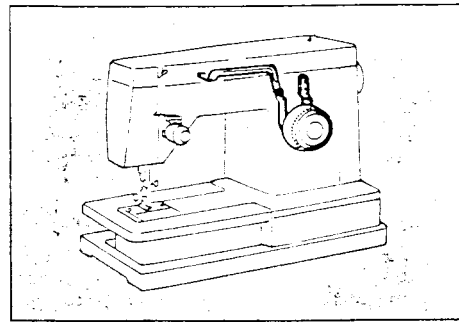
| | |
|---------------|------------------|
| 8502 Flat Bed | 8602 Tubular Bed |
| 8505 Flat Bed | 8605 Tubular Bed |
| 8518 Flat Bed | 8606 Tubular Bed |
| | 8610 Tubular Bed |
| | 8614 Tubular Bed |
| | 8618 Tubular Bed |

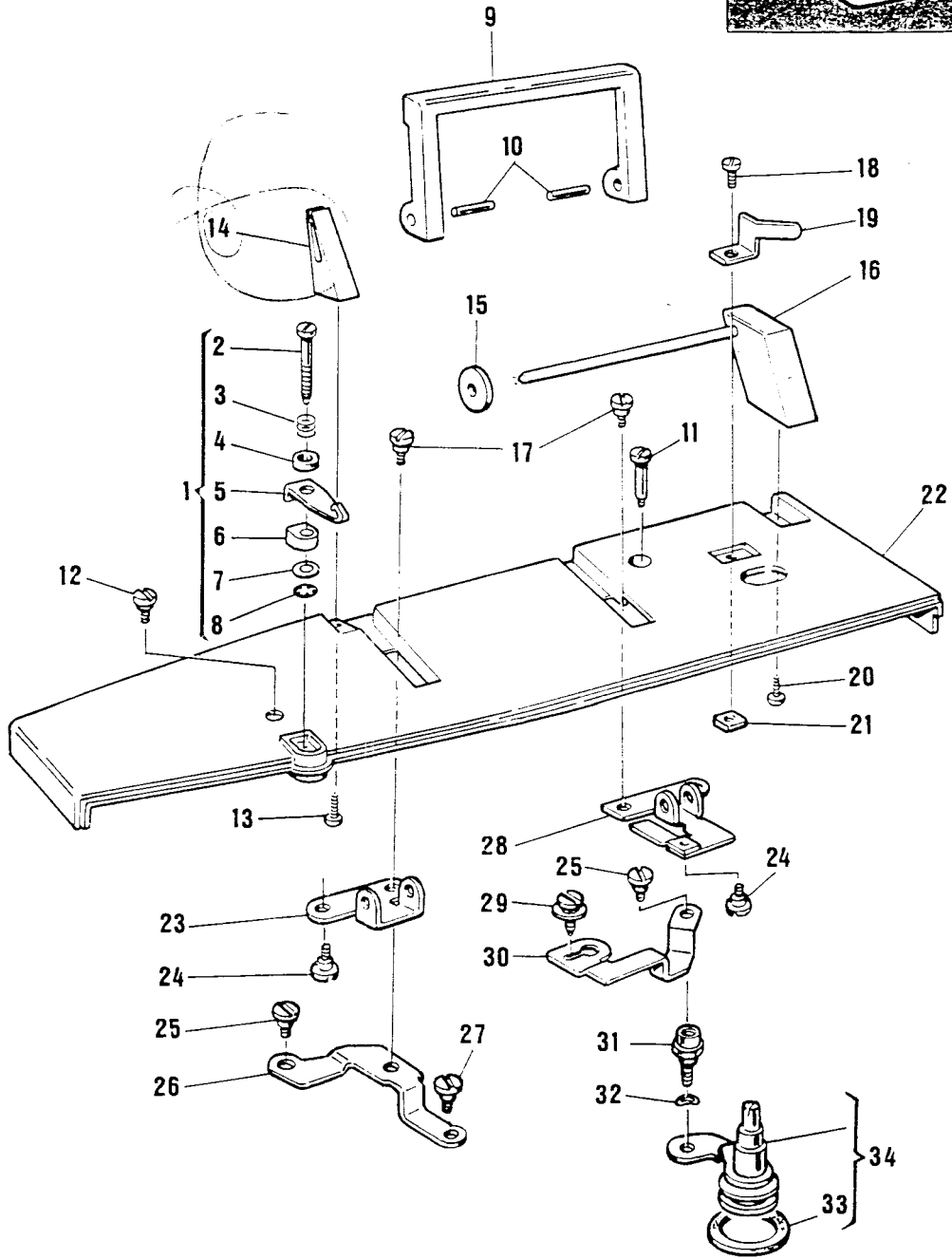
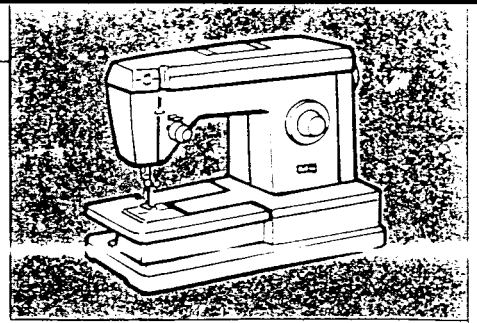
8500/8600 SERIES

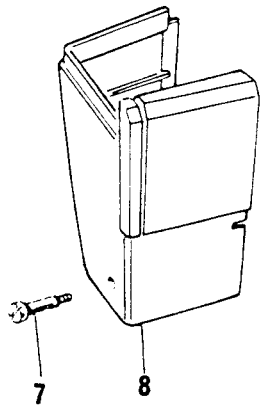
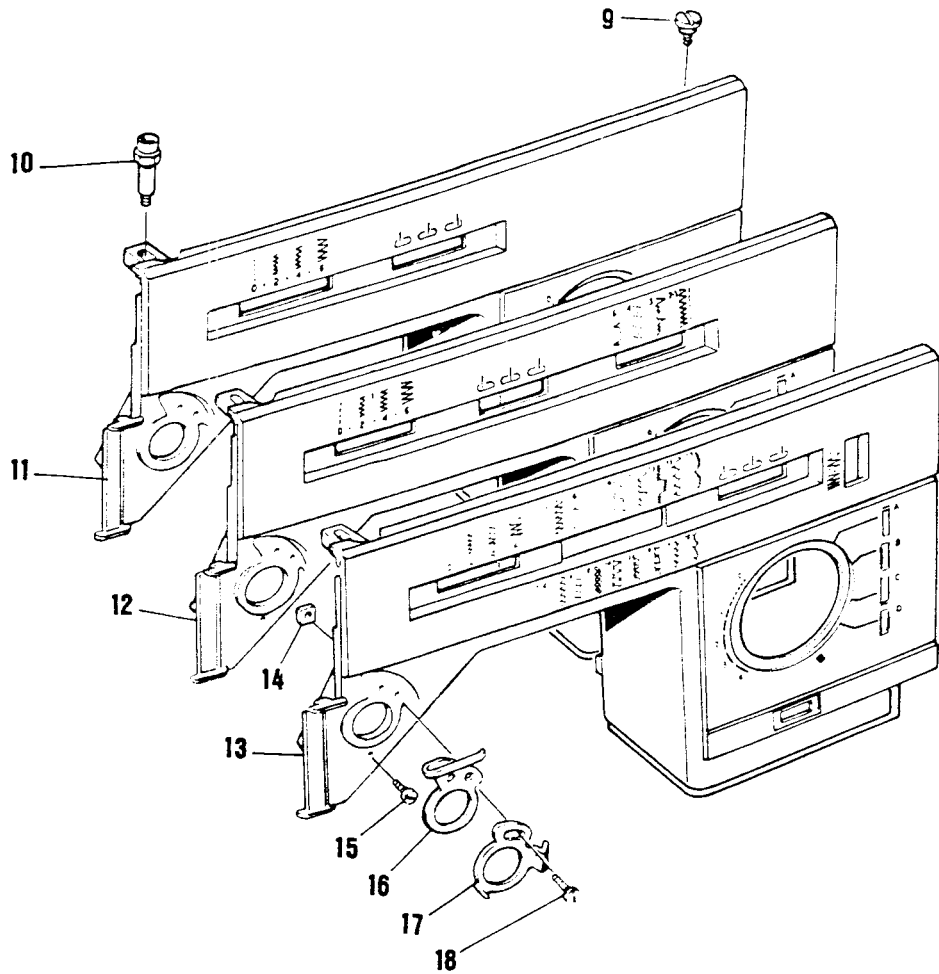
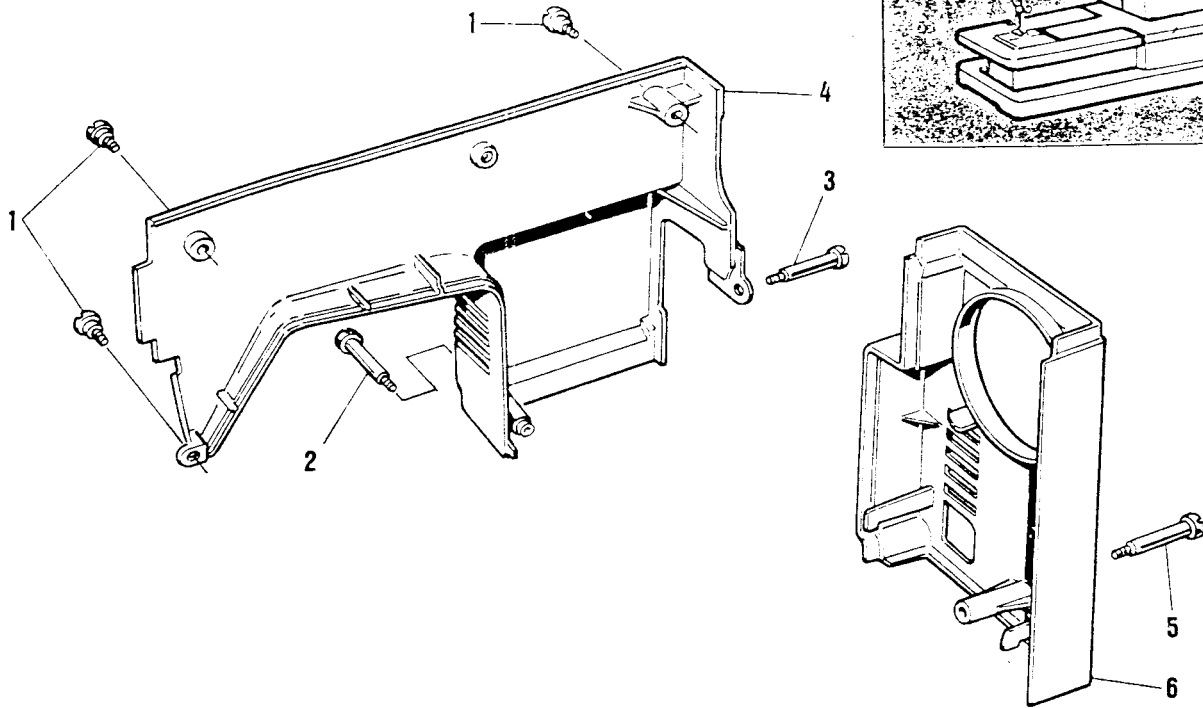
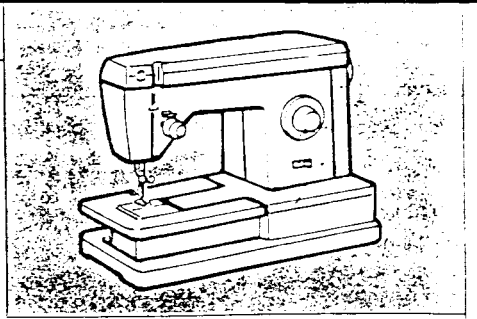
Group

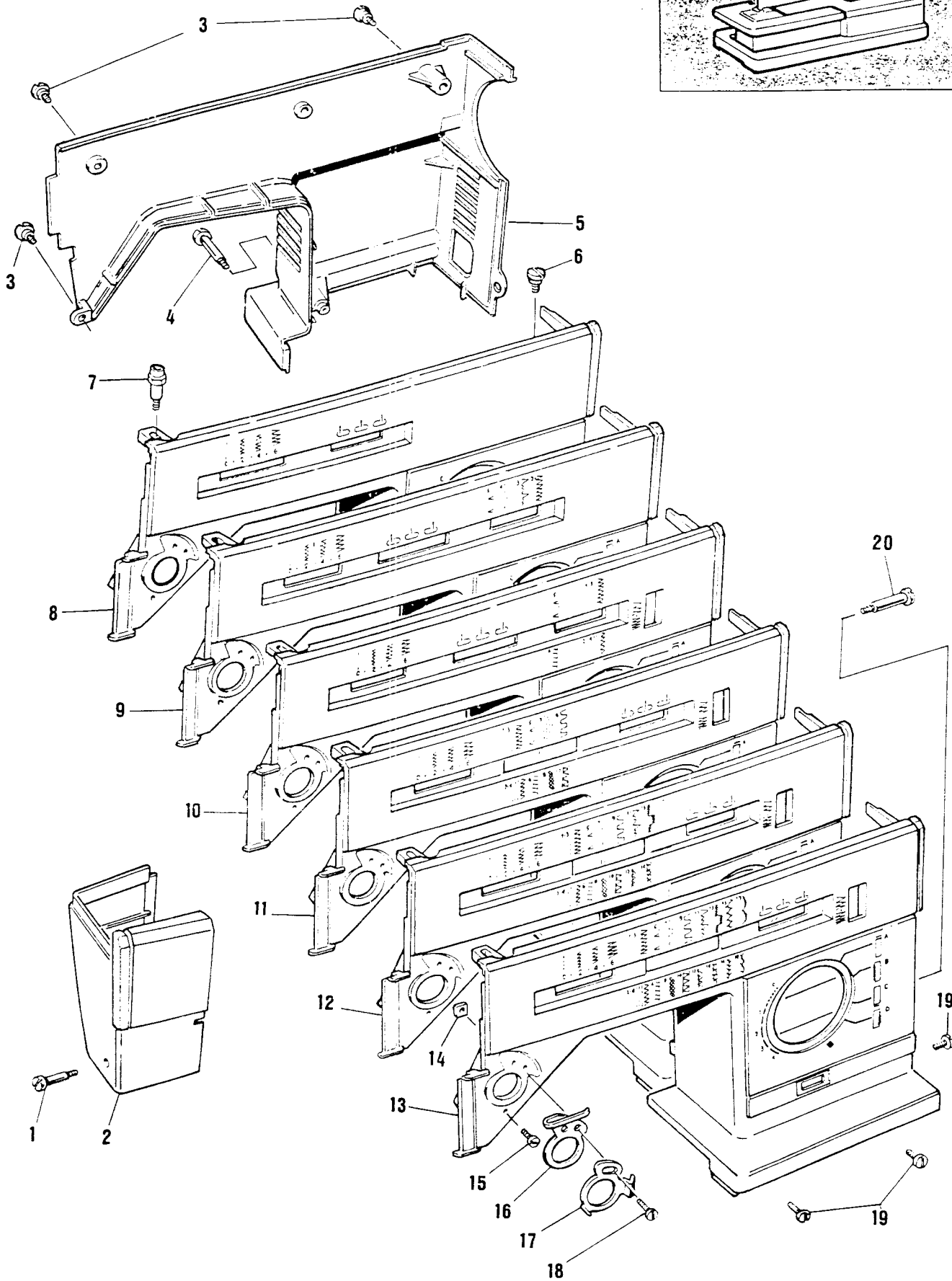
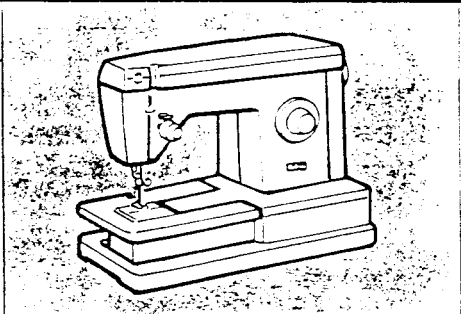


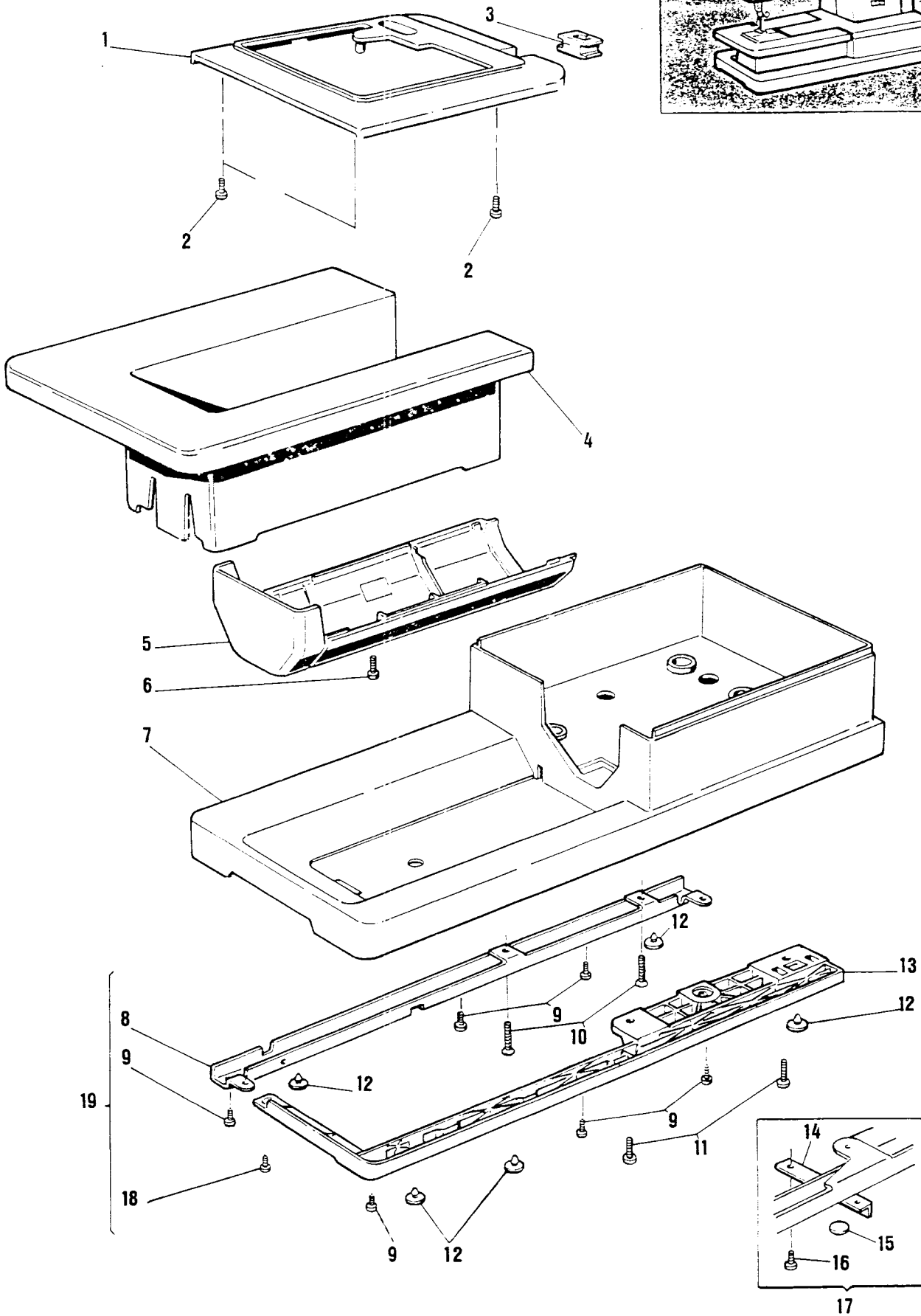
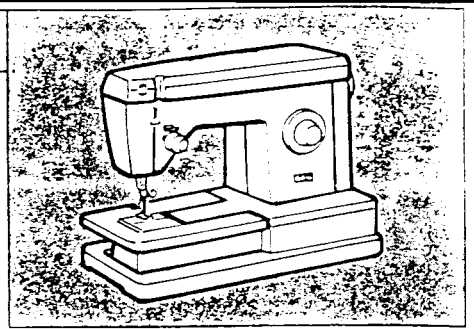
Group





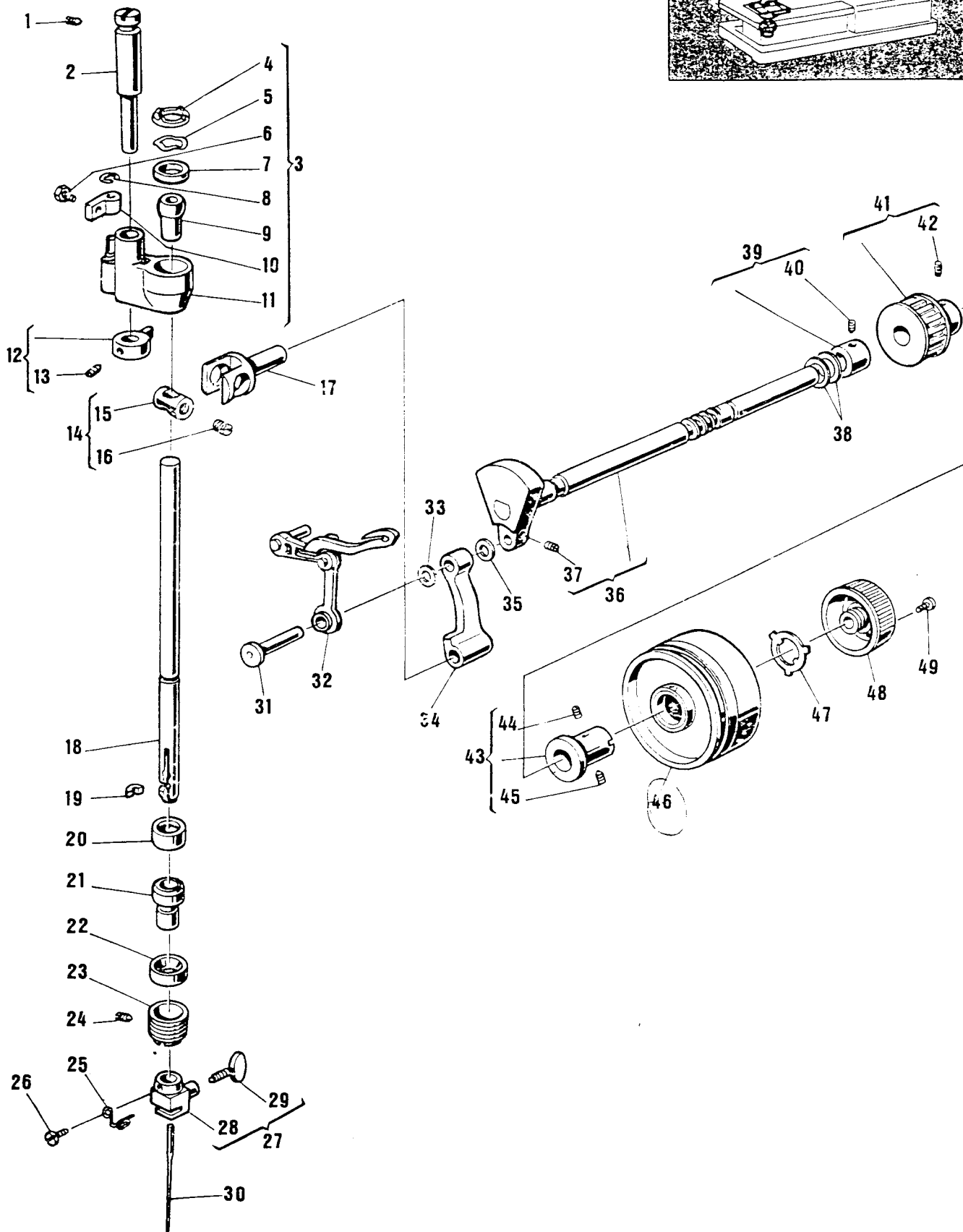
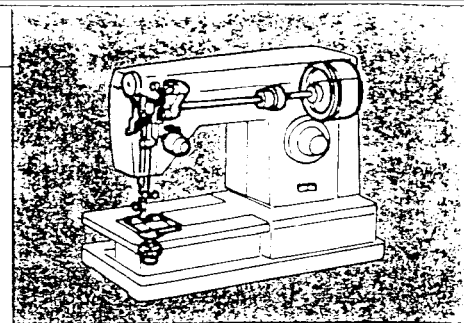


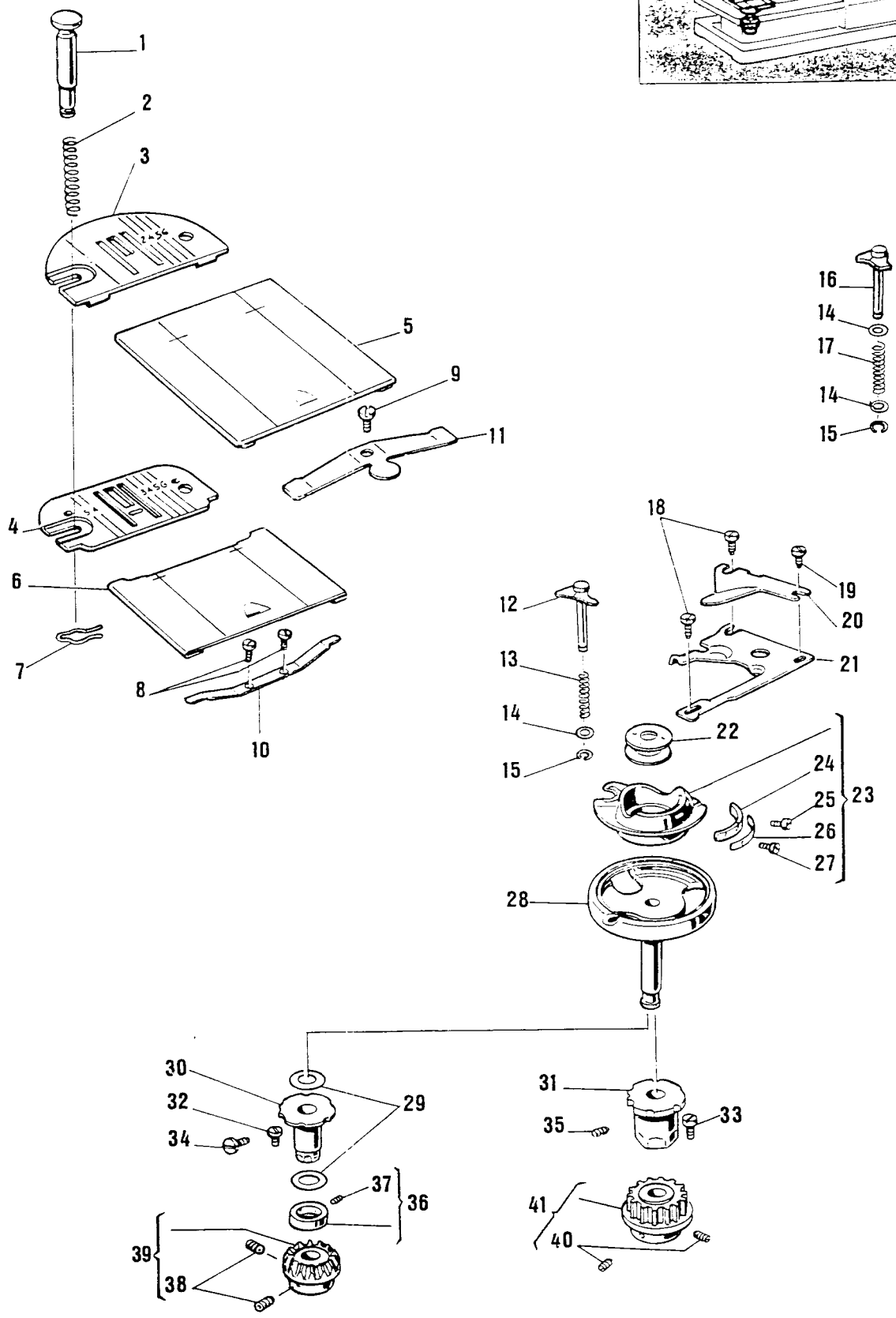
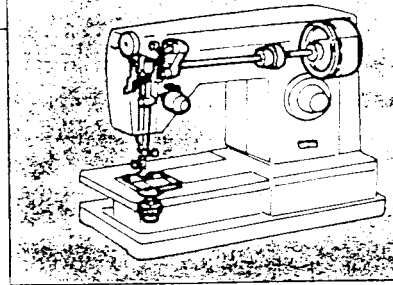




LIST OF PARTS FOR MACHINES 8500/8600 SERIES

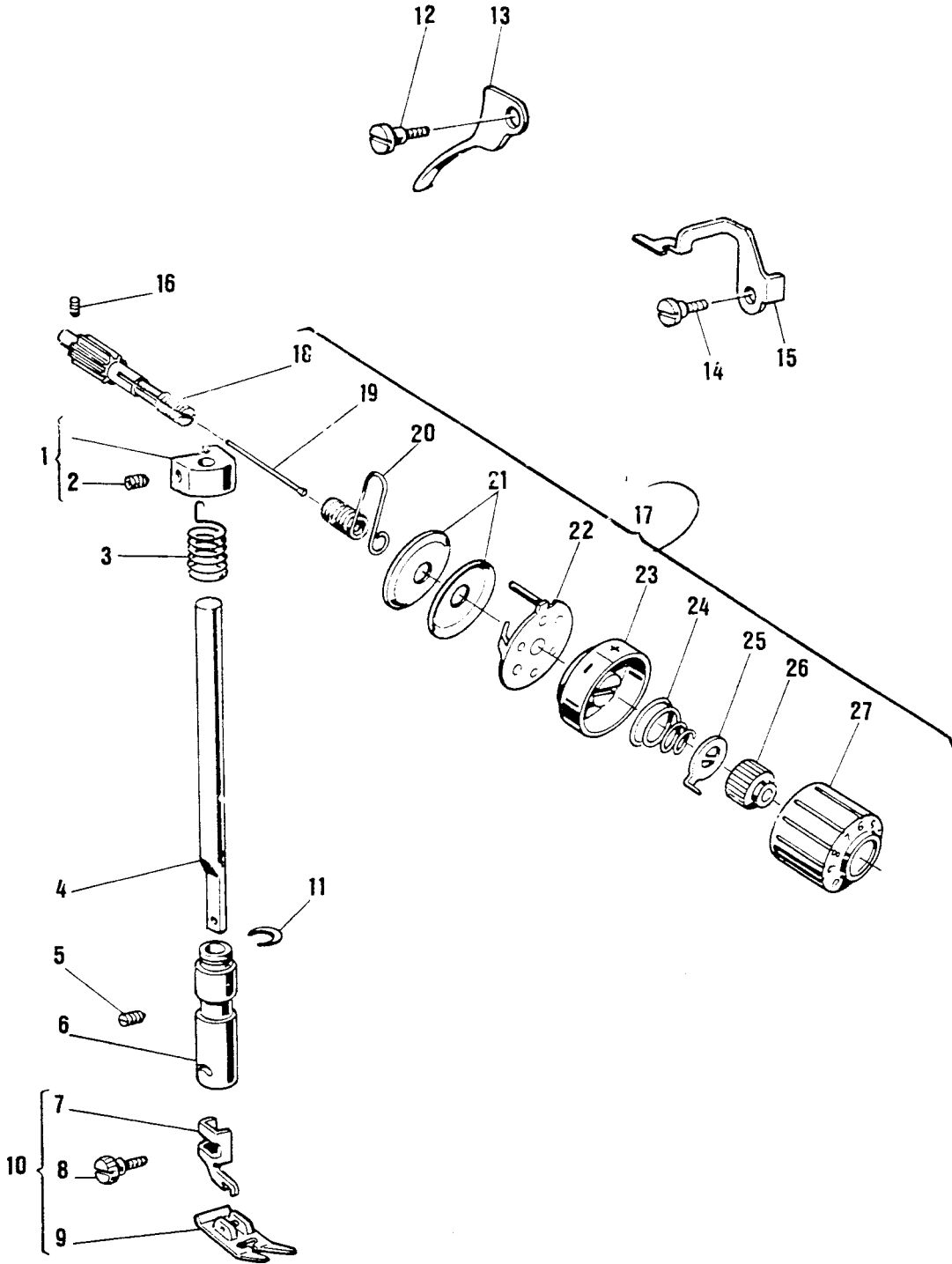
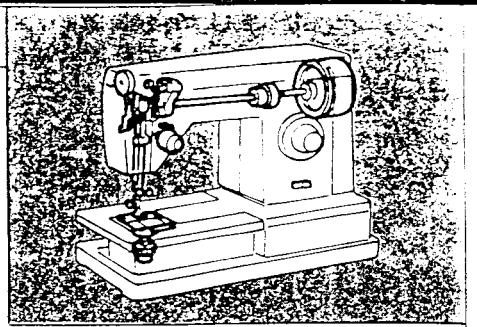
| REF. N. | PART. N° | PART DESCRIPTION | 8605 | 8505 | 8518 | 8618 | 8614 | 8610 | 8606 | 8602 | 8502 |
|---------|------------|--|------|------|------|------|------|------|------|------|------|
| 1 | 422472—454 | Bed cover | | • | • | | | | | | • |
| 2 | 139986 | Bed cover screw (4) | | • | • | | | | | | • |
| 3 | 352584—454 | Grommet | | • | • | | | | | | • |
| 4 | 421657—454 | Cloth plate | • | | | • | • | • | • | • | |
| 5 | 352839—454 | Bed cover (tubular) | • | | | • | • | • | • | • | |
| 6 | 514690—451 | Bed cover (tubular) screw | • | | | • | • | • | • | • | |
| 7 | 421655 | Machine base | • | | | • | • | • | • | • | |
| 8 | 421660 | Machine base support back | • | | | • | • | • | • | • | |
| 9 | 354738—451 | Machine support (back and front) screw (8) | • | | | • | • | • | • | • | |
| 10 | 354790—451 | Base support (back) screw (2) | • | | | • | • | • | • | • | |
| 11 | 354745—451 | Base support (front) screw (2) | • | | | • | • | • | • | • | |
| 12 | 352797 | Machine base cushion (5) | • | | | • | • | • | • | • | |
| 13 | 421736 | Machine base support | • | | | • | • | • | • | • | |
| 14 | 352795 | Bracket (for cabinets only) | • | | | • | • | • | • | • | |
| 15 | 422481—451 | Cushion (for cabinets only) | • | | | • | • | • | • | • | |
| 16 | 354745—451 | Bracket screw (for cabinets only) | • | | | • | • | • | • | • | |
| 17 | 353035 | Kit cpl. (for cabinets only) | • | | | • | • | • | • | • | |
| 18 | 421712 | Screw | • | | | • | • | • | • | • | |
| 19 | 422010—455 | Machine base cpl. | • | | | • | • | • | •* | • | |

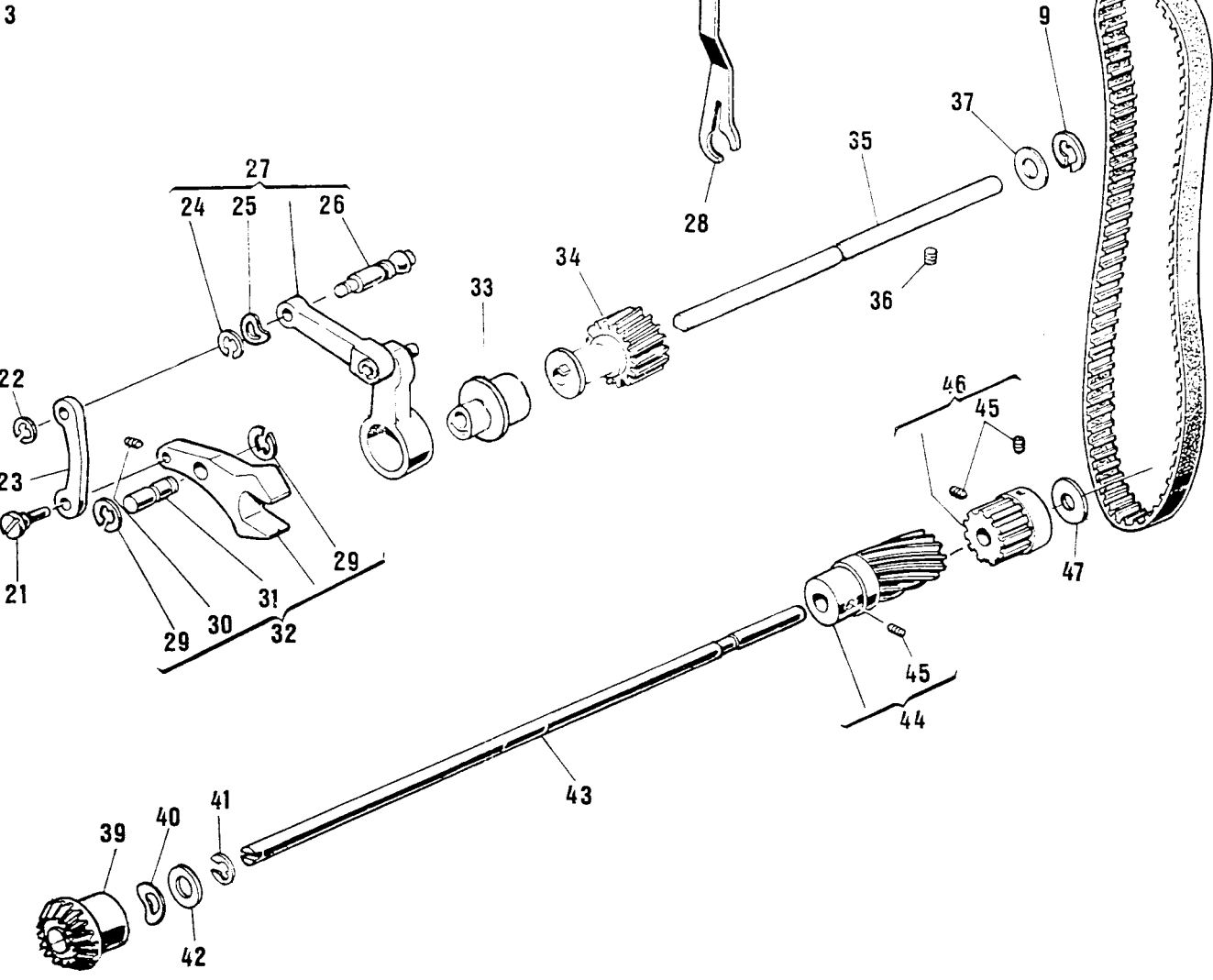
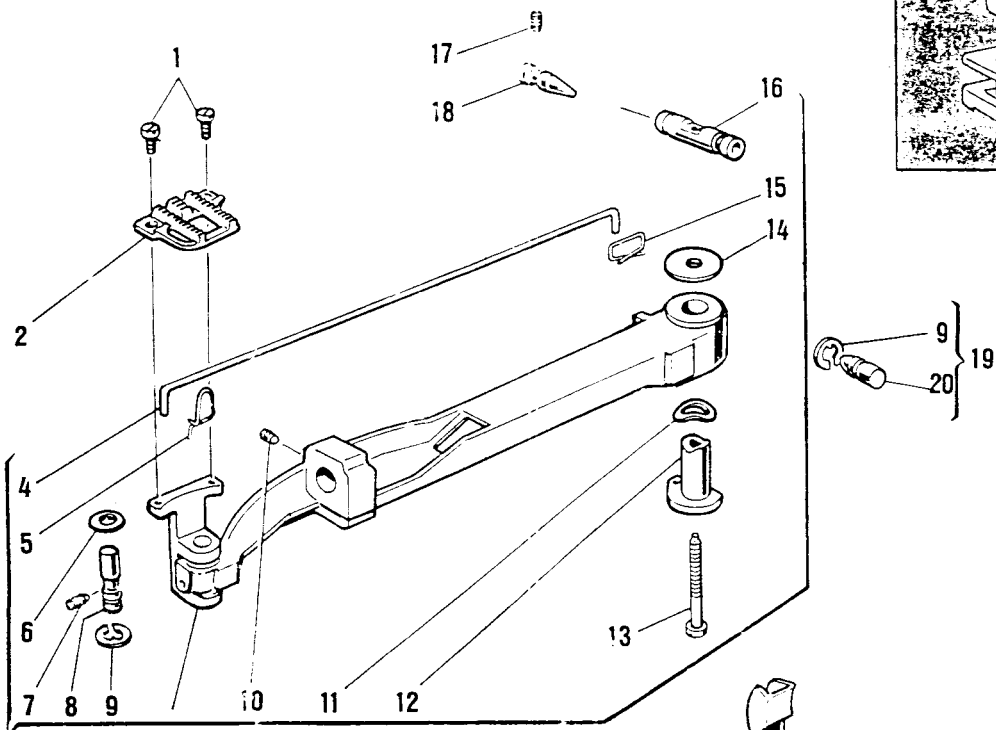
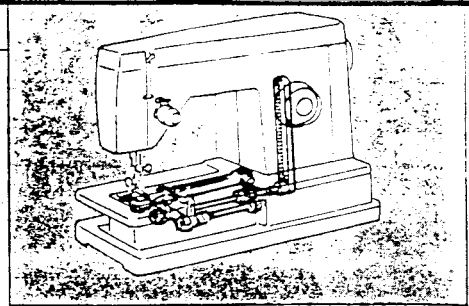




LIST OF PARTS FOR MACHINES 8500/8600 SERIES

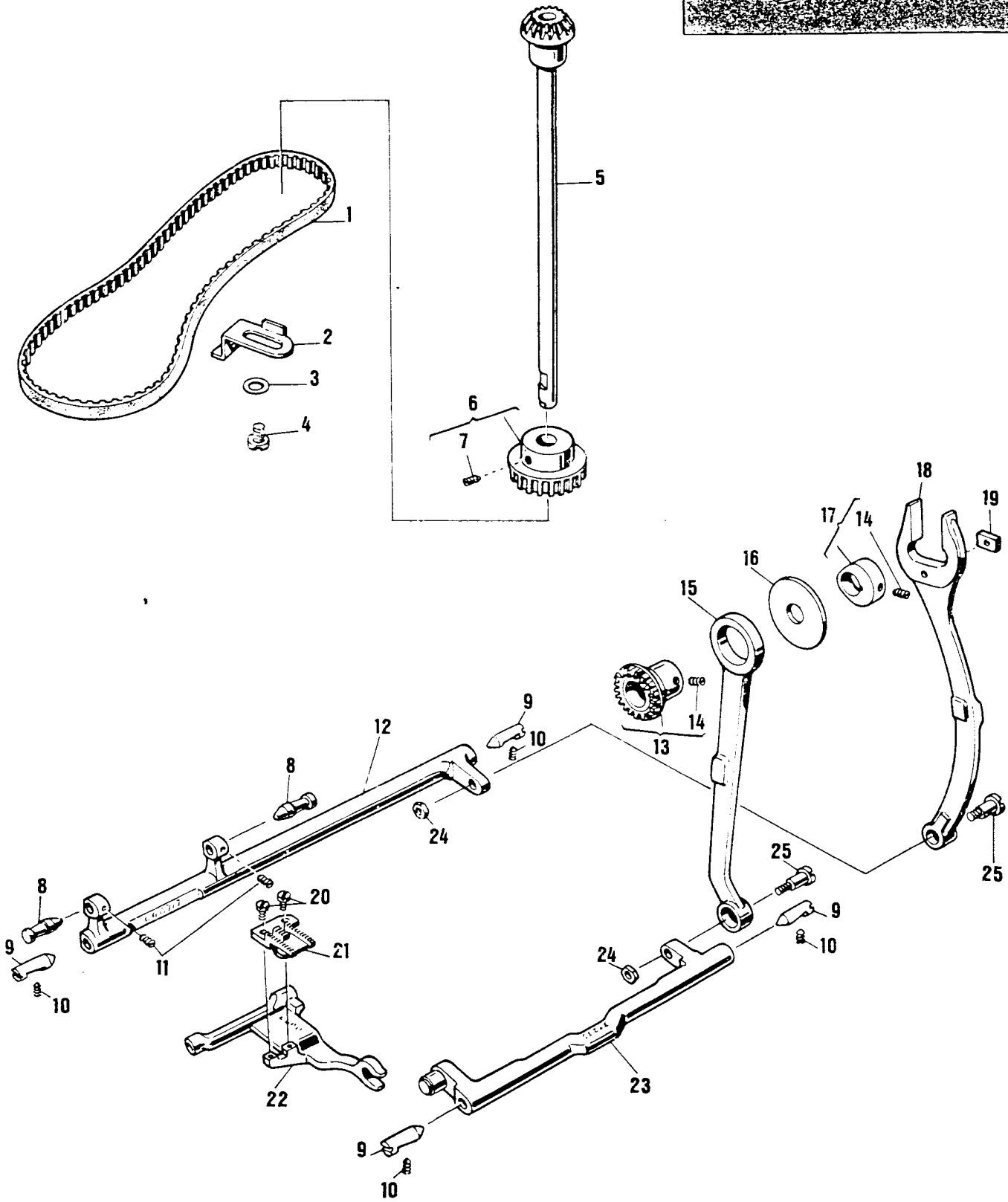
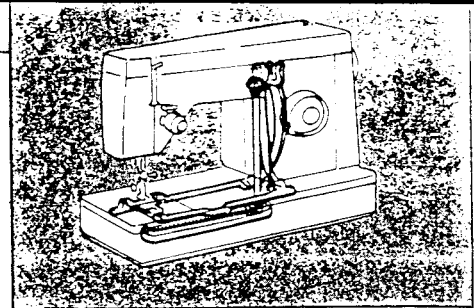
| REF. N. | PART. N° | PART DESCRIPTION | 8505 | 8505 | 8518 | 8618 | 8614 | 8610 | 8606 | 8602 | 8502 |
|---------|------------|---------------------------------|------|------|------|------|------|------|------|------|------|
| 1 | 447572 | Needle plate clamp | • | • | • | • | • | • | • | • | • |
| 2 | 153930 | Needle plate clamp spring | • | • | • | • | • | • | • | • | • |
| 3 | 447573 | Needle plate | | • | • | | | | | | • |
| 4 | 447580 | Needle plate | • | | | • | • | • | • | • | |
| 5 | 44838 | Bed slide | | • | • | | | | | | • |
| 6 | 422229 | Bed slide | • | | | • | • | • | • | • | |
| 7 | 179658 | Clip | • | • | • | • | • | • | • | • | • |
| 8 | 354134 | Bed slide spring screw (2) | • | | | • | • | • | • | • | |
| 9 | 354799 | Bed slide spring screw | | • | • | | | | | | • |
| 10 | 103344 | Bed slide spring | • | | | • | • | • | • | • | |
| 11 | 37239 | Bed slide spring | | • | • | | | | | | • |
| 12 | 422129 | Retaining plate | • | | | • | • | • | • | • | |
| 13 | 319735 | Spring | • | | | • | • | • | • | • | |
| 14 | 319737-451 | Washer | • | • | • | • | • | • | • | • | • |
| 15 | 319736 | Clip | • | • | • | • | • | • | • | • | • |
| 16 | 353123 | Retaining plate | | • | • | | | | | | • |
| 17 | 353122 | Spring | | • | • | | | | | | • |
| 18 | 354229-451 | Position plate screw (2) | • | • | • | • | • | • | • | • | • |
| 19 | 354227-451 | Position plate screw | • | • | • | • | • | • | • | • | • |
| 20 | 381903 | Retaining plate (adjustable) | • | • | • | • | • | • | • | • | • |
| 21 | 44873 | Position plate | • | • | • | • | • | • | • | • | • |
| 22 | 172336 | Bobbin (plastic) | • | • | • | • | • | • | • | • | • |
| 23 | 421325 | Bobbin case cpl. | • | • | • | • | • | • | • | • | • |
| 24 | 310084-452 | Tension spring segment | • | • | • | • | • | • | • | • | • |
| 25 | 139975 | Tension spring segment screw | • | • | • | • | • | • | • | • | • |
| 26 | 310883 | Tension spring | • | • | • | • | • | • | • | • | • |
| 27 | 354183 | Tension regulating screw | • | • | • | • | • | • | • | • | • |
| 28 | 353104 | Rotating hook | • | • | • | • | • | • | • | • | • |
| 29 | 506164 | Washer (2) | • | | • | • | • | • | • | • | |
| 30 | 353237 | Flanged bushing (Eccentric) | • | | • | • | • | • | • | • | |
| 31 | 446942 | Flanged bushing (Eccentric) | | • | | | | | | | • |
| 32 | 354133-451 | Position screw | • | | • | • | • | • | • | • | |
| 33 | 139943 | Position screw | | • | | | | | | | • |
| 34 | 514689-451 | Bushing set screw | • | | • | • | • | • | • | • | |
| 35 | 141925 | Bushing set screw | | • | | | | | | | • |
| 36 | 116084 | Rotating hook collar | • | | • | • | • | • | • | • | |
| 37 | 114312 | Collar set screw | • | | • | • | • | • | • | • | |
| 38 | 514721 | Bevel gear set screw (2) | • | | • | • | • | • | • | • | |
| 39 | 103361-001 | Bevel gear cpl. — | • | | • | • | • | • | • | • | |
| 40 | 354774-451 | Belt drive pulley set screw (2) | | • | | | | | | | • |
| 41 | 352882 | Belt drive pulley cpl. | | • | | | | | | | • |





LIST OF PARTS FOR MACHINES 8500/8600 SERIES

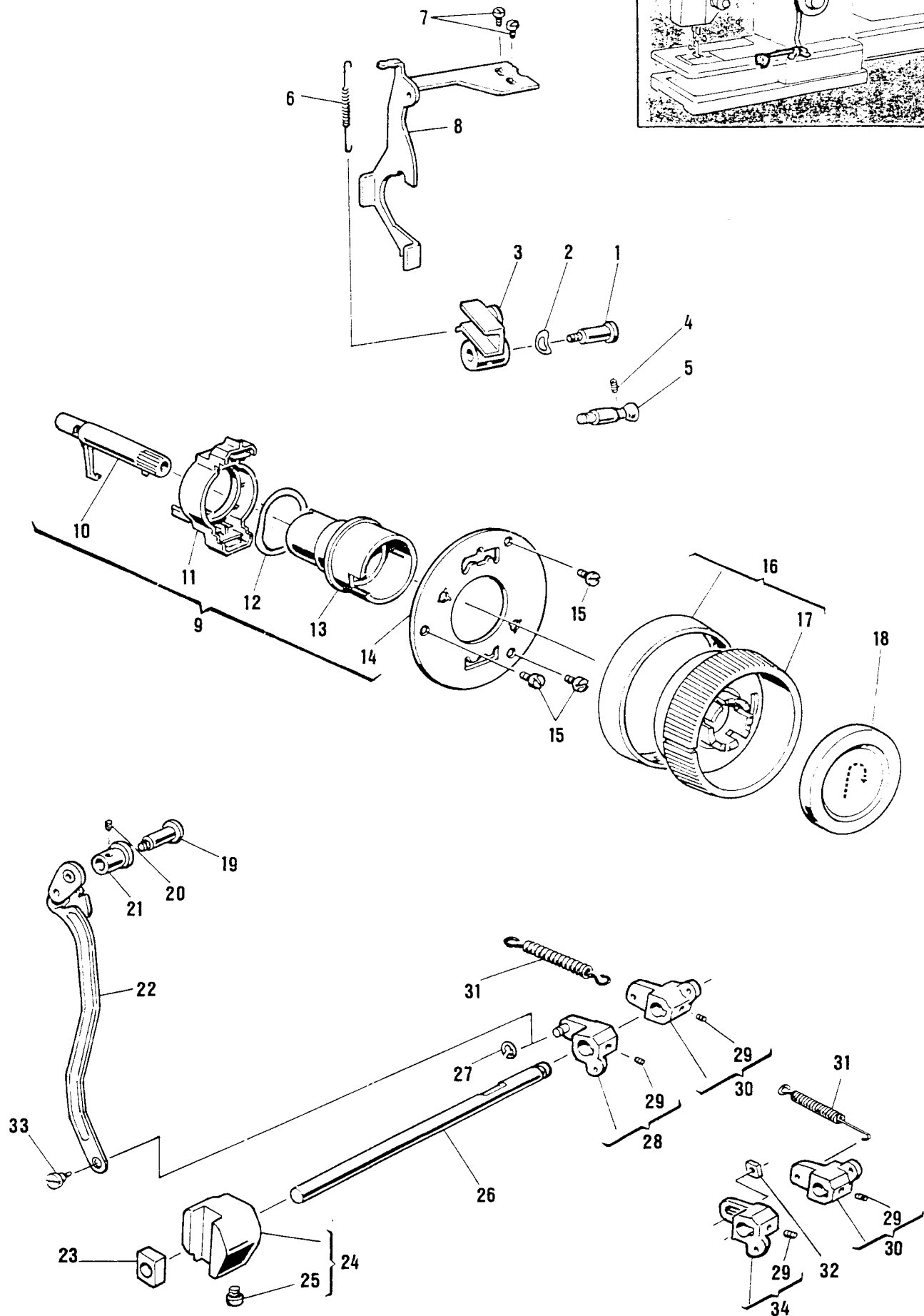
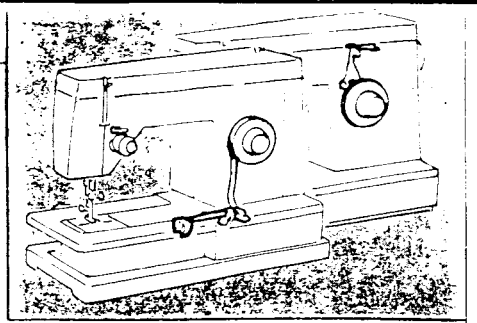
| REF. N. | PART. N° | PART DESCRIPTION | 8605 | 8505 | 8518 | 8618 | 8614 | 8610 | 8606 | 8602 | 8502 |
|---------|------------|---|------|------|------|------|------|------|------|------|------|
| 1 | 141920 | Feed dog screw (2) | • | | • | • | • | • | • | • | • |
| 2 | 447581 | Feed dog | • | | • | • | • | • | • | • | • |
| 3 | 422385 | Feed bar cpl. | • | | • | • | • | • | • | • | • |
| 4 | 422335—000 | Compensating link | • | | • | • | • | • | • | • | • |
| 5 | 422561—000 | Retaining spring | • | | • | • | • | • | • | • | • |
| 6 | 511210 | Washer | • | | • | • | • | • | • | • | • |
| 7 | 544100 | Screw | • | | • | • | • | • | • | • | • |
| 8 | 511052 | Stud | • | | • | • | • | • | • | • | • |
| 9 | 511213 | Retaining ring | • | | • | • | • | • | • | • | • |
| 10 | 549308 | Set screw | • | | • | • | • | • | • | • | • |
| 11 | 511211 | Washer | • | | • | • | • | • | • | • | • |
| 12 | 422340 | Bushing | • | | • | • | • | • | • | • | • |
| 13 | 514744—451 | Feed bar guide pin screw | • | | • | • | • | • | • | • | • |
| 14 | 422338 | Washer | • | | • | • | • | • | • | • | • |
| 15 | 422337—000 | Retaining spring | • | | • | • | • | • | • | • | • |
| 16 | 421814 | Feed bar guide pin | • | | • | • | • | • | • | • | • |
| 17 | 514556—451 | Set screw | • | | • | • | • | • | • | • | • |
| 18 | 507917 | Feed bar guide pin centre (black) | • | | • | • | • | • | • | • | • |
| 19 | 502310 | Feed bar guide pin centre cpl. (front) | • | | • | • | • | • | • | • | • |
| 20 | 502309 | Feed bar guide pin centre (front) | • | | • | • | • | • | • | • | • |
| 21 | 511056 | Hinge stud (eccentric) | • | | • | • | • | • | • | • | • |
| 22 | 507063 | Retaining ring | • | | • | • | • | • | • | • | • |
| 23 | 511016 | Feed lifting fork connection | • | | • | • | • | • | • | • | • |
| 24 | 502744 | Retaining ring | • | | • | • | • | • | • | • | • |
| 25 | 422388 | Washer | • | | • | • | • | • | • | • | • |
| 26 | 422345 | Hinge stud (eccentric) | • | | • | • | • | • | • | • | • |
| 27 | 422347 | Drive connection | • | | • | • | • | • | • | • | • |
| 28 | 421875 | Belt tension adjuster lever | • | | • | • | • | • | • | • | • |
| 29 | 511213 | Retaining ring | • | | • | • | • | • | • | • | • |
| 30 | 514685 | Set screw | • | | • | • | • | • | • | • | • |
| 31 | 511057 | Hinge stud | • | | • | • | • | • | • | • | • |
| 32 | 422514 | Feed lifting fork cpl. | • | | • | • | • | • | • | • | • |
| 33 | 422361 | Feed eccentric | • | | • | • | • | • | • | • | • |
| | 447899 | Feed eccentric | • | | | | | | | | |
| 34 | 422325 | Feed drive shaft gear cpl. | • | | • | • | • | • | • | • | • |
| 35 | 422324 | Feed drive shaft | • | | • | • | • | • | • | • | • |
| 36 | 514556 | Set screw | • | | • | • | • | • | • | • | • |
| 37 | 116073 | Drive shaft washer | • | | • | • | • | • | • | • | • |
| 38 | 421035—001 | Drive shaft belt | • | | • | • | • | • | • | • | • |
| 39 | 422395 | Drive shaft bevel gear | • | | • | • | • | • | • | • | • |
| 40 | 507722 | Rotating hook drive shaft spring washer | • | | • | • | • | • | • | • | • |
| 41 | 511213 | Retaining ring | • | | • | • | • | • | • | • | • |
| 42 | 116073 | Drive shaft washer | • | | • | • | • | • | • | • | • |
| 43 | 422394 | Rotating hook drive shaft | • | | • | • | • | • | • | • | • |
| 44 | 422408 | Drive shaft gear cpl. | • | | • | • | • | • | • | • | • |
| 45 | 514556 | Set screw | • | | • | • | • | • | • | • | • |
| 46 | 352871 | Drive shaft gear | • | | • | • | • | • | • | • | • |
| 47 | 421356 | Damping washer | • | | • | • | • | • | • | • | • |

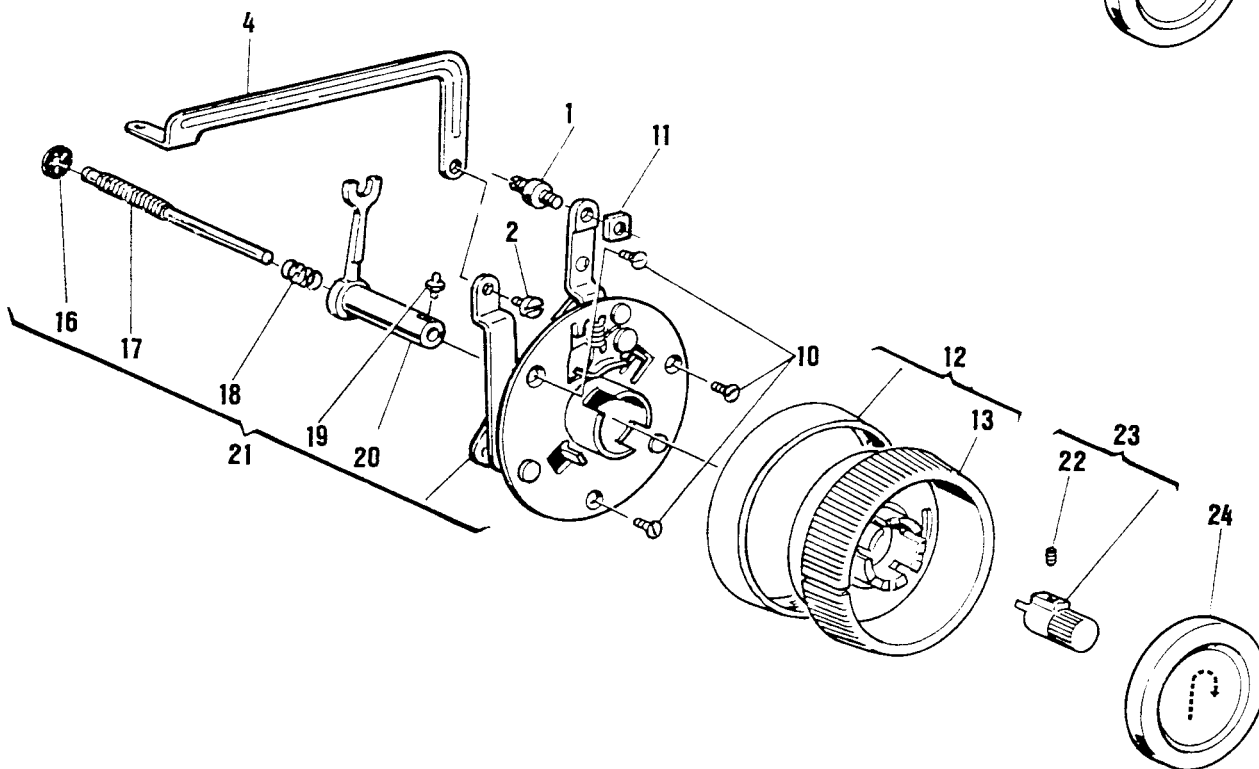
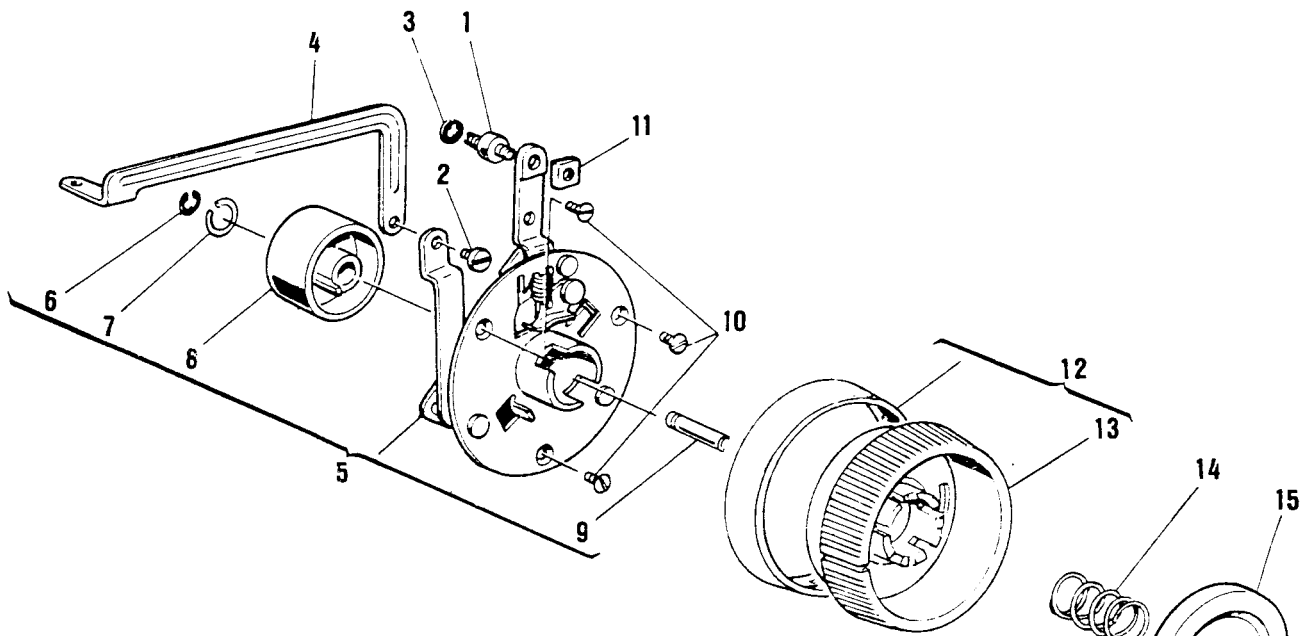
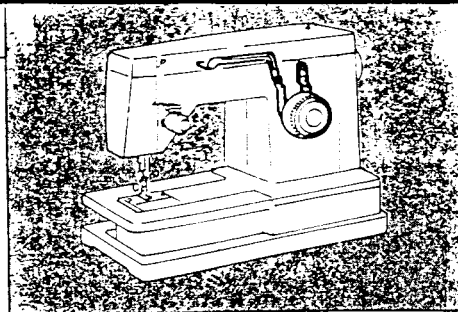


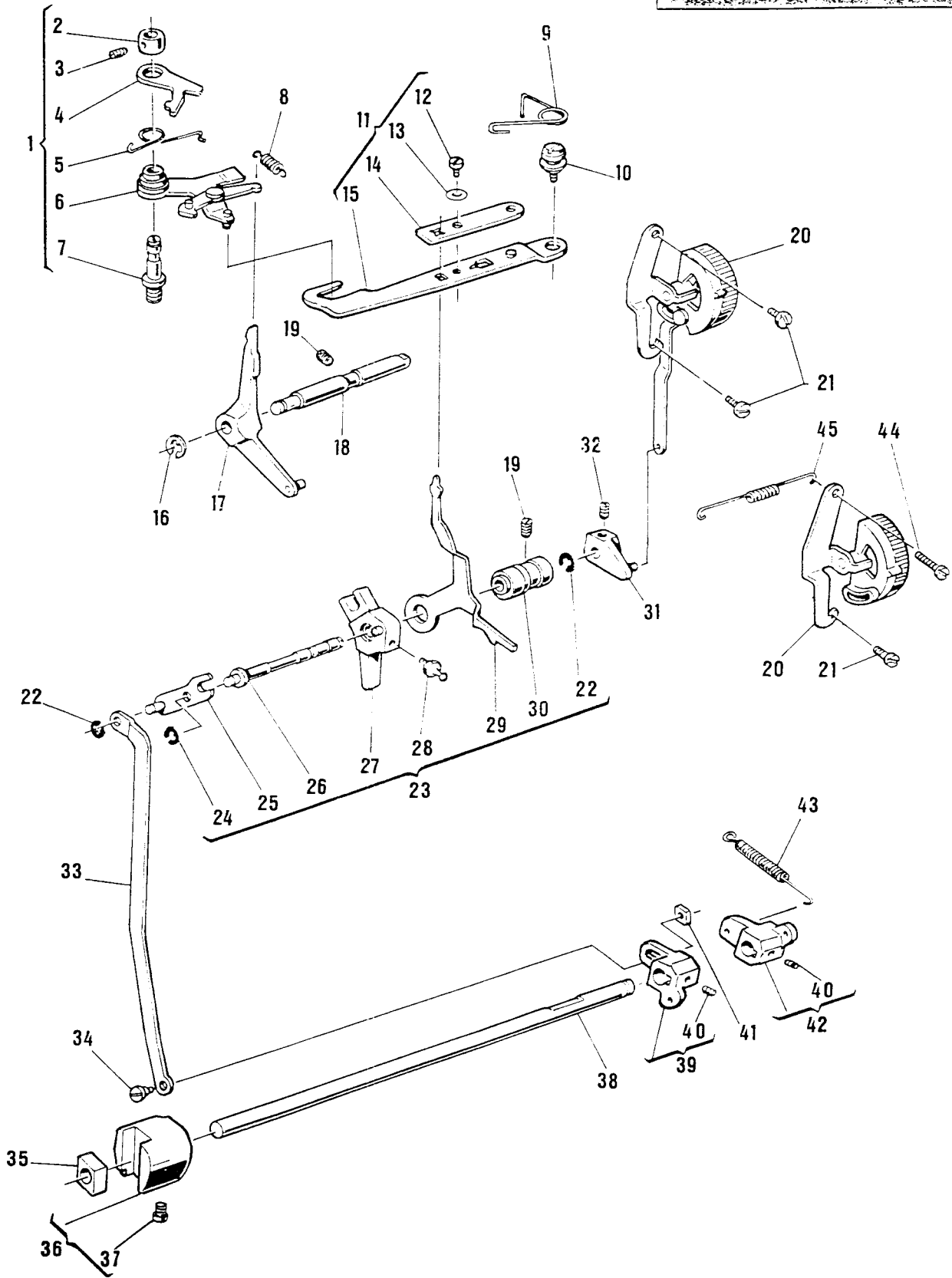
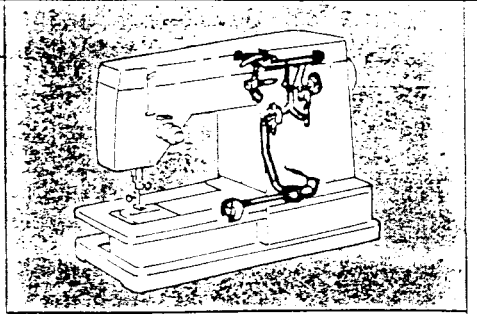
LIST OF PARTS FOR MACHINES 8500/8600 SERIES

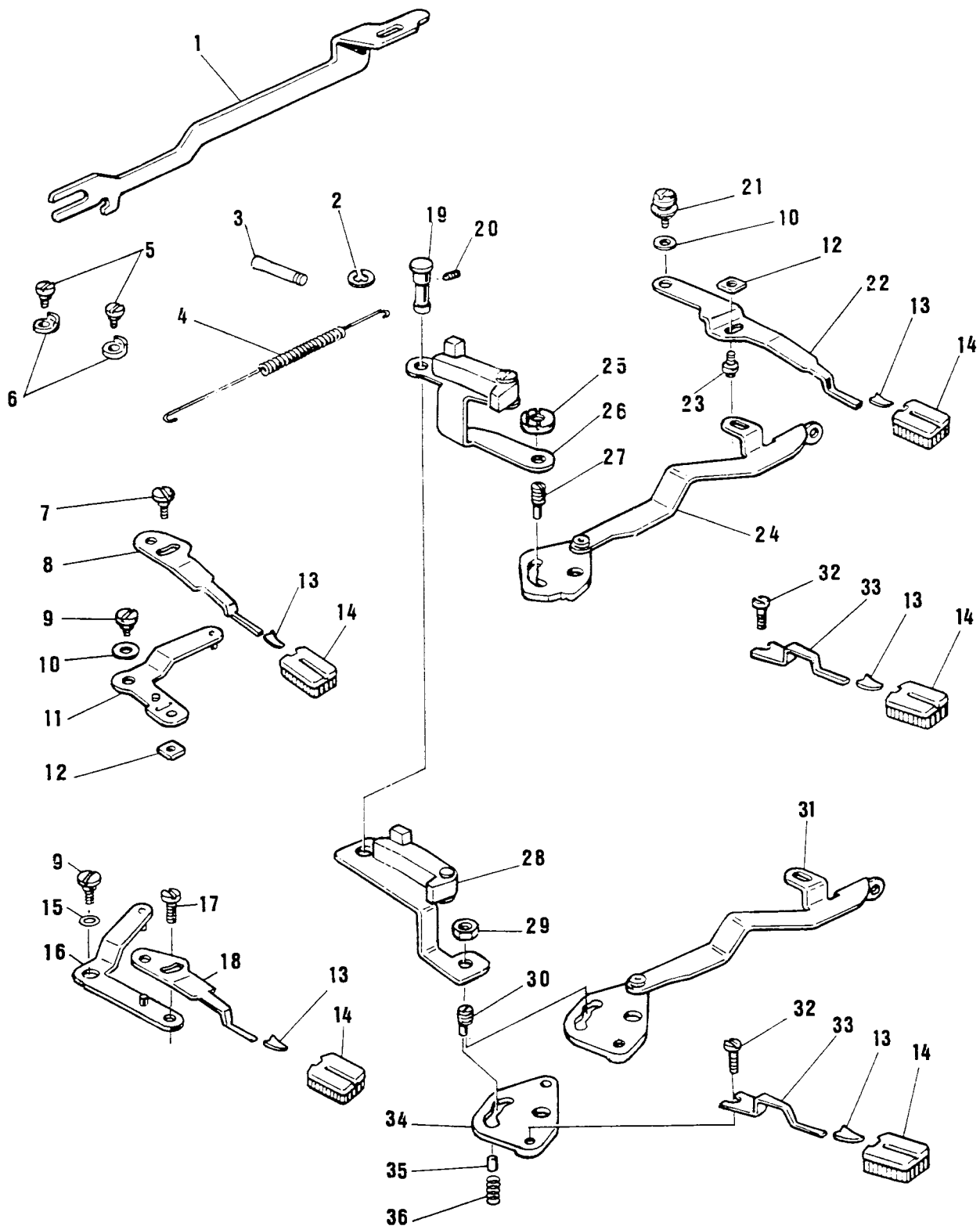
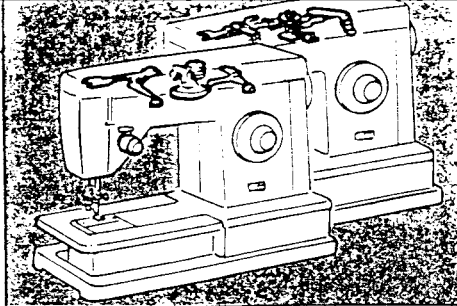
3

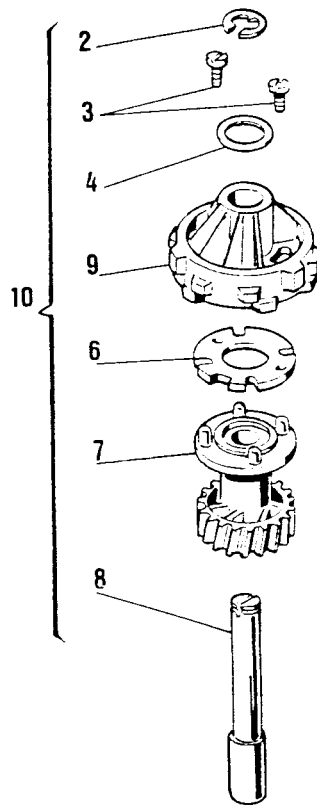
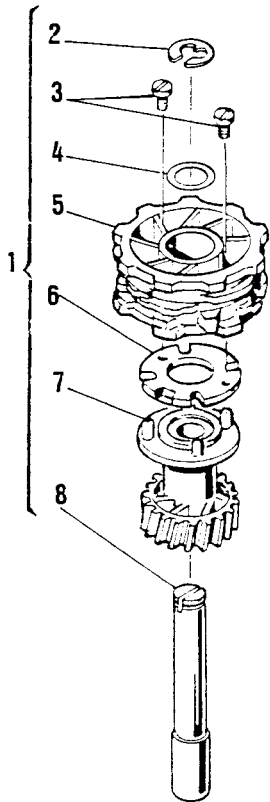
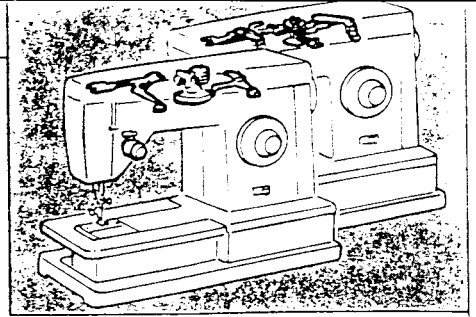
| REF. N. | PART. N° | PART DESCRIPTION | 8605 | 8505 | 8518 | 8618 | 8614 | 8610 | 8606 | 8602 | 8502 |
|---------|-----------|----------------------------------|------|------|------|------|------|------|------|------|------|
| 1 | 37977 | Rotating hook drive belt | | ● | | | | | | | ● |
| 2 | 446736 | Driving belt tension adjuster | | ● | | | | | | | ● |
| 3 | 446737 | Friction washer | | ● | | | | | | | ● |
| 4 | 139909 | Adjuster screw | | ● | | | | | | | ● |
| 5 | 37231 | Arm shaft (upright) | | ● | | | | | | | ● |
| 6 | 446822 | Belt drive pulley cpl. | | ● | | | | | | | ● |
| 7 | 141803 | Set screw | | ● | | | | | | | ● |
| 8 | 446716 | Feed bar centre (2) | | ● | | | | | | | ● |
| 9 | 179880 | Feed lifting rock shaft centre | | ● | | | | | | | ● |
| 10 | 141925 | Set screw (4) | | ● | | | | | | | ● |
| 11 | 141938 | Set screw (2) | | ● | | | | | | | ● |
| 12 | 446717 | Feed rock shaft | | ● | | | | | | | ● |
| 13 | 37229 | Bevel gear and feed lifting cpl. | | ● | | | | | | | ● |
| 14 | 141918 | Set screw | | ● | | | | | | | ● |
| 15 | 37288 | Connecting rod | | ● | | | | | | | ● |
| 16 | 37284-001 | Retaining washer | | ● | | | | | | | ● |
| 17 | 37281 | Feed cam cpl. | | ● | | | | | | | ● |
| 18 | 37283 | Feed forked connection | | ● | | | | | | | ● |
| 19 | 319820 | Slide block | | ● | | | | | | | ● |
| 20 | 141920 | Feed dog screw (2) | | ● | | | | | | | ● |
| 21 | 447574 | Feed dog | | ● | | | | | | | ● |
| 22 | 37280 | Feed bar | | ● | | | | | | | ● |
| 23 | 37286 | Feed lifting rock shaft | | ● | | | | | | | ● |
| 24 | 53648 | Nut | | ● | | | | | | | ● |
| 25 | 141805 | Hinge screw (eccentric) | | ● | | | | | | | ● |

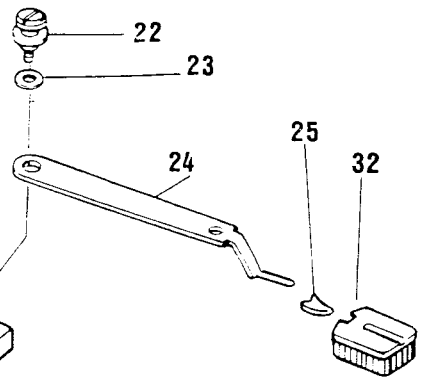
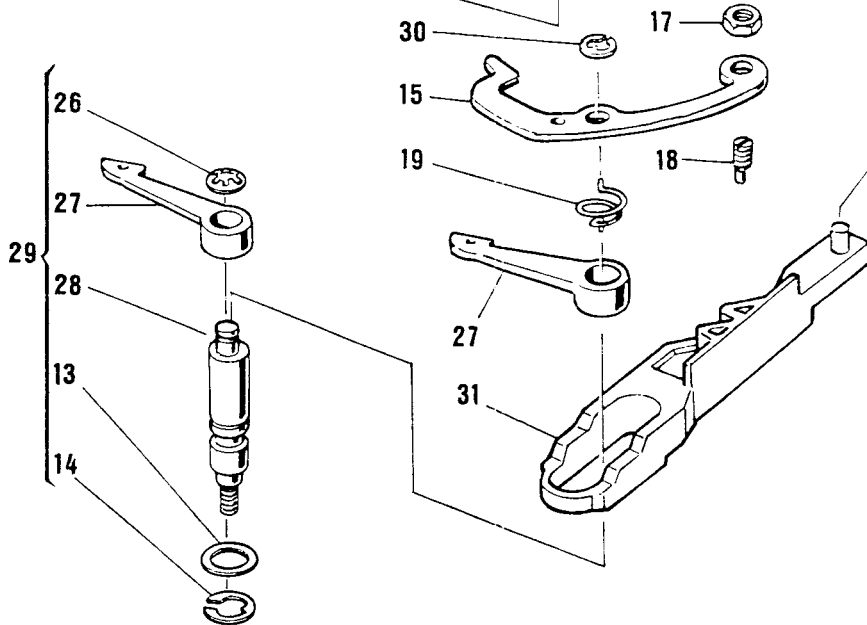
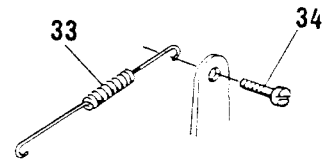
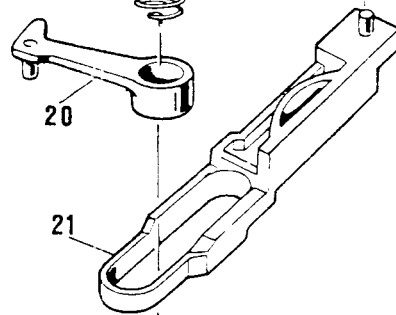
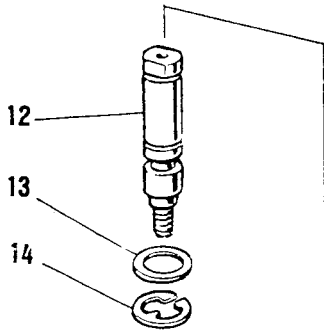
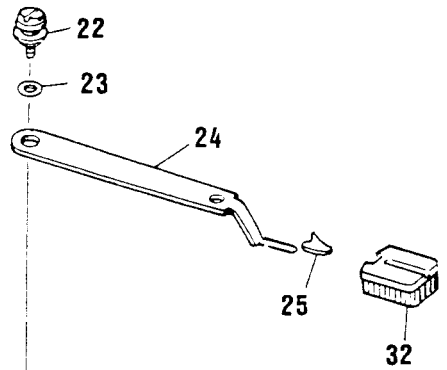
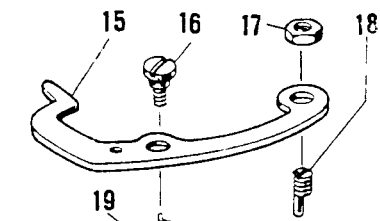
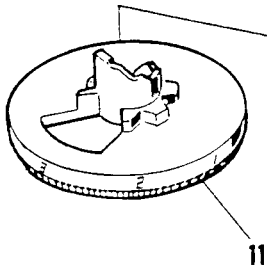
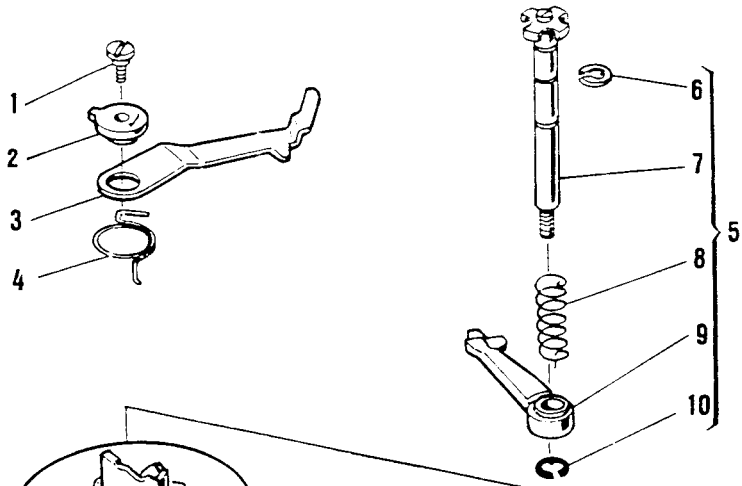
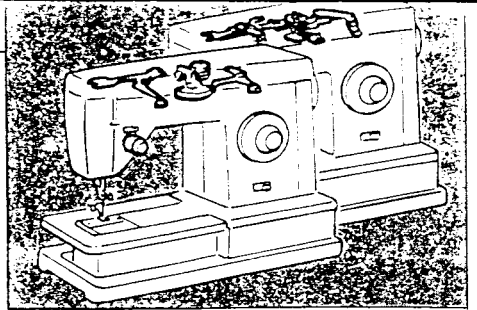






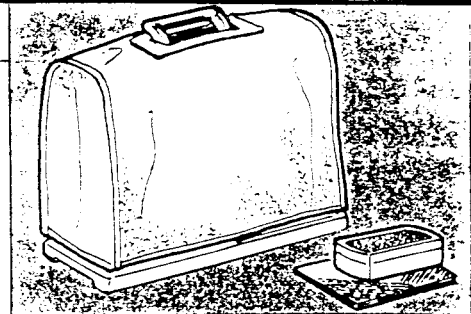






LIST OF PARTS FOR MACHINES 8500/8600 SERIES

| REF. N. | PART. N° | PART DESCRIPTION | 8505 | 8505 | 8518 | 8618 | 8614 | 8610 | 8606 | 8602 | 8502 |
|---------|------------|--|------|------|------|------|------|------|------|------|------|
| 1 | 514733-451 | Bushing screw | | | • | • | • | • | | | |
| 2 | 422230 | Disengaging lever bushing | | | • | • | • | • | | | |
| 3 | 421901 | Disengaging lever | | | • | • | • | • | | | |
| 4 | 421902 | Disengaging lever spring | | | • | • | • | • | | | |
| 5 | 447866-451 | Disc follower cpl. | | | • | • | • | • | | | |
| | 447861-451 | Disc follower cpl. | | | | | | • | | | |
| 6 | 421912 | Crescent ring | | | | | | • | | | |
| 7 | 447862-451 | Hinge stud | | | • | • | • | | | | |
| | 447862-452 | Hinge stud | | | | | | • | | | |
| 8 | 421897 | Disc follower spring | | | • | • | • | • | | | |
| 9 | 421896 | Disc follower | | | • | • | • | • | | | |
| 10 | 511213 | Retaining ring | | | • | • | • | • | | | |
| 11 | 447752-451 | Disc selector dial | | | | | | • | | | |
| | 447752-452 | Disc selector dial | | | | | • | | | | |
| | 447754-451 | Disc selector dial | | | • | • | | | | | |
| 12 | 37268 | Disc follower stud | | | | | | | • | | |
| 13 | 37276 | Disc follower washer | • | • | | | | | • | • | • |
| 14 | 44371 | Retaining ring | • | • | | | | | • | • | • |
| 15 | 422081 | Disc follower disengaging lever | • | • | | | | | • | • | • |
| 16 | 141787 | Screw | | | | | | | • | | |
| 17 | 53641 | Nut | • | • | | | | | • | | |
| 18 | 44471 | Screw stud (eccentric) | • | • | | | | | • | | |
| 19 | 44419 | Disc follower positioning spring | • | • | | | | | • | | |
| 20 | 446610 | Disc follower | | | | | | | • | | |
| 21 | 422086 | Disc selector cam slide | | | | | | | • | | |
| 22 | 141786 | Hinge washer | • | • | | | | | • | | |
| 23 | 49204 | Friction washer | • | • | | | | | • | | |
| 24 | 422016 | Disc selector lever | • | • | | | | | • | | |
| 25 | 37244 | Disc selector control lever knob spring clip | • | • | | | | | • | | |
| 26 | 44735 | Retaining ring | | | | | | | | • | • |
| 27 | 37262 | Disc follower | • | • | | | | | | • | • |
| 28 | 422426 | Disc follower stud | • | • | | | | | | • | • |
| 29 | 422434 | Disc follower stud cpl. | | | | | | | | • | • |
| 30 | 507063 | Retaining ring | • | • | | | | | | • | • |
| 31 | 353183 | Disc selector cam slide | • | • | | | | | | | |
| 32 | 447575-452 | Selector lever knob | • | • | | | | | • | | |
| 33 | 37942 | Tension spring | • | • | | | | | | | |
| 34 | 139938 | Screw | • | • | | | | | | | |



7-10-11
13-14-15-16 } 1
17-18-19-20

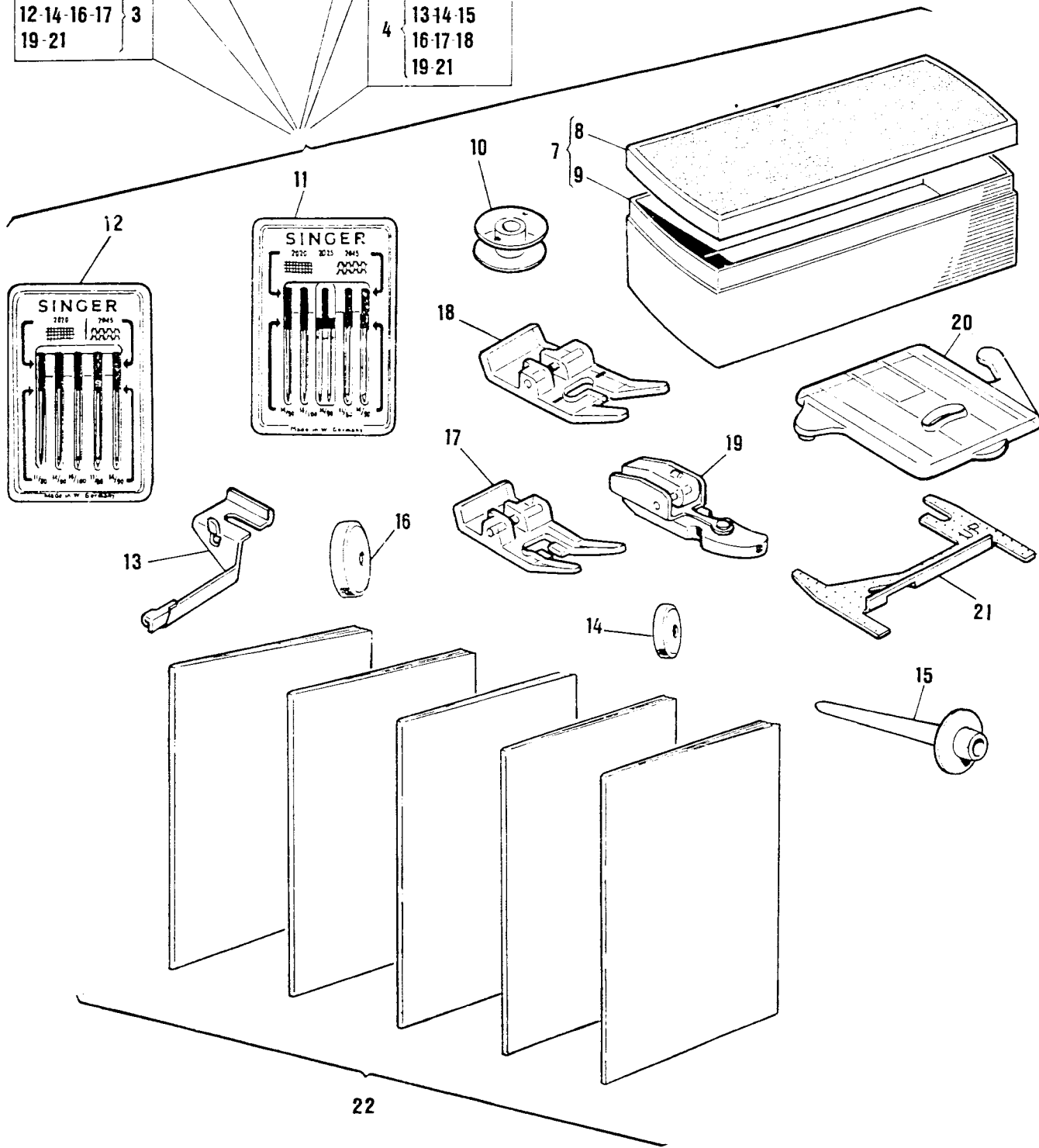
7-10-12
6 } 13-14-16-17
18-19-20

7-10
12-14-16-17 } 2
19-20

7-10-12
5 } 13-14-16-17
18-19-21

7-10
12-14-16-17 } 3
19-21

7-10-11
4 } 13-14-15
16-17-18
19-21



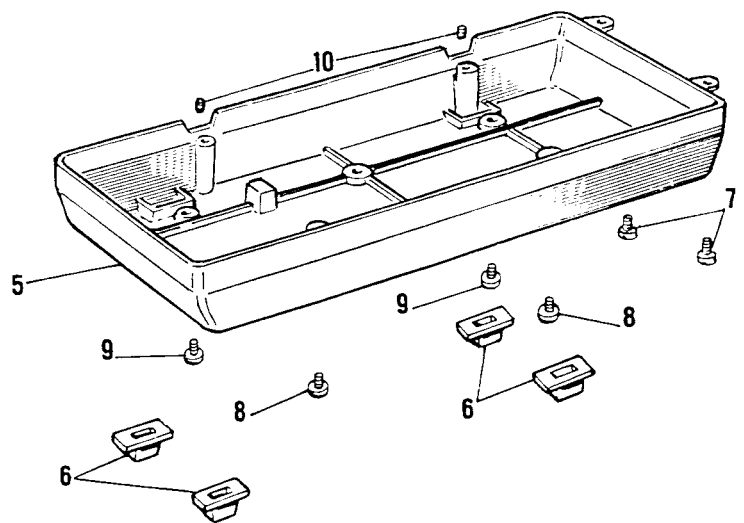
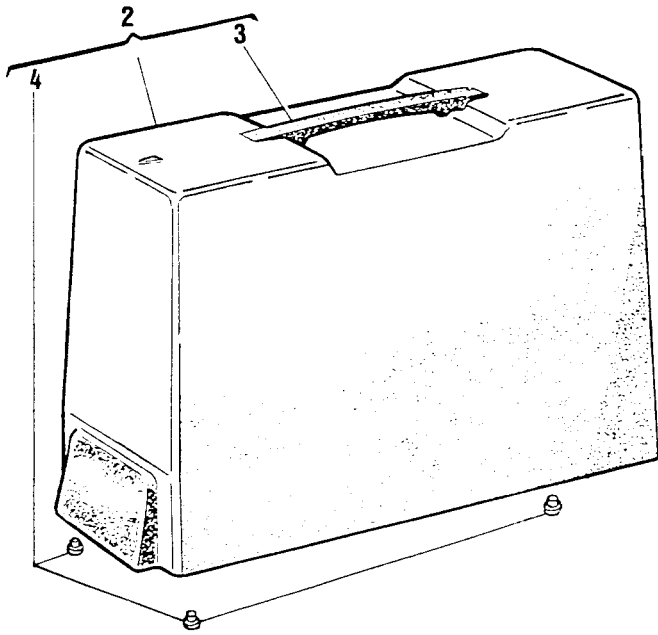
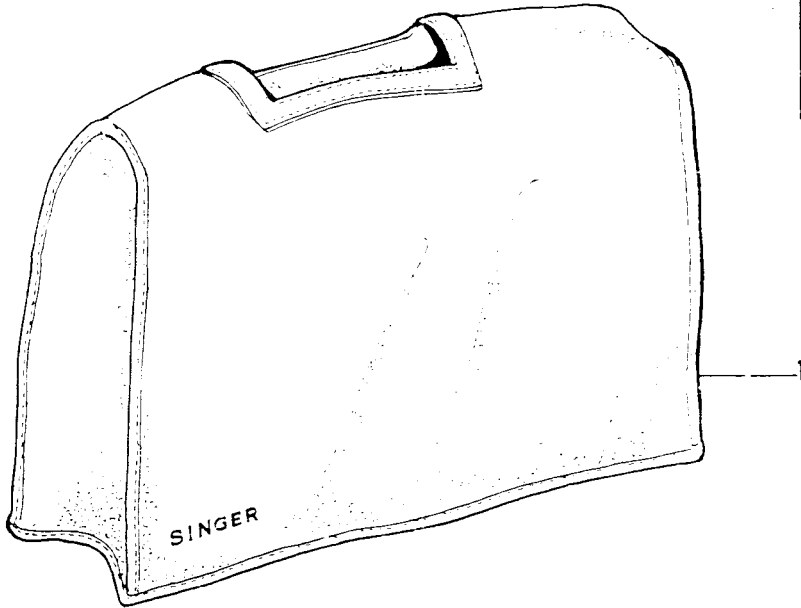
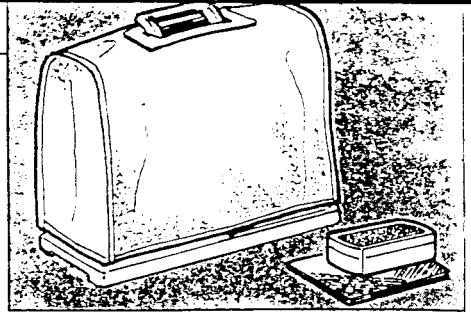
LIST OF PARTS FOR MACHINES 8500/8600 SERIES

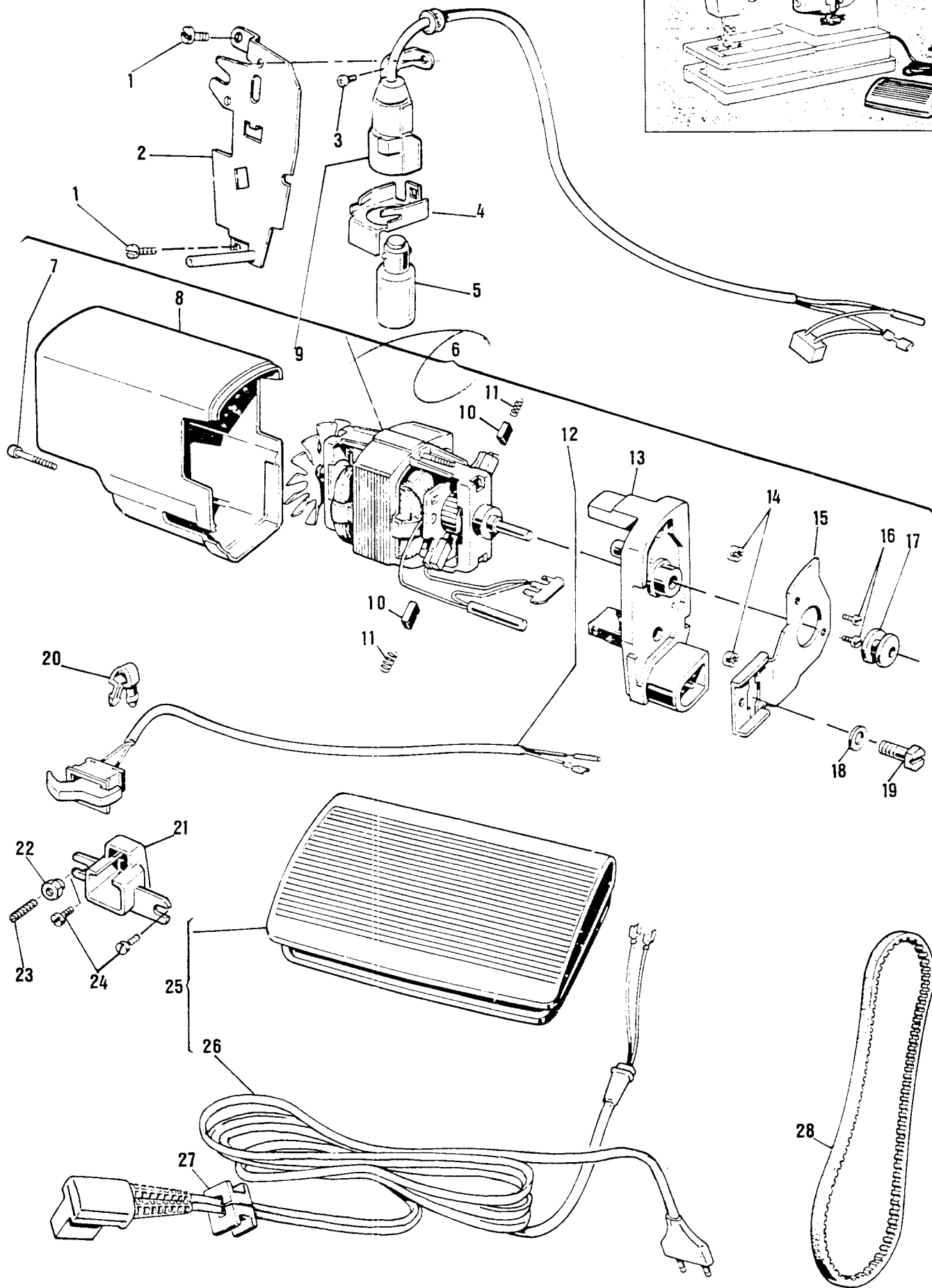
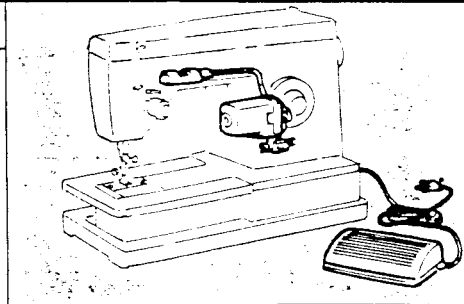
6

| REF. N. | PART. N° | PART DESCRIPTION | 8605 | 8505 | 8518 | 8618 | 8614 | 8610 | 8606 | 8602 | 8502 |
|---------|------------|--|------|------|------|------|------|------|------|------|------|
| 1 | 447763-451 | Attachment set cpl. | | | | • | • | • | • | | |
| 2 | 447763-452 | Attachment set cpl. | | | | | | | | • | |
| 3 | 447763-454 | Attachment set cpl. | | | | | | | | | • |
| 4 | 447763-453 | Attachment set cpl. | | | • | | | | | | |
| 5 | 447763-455 | Attachment set cpl. | | • | | | | | | | |
| 6 | 447763-456 | Attachment set cpl. | • | | | | | | | | |
| 7 | 421742-451 | Attachment box | • | • | • | • | • | • | • | • | • |
| 8 | 421743-451 | Attachment box cover | • | • | • | • | • | • | • | • | • |
| 9 | 421744-451 | Attachment box case | • | • | • | • | • | • | • | • | • |
| 10 | 172336 | Bobbins (transparent plastic) (2) | • | • | • | • | • | • | • | • | • |
| 11 | 381275 | Needle pack (plastic) | | | • | • | • | • | • | | |
| | | Containing: cat. 2020 - size 14 and 15 | | | | | | | | | |
| | | cat. 2045 - size 14 and 11 | | | | | | | | | |
| | | cat. 2025 - size 14 | | | | | | | | | |
| 12 | 103489 | Needle pack (plastic) | • | • | | | | | | • | • |
| | | Containing: cat. 2020 - size 14 and 15 | | | | | | | | | |
| | | cat. 2045 - size 14 and 11 | | | | | | | | | |
| 13 | 381213 | Blindstitch guide | • | • | • | • | • | • | • | | |
| 14 | 312815-452 | Small thread spool cap | • | • | • | • | • | • | • | • | • |
| 15 | 422250-451 | Spool pin adaptor (for twin needle sewing) | | | • | • | • | • | • | | |
| 16 | 507664-460 | Large thread spool cap | • | • | • | • | • | • | • | • | • |
| 17 | 446492-451 | Special purpose foot | • | • | • | • | • | • | • | • | • |
| 18 | 161927-001 | Snap-on buttonhole foot | • | • | • | • | • | • | • | | |
| 19 | 507836 | Snap-on zipper foot | • | • | • | • | • | • | • | • | • |
| 20 | 381459-001 | Snap-in feed cover plate | • | | | • | • | • | • | • | |
| 21 | 161894 | Needle plate raising shim | | • | • | | | | | | • |
| 22 | Form n° | Instruction books (refer to table below) | • | • | • | • | • | • | • | • | • |

22) Instruction books: languages/form

| Model | French - Spanish - English | Italian - German - Dutch | Danish - Finnish - Swedish |
|-----------|----------------------------|--------------------------|----------------------------|
| 8502/8602 | Form 3041 | Form 3042 | Form 3043 |
| 8505/8605 | Form 3044 | Form 3045 | Form 3049 |
| 8606 | Form 3046 | Form 3047 | Form 3048 |
| 8610/8614 | Form 3051 | Form 3052 | Form 3053 |
| 8518/8618 | Form 3056 | Form 3057 | Form 3058 |





LIST OF PARTS FOR MACHINES 8500/8600 SERIES

| REF. N | PART. N° | PART DESCRIPTION | 8505 | 8505 | 8518 | 8618 | 8614 | 8610 | 8606 | 8602 | 8502 |
|--------|------------|---|------|------|------|------|------|------|------|------|------|
| 1 | 141913 | Bracket screw | • | • | • | • | • | • | • | • | • |
| 2 | 422213 | Pressure regulating knob bracket | • | • | • | • | • | • | • | • | • |
| 3 | 421712-451 | Light screw | • | • | • | • | • | • | • | • | • |
| 4 | 421967 | Heat sink | • | • | • | • | • | • | • | • | • |
| 5 | 194120-015 | Bulb 220 V - 15W | • | • | • | • | • | • | • | • | • |
| | 194120-016 | Bulb 120V - 15W | • | • | • | • | • | • | • | • | • |
| | 194120-017 | Bulb 240V - 15W | • | • | • | • | • | • | • | • | • |
| 6• | 605079-200 | Motor cpl. - 220V (For Europe) | • | • | • | • | • | • | • | • | • |
| | 605079-202 | Motor cpl. - 240V (UK - Australia) | • | • | • | • | • | • | • | • | • |
| | 605079-208 | Motor cpl. - 120V (USA - Canada) | • | • | • | • | • | • | • | • | • |
| | 988138-221 | Motor cpl. - 220V (Europe) | | | | • | | | | | |
| | 988138-222 | Motor cpl. - 240V (UK - Australia) | | | | • | | | | | |
| | 988138-227 | Motor cpl. - 120V (Canada - USA) | | | | • | | | | | |
| 7• | 604016-001 | Dust cover screw | • | • | • | • | • | • | • | • | • |
| 8• | 988136-001 | Dust cover | • | • | • | • | • | • | • | • | • |
| 9 | 605209-012 | Light cpl. -220/240V | • | • | • | • | • | • | • | • | • |
| | 605209-011 | Light cpl. (Canada and USA) | • | • | • | • | • | • | • | • | • |
| | 605209-016 | Light cpl. -220/240V | | | | • | | | | | |
| | 605209-020 | Light cpl. (USA and Canada) | | | | • | | | | | |
| 10• | 619436-001 | Brush spring (2) | • | • | • | • | • | • | • | • | • |
| 11• | 619435-004 | Brush | • | • | • | • | • | • | • | • | • |
| 12• | 603985-100 | Switch cpl. | • | • | • | • | • | • | • | • | • |
| | 603985-102 | Switch cpl. (USA and Canada) | • | • | • | • | • | • | • | • | • |
| | 603985-120 | Switch cpl. | | | | • | | | | | |
| | 603985-125 | Switch cpl. (USA and Canada) | | | | • | | | | | |
| 13• | 988140-001 | End housing | • | • | • | • | • | • | • | • | • |
| | 988140-002 | End housing | | | | • | | | | | |
| 14• | 603907-001 | Nut (2) | • | • | • | • | • | • | • | • | • |
| 15• | 604233-001 | Mounting bracket | • | • | • | • | • | • | • | • | • |
| 16• | 603956-001 | Tapping screw | • | • | • | • | • | • | • | • | • |
| 17• | 988176-001 | Pulley | • | • | • | • | • | • | • | • | • |
| 18 | 604018-002 | Washer | • | • | • | • | • | • | • | • | • |
| 19 | 604020-001 | Screw | • | • | • | • | • | • | • | • | • |
| 20 | 352745 | Clip | • | • | • | • | • | • | • | • | • |
| 21 | 604102-001 | Switch enclosure | • | • | • | • | • | • | • | • | • |
| 22 | 514732-451 | Nut | • | | | • | • | • | • | • | • |
| 23 | 514731 | Screw | • | | | • | • | • | • | • | • |
| 24 | 352449 | Screw (1) | • | | | • | • | • | • | • | • |
| | 352449 | Screw (2) | | • | • | | | | | | • |
| 25• | 988274-051 | Foot controller - 220V | • | • | • | • | • | • | • | • | • |
| | 988274-055 | Foot controller - 240V (U.K.) | • | • | • | • | • | • | • | • | • |
| | 988274-057 | Foot controller - 240V (Australia only) | • | • | • | • | • | • | • | • | • |
| | 988274-090 | Foot controller - 120V (USA and Canada) | • | • | • | • | • | • | • | • | • |
| | 988275-021 | Foot controller - 220V | | | | • | | | | | |
| | 988275-024 | Foot controller - 240V (U.K.) | | | | • | | | | | |
| | 988275-026 | Foot controller - 240V (Australia only) | | | | • | | | | | |
| | 988275-031 | Foot controller - 120V (USA and Canada) - with cord | | | | • | | | | | |
| 26• | 604874-025 | Cord cpl. - 220V | • | • | • | • | • | • | • | • | • |
| | 604874-017 | Cord cpl. - 240V | • | • | • | • | • | • | • | • | • |
| | 604874-024 | Cord cpl. - 240V (Australia only) | • | • | • | • | • | • | • | • | • |
| | 604874-023 | Cord cpl. - 120V (Canada and USA) | • | • | • | • | • | • | • | • | • |
| | 604654-009 | Cord cpl. - 240V (Australia only) | | | | • | | | | | |
| | 604654-010 | Cord cpl. - 220V | | | | • | | | | | |
| | 604654-011 | Cord cpl. - 240V | | | | • | | | | | |
| | 604654-016 | Cord cpl. - 120V (Canada and USA) | | | | • | | | | | |
| 27 | 352584-452 | Grommet | | • | • | | | | | | • |
| 28 | 604136-009 | Motor belt | • | • | • | • | • | • | • | • | • |

• Parts to be ordered directly from Bonnieres

MARKETING TERRITORIES (Territory Code)

A (105/115 - 220/240 V.)

Acen
Algeria
Angola
Bahrain
Bangladesh
Benin (Dahomey)
Burma
Burundi
Cambodia
Cameroons
Cent. Africa Empire
Chad
Congo (Brazzaville)
Egyptian Arab Republic
Ethiopia
Fiji Islands
Gabon
Gambia
Ghana
Guam
Guinea
Guyana
High Volta
Hong Kong
India
Indonesia
Iran
Iraq
Ivory Coast
Jordan
Kenya
Kuwait
Laos
La Reunion
Lebanon
Liberia
Libya
Malagasy Rep.
Malawi
Malaysia
Mali
Mauritania
Mauritius
Morocco
Mozambique
Niger Repub.
Nigeria
North Yemen
Pakistan
Rhodesia
Saudi Arabia
Senegal
Sierra Leone
Singapore
South Korea
South Yemen
Sri Lanka
Sudan
Syria
Taiwan
Tangiers
Tanzania
Thailand
Togo
Tunisia
Uganda
Upper Volta
Vietnam
Zaire (Kinshasa)
Zambia

B (220V)

South Africa

C (220 or 240 V.)

New Zealand

D (240 V.)

Great Britain
(England, Scotland, Wales)
Malta

E (220 V.)

Netherlands

F (220 V.)

Austria
Belgium
Denmark
Finland
Greece
Italy
Switzerland
W. Germany

G (120 V.)

United States

H (120 V. + 220 V.)

Argentina
Bahamas
Barbados
Bermuda
Bolivia
Brazil
British Honduras
Canal Zone
Chile
Colombia
Costa Rica
Ecuador
El Salvador
French West Indies
Guatemala
Honduras Republic
Jamaica
Mexico
Neth. Antilles
Nicaragua
Panama
Paraguay
Peru
Philippines
Puerto Rico
Surinam
Trinidad & Tobago
Venezuela
Virgin Islands

West Indies
(Antigua, Dominica,
Grenada, Montserrat
St. Christopher, Nevis
Anguilla, St. Lucia,
St. Vincent, St. Kitts)

J (127/220 V.)

Belgium bi-volt
W. Germany bi-volt

K (240 V.)

Australia

L (220 V.)

Norway

M (105 V.)

Japan

N (127/220 V.)

France bi-volt
Non mandatory
countries bi-volt

O (120 V.)

Canada

P (220 V.)

Albania
France
Gibraltar
Iceland
Israel
Yugoslavia
Luxembourg
Monaco
Portugal
Spain
Turkey

Q (240 V.)

Cyprus

R (220 V.)

Sweden

S (220 V.)

Ireland