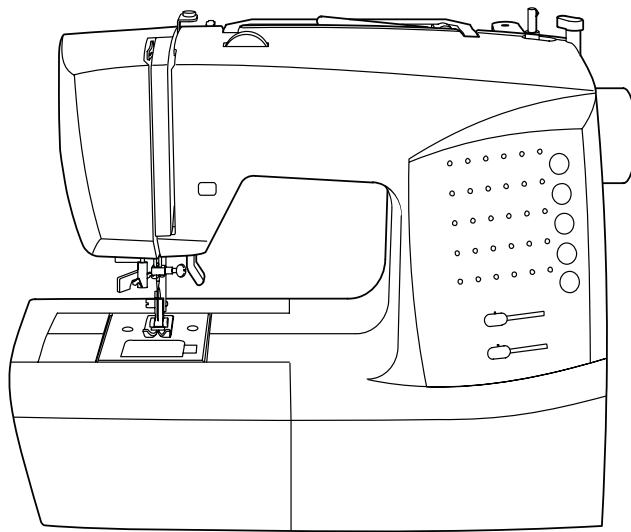


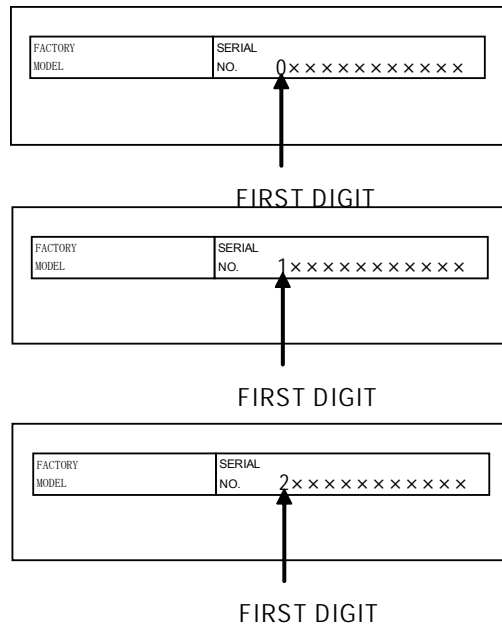


SINGER | Advance™

7468



Liste de pièces
Lista de Piezas
Parts List

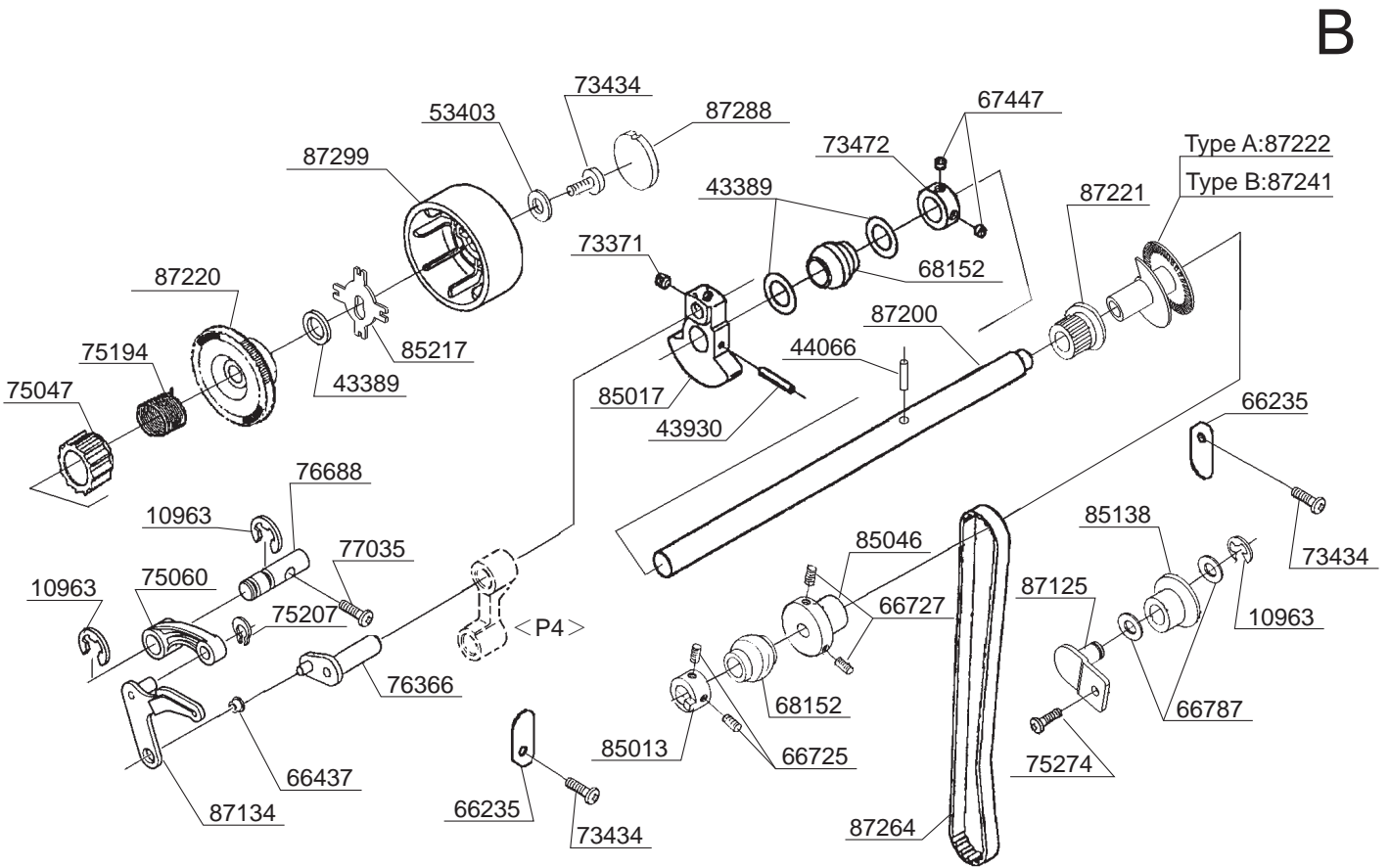
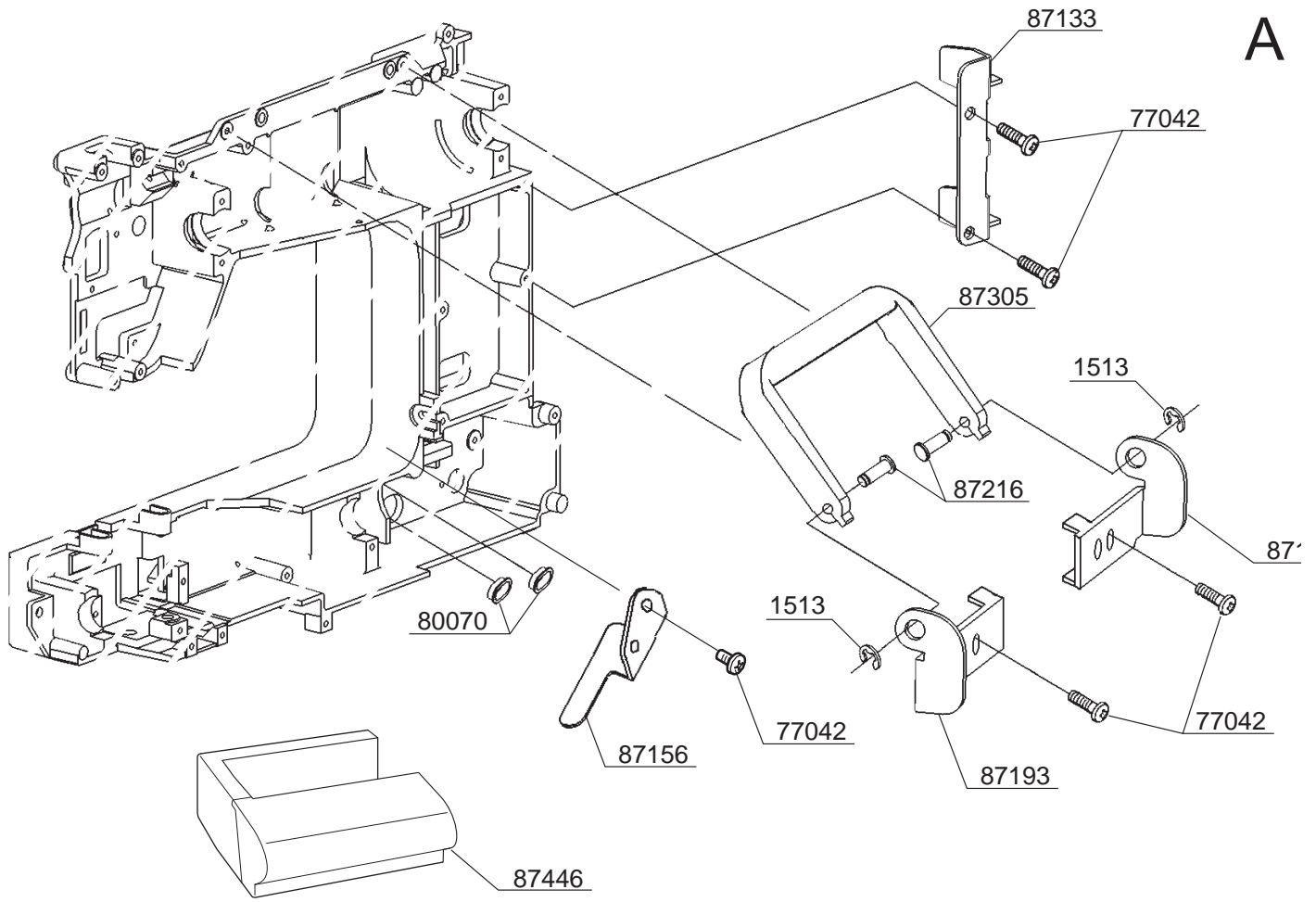


IMPORTANT:

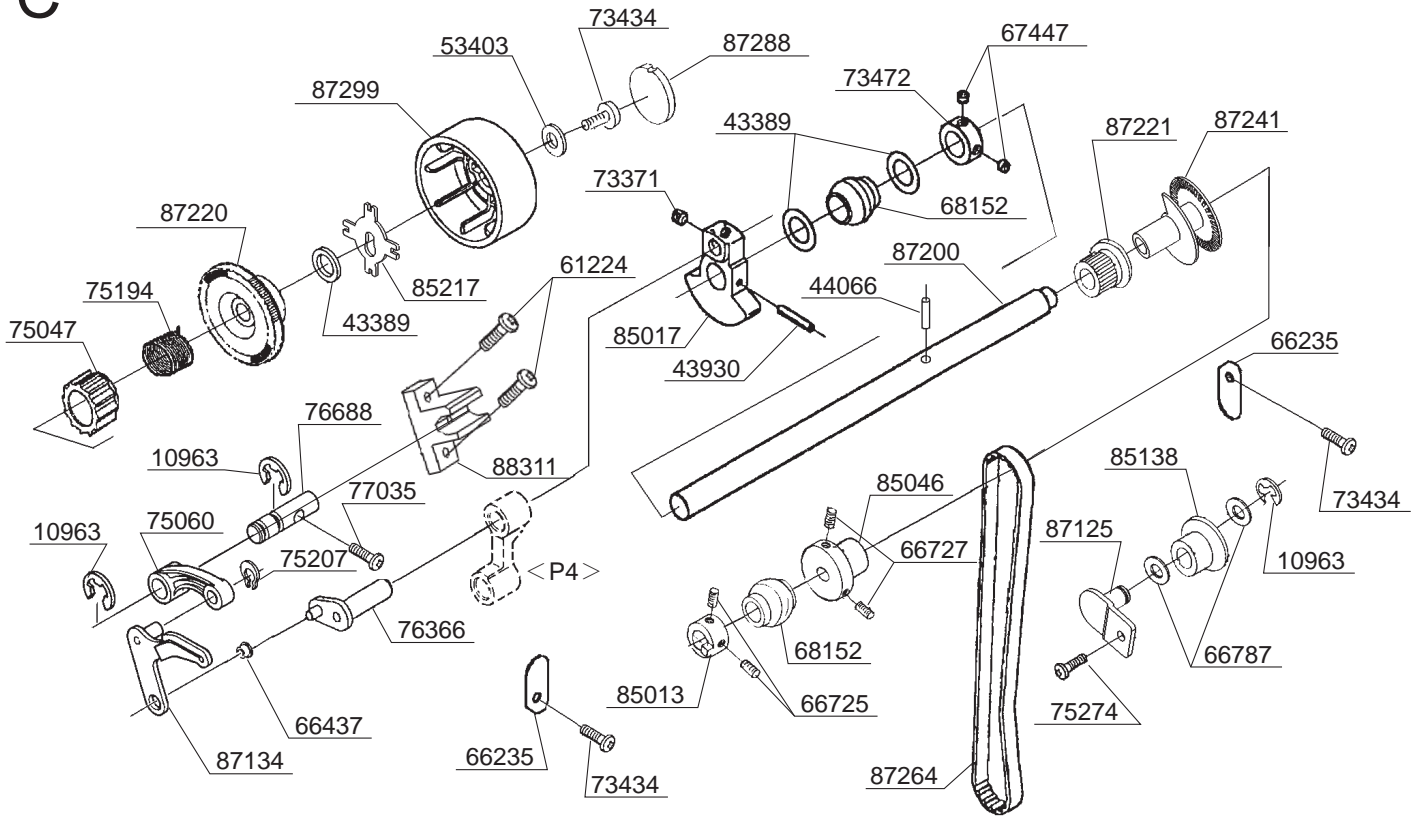
WHEN ORDERING THE PARTS ALWAYS CHECK THE SERIAL NUMBER OF THE MACHINE.

FIRST DIGIT OF THE SERIAL NUMBER MUST MATCH WITH THE LAST DIGIT OF THE FACTOR MODEL BELOW.

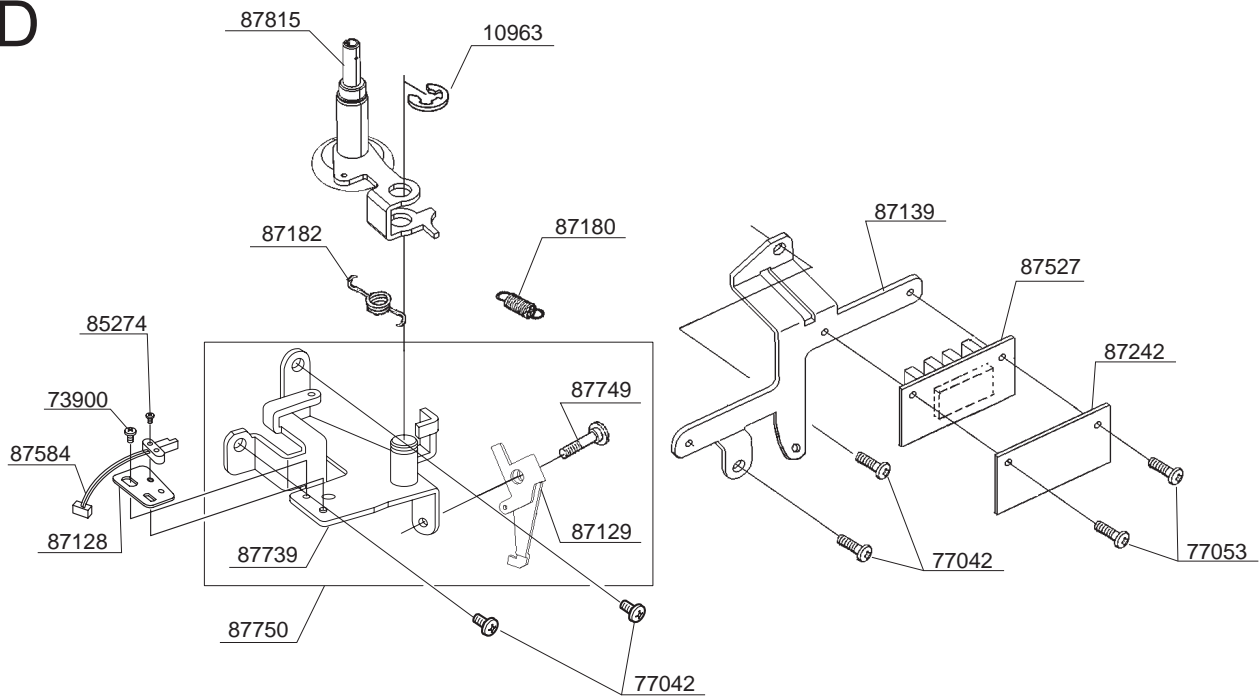
FACTORY MODEL 468x0 , 468x1 , 468x2

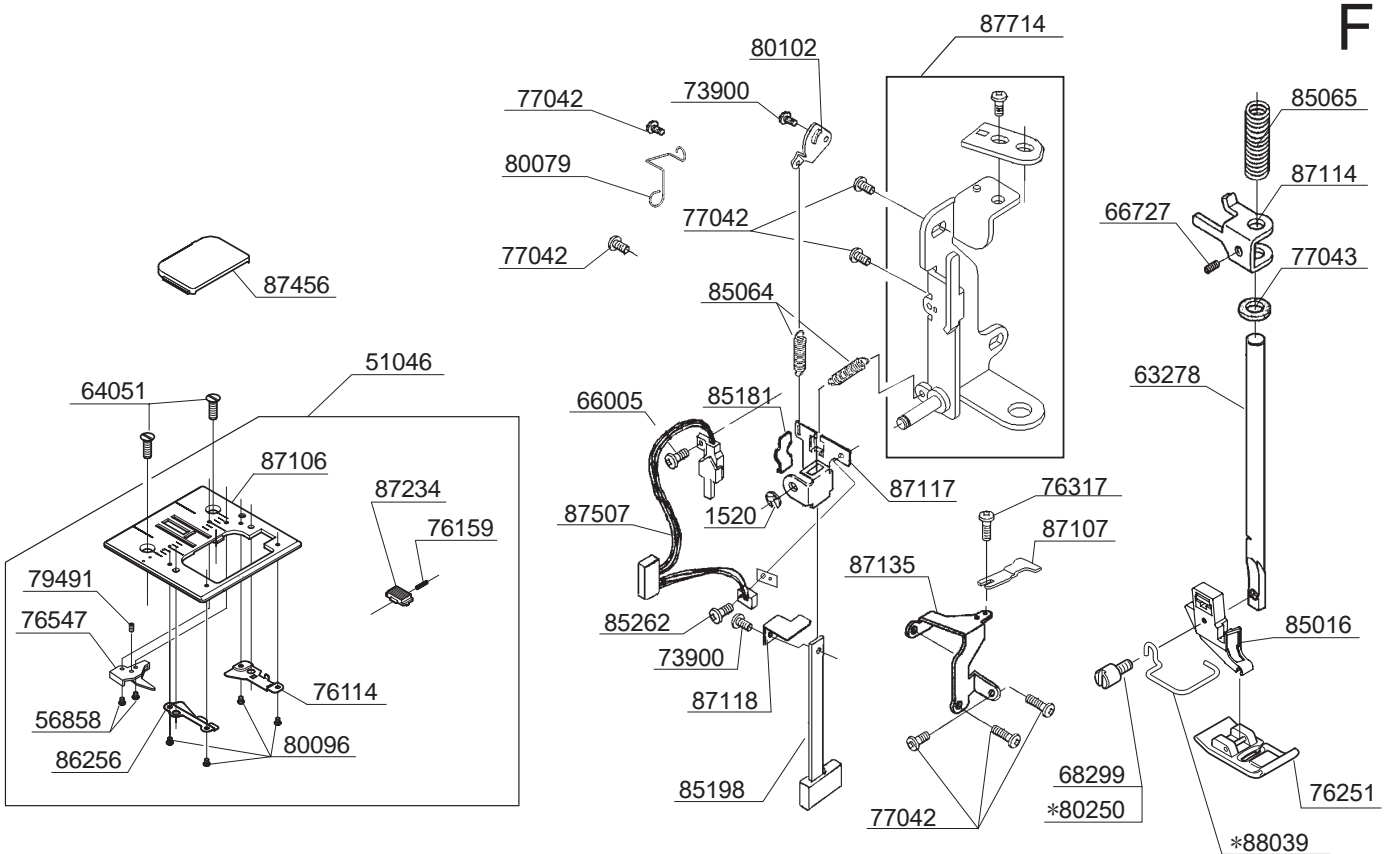
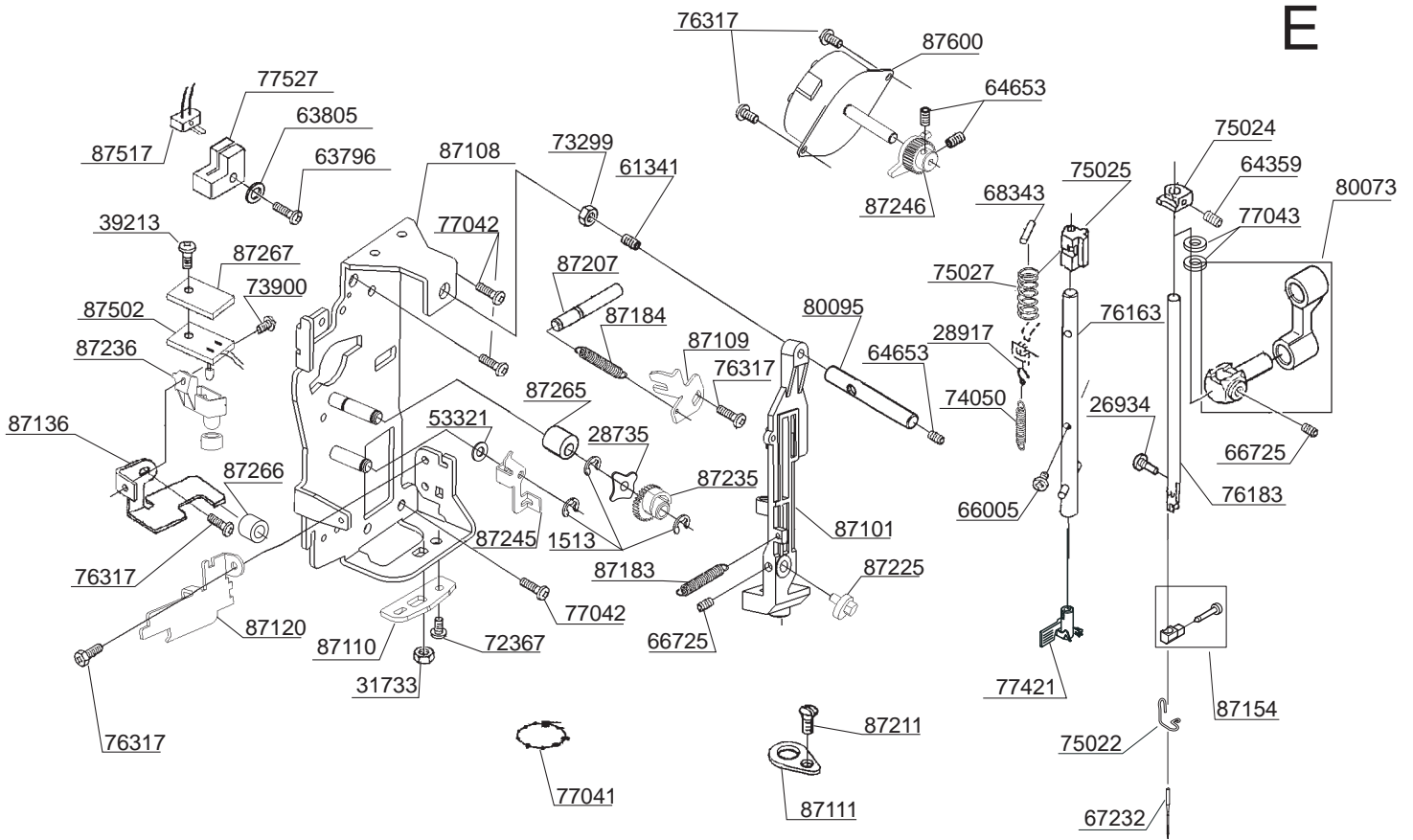


C

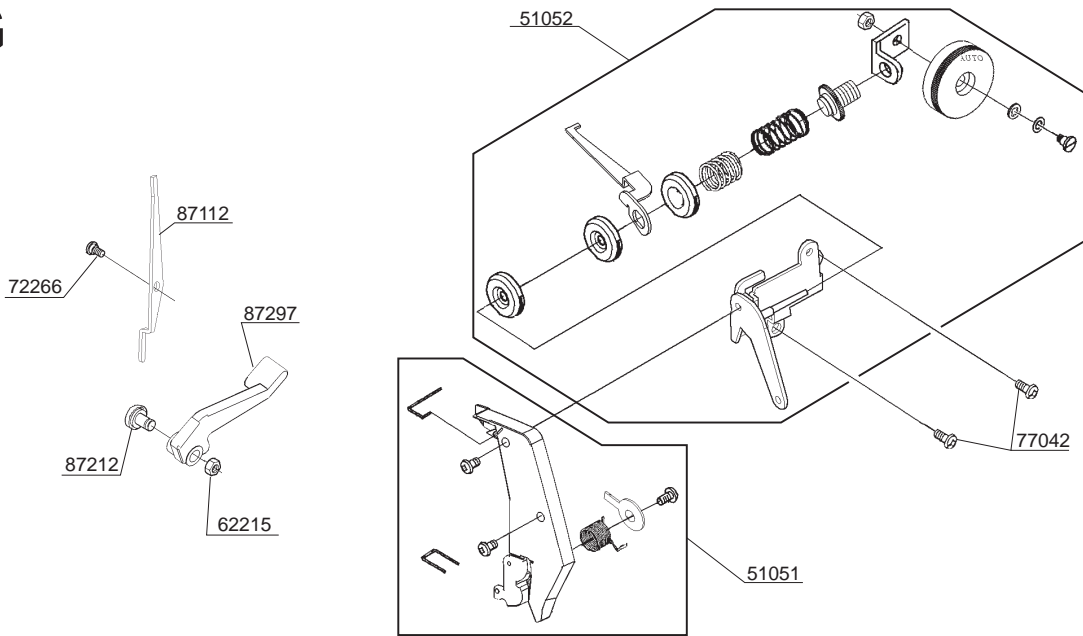


D

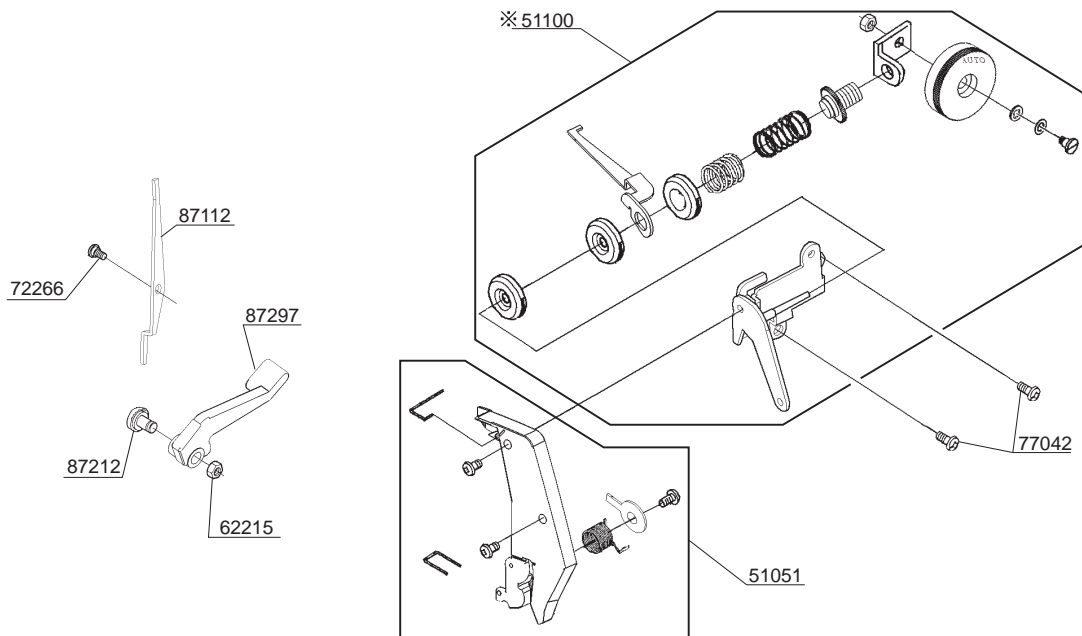


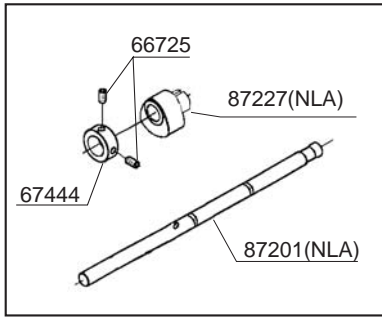


G

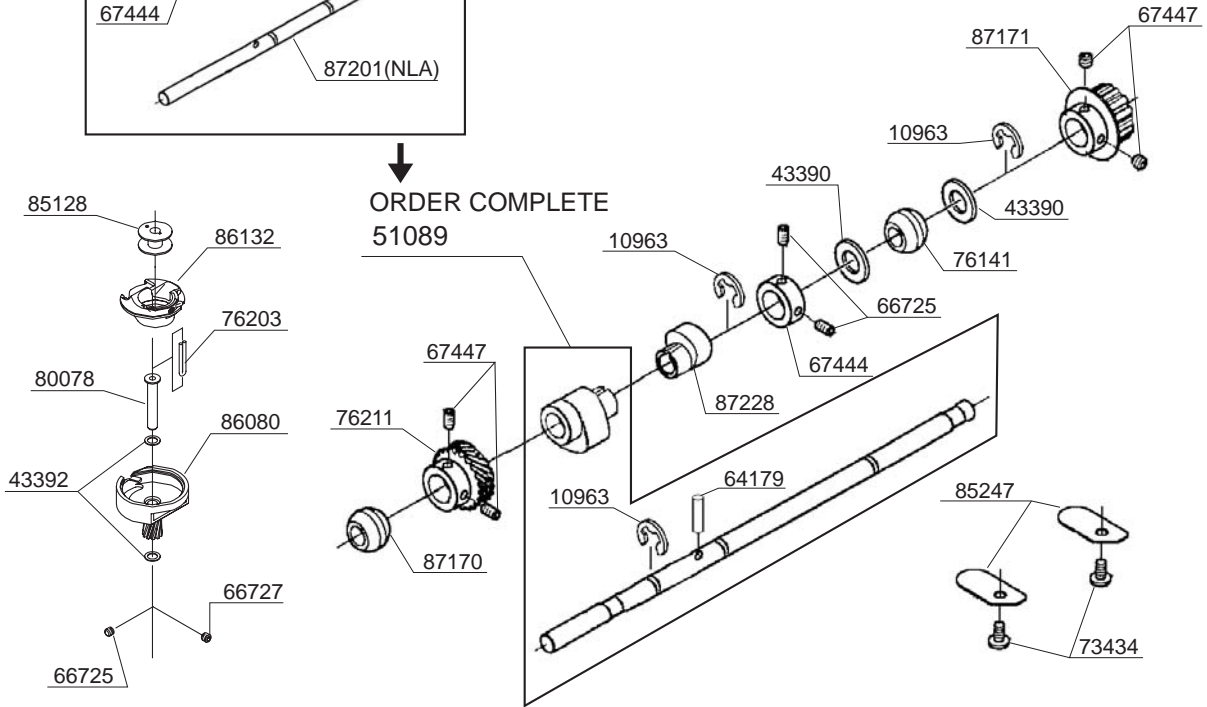


H

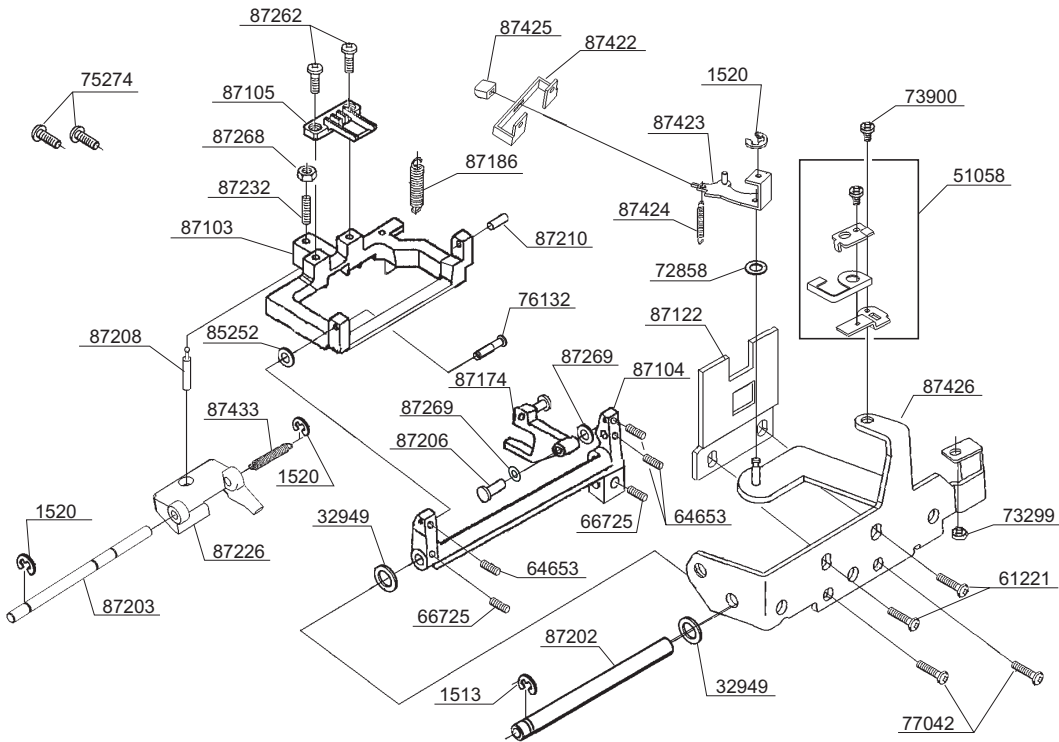




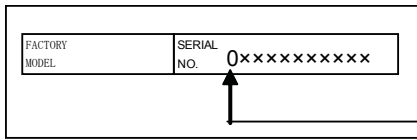
ORDER COMPLETE
51089



J

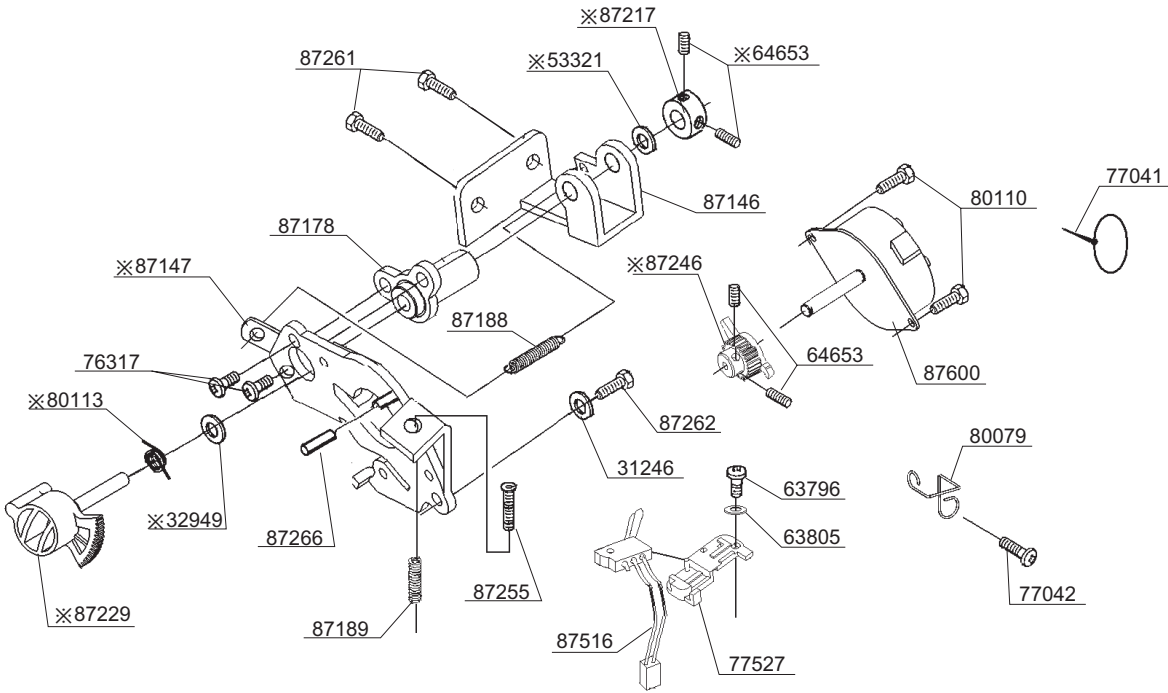


K

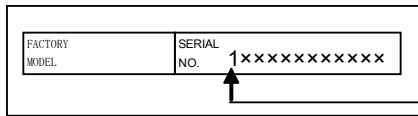


FIRST DIGIT

NOTE : PARTS NUMBER WITH ✕ MARKS ARE FOR MACHINES SERIAL NUMBERS WITH "0" AT FIRST DIGIT.

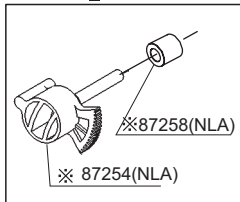
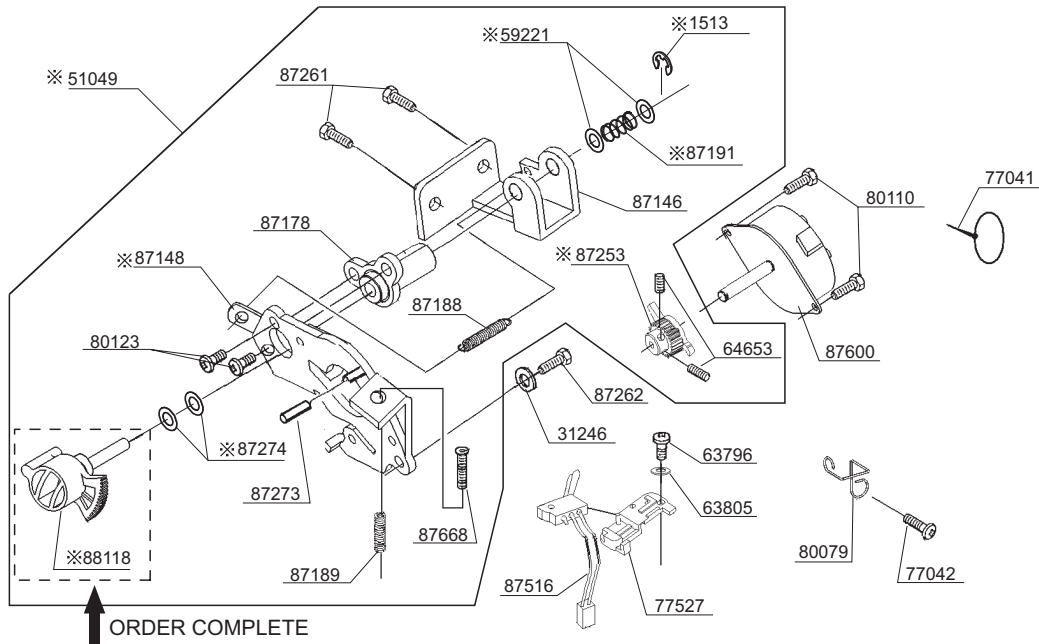


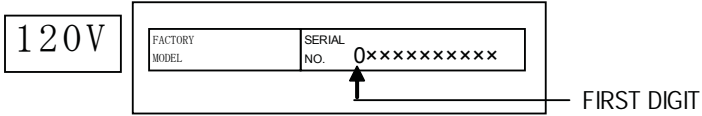
L



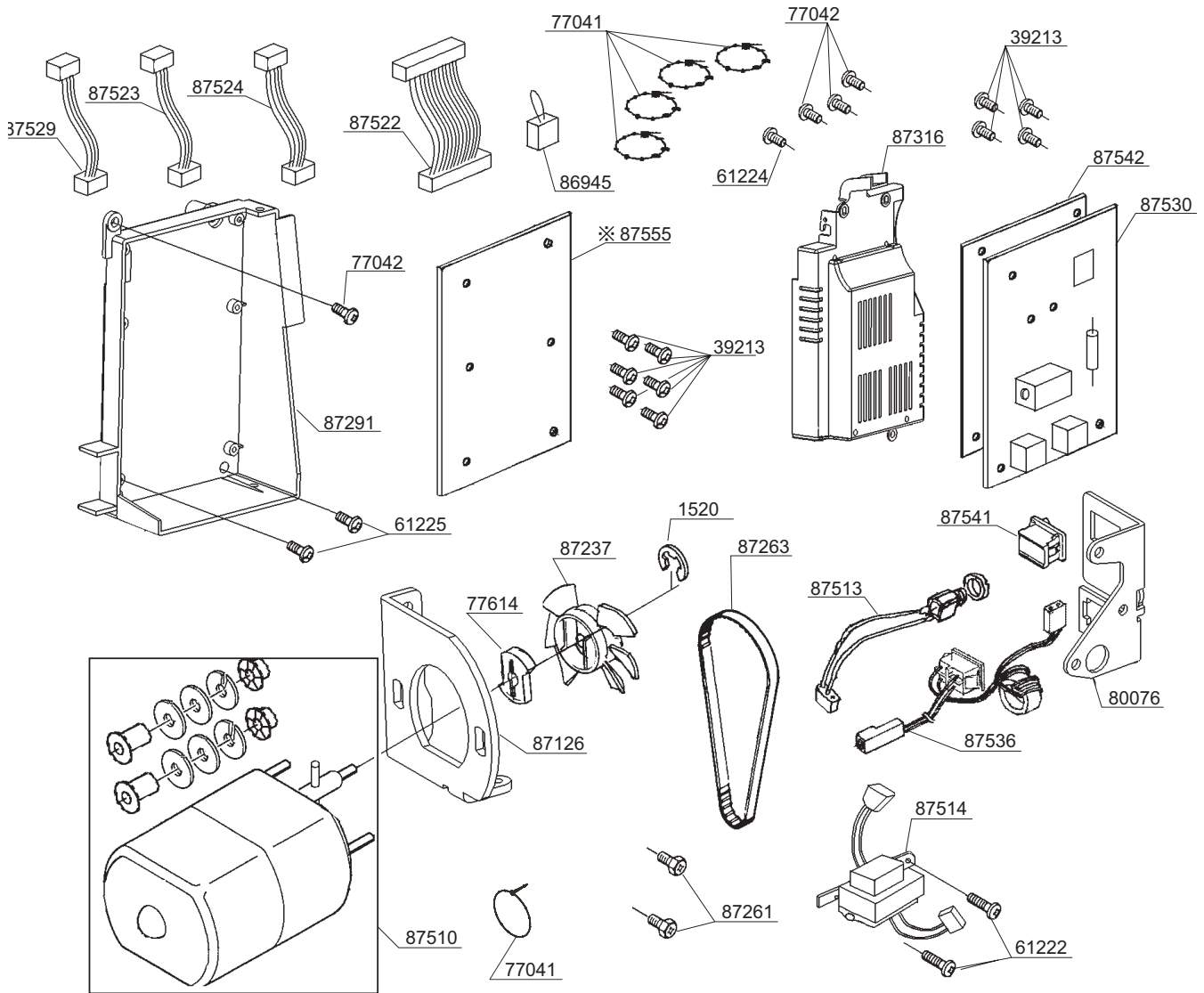
FIRST DIGIT
1 OR 2

NOTE : PARTS NUMBER WITH ✕ MARKS ARE FOR MACHINES SERIAL NUMBERS WITH "1" OR "2" AT FIRST DIGIT.



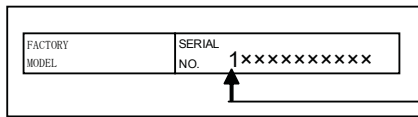


NOTE : PARTS NUMBER WITH ※ MARKS ARE FOR MACHINES SERIAL NUMBERS WITH "0" AT FIRST DIGIT.



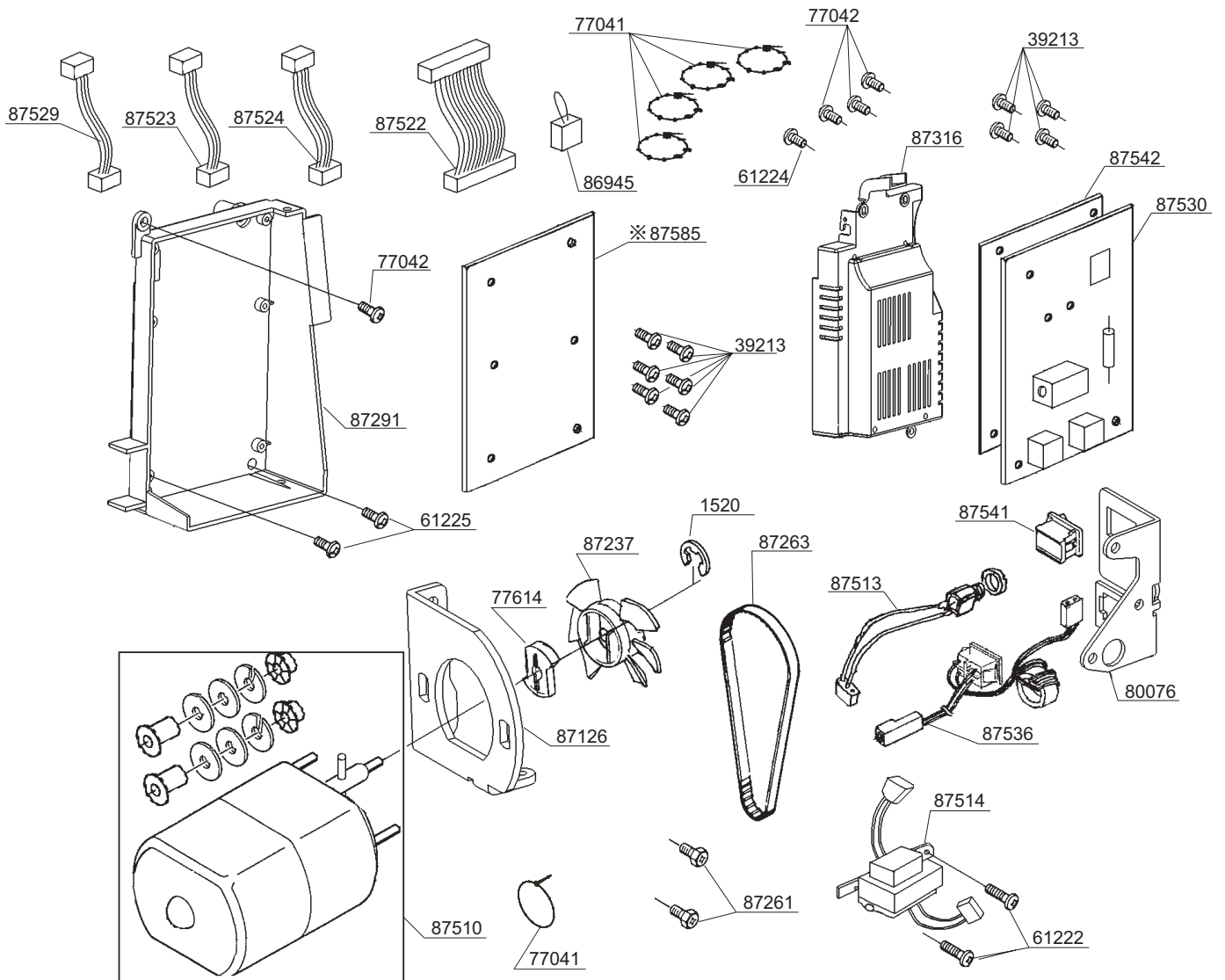
N

120V



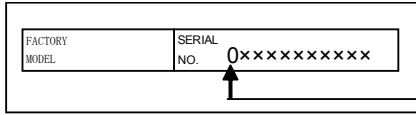
FIRST DIGIT
1 OR 2

NOTE : PARTS NUMBER WITH ✕ MARKS ARE FOR MACHINES SERIAL NUMBERS WITH "1" OR "2" AT FIRST DIGIT.



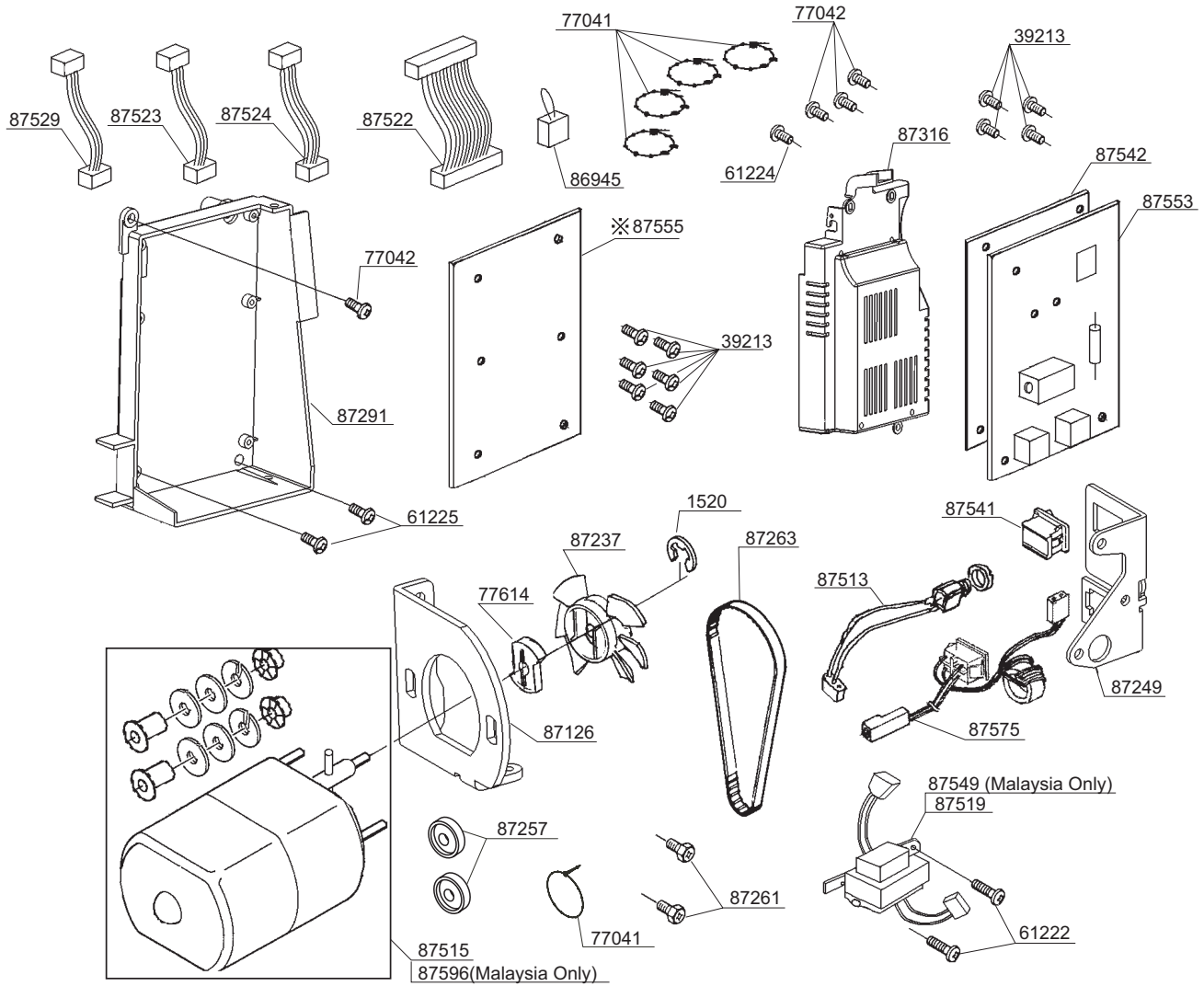


230V

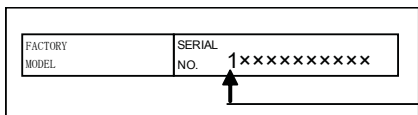


FIRST DIGIT

NOTE : PARTS NUMBER WITH ✕ MARKS ARE FOR MACHINES SERIAL NUMBERS WITH "0" AT FIRST DIGIT.

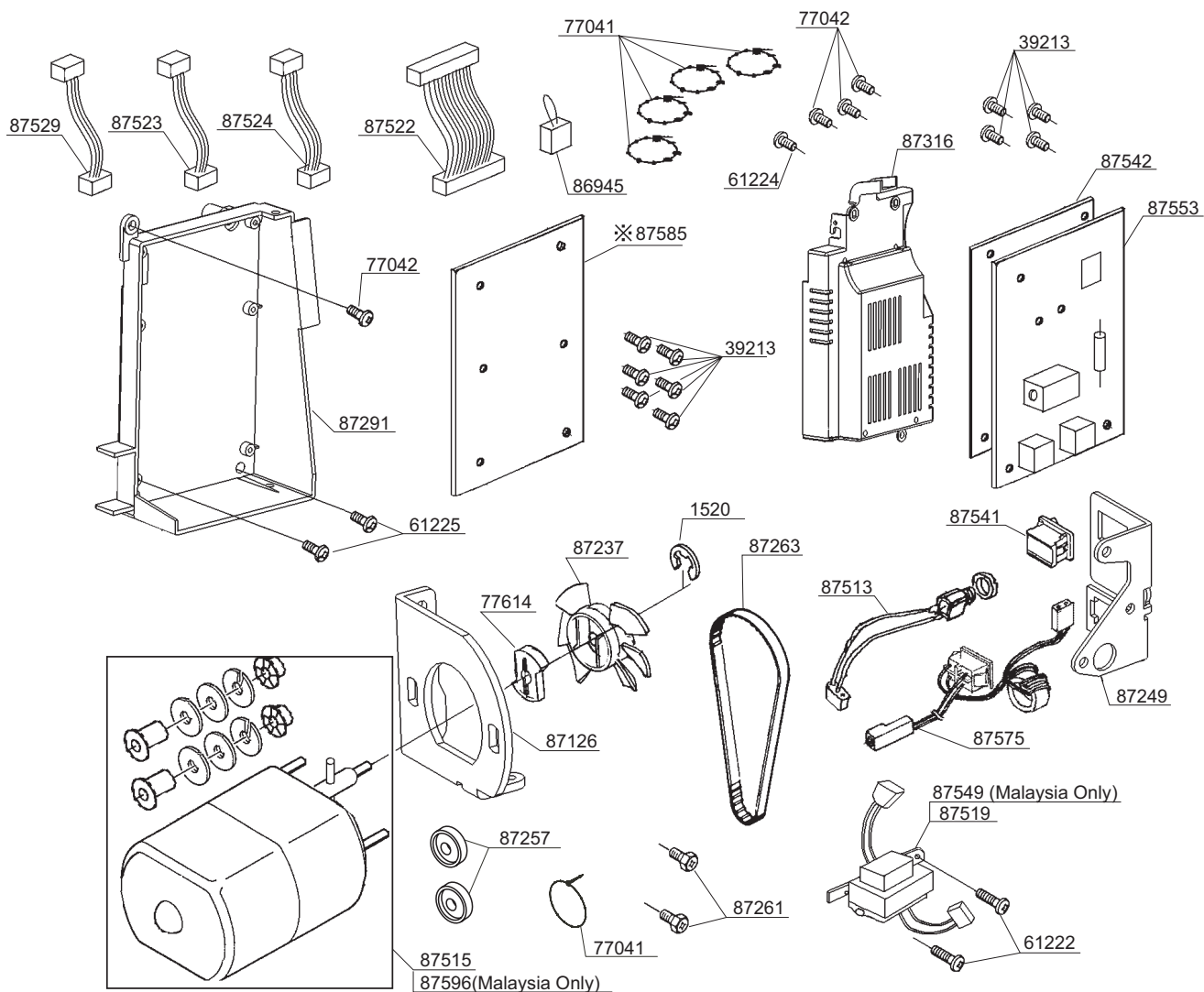


P



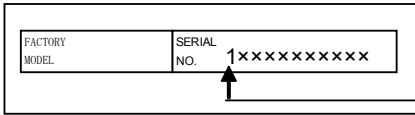
FIRST DIGIT
1 OR 2

NOTE : PARTS NUMBER WITH ✕ MARKS ARE
FOR MACHINES SERIAL NUMBERS WITH "1"OR "2"
AT FIRST DIGIT.



120V

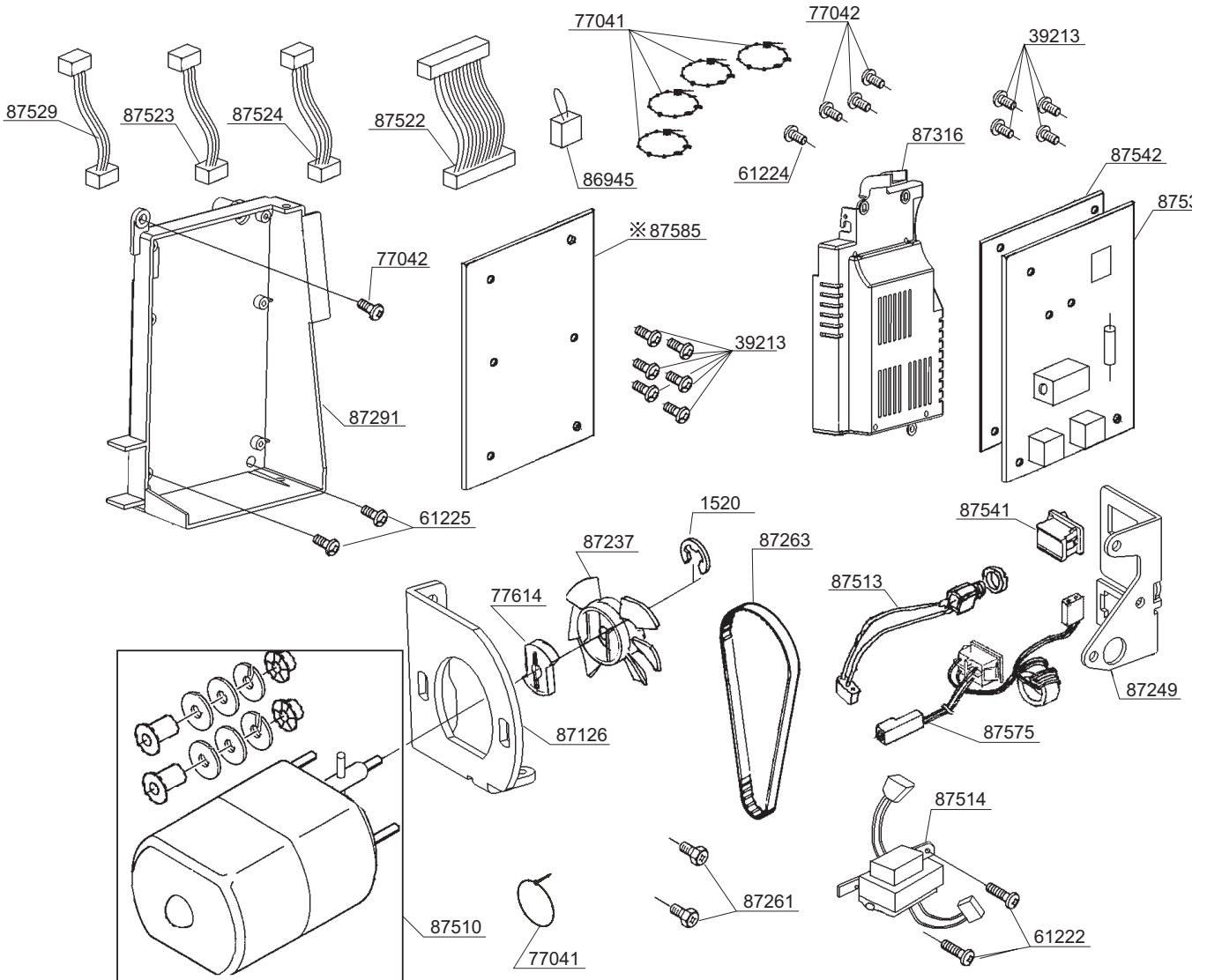
BRAZIL



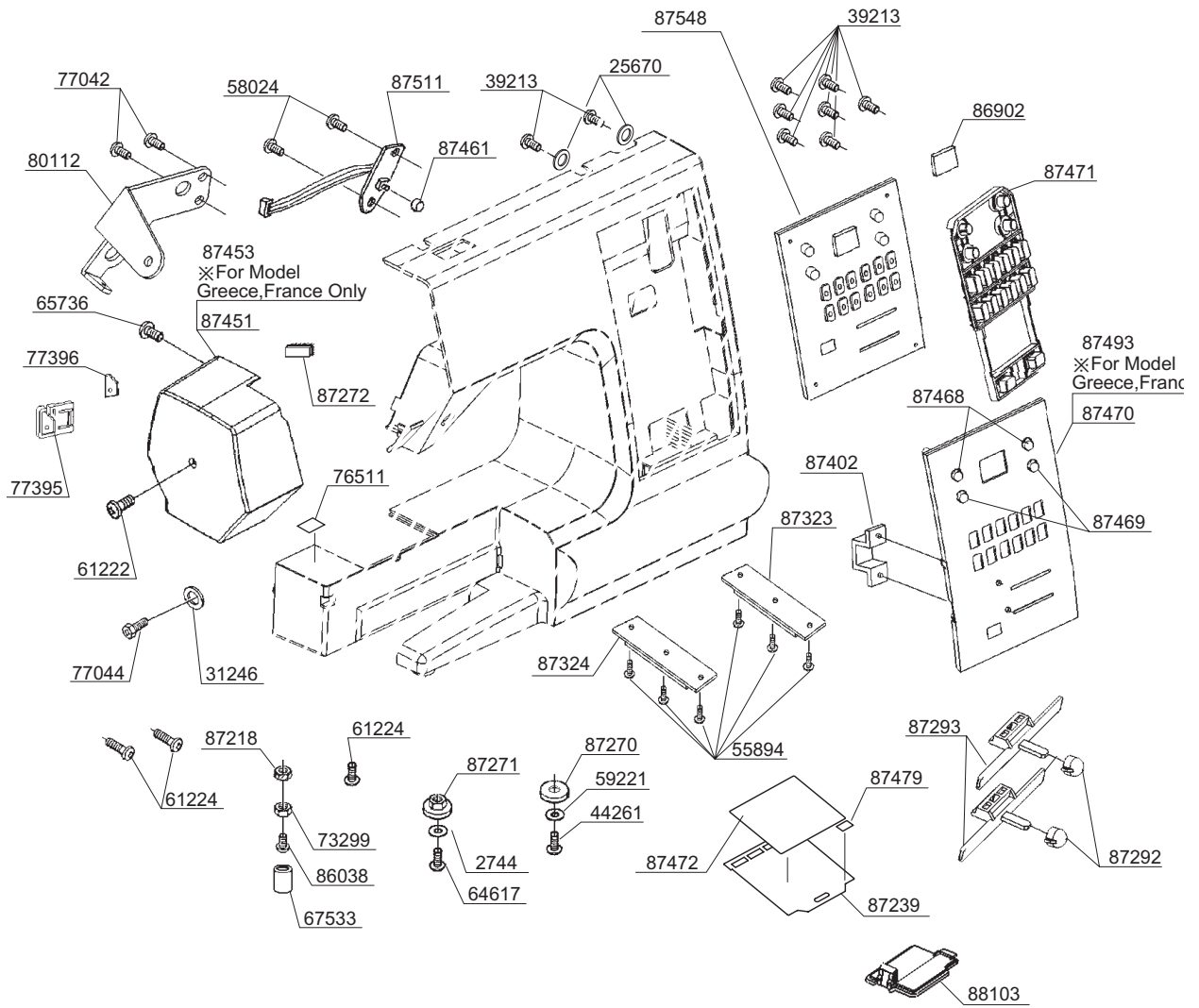
FIRST DIGIT
1 OR 2

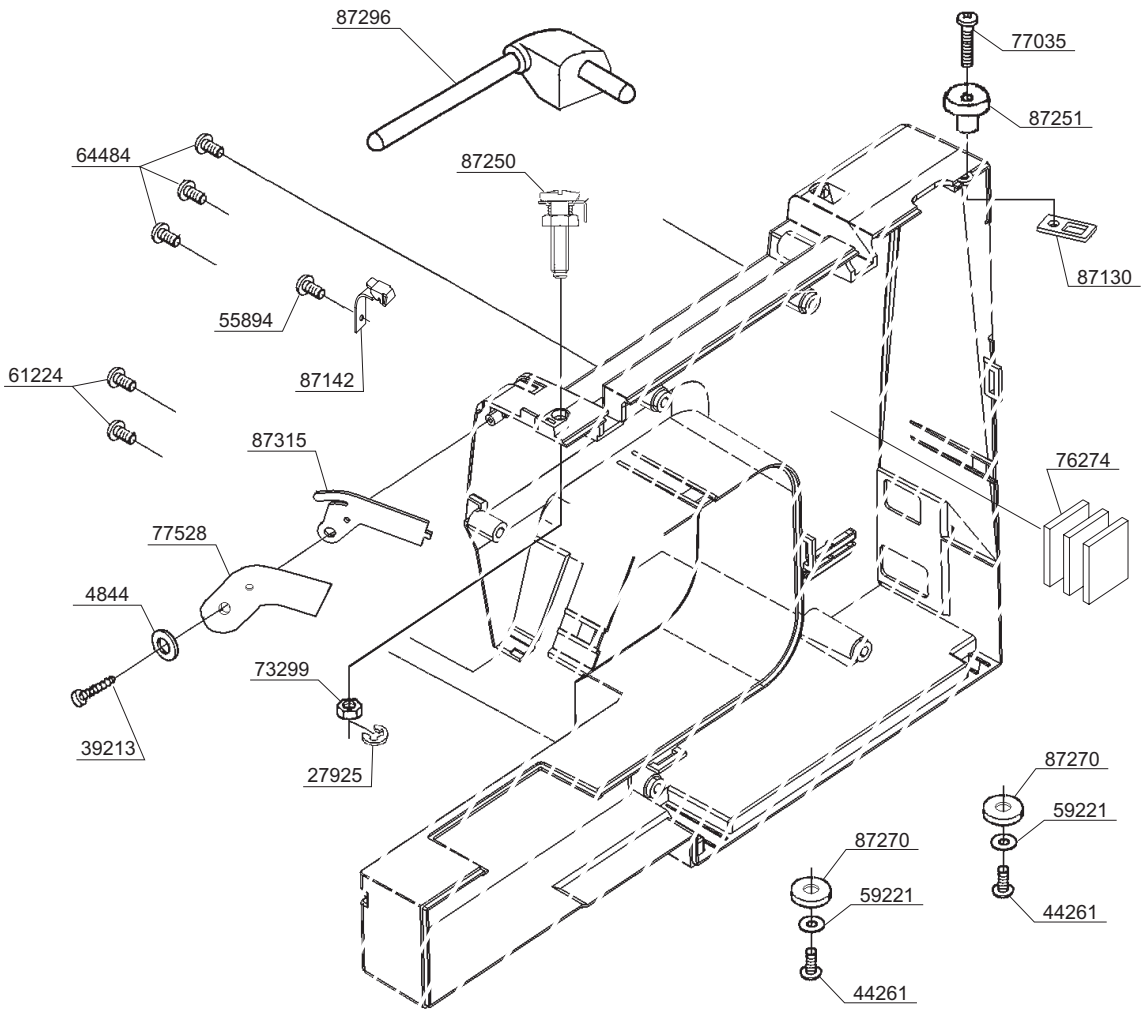
NOTE : PARTS NUMBER WITH ✕ MARKS
ARE FOR MACHINES SERIAL NUMBERS
WITH "1"OR "2" AT FIRST DIGIT.

Q

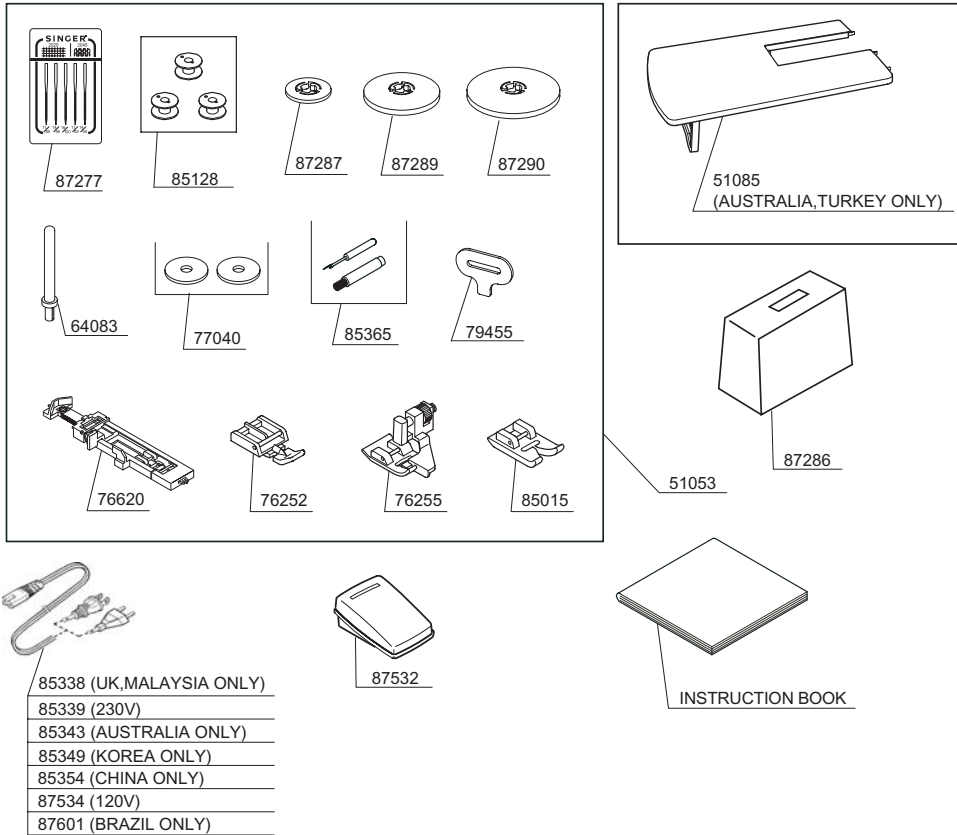


R





OPTIONAL OR STANDARD FOR LIMITED VERSION.



Optional Accessory

PART NO.	DESCRIPTION
51053	ACCESSORY SET
51085	EXTENSION TABLE
64083	SPOOL PIN
76252	ZIPPER FOOT
76255	BLIND STITCH FOOT
76620	BUTTONHOLE FOOT
77040	SPOOL PIN DISC
77236	INSTRUCTION BOOK (Eng/Free/Spa)
77242	INSTRUCTION BOOK (Ita/Dut/Ger)
77260	INSTRUCTION BOOK (Korean)
77270	INSTRUCTION BOOK (Fre/Gree/Eng)
77273	INSTRUCTION BOOK (Dan/Swe/Nor)
77275	INSTRUCTION BOOK (Fin/Estonian/Portuguese)
77367	INSTRUCTION BOOK (Turkish/Eng/Fre)
77385	INSTRUCTION BOOK (Brazilian-Portuguese)
79455	LARGE SCREW DRIVER
82020	INSTRUCTION BOOK (Russia)
85015	SATIN FOOT
85128	BOBBIN
85338	POWER CORD (UK ONLY)
85339	POWER CORD (230V)
85343	POWER CORD (AUSTRALIA ONLY)
85349	POWER CORD (KOREA ONLY)
85354	POWER CORD (CHINA ONLY)
85365	BUTTONHOLE OPENER / BRUSH
87277	NEEDLE SET
87286	VINYL COVER
87287	SPOOL PIN CAP (MINI)
87289	SPOOL PIN CAP (SMALL)
87290	SPOOL PIN CAP (LARGE)
87532	FOOT CONTROL (PIN-JACK TYPE)
87534	POWER CORD (120V)
87601	POWER CORD (BRAZIL ONLY)

PART NO.	DESCRIPTION	PAGE	PART NO.	DESCRIPTION	PAGE
1513	E4 CLIP-ON-WASHER	A,E,J,L	72858	WASHER	J
1520	E3 CLIP-ON-WASHER	F,J,M,N,O,P,Q	73299	M4 TORQUE NUT	E,J,R,S
2744	WASHER	R	73371	M6 SCREW	B,C
4844	WASHER	S	73434	M4 PHILLIPS SCREW	B,C,I
10963	E6 CLIP-ON-WASHER	B,C,D,I	73472	COLLAR	B,C
25670	WASHER	R	73900	M3 PHILLIPS SCREW	D,E,F,J
26934	#8 SCREW	E	74050	EXTENSION SPRING	E
27925	E2.5 CLIP-ON-WASHER	S	75022	THREAD GUIDE	E
28735	CRINKLE WASHER	E	75024	STOPPER	E
28917	HOOK FOR SPRING	E	75025	GUIDE BLOCK	E
31246	WASHER	K,L,R	75027	COMPRESSION SPRING	E
31733	M3 NUT	E	75047	CLUTCH	B,C
32949	WASHER	J,K	75060	TAKE-UP LEVER CRANK	B,C
39213	M3 SCREW	E,M,N,O,P,Q,R,S	75194	TORSION SPRING	B,C
43389	THRUST WASHER	B,C	75207	CS-CLIP	B,C
43390	THRUST WASHER	I	75274	M4 PHILLIPS SCREW	B,C,J
43392	THRUST WASHER	I	76114	COVER GUIDE (R)	F
43930	SPRING PIN	B,C	76132	SHAFT	J
44066	SPRING PIN	B,C	76141	BALL METAL	I
44261	M4 SCREW	R,S	76159	COMPRESSION LEVER	F
51046	NEEDLE PLATE SET	F	76163	THREADER SHAFT SET	E
51049	FEED REGULATOR UNIT	L	76183	NEEDLE BAR	E
51051	THREAD GUIDE PLATE ASSY	G,H	76203	OILING CORD	I
51052	TENSION ASSY	G	76211	BEVEL GEAR	I
51053	ACCESSORY SET	T	76251	ZIGZAG PRESSER FOOT	F
51058	RETAINER SET	J	76252	ZIPPER FOOT	T
51085	EXTENSION TABLE	T	76255	BLIND STITCH FOOT	T
51089	LOWER SHAFT WITH LIFTING CAM	SET I	76274	SPACER	S
51100	TENSION ASSY	H	76317	M3 PHILLIPS SCREW	E,F,K
53321	THRUST WASHER	E,K	76366	CRANK SHAFT	B,C
53403	WASHER	B,C	76511	SEAL	R
55894	M3 SCREW	R,S	76547	THREAD CONTROL PLATE	F
56858	M2 PHILLIPS SCREW	F	76620	BUTTONHOLE FOOT	T
58024	TAPPING SCREW	R	76688	SHAFT	B,C
59221	WASHER	L,R,S	77035	M4 PHILLIPS SCREW	B,C,Q,S
61221	M4 PHILLIPS SCREW	J	77040	SPOOL PIN DISC	T
61222	M4 PHILIPS SCREW	M,N,O,P,Q,R	77041	UNITY FASTENER	E,K,L,M,N,O,P,Q
61224	M4 PHILIPS SCREW	C,M,N,O,P,Q,R,S	77042	M4 PHILLIPS SCREW	A,D,E,F,G,H,J,K,L,M,N,O,P,Q,R
61225	M4 PHILIPS SCREW	M,N,O,P	77043	FELT WASHER	E,F
61341	M4 SCREW	E	77044	M3 PHILLIPS SCREW	R
62215	M4 NUT	G,H	77053	M3 PHILLIPS SCREW	D
63278	PRESSER BAR	F	77236	INSTRUCTION BOOK (Eng/Free/Spa)	T
63796	M3 SCREW	E,K,L	77242	INSTRUCTION BOOK (Ita/Dut/Ger)	T
63805	WASHER	E,K	77260	INSTRUCTION BOOK (Korean)	T
63805	WASHER	L	77270	INSTRUCTION BOOK (Fre/Gree/Eng)	T
64051	M4 SCREW	F	77273	INSTRUCTION BOOK (Dan/Swe/Nor)	T
64083	SPOOL PIN	T	77275	INSTRUCTION BOOK (Fin/Estonian/Portuguese)	T
64179	SPRING PIN	I	77367	INSTRUCTION BOOK (Turkish/Eng/Fre)	T
64359	M4 SCREW	E	77385	INSTRUCTION BOOK (Brazilian-Portuguese)	T
64484	TAPPING SCREW	S	77395	BLADE FIXTURE	R
64617	TAPPING SCREW	R	77396	BLADE	R
64653	M3 SCREW	E,J	77421	THREADER ASSEMBLY	E
64653	M3 SCREW	K,L	77527	SENSOR COVER	E,K,L
65736	M4 PHILLIPS SCREW	R	77528	SPRING PLATE	S
66005	M2 PHILLIPS SCREW	E,F	77614	GEAR CLUTCH	M,N,O,P,Q
66235	SECURING PLATE	B,C	79455	LARGE SCREW DRIVER	T
66437	BUSH	B,C	79491	SCREW	F
66725	M4 SCREW	B,C,E,I,J	80070	CORD GUIDE	A
66727	M4 SCREW	B,C,F,I	80073	NEEDLE BAR CRANK SET	E
66787	WASHER	B,C	80076	SWITCH BRACKET	M,N
67232	NEEDLE	E	80078	SHUTTLE RACE SHAFT	I
67444	COLLAR	I			
67447	M5 SCREW	B,C,I			
67533	RUBBER CUSHION	R			
68152	BALL BUSH	B,C			
68299	#7 SCREW FOR SHANK	F			
68343	PIN	E			
72266	M4 STUD SCREW	G,H			
72367	M4 CP SCREW	E			

PART NO.	DESCRIPTION	PAGE	PART NO.	DESCRIPTION	PAGE
80079	CORD GUIDE	F,K,L	87170	BALL METAL	I
80095	STRAIGHT PIN	E	87171	TIMING BELT GEAR (LOWER)	I
80096	M2 SCREW	F	87174	FORKED CRANK	J
80102	CONTROL PLATE	F	87178	FEED REGULATOR SHAFT METAL BUSH	K,L
80110	M3 PHILLIPS SCREW	K,L	87180	EXTENSION SPRING	D
80112	FACE COVER BRACKET	R	87182	TORSION SPRING	D
80113	TORSION SPRING	K	87183	SPRING	E
80123	M3 SCREW	L	87184	SPRING	E
82020	INSTRUCTION BOOK (Russia)	T	87186	TORSION SPRING	J
85013	POSITIONING COLLAR	B,C	87188	EXTENSION SPRING	K,L,
85015	SATIN FOOT	T	87189	COMPRESSION SPRING	K,L
85016	PRESSER FOOT HOLDER	F	87191	COMPRESSION SPRING	L
85017	BALANCER	B,C	87193	HANDLE BRACKET (L)	A
85046	COLLAR	B,C	87194	HANDLE BRACKET (R)	A
85064	EXTENSION SPRING	F	87200	MAIN SHAFT	B,C
85065	COMPRESSION SPRING	F	87201	LOWER STRAIGHT SHAFT (NLA)	
85128	BOBBIN	I,T		→ORDER COMPLETE 51089	I
85138	TENSION ROLLER	B,C	87202	SHAFT	J
85181	LEAF SPRING	F	87203	SHAFT	J
85198	BH PLATE(A)	F	87206	PIN	J
85217	RETAINER	B,C	87207	STRAIGHT PIN	E
85247	SECURING PLATE	I	87208	BALL HEADED PIN	J
85252	WASHER	J	87210	PIN	J
85262	M2 SCREW	F	87211	M3 SCREW	E
85274	M2 SCREW	D	87212	M4 SCREW	G,H
85338	POWER CORD (UK ONLY)	T	87216	PIN	A
85339	POWER CORD (230V)	T	87217	COLLAR	K
85343	POWER CORD (AUSTRALIA ONLY)	T	87218	NUT	R
85349	POWER CORD (KOREA ONLY)	T	87220	BELT PULLEY	B,C
85354	POWER CORD (CHINA ONLY)	T	87221	UPPER TIMING BELT GEAR	B,C
85365	BUTTONHOLE OPENER / BRUSH	T	87225	ECCENTRIC CAM	E
86038	STUD SCREW	R	87226	VERTICAL FEED BLOCK	J
86080	SHUTTLE RACE	I	87227	LIFTING CAM (NLA)	
86132	BOBBIN CASE	I		→ ORDER COMPLETE 51089	I
86256	COVER GUIDE (L)	F	87228	FEED CAM	I
86902	INDICATOR WINDOW	R	87229	FEED REGULATOR	K
86945	JUMPER HARNESS	M,N,O,P,Q	87232	M6 STUD SCREW	J
87101	NEEDLE BAR SUPPORT	E	87234	RELEASE LEVER	F
87103	FEED DOG BASE	J	87235	ZIGZAG CAM WITH GEAR	E
87104	FEED DOG BASE SUPPORT	J	87236	LED LIGHT COVER	E
87105	FEED DOG	J	87237	MOTOR FAN	M,N,O,P,Q
87106	NEEDLE PLATE	F	87239	PATTERN DRAWER	R
87107	BOBBIN CASE STOPPER	F	87241	ENCODER	B,C
87108	NEEDLE BAR SUPPORT BRACKET	E	87242	INSULATION SHEET	D
87109	SECURING PLATE	E	87245	BELL CLANK FOR ZIGZAG	E
87110	NEEDLE BAR ADJUSTING PLATE	E	87246	PINION GEAR	E,K
87111	NEEDLE BAR SWING BRACKET	E	87249	SWITCH BRACKET	O,P,Q
87112	TENSION RELEASE LEVER	G,H	87250	M4 SPECIAL SCREW UNIT	S
87114	PRESSURE BAR GUIDE	F	87251	BOBBIN WINDER CAM	S
87117	BH PLATE B	F	87253	PINION GEAR	L
87118	BH PLATE C	F	87254	FEED REGULATOR (NLA)	
87120	THREAD GUIDE PLATE	E		→ ORDER COMPLETE 88118	L
87122	SUPPORT PLATE	J	87255	M4 BOLT	K
87125	IDLER PULLEY BRACKET	B,C	87257	BUSH	O,P
87126	MAIN MOTOR BRACKET	M,N,O,P,Q	87258	COLLAR (NLA)	
87128	MOUNTING BRACKET	D		→ ORDER COMPLETE 88118	L
87129	RETAINER	D	87261	CP BOLT	K,L,M,N,O,P,Q
87130	RETAINER	S	87262	M3 CP SCREW	J,K,L
87133	BRACKET	A	87263	DRIVING BELT	M,N,O,P,Q
87134	TAKE-UP LEVER	B,C	87264	TIMING BELT	B,C
87135	BRACKET	F	87265	SPACER	E
87136	L-R LIMITER	E	87266	TUBE	E,K
87139	MOUNTING BRACKET	D	87267	INSULATION SHEET	E
87142	RETAINER	S	87268	M6 NUT	J
87146	BRACKET	K,L	87269	WASHER	J
87147	STEPPING MOTOR BRACKET	K	87270	RUBBER FOOT	R,S
87148	STEPPING MOTOR BRACKET	L	87271	RUBBER FOOT	R
87154	NEEDLE CLAMP SET	E	87272	BRUSH	R
87156	BRACKET	A	87273	PIN	L

PART NO.	DESCRIPTION	PAGE	PART NO.	DESCRIPTION	PAGE
87274	WASHER	L	87668	M4 BOLT	L
87277	NEEDLE SET	T	87714	PRESSURE SUPPORT PLATE UNIT	F
87286	VINYL COVER	T	87739	BOBBIN WINDER BRACKET	D
87287	SPOOL PIN CAP (MINI)	T	87749	M3 SHOULDER SCREW	D
87288	PULLEY CAP	B,C	87750	BOBBIN WINDER BRACKET UNIT	D
87289	SPOOL PIN CAP (SMALL)	T	87815	BOBBIN WINDER UNIT	D
87290	SPOOL PIN CAP (LARGE)	T	88103	COVER	R
87291	CPU CIRCUIT BOARD BOX	M,N,O,P,Q	88118	FEED REGULATOR	L
87292	KNOB	R	88311	TAKE-UP LEVER SHAFT BLOCK	C
87293	SLIDE LEVER	R			
87296	SPOOL PIN UNIT	S			
87297	PRESSURE BAR LIFTER	G,H			
87299	PULLEY	B,C			
87305	HANDLE	A			
87315	TENSION PLATE	S			
87316	AC CIRCUIT BOARD BOX	M,N,O,P,Q			
87323	DRAWER BRACKET (RIGHT)	R			
87324	DRAWER BRACKET (LEFT)	R			
87402	LED PANEL	R			
87422	DROP GUIDE	J			
87423	DROP LEVER	J			
87424	TORSION SPRING	J			
87425	DROP KNOB	J			
87426	SECURING BRACKET	J			
87433	TORSION SPRING	J			
87446	ACC. BOX	A			
87451	FACE COVER	R			
87453	FACE COVER	R			
	(FOR MODEL GREECE, FRANCE ONLY)	R			
87456	NEEDLE COVER PLATE	F			
87461	BUTTON	R			
87468	BUTTON	R			
87469	BUTTON	R			
87470	CONTROL PANEL	R			
87471	PATTERN SWITCH	R			
87472	PATTERN SEAL	R			
87479	SEAL	R			
87493	CONTROL PANEL	R			
	(FOR MODEL GREECE, FRANCE ONLY)	R			
87502	LED LIGHT CIRCUIT BOARD	E			
87507	BH SWITCH HARNESS	F			
87510	MAIN MOTOR	M,N,Q			
87511	SWITCH HARNESS	R			
87513	PIN-JACK HARNESS	M,N,O,P,Q			
87514	TRANSFORMER	M,N,Q			
87515	MAIN MOTOR	O,P			
87516	SWITCH HARNESS	K,L			
87517	SWITCH HARNESS FOR ZIGZAG	E			
87519	TRANSFORMER	O,P			
87522	13P CORD HARNESS	M,N,O,P,Q			
87523	4P CORD HARNESS	M,N,O,P,Q			
87524	5P CORD HARNESS	M,N,O,P,Q			
87527	PHOTO SENSOR CIRCUIT BOARD	D			
87529	4P CORD HARNESS	M,N,O,P,Q			
87530	CIRCUIT BOARD	M,N,Q			
87532	FOOT CONTROL (PIN-JACK TYPE)	T			
87534	POWER CORD (120V)	T			
87536	INLET HARNESS	M			
87536	INLET HARNESS	N			
87541	SWITCH	M,N,O,P,Q			
87542	INSULATION SHEET	M,N,O,P,Q			
87548	SWITCH CIRCUIT BOARD	R			
87553	CIRCUIT BOARD	O,P			
87555	CPU CIRCUIT BOARD	M,O			
87575	INLET HARNESS	O,P,Q			
87584	SWITCH HARNESS	D			
87585	CPU CIRCUIT BOARD	N,P,Q			
87600	STEPPING MOTOR	E,K,L			
87601	POWER CORD (BRAZIL ONLY)	T			