

BUYER'S MODEL NO. 7462

FACTORY MODEL 462x0, 462x1, 462x2

ORIGINAL ISSUE JULY, 2005

REVISION AUGUST, 2005

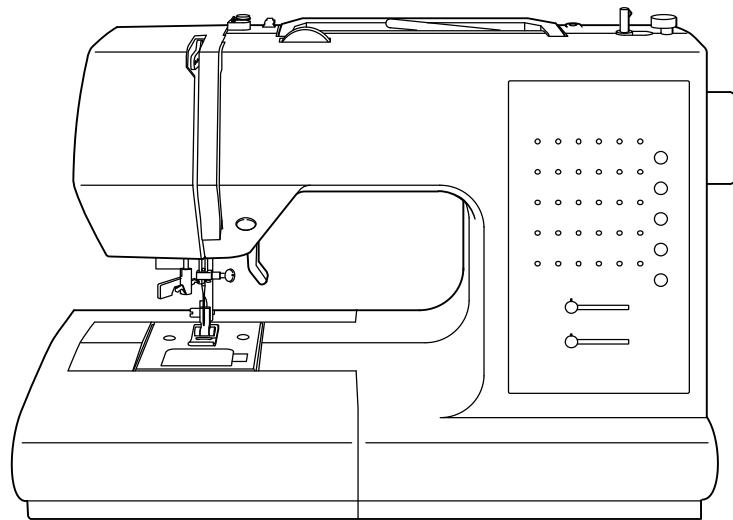
REVISION MARCH, 2008

REVISION MAY, 2008

SECTION ----

REFER TO IMPORTANT NOTICE BELOW

# PARTS LIST FOR MODEL 7462

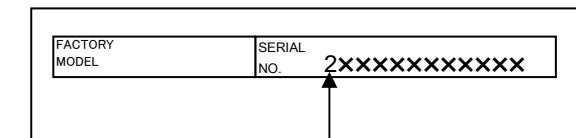
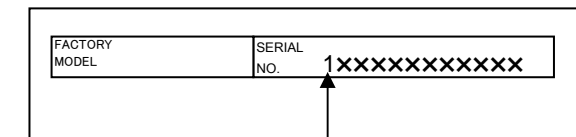
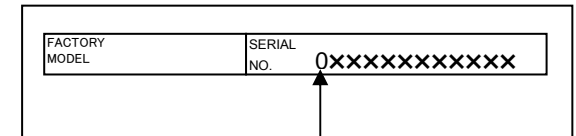


# SINGER®

## IMPORTANT:

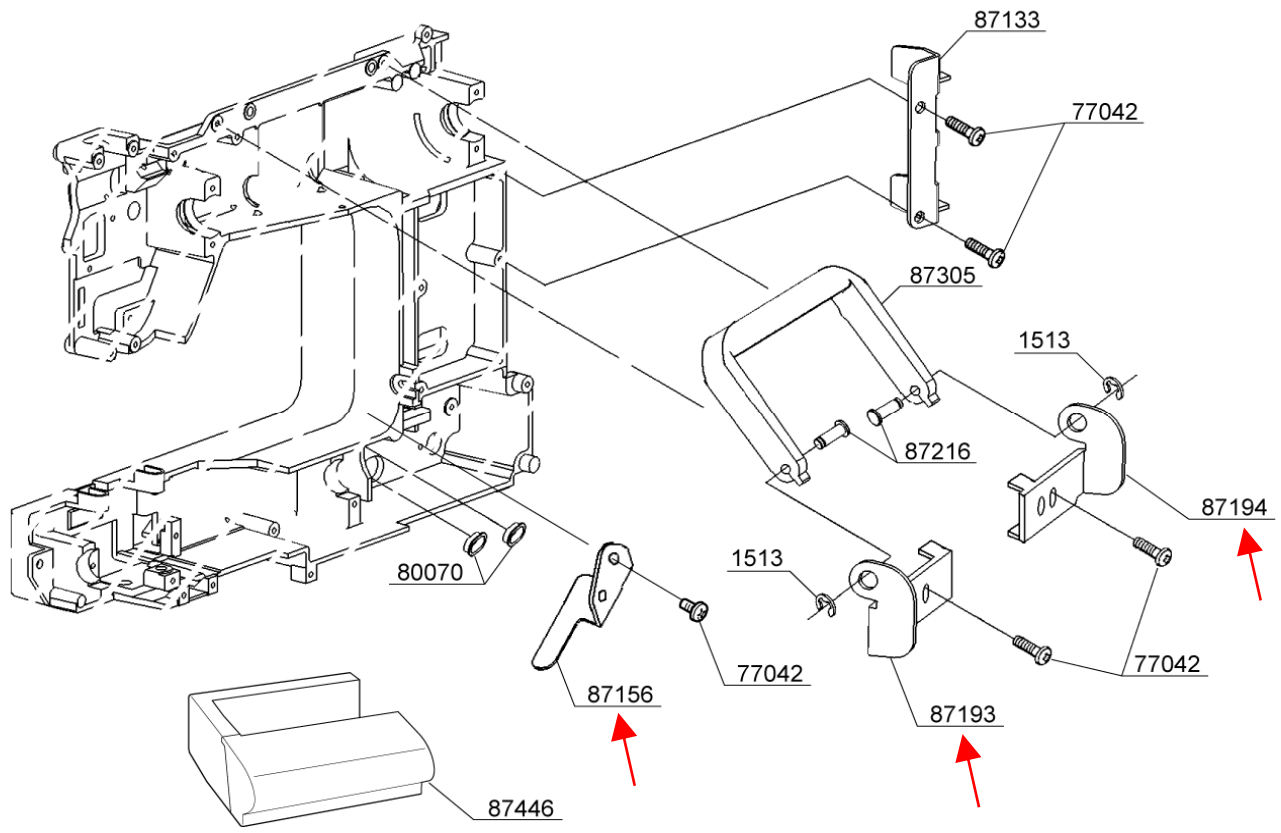
WHEN ORDERING THE PARTS  
ALWAYS CHECK THE SERIAL  
NUMBER OF THE MACHINE.

FIRST DIGIT OF THE SERIAL  
NUMBER MUST MATCH WITH  
THE LAST DIGIT OF THE FACTORY  
MODEL ABOVE.



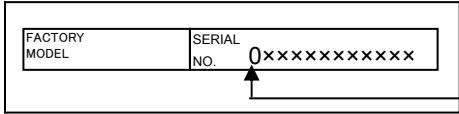
BUYER'S MODEL NO.	7462	SECTION	PAGE	REVISION	REMARKS	PART NO.	DESCRIPTION
BUYER'S MODEL NAME	COSMO G-2,CB-1		<b>1</b>	MARCH, 2008		1513	E4 CLIP-ON-WASHER
FACTORY MODEL	462x0 , 462x1 , 462x2					77042	M4 PHILLIPS SCREW
ORIGINAL ISSUE	JULY , 2005	SERIAL NO.				80070	CORD GUIDE

87133	BRACKET
87156	BRACKET
87193	HANDLE BRACKET ( L )
87194	HANDLE BRACKET ( R )
87216	PIN
87305	HANDLE
87446	ACC. BOX



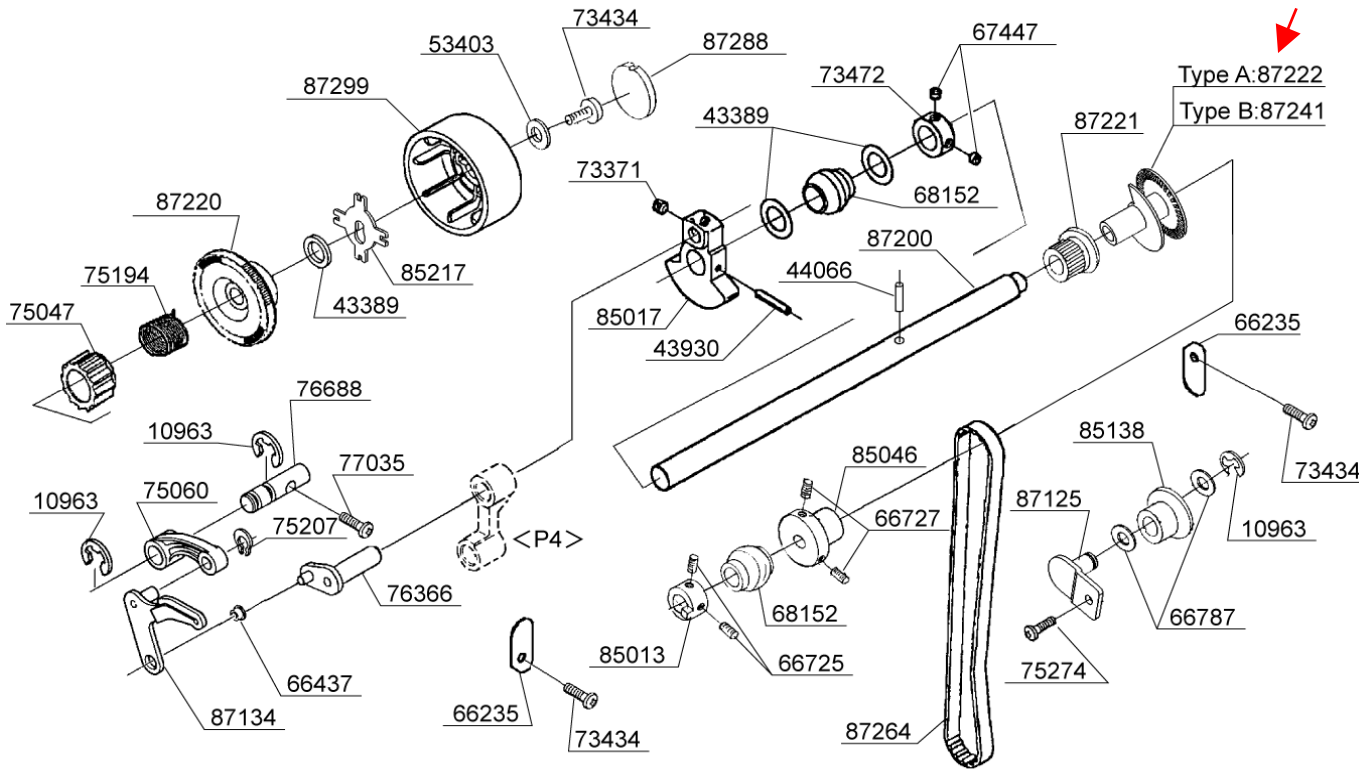
BUYER'S MODEL NO.	7462	SECTION	PAGE	REVISION	REMARKS
BUYER'S MODEL NAME	COSMO G-2,CB-1		<b>2-1</b>	JANUARY, 2008	
FACTORY MODEL	462x0 , 462x1				
ORIGINAL ISSUE	JULY , 2005	SERIAL NO.			

PART NO.	DESCRIPTION
10963	E6 CLIP-ON-WASHER
43389	THRUST WASHER
43930	SPRING PIN
44066	SPRING PIN
53403	WASHER
66235	SECURING PLATE
66437	BUSH
66725	M4 SCREW
66727	M4 SCREW
66787	WASHER
67447	M5 SCREW
68152	BALL BUSH
73371	M6 SCREW
73434	M4 PHILLIPS SCREW
73472	COLLAR
75047	CLUTCH
75060	TAKE-UP LEVER CRANK
75194	TORSION SPRING
75207	CS-CLIP
75274	M4 PHILLIPS SCREW
76366	CRANK SHAFT
76688	SHAFT
77035	M4 PHILLIPS SCREW
85013	POSITIONING COLLAR
85017	BALANCER
85046	COLLAR
85138	TENSION ROLLER
85217	RETAINER
87125	IDLER PULLEY BRACKET
87134	TAKE-UP LEVER
87200	MAIN SHAFT
87220	BELT PULLEY
87221	UPPER TIMING BELT GEAR
87222	ENCODER
87241	ENCODER
87264	TIMING BELT
87288	PULLEY CAP
87299	PULLEY



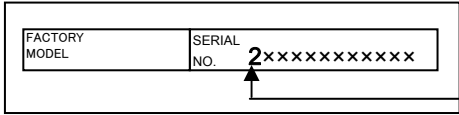
NOTE : PARTS NUMBER WITH ※ MARKS ARE FOR MACHINES SERIAL NUMBERS WITH "0"OR"1" AT FIRST DIGIT

Select Type-A with 2 rotating discs or Type-B with 3 rotating discs in combination with photo sensors listed on page 3.

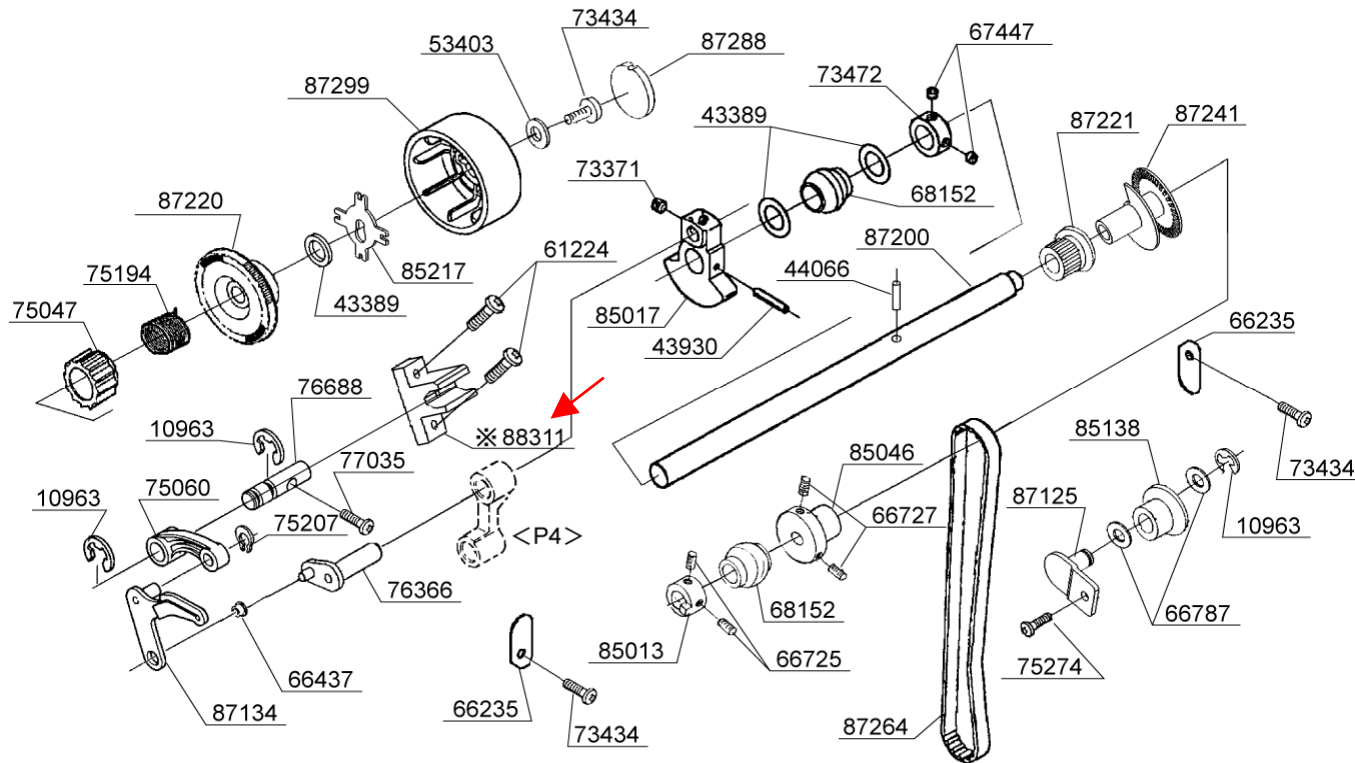


BUYER'S MODEL NO.	7462	SECTION	PAGE	REVISION	REMARKS
BUYER'S MODEL NAME	COSMO G-2,CB-1		<b>2-2</b>		
FACTORY MODEL	462x2				
ORIGINAL ISSUE	MARCH, 2008	SERIAL NO.			

PART NO	DESCRIPTION
10963	E6 CLIP-ON-WASHER
43389	THRUST WASHER
43930	SPRING PIN
44066	SPRING PIN
53403	WASHER
61224	M4 PHILIPS SCREW
66235	SECURING PLATE
66437	BUSH
66725	M4 SCREW
66727	M4 SCREW
66787	WASHER
67447	M5 SCREW
68152	BALL BUSH
73371	M6 SCREW
73434	M4 PHILIPS SCREW
73472	COLLAR
75047	CLUTCH
75060	TAKE-UP LEVER CRANK
75194	TORSION SPRING
75207	CS-CLIP
75274	M4 PHILIPS SCREW
76366	CRANK SHAFT
76688	SHAFT
77035	M4 PHILIPS SCREW
85013	POSITIONING COLLAR
85017	BALANCER
85046	COLLAR
85138	TENSION ROLLER
85217	RETAINER
87125	IDLER PULLEY BRACKET
87134	TAKE-UP LEVER
87200	MAIN SHAFT
87220	BELT PULLEY
87221	UPPER TIMING BELT GEAR
87241	ENCODER
87264	TIMING BELT
87288	PULLEY CAP
87299	PULLEY
88311	TAKE-UP LEVER SHAFT BLOCK

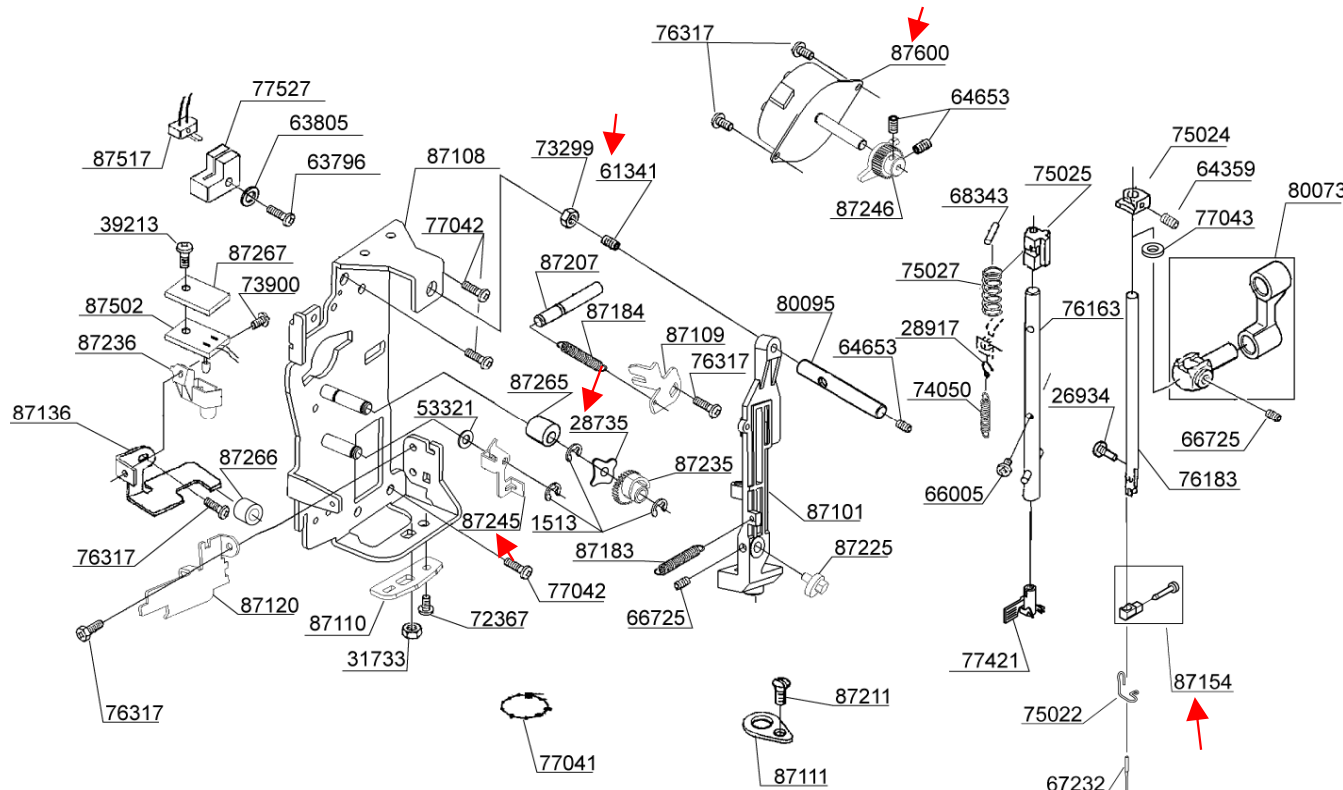


NOTE : PARTS NUMBER WITH ※ MARKS ARE FOR MACHINES SERIAL NUMBERS WITH "2" AT FIRST DIGIT.





BUYER'S MODEL NO.	7462	SECTION	PAGE	REVISION	REMARKS	PART NO	DESCRIPTION
BUYER'S MODEL NAME	COSMO G-2,CB-1		4	MARCH, 2008		1513	E4 CLIP-ON-WASHER
FACTORY MODEL	462x0 , 462x1 , 462x2						26934
ORIGINAL ISSUE	JULY , 2005	SERIAL NO.				28735	CRINKLE WASHER



PART NO	DESCRIPTION
1513	E4 CLIP-ON-WASHER
26934	#8 SCREW
28735	CRINKLE WASHER
28917	HOOK FOR SPRING
31733	M3 NUT
39213	M3 SCREW
53321	THRUST WASHER
61341	M4 SCREW
63796	M3 SCREW
63805	WASHER
64359	M4 SCREW
64653	M3 SCREW
66005	M2 PHILLIPS SCREW
66725	M4 SCREW
67232	NEEDLE
68343	PIN
72367	M4 CP SCREW
73299	M4 TORQUE NUT
73900	M3 PHILLIPS SCREW
74050	EXTENSION SPRING
75022	THREAD GUIDE
75024	STOPPER
75025	GUIDE BLOCK
75027	COMPRESSION SPRING
76163	THREADER SHAFT SET
76183	NEEDLE BAR
76317	M3 PHILLIPS SCREW
77041	UNITY FASTENER
77042	M4 PHILLIPS SCREW
77421	THREADER ASSEMBLY
77527	SENSOR COVER
80073	NEEDLE BAR CRANK SET
80095	STRAIGHT PIN
87101	NEEDLE BAR SUPPORT
87108	NEEDLE BAR SUPPORT BRACKET
87109	SECURING PLATE
87110	NEEDLE BAR ADJUSTING PLATE
87111	NEEDLE BAR SWING BRACKET
87120	THREAD GUIDE PLATE
87136	L-R LIMITER
87154	NEEDLE CLAMP SET
87183	SPRING
87184	SPRING
87207	STRAIGHT PIN
87211	M3 SCREW
87225	ECCENTRIC CAM
87235	ZIGZAG CAM WITH GEAR
87236	LED LIGHT COVER
87245	BELL CLANK FOR ZIGZAG
87246	PINION GEAR
87265	SPACER
87266	TUBE
87267	INSULATION SHEET
87502	LED LIGHT CIRCUIT BOARD
87517	SWITCH HARNESS FOR ZIGZAG
87600	STEPPING MOTOR

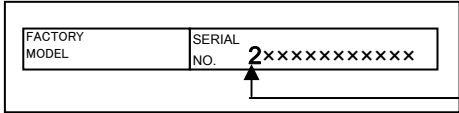




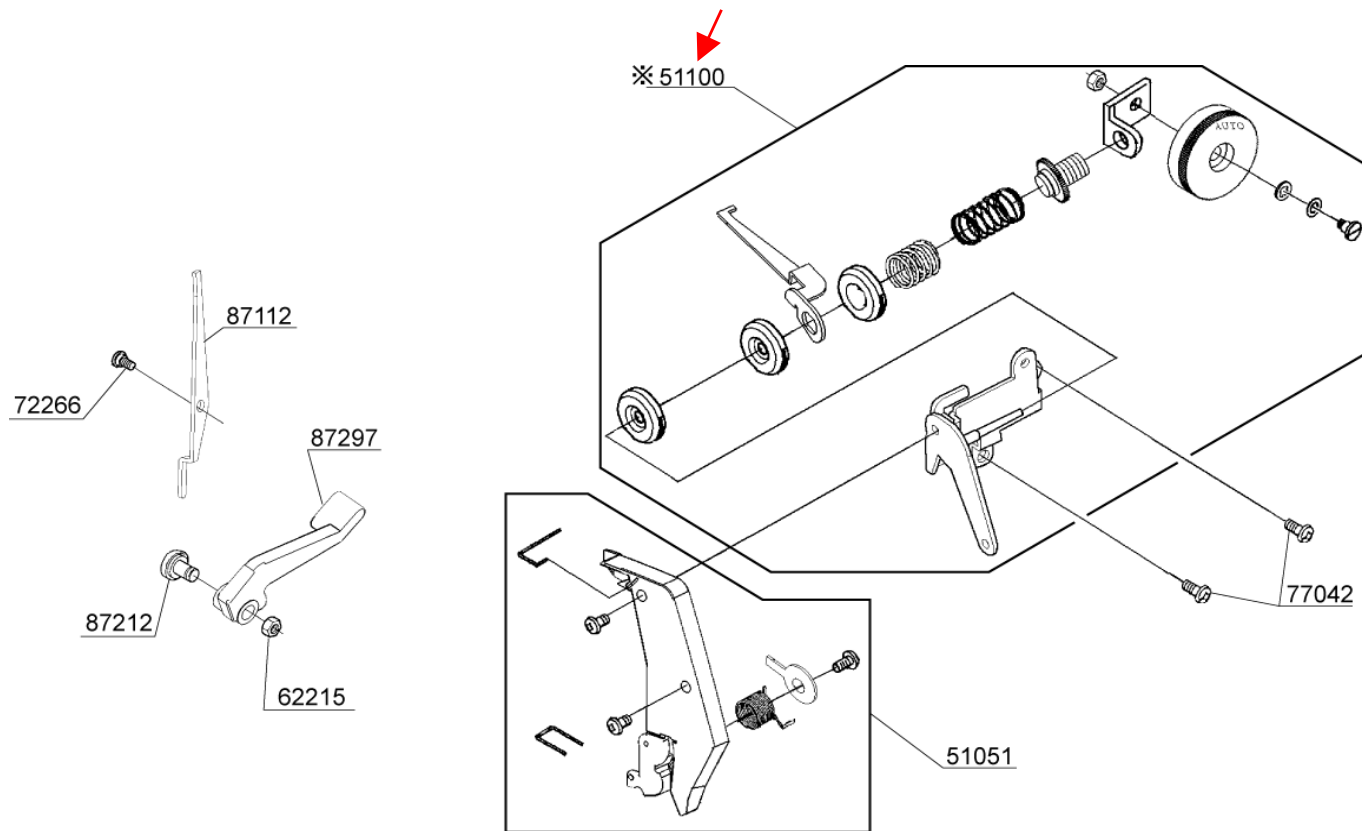


BUYER'S MODEL NO.	7462	SECTION	PAGE	REVISION	REMARKS
BUYER'S MODEL NAME	COSMO G-2,CB-1		<b>6-2</b>		
FACTORY MODEL	462x2				
ORIGINAL ISSUE	MARCH,2008	SERIAL NO.			

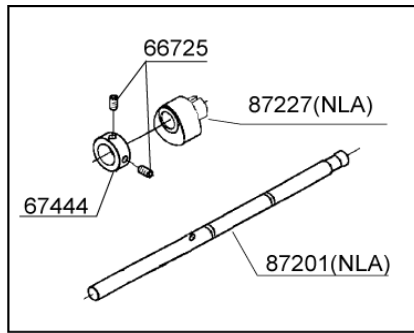
PART NO.	DESCRIPTION
51051	THREAD GUIDE PLATE ASSY
51100	TENSION ASSY
62215	M4 NUT
72266	M4 STUD SCREW
77042	M4 PHILLIPS SCREW
87112	TENSION RELEASE LEVER
87212	M4 SCREW
87297	PRESSURE BAR LIFTER



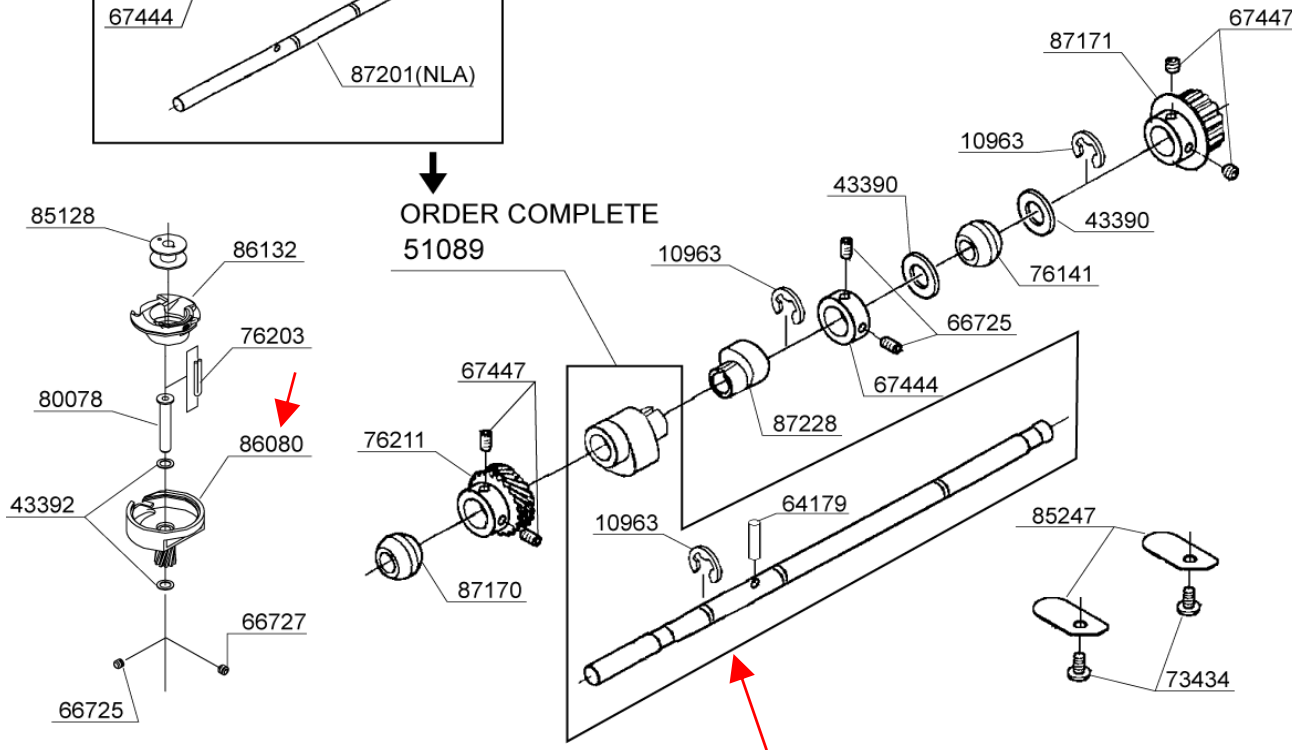
NOTE : PARTS NUMBER WITH ※ MARKS ARE FOR MACHINES SERIAL NUMBERS WITH "2" AT FIRST DIGIT.



BUYER'S MODEL NO.	7462	SECTION	PAGE	REVISION	REMARKS	PART NO.	DESCRIPTION
BUYER'S MODEL NAME	COSMO G-2,CB-1		<b>7</b>	MARCH, 2008		10963	E6 CLIP-ON-WASHER
FACTORY MODEL	462x0 , 462x1 , 462x2					43390	THRUST WASHER
ORIGINAL ISSUE	JULY , 2005					43392	THRUST WASHER
		SERIAL NO.				51089	LOWER SHAFT WITH LIFTING CAM SET

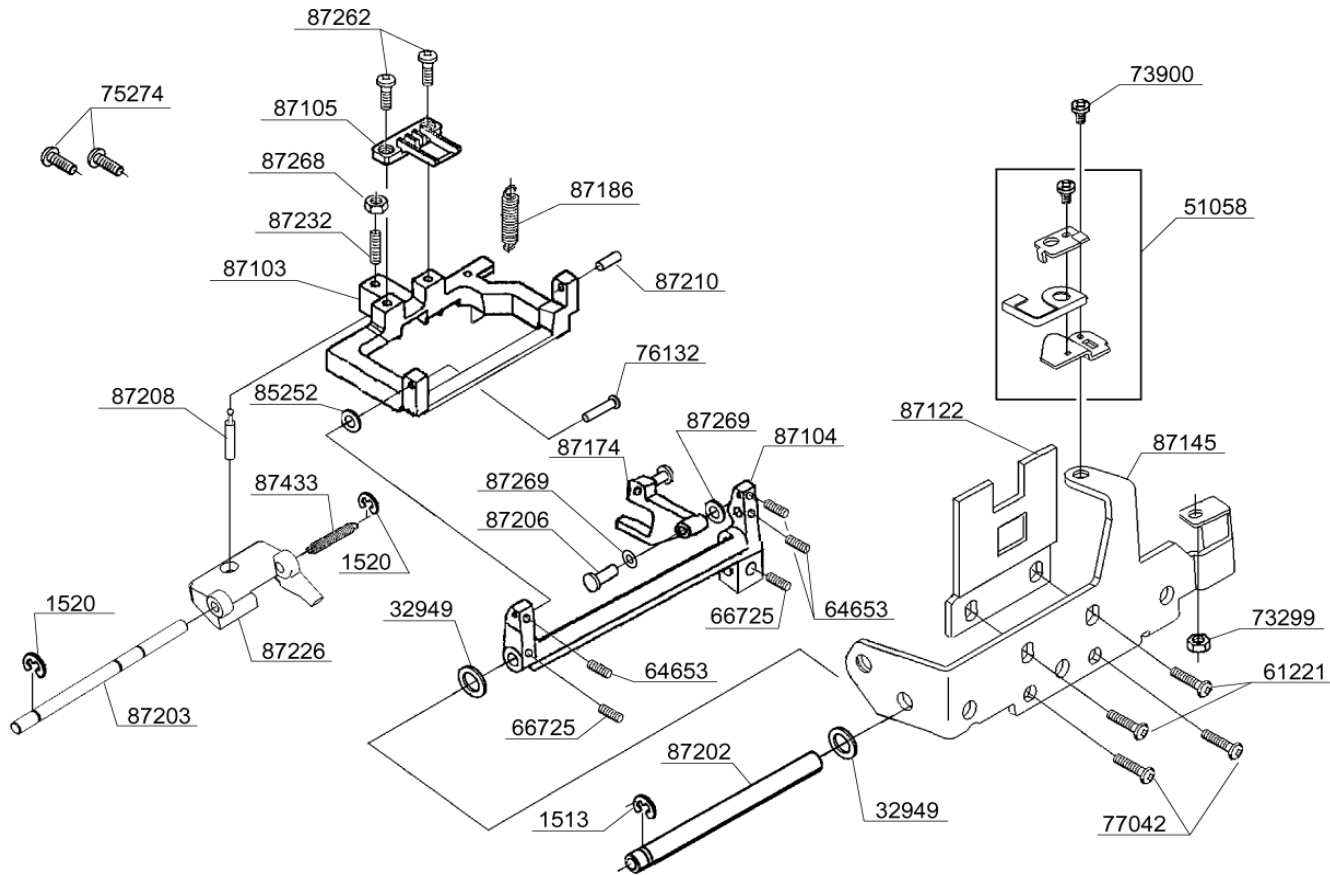


ORDER COMPLETE  
51089



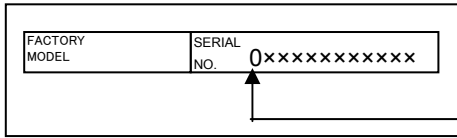
10963	E6 CLIP-ON-WASHER
43390	THRUST WASHER
43392	THRUST WASHER
51089	LOWER SHAFT WITH LIFTING CAM SET
64179	SPRING PIN
66725	M4 SCREW
66727	M4 SCREW
67444	COLLAR
67447	M5 SCREW
73434	M4 PHILLIPS SCREW
76141	BALL METAL
76203	OILING CORD
76211	BEVEL GEAR
80078	SHUTTLE RACE SHAFT
85128	BOBBIN
85247	SECURING PLATE
86080	SHUTTLE RACE
86132	BOBBIN CASE
87170	BALL METAL
87171	TIMING BELT GEAR (LOWER)
87201	LOWER STRAIGHT SHAFT (NLA) →
87227	LIFTING CAM (NLA) →
87228	FEED CAM

BUYER'S MODEL NO.	7462	SECTION	PAGE	REVISION	REMARKS	PART NO.	DESCRIPTION
BUYER'S MODEL NAME	COSMO G-2,CB-1		8	August ,2005		1513	E4 CLIP-ON-WASHER
FACTORY MODEL	462x0 , 462x1 , 462x2			MARCH, 2008		1520	E3 CLIP-ON-WASHER
ORIGINAL ISSUE	JULY , 2005	SERIAL NO.				32949	WASHER



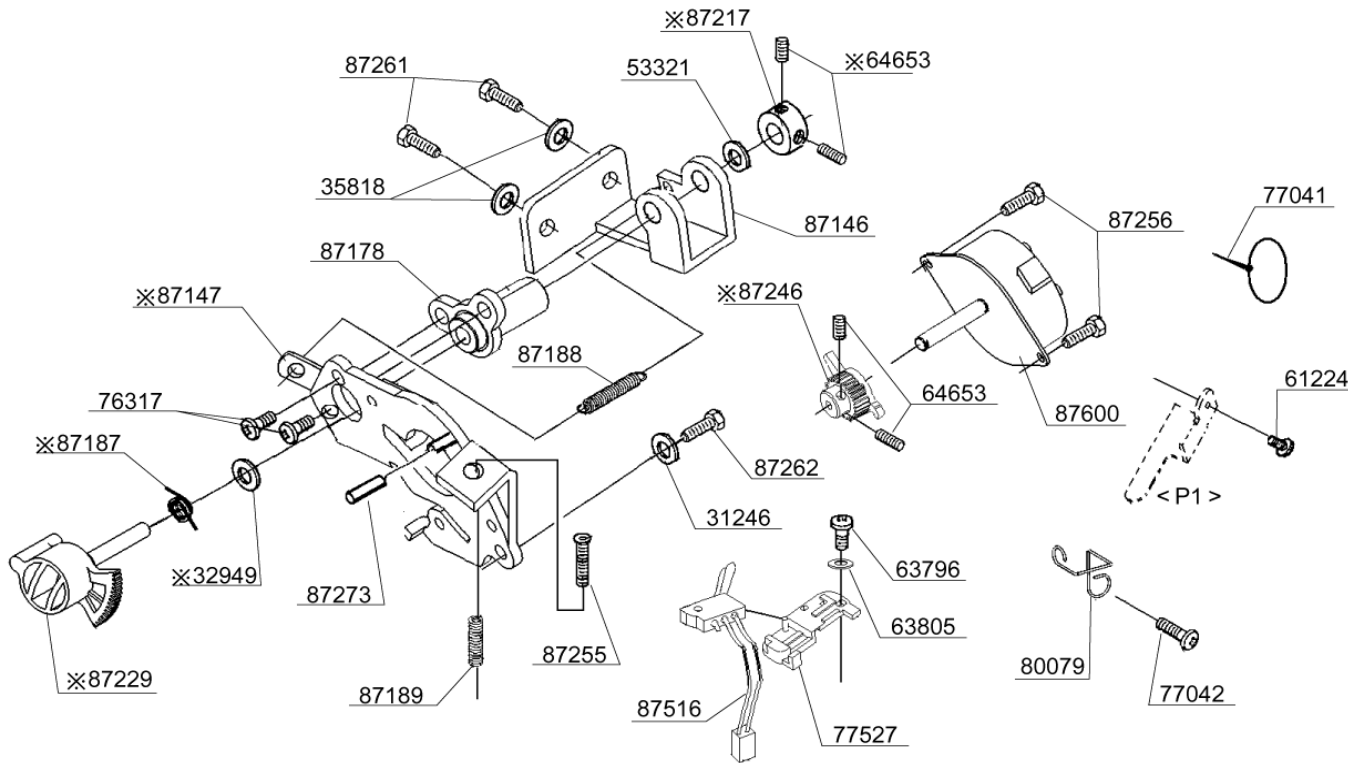
PART NO.	DESCRIPTION
1513	E4 CLIP-ON-WASHER
1520	E3 CLIP-ON-WASHER
32949	WASHER
51058	RETAINER SET
61221	M4 PHILLIPS SCREW
64653	M3 SCREW
66725	M4 SCREW
73299	M4 TORQUE NUT
73900	M3 PHILLIPS SCREW
75274	M4 PHILLIPS SCREW
76132	SHAFT
77042	M4 PHILLIPS SCREW
85252	WASHER
87103	FEED DOG BASE
87104	FEED DOG BASE SUPPORT
87105	FEED DOG
87122	SUPPORT PLATE
87145	SECURING BRACKET
87174	FORKED CRANK
87186	TORSION SPRING
87202	SHAFT
87203	SHAFT
87206	PIN
87208	BALL HEADED PIN
87210	PIN
87226	VERTICAL FEED BLOCK
87232	M6 STUD SCREW
87262	M3 CP SCREW
87268	M6 NUT
87269	WASHER
87433	COMPRESSION SPRING

BUYER'S MODEL NO.	7462	SECTION	PAGE	REVISION	REMARKS
BUYER'S MODEL NAME	COSMO G-2,CB-1		<b>9-1</b>		
FACTORY MODEL	462x0				
ORIGINAL ISSUE	JULY, 2005	SERIAL NO.			



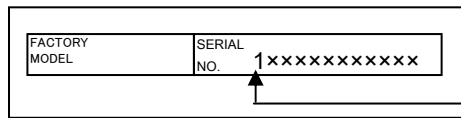
NOTE : PARTS NUMBER WITH ※ MARKS ARE FOR MACHINES SERIAL NUMBERS WITH "0" AT FIRST DIGIT.

PART NO.	DESCRIPTION
31246	WASHER
※32949	WASHER
35818	WASHER
53321	THRUST WASHER
61224	M4 PHILLIPS SCREW
63796	M3 SCREW
63805	WASHER
64653	M3 SCREW
76317	M3 PHILLIPS SCREW
77041	UNITY FASTENER
77042	M4 PHILLIPS SCREW
77527	SENSOR COVER
80079	CORD GUIDE
87146	BRACKET
※87147	STEPPING MOTOR BRACKET
87178	FEED REGULATOR SHAFT METAL BUSH
※87187	TORSION SPRING
87188	EXTENSION SPRING
87189	COMPRESSION SPRING
※87217	COLLAR
※87229	FEED REGULATOR
※87246	PINION GEAR
87255	M4 BOLT
87256	M3 PHILLIPS SCREW
87261	CP BOLT
87262	M3 CP SCREW
87273	PIN
87500	STEPPING MOTOR
87516	SWITCH HARNESS

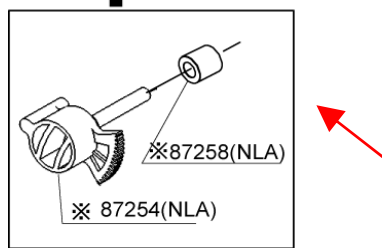
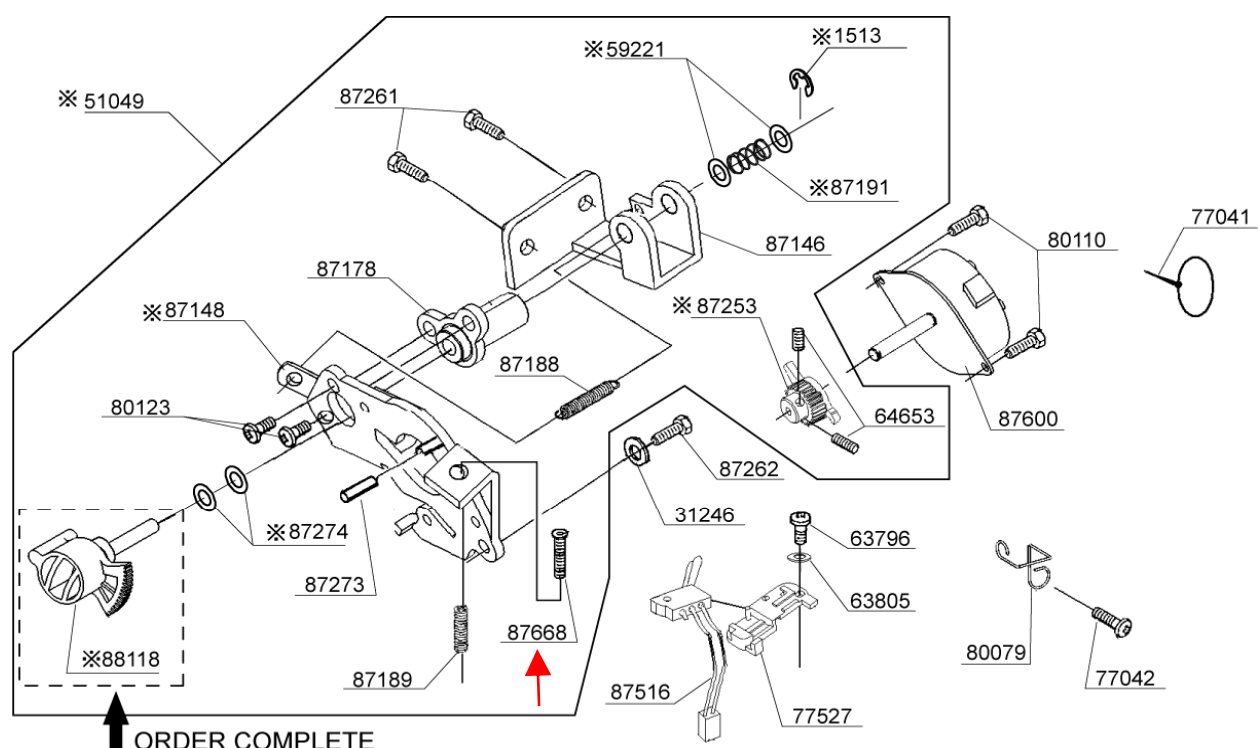


BUYER'S MODEL NO.	7462	SECTION	PAGE	REVISION	REMARKS
BUYER'S MODEL NAME	COSMO G-2,CB-1		<b>9-2</b>	MARCH, 2008	
FACTORY MODEL	462x1 , 462x2				
ORIGINAL ISSUE	JULY , 2005	SERIAL NO.			

PART NO.	DESCRIPTION
31246	WASHER
63796	M3 SCREW
63805	WASHER
64653	M3 SCREW
77041	UNITY FASTENER
77042	M4 PHILLIPS SCREW
77527	SENSOR COVER
80079	CORD GUIDE
80110	M3 CP SCREW
80123	M3 SCREW
87146	BRACKET
87178	FEED REGULATOR SHAFT METAL BUSH
87188	EXTENSION SPRING
87189	COMPRESSION SPRING
87261	CP BOLT
87262	M3 CP SCREW
87273	PIN
87516	SWITCH HARNESS
87600	STEPPING MOTOR
87668	M4 BOLT
※1513	E4 CLIP-ON-WASHER
※51049	FEED REGULATOR UNIT
※59221	WASHER
※87148	STEPPING MOTOR BRACKET
※87191	COMPRESSION SPRING
※87253	PINION GEAR
※87254	FEED REGULATOR (NLA)→ ORDER COMPLETE 88118
※87258	COLLAR (NLA)→ ORDER COMPLETE 88118
※87274	WASHER
※88118	FEED REGULATOR



NOTE : PARTS NUMBER WITH ※ MARKS ARE FOR MACHINES SERIAL NUMBERS WITH "1" OR "2" AT FIRST DIGIT



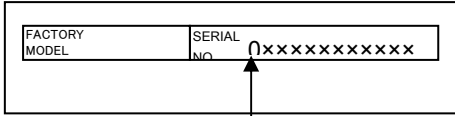






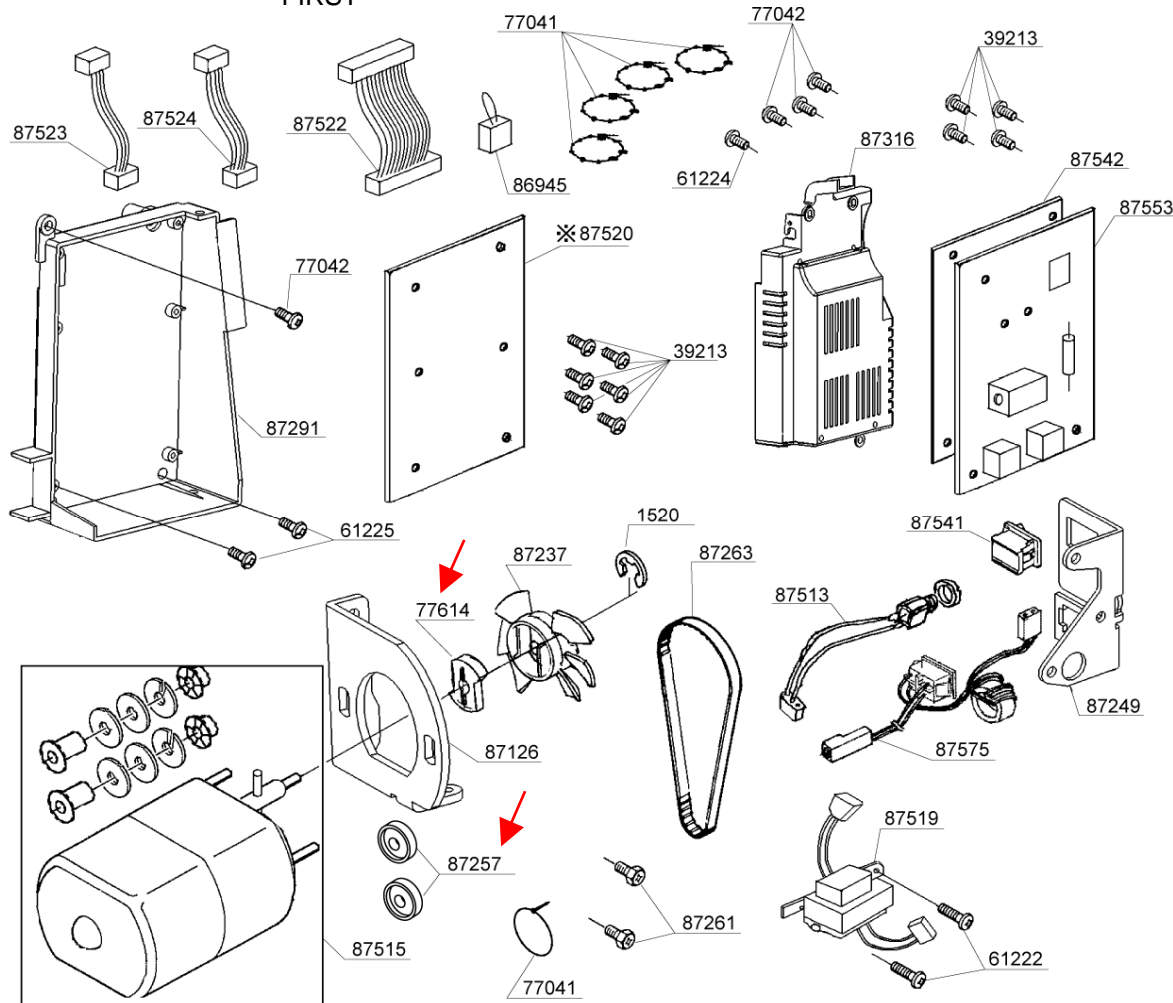
BUYER'S MODEL NO.	7462	SECTION	PAGE	REVISION	REMARKS
BUYER'S MODEL NAME	COSMO G-2,CB-1		<b>10-3</b>	MARCH, 2008	
FACTORY MODEL	462x0				
ORIGINAL ISSUE	JULY, 2005	SERIAL NO.			

**230V**



NOTE : PARTS NUMBER WITH ※ MARKS ARE FOR MACHINES SERIAL NUMBERS WITH "0" AT FIRST DIGIT.

FIRST



PART NO.	DESCRIPTION
1520	E3 CLIP-ON-WASHER
39213	M3 SCREW
61222	M4 PHILLIPS SCREW
61224	M4 PHILLIPS SCREW
61225	M4 PHILLIPS SCREW
77041	UNITY FASTENER
77042	M4 PHILLIPS SCREW
77614	GEAR CLUTCH
86945	JUMPER HARNESS
87126	MAIN MOTOR BRACKET
87237	MOTOR FAN
87249	SWITCH BRACKET
87257	BUSH
87261	CP BOLT
87263	DRIVING BELT
87291	CPU CIRCUIT BOARD BOX
87316	AC CIRCUIT BOARD BOX
87513	PIN-JACK HARNESS
87515	MAIN MOTOR
87519	TRANSFORMER
87522	13P CORD HARNESS
87523	4P CORD HARNESS
87524	5P CORD HARNESS
87541	SWITCH
87542	INSULATION SHEET
87553	CIRCUIT BOARD
87575	INLET HARNESS
※87520	CPU CIRCUIT BOARD



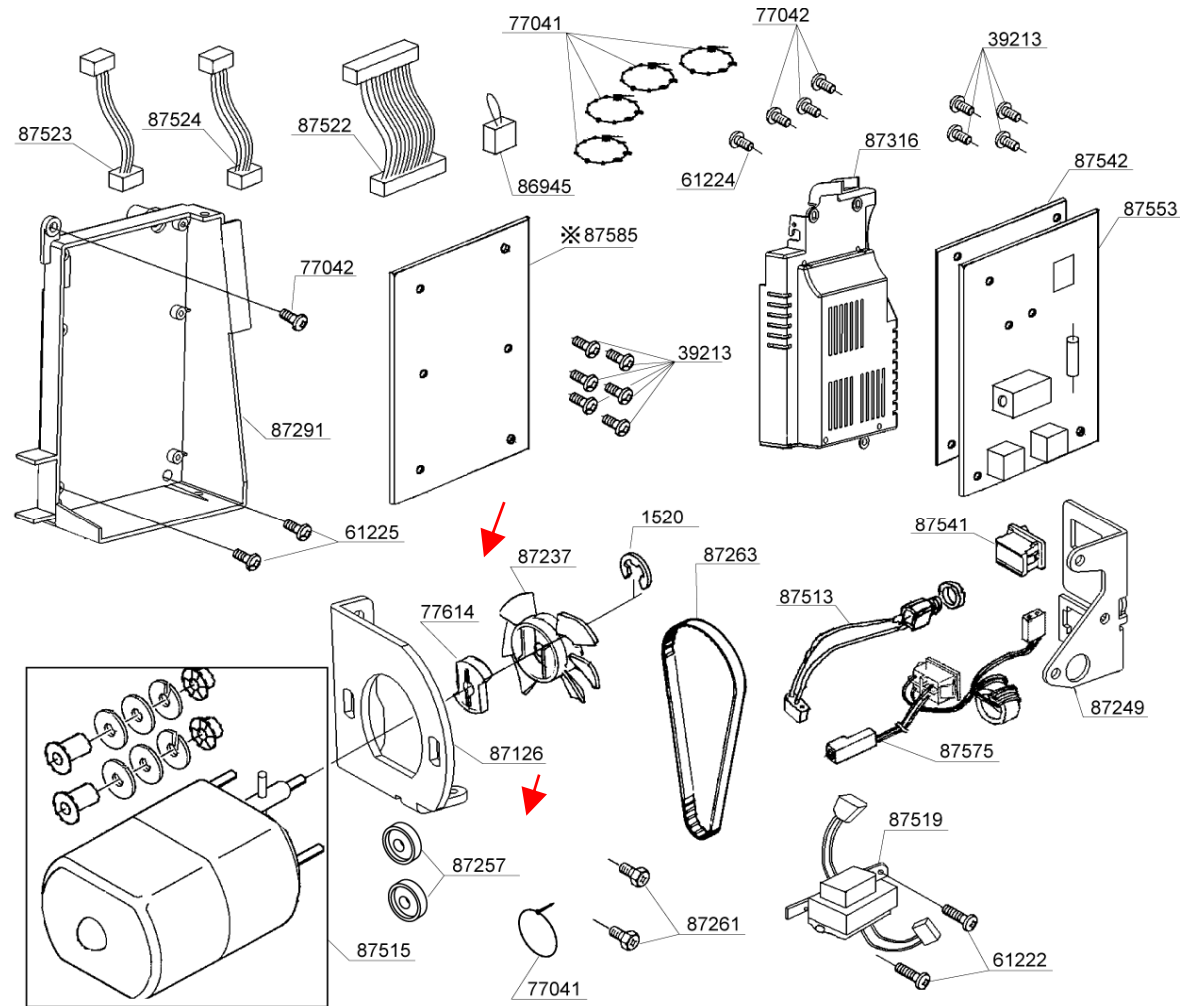
BUYER'S MODEL NO.	7462	SECTION	PAGE	REVISION	REMARKS
BUYER'S MODEL NAME	COSMO G-2,CB-1		<b>10-4</b>	MARCH, 2008	
FACTORY MODEL	462x1 , 462x2				
ORIGINAL ISSUE	JULY , 2005	SERIAL NO.			

**230V**

FACTORY MODEL	SERIAL NO.
	1xxxxxxxxxx

FIRST DIGIT  
1 OR 2

NOTE : PARTS NUMBER WITH ※ MARKS ARE FOR MACHINES SERIAL NUMBERS WITH "1" OR "2" AT FIRST DIGIT

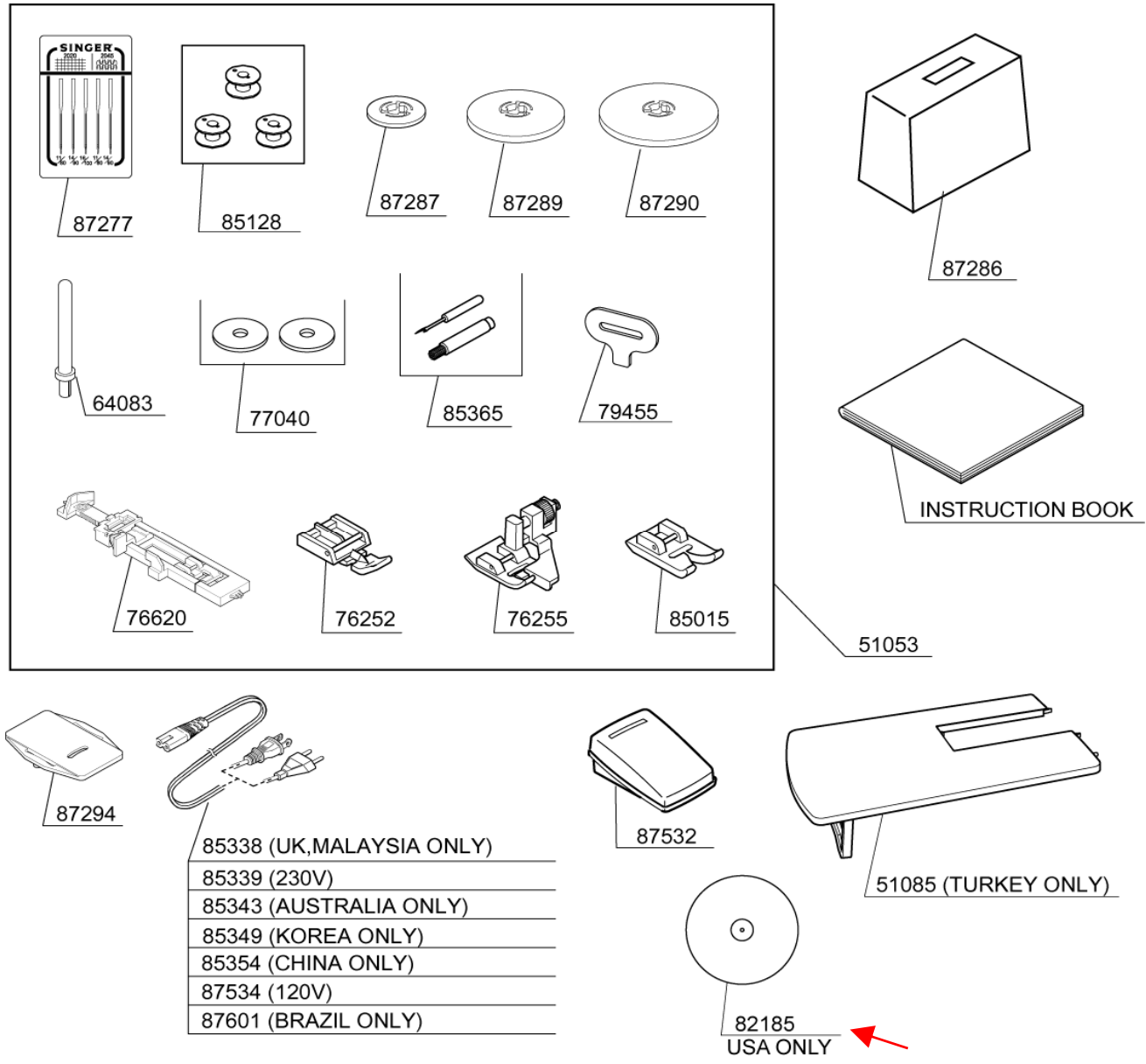


PART NO.	DESCRIPTION
1520	E3 CLIP-ON-WASHER
39213	M3 SCREW
61222	M4 PHILLIPS SCREW
61224	M4 PHILLIPS SCREW
61225	M4 PHILLIPS SCREW
77041	UNITY FASTENER
77042	M4 PHILLIPS SCREW
77614	GEAR CLUTCH
86945	JUMPER HARNESS
87126	MAIN MOTOR BRACKET
87237	MOTOR FAN
87249	SWITCH BRACKET
87257	BUSH
87261	CP BOLT
87263	DRIVING BELT
87291	CPU CIRCUIT BOARD BOX
87316	AC CIRCUIT BOARD BOX
87513	PIN-JACK HARNESS
87515	MAIN MOTOR
87519	TRANSFORMER
87522	13P CORD HARNESS
87523	4P CORD HARNESS
87524	5P CORD HARNESS
87541	SWITCH
87542	INSULATION SHEET
87553	CIRCUIT BOARD
87575	INLET HARNESS
※87585	CPU CIRCUIT BOARD





BUYER'S MODEL NO.	7462	SECTION	PAGE	REVISION	REMARKS	PART NO.	DESCRIPTION
BUYER'S MODEL NAME	COSMO G-2,CB-1		<b>13</b>	MARCH, 2008		51053	ACCESSORY SET
FACTORY MODEL	462x0 , 462x1 , 462x2			MAY ,2008		51085	EXTENSION TABLE
ORIGINAL ISSUE	JULY , 2005	SERIAL NO.				64083	SPOOL PIN



PART NO.	DESCRIPTION
51053	ACCESSORY SET
51085	EXTENSION TABLE
64083	SPOOL PIN
76252	ZIPPER FOOT
76255	BLIND STITCH FOOT
76620	BUTTONHOLE FOOT
77040	SPOOL PIN DISC
77234	INSTRUCTION BOOK (Eng/Fre/Spa)
77238	INSTRUCTION BOOK (Ita/Dut/Ger)
77246	INSTRUCTION BOOK (Fin/Estonian/Portuguese)
77259	INSTRUCTION BOOK (Korea)
77268	INSTRUCTION BOOK (Fre/Gree/Eng)
77271	INSTRUCTION BOOK (Dan/Swe/Nor)
77364	INSTRUCTION BOOK (Mexico)
77366	INSTRUCTION BOOK (Turk/Eng/Fre)
79455	LARGE SCREW DRIVER
82020	INSTRUCTION BOOK (Russ)
85015	SATIN FOOT
85128	BOBBIN
85338	POWER CORD (UK ONLY)
85339	POWER CORD (230V)
85343	POWER CORD (AUSTRALIA ONLY)
85349	POWER CORD (KOREA ONLY)
85354	POWER CORD (CHINA ONLY)
85365	BUTTONHOLE OPENER / BRUSH
87277	NEEDLE SET
87286	VINYL COVER
87287	SPOOL PIN CAP (MINI)
87289	SPOOL PIN CAP (SMALL)
87290	SPOOL PIN CAP (LARGE)
87294	DARNING PLATE
87532	FOOT CONTROL (PIN-JACK TYPE)
87534	POWER CORD (120V)
87601	POWER CORD (BRAZIL ONLY)
82185	QUICK START GUIDE DVD (USA ONLY)

)

|