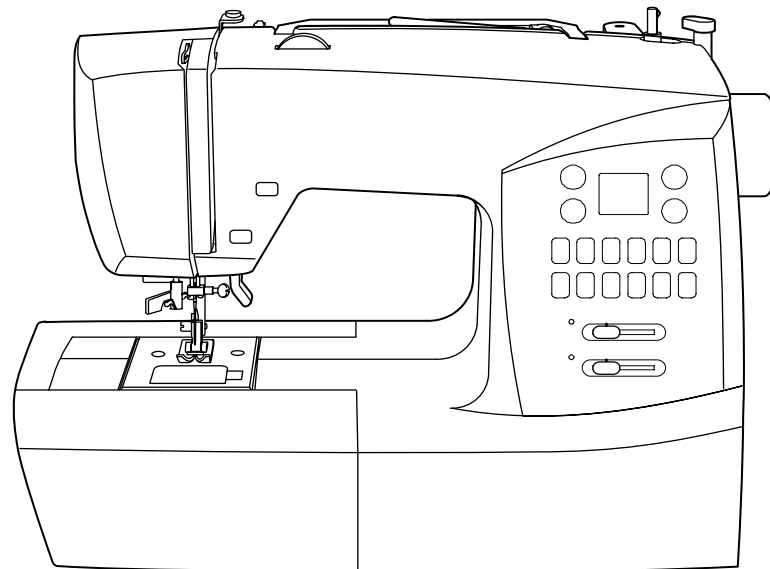


REFER TO IMPORTANT NOTICE BELOW

PARTS LIST FOR

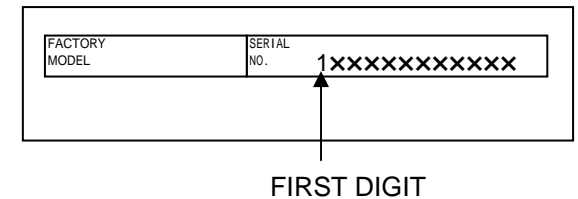
SINGER | Ingenuity™ 7436



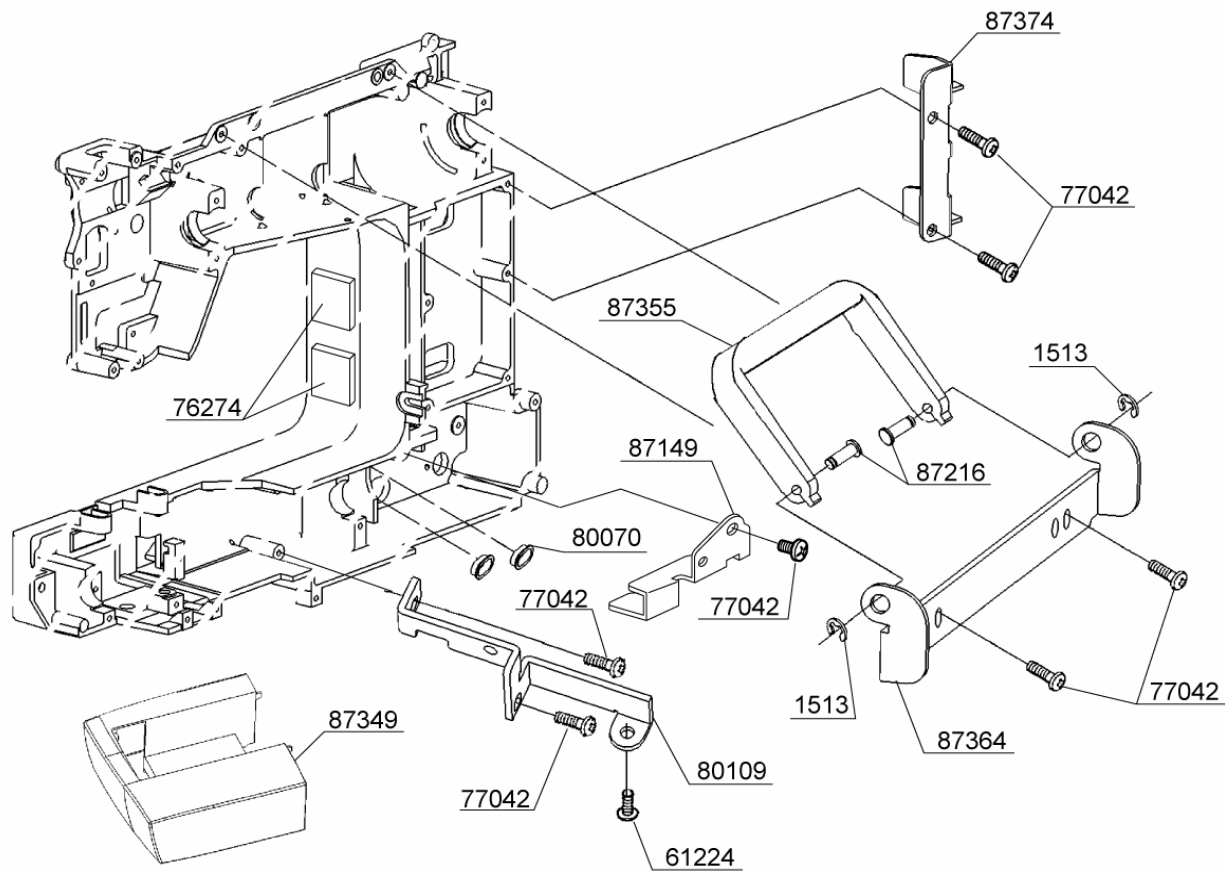
IMPORTANT:

WHEN ORDERING THE PARTS
ALWAYS CHECK THE SERIAL
NUMBER OF THE MACHINE.

FIRST DIGIT OF THE SERIAL
NUMBER MUST MATCH WITH
THE LAST DIGIT OF THE FACTORY
MODEL ABOVE.

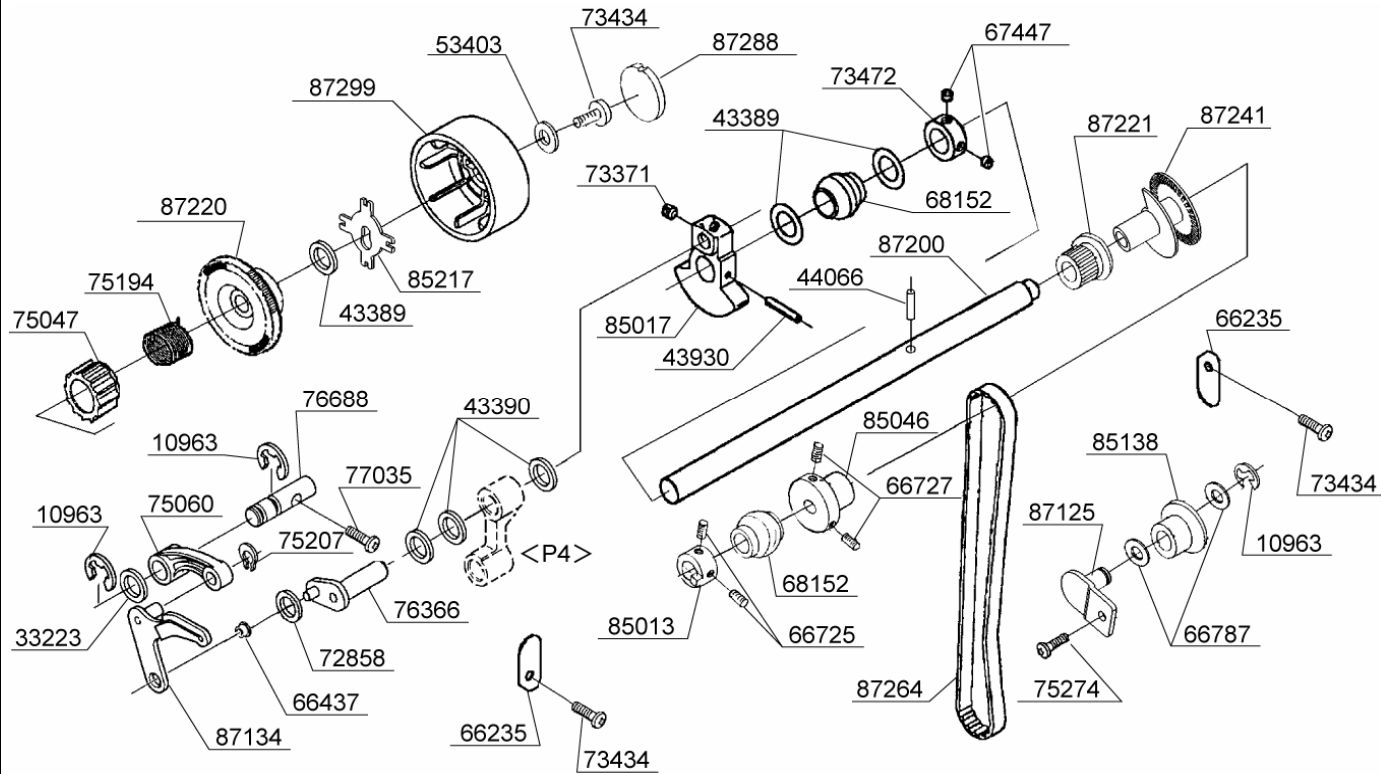


BUYER'S MODEL NO.	7436	SECTION	PAGE	REVISION	REMARKS	PART NO.	DESCRIPTION
BUYER'S MODEL NAME	COSMO J-1,CB-3.5		1			1513	E4 CLIP-ON-WASHER
FACTORY MODEL	CA43661					61224	M4 PHILLIPS SCREW
ORIGINAL ISSUE	DECEMBER , 2005	SERIAL NO.				76274	SPACER



PART NO.	DESCRIPTION
1513	E4 CLIP-ON-WASHER
61224	M4 PHILLIPS SCREW
76274	SPACER
77042	M4 PHILLIPS SCREW
80070	CORD GUIDE
80109	BRACKET
87149	BRACKET
87216	PIN
87349	ACC. BOX
87355	HANDLE
87364	HANDLE BRACKET
87374	BRACKET

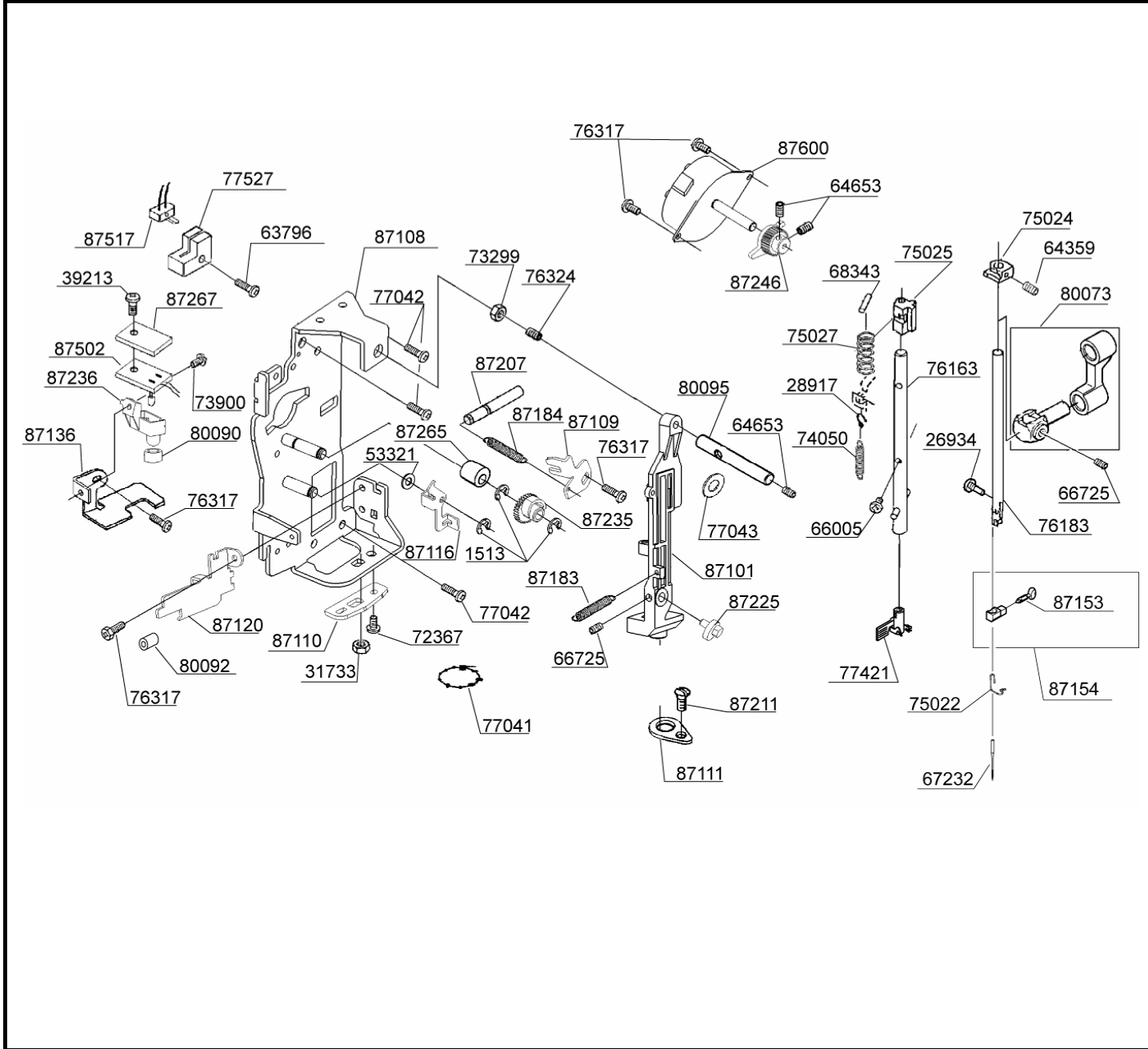
BUYER'S MODEL NO.	7436	SECTION	PAGE	REVISION	REMARKS	PART NO.	DESCRIPTION
BUYER'S MODEL NAME	COSMO J-1,CB-3.5		2			10963	E6 CLIP-ON-WASHER
FACTORY MODEL	CA43661					33223	WASHER
ORIGINAL ISSUE	DECEMBER, 2005					43389	THRUST WASHER
		SERIAL NO.				43930	SPRING PIN
						44066	SPRING PIN



66787	WASHER
67447	M5 SCREW
68152	BALL BUSH
72858	WASHER
73371	M6 SCREW
73434	M4 PHILLIPS SCREW
73472	COLLAR
75047	CLUTCH
75060	TAKE-UP LEVER CRANK
75194	TORSION SPRING
75207	CS-CLIP
75274	M4 PHILLIPS SCREW
76366	CRANK SHAFT
76688	SHAFT
77035	M4 PHILLIPS SCREW
85013	POSITIONING COLLAR
85017	BALANCER
85046	COLLAR
85138	TENSION ROLLER
85217	RETAINER
87125	IDLER PULLEY BRACKET
87134	TAKE-UP LEVER
87200	MAIN SHAFT
87220	BELT PULLEY
87221	UPPER TIMING BELT GEAR
87241	ENCODER
87264	TIMING BELT
87288	PULLEY CAP
87299	PULLEY

BUYER'S MODEL NO.	7436	SECTION	PAGE	REVISION	REMARKS	PART NO.	DESCRIPTION
BUYER'S MODEL NAME	COSMO J-1,CB-3.5		3			10963	E6 CLIP-ON-WASHER
FACTORY MODEL	CA43661					76317	M3 PHILLIPS SCREW
ORIGINAL ISSUE	DECEMBER , 2005					77042	M4 PHILLIPS SCREW
		SERIAL NO.				77053	M3 PHILLIPS SCREW
<p>The diagram shows an exploded view of a bobbin winder unit. Key components include: <ul style="list-style-type: none"> 87361: Bobbin winder unit 10963: E6 clip-on-washer 77042: M4 Phillips screw 87182: Retainer 87180: Extension spring 87214: M3 shoulder screw 87127: Bobbin winder bracket 87128: Mounting bracket 76317: M3 Phillips screw 87506: Switch harness 87129: Retainer 85274: M2 screw 87139: Mounting bracket 87527: Photo sensor circuit board 87242: Insulation sheet 77053: M3 Phillips screw </p>						87127	BOBBIN WINDER BRACKET
						87128	MOUNTING BRACKET
						87129	RETAINER
						87139	MOUNTING BRACKET
						87180	EXTENSION SPRING
						87182	TORSION SPRING
						87214	M3 SHOULDER SCREW
						87242	INSULATION SHEET
						87361	BOBBIN WINDER UNIT
						87506	SWITCH HARNESS
						87527	PHOTO SENSOR CIRCUIT BOARD

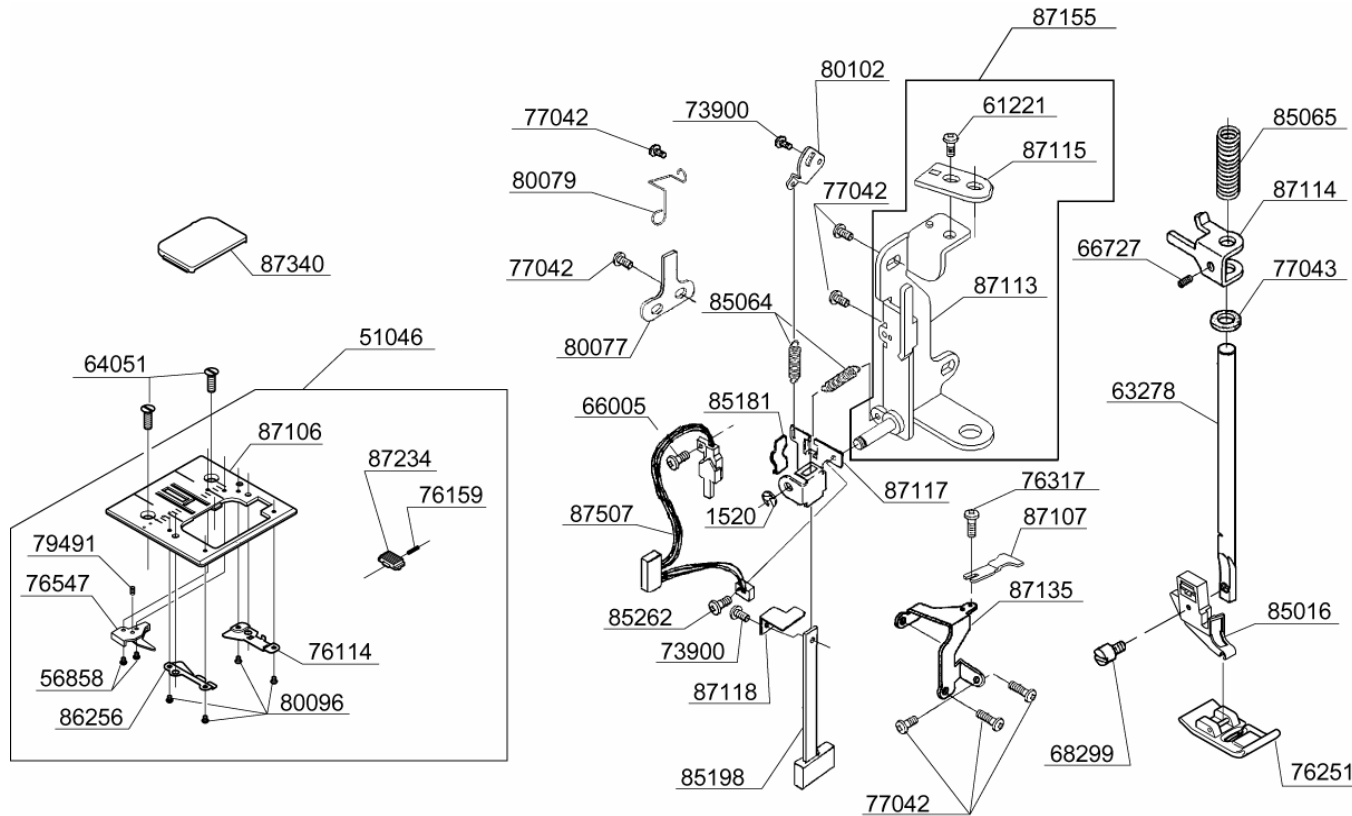
BUYER'S MODEL NO.	7436	SECTION	PAGE	REVISION	REMARKS	PART NO	DESCRIPTION
BUYER'S MODEL NAME	COSMO J-1,CB-3.5		4			1513	E4 CLIP-ON-WASHER
FACTORY MODEL	CA43661					26934	#8 SCREW
ORIGINAL ISSUE	DECEMBER, 2005	SERIAL NO.				28917	HOOK FOR SPRING



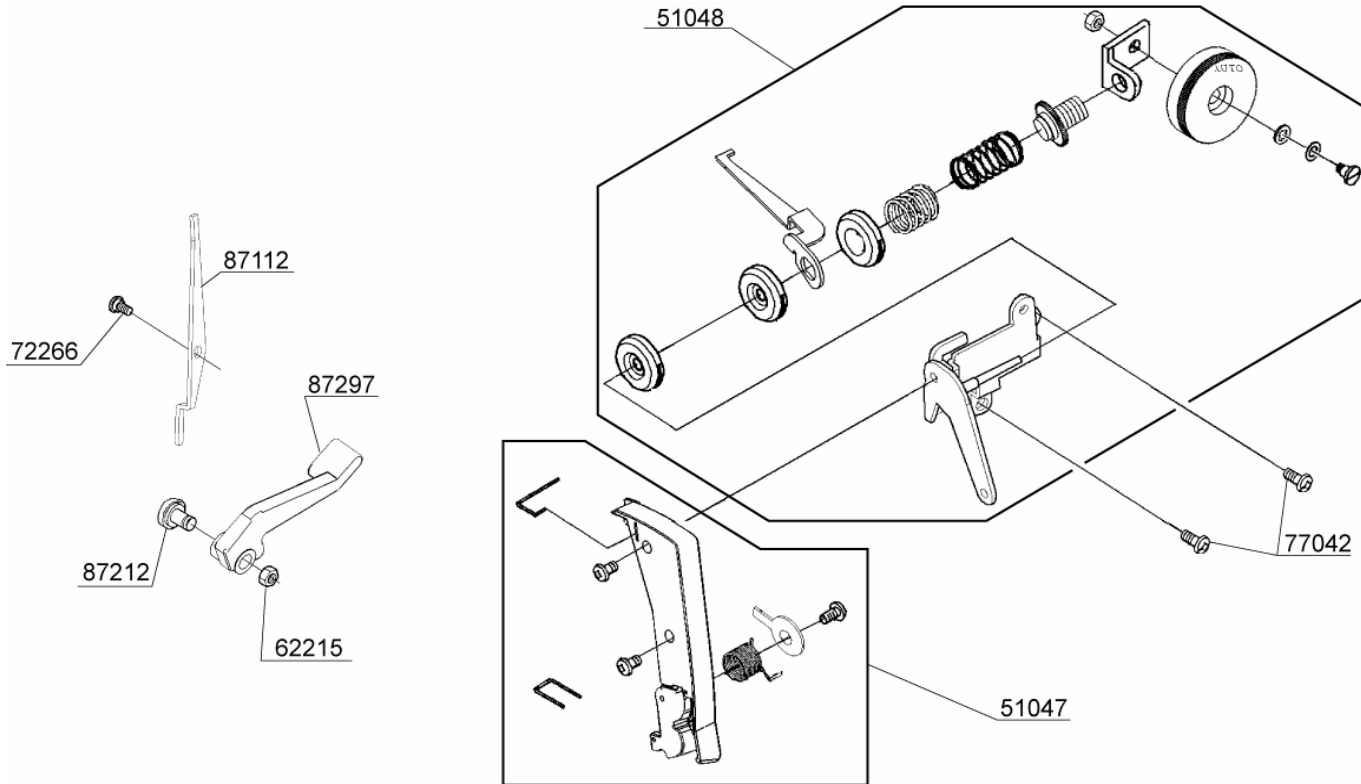
PART NO	DESCRIPTION
1513	E4 CLIP-ON-WASHER
26934	#8 SCREW
28917	HOOK FOR SPRING
31733	M3 NUT
39213	M3 SCREW
53321	THRUST WASHER
63796	M3 SCREW
64359	M4 SCREW
64653	M3 SCREW
66005	M2 PHILLIPS SCREW
66725	M4 SCREW
67232	NEEDLE
68343	PIN
72367	M4 CP SCREW
73299	M4 TORQUE NUT
73900	M3 PHILLIPS SCREW
74050	EXTENSION SPRING
75022	THREAD GUIDE
75024	STOPPER
75025	GUIDE BLOCK
75027	COMPRESSION SPRING
76163	THREADER SHAFT SET
76183	NEEDLE BAR
76317	M3 PHILLIPS SCREW
76324	M4 SCREW
77041	UNITY FASTENER
77042	M4 PHILLIPS SCREW
77043	FELT
77421	THREADER ASSEMBLY
77527	SENSOR COVER
80073	NEEDLE BAR CRANK SET
80090	VINYL TUBE
80092	VINYL TUBE
80095	STRAIGHT PIN
87101	NEEDLE BAR SUPPORT
87108	NEEDLE BAR SUPPORT BRACKET
87109	SECURING PLATE
87110	NEEDLE BAR ADJUSTING PLATE
87111	NEEDLE BAR SWING BRACKET
87116	BELL CLANK FOR ZIGZAG
87120	THREAD GUIDE PLATE
87136	L-R LIMITER
87153	NEEDLE CLAMP SCREW
87154	NEEDLE CLAMP SET
87183	SPRING
87184	SPRING
87207	STRAIGHT PIN
87211	M3 SCREW
87225	ECCENTRIC CAM
87235	ZIGZAG CAM WITH GEAR
87236	LED LIGHT COVER
87246	PINION GEAR
87265	SPACER
87267	INSULATION SHEET
87502	LED LIGHT CIRCUIT BOARD
87517	SWITCH HARNESS FOR ZIGZAG
87600	STEPPING MOTOR

BUYER'S MODEL NO.	7436	SECTION	PAGE	REVISION	REMARKS
BUYER'S MODEL NAME	COSMO J-1,CB-3.5		5		
FACTORY MODEL	CA43661				
ORIGINAL ISSUE	DECEMBER , 2005	SERIAL NO.			

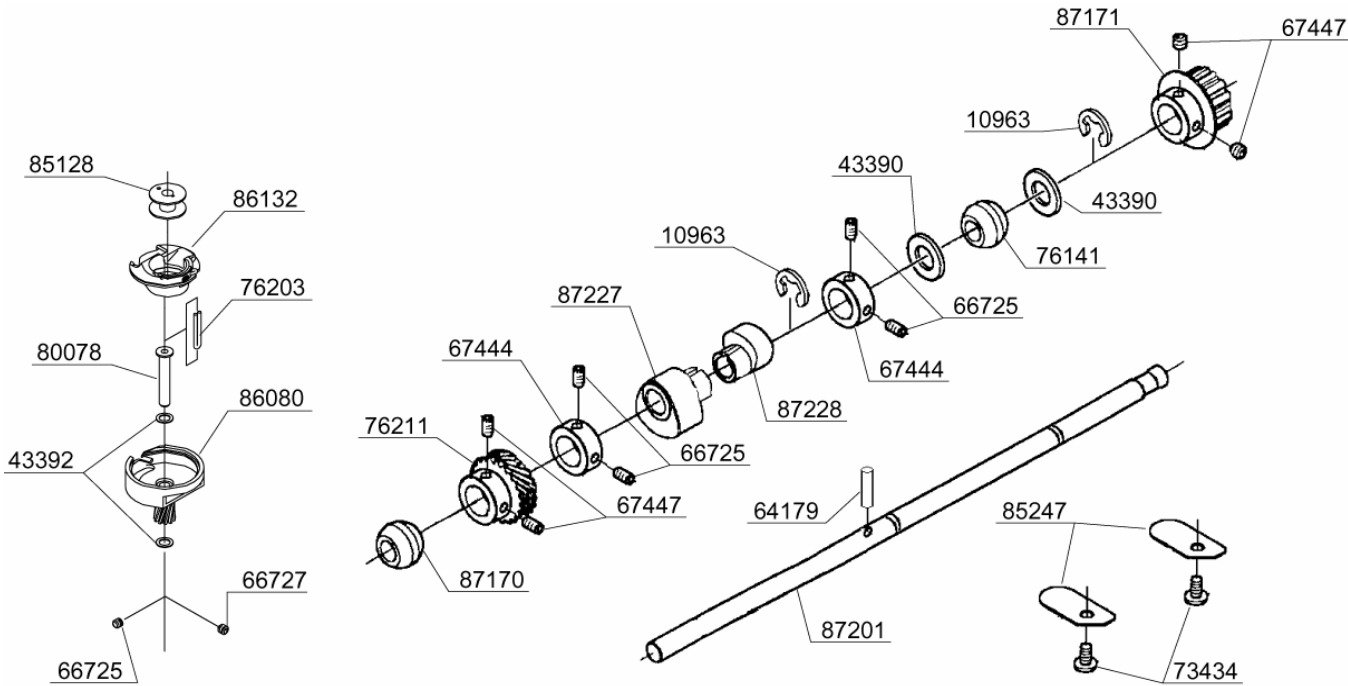
PART NO.	DESCRIPTION
1520	E3 CLIP-ON-WASHER
51046	NEEDLE PLATE SET
56858	M2 PHILLIPS SCREW
61221	M4 PHILLIPS SCREW
63278	PRESSER BAR
64051	M4 SCREW
66005	M2 PHILLIPS SCREW
66727	M4 SCREW
68299	#7 SCREW FOR SHANK
73900	M3 PHILLIPS SCREW
76114	COVER GUIDE (R)
76159	COMPRESSION LEVER
76251	ZIGZAG PRESSER FOOT
76317	M3 PHILLIPS SCREW
76547	THREAD CONTROL PLATE
77042	M4 PHILLIPS SCREW
77043	FELT
79491	SCREW
80077	PRESSER BAR GUIDE SECURING PLATE
80079	CORD GUIDE
80096	M2 PHILLIPS SCREW
80102	CONTROL PLATE
85016	PRESSER FOOT HOLDER
85064	EXTENSION SPRING
85065	COMPRESSION SPRING
85181	LEAF SPRING
85198	BH PLATE (A)
85262	M2 SCREW
86256	COVER GUIDE (L)
87106	NEEDLE PLATE
87107	BOBBIN CASE STOPPER
87113	PRESSURE BAR BRACKET
87114	PRESSURE BAR GUIDE
87115	PRESSURE SUPPORT PLATE
87117	BH PLATE B
87118	BH PLATE C
87135	BRACKET
87155	PRESSURE BAR BRACKET SET
87234	RELEASE LEVER
87340	NEEDLE COVER PLATE
87507	BH SWITCH HARNESS



BUYER'S MODEL NO.	7436	SECTION	PAGE	REVISION	REMARKS	PART NO.	DESCRIPTION
BUYER'S MODEL NAME	COSMO J-1,CB-3.5		6			51047	THREAD GUIDE PLATE ASSY
FACTORY MODEL	CA43661					51048	TENSION ASSY
ORIGINAL ISSUE	DECEMBER , 2005	SERIAL NO.				62215	M4 NUT
						72266	M4 STUD SCREW
						77042	M4 PHILLIPS SCREW
						87112	TENSION RELEASE LEVER
						87212	M4 SCREW
						87297	PRESSURE BAR LIFTER

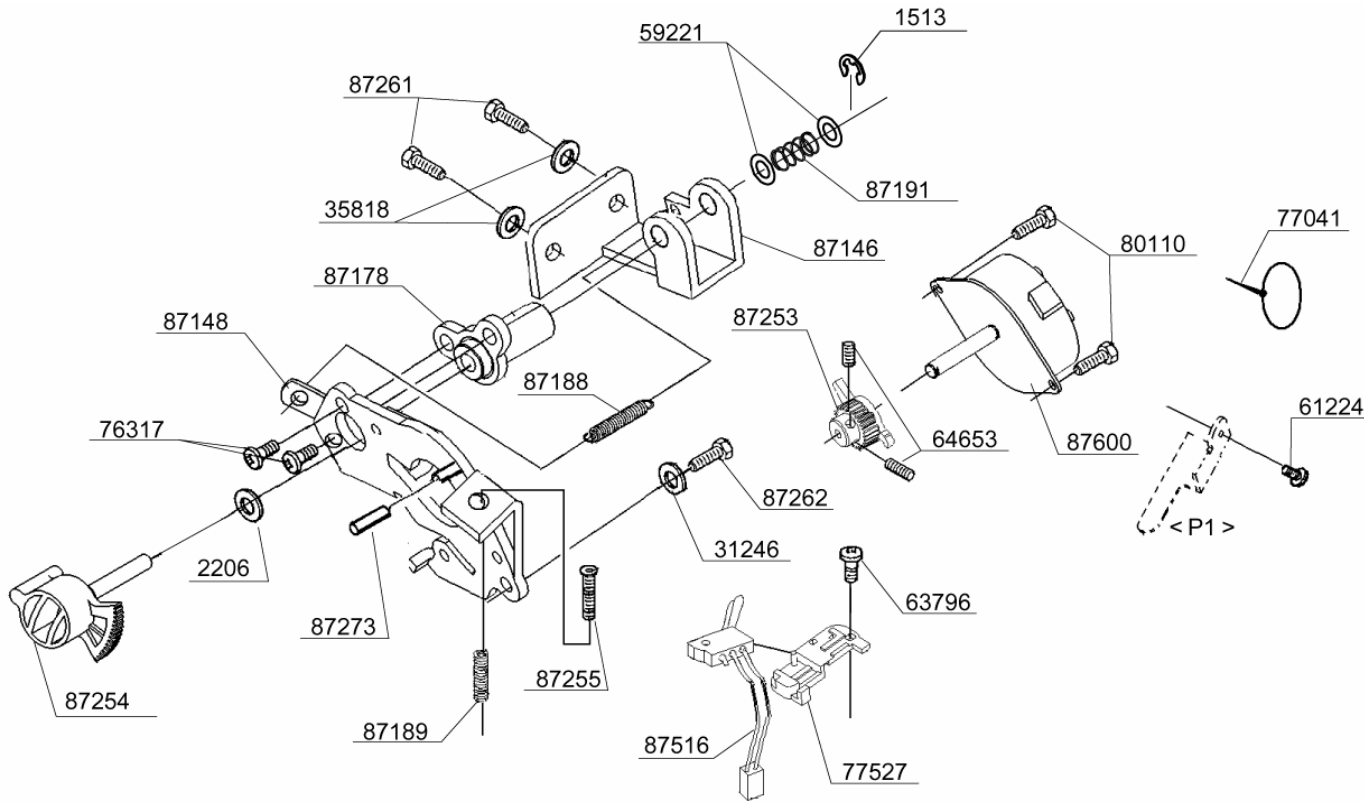


BUYER'S MODEL NO.	7436	SECTION	PAGE	REVISION	REMARKS	PART NO.	DESCRIPTION
BUYER'S MODEL NAME	COSMO J-1,CB-3.5		7			10963	E6 CLIP-ON-WASHER
FACTORY MODEL	CA43661					43390	THRUST WASHER
ORIGINAL ISSUE	DECEMBER , 2005	SERIAL NO.				43392	THRUST WASHER



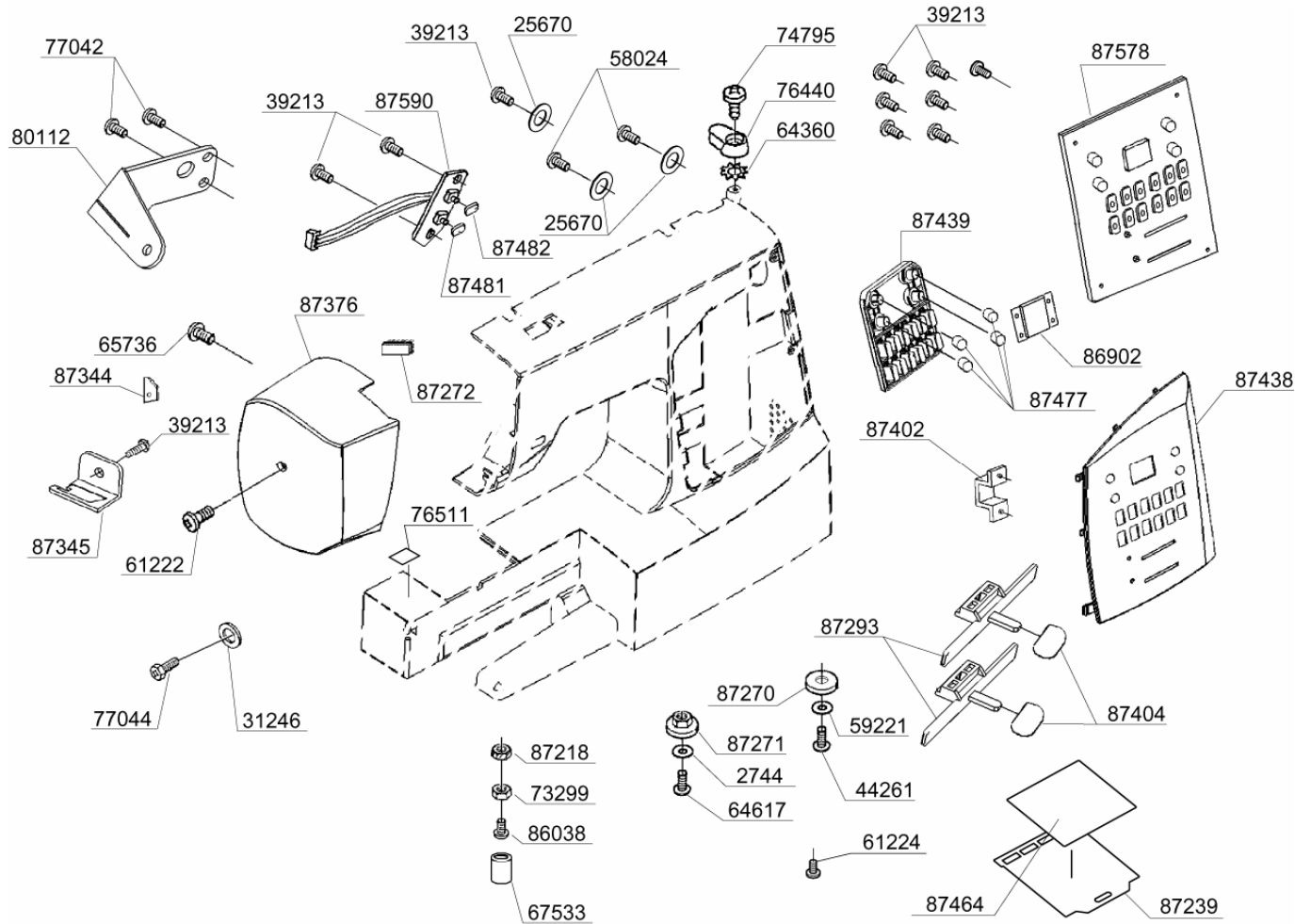
10963	E6 CLIP-ON-WASHER
43390	THRUST WASHER
43392	THRUST WASHER
64179	SPRING PIN
66725	M4 SCREW
66727	M4 SCREW
67444	COLLAR
67447	M5 SCREW
73434	M4 PHILLIPS SCREW
76141	BALL METAL
76203	OILING CORD
76211	BEVEL GEAR
80078	SHUTTLE RACE SHAFT
85128	BOBBIN
85247	SECURING PLATE
86080	SHUTTLE RACE
86132	BOBBIN CASE
87170	BALL METAL
87171	TIMING BELT GEAR (LOWER)
87201	LOWER STRAIGHT SHAFT
87227	LIFTING CAM
87228	FEED CAM

BUYER'S MODEL NO.	7436	SECTION	PAGE	REVISION	REMARKS	PART NO.	DESCRIPTION
BUYER'S MODEL NAME	COSMO J-1,CB-3.5		9			1513	E4 CLIP-ON-WASHER
FACTORY MODEL	CA43661					2206	WASHER
ORIGINAL ISSUE	DECEMBER , 2005					31246	WASHER
		SERIAL NO.				35818	WASHER
						59221	WASHER
						61224	M4 PHILLIPS SCREW
						63796	M3 SCREW
						64653	M3 SCREW
						76317	M3 PHILLIPS SCREW
						77041	UNITY FASTENER
						77527	SENSOR COVER
						80079	CORD GUIDE
						80110	M3 PHILLIPS SCREW
						87146	BRACKET
						87148	STEPPING MOTOR BRACKET
						87178	FEED REGULATOR SHAFT METAL BUSH
						87188	EXTENSION SPRING
						87189	COMPRESSION SPRING
						87253	PINION GEAR
						87254	FEED REGULATOR
						87255	M4 BOLT
						87261	CP BOLT
						87262	M3 CP SCREW
						87273	PIN
						87516	SWITCH HARNESS
						87600	STEPPING MOTOR



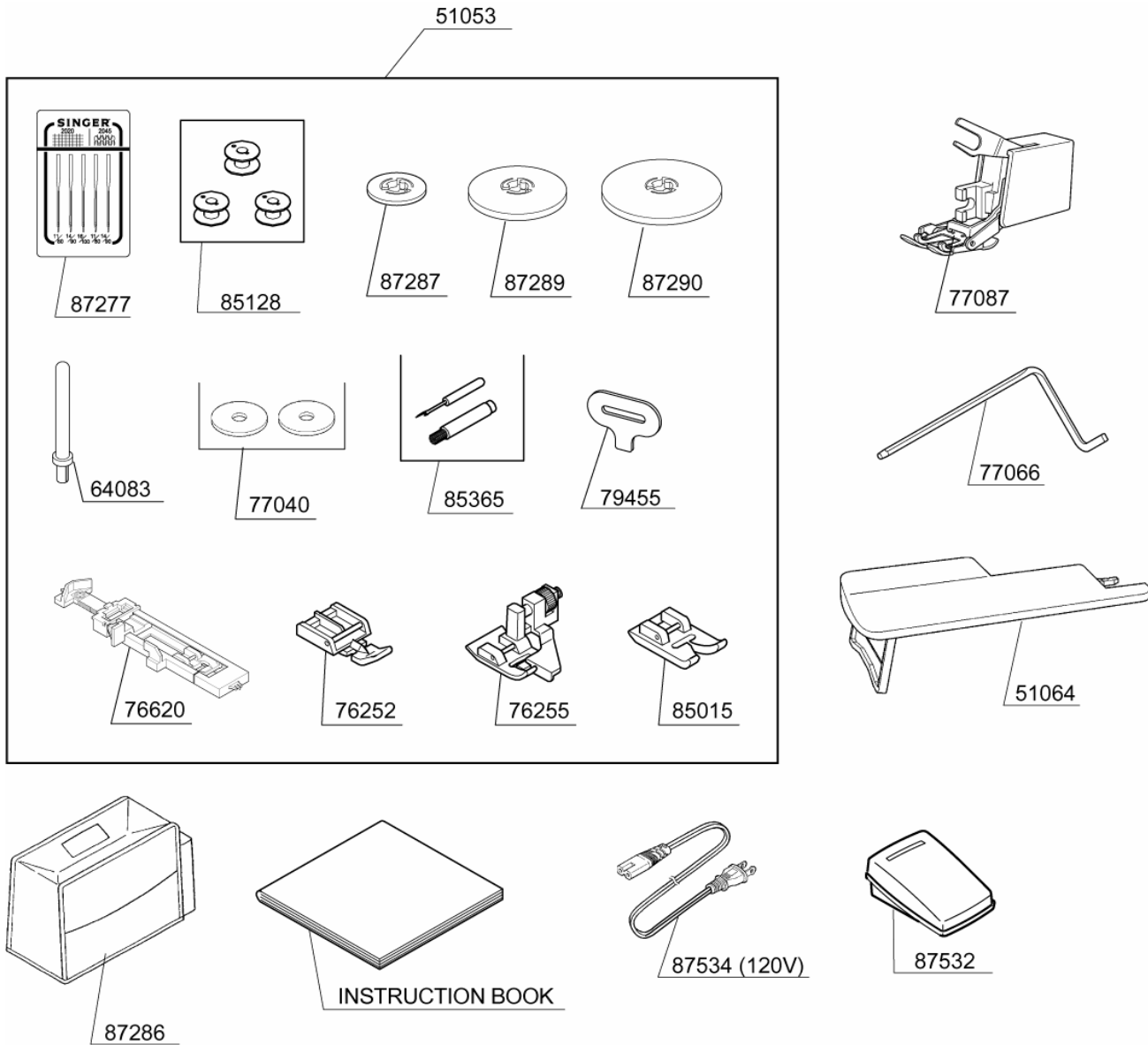
BUYER'S MODEL NO.	7436	SECTION	PAGE	REVISION	REMARKS	PART NO.	DESCRIPTION
BUYER'S MODEL NAME	COSMO J-1,CB-3.5		10			1520	E3 CLIP-ON-WASHER
FACTORY MODEL	CA43661					39213	M3 SCREW
ORIGINAL ISSUE	DECEMBER , 2005	SERIAL NO.				47181	TAPPING SCREW
						61222	M4 PHILLIPS SCREW
						61224	M4 PHILLIPS SCREW
						77035	M4 PHILLIPS SCREW
						77041	UNITY FASTENER
						77042	M4 PHILLIPS SCREW
						77042	M4 PHILLIPS SCREW
						77524	GEAR CLUTCH
						80081	SWITCH BRACKET
						80093	VINYL TUBE
						86945	JUMPER HARNESS
						87126	MAIN MOTOR BRACKET
						87237	MOTOR FAN
						87261	CP BOLT
						87263	DRIVING BELT
						87291	CPU CIRCUIT BOARD BOX
						87316	AC CIRCUIT BOARD BOX
						87510	MAIN MOTOR
						87513	PIN-JACK HARNESS
						87514	TRANSFORMER
						87522	13P CORD HARNESS
87523	4P CORD HARNESS						
87524	5P CORD HARNESS						
87529	4P CORD HARNESS						
87530	CIRCUIT BOARD						
87536	INLET HARNESS						
87541	SWITCH						
87542	INSULATION SHEET						
87585	CPU CIRCUIT BOARD						
						87515	MAIN MOTOR, 240 Volt

BUYER'S MODEL NO.	7436	SECTION	PAGE	REVISION	REMARKS	PART NO.	DESCRIPTION
BUYER'S MODEL NAME	COSMO J-1,CB-3.5		11			2744	WASHER
FACTORY MODEL	CA43661					25670	WASHER
ORIGINAL ISSUE	DECEMBER , 2005	SERIAL NO.				39213	M3 SCREW



PART NO.	DESCRIPTION
2744	WASHER
25670	WASHER
39213	M3 SCREW
44261	M4 SCREW
58024	TAPPING SCREW
59221	WASHER
61222	M4 PHILLIPS SCREW
61224	M4 PHILLIPS SCREW
64360	TOOTHED WASHER
64617	TAPPING SCREW
65736	M4 PHILLIPS SCREW
67533	RUBBER CUSHION
73299	M4 TORQUE NUT
74795	TAPPING SCREW
76440	BOBBIN WINDER LATCH
76511	SEAL
77042	M4 PHILLIPS SCREW
77044	M3 PHILLIPS SCREW
80112	FACE COVER BRACKET
86038	STUD SCREW
86902	INDICATOR WINDOW
87218	NUT
87239	PATTERN DRAWER
87270	RUBBER FOOT
87271	RUBBER FOOT
87272	BRUSH
87293	SLIDE LEVER
87344	BLADE
87345	BLADE FIXTURE
87376	FACE COVER
87402	LED PANEL
87404	KNOB
87438	CONTROL PANEL
87439	PATTERN SWITCH
87464	PATTERN SEAL
87477	BUTTON
87481	BUTTON
87482	BUTTON
87578	SWITCH CIRCUIT BOARD
87590	SWITCH HARNESS
31246	WASHER

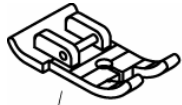
BUYER'S MODEL NO.	7436	SECTION	PAGE	REVISION	REMARKS	PART NO.	DESCRIPTION
BUYER'S MODEL NAME	COSMO J-1,CB-3.5		13			51053	ACCESSORY SET
FACTORY MODEL	CA43661					51064	EXTENSION TABLE W / STYROFOAM+CARTON
ORIGINAL ISSUE	DECEMBER , 2005					64083	SPOOL PIN
		SERIAL NO.				76252	ZIPPER FOOT



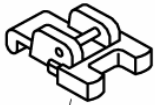
PART NO.	DESCRIPTION
51053	ACCESSORY SET
51064	EXTENSION TABLE W / STYROFOAM+CARTON
64083	SPOOL PIN
76252	ZIPPER FOOT
76255	BLIND STITCH FOOT
76620	BUTTONHOLE FOOT
77040	SPOOL PIN DISC
77066	QUILTING GUIDE
77087	EVEN FEED FOOT
77368	INSTRUCTION BOOK (Eng/Fre/Spa)
79455	LARGE SCREW DRIVER
85015	SATIN FOOT
85128	BOBBIN
85339	POWER CORD (230V)
85365	BUTTONHOLE OPENER / BRUSH
87277	NEEDLE SET
87286	VINYL COVER
87287	SPOOL PIN CAP (MINI)
87289	SPOOL PIN CAP (SMALL)
87290	SPOOL PIN CAP (LARGE)
87532	FOOT CONTROL (PIN-JACK TYPE)
87534	POWER CORD (120V)

BUYER'S MODEL NO.	7436	SECTION	PAGE	REVISION	REMARKS	PART NO.	DESCRIPTION
BUYER'S MODEL NAME	COSMO J-1,CB-3.5					72847	ACCESSORY VINYL BAG
FACTORY MODEL	CA43661					76257	BUTTON SEWING FOOT
ORIGINAL ISSUE	DECEMBER , 2005	SERIAL NO.				76853	1/4-INCH FOOT

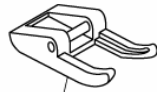
BOUNS PACK



76853



76257



86680



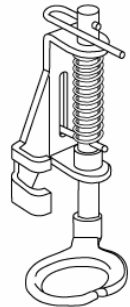
76864



86677



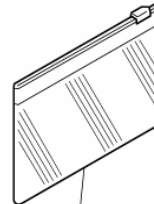
86678



77079



77373



72847

77079 DARNING & EMBROIDERY FOOT
 77373 INSTRUCTION SHEE
 86677 PINTUCK FOOT
 86678 INVISIBLE ZIPPER FOOT
 86680 OPEN TOE FOOT