

SINGER

4622N403/4622AN503/93234

LIST OF PARTS

Sewing Machine Models

4622N403

4622AN503

93234

by **SINGER***



A Publication of Product Support
International Group Engineering

Part No.317161-037A

Printed in Taiwan

® a Registered Trademark of The Singer Company Limited
Copyright 1998, Singer Sewing Machine Company

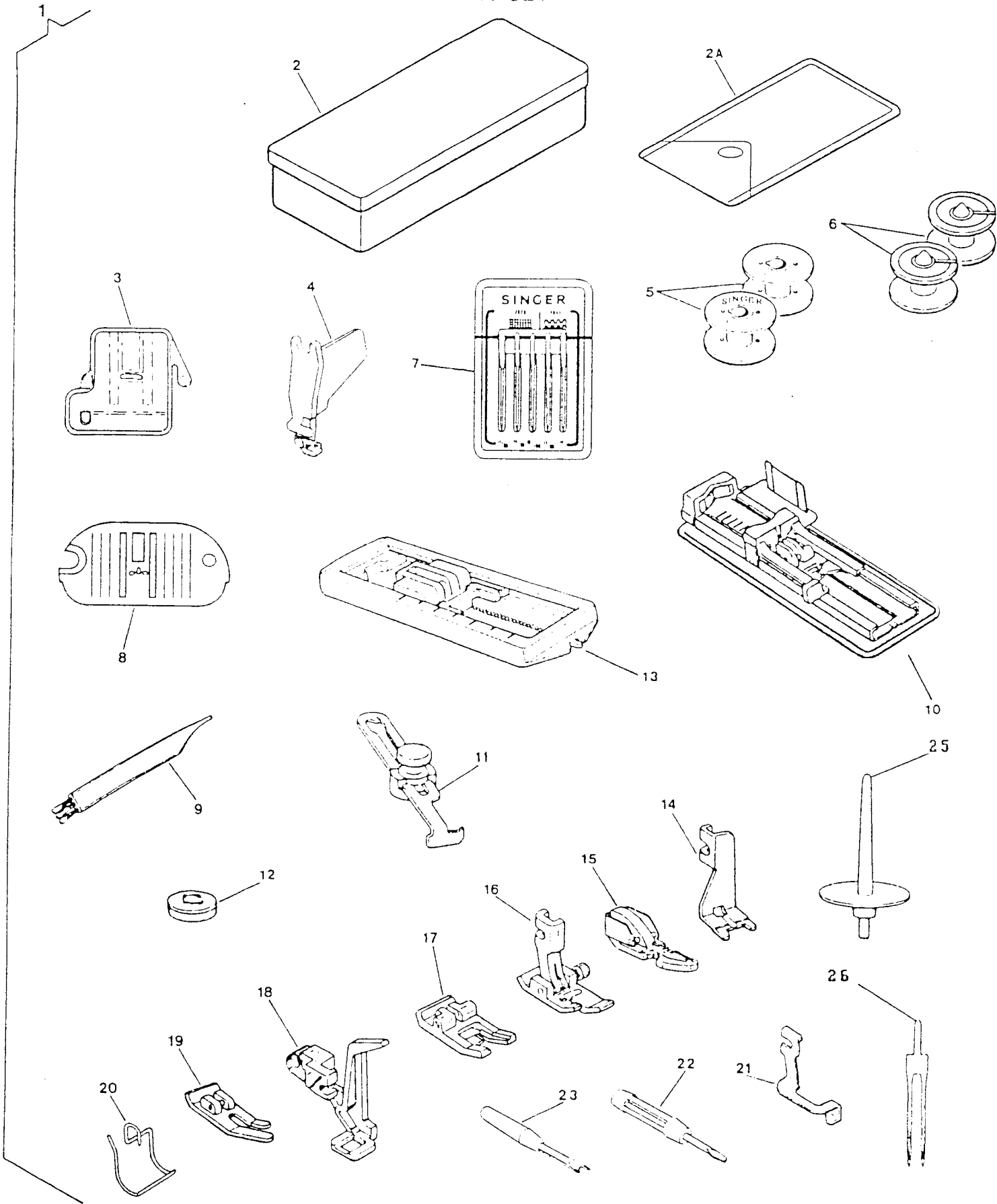
All rights reserved throughout the world

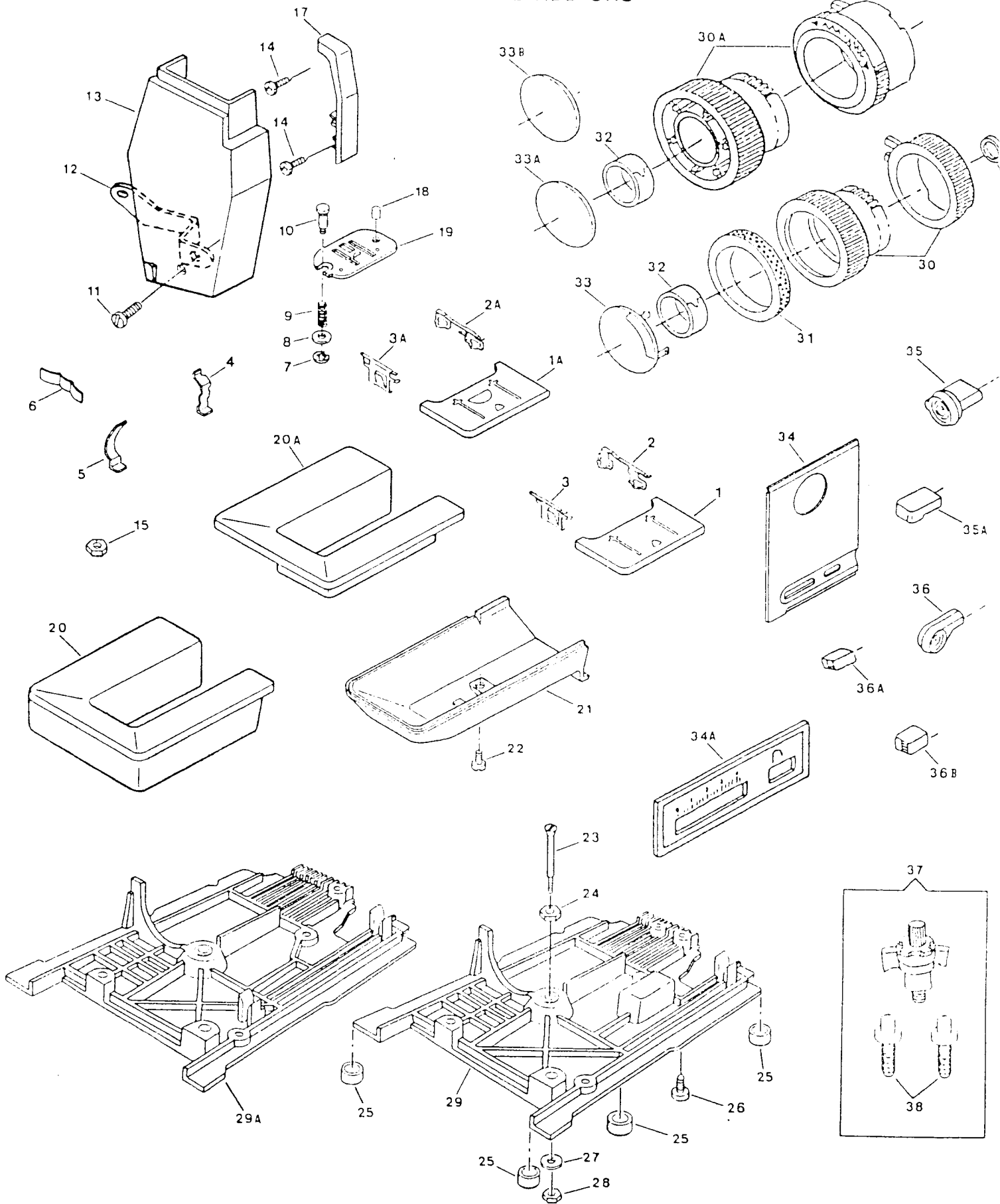
INDEX

PAGE NO.	SUBASSEMBLY
1 , 2	ATTACHMENT SET
3 , 4	COVERS AND ADD ONS
5 , 8	ARM TOP COVER
9 , 10	ARM SHAFT DRIVE SYSTEM
11, 12	HAND WHEEL
13, 14	COAXIAL PRESSER BAR SYSTEM
15, 16	NEEDLE BAR & THREAD TAKE-UP
17, 18	ALPHA FEED
19, 20	HOOK SYSTEM (APOLLO)
21, 22	HOOK AND BOBBIN WINDING SYSTEM (CENTAUR)
23, 28	PATTERN, STITCH LENGTH CONTROL & CAM CONTROLLED FEED
29, 30	DEMAND RESPONSIVE NEEDLE TENSION SYTEM
31, 34	ELECTRICAL EQUIPMENT

ATTACHMENT SET
MODEL: 4622N403, AN503

REF. PART			N	AN
NO.	NO.	DESCRIPTION	4	5
			0	0
			3	3
1	313030-017	ATTACHMENT		X
1	313030-106	ATTACHMENT COMPLETE		X
2A	317396	ACCESSARY BAG	X	X
3	313117	FEED COVER PLATE	X	X
5	172336-001	BOBBIN (APOLLO)	X	X
7	353364	NEEDLE PACK	X	X
9	546358-453	LINT BRUSH	X	X
10	313093-452	BOTTONHOLE PRESSER FOOT (ONE-STEP) COMPLETE		X
13	313992-451	PRESSER FOOT PLATE (4-STEPS) FOR SEWING BUTTONHOLE		X
15	171480	PRESSER FOOT PLATE FOR CORDING AND SLIDE FASTENERS COMPLETE	X	X
17	171463	SPECIAL PURPOSE PRESSER FOOT PLATE	X	X
21	171110	BLINDSTITCH GUIDE	X	X
25	313026-452	TWIN NEEDLE SPOOL PIN		X
26	N2025-014	TWIN NEEDLE (SIZE 14)		X





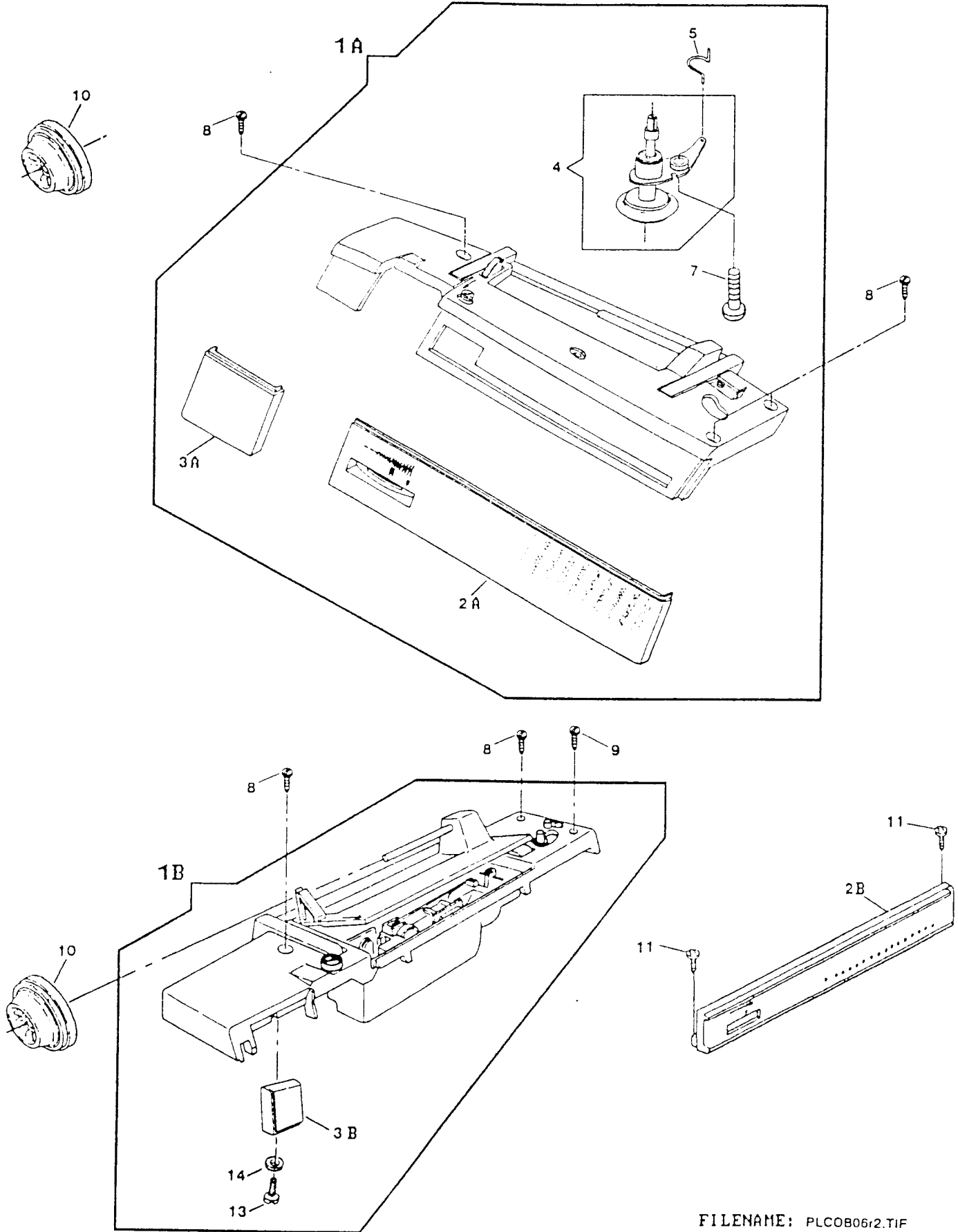
COVERS AND ADD ONS
MODEL: 4622N403, AN503

REF. NO.	PART NO.	DESCRIPTION	N	AN
			4	5
			0	0
			3	3
1	314666	BED SLIDE ASSEMBLY COMPLETE (APOLLO)	X	X
2	314669	BED SLIDE SPRING (RIGHT)	X	X
3	314670	BED SLIDE SPRING (LEFT)	X	X
4	313178	BED SLIDE STOP	X	X
5	313179	BED SLIDE STOP SPRING	X	X
6	313118	CLOTH PLATE SPRING	X	X
7	313098	THROAT PLATE POUNGER RETAINING RING	X	X
8	549426-451	THROAT PLATE PUNGER WASHER	X	X
9	312805	THROAT PLATE PLUNGER SPRING	X	X
10	312804	THROAT PLATE PLUNGER	X	X
11	137250-001	FACE PLATE MOUNTING SCREW	X	X
12	317226	FACE PLATE MOUNTING BRACKET	X	X
13	314259-004	FACE PLATE COMPLETE	X	
13	314259-008	FACE PLATE COMPLETE (#3913)		X
14	113470-003	THREAD TAKE-UP COVER MOUNTING SCREW	X	X
15	313049	BED INSERT NUT	X	X
17	137915-005	THREAD TAKE-UP COVER COMPLETE	X	
17	137915-009	THREAD TAKE-UP COVER COMPLETE (#310K)		X
18	314765	THROAT PLATE LOCATING PIN	X	X
19	312777	THROAT PLATE FOR ZIG-ZAG SEWING	X	X
20A	317379-901	CLOTH PLATE	X	X
21	312773-454	BED COVER (TUBULAR)	X	X
22	354633-452	BED COVER (TUBULAR) SCREW	X	X
23	313052-451	BOTTOM COVER MOUNTING BOLT	X	X
24	313173-451	BOTTOM COVER MOUNTING BOLT RETAINING NUT	X	X
25	313909-451	BED LEG CUSHION	X	X
26	113455-002	BED COVER PLATE (BOTTOM) SCREW	X	X
27	314712-451	BOTTOM COVER MOUNTING BOLT WASHER	X	X
28	313177-452	BOTTOM COVER MOUNTING BOLT MOUNTING NUT	X	X
29	312774-001	BED COVER PLATE (BOTTOM)	X	X
30A	314239-452	PATTERN SELECTOR KNOB AND STITCH BALANCE KNOB ASSEMBLY	X	
30A	314239-457	PATTERN SELECTOR KNOB AND STITCH BALANCE KNOB KIT ASSEMBLY		X
32	313535	PATTERN SELECTOR KNOB COMPRESSION RING	X	X
33A	314744-459	PATTERN SELECTOR KNOB TRIM PLATE		X
33A	314744-475	PATTERN SELECTOR KNOB TRIM PLATE	X	
34A	317009-001	STITCH LENGTH CONTROL PANEL		X
34A	317009-023	STITCH LENGTH CONTROL PANEL WITH GRAPHICS	X	
35A	312657-454	REVERSE FEED CONTROL LEVER KNOB (PLASTIC)	X	
35A	312657-457	REVERSE FEED CONTROL LEVER KNOB (PLASTIC)		X
36A	314676-454	BIGHT AMPLITUDE CONTROL LEVER KNOB (PLASTIC)	X	
36A	314676-457	BIGHT AMPLITUDE CONTROL LEVER KNOB (PLASTIC)		X
36B	312664-454	STITCH LENGTH CONTROL LEVER KNOB (PLASTIC)	X	
36B	312664-457	STITCH LENGTH CONTROL LEVER KNOB AND TENSION REGULATION KNOB		X
37	313180	MACHINE HOLD DOWN MOUNTING KIT	X	X
38	148869	MACHINE LOCATOR PIN	X	X

ARM TOP COVER
MODEL: 4622N403, AN503

REF. PART NO. NO.	DESCRIPTION	N AN
		4 5
		0 0
		3 3
1A 317027-019	ARM TOP COVER COMPLETE WITH HANDLE	X
1A 317027-024	ARM TOP COVER COMPLETE WITH HANDLE	X
2A 317197-906	CONTROL PANEL WITH GRAPHICS	X
2A 317197-907	CONTROL PANEL WITH GRAPHICS	X
3A 314703-904	CONTROL PANEL EXTENSION WITH GRAPHICS	X
3A 314703-974	CONTROL PANEL EXTENSION WITH GRAPHICS	X
4 137887-001	BOBBIN WINDER ASSEMBLY WITH SHOULDER WASHER	X
5 312897-001	BOBBIN WINDER LEVER SPRING	X X
7 354927-004	BOBBIN WINDER LEVER HINGE SCREW	X X
8 354927-001	ARM TOP COVER MOUNTING SCREW	X X
10 179967-456	SPOOL PIN THREAD LEAD-OFF	X
10 179967-461	SPOOL PIN THREAD LEAD-OFF	X

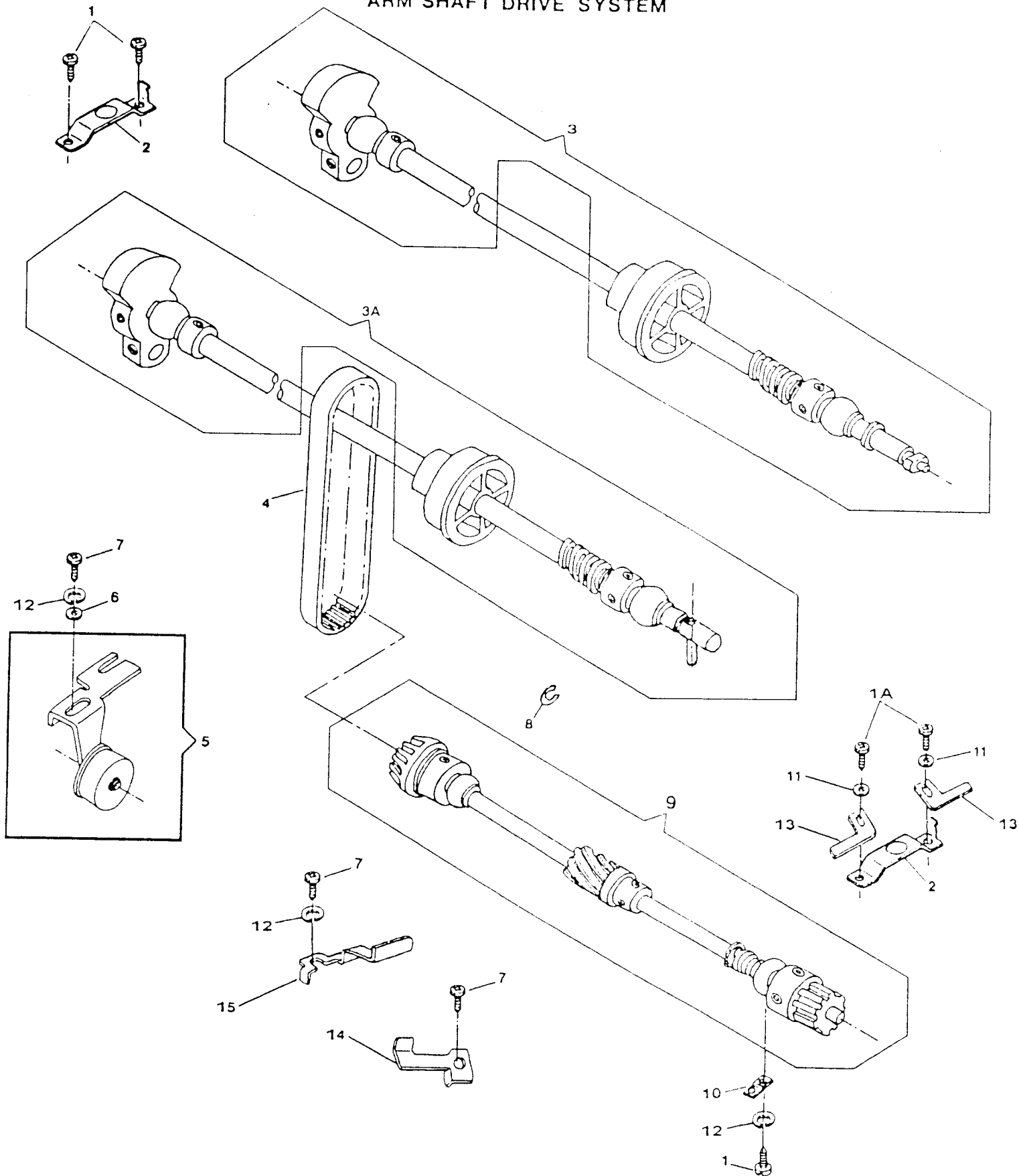
ARM TOP COVER

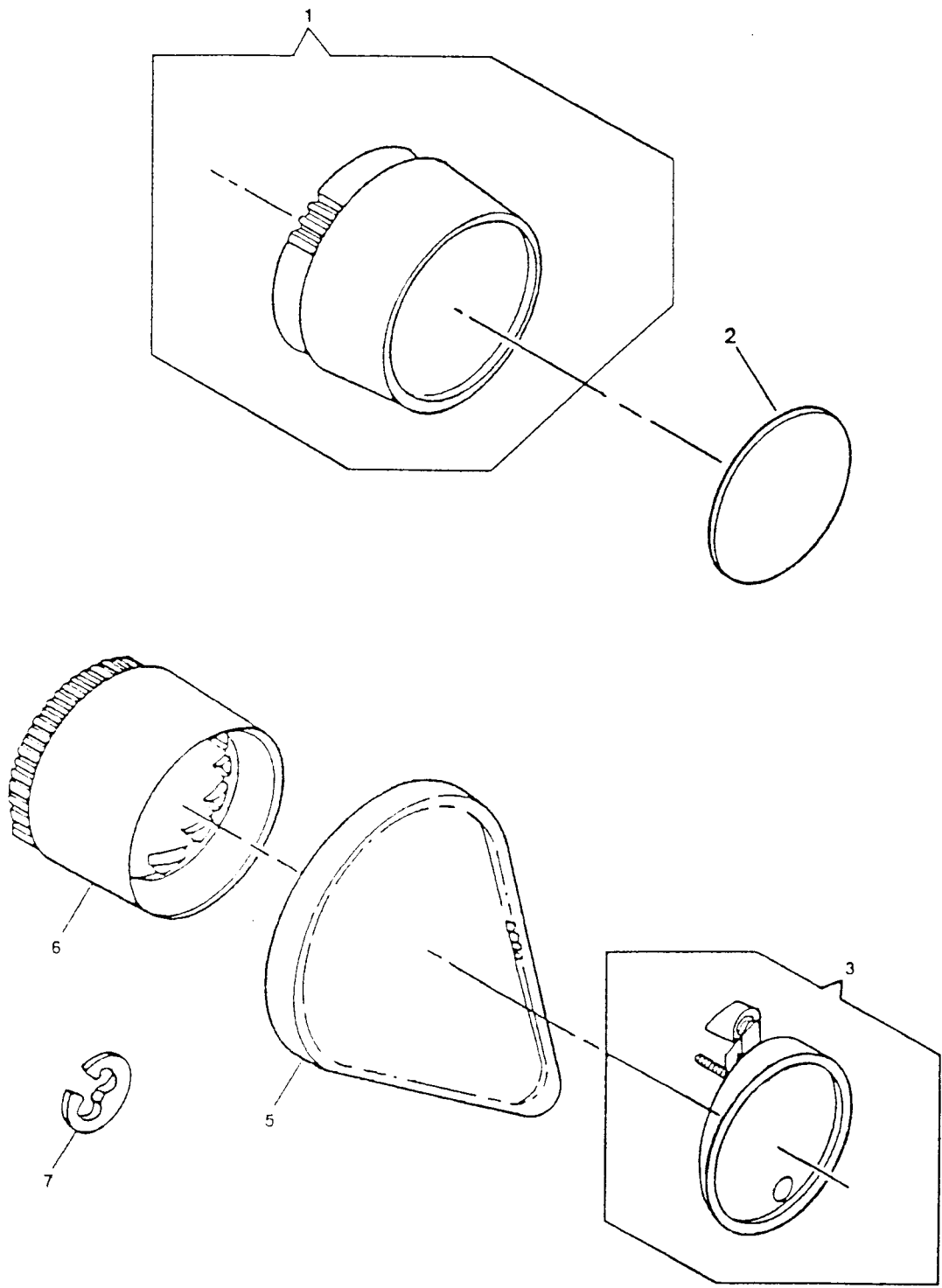


ARM SHAFT DRIVE SYSTEM
 MODEL: 4622N403, AN503

REF. PART NO. NO.	DESCRIPTION	N	AN
		4	5
		0	0
		3	3
1	113455-002 ARM SHAFT (HORIZONTAL) BUSHING (LEFT) CLAMP SCREW	X	X
1A	113455-004 ARM SHAFT (HORIZONTAL) BUSHING (RIGHT) CLAMP SCREW	X	X
2	312796 ARM SHAFT (HORIZONTAL) BUSHING (LEFG & RIGHT) CLAMP	X	X
3	313111-002 ARM SHAFT ASSEMBLY (APOLLO)	X	X
4	603975-011 BELT (ROTATING HOOK DRIVE) ALT: 603975-012	X	X
5	313195-001 IDLER BRACKET ASSEMBLY	X	X
6	314041-451 ROTATING HOOK DRIVING BELT TENSION ADJUSTER SCREW WASHER	X	X
7	113455-002 ROTATING HOOK DRIVING BELT TENSION ADJUSTER SCREW	X	X
8	313153 HAND WHEEL RETAINING RING	X	X
9	370560 ROTATING HOOK DRIVE SHAFT SUB-ASSEMBLY	X	X
10	313816 ROTATING HOOK DRIVE SHAFT BUSHING (SELF-ALIGNING) CLAMP	X	X
11	316164 WASHER, ROTATING HOOK DRIVE SHAFT BUSHING (SELF-ALIGNING) CLAMP SCREW	X	X
12	314013-451 LOCK WASHER, ROTATING HOOK DRIVING BELT TENSION ADJUSTER SCREW	X	X
13	137873 MOTOR BELT STOP PLATE	X	X
14	137916 ROTATING HOOK BELT SLIP PREVENTION GUARD (LOWER)	X	X
15	137286 ROTATING HOOK BELT SLIP PREVENTION GUARD	X	X

ARM SHAFT DRIVE SYSTEM



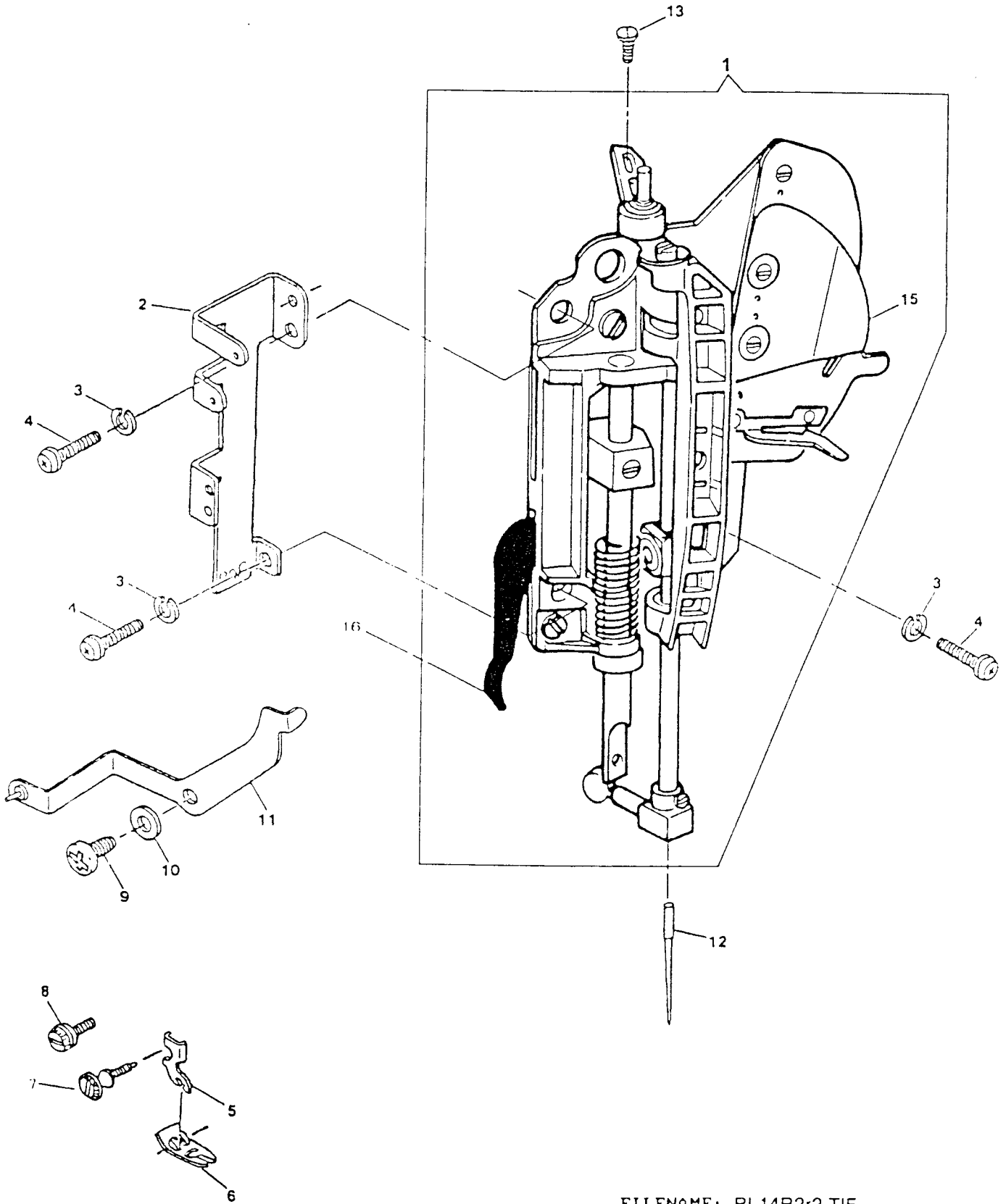


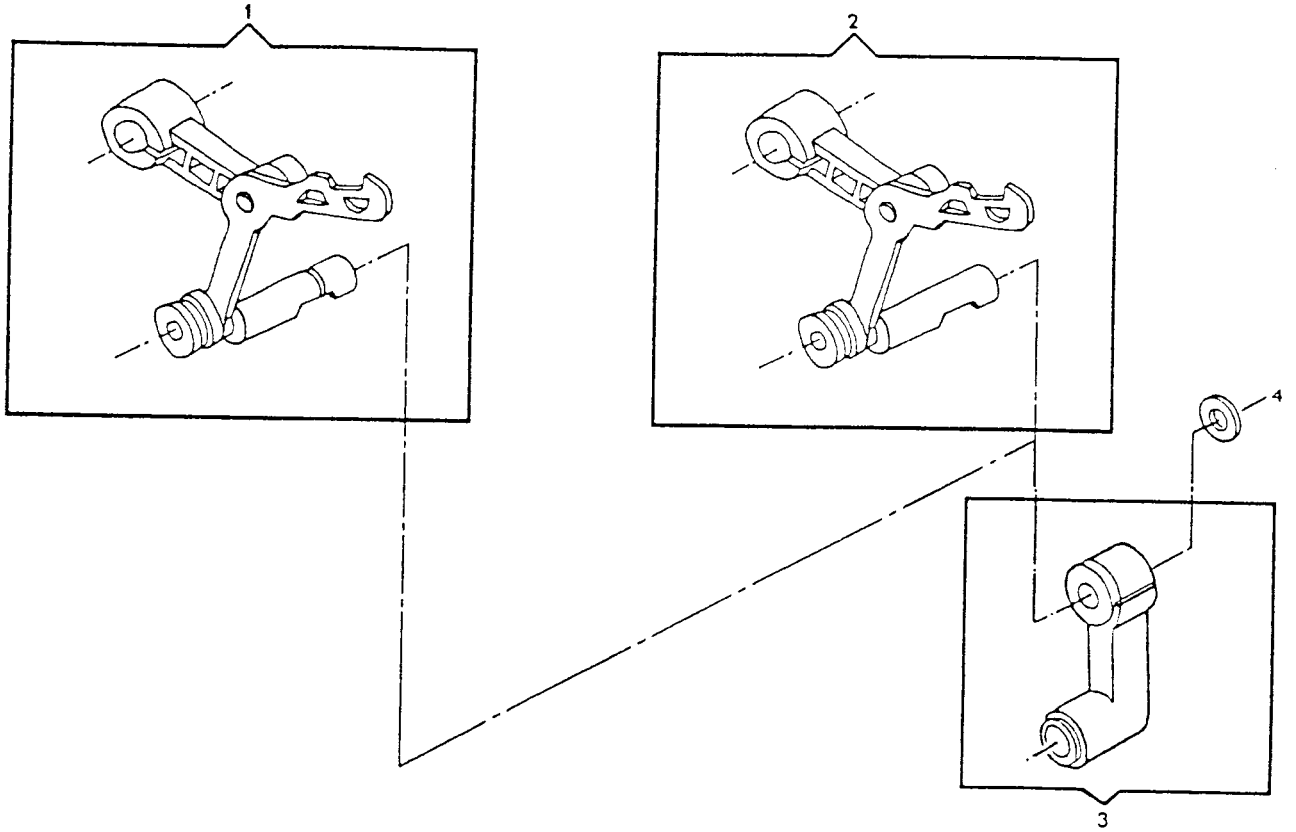
HAND WHEEL
MODEL: 4622N403, AN503

REF. PART			N	AN
NO.	NO.	DESCRIPTION	4	5
			0	0
			3	3
3	316070-001	HAND WHEEL CLUTCH PLATE ASSEMBLY	X	X
4	314733-950	HAND WHEEL ACESS PLATE	X	
5	312628-001	BELT (MOTOR DRIVE) ALT: 979285-001	X	X
6	137892-451	HAND WHEEL	X	X
7	313153	HAND WHEEL RETAINING RING	X	X

COAXIAL PRESSER BAR SYSTEM
MODEL: 4622N403, AN503

REF. PART NO. NO.	DESCRIPTION	N	AN
		4	5
		0	0
		3	3
1	314695-002 HEAD END MODULE (APOLLO)	X	X
2	314591 FACE PLATE MOUNTING BRACKET	X	X
3	313955-451 HEAD END MOUNTING PLATE LOCK WASHER	X	X
4	113455-012 HEAD END MOUNTING PLATE SCREW	X	X
5	163706-451 PRESSER FOOT SHANK (SNAP-ON)	X	X
6	313150 PRESSER FOOT PLATE (SNAP-ON) FOR ZIG-ZAG SEWING	X	X
7	113531-451 PRESSER FOOT THUMB SCREW	X	X
9	113455-001 NEEDLE THREAD TENSION RELEASE LEVER HINGE SCREW	X	X
10	314041-451 NEEDLE THREAD TENSION RELEASE LEVER RETAINING WASHER	X	X
11	314589 NEEDLE THREAD TENSION RELEASE LEVER ASSEMBLY	X	X
12	N2020-014 NEEDLE (SIZE NO.14)		X
12	N2045-014 NEEDLE (SIZE NO. 14) (FOR 9143N254)		X
13	137813-002 NEEDLE BAR DRIVING ARM BALL JOINT SCREW	X	X
15	314690 THREAD PINCH PLATE	X	X
16	314582 PRESSER BAR LIFTER	X	X



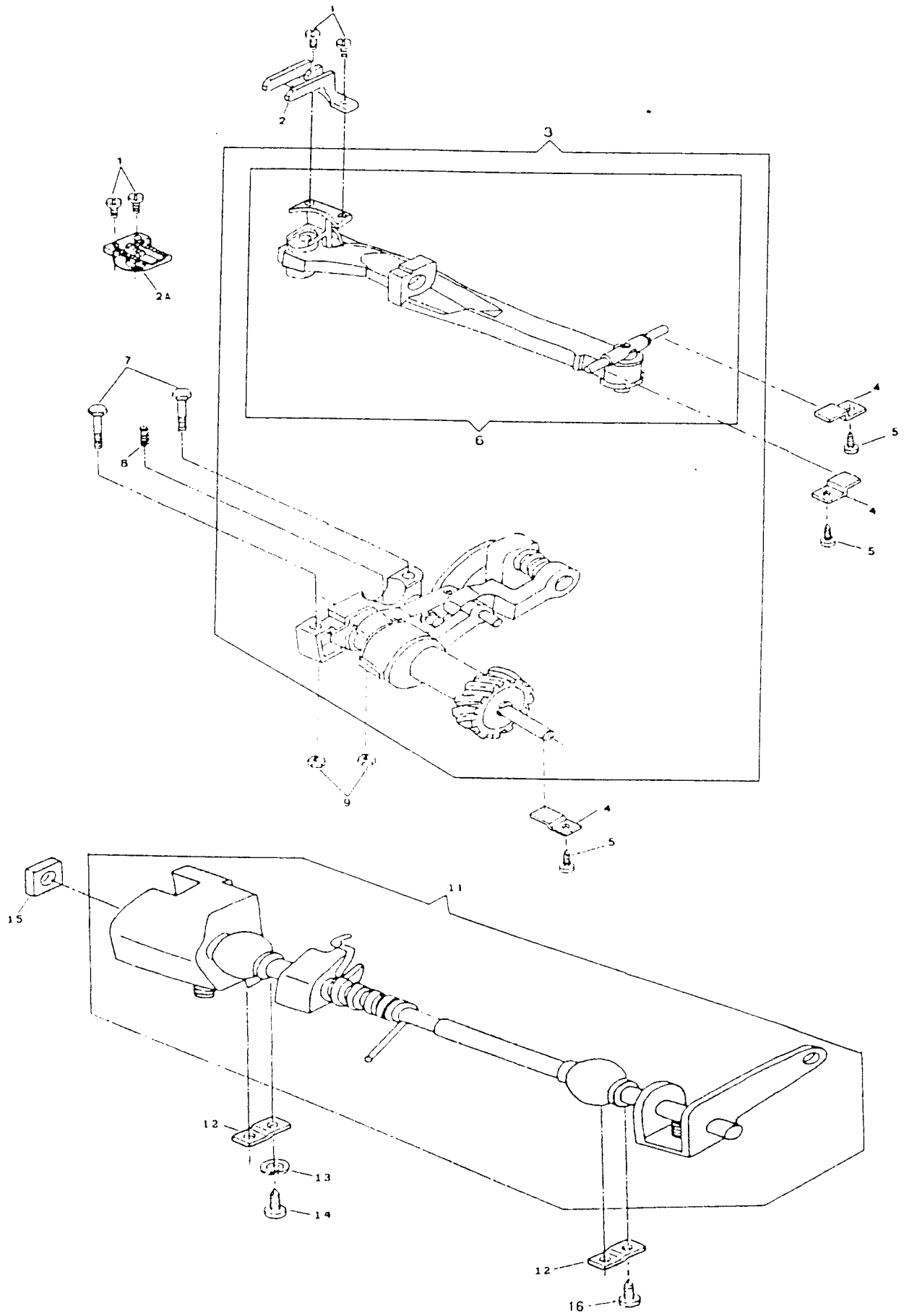


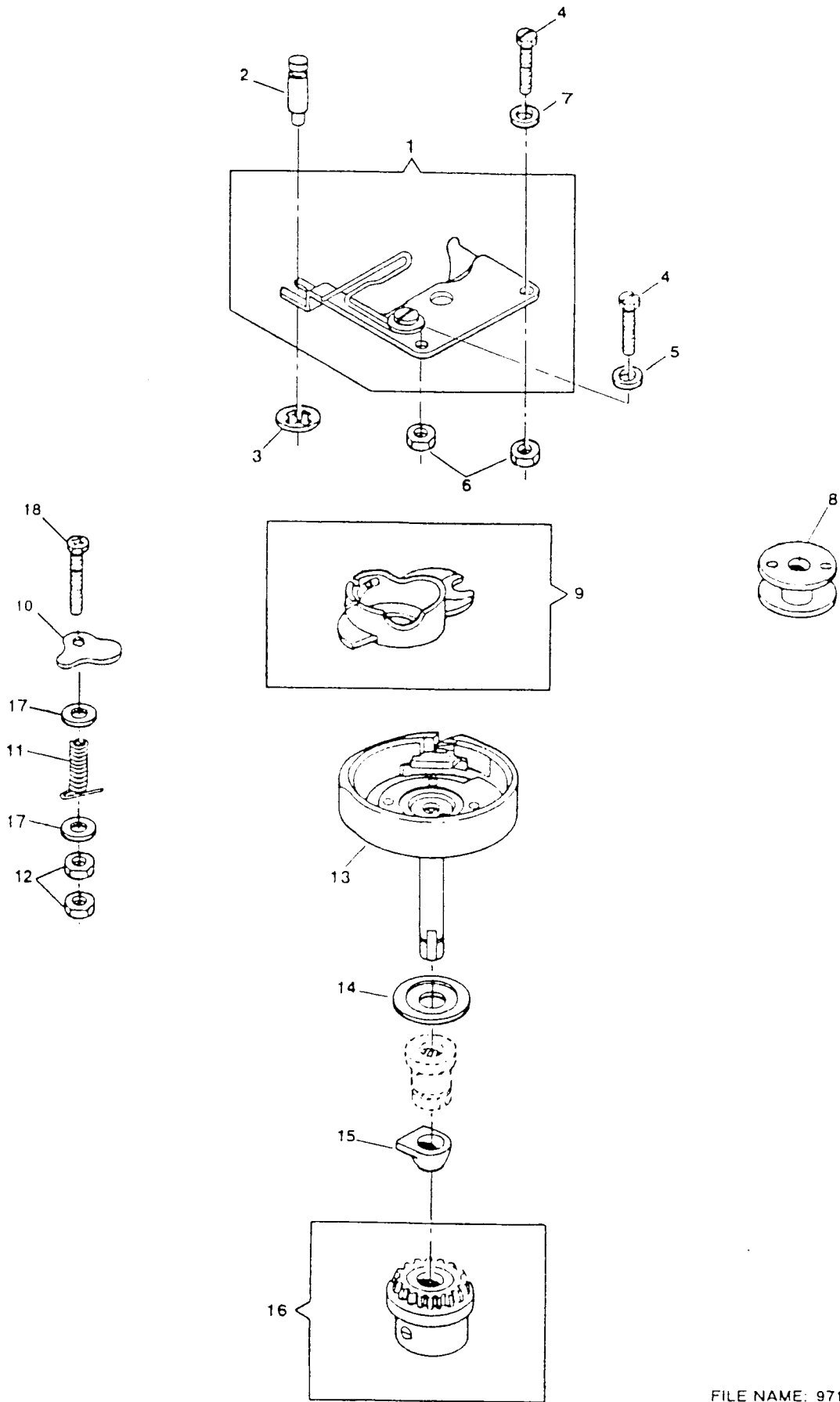
NEEDLE BAR & THREAD TAKE-UP
 MODEL: 4622N403, AN503

REF. NO.	PART NO.	DESCRIPTION	N	AN
			4	5
			0	0
			3	3
1	314694	THREAD TAKE-UP COMPLETE (APOLLO)	X	X
3	137528-901	NEEDLE BAR CONNECTING LINK	X	X
4	314071	WASHER, THREAD TAKE-UP LEVER	X	X

ALPHA FEED
MODEL: 4622N403, AN503

REF. PART NO. NO.	DESCRIPTION	N	AN
		4	5
		0	0
		3	3
1	141920-452 FEED DOG SCREW	X	X
2A	312679 FEED DOG (APOLLO)	X	X
3	313011 ALPHA FEED MODULE	X	X
4	312851 FEED BAR PIVOT HING STUD CLAMP	X	X
5	113455-003 CLAMP SCREW	X	X
6	314141 FEED BAR ASSEMBLY	X	X
7	354921-451 FEED & ROTATING HOOK DRIVE SHAFT BEARING BLOCK SCREW	X	X
8	314070 ROTATING HOOK DRIVE SHAFT BUSHING SPRING	X	X
9	514674-451 FEED & ROTATING HOOK DRIVE SHAFT BEARING BLOCK MOUNTING SCREW NUT	X	X
11	313133 FEED REGULATOR SHAFT ASSEMBLY	X	X
12	313816 FEED REGULATOR SHAFT BUSHING (SELF-ALIGNING) CLAMP	X	X
13	314013-451 FEED REGULATOR SHAFT BUSHING (SELF-ALIGNING) CLAMP SCREW LOCK WASHER	X	X
14	113455-001 FEED REGULATOR SHAFT BUSHING (SELF-ALIGNING) CLAMP SCREW	X	X
15	511030 FEED REGULATOR SLIDE BLOCK	X	X
16	113455-002 FEED REGULATOR BUSHING (SELF-ALIGNING) CLAMP SCREW (RIGHT)	X	X

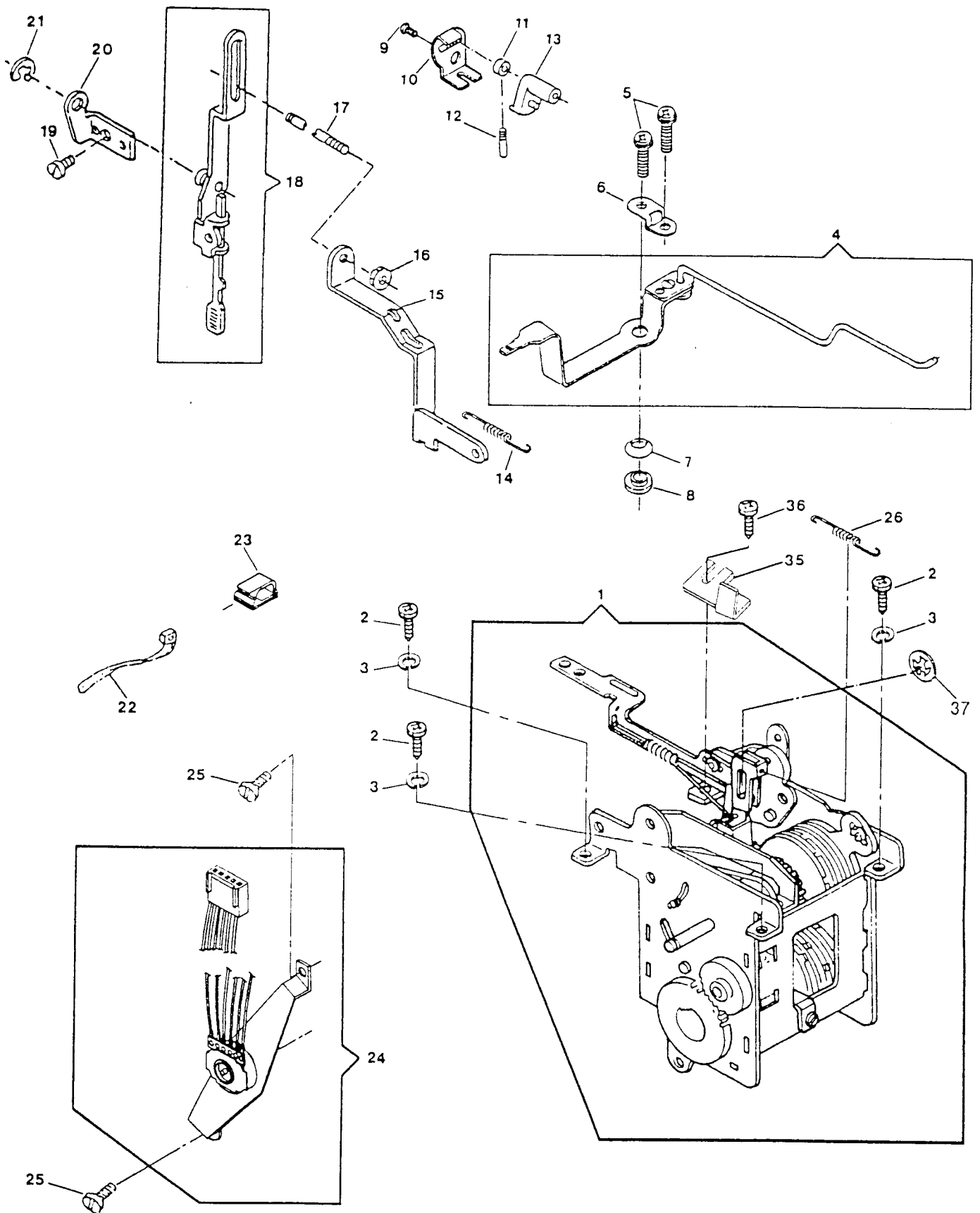




HOOK SYSTEM (APOLLO)
 MODEL: 4622N403, AN503

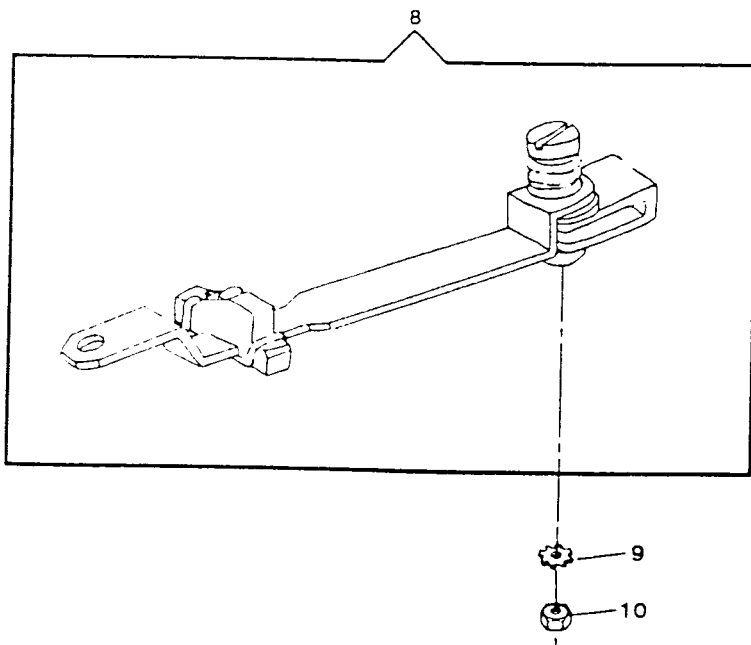
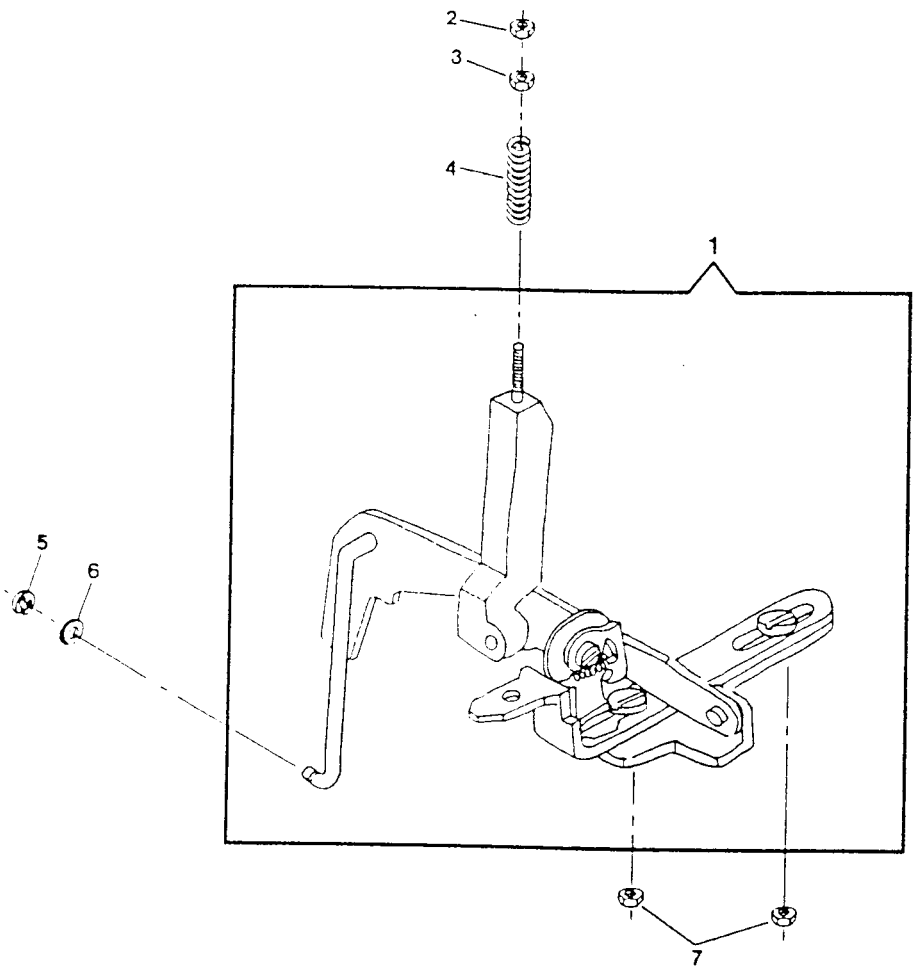
REF. NO.	PART NO.	DESCRIPTION	N	AN
			4	5
			0	0
			3	3
1	313089	ROTATING HOOK BOBBIN CASE POSITION PLATE ASSEMBLY	X	X
2	312603	ROTATING HOOK BOBBIN CASE POSITION PLATE HOLD DOWN STUD	X	X
3	313161	ROTATING HOOK BOBBIN CASE POSITION PLATE HOLD DOWN STUD RETAINER	X	X
4	113439-451	ROTATING HOOK BOBBIN CASE POSITION PLATE SCREW	X	X
5	313190-451	ROTATING HOOK BOBBIN CASE POSITION PLATE SCREW WASHER	X	X
6	313945-451	ROTATING HOOK BOBBIN CASE POSITION PLATE SCREW NUT	X	X
7	446138	ROTATING HOOK BOBBIN CASE POSITION PLATE SCREW WASHER (RIGHT)	X	X
8	172336-001	ROTATING HOOK BOBBIN (PLASTIC)	X	X
9	421325	ROTATING HOOK BOBBIN CASE COMPLETE	X	X
10	313395-900	ROTATING HOOK BOBBIN CASE RETAINING PLATE SUB-ASSEMBLY	X	X
11	44892	ROTATING HOOK BOBBIN CASE RETAINING PLATE STUD SPRING	X	X
12	514674-451	ROTATING HOOK BOBBIN CASE RETAINING PLATE STUD RETAINING RING	X	X
13	447926-932	ROTATING HOOK COMPLETE	X	X
14	314049-001	ROTATING HOOK FLANGED BUSHING THRUST WASHER	X	X
15	312847	ROTATING HOOK FLANGED BUSHING WASHER	X	X
16	314012	ROTATING HOOK BEVEL GEAR COMPLETE	X	X
17	931929-004	WASHER, BOBBIN CASE RETAINING	X	X
18	137315-453	ROTATING HOOK BOBBIN CASE RETAINING PLATE SCREW	X	X

PATTERN STITCH LENGTH CONTROL AND CAM CONTROLLED FEED



PATTERN, STITCH LENGTH CONTROL & CAM CONTROLLED FEED
 MODEL: 4622N403, 4622AN503

REF. PART NO. NO.	DESCRIPTION	N AN 4 5 0 0 3 3
1 314732-003	PATTERN SELECTOR MODULE	X
1 317407-001	PATTERN SELECTOR MODULE	X
2 113455-001	DISCSELECTOR MECHANISM MOUNTING PLATE SCREW (LEFT AND RIGHT)	X X
3 314013-451	DISC SELECTOR MECHANISM MOUNTING PLATE SCREW (LEFT AND RIGHT)	X X
4 314607-003	BIGHT AMPLITUDE CONTROL LEVER ASSEMBLY	X X
5 113455-001	BIGHT AMPLITUDE CONTROL LEVER STOP ADJUSTMENT SCREW	X X
6 314683	BIGHT AMPLITUDE CONTROL LEVER RETAINER	X X
7 353457	BIGHT AMPLITUDE CONTROL LEVER FRICTION WASHER	X X
8 314611	BIGHT AMPLITUDE CONTROL LEVER SHOULDER WASHER	X X
9 137813-002	BUTTONHOLE ACTUATOR CAM ADJUSTING BRACKET SCREW	X
10 137450	BUTTONHOLE ACTUATOR CAM ADJUSTING BRACKET	X
11 313022	BUTTONHOLE FOLLOWER HUB RELEASE	X
12 313023	BUTTONHOLE FOLLOWER HUB RELEASE PIN	X
13 313025	BUTTONHOLE ACTUATOR CAM	X
14 313799-001	BUTTONHOLE ACTUATOR ADJUSTING ROD SPRING	X
15 313005	BUTTONHOLE DISC CONTROL CATCH RELEASE LINK	X
16 314763-451	BUTTONHOLE TRIPPING ROD ADJUSTING & LOCKING NUT	X
17 312982	BUTTONHOLE TRIPPING LEVER ROD	X
18 312994-002	BUTTONHOLE KICK-OUT TRIPPING ROD LEVER ASSEMBLY	X
19 354877-451	BUTTONHOLE PIVOT LEVER SCREW	X
20 313392	BUTTONHOLE LEVER PIVOT	X
21 312685	BUTTONHOLE KICK-OUT SHAFT TRIPPING LEVER RETAINING RING	X
22 314497	NEEDLE BAR DRIVING ARM SLIDE POSITIONING SPRING	X
26 314497	NEEDLE BAR DRIVING ARM SLIDE POSITIONING SPRING	X
35 137407	ARM SHAFT BELT SLIP PREVENTION GUARD	X X
36 113455-002	SCREW, ARM SHAFT BELT SLIP PREVENTION GUARD	X X
37 314606	BIGHT AMPLITUDE CONTROL ROD RETAINING RING	X X

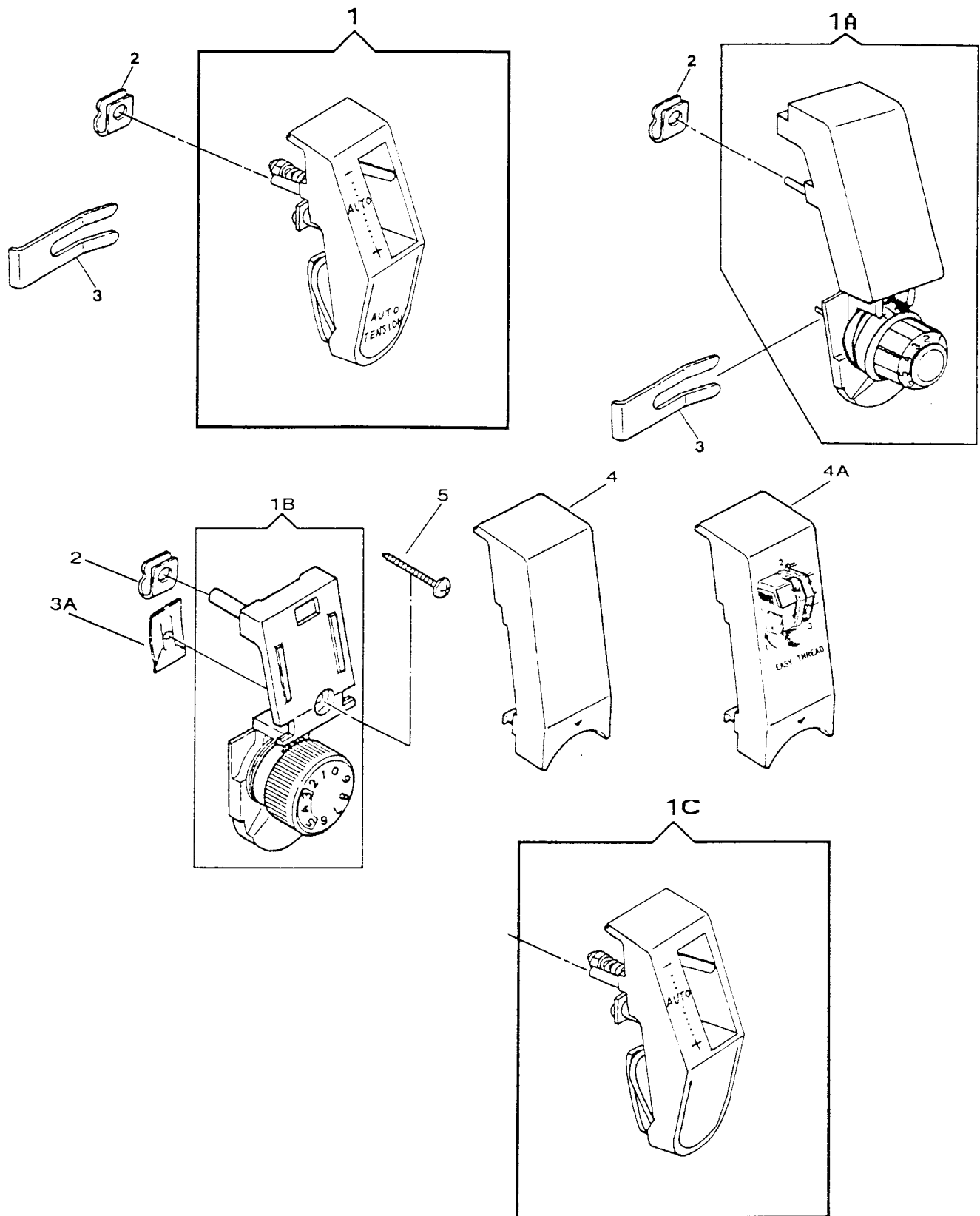


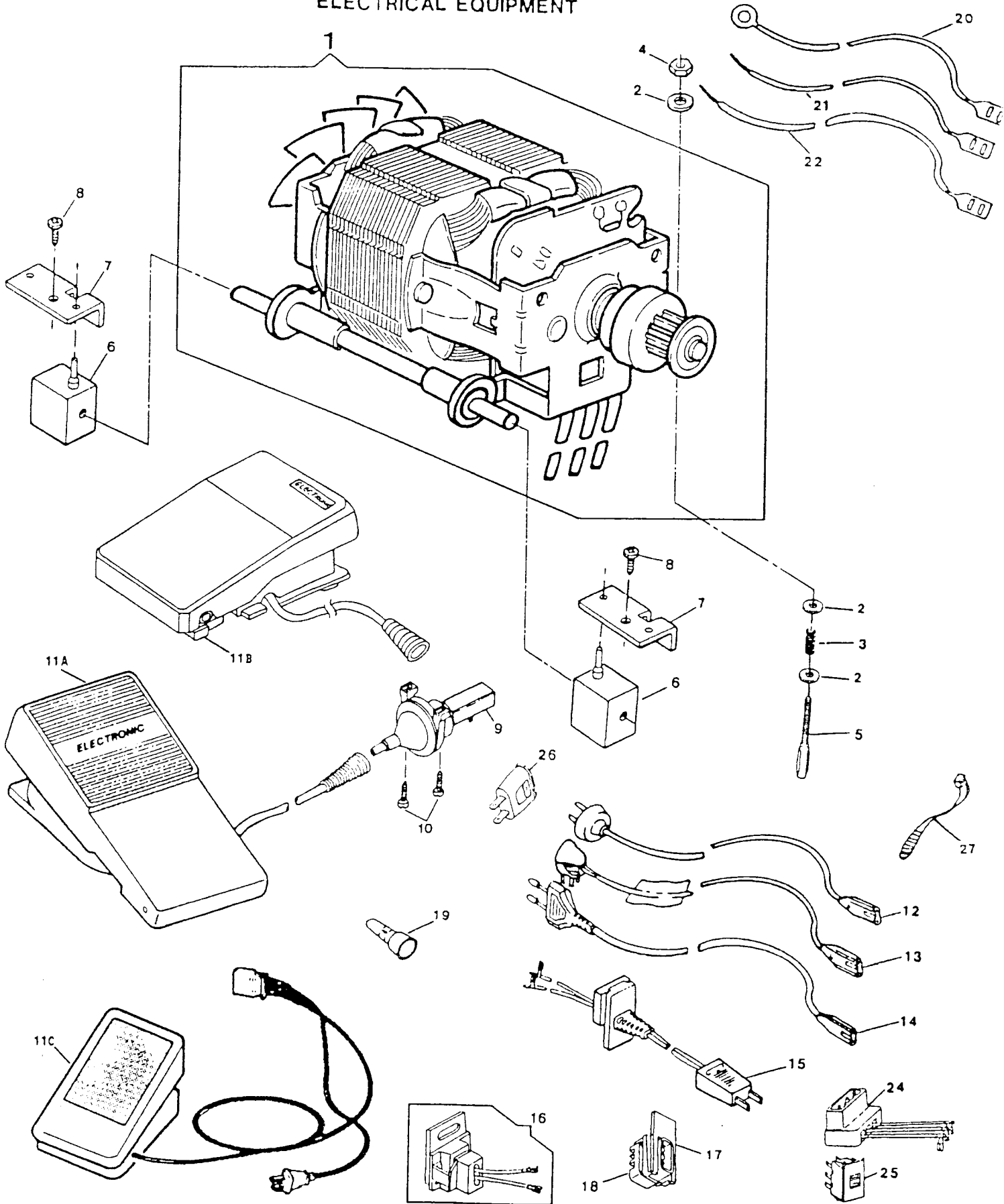
PATTERN, STITCH LENGTH CONTROL & CAM CONTROLLED FEED (COIN.)
 MODEL: 4622N403, AN503

REF. NO.	PART NO.	DESCRIPTION	N	AN
			4	5
			0	0
			3	3
1	314300-001	FEED REVERSE MECHANISM	X	X
2	514674-451	CAM CONTROLLED FEED CONNECTING ROD LOCKING NUT	X	X
3	312645-451	CAM CONTROLLED FEED DISC FOLLOWER ACTUATOR CONNECTING ROD ADJUSTING	X	X
4	313143	CAM CONTROLLED FEED DISC FOLLOWER ACTUATOR CONNECTING ROD SPRING	X	X
5	312702	FEED LEVER CONNECTING LINK RETAINING RING	X	X
6	313891	CAM CONTROLLED FEED CONNECTING ROD STABILIZING WASHER	X	X
7	514674-451	REVERSE FEED CONTROL LEVER GUIDE SCREW NUT	X	X
8	313569-001	STITCH LENGTH CONTROL LEVER ASSEMBLY	X	X
9	314712-451	STITCH LENGTH CONTROL LEVER PIVOT LOCK WASHER	X	X
10	313177-451	STITCH LENGTH CONTROL LEVER NUT	X	X

DEMAND RESPONSIVE NEEDLE TENSION SYSTEM
 MODEL: 4622N403, AN503

REF. PART			N	AN
NO.	NO.	DESCRIPTION		
			4	5
			0	0
			3	3
1A	317383-900	THREAD TENSION MODULE	X	
1C	137884-030	THREAD TENSION MODUEL (AUTO)		X
2	313199	TENSION COVER MOUNTING RETAINER	X	X
3	313047-451	TENSION COVER RETAINING CLIP	X	X





ELECTRICAL EQUIPMENT
MODEL: 4622N403, AN503

REF. NO.	PART NO.	DESCRIPTION	N	AN
			4	5
			0	0
			3	3
1	317352-002	MOTOR COMPLETE (120V CARBON PILE)	X	X
2	37969	MOTOR ADJUSTING STUD NUT WASHER	X	X
3	314058-001	MOTOR BELT TENSION SPRING	X	X
4	53646	MOTOR ADJUSTING STUD NUT	X	X
5	988653-003	MOTOR ADJUSTING STUD	X	X
6	979329-001	RESILIENT MOUNT	X	X
7	988651-001	CLIP	X	X
8	113470-004	MOTOR MOUNTING SCREW	X	
11C	319003-001	TRIAC CONTROLLER (120V, SPT-2)		X
11C	319003-003	TRIAC FOOT CONTROLLER ASSEMBLY (UL)		X
11C	319003-006	TRIAC FOOT CONTROLLER COMPLETE (CSA, FOR CANADA ONLY)	X	X
17	317374-901	HOLDER (120V)	X	X
18	317421-001	RECEPTACLE (120V)	X	X
19	317355	WIRE CONNECTOR	X	X
20	317356-004	LEAD (A) W/TERMINAL ASSEMBLY (220-240V)	X	X
21	317356-009	LEAD (B) W/TERMINAL ASSEMBLY	X	X

ELECTRICAL EQUIPMENT (CONT.)
 MODEL: 4622N403, AN503

REF. PART NO.	PART NO.	DESCRIPTION	N	AN
			4	5
			0	0
			3	3
1B	314823-003	LINT AND HEAD SHIELD ASSEMBLY (120V)	X	X
4A	317397-902	LAMP SOCKET ASSEMBLY (120V, DOUBLE INSULATION)	X	X
5	113470-003	THREAD TAKE-UP COVER AND LINT/HEAT SHIELD SCREW	X	X
7	137813-002	SCREW, LINT AND HEAT SHIELD MOUNTING	X	X
8	194120-019	LIGHT BULB (120V)	X	X
10	979585-911	ROCKER SWITCH	X	
10	979585-207	ROCKER SWITCH (#3913)		X

