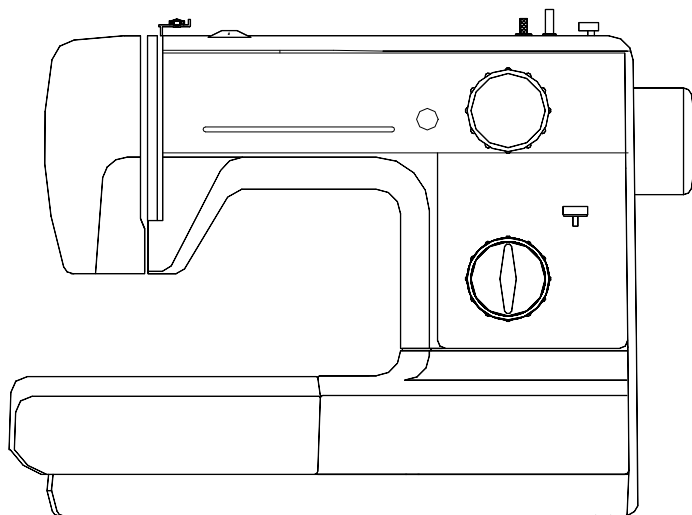


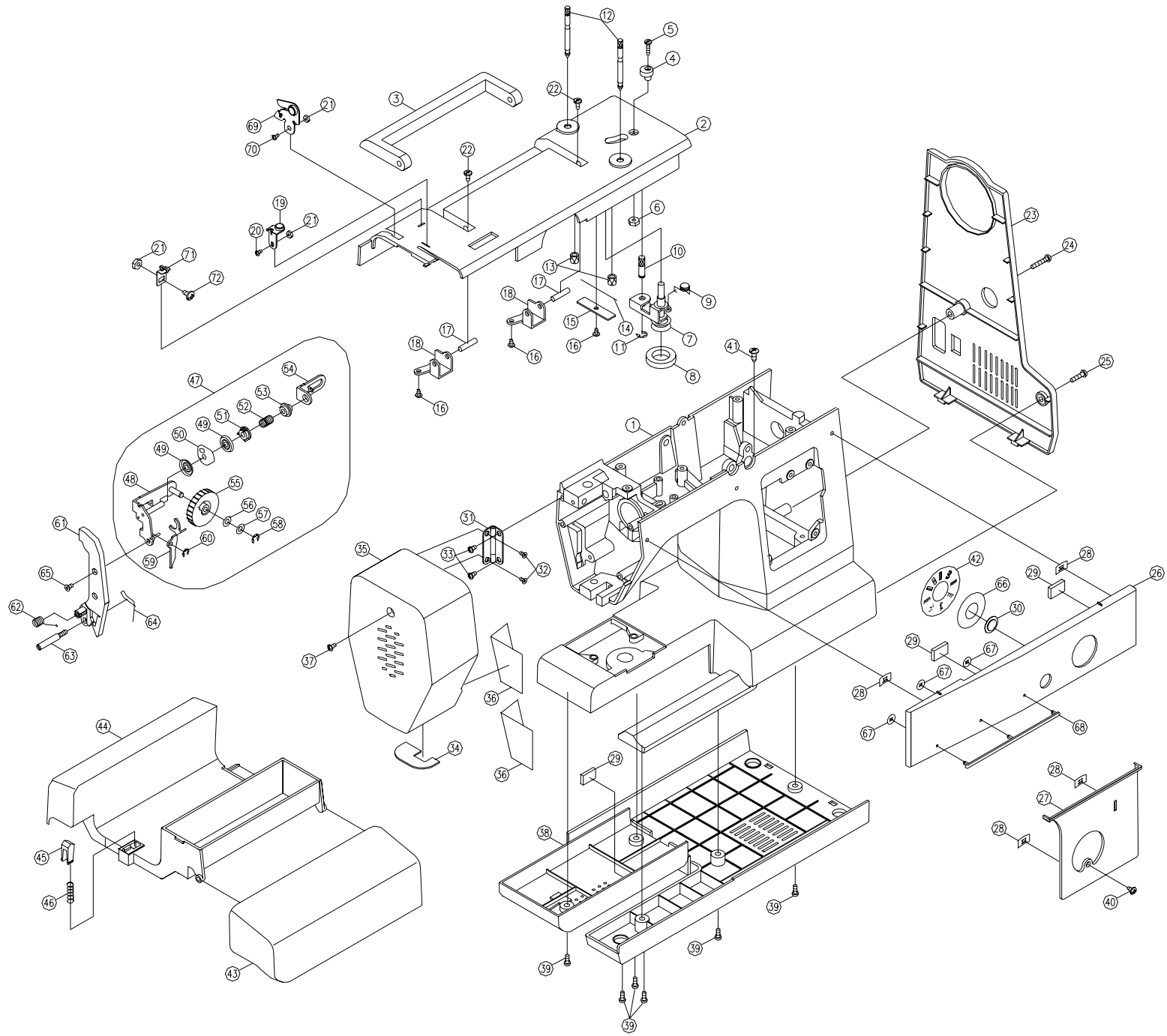
Parts List



SINGER[®]
Model 3514/3515/3508
3507/3503

0291600H3 (1版)

A

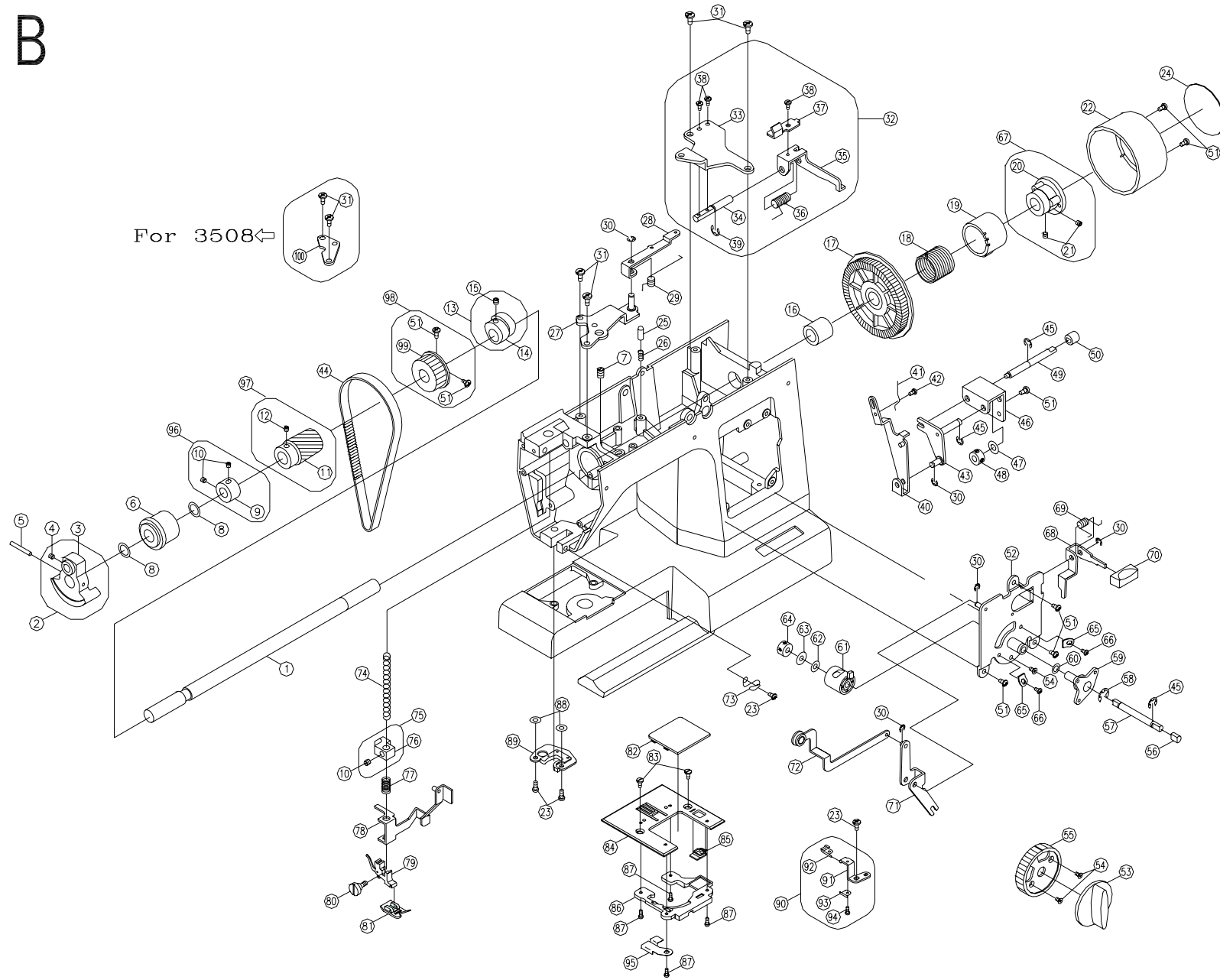


No.	Part No.	Description
1	NB0015210	Arm base complete
2	ND26003210	Arm top cover
3	NB0943210	Handle
4	E1A2393000	Bobbin winder stopper
5	004106162	Set screw (9/64×40×16)
6	004706013	Nut (9/64×40 t=3)
7	SA0065000	Bobbin winder crank complete
8	K81673000	Bobbin winder rubber ring
9	K81643003	Bobbin winder crank spring
10	K81493002*	Bobbin winder stopper shaft
11	003010053	E-Ring (ETW-5)
12	K81563001	Spool pin
13	K81483002*	Spool pin bushing
14	S10333000	Spool pin spring
15	S10353006	Spool pin spring holder plate
16	004240166	Set screw (M4×8)
17	H13083003	Handle pin
18	K81663002	Handle stopper plate
19	S10325000	Bobbin winder thread guide complete
20	004230076	Set screw (M3×5)
21	004830015	Nut (M3 t=2.3)
22	004250151	Set screw (M5×10 B)
23	NB0763210	Motor drive belt cover
24	004240086	Motor drive belt cover set screw
25	004240136	Motor drive belt cover set screw
26	NE29953210	Front panel (3508)
26	NE29943210	Front panel (3508)
26	NF29983210	Front panel (3507)
26	NC29983210	Front panel (3515)
26	ND29983210	Front panel (3503)
27	NE29933210	Front panel (3508)
27	ND29983210	Front panel (3507)
27	NB29983820	Front panel (3503.3515.3508)
28	003070043	P-Type Push-on Nut (PSN-4)
29	S10313000	Front panel (1) tape
30	F30103000	Pattern display window

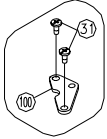
No.	Part No.	Description
31	K81425000	Face plate hinge complete
32	004230195	Set screw (M3×10 D)
33	004106202	Set screw (9/64×40×7)
34	S10293000	Face plate shielding plate
35	ND27193210	Face plate
36	K81753000	Heat resistant plate
37	004240046	Set screw (M4×10 B)
38	NB0713210	Free arm base
39	004240106	Set screw (M4×8 A)
40	004240171	Set screw (M4×6 D)
41	004240046	Set screw (M4×10 B)
42	NF25983210	Pattern display plate (3507)
42	NE25973210	Pattern display plate (3508)
42	ND25983210	Pattern display plate (3503)
42	NC25983210	Pattern display plate (3515)
42	NE25983210	Pattern display plate (3508)
43	NB0733210	Sewing table body cover
44	NB0723210*	Sewing table body
45	H10133211*	Sewing table body guide
46	H10143005	Sewing table body guide spring
47	ND27794210	Dial tension complete
48	S10036002*	Dial tension supporter plate complete
49	K80333001*	Dial tension disc
50	K80343001*	Dial tension disc washer
51	J30503000*	Dial tension spring nut
52	NB1083000*	Dial tension spring
53	K50193000*	Dial tension spring regulator nut
54	S10073003*	Dial tension plate
55	ND27793210	Dial tension knob
56	004500360	Wave washer (WW-5)
57	004300376	Washer (5.5×11×0.5)
58	003010043	E-Ring (ETW-4)
59	K80353002*	Dial tension waft plate
60	003010036	E-Ring (ETW-3)
61	NB0953210	Dial tension supporter plate cover
62	K80383002	Thread guide spring

No.	Part No.	Description
63	004240442	Thread guide (1) set screw
64	K80393000	Thread guide (1)
65	004230136	Set screw (M3×8 D)
66	008465000	Sticker
67	003020023	Washer (CS-2)
68	NB20113000	Front panel decoration bar
69	NB1343001	Thread guide complete
70	004230016	Set screw (M3×6 A)

B



For 3508 ←

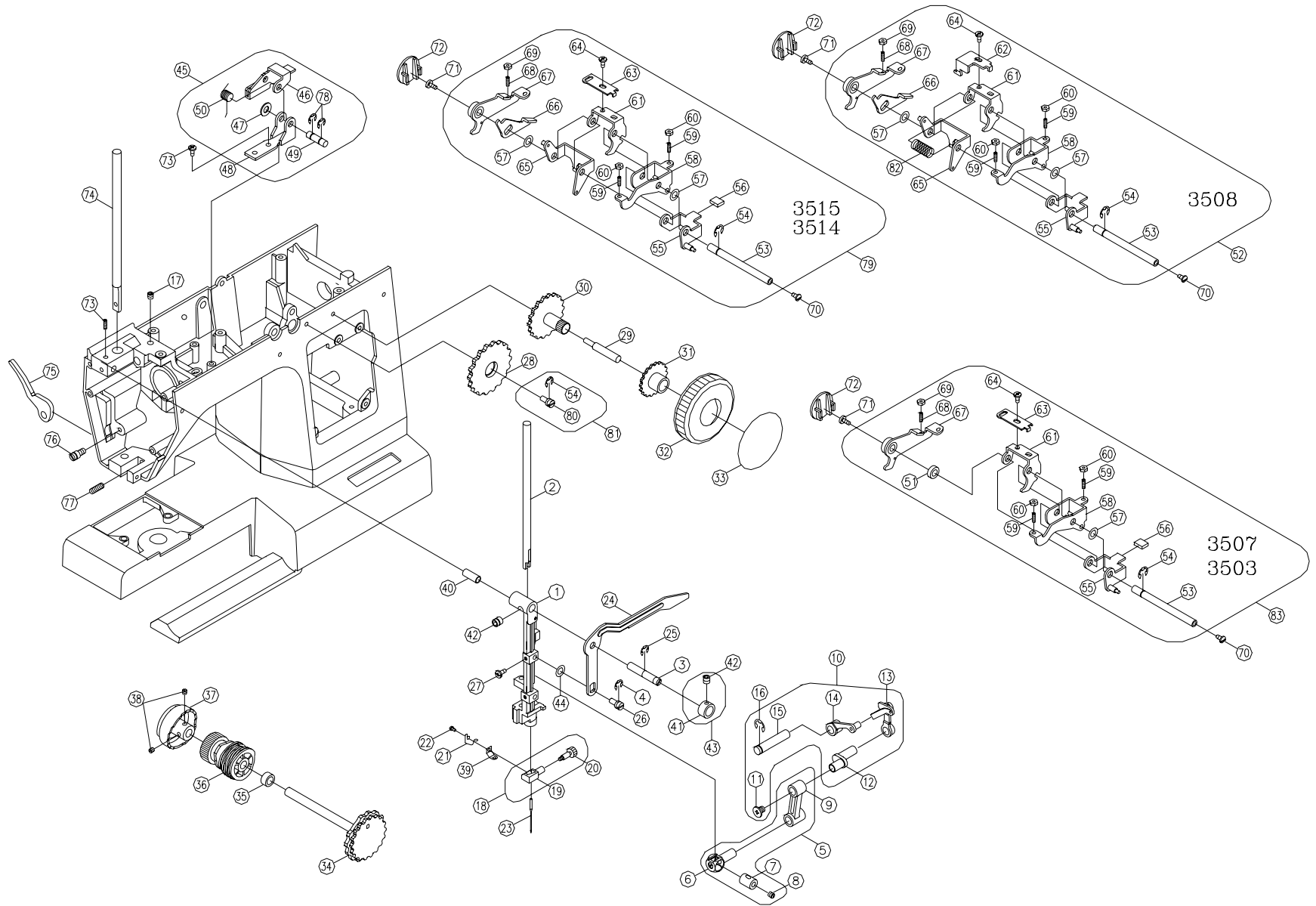


No.	Part No.	Description
1	NB0113000	Arm shaft
2	H70224002	Arm shaft balance complete
3	H70223002*	Arm shaft balance
4	004110023*	Set screw (15/64×28×8)
5	003043524	Arm shaft balance pin (3.5×24)
6	H10773000	Arm shaft bushing (1)
7	004260013	Set screw (M6×14)
8	004400250	Endure attrition washer (13×20×0.25)
9	H10793003	Arm shaft collar
10	004260023	Set screw (M6×5 C)
11	S80013003	Arm shaft worm
12	004250163	Set screw (M5×4 C)
13	H10825000	Feed cam complete
14	H10833000*	Feed cam
15	004110033*	Set screw (15/64×28×11)
16	H10863000	Arm shaft bushing (2)
17	SA0043210	Arm shaft drive belt pulley
18	SA0083003	Arm shaft clutch annulus spring
19	R10403000	Arm shaft clutch collar
20	NB1045000	Hand wheel bushing
21	004240503	Set screw (M4×4 C)
22	SA0013210	Hand wheel
23	004240056	Set screw (M4×6 B)
24	H16893210	Hand wheel decorated plate
25	K81913000	Setting cam lock pin
26	K80913003	Setting cam lock pin spring
27	K82195003	Top cover supporter plate (A)
28	K80895003	Pattern controller plate complete
29	K80903003	Pattern controller plate spring
30	003010036	E-Ring (ETW-3)
31	004250151	Set screw (M5×10 B)
32	SA0155000	Auto clutch complete
33	SA0035003*	Top cover supporter plate (A)
34	SA0073003*	Auto clutch lever shaft
35	SA0113003*	Auto clutch lever
36	SA0093003*	Auto clutch lever spring

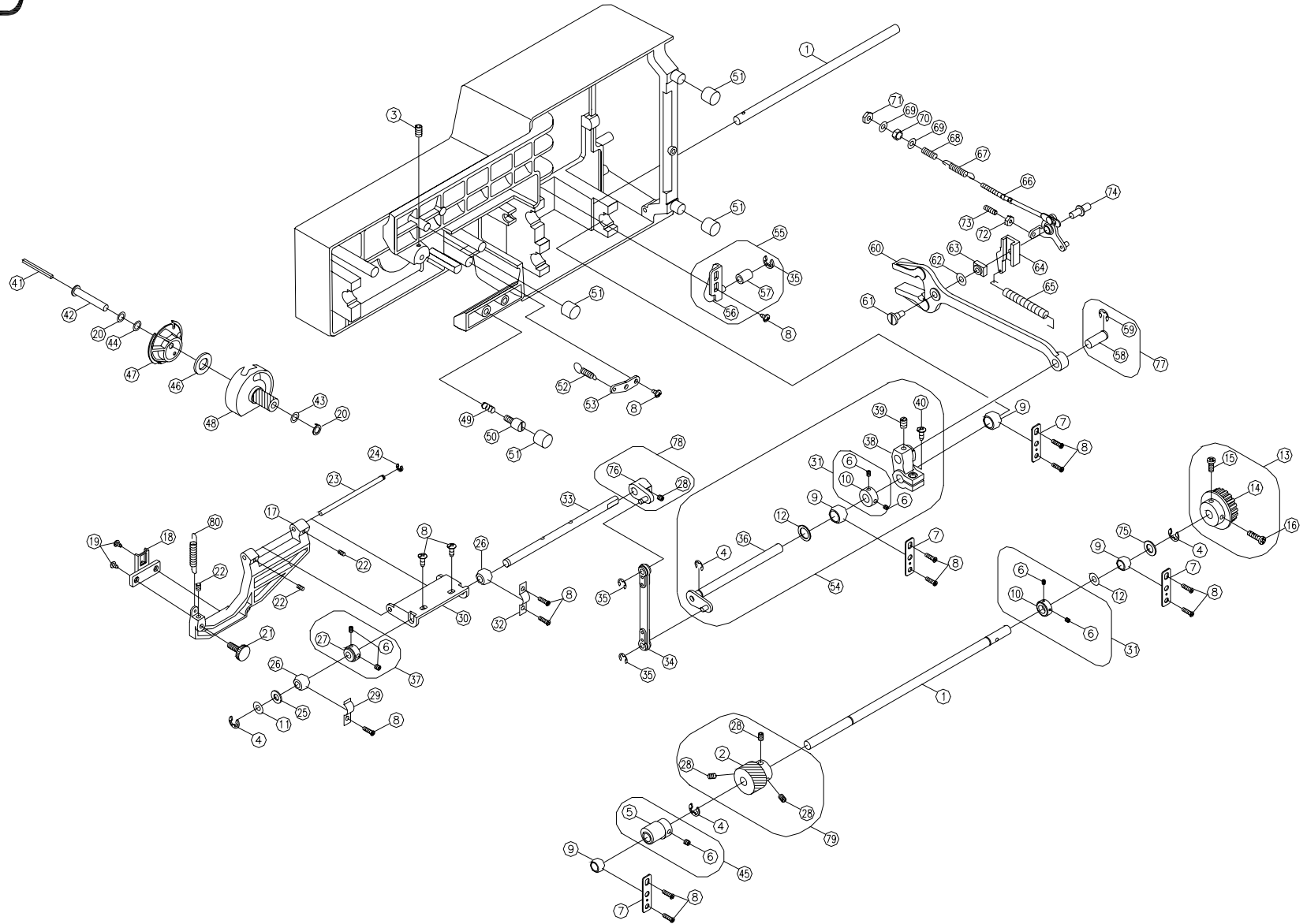
No.	Part No.	Description
37	SA0053003*	Auto clutch adjust plate
38	004230286	Set screw (M3×8 B)
39	003010056*	E-Ring (ETW-5)
40	K80545003*	Feed regulating frame plate
41	K81973003	Feed regulating frame plate spring
42	004230016*	Set screw (M3×6 A)
43	K81836003	BH adjusting lever complete
44	NB0183000	Motor drive belt (184XL037)
45	003010043	E-Ring (ETW-4)
46	K81863003	BH adjusting frame
47	004500140	Wave washer (WW-6)
48	K81893000	BH adjusting shaft collar complete
49	K81823003	BH adjusting knob shaft
50	K81813211	BH adjusting knob
51	004240106	Set screw (M4×8 A)
52	K80585003	Feed regulator base plate complete
53	ND29293210	Feed regulator dial (3507.3503)
53	NE29293210	Feed regulator dial (3508)
53	ND29283210	Feed regulator dial (3515.3508)
54	004240406	Set screw (M4×8 D)
55	NB0893210	Zig zag width dial
56	003566003	Feed regulator dial spring
57	K80633003	Feed control cam shaft
58	003010083	E-Ring (ETW-8)
59	K80635000	Zig zag width control plate complete
60	004500500	Wave washer (WW-10)
61	K80625000	Feed control cam
62	004500140	Wave washer (WW-6)
63	004400190	Flat washer (6.2×14×0.5)
64	K81896000	Feed control cam complete
65	K80673003	Zig zag width stopper
66	004230076	Set screw (M3×5 A)
67	NB1044000	Hand wheel bushing complete
68	K80683003	Reverse lever
69	K80693003	Reverse lever spring
70	K80703210	Reverse button

No.	Part No.	Description
71	K80763003	Zig zag width adjusting plate
72	K80745003	Zig zag width lever
73	NB1203001	Needle bar hook plate
74	J40153003	Presser bar spring
75	H10525000	Presser bar bracket complete
76	H10533002	Presser bar bracket
77	H10723003	Tension lever lifter spring
78	K90085003	Tension lever lifter
79	006910008	Shank complete
80	004106211	Shank complete screw
81	006908008	Zig zag presser foot complete (H))
82	NB1293000	Needle plate cover
83	004240851	Set screw (M4×6)
84	NB1283004	Needle plate
85	NB0233000	Needle plate cover open
86	NB1303000	Needle plate cover
87	004103072	Set screw (SM3/32×56 L=3)
88	004300202	Washer (4.5×10×0.8)
89	NB0073003	Needle bar supporter plate
90	NB0574000	Rotary hook plate complete
91	NB0583000	Rotary hook plate
92	NB0593000	Rotary hook plate spring (1)
93	NB0603000	Rotary hook plate spring (2)
94	004220056	Set screw (M2×2.5)
95	E1A2603000	Needle plate spring
96	H10784000	Arm shaft collar complete
97	S80014003	Arm shaft worm complete
98	H10844000	Arm shaft sprocket complete
99	H10853000	Arm shaft sprocket
100	K81693003	Top cover supporter plate (1)

C



D

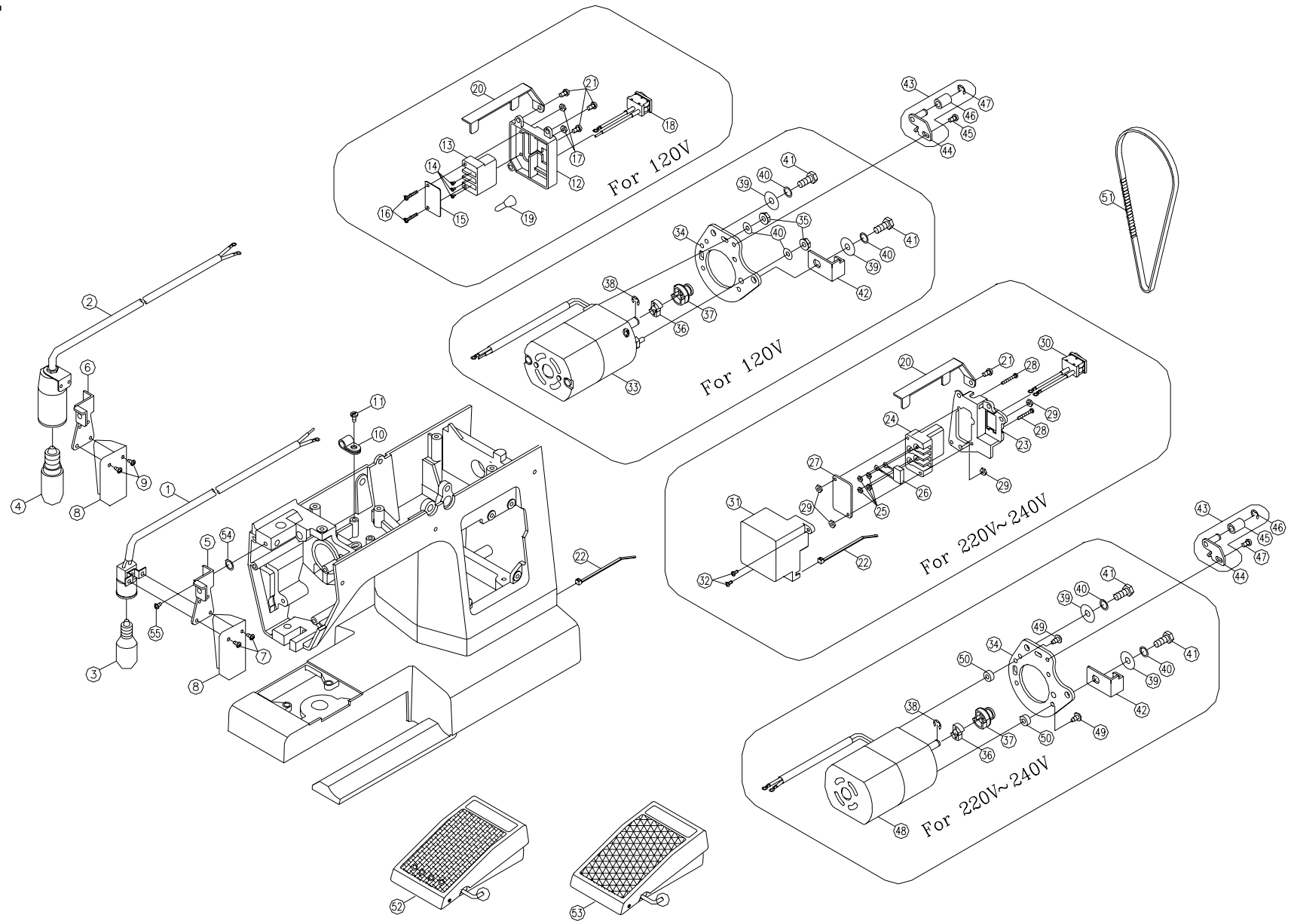


No.	Part No.	Description
1	NB0443000	Lower shaft
2	NB0503000	Lower shaft gear
3	004240223	Set screw (M4×6 C)
4	003010063	E-Ring (ETW-6)
5	NB0483000	Feed lifting rock cam
6	004240503	Set screw (M4×4 C)
7	NB1223003	Lower shaft bushing holder plate
8	004240106	Set screw (M4×8 A)
9	V10793000	Lower shaft bushing
10	V11553003	Lower shaft collar
11	004400230	Flat washer (6.7×11.8×0.25)
12	004400830	Endure attrition washer (8.2×12×0.5)
13	NB0515000	Lower shaft belt pulley complete
14	NB0523000	Lower shaft belt pulley
15	004240046	Set screw (M4×10 B)
16	004240146	Set screw (M4×15 B)
17	NB0363000	Feed rock frame
18	NB0383001	Feed dog
19	004104012	Set screw (1/8×44×5)
20	004400840	Flat washer (6.2×9.6×0.5)
21	NB0413001	Feed lifting arm set screw
22	004230443	Set screw (M3×0.5×5)
23	NB0373003	Feed rock frame shaft
24	003010036	E-Ring (ETW-3)
25	004300843	Washer (7.2×12×1)
26	R11553000	Lower shaft bushing
27	Z70123003	Collar
28	004240033	Set screw (M4×5 C)
29	NB0423003	Feed rock bushing holder plate
30	NB0353003	Feed rock bushing
31	V11564000	Lower shaft collar complete
32	NB0193003	Feed rock bushing holder plate
33	NB1123000	Feed rock shaft
34	NB0313003	Feed rock rod
35	003010043	E-Ring (ETW-4)
36	NB0283003	Feed rock rid crank

No.	Part No.	Description
37	Z70125000	Collar complete
38	NB0263000	Feed rock crank
39	004107053	Set screw (11/64×40×5)
40	004107063	Set screw (11/64×40×12)
41	NB0693000	Bobbin shaft oil cloth
42	NB0653000	Bobbin shaft
43	NB0683000	Bobbin shaft washer (3)
44	NB0673000	Bobbin shaft washer (2)
45	NB0405000	Feed lifting rock cam complete
46	NB0643000	Magnet
47	NB1275000	Shuttle hook complete
48	NB1265000	Shuttle hook holder complete
49	K82073003	Base plate adjustment screw spring
50	K82133003	Base plate adjustment screw
51	H70043000	Free arm base cushion rubber
52	NB1213003	Feed bar spring
53	NB0613003	Spring plate
54	NB0255000	Feed rock crank complete
55	NB0165000	Belt adjusting plate complete
56	NB0173003	Belt adjusting plate
57	H12323000	Belt adjusting plate pulley
58	H12073003	Frock rod pin
59	003010073	E-Ring (ETW-7)
60	K80423002	Frock rod
61	H12053000*	Feed regulating slide block shaft
62	004400450	Endure attrition washer (5.5×12×0.25)
63	H12113000*	Feed regulating slide block
64	K80443002	Feed regulating
65	K82043003	Feed regulating spring
66	K80456000	Feed regulating plate complete
67	K80523003	Feed regulating rod spring
68	H11563003	Reverse spring
69	004300202	Washer (4.5×10×0.8)
70	004707013	Nut (11/64×40 t=7.6)
71	004707022	Nut (11/64×40 t=3.8)
72	004706013	Nut (9/64×40 t=3)

No.	Part No.	Description
73	004106053	Set screw (9/64×40×11)
74	K80513000	Feed regulating shaft
75	004300936	Washer (8.2×12×0.5)
76	NB1133000	Feed rock shaft plate
77	H12064000	Frock rod pin complete
78	NB1134000	Feed rock shaft plate complete
79	NB0495000	Lower shaft gear complete
80	F30793003	Auto threaded lever spring

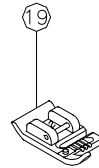
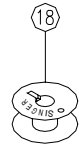
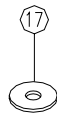
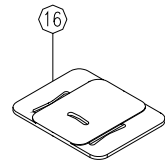
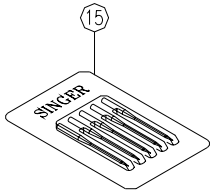
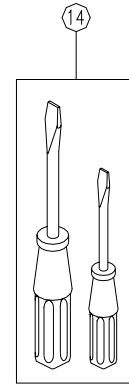
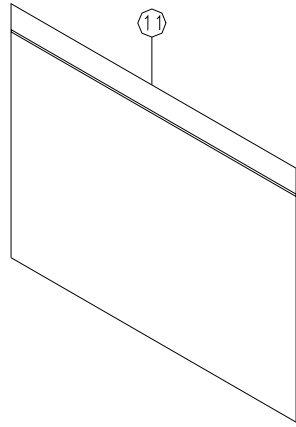
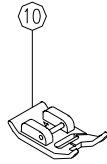
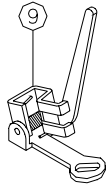
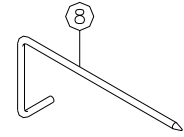
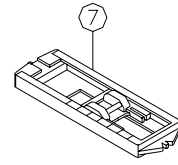
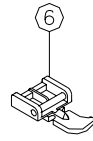
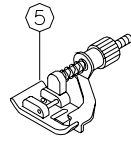
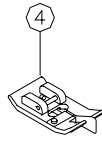
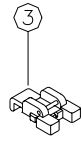
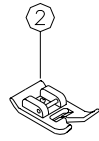
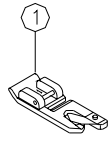
E



No.	Part No.	Description
1	002986418	Switch cord complete (for 100V&120V)
2	002132118	Switch cord complete (for 220V&240V)
3	005120011	Lamp (120V 15W E-12)
4	005240011	Lamp (240V 15W E-14)
5	002108023	Lamp holder (for 120V)
6	002091023	Lamp holder (for 220V & 240V)
7	004230055	Set screw (M3×5 B)
8	NB1373000	Shield
9	004240675	Set screw (M4×5 B)
10	002273000	Cord holder (HW-5/16)
11	004240056	Set screw (M4×6 B)
	No. 12-22	Only for 100V & 120V model
12	008465210	Receptacle holder (for 100V & 120V)
13	002080429*	Receptacle set (for 120V) black
14	004230095*	Set screw (M3×5 B)
15	002102429*	Consent insulation plate (for 120V)
16	004230186*	Set screw (M3×18 B)
17	004830015	Nut (M3 t=2.3)
18	002212029*	Switch ass'y (for 100V & 120V)
19	AA0463000	End termind (C-4) (for 100V & 120V)
20	002109023	Cord holder (2)
21	004240106	Set screw (M4×8 A)
22	002027129	Cord clip
	No. 23-31	Only for 220V – 240V model
23	002233129	Receptacle holder (for 220V – 240V)
24	002162129*	Receptacle (for 220V – 240V)
25	004830037*	Nut (M3 t=1.8)
26	002095129	Condenser
27	002025129*	Consent insulation plate (for 220V – 240V)
28	004230425*	Set screw (M3×21 B)
29	004830015	Nut (M3 t=2.3)
30	002028028*	Switch ass'y (for 220V – 240V)
31	002232129	Receptacle holder cover (for 220V – 240V)
32	004230286	Set screw (M3×8 B)
33	001001409	Motor complete (for 120V) WM-1681-7
34	002339029	Motor bracket

No.	Part No.	Description
35	004240595*	Nut (M4 t=5)
36	008059302	Cushion rubber (for 220V – 240V)
37	002127028	Motor feed pulley (for 220V-240V)
38	003010036	E-Ring (ETW-3)
39	004300396	Washer (6.2×14×1)
40	004600656	Spring washer (M6)
41	004260046	Motor complete set screw (M6×15)
42	S10343005	Motor drive belt cover stopper plate
43	K81985000	Belt adjusting plate complete
44	K81996003*	Belt adjusting plate
45	H12323000*	Belt adjusting plate pulley
46	003010043	E-Ring (ETW-4)
47	004240056	Set screw (M4×6 B)
48		Motor complete (for 220V)
48	001048109	Motor complete (for 240V RE2-12)
48	001033108	Motor complete (for 230V RW2-35)
49	004240362*	Motor bracket set screw (M4×12)
50	004300756	Washer (4.1×11.5×4.1)
51	007196111	Belt (196XL025)
52	001002409	Foot controller complete (U.S.A & Canada)
53		Foot controller complete
53	001026109	Foot controller complete (230V/YC-483-5)
53		Foot controller complete (Y-
53	001070309	Foot controller complete (240V/United Kingdom)
54	004300926	Washer (4.1×8×1)
55	004240056	Set screw (M4×6 B)

F



No.	Part No.	Description
1	006900008	Hemmer foot (No.K)
2	006908008	Zig zag foot (No.H)
3	006914008	Button foot
4	006907008	Overcastting foot (No.E)
5	006904008	Blind hem foot (No.F)
6	006905008	Zipper foot (No.I)
7	006909008	Buttonhole foot (No.B)
8	006008001	Quilting bar
9	006016008	Embroidery
10	006814008	Satin stitch foot
11	006011009	Accessories bag
12	006099008	Brush & Seam ripper complete
13	006013009	Oilier
14	006012008	Large & small screw drive
15	006175008	Needle
16	NB1003000	Embroider plate
17	006015009	Felt cushion
18	006066008	Bobbin
19	006813008	Cording foot

NOTE : When you order any spare parts from us, please

Cooperate with us by writing.

- (1) Section & Sequence No.**
- (2) Name of parts**
- (3) Voltage, if necessary**
- (4) Others, if any**
- (5) “*” means: These spare parts are not supplied individually, but can be obtained by minimum quantity at 300 pcs.**