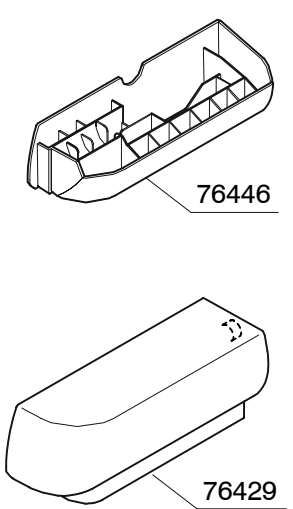
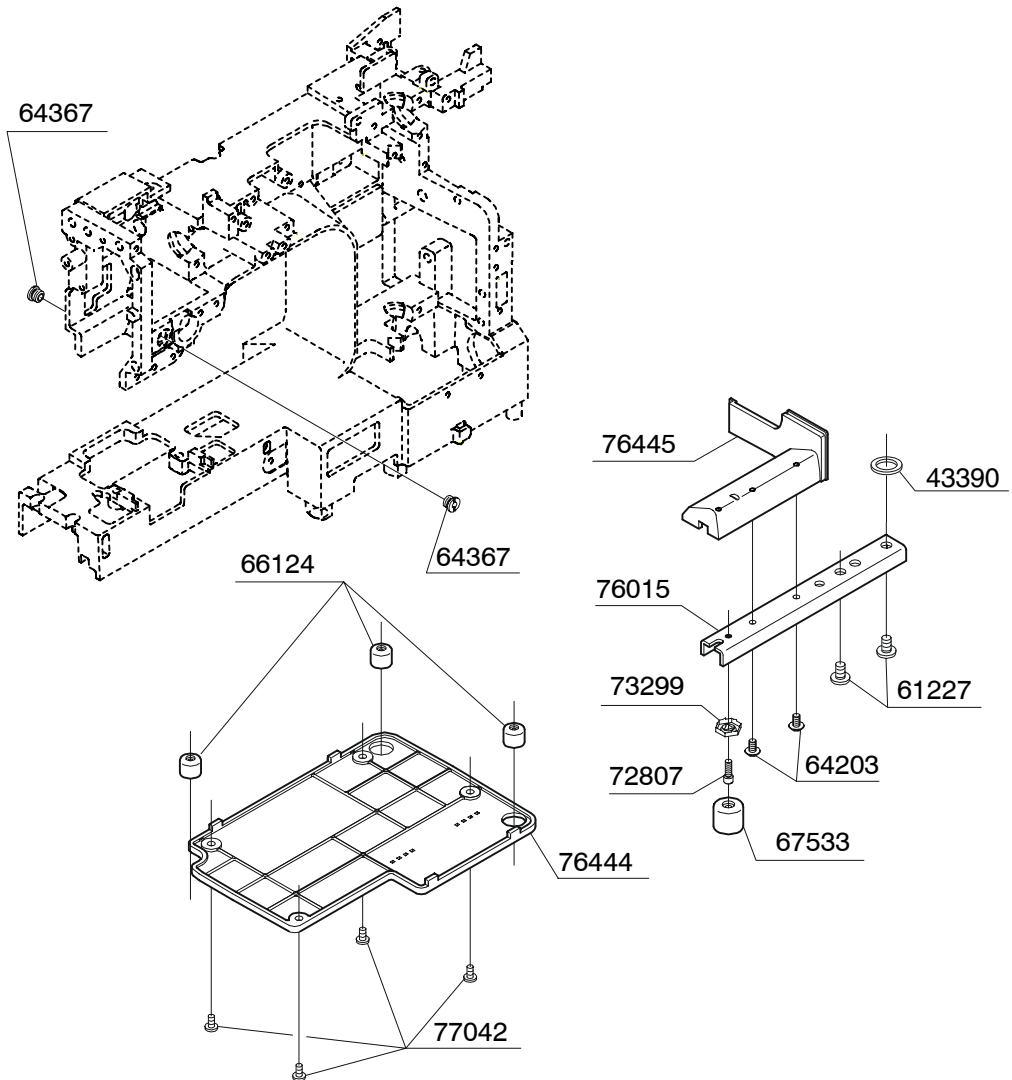
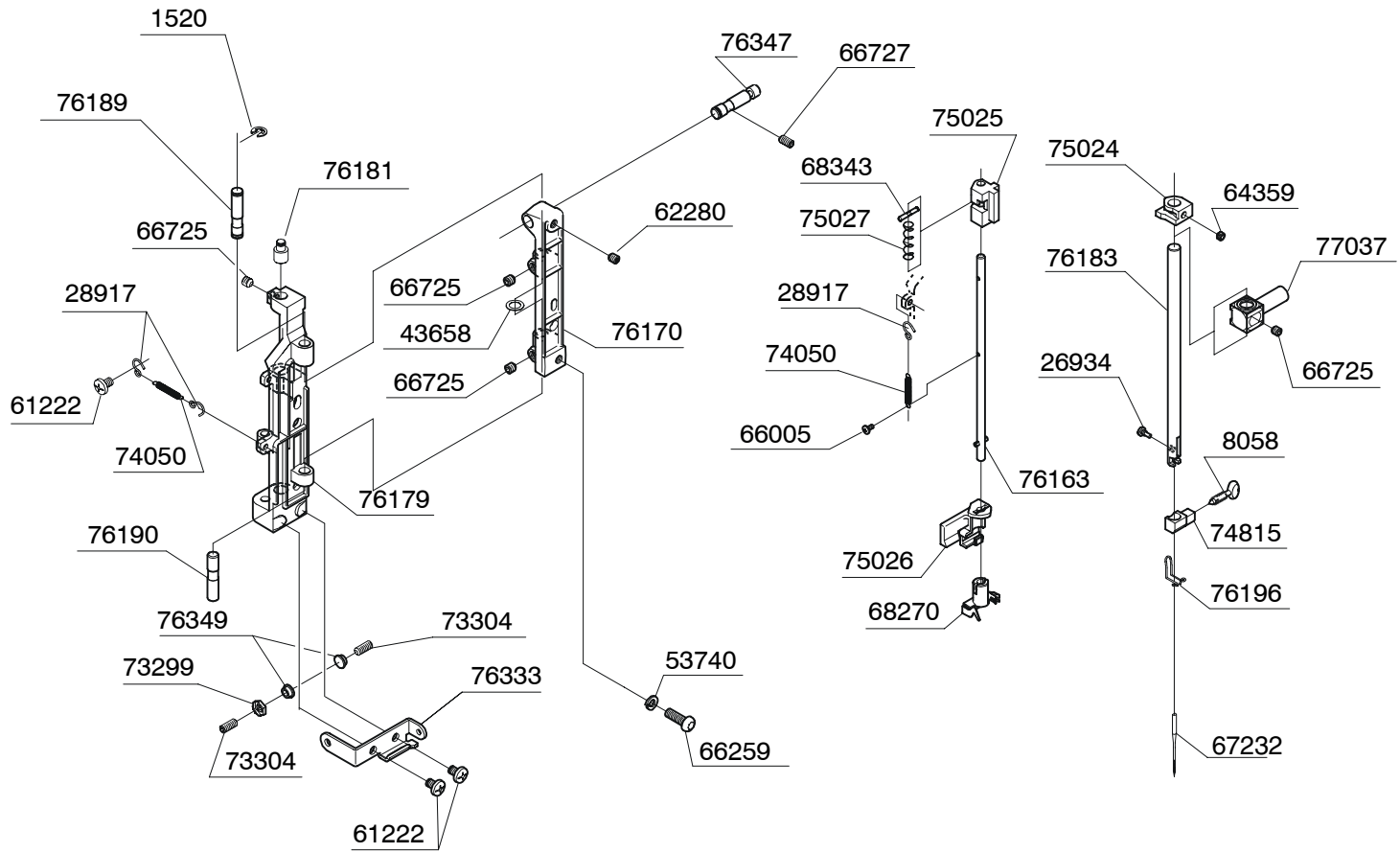


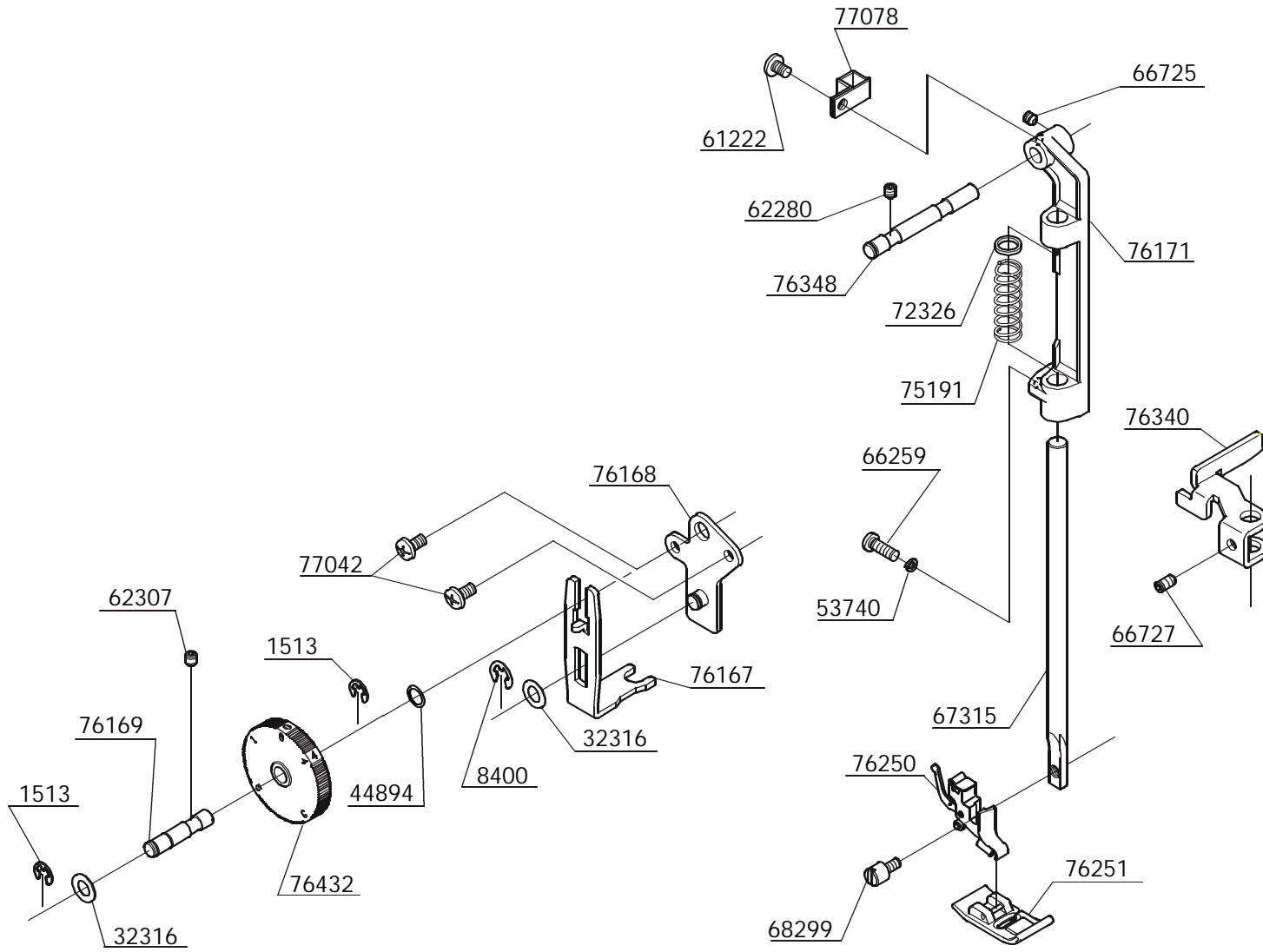
BUYER'S MODEL NO.	2638	SECTION	PAGE	REVISION	REMARKS	PART NO.	DESCRIPTION
BUYER'S MODEL NAME		—	1			43390	WASHER
FACTORY MODEL	CA97762					61227	E6 PHILIPS SCREW
ORIGINAL ISSUE	April, 2001	SERIAL NO.				64203	TAPPING SCREW
						64367	M8 SCREW
						66124	RUBBER FOOT
						67533	RUBBER CUSHION
						72807	M4 STUD SCREW
						73299	M4 TORQUE NUT
						76015	LEG
						76429	EXTENSION TABLE
						76444	BOTTOM COVER
						76445	LEG COVER
						76446	ACCESSORY BOX
						77042	M4 PHILIPS SCREW



BUYER'S MODEL NO.	2638	SECTION	PAGE	REVISION	REMARKS	PART NO.	DESCRIPTION
BUYER'S MODEL NAME		—	3			1520	E3 CLIP-ON-WASHER
FACTORY MODEL	CA97762						8058
ORIGINAL ISSUE	April, 2001	SERIAL NO.				26934	#8 SCREW
						28917	HOOK FOR SPRING
						43658	THRUST WASHER
						53740	SPRING WASHER
						61222	M4 PHILIPS SCREW
						62280	M4 SCREW
						64359	M4 SCREW
						66005	M2 PHILIPS SCREW
						66259	M4 SCREW
						66725	M4 SCREW
						66727	M4 SCREW
						67232	NEEDLE
						68270	THREADER ASSEMBLY
						68343	PIN
						73299	M4 TORQUE NUT
						73304	M4 SCREW
						74050	EXTENSION SPRING
						74815	NEEDLE CLAMP
						75024	STOPPER
						75025	GUIDE BLOCK
						75026	LEVER
						75027	COMPRESSION SPRING
						76163	THREADER SHAFT SET
						76170	SUPPORT BRACKET
						76179	NEEDLE BAR SUPPORT
						76181	SUPPORT CENTER PIN
						76183	NEEDLE BAR
						76189	SUPPORT PIN
						76190	SUPPORT CENTER PIN
						76196	THREAD GUIDE
						76333	SUPPORT THREAD GUIDE
						76347	SUPPORT BASE PIN
						76349	CAP
						77037	NEEDLE BAR CLAMP

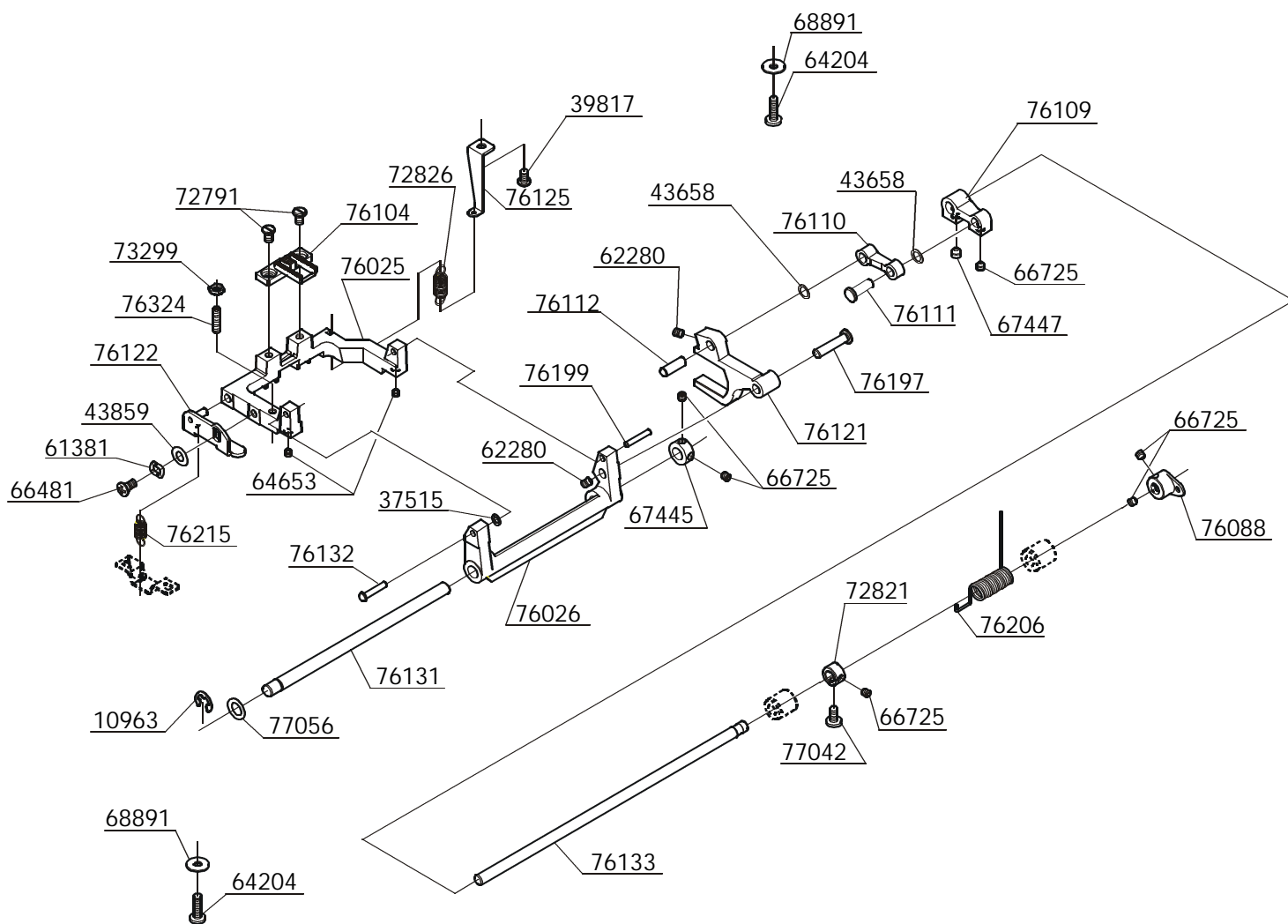


BUYER'S MODEL NO.	2638	SECTION		PAGE	4	REVISION		REMARKS		PART NO.	DESCRIPTION
BUYER'S MODEL NAME		—	4							1513	E4 CLIP-ON-WASHER
FACTORY MODEL	CA97762									8400	E5 CLIP-ON-WASHER
ORIGINAL ISSUE	April, 2001	SERIAL NO.								32316	WASHER
										44894	WASHER
										53740	SPRING WASHER
										61222	M4 PHILIPS SCREW
										62280	M4 SCREW
										62307	M4 SCREW
										66259	M4 SCREW
										66725	M4 SCREW
										66727	M4 SCREW
										67315	PRESSER BAR
										68299	#7 SCREW FOR SHANK
										72326	WASHER
										75191	COMPRESSION SPRING
										76167	DARNING CONTROL PLATE
										76168	DARNING CONTROL BASE
										76169	STRAIGHT PIN
										76171	PRESSER BAR BRACKET
										76250	PRESSER FOOT HOLDER
										76251	ZIGZAG PRESSER FOOT
										76340	PRESSER BAR BLOCK
										76348	STRAIGHT PIN
										76432	PRESSER CONTROL DIAL
										77042	M4 PHILIPS SCREW
										77078	CORD GUARD



BUYER'S MODEL NO.	2638	SECTION	PAGE	REVISION	REMARKS	PART NO.	DESCRIPTION
BUYER'S MODEL NAME		—	5			1504	E7 CLIP-ON-WASHER
FACTORY MODEL	CA97762					39817	M4 PHILIPS SCREW
ORIGINAL ISSUE	April, 2001	SERIAL NO.				43390	THRUST WASHER
						43392	THRUST WASHER
						56858	M2 PHILIPS SCREW
						60162	KNOCK PIN
						61221	M4 PHILIPS SCREW
						62280	M4 SCREW
						62307	M4 SCREW
						63501	WASHER
						66235	SECURING PLATE
						66725	M4 SCREW
						66727	M4 SCREW
						67444	COLLAR
						67447	M5 SCREW
						68439	NUT
						73208	M4 PHILIPS SCREW
						73434	M4 PHILIPS SCREW
						74902	MAGNET
						74903	MAGNET BASE
						76027	SHUTTLE RACE BASE
						76116	BALL METAL GUIDE
						76117	FEED LIFTING CAM
						76118	BOBBIN CASE STOPPER
						76130	LOWER SHAFT
						76134	SCREW
						76136	BELT METAL
						76137	SHUTTLE RACE SHAFT
						76138	SECURING PLATE
						76140	FEED REGULATING
76141	BALL METAL						
76156	RETAINER SPRING						
76157	RETAINER						
76200	COLLAR						
76203	OILING CORD						
76204	PIN						
76205	TORSION SPRING						
76211	BEVEL GEAR						
76212	BOBBIN CASE						
76281	BOBBIN						
76317	M3 PHILIPS SCREW						
76339	CUSHION						
76487	LOWER SHAFT GUIDE BRACKET						
76488	LOWER SHAFT GUIDE						
77042	M4 PHILIPS SCREW						
86005	SHUTTLE RACE						

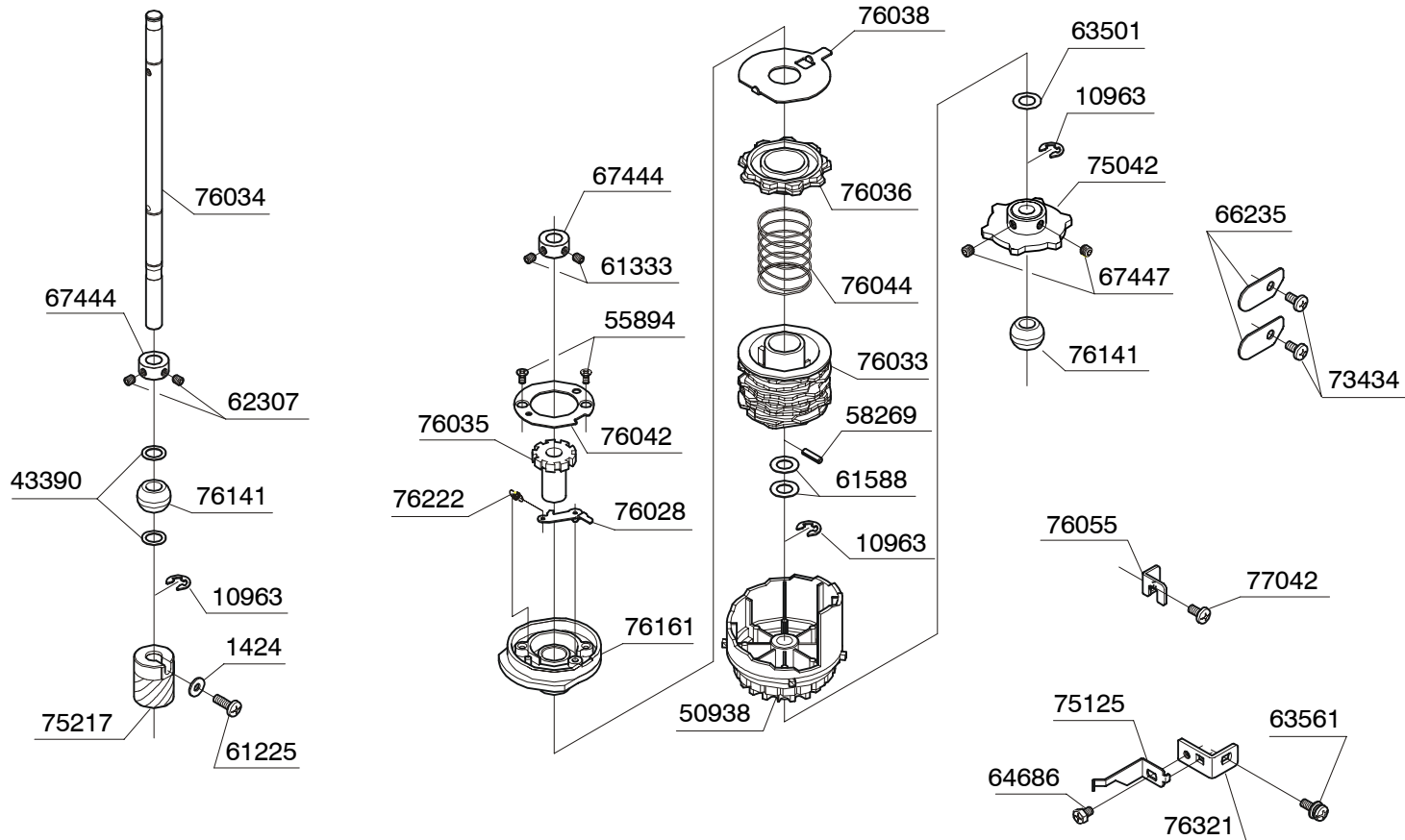
BUYER'S MODEL NO.	2638	SECTION		PAGE	6	REVISION		REMARKS		PART NO.	DESCRIPTION
BUYER'S MODEL NAME										10963	E6 CLIP-ON-WASHER
FACTORY MODEL	CA97762									37515	WASHER
ORIGINAL ISSUE	April, 2001	SERIAL NO.								39817	M4 PHILIPS SCREW
										43658	THRUST WASHER
										43859	WASHER
										61381	CRINKLE WASHER
										62280	M4 SCREW
										64204	M4 PHILIPS SCREW
										64653	M3 SCREW
										66481	M4 STUD SCREW
										66725	M4 SCREW
										67445	COLLAR
										67447	M5 SCREW
										68891	WASHER
										72791	M4 SCREW
										72821	COLLAR
										72826	EXTENSION SPRING
										73299	M4 TORQUE NUT
										76025	FEED DOG BASE
										76026	FEED REGULATING BRACKET
										76088	FEED CONTROL LINK
										76104	FEED DOG
										76109	FEED REGULATING LINK R.
										76110	FEED REGULATING LINK L.
										76111	HEADED PIN
										76112	PIN
										76121	FEED REGULATING ARM
										76122	FEED BASE ADJUSTMENT
										76125	SPRING HOOK PLATE
										76131	HORIZONTAL FEED SHAFT
										76132	SHAFT
										76133	FEED REGULATING SHAFT
										76197	HEADED PIN
										76199	PIN
										76206	TORSION SPRING
										76215	SPRING
										76324	M4 SCREW
										77042	M4 PHILIPS SCREW
										77056	WASHER



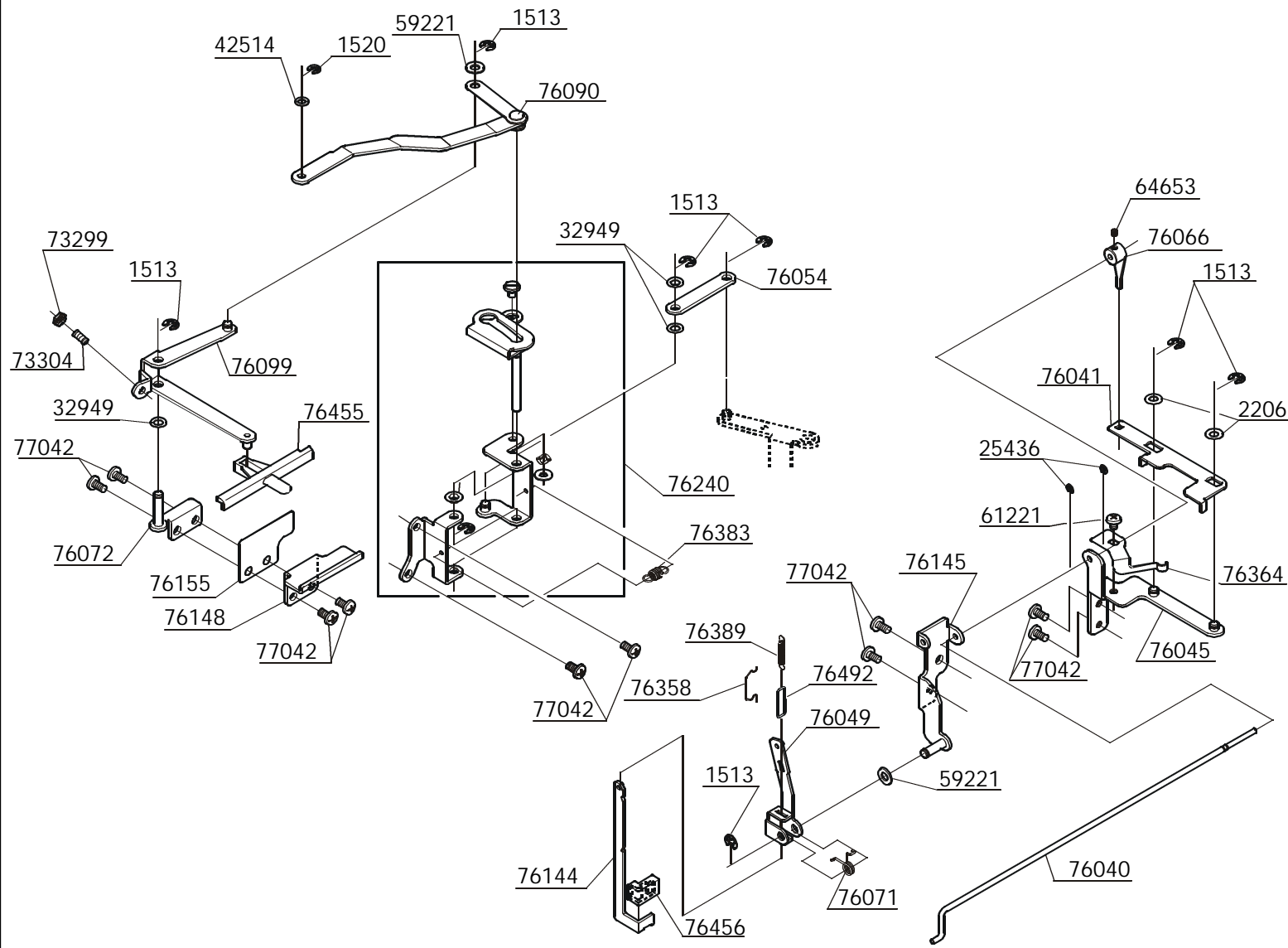
BUYER'S MODEL NO.	2638	SECTION	PAGE	REVISION	REMARKS	PART NO.	DESCRIPTION
BUYER'S MODEL NAME		—	7			1513	E4 CLIP-ON-WASHER
FACTORY MODEL	CA97762					8400	E5 CLIP-ON-WASHER
ORIGINAL ISSUE	April, 2001	SERIAL NO.				28735	CRINKLE WASHER
						32316	WASHER
						32949	WASHER
						46293	CLIP-ON-WASHER
						53321	WASHER
						58431	FIBER WASHER
						61221	M4 PHILIPS SCREW
						61222	M4 PHILIPS SCREW
						66725	M4 SCREW
						66727	M4 SCREW
						73299	M4 TORQUE NUT
						73304	M4 SCREW
						73458	M4 STUD SCREW
						73944	WASHER
						75169	HEADED PIN
						75207	GRIP RING
						76029	PINION SHAFT
						76032	CONNECTING ROD A
						76069	SECURING SHAFT PLATE
						76073	R. LINK PLATE
						76076	PIN
						76078	R. CONNECTING ROD B
						76081	R. FANCTION PLATE
						76087	R. CONNECTING ROD C
						76089	FEED CONTROL ARM
						76282	S.S. CHANGING LINK ASSEMBLY
						76344	STITCH LENGTH CONTROL CAM
						76350	BH TUNING SETTING PLATE
						76351	BH FINE TUNNING PLATE
						76354	FEED CONTROL LINK A
						76355	FEED CONTROL LINK B
						76356	TORSION SPRING
						76357	LEAF SPRING
						76363	BH WIRE ROD
						76439	STITCH LENGTH CONTROL
						76453	DIAL INDICATOR
						76454	SEAL
						76462	ECCENTRIC CAM
						77042	M4 PHILIPS SCREW

BUYER'S MODEL NO.	2638	SECTION		PAGE	8	REVISION		REMARKS		PART NO.	DESCRIPTION
BUYER'S MODEL NAME		—	8							1513	E4 CLIP-ON-WASHER
FACTORY MODEL	CA97762									8400	E5 CLIP-ON-WASHER
ORIGINAL ISSUE	April, 2001	SERIAL NO.								25436	E2 CLIP-ON-WASHER
<p>The diagram shows an exploded view of a mechanical assembly. Key components include a pattern selecting dial (76438) at the top right, a bevel gear (76150) at the bottom left, and a shaft (76052) running through the center. Various rollers (76096), springs (76085), and indicators (74819) are also shown. The assembly is held together by several screws (1513, 77042, 53321) and washers (67447, 8400). A string (76228) is attached to the assembly, and a seal (76226) is located near the top left.</p>										53321	WASHER
										67447	M5 SCREW
										74819	INDICATOR
										76052	SHAFT
										76085	SPRING
										76096	ROLLER
										76097	INDICATOR DRIVER PULLEY
										76150	BEVEL GEAR
										76226	SEAL
										76228	STRING(TETRON)
76235	STRAIGHT PIN										
76371	INDICATOR GUIDE PLATE										
76438	PATTERN SELECTING DIAL										
77042	M4 PHILIPS SCREW										

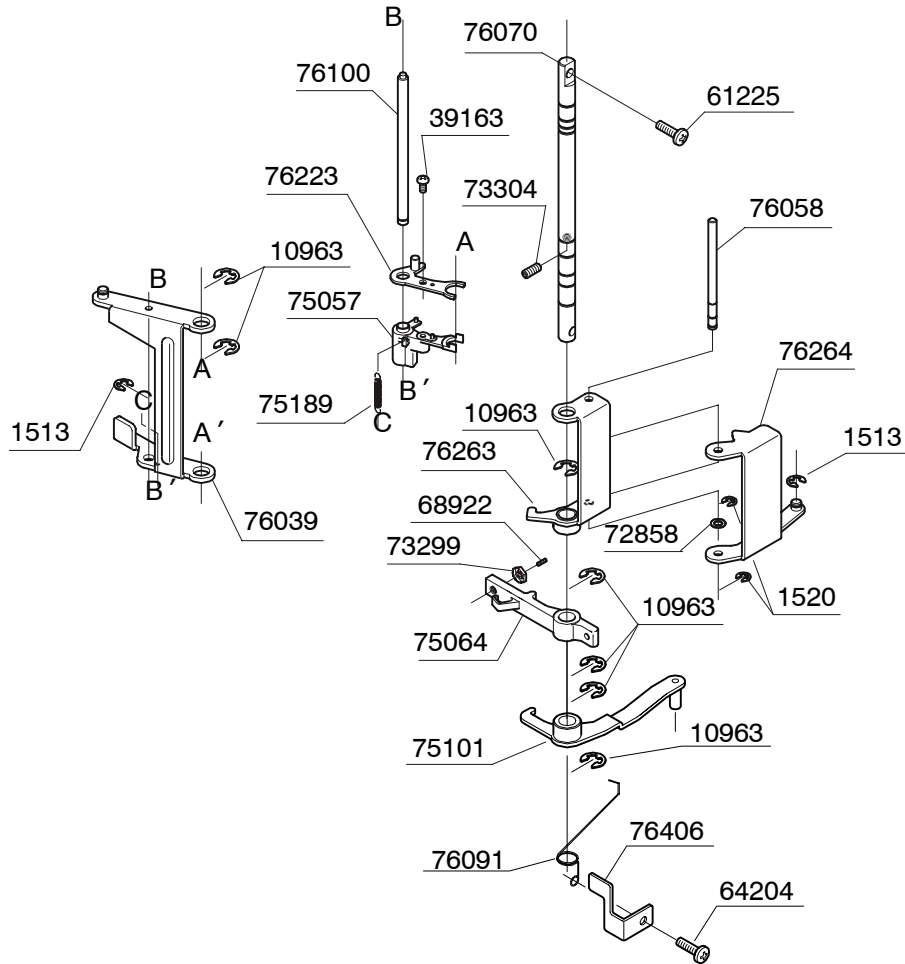
BUYER'S MODEL NO.	2638	SECTION	PAGE	REVISION	REMARKS	PART NO.	DESCRIPTION
BUYER'S MODEL NAME		—	9			1424	WASHER
FACTORY MODEL	CA97762						10963
ORIGINAL ISSUE	April, 2001	SERIAL NO.				43390	THRUST WASHER
						50938	PATTERN SELECTING CAM
						55894	TAPPING SCREW
						58269	SPRING PIN
						61225	M4 PHILIPS SCREW
						61333	M4 SCREW
						61588	WASHER
						62307	M4 SCREW
						63501	WASHER
						63561	M4 PHILIPS SCREW WITH WASHER
						64686	M4 BOLT
						66235	SECURING PLATE
						67444	COLLAR
						67447	M5 SCREW
						73434	M4 PHILIPS SCREW
						75042	STRETCH STITCH CAM
						75125	LEAF SPRING
						75217	WORM GEAR
						76028	BH NOTCH
						76033	PATTERN CAM
						76034	CAM SHAFT
						76035	PINION
						76036	BH WIOTH CAM
						76038	BH RING PLATE
						76042	BH CAP
						76044	COMPRESSION SPRING
						76055	RING STOPPER
						76141	BALL METAL
						76161	BH CAM
						76222	SPRING
						76321	BRACKET
						77042	M4 PHILIPS SCREW



BUYER'S MODEL NO.	2638	SECTION		PAGE	10	REVISION		REMARKS		PART NO.	DESCRIPTION
BUYER'S MODEL NAME										1513	E4 CLIP-ON-WASHER
FACTORY MODEL	CA97762									1520	E3 CLIP-ON-WASHER
ORIGINAL ISSUE	April, 2001	SERIAL NO.								2206	WASHER
										25436	E2 CLIP-ON-WASHER
										32949	WASHER
										42514	WASHER
										59221	WASHER
										61221	M4 PHILIPS SCREW
										64653	M3 SCREW
										73299	M4 TORQUE NUT
										73304	M4 SCREW
										76040	BH CONNECTING ROD A
										76041	BH SLIDE PLATE A
										76045	BH SECURING PLATE
										76049	BH CHANGEOVER LEVER
										76054	ZZ CONTROL ARM
										76066	BH CHANGE LEVER B
										76071	TORSION SPRING
										76072	ZZ LEVER SECURING PLATE
										76090	ZIGZAG GUIDE BAR ASSEMBLY
										76099	ZZ CONTROL PLATE
										76144	BH FUNCTIONING PLATE
										76145	BH SECURING PLATE
										76148	ZZ LEVER BASE
										76155	TORQUE SPRING
										76240	ZZ WIDTH CONTROL BASE ASSEMBLY
										76358	NOTCH SPRING
										76364	PLATE SPRING
										76383	EXTENSION SPRING
										76389	EXTENSION SPRING
										76455	ZZ LEVER
										76456	BH LEVER CAP
										76492	SPRING
										77042	M4 PHILIPS SCREW

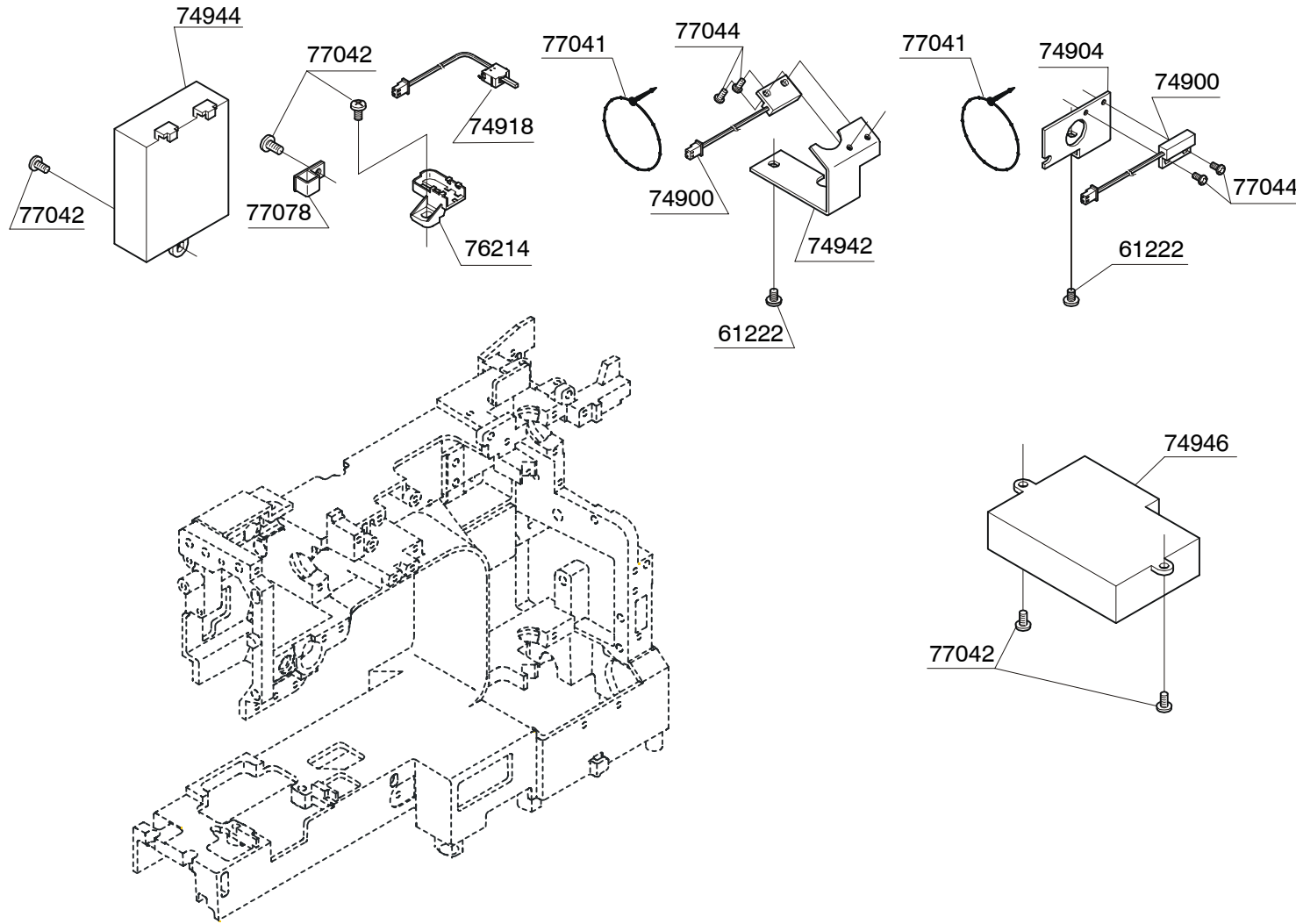


BUYER'S MODEL NO.	2638	SECTION	PAGE	REVISION	REMARKS	PART NO.	DESCRIPTION
BUYER'S MODEL NAME		—	11			1513	E4 CLIP-ON-WASHER
FACTORY MODEL	CA97762					1520	E3 CLIP-ON-WASHER
ORIGINAL ISSUE	April, 2001	SERIAL NO.				10963	E6 CLIP-ON-WASHER
						39163	TAPPING SCREW
						61225	M4 PHILIPS SCREW
						64204	M4 PHILIPS SCREW
						68922	M4 SCREW
						72858	WASHER
						73299	M4 TORQUE NUT
						73304	M4 SCREW
						75057	ZIGZAG GUIDE BLOCK
						75064	PATTERN SELECTING CAM CLAW
						75101	S.STITCH CAM FOLLOWER
						75189	EXTENSION SPRING
						76039	GUIDE PLATE
						76058	STRAIGHT SHAFT
						76070	GUIDE SHAFT A
						76091	TORSION SPRING
						76100	GUIDE SHAFT B
						76223	PATTERN REGULATING PLATE
						76263	BH FEED REGULATING PLATE
						76264	BH FEED PLATE
						76406	LIMITING PLATE



BUYER'S MODEL NO.	2638	SECTION	PAGE	REVISION	REMARKS	PART NO.	DESCRIPTION
BUYER'S MODEL NAME		—	12			57746	TAPPING SCREW
FACTORY MODEL	CA97762						72936
ORIGINAL ISSUE	April, 2001	SERIAL NO.				74894	MOTOR
						74908	SWITCH ASSEMBLY
						74948	HARNESS
						74958	WIRING CORD
						74959	WIRING CORD
						74971	TERMINAL BLOCK
						74972	M3 SCREW
						74973	M3 PHILIPS SCREW
						75061	MOTOR PULLEY
						75078	MOTOR PULLEY FLANGE
						76037	MOTOR BELT
						76186	LAMP BASE PLATE
						76407	LIMITING PLATE
						76449	TERMINAL COVER
						76483	WASEWR
						76493	SPRING
						77041	UNITY FASTENER
						77042	M4 PHILIPS SCREW

BUYER'S MODEL NO.	2638	SECTION		PAGE	13	REVISION		REMARKS		PART NO.	DESCRIPTION
BUYER'S MODEL NAME										61222	M4 PHILIPS SCREW
FACTORY MODEL	CA97762									74900	SENSOR
ORIGINAL ISSUE	April, 2001	SERIAL NO.								74904	SENSOR PLATE (TOP)
										74918	LEVER SWITCH ASSEMBLY
										74944	CIRCUIT BOARD(A)
										74946	CIRCUIT BOARD(B)
										74942	SENSOR PLATE(BOTTOM)
										76214	SWITCH COVER
										77041	UNITY FASTENER
										77042	M4 PHILIPS SCREW
										77044	M3 PHILIPS SCREW
										77078	CORD GUARD

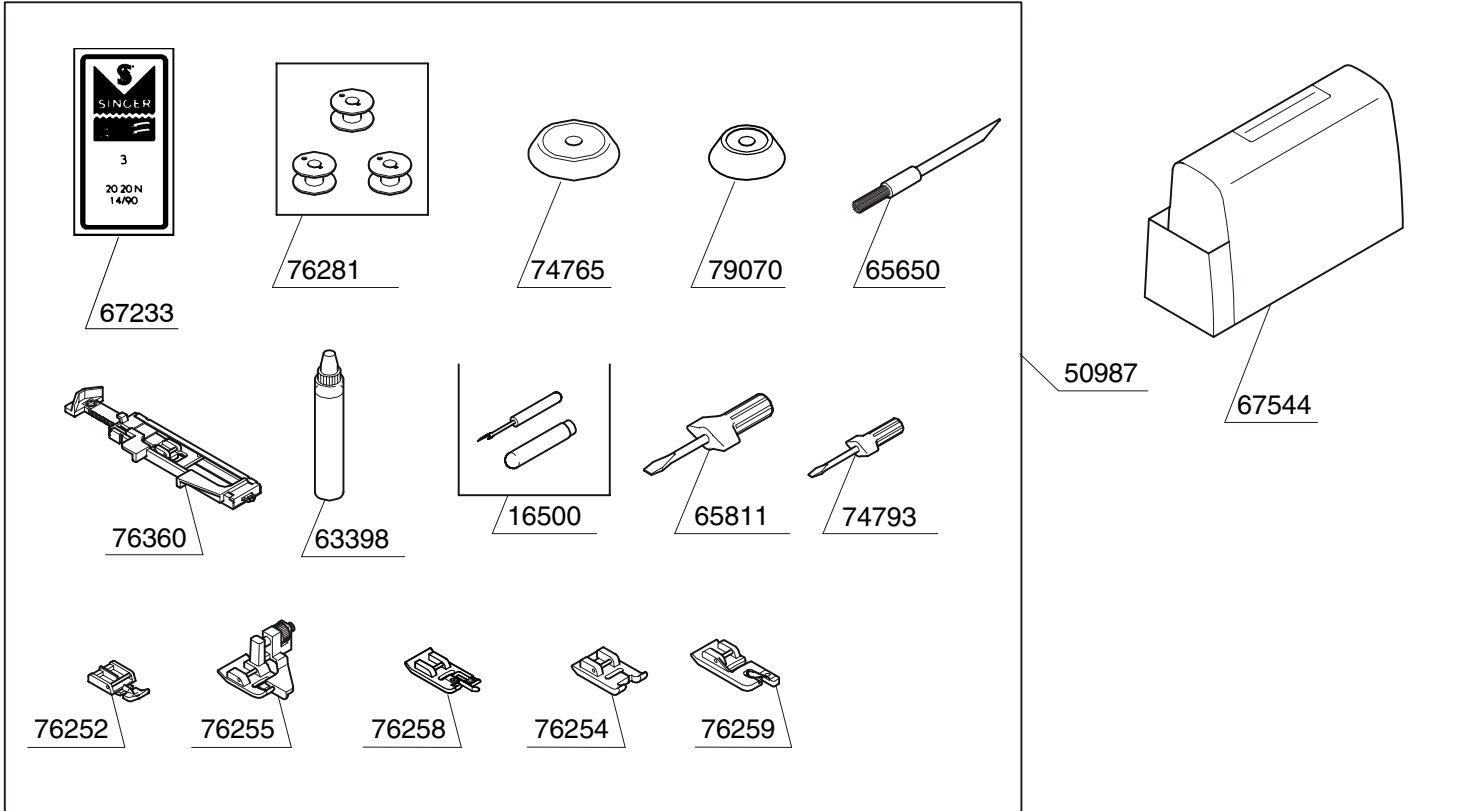


BUYER'S MODEL NO.	2638	SECTION	PAGE	REVISION	REMARKS	PART NO.	DESCRIPTION
BUYER'S MODEL NAME		—	14			1504	E7 CLIP-ON-WASHER
FACTORY MODEL	CA97762					1513	E4 CLIP-ON-WASHER
ORIGINAL ISSUE	April, 2001	SERIAL NO.				1939	RUBBER RING
						28917	HOOK FOR SPRING
						42359	CRINKLE WASHER
						43392	THRUST WASHER
						56858	M2 PHILIPS SCREW
						62215	M4 NUT
						64051	M4 PHILIPS SCREW
						68332	EXTENSION SPRING
						68380	M4 STUD SCREW
						72266	STUD SCREW
						72791	M4 SCREW
						74291	EXTENSION SPRING
						75130	RATCHET A
						75131	RATCHET B
						75163	M4 STUD SCREW
						75196	TORSION SPRING
						76082	TORSION SPRING
						76084	STRAIGHT PIN
						76103	NEEDLE PLATE
						76114	COVER GUIDE (R)
						76115	THREAD CONTROL PLATE
						76158	RELEASE LEVER
						76159	COMPRESSION LEVER
						76175	TENSION RELEASE LEVER A
						76177	SECURING PLATE
						76188	D. T. CONTROL PLATE
						76198	SCREW WITH SHAFT
						76237	BOBBIN WINDER COMPLETE
						76275	AUTO-TENSION PLATE A
						76276	AUTO-TENSION PLATE B
						76277	STUD SCREW
						76278	STUD SCREW
						76326	PROTECTION PLATE
						76345	TENSION RELEASE LEVER B
						76389	EXTENSION SPRING
						76390	SECURING PLATE
						76428	THREAD GUIDE PLATE UNIT
						76430	REVERSE STITCH LEVER
						76443	PRESSURE BAR LIFTER
						77042	M4 PHILIPS SCREW
						85164	SHUTTLE RACE COVER
						85183	COVER GUIDE (L)
						85419	SEAL

BUYER'S MODEL NO.	2638	SECTION	PAGE	REVISION	REMARKS	PART NO.	DESCRIPTION
BUYER'S MODEL NAME		—	15			4844	WASHER
FACTORY MODEL	CA97762						47181
ORIGINAL ISSUE	April, 2001	SERIAL NO.				56858	M2 PHILIPS SCREW
						58981	TAPPING SCREW
						61225	M4 PHILIPS SCREW
						64203	TAPPING SCREW
						64360	TOOTHED WASHER
						64617	TAPPING SCREW
						64629	CORD GUIDE
						73208	M4 PHILIPS SCREW
						74288	TORSION SPRING
						74401	SPOOL PIN
						74817	PANEL
						74823	PATTERN CHANGER COVER
						74824	CONTROL PLATE
						74825	FACE COVER
						74898	SWITCH
						74899	SLIDE VOLUME
						74960	SWITCH COVER
						76192	REFLECTING SHEET
						76202	SPOOL PIN
						76207	START SW. BUTTON
						76224	STITCH LENGTH INDICATOR
						76242	BLADE
						76244	TORSION SPRING
						76317	M3 PHILIPS SCREW
						76391	SEAL
						76423	SPOOL STAND
						76434	BE COVER
						76435	BOTTOM COVER
						76440	BOBBIN WINDER LATCH
						76447	ARM CAP
						76448	DROP KNOB
						76450	SV KNOB
						76452	BLADE FIXTURE
						76511	SEAL
						77042	M4 PHILIPS SCREW
						85273	WASHER

BUYER'S MODEL NO.	2638	SECTION	PAGE	REVISION	REMARKS	PART NO.	DESCRIPTION
BUYER'S MODEL NAME		—	16			1424	WASHER
FACTORY MODEL	CA97762						1520
ORIGINAL ISSUE	April, 2001	SERIAL NO.				61224	M4 PHILIPS SCREW
						61225	M4 PHILIPS SCREW
						63942	M4 SQUARE NUT
						64957	TAPPING SCREW
						72791	M4 SCREW
						73451	THREAD GUIDE
						76021	HANDLE STUD
						76193	M4 STUD SCREW
						76243	THREAD GUIDE PLATE
						76395	TAPPING SCREW
						76442	HANDLE
						76458	BUTTONHOLE SEAL
						76459	BH FINE TUNING DIAL
						77042	M4 PHILIPS SCREW

BUYER'S MODEL NO.	2638	SECTION	—	PAGE	17	REVISION		REMARKS		PART NO.	DESCRIPTION
BUYER'S MODEL NAME										16500	BUTTONHOLE OPENER
FACTORY MODEL	CA97762									50987	ACCESSORY SET
ORIGINAL ISSUE	April, 2001	SERIAL NO.								63398	SEWING MACHINE OIL
										65650	CLEANING BRUSH
										65811	LARGE SCREW DRIVER
										67233	NEEDLE SET(3 PCS)
										67544	MACHINE COVER
										69984	BOOK
										74765	SPOOL PIN CAP
										74793	SMALL SCREW DRIVER
										74968	FOOT CONTROL
										76252	ZIPPER FOOT
										76254	SATIN FOOT
										76255	BLIND STITCH FOOT
										76258	OVERCASTING FOOT
										76259	ROLLED HEMMER
										76281	BOBBIN
										76360	BUTTONHOLE FOOT
										79070	SPOOL PIN CAP



BUYER'S MODEL NO. 2638

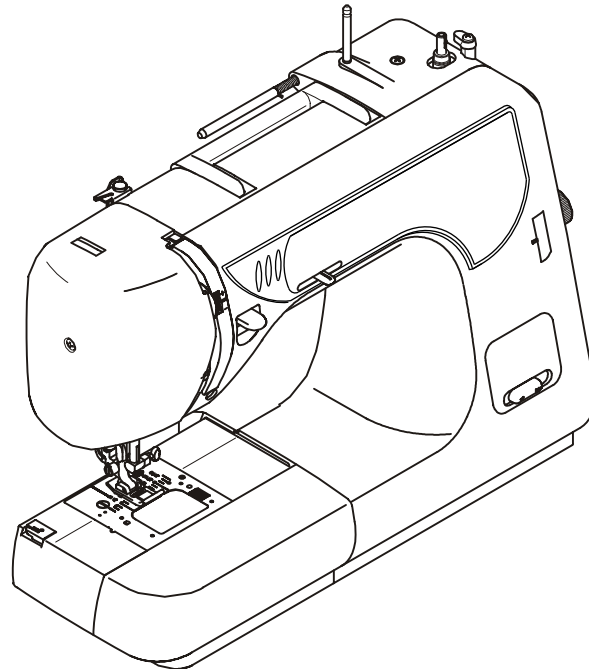
FACTORY MODEL CA97762

ORIGINAL ISSUE April, 2001

SECTION —

REFER TO IMPORTANT NOTICE BELOW

PARTS LIST FOR Model 2638



IMPORTANT:

WHEN ORDERING THE PARTS ALWAYS CHECK THE SERIAL NUMBER OF THE MACHINE.

FIRST DIGIT OF THE SERIAL NUMBER MUST MATCH WITH THE LAST DIGIT OF THE FACTORY MODEL ABOVE.

SINGER	
MODEL-MODÈLE 2638	SERIAL-NO. DE SÉRIE 2 x x x x x x
 LISTED E465 EST1486 SEWING MACHINE	120V 0,8A 60Hz MADE IN CHINA FABRIQUE EN CHINE

FIRST DIGIT

SINGER