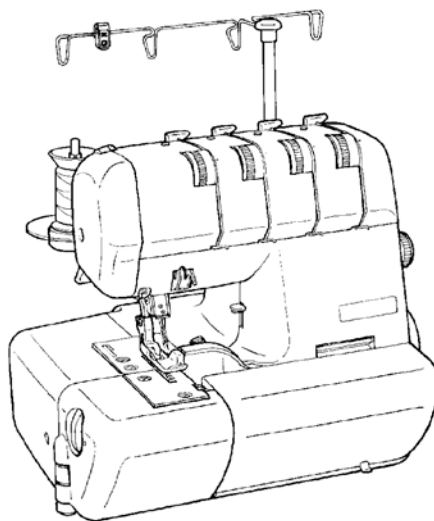


REFER TO IMPORTANT NOTICE BELOW

**PARTS LIST
FOR**

Model Stylist™ II Serger

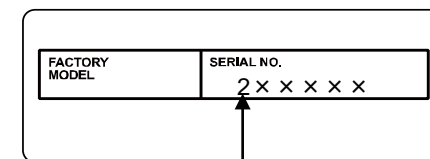


SINGER®

IMPORTANT:

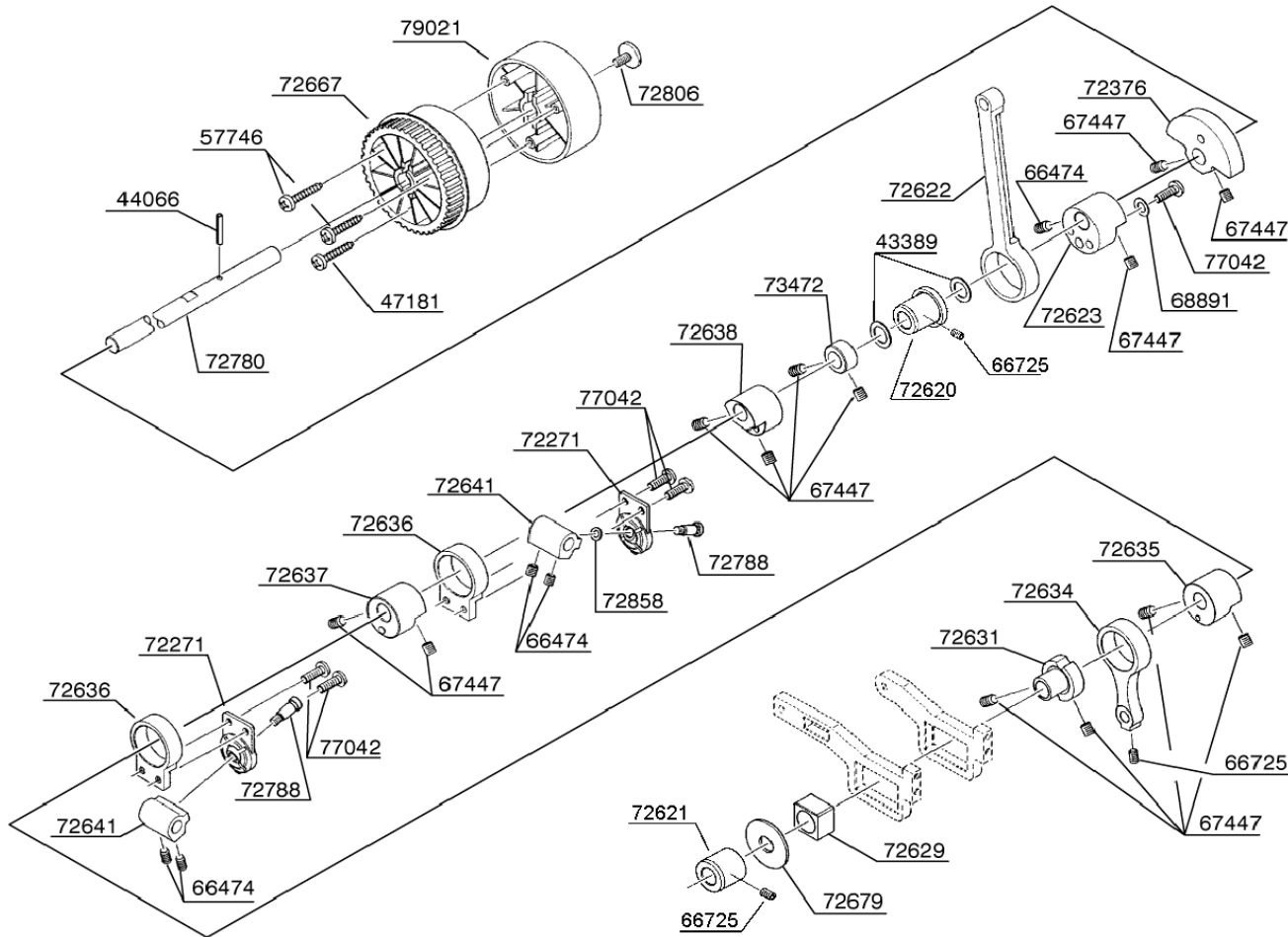
WHEN ORDERING THE PARTS
ALWAYS CHECK THE SERIAL
NUMBER OF THE MACHINE.

FIRST DIGIT OF THE SERIAL
NUMBER MUST MATCH WITH
THE LAST DIGIT OF THE
FACTORY
MODEL ABOVE.



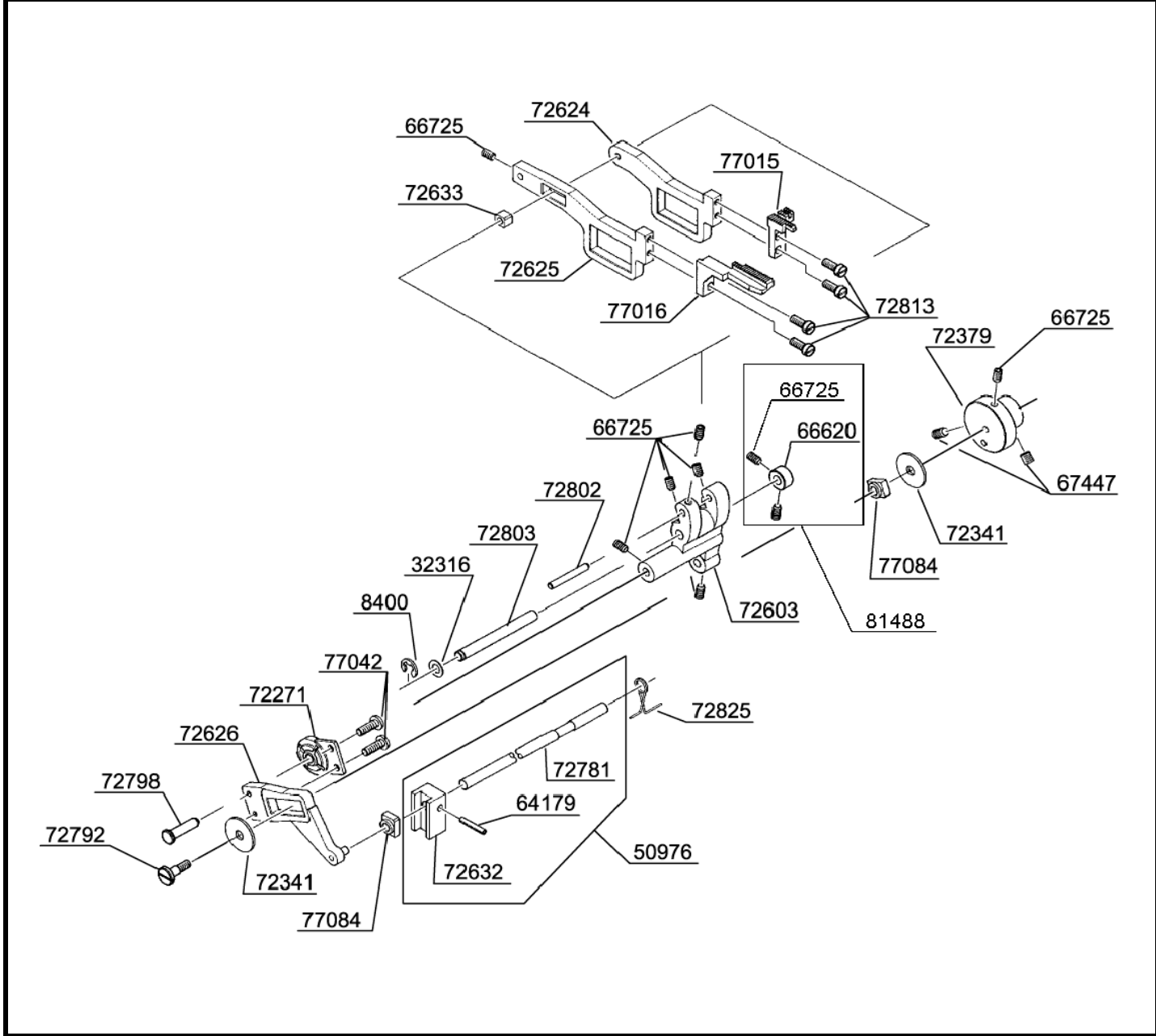
FIRST DIGIT

BUYER'S MODEL NO.	14J250	SECTION	PAGE	REVISION	REMARKS	PART NO.	DESCRIPTION
BUYER'S MODEL NAME		-	1			1	43389 THRUST WASHER
FACTORY MODEL	CA08762					2	44066 SPRING PIN
ORIGINAL ISSUE	MAY 2010	SERIAL NO.				3	47181 M4 PHILLIPS SCREW



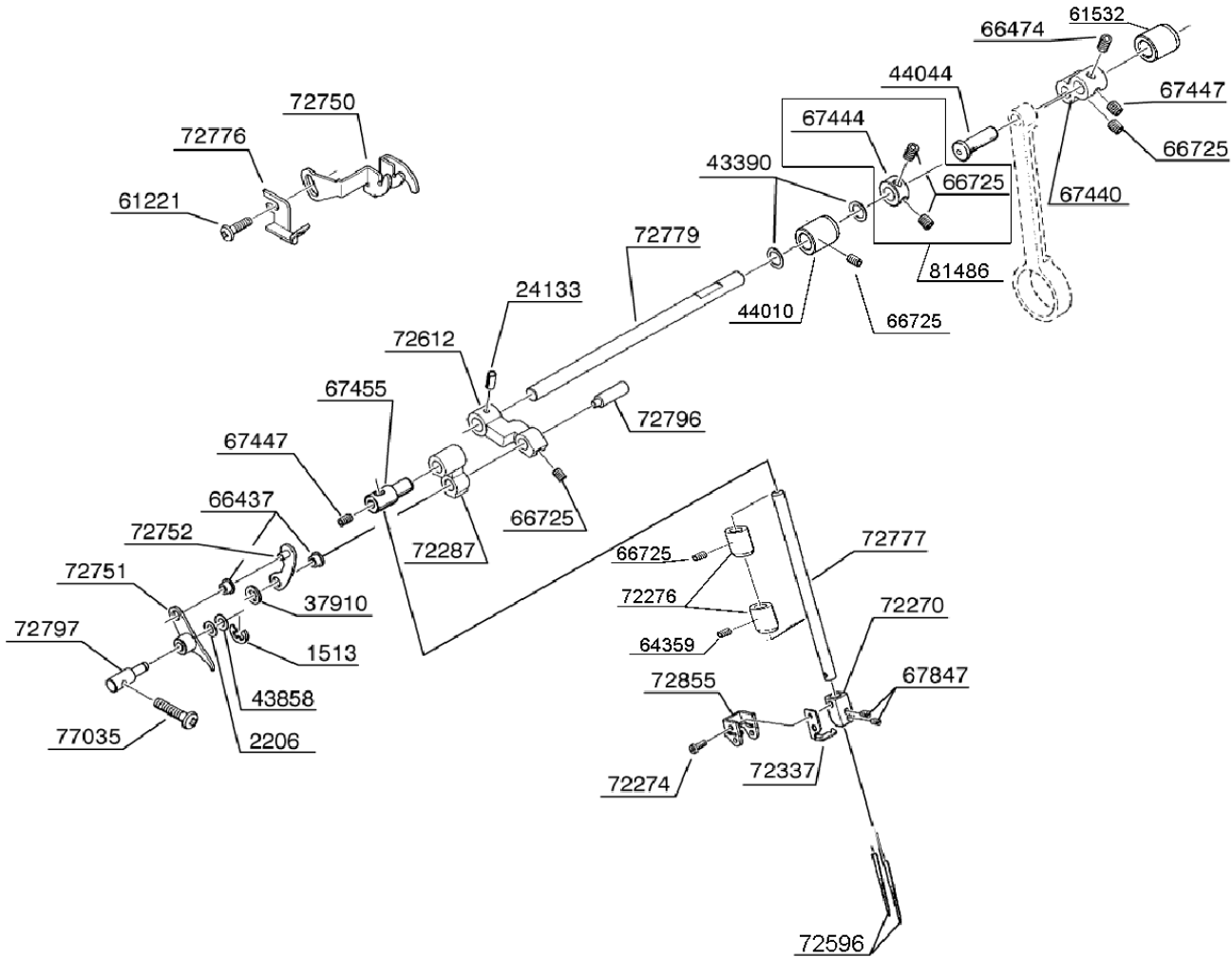
PART NO.	DESCRIPTION
1	43389 THRUST WASHER
2	44066 SPRING PIN
3	47181 M4 PHILLIPS SCREW
4	57746 TAPPING SCREW
5	66474 M5 SCREW
6	66725 M4 SCREW
7	67447 M5 SCREW
8	68891 WASHER
9	72271 BALL JOINT
10	72376 BALANCE CAM
11	72620 BUSH
12	72621 BUSH
13	72622 CRANK ROD
14	72623 ECCENTRIC CAM
15	72629 SLIDE BLOCK
16	72631 ECCENTRIC CAM
17	72634 CRANK ROD
18	72635 ECCENTRIC CAM
19	72636 ECCENTRIC CAM
20	72637 ECCENTRIC CAM
21	72638 ECCENTRIC CAM
22	72641 LOOPER DRIVING ARM
23	72667 BELT PULLEY
24	72679 NYLON WASHER
25	72780 MAIN SHAFT
26	72788 M4 STUD SCREW
27	72806 M5 SCREW
28	72858 WASHER
29	73472 COLLAR
30	77042 M4 PHILLIPS SCREW
31	79021 HAND WHEEL
32	
33	
34	
35	
36	
37	
38	
39	
40	
41	
42	
43	
44	
45	
46	
47	
48	
49	
50	

BUYER'S MODEL NO.	14J250	SECTION	PAGE	REVISION	REMARKS	PART NO.	DESCRIPTION
BUYER'S MODEL NAME		-	2				
FACTORY MODEL	CA08762						
ORIGINAL ISSUE	MAY 2010	SERIAL NO.					



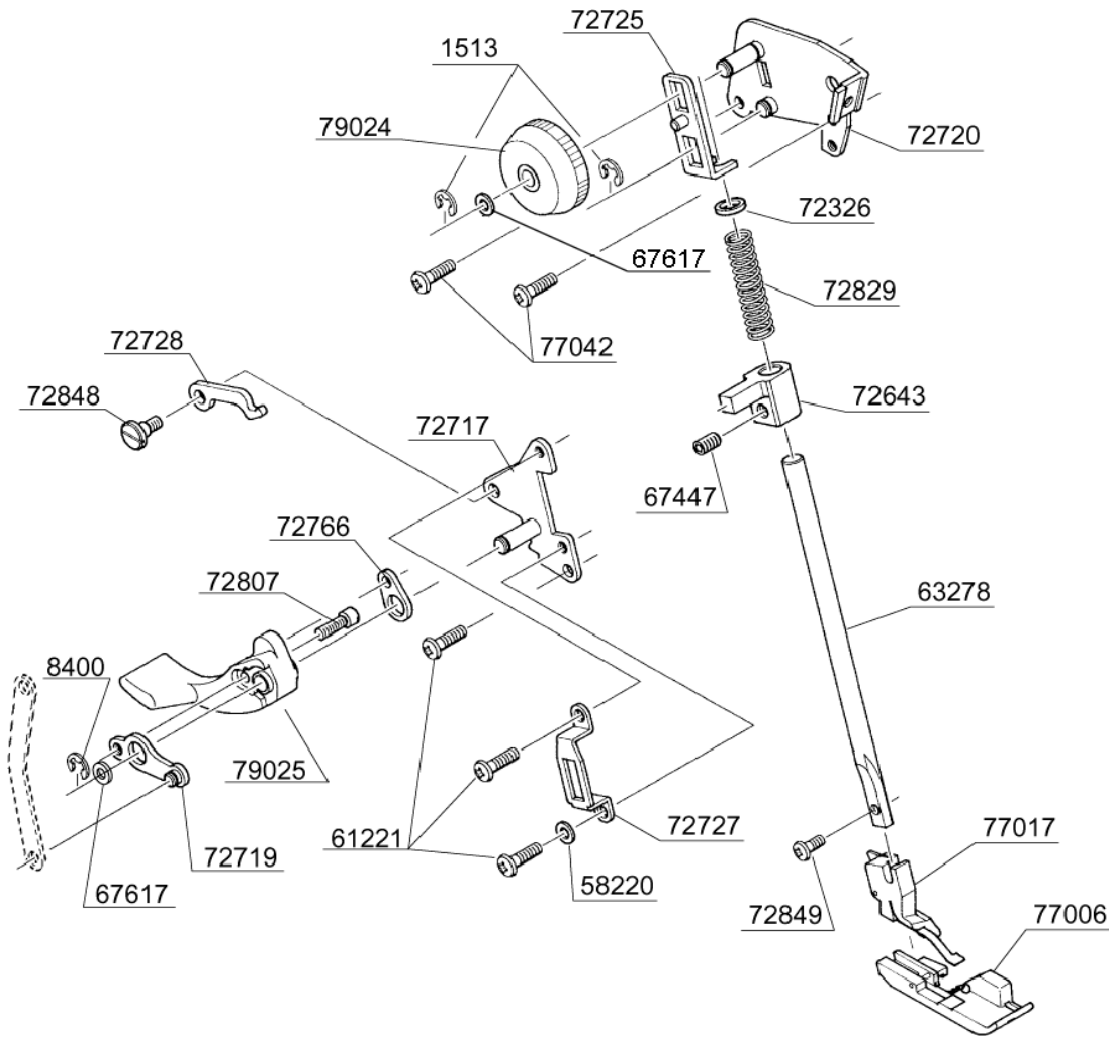
PART NO.	DESCRIPTION
1	8400 E5 CLIP-ON-WASHER
2	32316 WASHER
3	50976 FEED REGULATING BLOCK SET
4	64179 SPRING PIN
5	66620 COLLAR
6	66725 M4 SCREW
7	67447 M5 SCREW
8	72271 BALL JOINT
9	72341 THRUST WASHER
10	72379 ECCENTRIC CAM
11	72603 FEED ARM
12	72624 FEED BASE
13	72625 D.F. FEED BASE
14	72626 FEED REGULATING ARM
15	72632 FEED REGULATING BLOCK
16	72633 SLIDE BLOCK
17	72781 SHAFT
18	72792 PIN
19	72798 PIN
20	72802 SHAFT
21	72803 SHAFT
22	72813 M3.5 SCREW
23	72825 TORSION SPRING
24	77015 REAR FEED DOG
25	77016 FRONT FEED DOG
26	77042 M4 PHILLIPS SCREW
27	77084 SLIDE BLOCK
28	81488 COLLAR SET
29	
30	
31	
32	
33	
34	
35	
36	
37	
38	
39	
40	
41	
42	
43	
44	
45	
46	
47	
48	
49	
50	

BUYER'S MODEL NO.	14J250	SECTION	PAGE	REVISION	REMARKS
BUYER'S MODEL NAME		-	3		
FACTORY MODEL	CA08762				
ORIGINAL ISSUE	MAY 2010	SERIAL NO.			



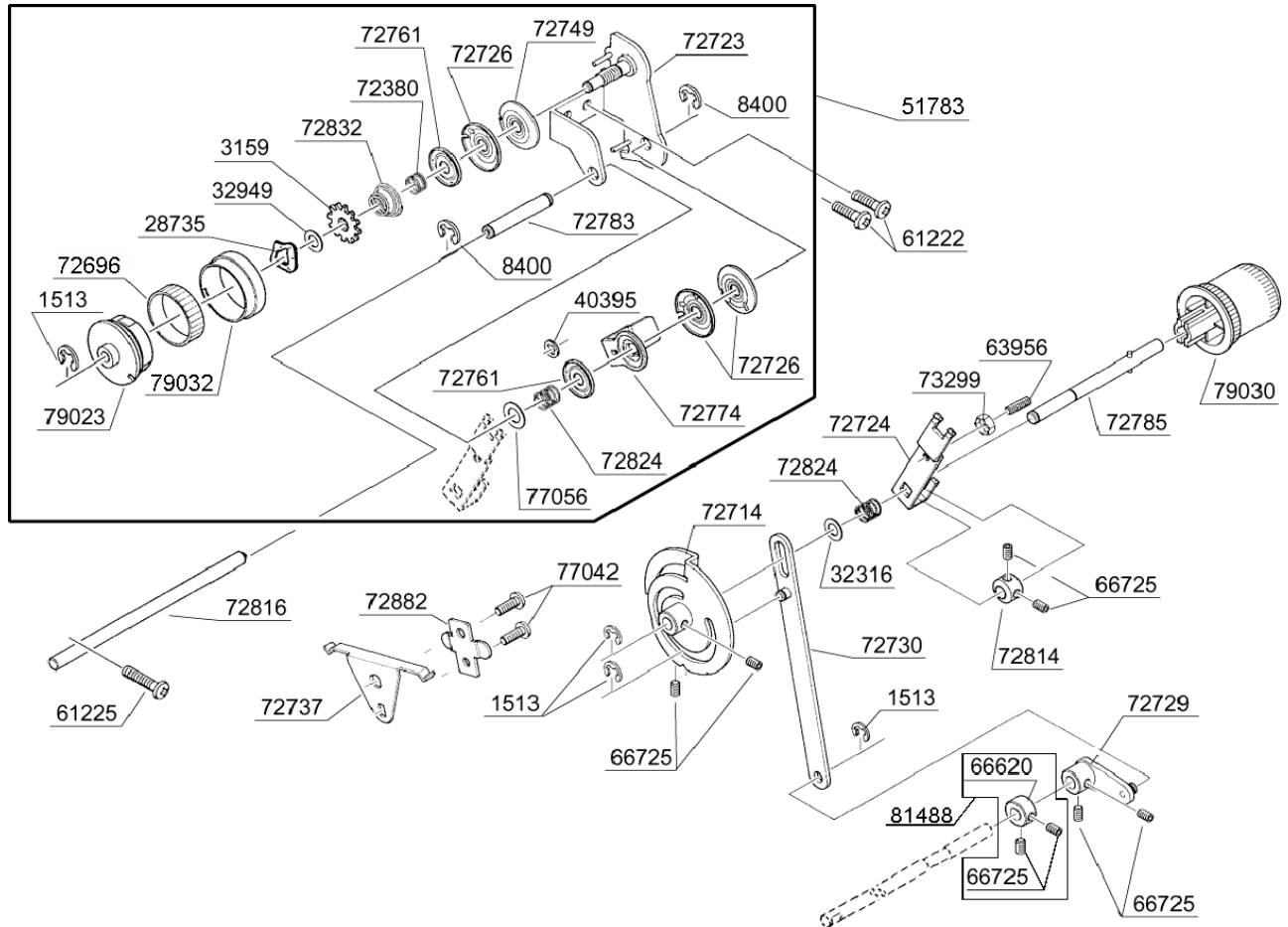
PART NO.	DESCRIPTION
1	1513 E4 CLIP-ON-WASHER
2	2206 WASHER
3	24133 PIPE KNOCK PIN
4	37910 CLIP-ON-WASHER
5	43390 THRUST WASHER
6	43858 WASHER
7	44010 BUSH
8	44044 STUD
9	61221 M4 PHILLIPS SCREW
10	61532 BUSH
11	64359 M4 SCREW
12	66437 BUSH
13	66474 M5 SCREW
14	66725 M4 SCREW
15	67440 CRANK-ROD ARM
16	67444 COLLAR
17	67447 M5 SCREW
18	67455 HOLDER
19	67847 #7 SCREW
20	72270 NEEDLE CLAMP
21	72274 M3 SCREW
22	72276 BUSH
23	72287 NEEDLE BAR CRANK
24	72337 THREAD GUIDE
25	72596 NEEDLE
26	72612 MAIN SHAFT ARM LEVER
27	72750 THREAD GUIDE
28	72751 OSCILLATING LEVER
29	72752 CONNECTING ARM
30	72776 THREAD GUIDE
31	72777 NEEDLE BAR
32	72779 UPPER SHAFT
33	72796 PIN
34	72797 CENTER PIN
35	72855 THREADER POSITIONER
36	77035 M4 PHILLIPS SCREW
37	81486 COLLAR SET
38	
39	
40	
41	
42	
43	
44	
45	
46	
47	
48	
49	
50	

BUYER'S MODEL NO.	14J250	SECTION	PAGE	REVISION	REMARKS	PART NO.	DESCRIPTION
BUYER'S MODEL NAME		-	4			1	1513 E4 CLIP-ON-WASHER
FACTORY MODEL	CA08762					2	8400 E5 CLIP-ON-WASHER
ORIGINAL ISSUE	MAY 2010	SERIAL NO.				3	58220 WASHER



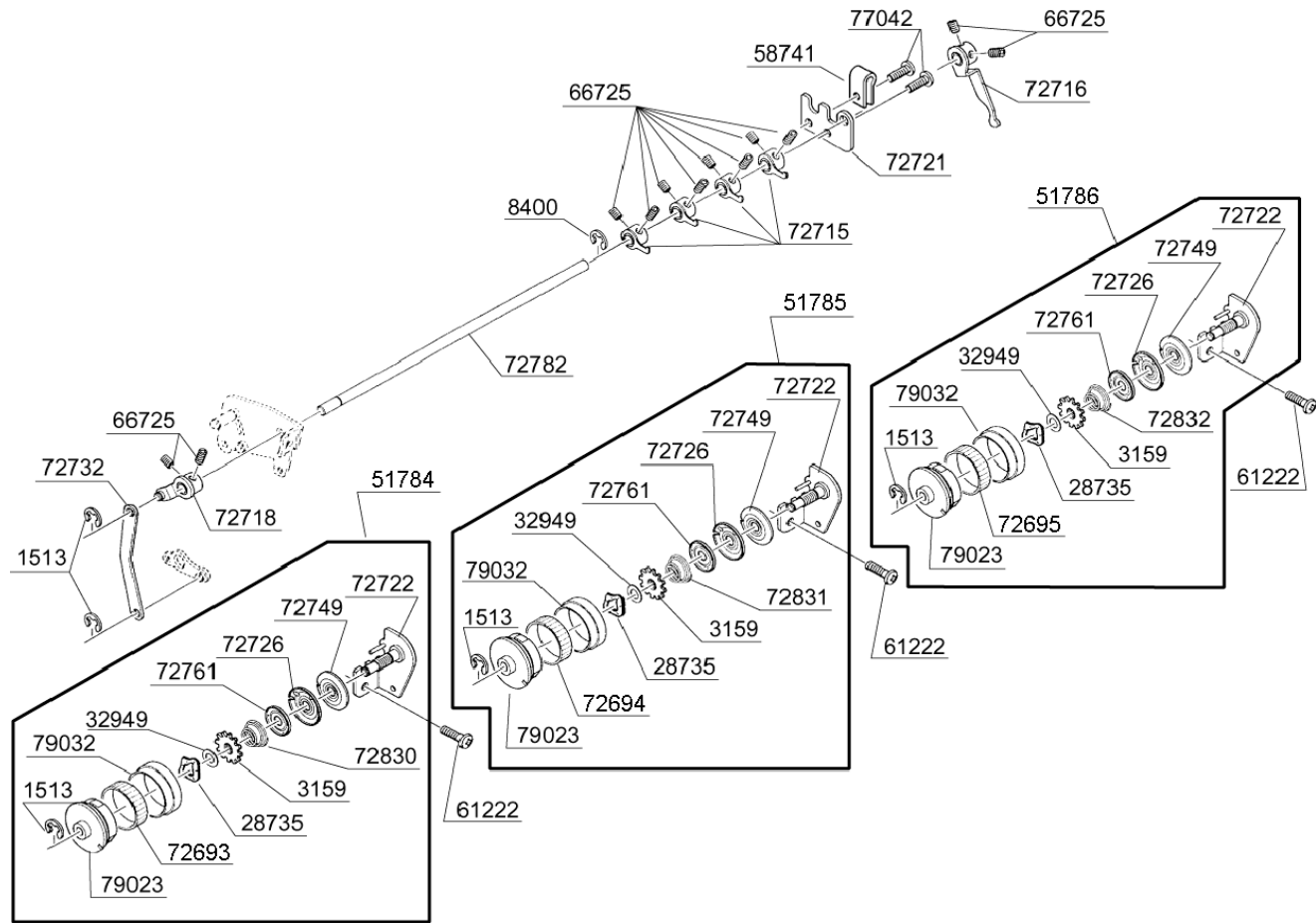
1	1513	E4 CLIP-ON-WASHER
2	8400	E5 CLIP-ON-WASHER
3	58220	WASHER
4	61221	M4 PHILLIPS SCREW
5	63278	PRESSER BAR
6	67447	M5 SCREW
7	67617	WASHER
8	72326	WASHER
9	72643	PRESSER BAR GUIDE BLOCK
10	72717	BRACKET
11	72719	TENSION RELEASE ARM
12	72720	BRACKET
13	72725	GUIDE PLATE
14	72727	GUIDE PLATE
15	72728	TENSION RELEASE LEVER
16	72766	LIFTER
17	72807	M4 STUD SCREW
18	72829	COMPRESSION SPRING
19	72848	#4 STUD SCREW
20	72849	#7 PHILLIPS SCREW
21	77006	PRESSER FOOT
22	77017	PRESSER FOOT HOLDER
23	77042	M4 PHILLIPS SCREW
24	79024	PRESSER CONTROL KNOB
25	79025	PRESSER FOOT LIFTER
26		
27		
28		
29		
30		
31		
32		
33		
34		
35		
36		
37		
38		
39		
40		
41		
42		
43		
44		
45		
46		
47		
48		
49		
50		

BUYER'S MODEL NO.	14J250	SECTION	PAGE	REVISION	REMARKS	PART NO.	DESCRIPTION
BUYER'S MODEL NAME		-	5			1	1513 E4 CLIP-ON-WASHER
FACTORY MODEL	CA08762					2	3159 TOOTHED WASHER
ORIGINAL ISSUE	MAY 2010	SERIAL NO.				3	8400 E5 CLIP-ON-WASHER



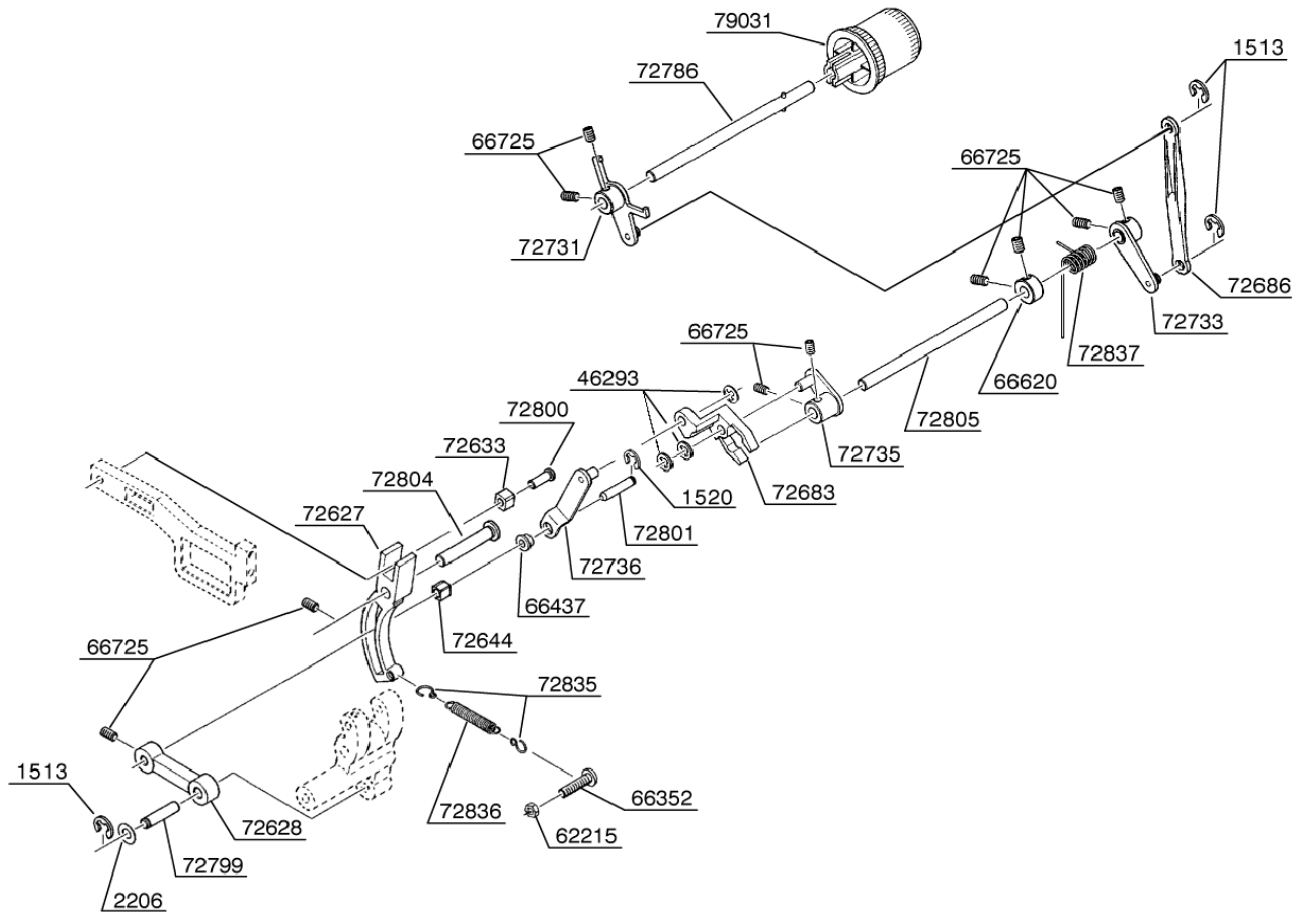
4	28735	CRINKLE WASHER
5	32316	WASHER
6	32949	WASHER
7	40395	CLIP-ON-WASHER
8	51783	TENSION DIAL SET (LOWER LOOPER)
9	61222	M4 PHILLIPS SCREW
10	61225	M4 PHILLIPS SCREW
11	63956	M4 SCREW
12	66620	COLLAR
13	66725	M4 SCREW
14	72380	COMPRESSION SPRING
15	72696	RUBBER BAND
16	72714	STITCH LENGTH CONTROL CAM
17	72723	BRACKET
18	72724	TENSION CONTROL PLATE
19	72726	TENSION DISC (B)
20	72729	STITCH LENGTH CONTROL ARM
21	72730	CONNECTING PLATE
22	72737	LEAF SPRING
23	72749	TENSION DISC (A)
24	72761	PRESSER DISC
25	72774	PRESSER PLATE
26	72783	SHAFT
27	72785	SHAFT
28	72814	COLLAR
29	72816	SHAFT
30	72824	COMPRESSION SPRING
31	72832	COMPRESSION SPRING
32	72882	STOPPER
33	73299	M4 TORQUE NUT
34	77042	M4 PHILLIPS SCREW
35	77056	WASHER
36	79023	THREAD TENSION DIAL
37	79030	STITCH LENGTH CONTROL DIAL
38	79032	THREAD TENSION RING
39	81488	COLLAR SET
40		
41		
42		
43		
44		
45		
46		
47		
48		
49		
50		

BUYER'S MODEL NO.	14J250	SECTION	PAGE	REVISION	REMARKS
BUYER'S MODEL NAME		-	6		
FACTORY MODEL	CA08762				
ORIGINAL ISSUE	MAY 2010	SERIAL NO.			



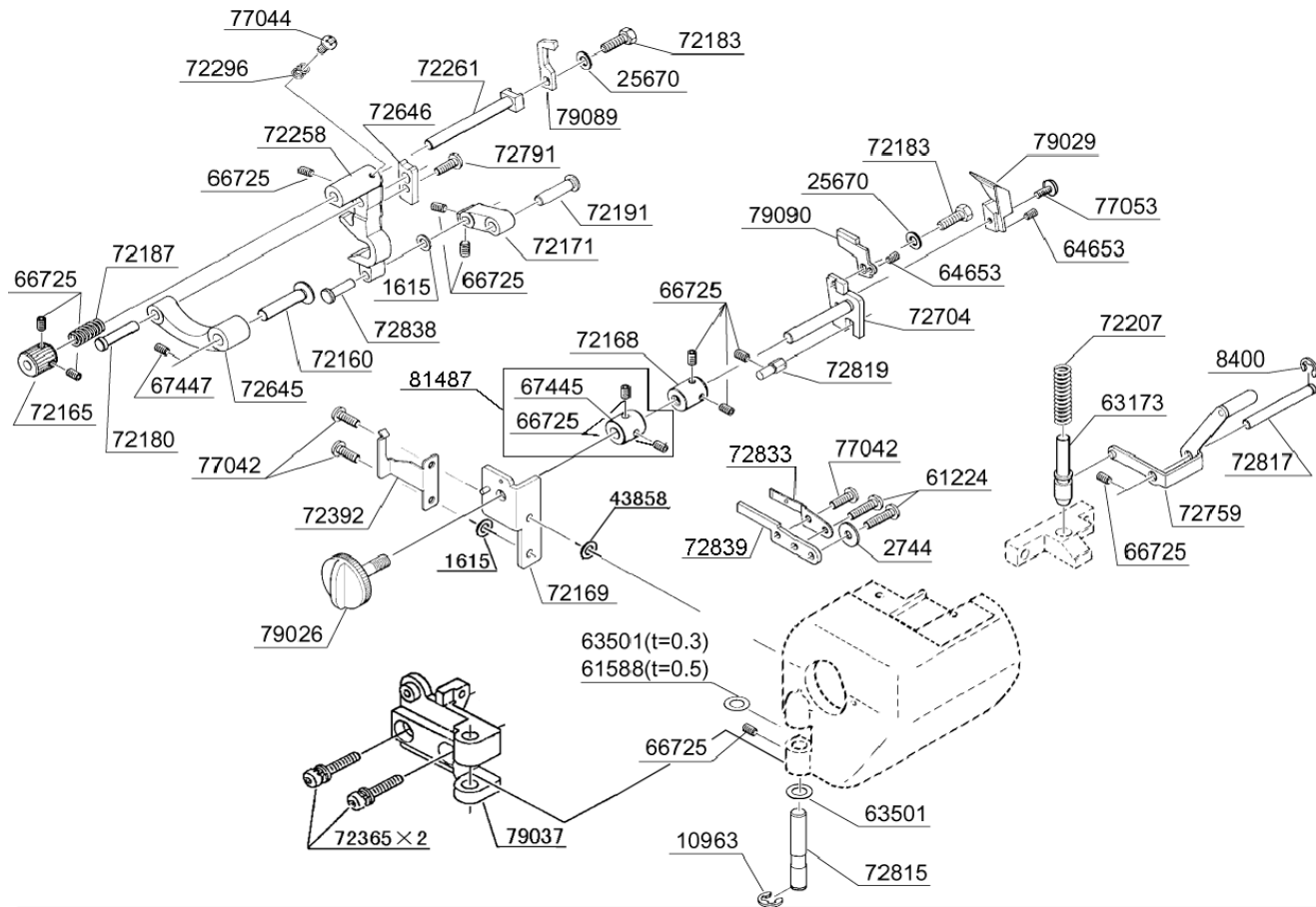
PART NO.	DESCRIPTION
1	1513 E4 CLIP-ON-WASHER
2	3159 TOOTHED WASHER
3	8400 E5 CLIP-ON-WASHER
4	28735 CRINKLE WASHER
5	32949 WASHER
6	51784 TENSION DIAL SET (LEFT NEEDLE)
7	51785 TENSION DIAL SET (RIGHT NEEDLE)
8	51786 TENSION DIAL SET (UPPER LOOPER)
9	58741 CORD GUARD
10	61222 M4 PHILLIPS SCREW
11	66725 M4 SCREW
12	72693 RUBBER BAND
13	72694 RUBBER BAND
14	72695 RUBBER BAND
15	72715 TENSION RELEASE PLATE (A)
16	72716 TENSION RELEASE PLATE (B)
17	72718 TENSION RELEASE ARM
18	72721 TENSION RELEASE GUIDE
19	72722 BRACKET
20	72726 TENSION DISC (B)
21	72732 TENSION RELEASE LINK
22	72749 TENSION DISC (A)
23	72761 PRESSER DISC
24	72782 SHAFT
25	72830 COMPRESSION SPRING
26	72831 COMPRESSION SPRING
27	72832 COMPRESSION SPRING
28	77042 M4 PHILLIPS SCREW
29	79023 THREAD TENSION DIAL
30	79032 THREAD TENSION RING
31	
32	
33	
34	
35	
36	
37	
38	
39	
40	
41	
42	
43	
44	
45	
46	
47	
48	
49	
50	

BUYER'S MODEL NO.	14J250	SECTION	PAGE	REVISION	REMARKS	PART NO.	DESCRIPTION
BUYER'S MODEL NAME		-	7			1	1513 E4 CLIP-ON-WASHER
FACTORY MODEL	CA08762					2	1520 E3 CLIP-ON-WASHER
ORIGINAL ISSUE	MAY 2010	SERIAL NO.				3	2206 WASHER



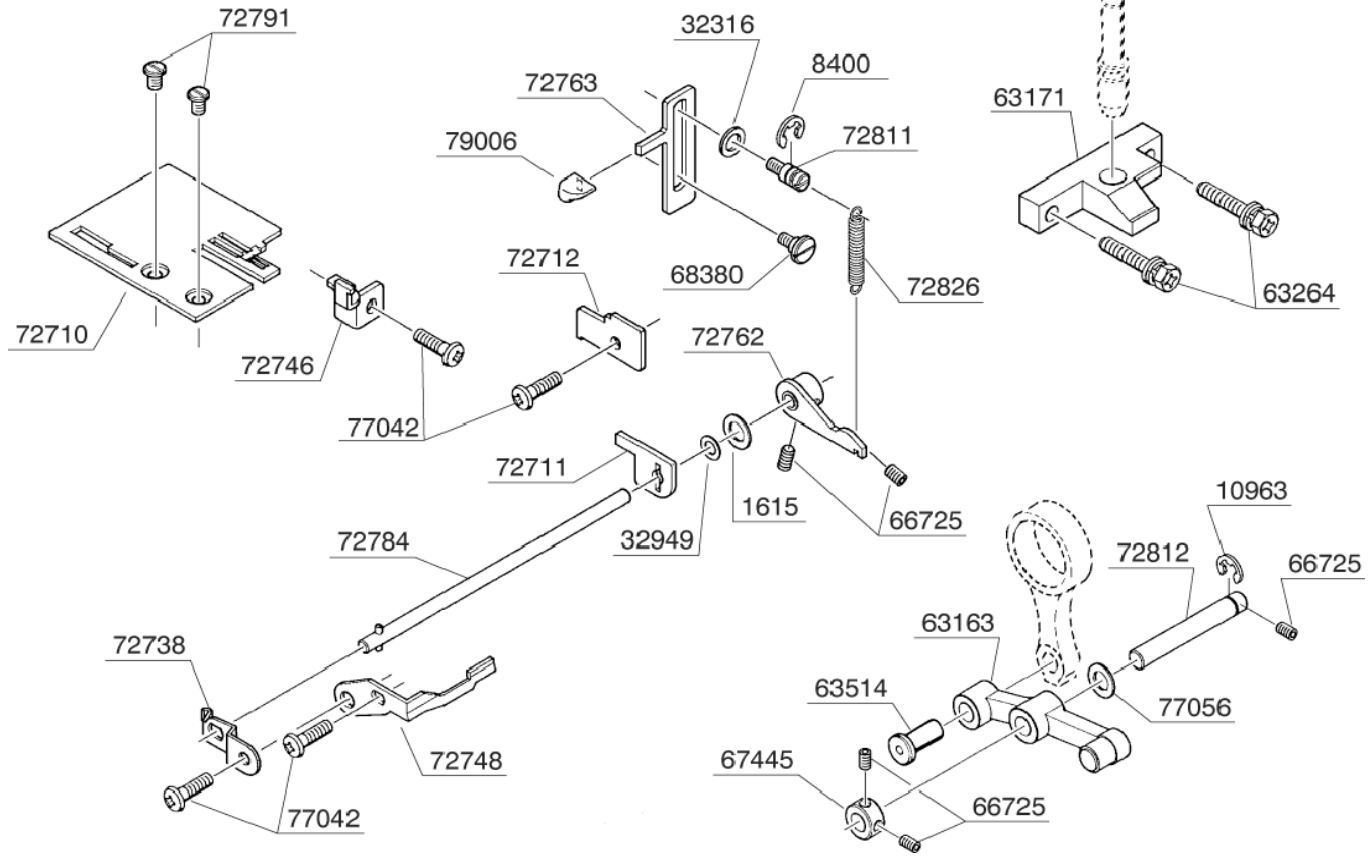
4	46293	CLIP-ON-WASHER
5	62215	M4 NUT
6	66352	M4 PHILLIPS SCREW
7	66437	BUSH
8	66620	COLLAR
9	66725	M4 SCREW
10	72627	D.F. LOCKING ARM
11	72628	D.F. LINK
12	72633	SLIDE BLOCK
13	72644	SLIDE BLOCK
14	72683	D.F. ARM
15	72686	CONNECTING ROD
16	72731	D.F. ARM (A)
17	72733	D.F. ARM (C)
18	72735	D.F. ARM (D)
19	72736	CONNECTING PLATE
20	72786	SHAFT
21	72799	PIN
22	72800	PIN
23	72801	SHAFT
24	72804	PIN
25	72805	SHAFT
26	72835	HOOK FOR SPRING
27	72836	EXTENSION SPRING
28	72837	TORSION SPRING
29	79031	D.F. DIAL
30		
31		
32		
33		
34		
35		
36		
37		
38		
39		
40		
41		
42		
43		
44		
45		
46		
47		
48		
49		
50		

BUYER'S MODEL NO.	14J250	SECTION	PAGE	REVISION	REMARKS	PART NO.	DESCRIPTION
BUYER'S MODEL NAME		-	8			1	1615 WASHER
FACTORY MODEL	CA08762					2	2744 WASHER
ORIGINAL ISSUE	MAY 2010	SERIAL NO.				3	8400 E5 CLIP-ON-WASHER



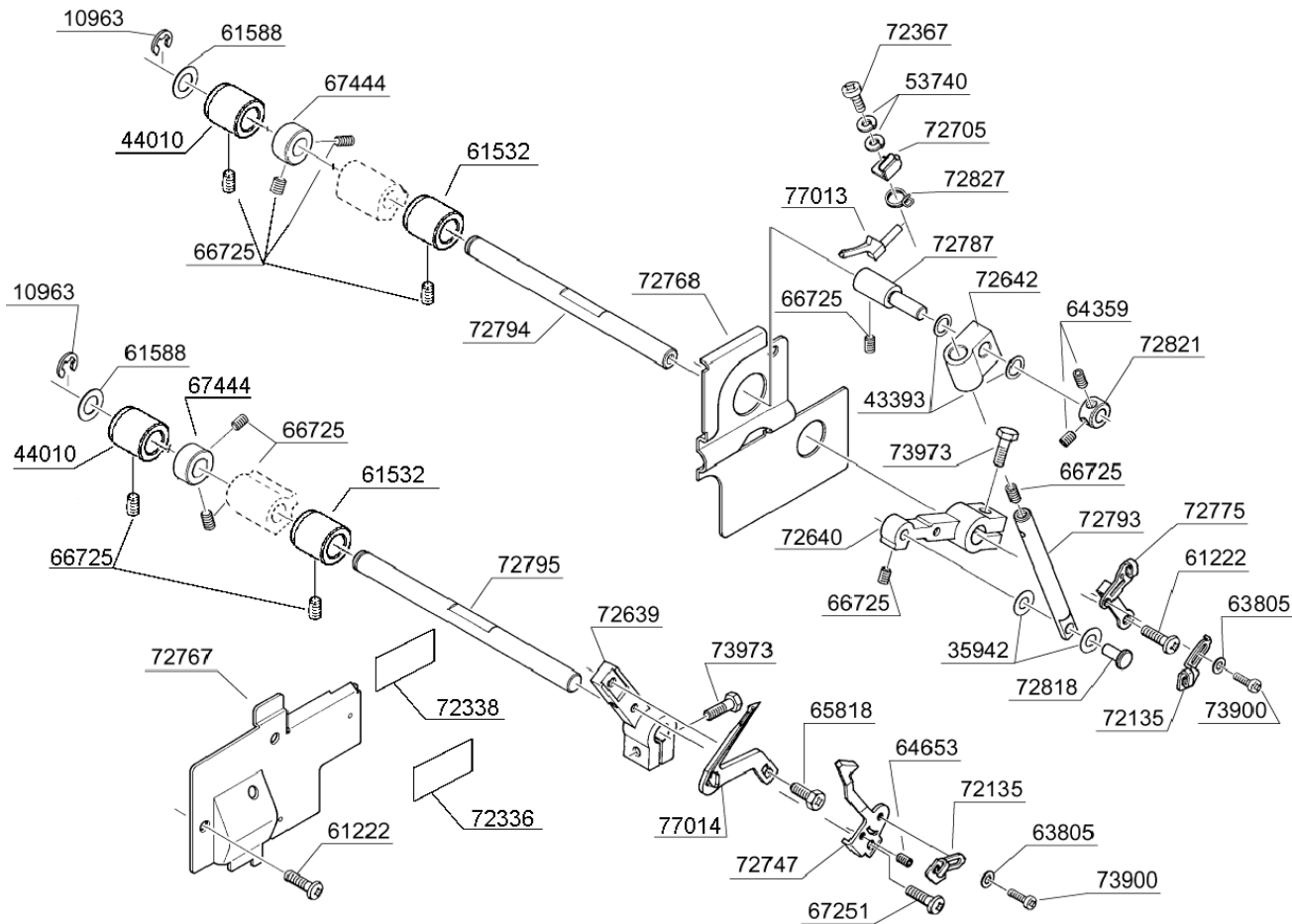
4	10963	E6 CLIP-ON-WASHER
5	25670	WASHER
6	43858	WASHER
7	61224	M4 PHILLIPS SCREW
8	61588	WASHER
9	63173	PIN
10	63501	WASHER
11	64653	M3 SCREW
12	66725	M4 SCREW
13	67445	COLLAR
14	67447	M5 SCREW
15	72160	STUD
16	72165	KNIFE RELEASE KNOB
17	72168	COLLAR
18	72169	KNOB MOUNTING BRACKET
19	72171	LINK (B)
20	72180	STUD
21	72183	M3.5 BOLT
22	72187	COMPRESSION SPRING
23	72191	STUD
24	72207	COMPRESSION SPRING
25	72258	DRIVING ARM
26	72261	SHAFT
27	72296	COMPRESSION SPRING
28	72365	M5 SCREW
29	72392	SPRING PLATE
30	72645	LINK
31	72646	POSITIONER
32	72704	LOWER KNIFE HOLDER
33	72759	LEVER
34	72791	M4 SCREW
35	72815	SHAFT
36	72817	SHAFT
37	72819	HEXAGONAL KNIFE
38	72833	LEAF SPRING
39	72838	STUD
40	72839	NEEDLE PLATE HOLDER
41	77042	M4 PHILLIPS SCREW
42	77044	M3 PHILLIPS SCREW
43	77053	M3 PHILLIPS SCREW
44	79026	CONTROL KNOB
45	79029	LOWER KNIFE COVER
46	79037	HINGE
47	79089	UPPER KNIFE
48	79090	LOWER KNIFE
49	81487	COLLAR SET
50		

BUYER'S MODEL NO.	14J250	SECTION	PAGE	REVISION	REMARKS	PART NO.	DESCRIPTION
BUYER'S MODEL NAME		-	9			1	1615 WASHER
FACTORY MODEL	CA08762					2	8400 E5 CLIP-ON-WASHER
ORIGINAL ISSUE	MAY 2010	SERIAL NO.				3	10963 E6 CLIP-ON-WASHER



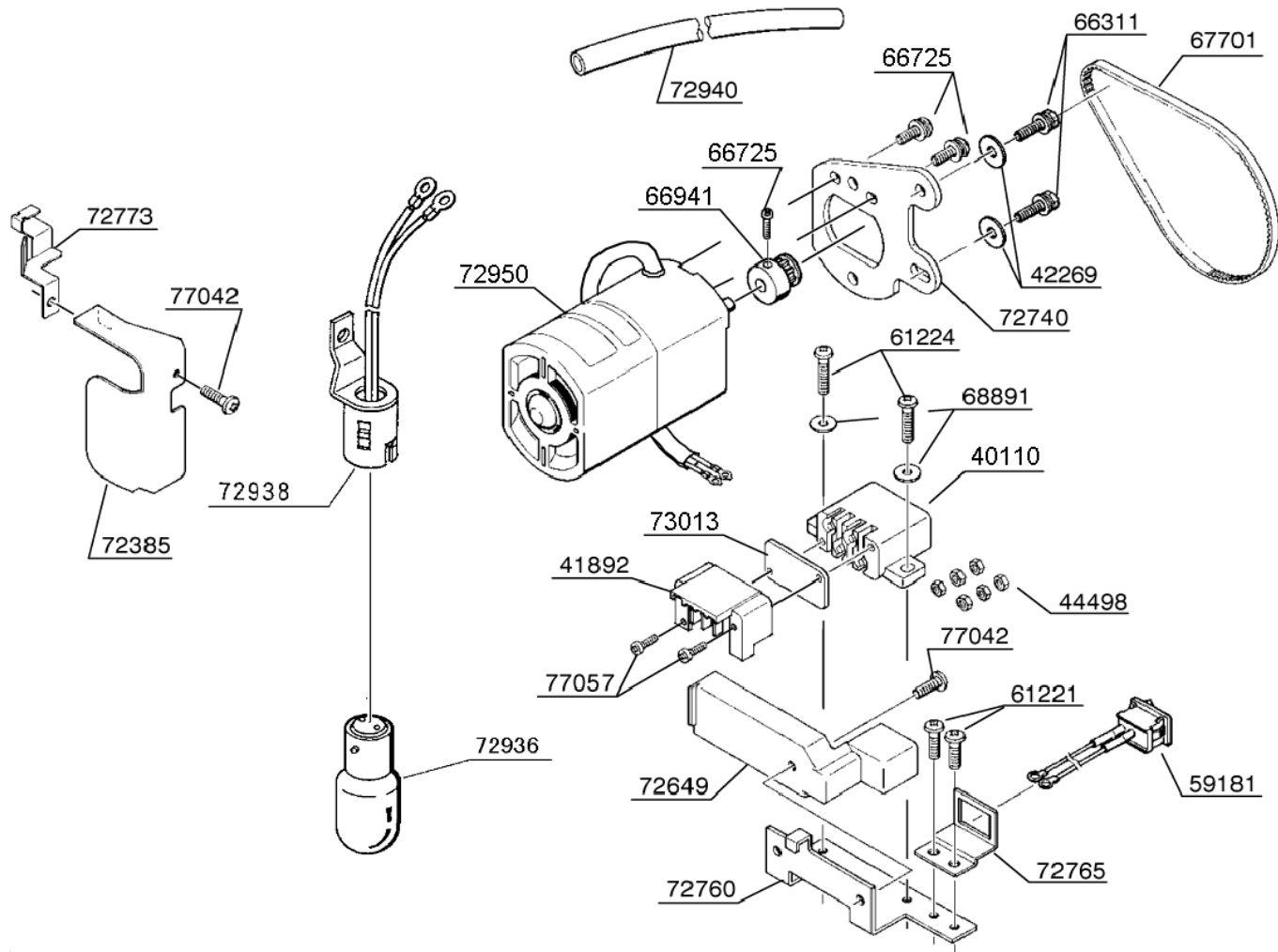
1	1615	WASHER
2	8400	E5 CLIP-ON-WASHER
3	10963	E6 CLIP-ON-WASHER
4	32316	WASHER
5	32949	WASHER
6	63163	KNIFE LEVER ASSEMBLY
7	63171	FIXING BASE
8	63264	M5 BOLT WITH WASHER
9	63514	STUD
10	66725	M4 SCREW
11	67445	COLLAR
12	68380	M4 STUD SCREW
13	72710	NEEDLE PLATE
14	72711	UPPER CUTTING BLADE
15	72712	LOWER CUTTING BLADE
16	72738	LEAF SPRING
17	72746	NEEDLE PLATE HOLDER
18	72748	NEEDLE RECEIVER (B)
19	72762	THREAD CUTTER ARM
20	72763	SLIDER
21	72784	M4 SCREW
22	72791	M4 SCREW
23	72811	M4 STUD SCREW
24	72812	SHAFT
25	72826	EXTENSION SPRING
26	77042	M4 PHILLIPS SCREW
27	77056	WASHER
28	79006	KNOB
29		
30		
31		
32		
33		
34		
35		
36		
37		
38		
39		
40		
41		
42		
43		
44		
45		
46		
47		
48		
49		
50		

BUYER'S MODEL NO.	14J250	SECTION	PAGE	REVISION	REMARKS	PART NO.	DESCRIPTION
BUYER'S MODEL NAME		-	10			1	10963 E6 CLIP-ON-WASHER
FACTORY MODEL	CA08762					2	35942 THRUST WASHER
ORIGINAL ISSUE	MAY 2010	SERIAL NO.				3	43393 WASHER



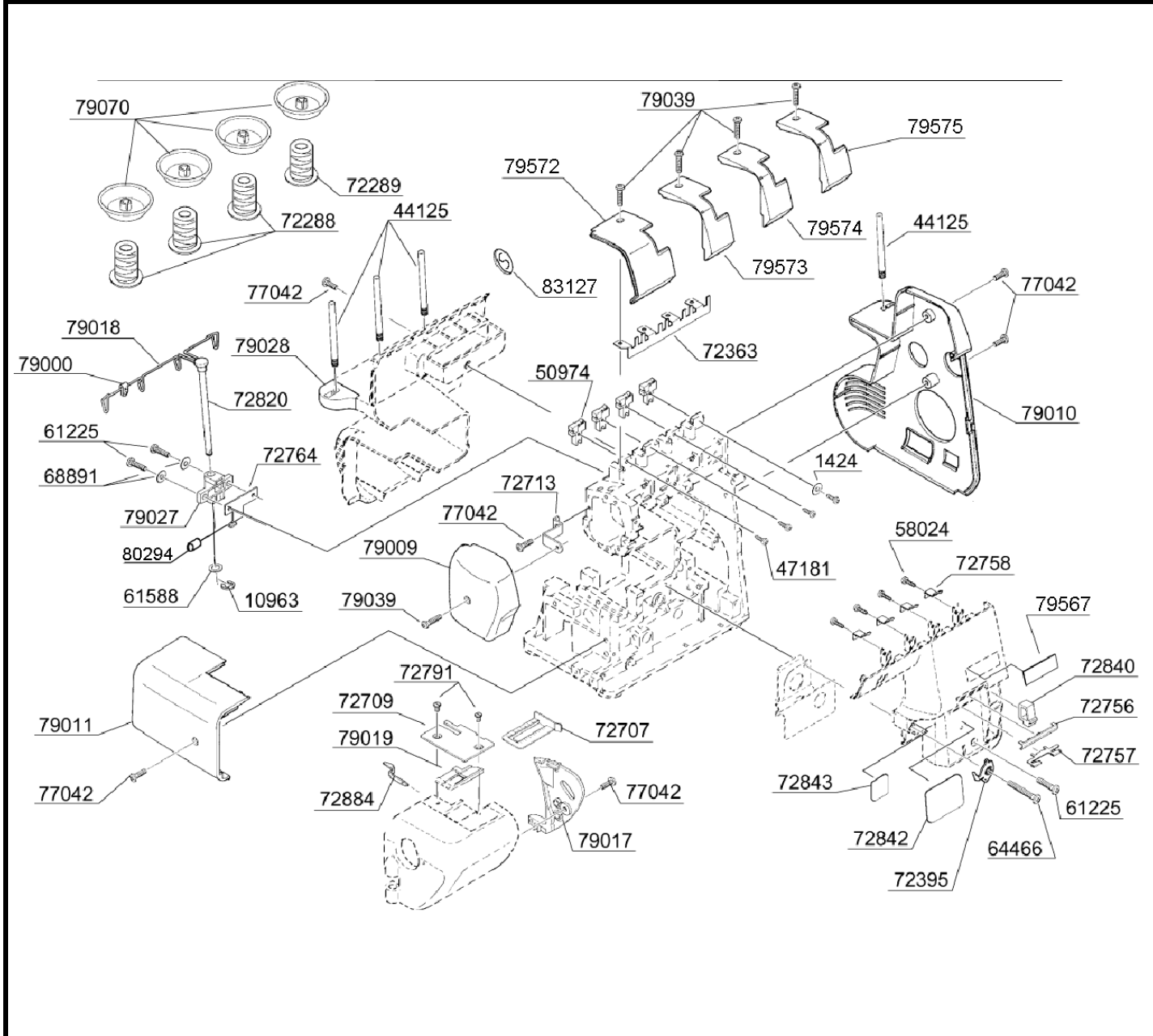
4	44010	BUSH
5	53740	SPRING PIN
6	61222	M4 PHILLIPS SCREW
7	61532	BUSH
8	61588	WASHER
9	63805	WASHER
10	64359	M4 SCREW
11	64653	M3 SCREW
12	65818	M4 BOLT
13	66725	M4 SCREW
14	67251	M3.5 PHILLIPS SCREW
15	67444	COLLAR
16	72135	THREAD GUIDE (B)
17	72336	SEAL
18	72338	SEAL
19	72367	M4 BOLT
20	72639	LOOPER BASE
21	72640	UPPER LOOPER SUPPORTING ARM
22	72642	PIVOT
23	72705	SUPPORT PLATE
24	72747	NEEDLE RECEIVER (A)
25	72767	BED COVER
26	72768	LOOPER COVER
27	72775	THREAD GUIDE (A)
28	72787	PIN
29	72793	LOOPER SLIDE SHAFT
30	72794	SHAFT
31	72795	SHAFT
32	72818	PIN
33	72821	COLLAR
34	72827	THREAD GUIDE
35	73900	M3 PHILLIPS SCREW
36	73973	M4 BOLT
37	77013	UPPER LOOPER
38	77014	LOWER LOOPER
39		
40		
41		
42		
43		
44		
45		
46		
47		
48		
49		
50		

BUYER'S MODEL NO.	14J250	SECTION	PAGE	REVISION	REMARKS	PART NO.	DESCRIPTION
BUYER'S MODEL NAME		-	11			1	40110 TERMINAL BLOCK
FACTORY MODEL	CA08762					2	41892 TERMINAL BLOCK COVER
ORIGINAL ISSUE	MAY ,2010	SERIAL NO.				3	42269 WASHER



4	44498	M3 NUT
5	59181	SWITCH ASSEMBLY
6	61221	M4 PHILLIPS SCREW
7	61224	M4 PHILLIPS SCREW
8	66311	M5 BOLT WITH WASHER
9	66725	SCREW
10	66941	MOTOR PULLEY
11	67701	TIMING BELT
12	68891	WASHER
13	72385	REFLECTING PLATE
14	72649	TERMINAL CASE
15	72740	MOTOR BRACKET
16	72760	TERMINAL BRACKET
17	72765	SWITCH BRACKET
18	72773	CORD GUIDE
19	72936	LIGHT BULB
20	72938	LAMP HARNESS
21	72940	VINYL TUBE
22	72950	MOTOR
23	73013	TERMINAL BLOCK COVER
24	77042	M4 PHILLIPS SCREW
25	77057	M3 PHILLIPS SCREW
26		
27		
28		
29		
30		
31		
32		
33		
34		
35		
36		
37		
38		
39		
40		
41		
42		
43		
44		
45		
46		
47		
48		
49		
50		

BUYER'S MODEL NO.	14J250	SECTION	PAGE	REVISION	REMARKS	PART NO.	DESCRIPTION
BUYER'S MODEL NAME		-	12			1	1424 WASHER
FACTORY MODEL	CA08762					2	10963 E6 CLIP-ON-WASHER
ORIGINAL ISSUE	MAY 2010	SERIAL NO.				3	44125 SPOOL PIN



4	47181	TAPPING SCREW
5	50974	THREAD GUIDE
6	58024	TAPPING SCREW
7	61225	M4 PHILLIPS SCREW
8	61588	WASHER
9	64466	M4 PHILLIPS SCREW
10	68891	WASHER
11	72288	THREAD
12	72289	THREAD
13	72363	CORD GUARD
14	72395	THREAD GUIDE
15	72707	CLOTH GUIDE
16	72709	COVER PLATE
17	72713	BRACKET
18	72756	THREAD GUIDE PLATE
19	72757	THREAD GUIDE (A)
20	72758	THREAD GUIDE (B)
21	72764	LEAF SPRING
22	72791	M4 SCREW
23	72820	EXTENSION BAR
24	72840	SPONGE
25	72842	THREADING SHEET
26	72843	SEAL
27	72884	DETACHABLE INSERT PLATE
28	77042	M4 PHILLIPS SCREW
29	79000	DETACHABLE CORD GUIDE
30	79009	FACE COVER
31	79010	SIDE COVER
32	79011	BED COVER
33	79017	BRACKET
34	79018	SHUTTER
35	79019	GUIDE PLATE
36	79027	HOLDER
37	79028	SPOOL STAND
38	79039	#4 PHILLIPS SCREW
39	79070	SPOOL PIN
40	79567	NAME PLATE
41	79572	TOP COVER
42	79573	TOP COVER
43	79574	TOP COVER
44	79575	TOP COVER
45	80294	TUBE
46	83127	SEAL
47		
48		
49		
50		

BUYER'S MODEL NO.	14J250	SECTION		PAGE	13	REVISION		REMARKS		PART NO.	DESCRIPTION
BUYER'S MODEL NAME										1	1520 E3 CLIP-ON-WASHER
FACTORY MODEL	CA08762									2	39160 TAPPING SCREW
ORIGINAL ISSUE	MAY 2010	SERIAL NO.								3	61224 M4 PHILLIPS SCREW
<p>The diagram shows an exploded view of a front cover assembly. Key components include: <ul style="list-style-type: none"> 62016: Screws for the inner attachment case. 79015: Inner attachment case. 72841: Sponge holder. 72662: Base. 72598: Rubber cushion. 68891: Washers. 61224: M4 Phillips screws. 77042: M4 Phillips screws for the shaft. 72753: Hinged bracket (A). 72754: Hinged bracket (B). 72808: Shaft. 72681: Compression spring. 1520: E3 clip-on-washer. 79569: Front cover. </p>										4	62016 TAPPING SCREW
										5	68891 WASHER
										6	72598 RUBBER CUSHION
										7	72662 BASE
										8	72681 COMPRESSION SPRING
										9	72753 HINGED BRACKET(A)
										10	72754 HINGED BRACKET(B)
										11	72808 SHAFT
										12	72841 SPONGE HOLDER
										13	77042 M4 PHILLIPS SCREW
										14	79015 INNER ATTACHMENT CASE
										15	79569 FRONT COVER
										16	
										17	
										18	
19											
20											
21											
22											
23											
24											
25											
26											
27											
28											
29											
30											
31											
32											
33											
34											
35											
36											
37											
38											
39											
40											
41											
42											
43											
44											
45											
46											
47											
48											
49											
50											

BUYER'S MODEL NO.	14J250	SECTION	PAGE	REVISION	REMARKS	PART NO.	DESCRIPTION
BUYER'S MODEL NAME		-	14			1	44295 SPANNER
FACTORY MODEL	CA08762					2	45773 CUSHION HOLDER
ORIGINAL ISSUE	MAY ,2010	SERIAL NO.				3	50883 BLIND FOOT(1.0) SET
						4	50885 GATHERING FOOT SET
						5	50886 ELASTICATOR FOOT SET
						6	51787 ACCESSORY SET
						7	59455 EXTENSION PLATE
						8	63398 SEWING MACHINE OIL
						9	63523 NET
						10	65650 CLEANING BRUSH
						11	65811 LARGE SCREW DRIVER
						12	72391 DETACHABLE INSERT PLATE
						13	72597 NEEDLE SET
						14	72599 TWEEZERS
						15	72706 TWO-THREAD CONVERTOR
						16	72850 AUTOMATIC NEEDLE THREADER
						17	72917 FOOT CONTROL
						18	74793 SMALL SCREW DRIVER
						19	79020 CAP
						20	79089 UPPER KNIFE
						21	79559 DUST COVER
						22	80120 ACCESSORY VINYL BAG
						23	82338 INSTRUCTION BOOK
						24	
						25	
						26	
27							
28							
29							
30							
31							
32							
33							
34							
35							
36							
37							
38							
39							
40							
41							
42							
43							
44							
45							
46							
47							
48							
49							
50							