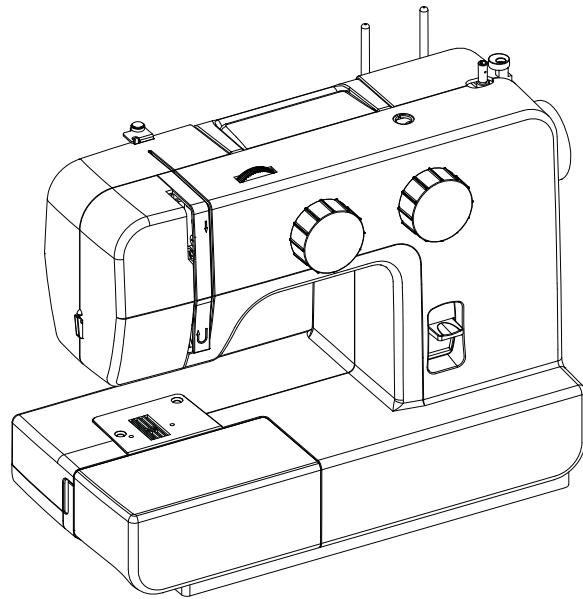




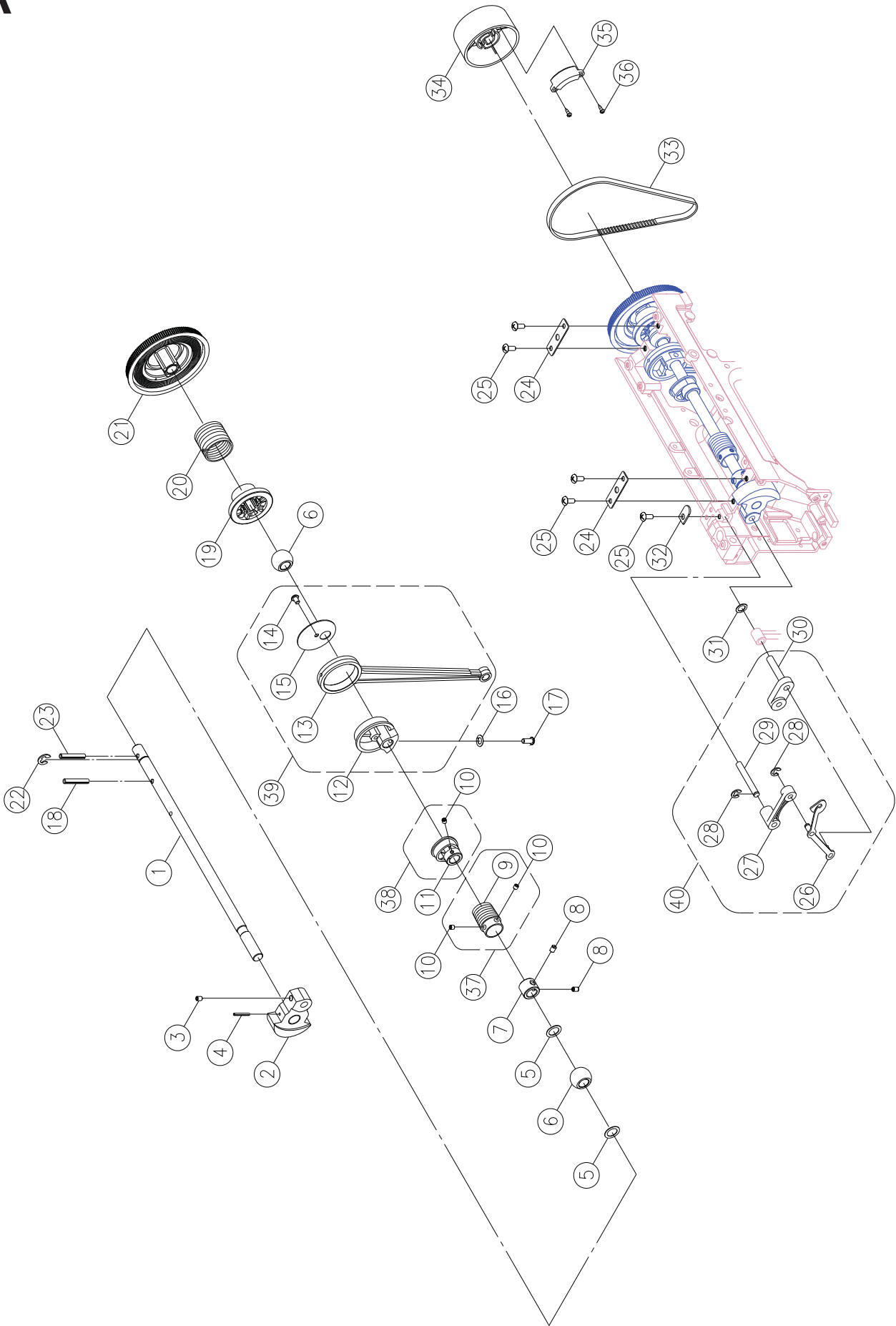
SINGER®

1408, 1409



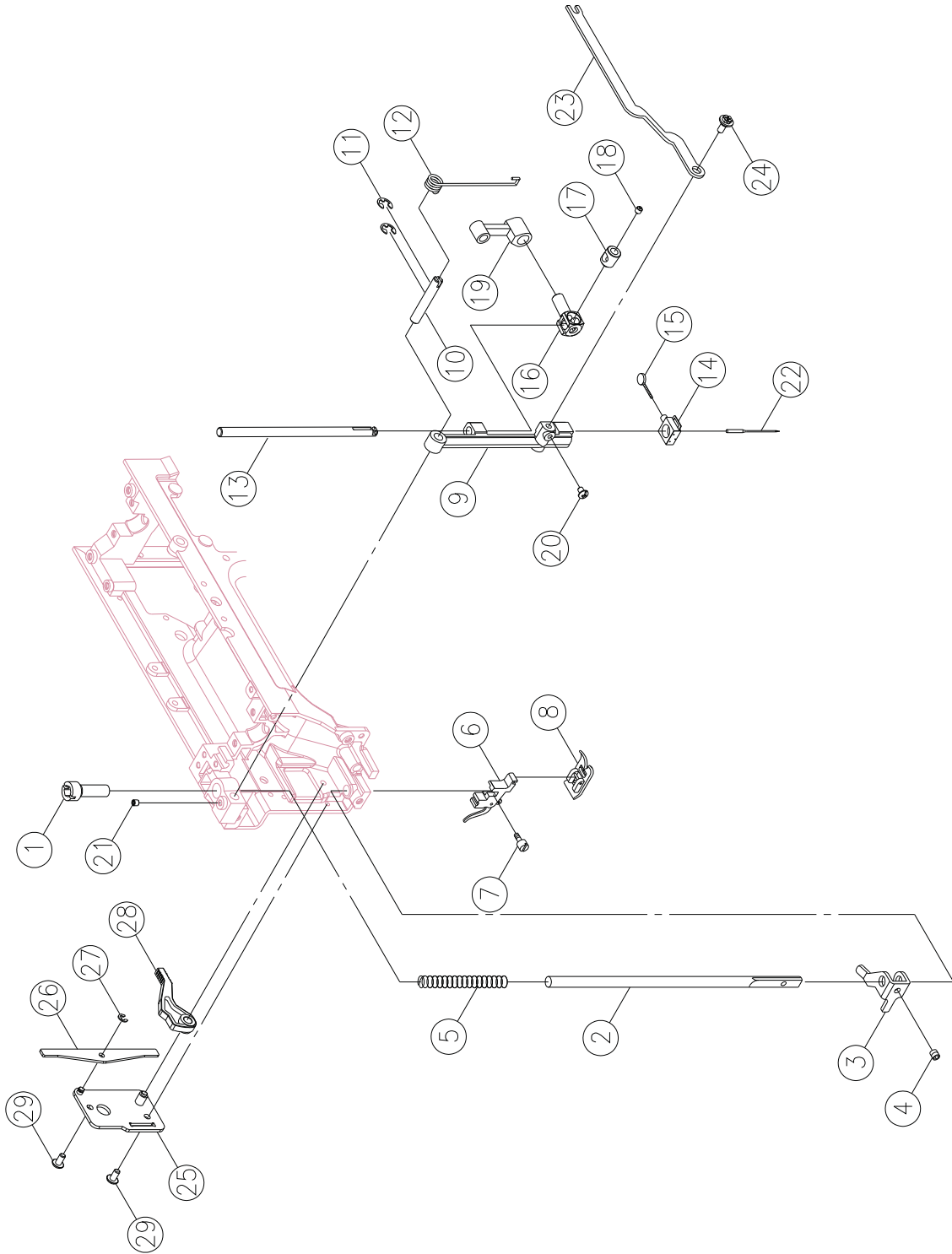
Liste de pièces
Lista de Piezas
Parts List

A

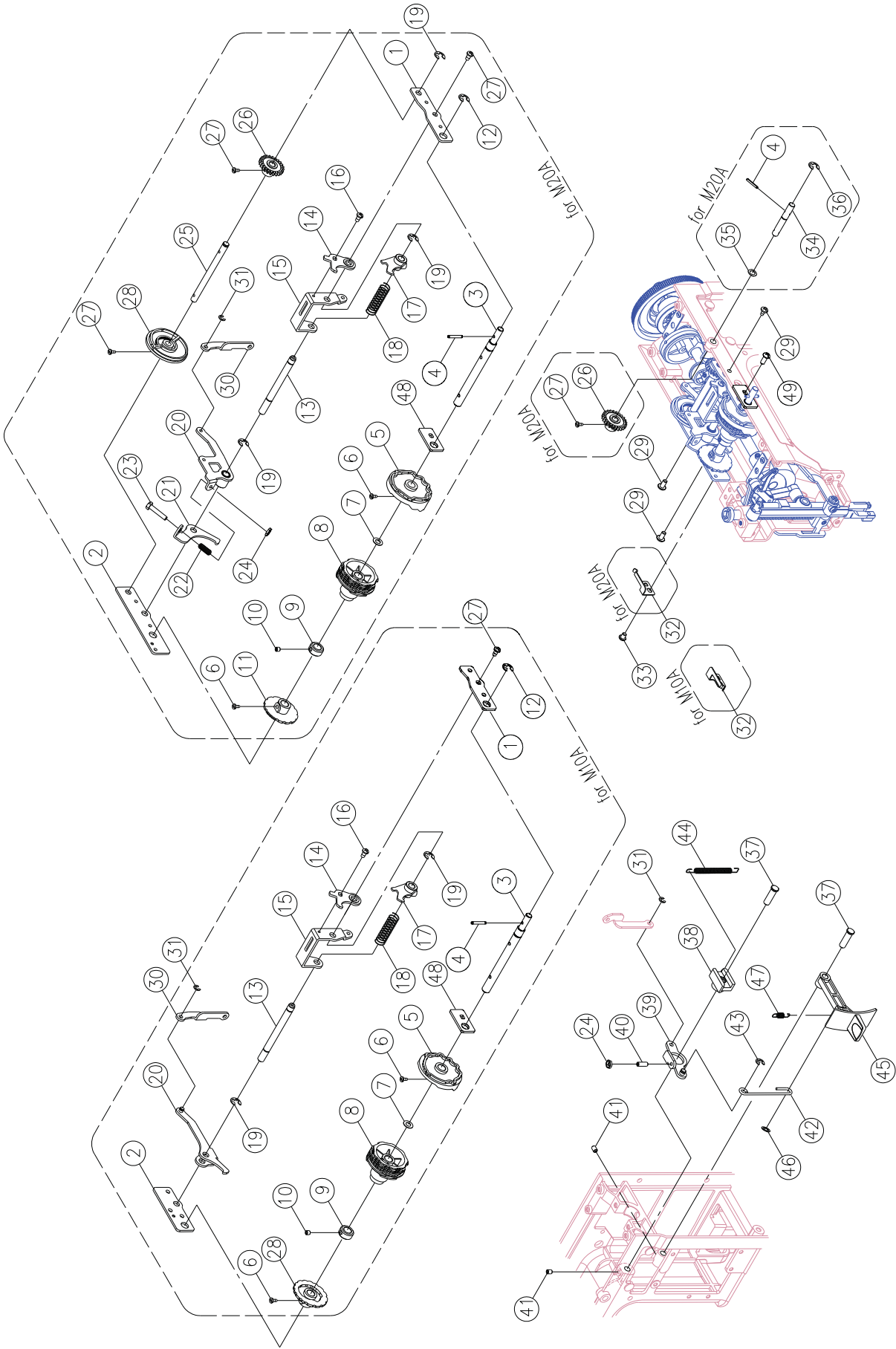


No.	Part No.	Description
1	416516101	Arm shaft
2	270 V61473000	Arm shaft balance
3	270 004240223	Set screw(M4×6 C)
4	270 003043524	Arm shaft balance pin (□3.5×24)
5	270 004400080	Endure attrition washer (10.2×15×0.5)
6	270 R10293000	Arm shaft busing
7	416515101	Arm shaft collar
8	416121001	Set screw(M4×5 C)
9	416515201	Arm shaft worm
10	416122401	Set screw(M4×4 C)
11	270 G4A0533000	Feed cam
12	270 V60053000	Crank connecting rod cam
13	416161301	Crank connecting rod
14	416121201	Set screw (M4×6 B)
15	270 G4A0514000	Crank connecting rod cover
16	270 004600026	Washer(4.2×7.2×1.2)
17	416118601	Set screw(11/64×40×12)
18	270 003043028	Spring pin(□3×28)
19	416307201	Arm shaft collar
20	270 D5A0573003	Arm shaft clutch annulus spring
21	416515301	Arm shaft driver belt pulley
22	270 003010083	E-Ring(ETW-8)
23	270 003043030	Spring pin(□3×30)
24	270 V60113003	Arm shaft bushing holder plate
25	416121501	Set screw(M4×8 A)
26	270 E1A2513001	Thread take up lever
27	416157901	Thread take up lever supporter
28	416116101	E-Ring (ETW-4)
29	270 V60223003	Thread take up lever supporter shaft
30	416158001	Arm shaft balance pin
31	270 0044000020	Endure attrition washer (6.2×12×0.25)
32	416152201	Set washer
33	416515401	Motor drive belt (250×500×5)
34	416515501	Hand wheel
35	270 V61893000	Hand wheel balance lump
36	270 004230216	Set screw (M3×8.5)
37	416515601	Arm shaft worm complete
38	270 G4A0535000	Feed cam complete
39	416161101	Crank connecting rod complete
40	270 E1A2534000	Thread take up lever complete

B

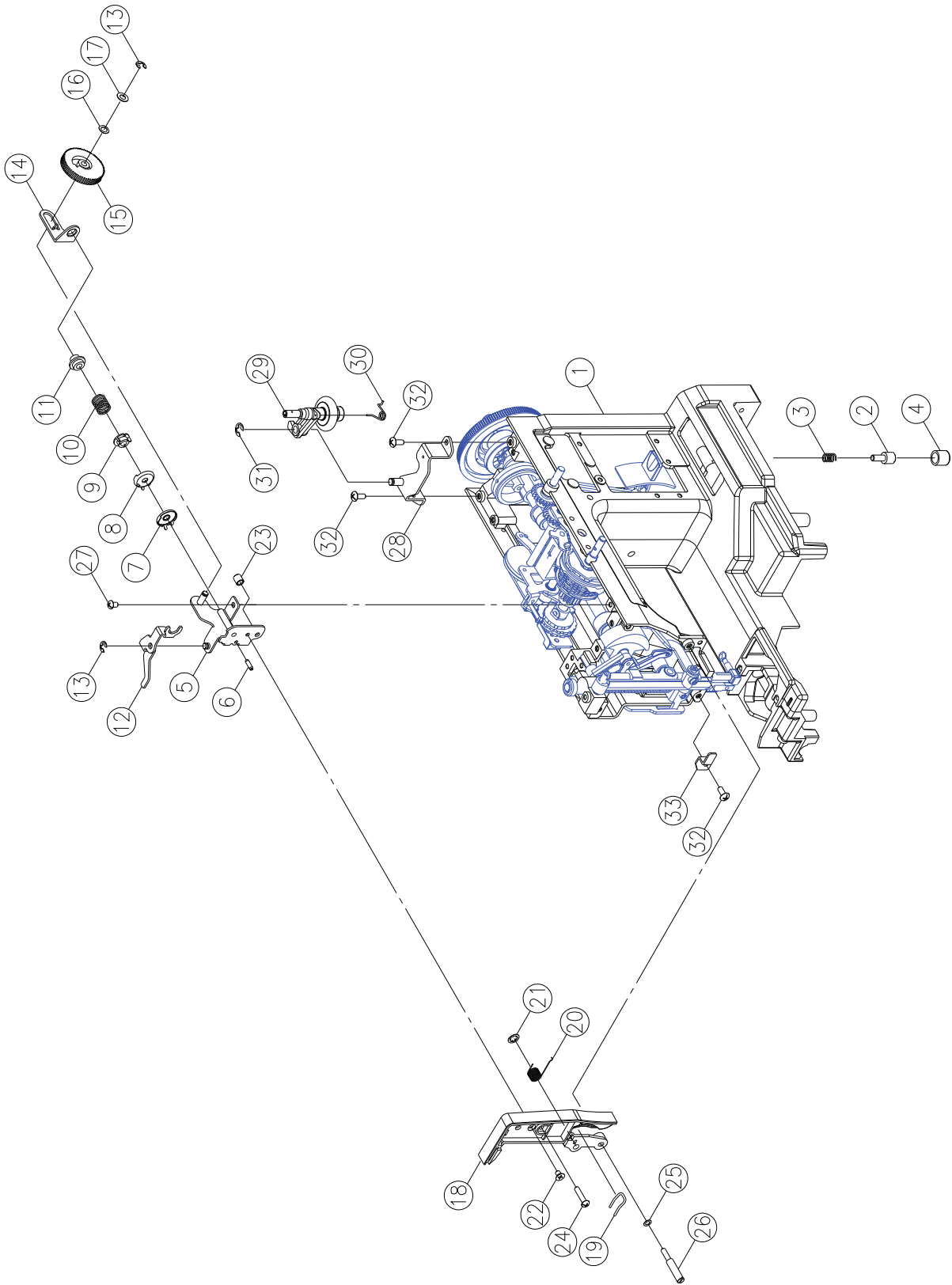


No.	Part No.	Description
1	416515701	Presser bar regulating screw
2	416173401	Presser bar
3	270 H1A0093003	Presser bar bracket
4	416122101	Set screw(M4×6 C)
5	270 E1A2493003	Presser bar spring
6	416128201	Shank complete
7	416118401	Shank screw (9/64×40×7)
8	416128401	Zigzag presser foot complete (J)
9	270 V61973002	Needle bar supporter
10	416515801	Needle bar supporter pin
11	416116301	E-Ring(ETW-5)
12	416515901	Needle bar supporter spring
13	416173601	Needle bar
14	270 TA11033002	Needle clamp
15	416245301	Needle clamp screw
16	270 H10253000	Needle bar bracket (1)
17	270 H10263000	Needle bar bracket (2)
18	416122401	Set screw(M4×4 C)
19	416245501	Needle bar crank rod
20	270 004106202	Set screw(9/64×40×7A)
21	416121001	Set screw(M4×5 C)
22		Needle
23	416516001	Needle bar driving rod
24	416408701	Needle bar driving rod pin
25	270 H1A0053003	Clamp plate
26	270 H1A0063003	Tension lever lifter
27	416116001	E-Ring(ETW-3)
28	270 H1A0073000	Presser bar lifter lever
29	416121501	Set screw (M4×8 A)

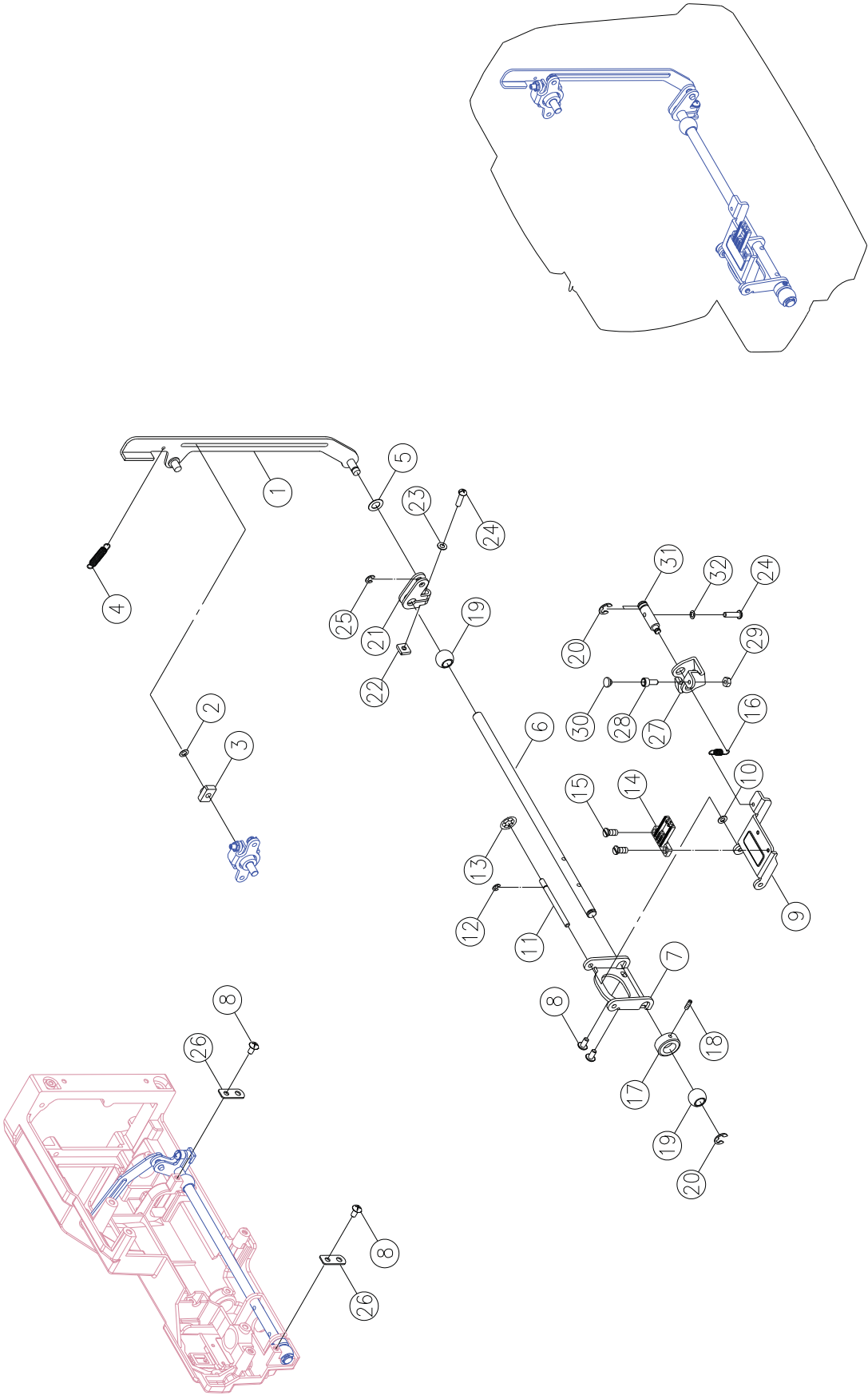


No.	Part No.	Description	
1	416516201	Pattern cam contact plate (front)	M10A
	416516301	Pattern cam contact plate (front)	M20A
2	416516401	Pattern cam contact plate (back)	M10A
	416516501	Pattern cam contact plate (back)	M20A
3	416516601	Pattern selector cam shaft	M10A
	416516701	Pattern selector cam shaft	M20A
4	416183901	Spring pin (□2.5×16×0.6)	
5	416516801	Pattern selector cam	M10A
	416516901	Pattern selector cam	M20A
6	270 004235016	Set screw (M3.5×8A)	
7	416186501	Washer (□8.2×□12×0.5)	
8	416517001	Pattern cam	
9	416151901	Pattern cam shaft collar	
10	416122401	Set screw (M4×4 C)	
11	416517101	BH pattern selector cam	M20A
12	416116401	E-Ring (ETW-6)	
13	416517201	Contact supporter shaft	M10A
	416517301	Contact supporter shaft	M20A
14	416517401	Zigzag release plate	
15	416517501	Zigzag cam contact supporter	
16	416517601	Set screw (M3.5×5A)	
17	416517701	Zigzag cam contact	
18	416517801	Zigzag cam contact spring	
19	270 003010056	E-Ring (ETW-5)	
20	416517901	Feed crank	M10A
	416518001	Feed crank	M20A
21	416518101	BH regulator plate	M20A
22	270 V60813003	BH spring	M20A
23	270 004240706	Set screw (M4×20)	M20A
24	416126801	Nut (ALN-4)	M20A
25	416518201	Feed regulator cam shaft	M20A
26	416518301	Feed regulator gear	M20A
27	416518401	Set screw (M3×8 A)	
28	416518501	Feed regulator cam	M10A
	416518601	Feed regulator cam	M20A
29	416121501	Set screw (M4×8 A)	
30	416518701	Feed rod	
31	416116001	E-Ring (ETW-3)	
32	416518801	Pattern fix spring plate	M10A
	416518901	Pattern fix spring plate	M20A
33	416226601	Set screw (M4×5 B)	
34	416519001	Stitch length dial shaft	M20A
35	416186901	Washer (□6.4×□11×1×0.15)	M20A
36	416116301	E-Ring (ETW-5)	M20A
37	270 V60443000	Feed regulating shaft	
38	416519101	Feed regulating	
39	416519201	Feed regulating plate complete	
40	416519301	Set screw (M4×12)	
41	416122101	Set screw(M4×6 C)	
42	416519401	Reverse rod	
43	270 003010046	E-Ring (ETW-4)	
44	270 V70063003	Feed regulating spring	
45	416519501	Reverse lever button	
46	270 003020043	Washer (CSTW-4)	
47	416155001	Auto threader lever spring	
48	416519601	Pattern selector cam shaft plate	
49	416121101	Set screw(M4×6 C)	

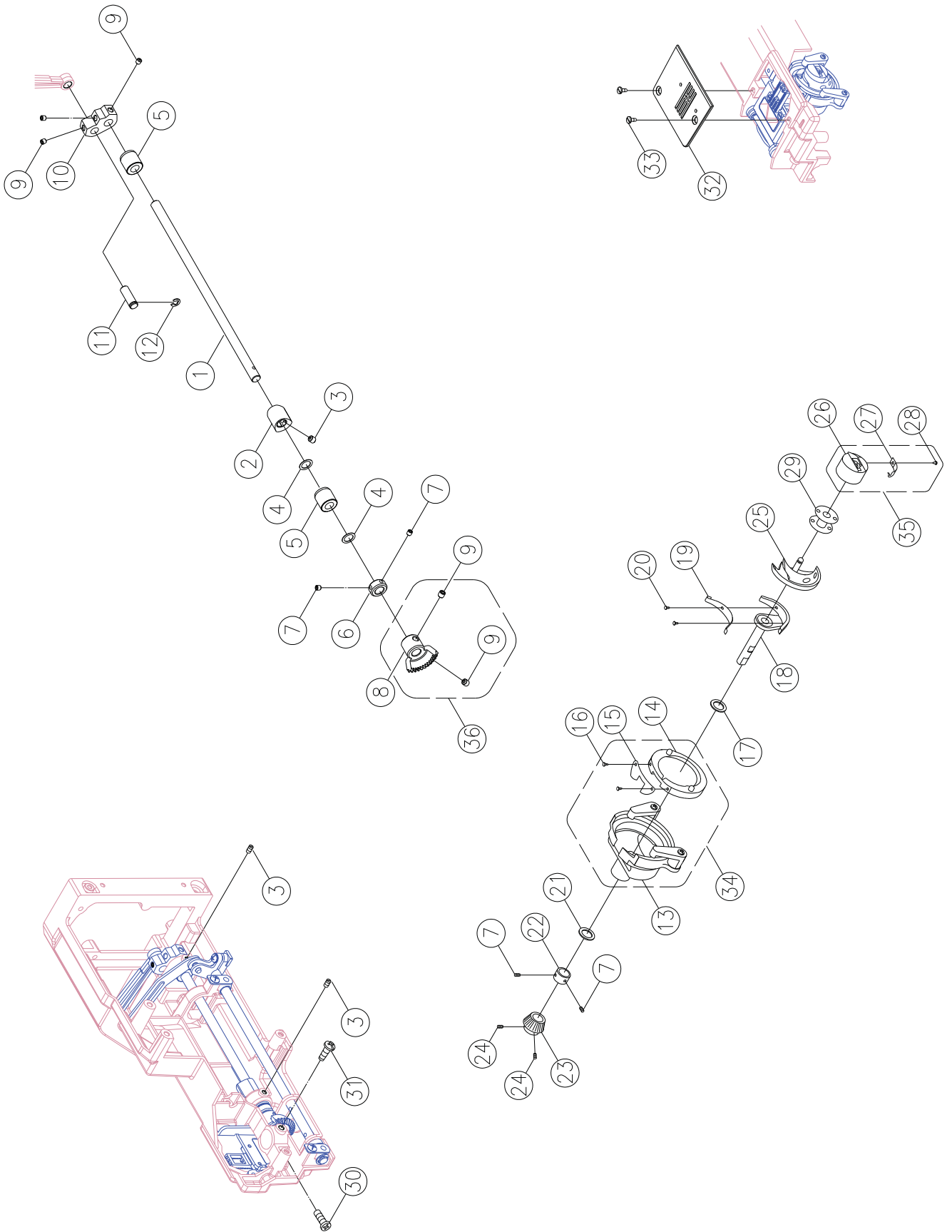
D



No.	Part No.	Description
1	N/S	Arm
2	416154601	Base plate adjustment screw
3	416154401	Base plate adjustment screw spring
4	416519701	Free arm base cushion rubber
5	416519801	Dial tension supporter plate
6	416117501	Hand wheel bushing pin (3×10)
7	416153601	Dial tension disc (1)
8	416146301	Dial tension disc
9	416156701	Dial tension spring regulator
10	416155901	Dial tension spring
11	416153801	Dial tension regulator
12	270 H1A1383003	Dial tension waft plate
13	416116101	E-Ring (ETW -4)
14	270 V60273006	Dial tension spring plate
15	416519901	Dial tension knob
16	416126001	Washer (WW-5)
17	416124501	Washer (5.2×10×0.5)
18	416520001	Dial tension supporter plate cover
19	416198701	Thread guide
20	270 V60303000	Thread guide spring
21	416116701	CS-RING (CS-5)
22	416121901	Set screw (M4×6D)
23	416151701	Dial tension guide spring tube
24	270 004240746	Set screw (M4×18B)
25	416124101	Washer (4.2×8×0.8)
26	270 004240982	Set screw (M4×14 L=37)
27	416121201	Set screw (M4×6B)
28	416520101	Bobbin winder frame complete
29	416520201	Bobbin winder crank complete
30	270 K6A0573003	Bobbin winder crank spring
31	416116301	E-Ring (ETW-5)
32	416121501	Set screw (M4×8 A)
33	416520301	Needle bar stop plate

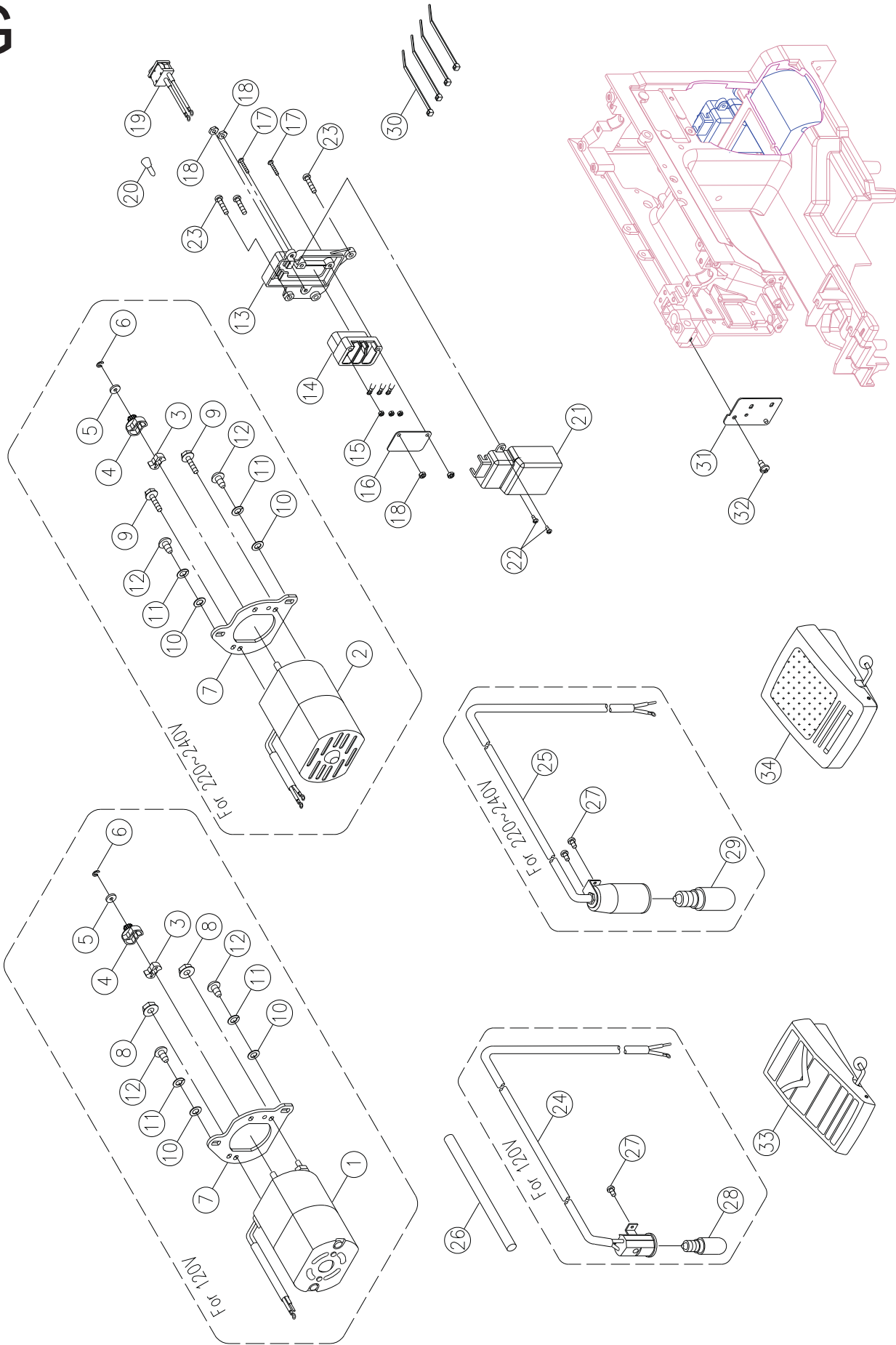


No.	Part No.	Description
1	270 V60453003	Fork rod
2	270 004400180	Endure attrition washer (5.7×10.2×0.5)
3	270 V11533000	Feed regulating block
4	416520401	Fork rod spring
5	270 004400450	Endure attrition washer (5.5×12×0.25)
6	416520501	Feed rock shaft
7	270 V60493003	Feed rock frame
8	416121501	Set screw (M4×8 A)
9	270 V60503003	Feed dog frame
10	416124101	Washer (4.2×8×0.8)
11	270 V60513003	Feed dog frame shaft
12	416116001	E-Ring (ETW-3)
13	270 003090043	Nut (SPN-4)
14	416171601	Feed dog
15	270 004230056	Set screw (M3×5 B)
16	270 V60533003	Feed dog frame spring
17	416151901	Pattern cam shaft collar
18	416122401	Set screw (M4×4 C)
19	270 V60343000	Feed rock bushing
20	416116401	E-Ring (ETW-6)
21	270 V60553003	Feed rock crank
22	270 004840073	Feed rock crank Nut (M4)
23	270 004300093	Washer (4×8×0.5)
24	416121701	Set screw (M4×15 B)
25	416116101	E-Ring (ETW-4)
26	270 V60563003	Bushing holder plate
27	270 V60583003	Feed lifting rock crank
28	270 004250323	Sew screw
29	270 004840022	Nut (M4 t=3)
30	270 K81243000	Sew screw knob
31	270 V60593003	Feed lifting rock shaft
32	270 004600026	Washer (4.2×7.2×1.2)



No.	Part No.	Description 1
1	416520601	Lower shaft
2	416520701	Feed lifting rock cam
3	416122101	Set screw (M4x6C)
4	270 004400410	Endure attrition washer (8.2x12x0.25)
5	416141701	Feed rock bushing
6	416520801	Lower shaft collar
7	416122401	Set screw (M4x4C)
8	270 G4A1573000	Lower shaft gear
9	270 004250203	Set screw (M5x5C)
10	416162901	Crank connecting rod crank
11	270 V10833003	Crank connecting rod crank pin
12	416116301	E-Ring (ETW-5)
13	416158501	Open shuttle race
14	270 V11573001	Shuttle hook holder
15	416159001	Shuttle hook holder spring
16	416153001	Shuttle hook holder spring screw
17	270 004400800	Endure attrition washer (7.6x12x0.13)
18	416153901	Shuttle driver
19	416154201	Shuttle driver spring
20	416118101	Shuttle driver spring screw
21	270 004400210	Endure attrition washer (8.2x16x0.5)
22	416520901	Shuttle driver shaft collar
23	416521001	Shuttle driver shaft gear
24	270 004107293	Set screw(11/64x40x4)
25	416392101	Shuttle hook
26	416153401	Bobbin case
27	270 H13803001	Bobbin case spring
28	416152601	Bobbin case spring set screw
29	416127601	Bobbin
30	416121101	Set screw (M4x10B)
31	270 004250151	Set screw (M5x10B)
32	416171501	Needle plate
33	416122901	Needle plate complete set screw
34	270 V10995000	Open shuttle race complete
35	416153401	Bobbin case complete
36	416245801	Lower shaft gear complete

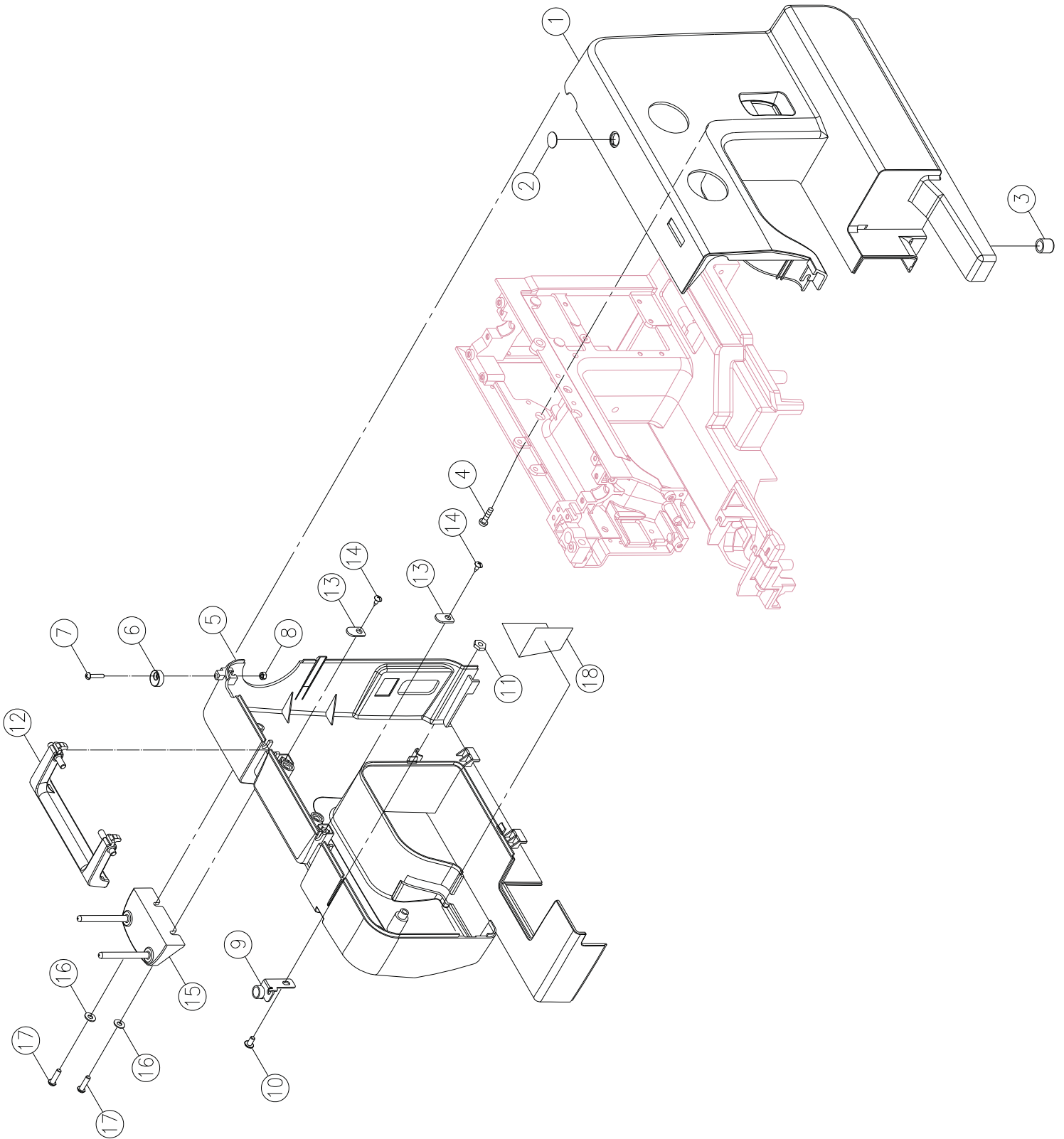
G



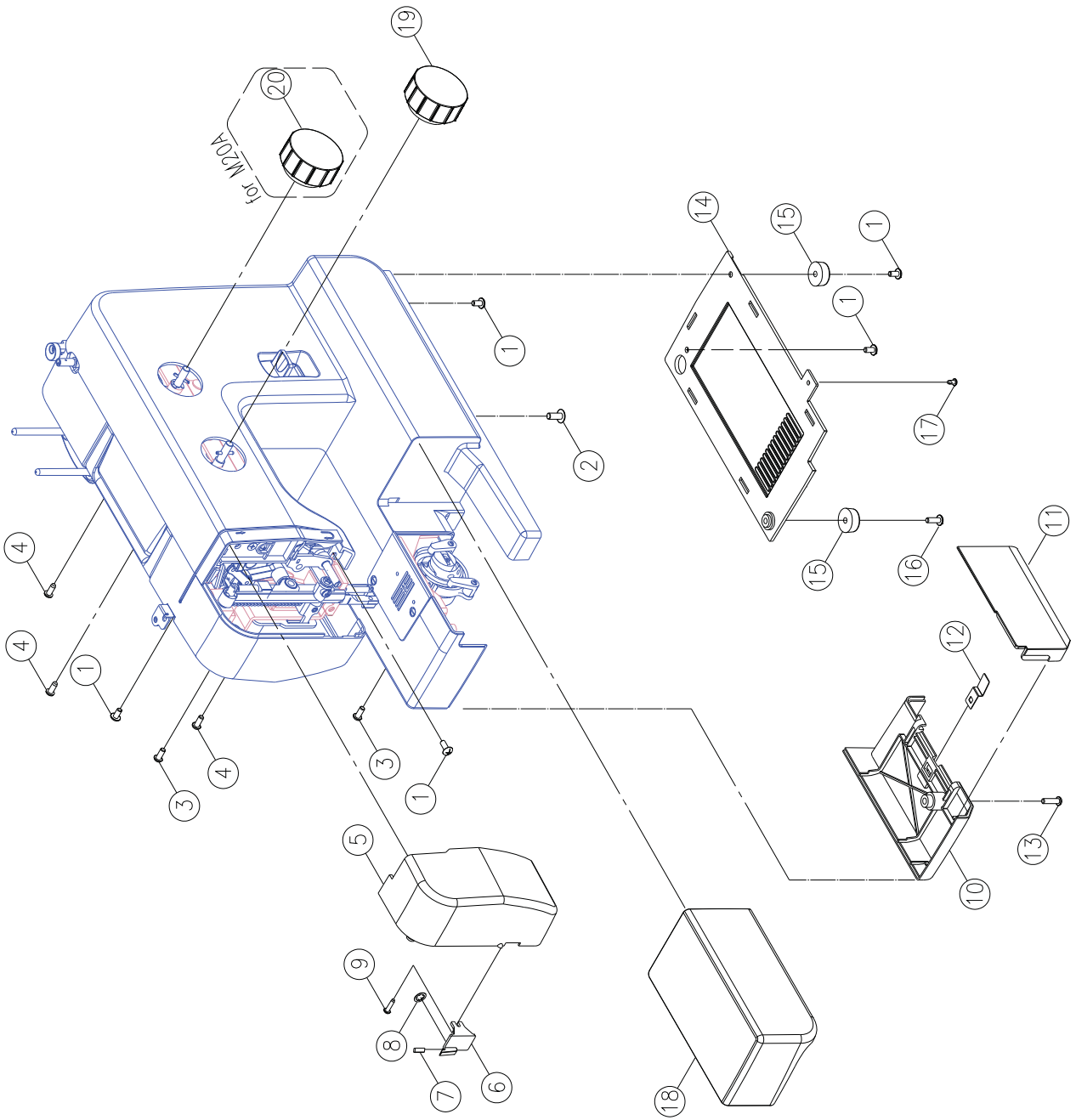
All voltage application & spec. ,please check next page.

No.	Part No.	Description	
1	416521101	Motor (HF-07150)	for 120V/US
2	416521201	Motor (HF-07250)	for 230V/EU.(20100302)
3	416129401	Cushion rubber	
4	416521301	Belt wheel	
5	416114001	Motor feed regulator collar	
6	416116001	E-Ring (ETW-3)	
7	416521415	Motor bracket	
8	270 004840131	Nut (M4 t=5.5)	for 120V
9	416521501	Set screw (M4x10.2)	for 220V-240V
10	416124301	Washer (5.4x10x0.9)	
11	416126201	Spring washer (5.2x9x1)	
12	416224801	Set screw (M5x12)	
13	416521601	Receptacle holder	
14	416184701	Receptacle	
15	270 004840120	Nut (M3x4)	
16	416183601	Concert insulation plate	
17	416184901	Set screw (M3x20)	
18	416302901	Nut (M3 t=2.3)	
19	416521701	Switch ass'y	
20	416133001	End termed	
21	416521801	Receptacle holder cover	
22	416119701	Set screw (M3x8B)	
23	416121701	Set screw (M4x15)	
24	416428401	Lamp holder complete	for 120V
25	416428501	Lamp holder complete	for 220V-240V
26	416521901	Spaghetti	
27	270 004230056	Set screw (M3x5B)	
28	416126901	Lamp (10W)	for 120V
29	416127001	Lamp (15W E-12)	for 240V
30	416113901	Cord clip	
31	416522001	Lamp bracket	
32	416121201	Set screw (M4x6B)	
33	270 002V8E4003	Foot controller (FC-1902)	for 120V /US
34	416522101	Foot controller (KD-2902)	for 230V /EU.

H

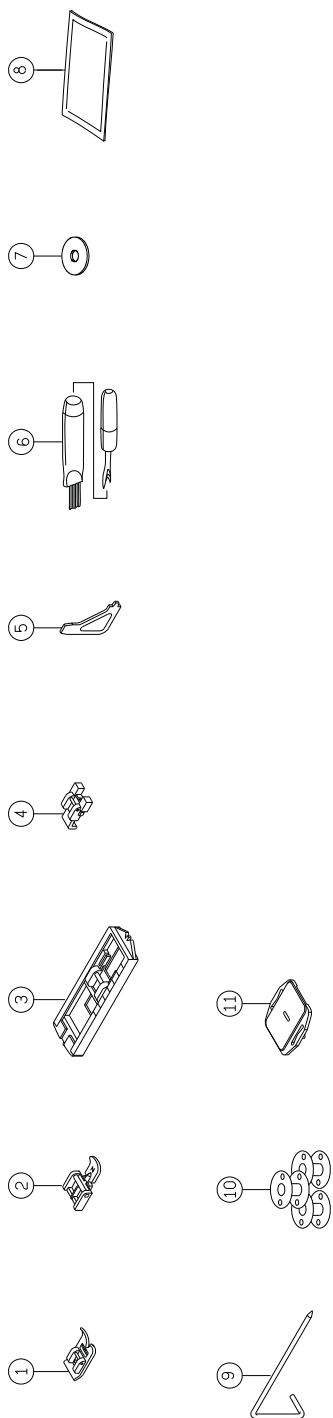


No.	Part No.	Description
1	N/S	Front cover
	N/S	Front cover
2	270 V61503210	Plate (1)
3	N/S	Free arm base cushion rubber
4	270 004240526	Set screw (M4×12 B)
5	N/S	Back cover
6	270 K6B0393000	Bobbin winder stopper
7	416174001	Set screw (9/64×40×16 B)
8	416126301	Nut (9/64×40 t=3)
9	270 V61325000	Bobbin winder thread guide complete
10	416121101	Set screw (M4×10 B)
11	N/S	Nut (6.8×7.8×3 M4×0.7)
12	N/S	Handle
13	N/S	Set washer
14	270 004230216	Set screw (M3×8.5)
15	416515001	Spool pin plate
16	270 004300136	Washer (4.2×8×0.8)
17	270 004240086	Set screw (M4×20 B)
18	N/S	Heat resistant plate



No.	Part No.	Description	
1	416522201	Front cover	
	416522301	Front cover	
2	270 V61503210	Plate (1)	
3	4165224	Free arm base cushion rubber	
4	270 004240526	Set screw (M4×12 B)	
5	416522501	Back cover	
6	270 K6B0393000	Bobbin winder stopper	
7	416174001	Set screw (9/64×40×16 B)	
8	416126301	Nut (9/64×40 t=3)	
9	270 V61325000	Bobbin winder thread guide complete	
10	416121101	Set screw (M4×10 B)	
11	270 004840022	Nut (6.8×7.8×3 M4×0.7)	
12	416522601	Handle	
13	416152201	Set washer	
14	270 004230216	Set screw (M3×8.5)	
15	416515001	Spool pin plate	
16	416124101	Washer (4.2×8×0.8)	
17	270 004240086	Set screw (M4×20 B)	
18	416522701	Heat resistant plate	
1	416121501	Set screw (M4×8 A)	
2	416224801	Set screw (M5×12)	
3	416121101	Set screw (M4×10 B)	
4	416122201	Set screw (M4×10 B)	
5	416522801	Face plate	
6	416522901	Face cutter plate	
7	416172501	Thread cutter	
8	416116701	Washer (CS-5)	
9	270 004230216	Set screw (M3×8.5)	
10	416523001	Bed cover	
11	4165231	Hook cover	
12	416421301	Hook cover spring	
13	416121701	Set screw (M4×15 B)	
14	416523201	Bottom Plate	
15	270 F31103000	Free arm base cushion rubber	
16	416523301	Set screw (M4×12 A)	
17	416523401	Set screw (M3×6)	
18	416487901	Sewing table body	
19	416523501	Pattern selector dial	
20	416523501	Stitch length dial	M20A

Standard accessories



Optional accessories



No.	Part No.	Description
1	416128401	Zigzag presser foot complete (J)
2	416128701	Zipper foot (I)
3	416128901	Buttonhole foot (B)
4	270 006914008	Button sew-on foot
5	270 006093009	Screwdriver (L)
6	416127701	Brush & Seam ripper complete
7	416127301	Spool pin felt
8		Pack of needle
9	416127101	Quilting bar
10	270 006084009	Bobbin
11	416127901	Embroidery plate