

BUYER'S MODEL NO. 132

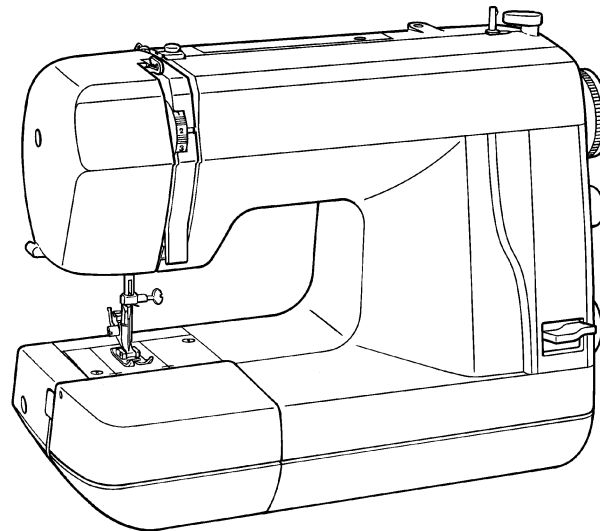
FACTORY MODEL CA31363

ORIGINAL ISSUE September, 1999

SECTION —

REFER TO IMPORTANT NOTICE BELOW

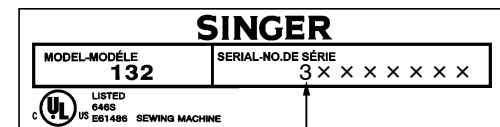
PARTS LIST FOR *featherweight* Model 132



IMPORTANT:

WHEN ORDERING THE PARTS
ALWAYS CHECK THE SERIAL
NUMBER OF THE MACHINE.

FIRST DIGIT OF THE SERIAL
NUMBER MUST MATCH WITH THE
LAST DIGIT OF THE FACTORY
MODEL ABOVE.

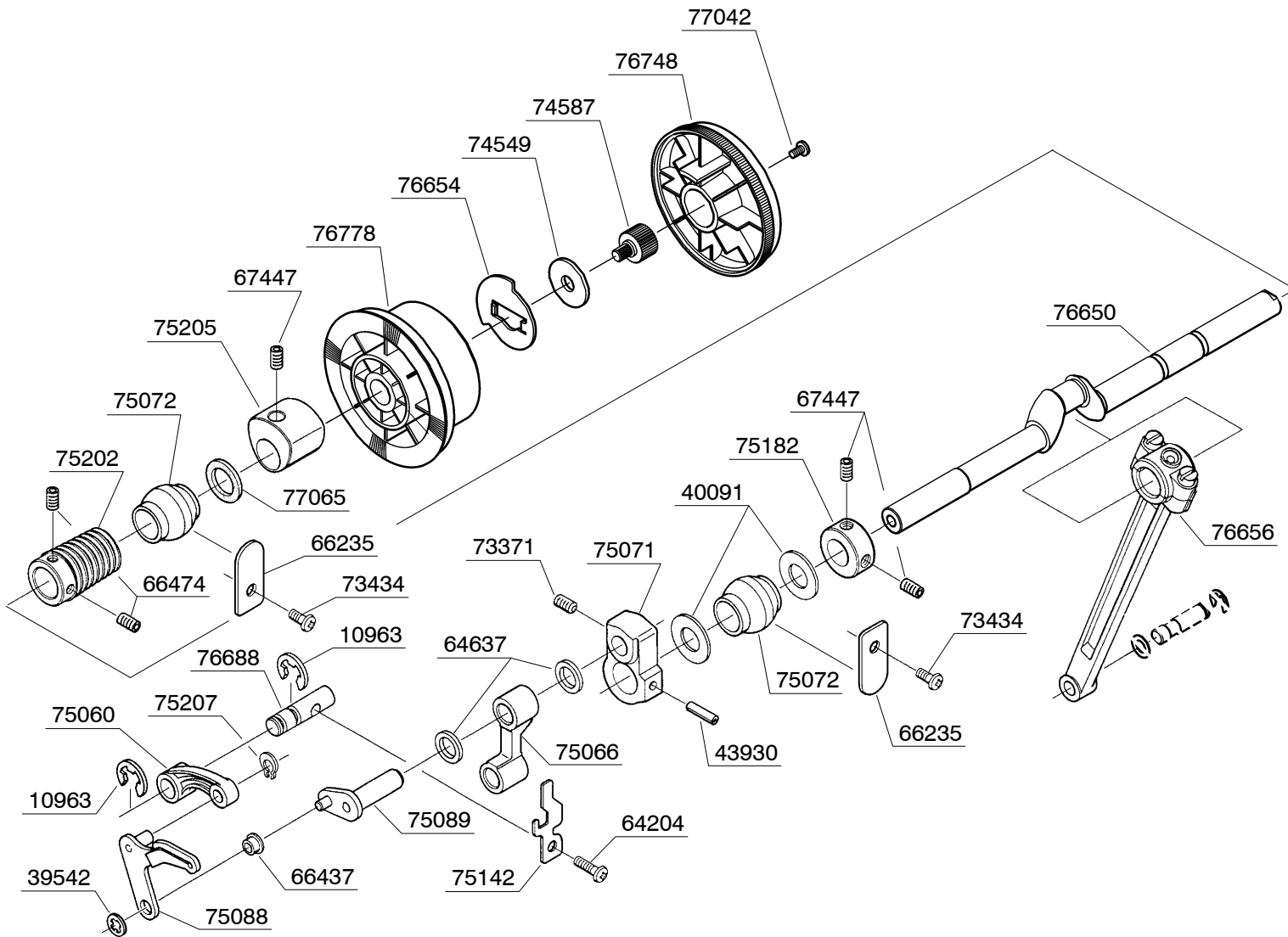


FIRST DIGIT

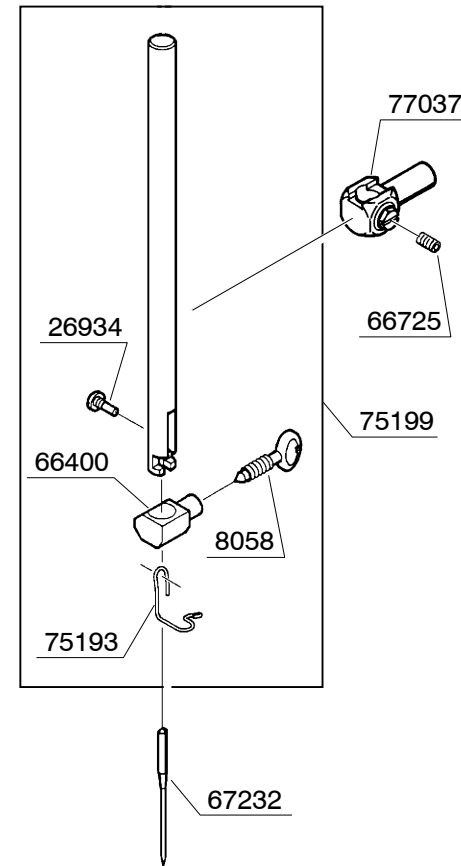
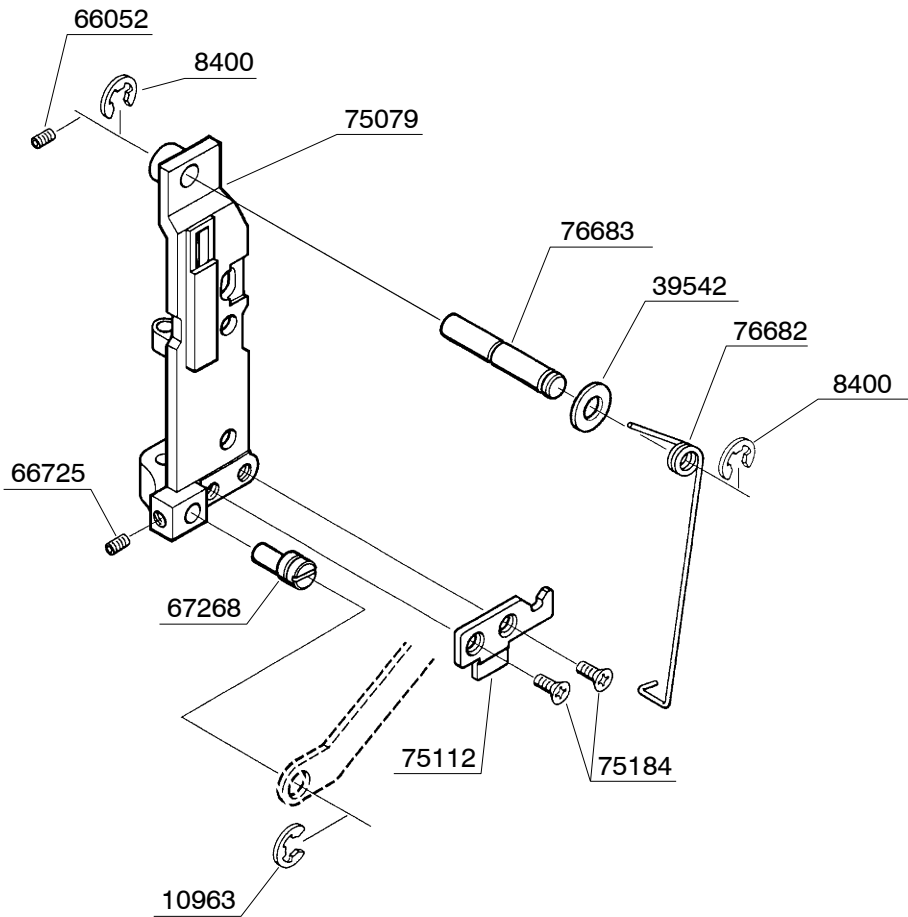
SINGER

| BUYER'S MODEL NO. | 1 3 2 | SECTION | — | PAGE | 1 | REVISION | | REMARKS | | PART NO. | DESCRIPTION |
|--|-----------------|------------|---|------|---|----------|--|---------|--|----------|------------------------|
| BUYER'S MODEL NAME | | | | | | | | | | 61225 | M4 PHILIPS SCREW |
| FACTORY MODEL | CA31363 | | | | | | | | | 66124 | RUBBER FOOT |
| ORIGINAL ISSUE | September, 1999 | SERIAL NO. | | | | | | | | 66481 | M4 STUD SCREW |
| <p>The diagram shows an exploded view of a mechanical assembly. Key components include: <ul style="list-style-type: none"> 61225: M4 Philips screw for the cover. 66124: Rubber foot for the base. 66481: M4 stud screw for the base. 73299: M4 torque nut for the base. 75126: Leaf spring for the cover. 75218: Rubber cushion for the base. 75275: M4 stud screw for the base. 76744: Cover component. 76745: Accessory box complete. 76788: Bed cover. 77042: M4 Philips screws for the base. </p> | | | | | | | | | | 73299 | M4 TORQUE NUT |
| | | | | | | | | | | 75121 | PLATE |
| | | | | | | | | | | 75126 | LEAF SPRING |
| | | | | | | | | | | 75218 | RUBBER CUSHION |
| | | | | | | | | | | 75275 | M4 STUD SCREW |
| | | | | | | | | | | 76744 | COVER |
| | | | | | | | | | | 76745 | ACCESSORY BOX COMPLETE |
| | | | | | | | | | | 76788 | BED COVER |
| | | | | | | | | | | 77042 | M4 PHILIPS SCREW |

| BUYER'S MODEL NO. | 1 3 2 | SECTION | | PAGE | 2 | REVISION | | REMARKS | | PART NO. | DESCRIPTION |
|--------------------|-----------------|------------|--|------|---|----------|--|---------|--|----------|---------------------|
| BUYER'S MODEL NAME | | | | | | | | | | 10963 | E6 CLIP-ON-WASHER |
| FACTORY MODEL | CA31363 | | | | | | | | | 39542 | CLIP-ON-WASHER |
| ORIGINAL ISSUE | September, 1999 | SERIAL NO. | | | | | | | | 40091 | THRUST WASHER |
| | | | | | | | | | | 43930 | SPRING PIN |
| | | | | | | | | | | 64204 | M4 PHILIPS SCREW |
| | | | | | | | | | | 64637 | THRUST WASHER |
| | | | | | | | | | | 66235 | SECURING PLATE |
| | | | | | | | | | | 66437 | BUSH |
| | | | | | | | | | | 66474 | M5 SCREW |
| | | | | | | | | | | 67447 | M5 SCREW |
| | | | | | | | | | | 73371 | M6 SCREW |
| | | | | | | | | | | 73434 | M4 PHILIPS SCREW |
| | | | | | | | | | | 74549 | WASHER |
| | | | | | | | | | | 74587 | M6 STUD SCREW |
| | | | | | | | | | | 75060 | TAKE-UP LEVER CRANK |
| | | | | | | | | | | 75066 | NEEDLE BAR CRANK |
| | | | | | | | | | | 75071 | BALANCE CAM |
| | | | | | | | | | | 75072 | BALL BUSHING |
| | | | | | | | | | | 75088 | TAKE-UP LEVER |
| | | | | | | | | | | 75089 | CRANK SHAFT |
| | | | | | | | | | | 75142 | CORD GUIDE |
| | | | | | | | | | | 75182 | COLLAR |
| | | | | | | | | | | 75202 | SPIRAL GEAR |
| | | | | | | | | | | 75205 | FEED REGULATING CAM |
| | | | | | | | | | | 75207 | CS-CLIP |
| | | | | | | | | | | 76650 | MAIN SHAFT |
| | | | | | | | | | | 76654 | WASHER |
| | | | | | | | | | | 76656 | CONNECTING ROD |
| | | | | | | | | | | 76688 | SHAFT |
| | | | | | | | | | | 76748 | HAND WHEEL |
| | | | | | | | | | | 76778 | BELT PULLEY |
| | | | | | | | | | | 77042 | M4 PHILIPS SCREW |
| | | | | | | | | | | 77065 | FELT |

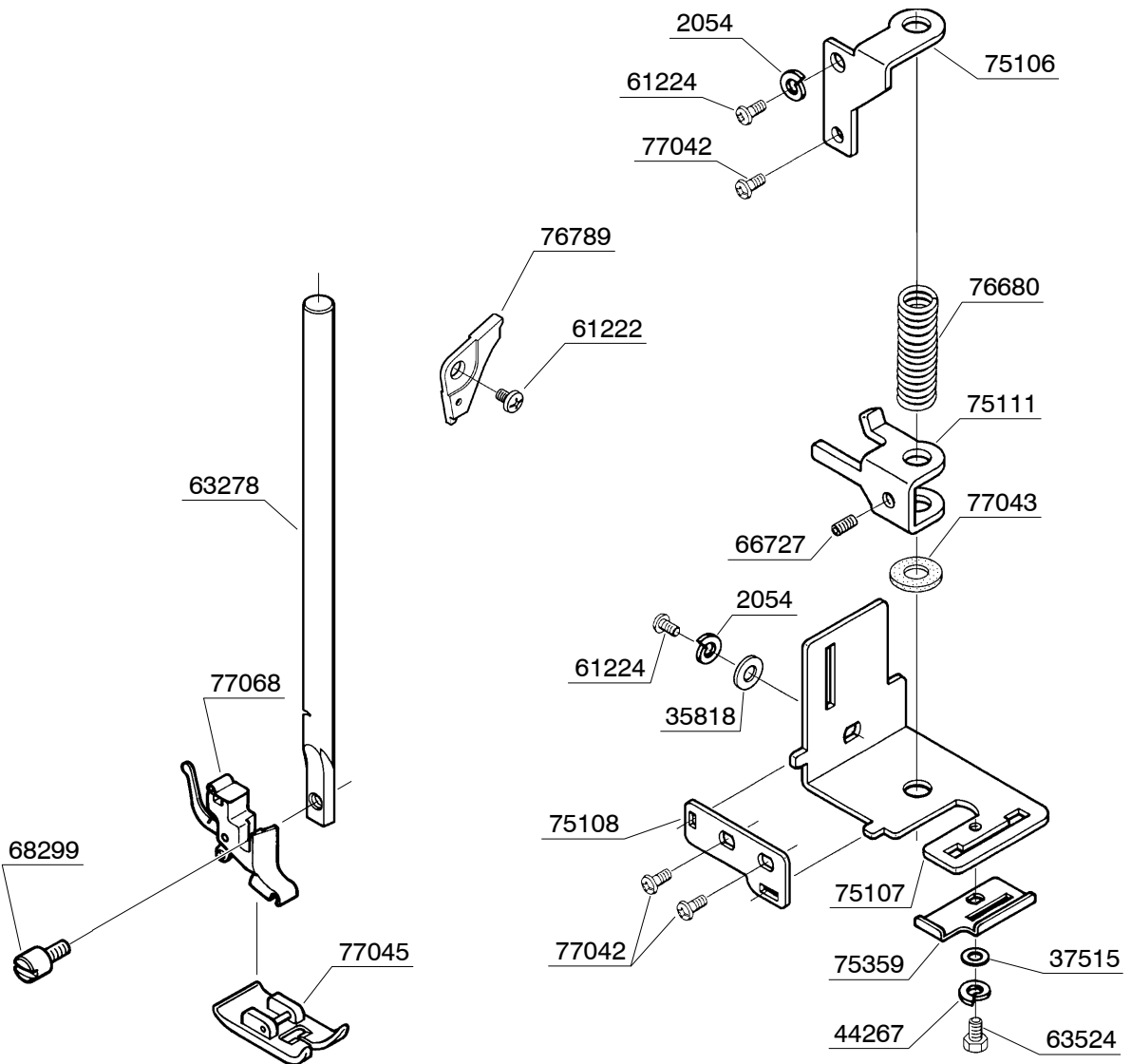


| BUYER'S MODEL NO. | 1 3 2 | SECTION | PAGE | REVISION | REMARKS | PART NO. | DESCRIPTION |
|--------------------|-----------------|------------|------|----------|---------|----------|--------------------|
| BUYER'S MODEL NAME | | — | 3 | | | 8058 | NEEDLE CLAMP SCREW |
| FACTORY MODEL | CA31363 | | | | | 8400 | E5 CLIP-ON-WASHER |
| ORIGINAL ISSUE | September, 1999 | SERIAL NO. | | | | 10963 | E6 CLIP-ON-WASHER |
| | | | | | | 26934 | #8 SCREW |
| | | | | | | 39542 | WASHER |

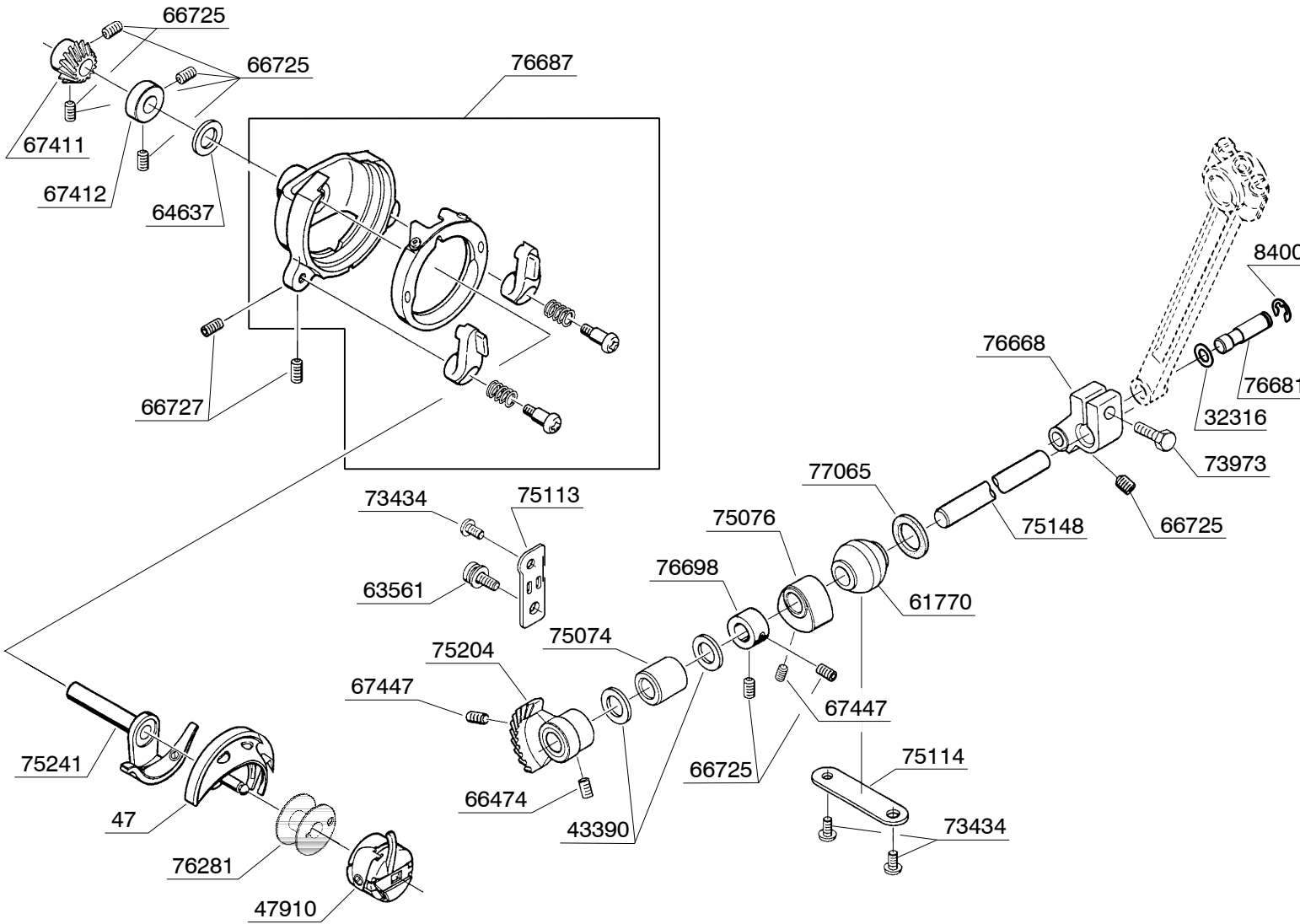


| | |
|-------|---------------------------|
| 66052 | M4 SCREW |
| 66400 | NEEDLE CLAMP |
| 66725 | M4 SCREW |
| 67232 | NEEDLE |
| 67268 | ECCENTRIC PIN |
| 75079 | NEEDLE BAR SUPPORT |
| 75112 | LATCH PLATE |
| 75184 | M4 COUNTERSUNK HEAD SCREW |
| 75193 | THREAD GUIDE |
| 75199 | NEEDLE BAR ASSEMBLY |
| 76682 | TORSION SPRING |
| 76683 | SHAFT |
| 77037 | NEEDLE BAR CLAMP |

| BUYER'S MODEL NO. | 1 3 2 | SECTION | — | PAGE | 4 | REVISION | | REMARKS | | PART NO. | DESCRIPTION |
|--------------------|-----------------|------------|---|------|---|----------|--|---------|--|----------|-------------------------|
| BUYER'S MODEL NAME | | | | | | | | | | 2054 | SPRING WASHER |
| FACTORY MODEL | CA31363 | | | | | | | | | 35818 | WASHER |
| ORIGINAL ISSUE | September, 1999 | SERIAL NO. | | | | | | | | 37515 | WASHER |
| | | | | | | | | | | 44267 | SPRING WASHER |
| | | | | | | | | | | 61222 | M4 PHILIPS SCREW |
| | | | | | | | | | | 61224 | M4 PHILIPS SCREW |
| | | | | | | | | | | 63278 | PRESSER BAR |
| | | | | | | | | | | 63524 | M3 BOLT |
| | | | | | | | | | | 66727 | M4 SCREW |
| | | | | | | | | | | 68299 | #7 SCREW FOR SHANK |
| | | | | | | | | | | 75106 | PRESSER BAR GUIDE |
| | | | | | | | | | | 75107 | BRACKET A |
| | | | | | | | | | | 75108 | BRACKET B |
| | | | | | | | | | | 75111 | PRESSER BAR GUIDE BLOCK |
| | | | | | | | | | | 75359 | STOPPER |
| | | | | | | | | | | 76680 | COMPRESSION SPRING |
| | | | | | | | | | | 76789 | LEVER CAP |
| | | | | | | | | | | 77042 | M4 PHILIPS SCREW |
| | | | | | | | | | | 77043 | FELT |
| | | | | | | | | | | 77045 | ZIGZAG PRESSER FOOT |
| | | | | | | | | | | 77068 | SHANK |

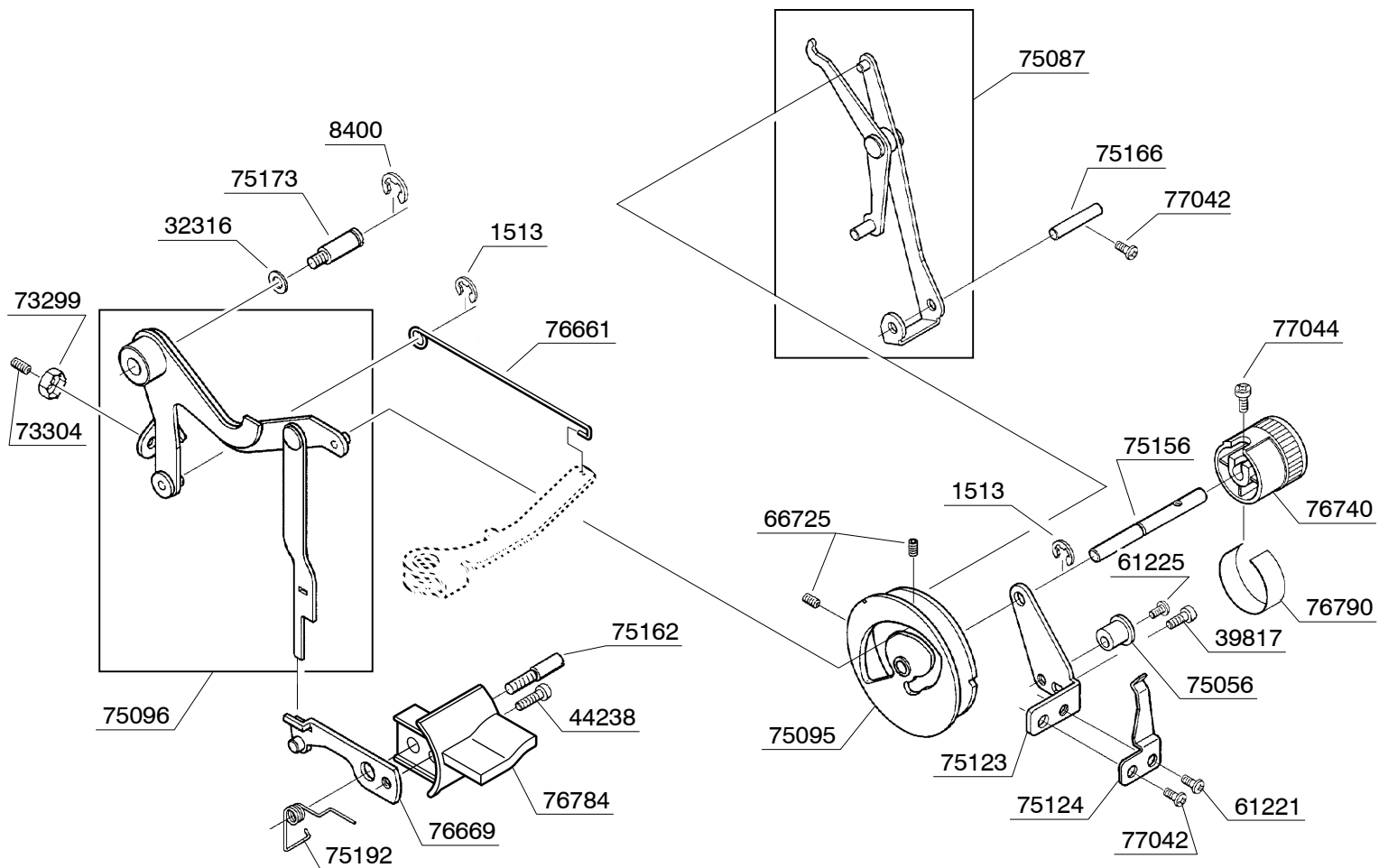


| BUYER'S MODEL NO. | 1 3 2 | SECTION | | PAGE | 5 | REVISION | | REMARKS | | PART NO. | DESCRIPTION |
|--------------------|-----------------|------------|--|------|---|----------|--|---------|--|----------|------------------------------|
| BUYER'S MODEL NAME | | | | | | | | | | 47 | SHUTTLE HOOK |
| FACTORY MODEL | CA31363 | | | | | | | | | 8400 | E5 CLIP-ON-WASHER |
| ORIGINAL ISSUE | September, 1999 | SERIAL NO. | | | | | | | | 32316 | WASHER |
| | | | | | | | | | | 43390 | THRUST WASHER |
| | | | | | | | | | | 47910 | BOBBIN CASE |
| | | | | | | | | | | 61770 | BALL BUSHING |
| | | | | | | | | | | 63561 | M4 PHILIPS SCREW WITH WASHER |
| | | | | | | | | | | 64637 | THRUST WASHER |
| | | | | | | | | | | 66474 | M5 SCREW |
| | | | | | | | | | | 66725 | M4 SCREW |
| | | | | | | | | | | 66727 | M4 SCREW |
| | | | | | | | | | | 67411 | SPIRAL GEAR |
| | | | | | | | | | | 67412 | COLLAR |
| | | | | | | | | | | 67447 | M5 SCREW |
| | | | | | | | | | | 73434 | M4 PHILIPS SCREW |
| | | | | | | | | | | 73973 | M4 BOLT |
| | | | | | | | | | | 75074 | BUSHING |
| | | | | | | | | | | 75076 | FEED-DOG LIFTING CAM |
| | | | | | | | | | | 75113 | SECURING PLATE A |
| | | | | | | | | | | 75114 | SECURING PLATE B |
| | | | | | | | | | | 75148 | LOWER SHAFT |
| | | | | | | | | | | 75204 | BEVEL GEAR |
| | | | | | | | | | | 75241 | SHUTTLE DRIVER |
| | | | | | | | | | | 76281 | BOBBIN |
| | | | | | | | | | | 76668 | LOWER SHAFT ROCKER |
| | | | | | | | | | | 76681 | HEADED PIN |
| | | | | | | | | | | 76687 | SHUTTLE RACE ASSEMBLY |
| | | | | | | | | | | 76698 | COLLAR |
| | | | | | | | | | | 77065 | FELT |

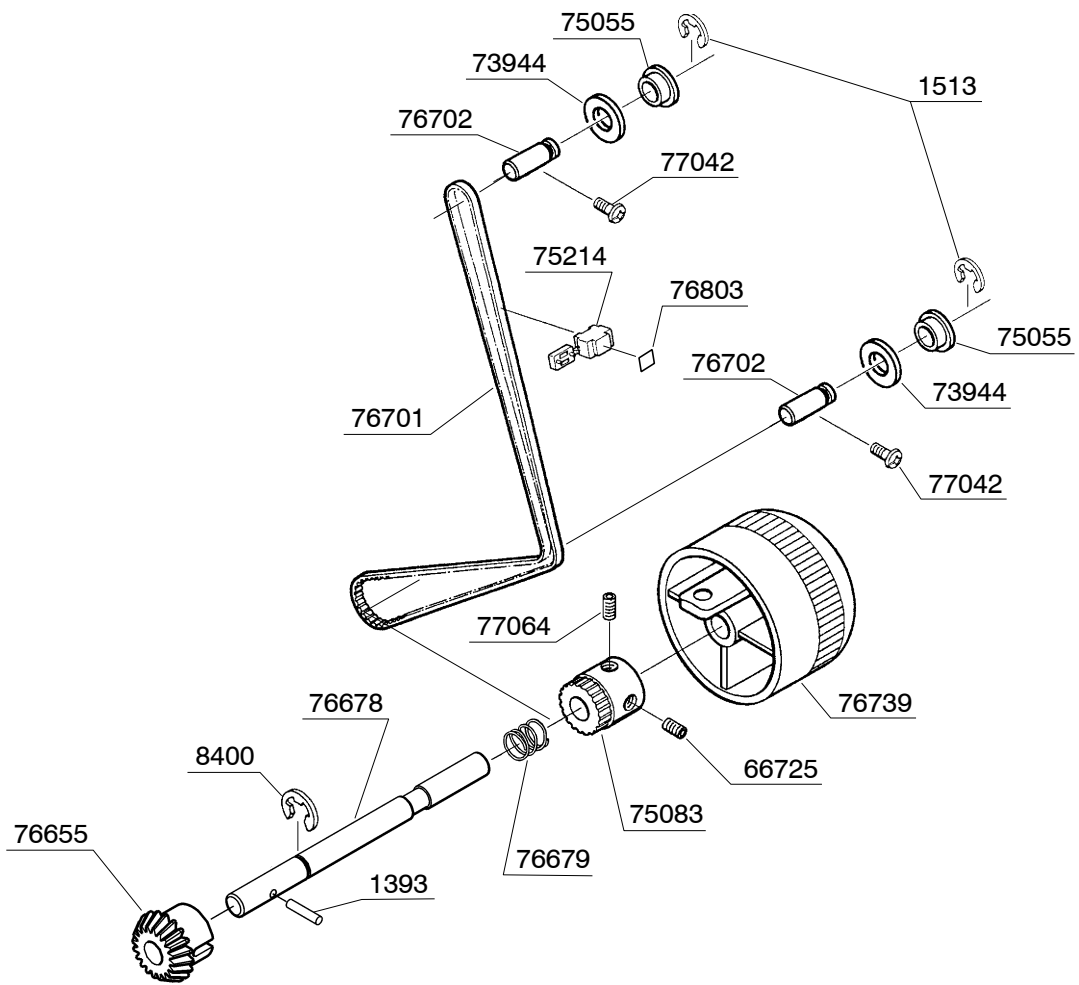


| BUYER'S MODEL NO. | 1 3 2 | SECTION | | PAGE | 6 | REVISION | | REMARKS | | PART NO. | DESCRIPTION |
|--------------------|------------------------------|------------|--|------|---|----------|--|---------|--|----------|------------------------------|
| BUYER'S MODEL NAME | | | | | | | | | | 1513 | E4 CLIP-ON-WASHER |
| FACTORY MODEL | CA31363 | | | | | | | | | 1520 | E3 CLIP-ON-WASHER |
| ORIGINAL ISSUE | September, 1999 | SERIAL NO. | | | | | | | | 8400 | E5 CLIP-ON-WASHER |
| | | | | | | | | | | 10963 | E6 CLIP-ON-WASHER |
| | | | | | | | | | | 53321 | THRUST WASHER |
| | | | | | | | | | | 61224 | M4 PHILIPS SCREW |
| | | | | | | | | | | 61770 | BALL BUSHING |
| | | | | | | | | | | 62215 | M4 NUT |
| | | | | | | | | | | 64637 | THRUST WASHER |
| | | | | | | | | | | 66235 | SECURING PLATE |
| | | | | | | | | | | 66727 | M4 SCREW |
| | | | | | | | | | | 67251 | M3.5 PHILIPS SCREW |
| | | | | | | | | | | 67394 | M5 PHILIPS SCREW |
| | | | | | | | | | | 67401 | EXTENSION SPRING |
| | | | | | | | | | | 67406 | M4 PHILIPS SCREW |
| | | | | | | | | | | 67511 | EXTENSION SPRING |
| | | | | | | | | | | 73208 | M4 PHILIPS SCREW |
| | | | | | | | | | | 73434 | M4 PHILIPS SCREW |
| | | | | | | | | | | 73944 | THRUST WASHER |
| | | | | | | | | | | 74388 | SECURING PLATE |
| | | | | | | | | | | 75067 | FEED REGULATOR |
| | | | | | | | | | | 75069 | FEED REGULATING SHAFT ROCKER |
| | | | | | | | | | | 75073 | BUSHING |
| | | | | | | | | | | 75081 | FEED-DOG |
| | | | | | | | | | | 75091 | SECURING PLATE |
| 75094 | FEED REGULATING ROD | | | | | | | | | | |
| 75115 | SECURING PLATE C | | | | | | | | | | |
| 75169 | HEADED PIN | | | | | | | | | | |
| 75186 | COMPRESSION SPRING | | | | | | | | | | |
| 75190 | TORSION SPRING | | | | | | | | | | |
| 75200 | COMPRESSION SPRING | | | | | | | | | | |
| 76657 | FEED-DOG LIFTING ARM BRACKET | | | | | | | | | | |
| 76659 | FEED REGULATING BRACKET | | | | | | | | | | |
| 76677 | FEED REGULATING SHAFT | | | | | | | | | | |
| 76684 | SHAFT | | | | | | | | | | |
| 76700 | SHAFT | | | | | | | | | | |
| 77039 | SLIDE BLOCK | | | | | | | | | | |
| 77042 | M4 PHILIPS SCREW | | | | | | | | | | |

| BUYER'S MODEL NO. | 1 3 2 | SECTION | | PAGE | 7 | REVISION | | REMARKS | | PART NO. | DESCRIPTION |
|--------------------|-----------------|------------|--|------|---|----------|--|---------|--|----------|--------------------------------------|
| BUYER'S MODEL NAME | | — | | | | | | | | 1513 | E4 CLIP-ON-WASHER |
| FACTORY MODEL | CA31363 | | | | | | | | | 8400 | E5 CLIP-ON-WASHER |
| ORIGINAL ISSUE | September, 1999 | SERIAL NO. | | | | | | | | 32316 | WASHER |
| | | | | | | | | | | 39817 | M4 PHILIPS SCREW |
| | | | | | | | | | | 44238 | M4 PHILIPS SCREW |
| | | | | | | | | | | 61221 | M4 PHILIPS SCREW |
| | | | | | | | | | | 61225 | M4 PHILIPS SCREW |
| | | | | | | | | | | 66725 | M4 SCREW |
| | | | | | | | | | | 73299 | M4 TORQUE NUT |
| | | | | | | | | | | 73304 | M4 SCREW |
| | | | | | | | | | | 75056 | ECCENTRIC IDLER PULLEY |
| | | | | | | | | | | 75087 | STRETCH STITCH CONTROL LINK ASSEMBLY |
| | | | | | | | | | | 75095 | STITCH LENGTH CONTROL CAM |
| | | | | | | | | | | 75096 | FEED CONTROL LINK ASSEMBLY |
| | | | | | | | | | | 75123 | CONTROL DIAL BRACKET |
| | | | | | | | | | | 75124 | LEAF SPRING |
| | | | | | | | | | | 75156 | SHAFT |
| | | | | | | | | | | 75162 | M4 STUD SCREW |
| | | | | | | | | | | 75166 | SHAFT |
| | | | | | | | | | | 75173 | M4 STUD SCREW |
| | | | | | | | | | | 75192 | TORSION SPRING |
| | | | | | | | | | | 76661 | BH WIRE ROD |
| | | | | | | | | | | 76669 | REVERSE STITCH ARM |
| | | | | | | | | | | 76740 | STITCH LENGTH CONTROL DIAL |
| | | | | | | | | | | 76784 | REVERSE STITCH LEVER |
| | | | | | | | | | | 76790 | SEAL |
| | | | | | | | | | | 77042 | M4 PHILIPS SCREW |
| | | | | | | | | | | 77044 | M3 PHILIPS SCREW |

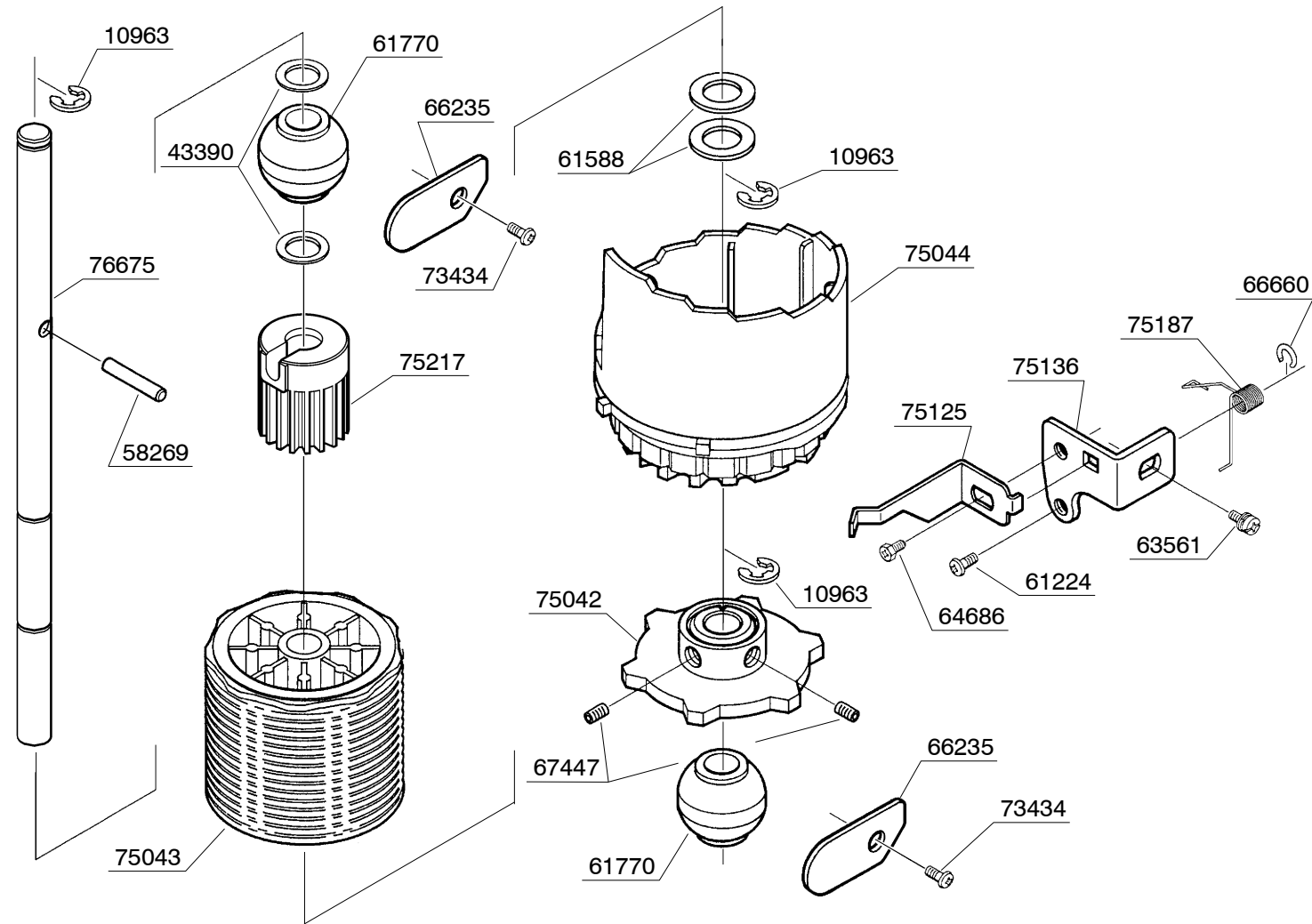


| | | | | | | | |
|--------------------|-----------------|------------|------|----------|---------|----------|-------------------|
| BUYER'S MODEL NO. | 1 3 2 | SECTION | PAGE | REVISION | REMARKS | PART NO. | DESCRIPTION |
| BUYER'S MODEL NAME | | — | 8 | | | 1393 | SPRING PIN |
| FACTORY MODEL | CA31363 | | | | | | 1513 |
| ORIGINAL ISSUE | September, 1999 | SERIAL NO. | | | | 8400 | E5 CLIP-ON-WASHER |
| | | | | | | 66725 | M4 SCREW |
| | | | | | | 73944 | THRUST WASHER |



- 75055 BELT ROLLER
- 75083 GEAR A
- 75214 INDICATOR
- 76655 BEVEL GEAR
- 76678 SHAFT
- 76679 TORSION SPRING
- 76701 BELT
- 76702 SHAFT
- 76739 PATTERN SELECTING DIAL
- 76803 SEAL
- 77042 M4 PHILIPS SCREW
- 77064 M4 SCREW

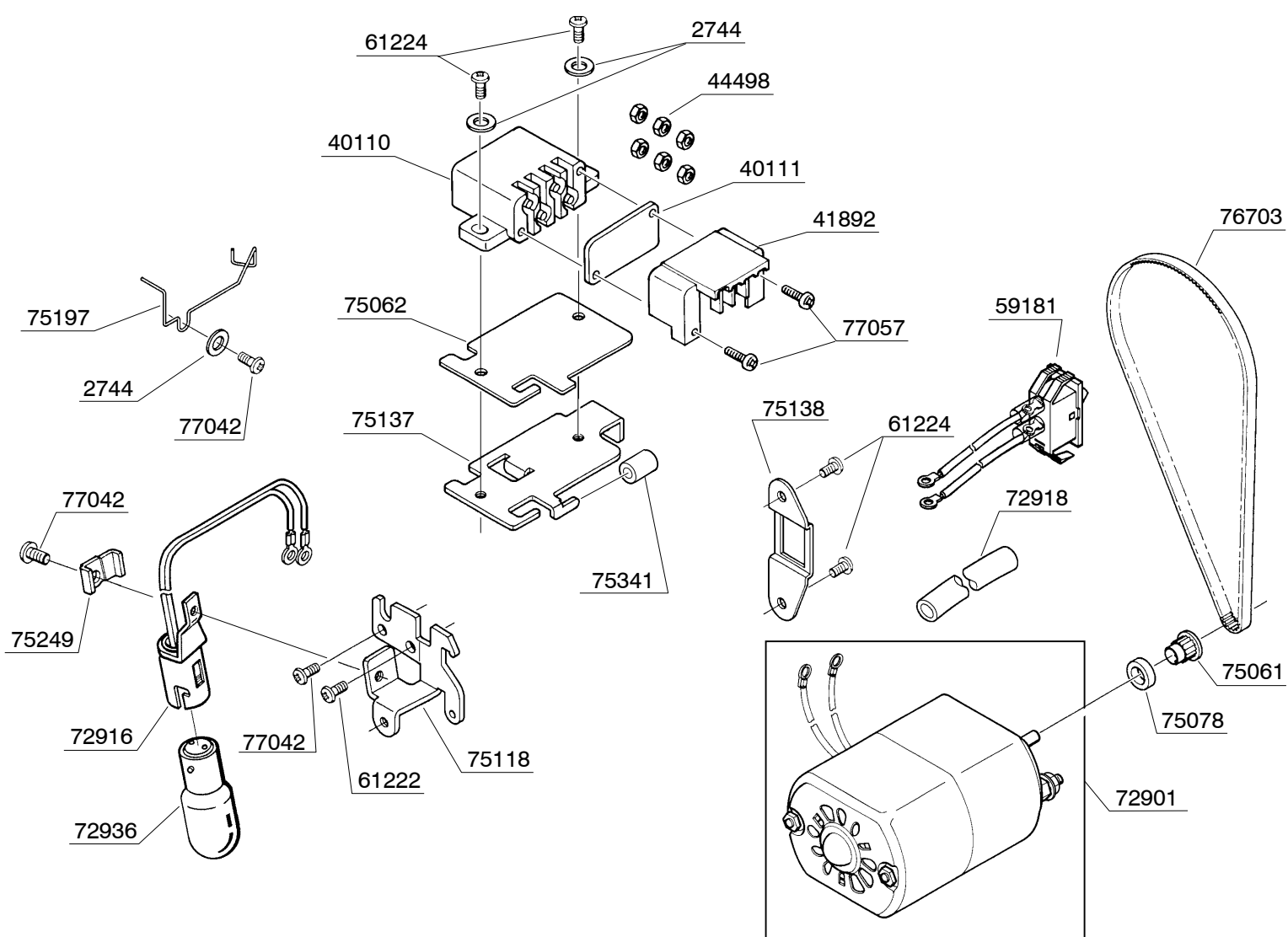
| | | | | | | | |
|--------------------|-----------------|------------|------|----------|---------|----------|-------------------|
| BUYER'S MODEL NO. | 1 3 2 | SECTION | PAGE | REVISION | REMARKS | PART NO. | DESCRIPTION |
| BUYER'S MODEL NAME | | — | 9 | | | 10963 | E6 CLIP-ON-WASHER |
| FACTORY MODEL | CA31363 | | | | | 43390 | THRUST WASHER |
| ORIGINAL ISSUE | September, 1999 | SERIAL NO. | | | | 58269 | SPRING PIN |
| | | | | | | 61224 | M4 PHILIPS SCREW |
| | | | | | | 61588 | WASHER |



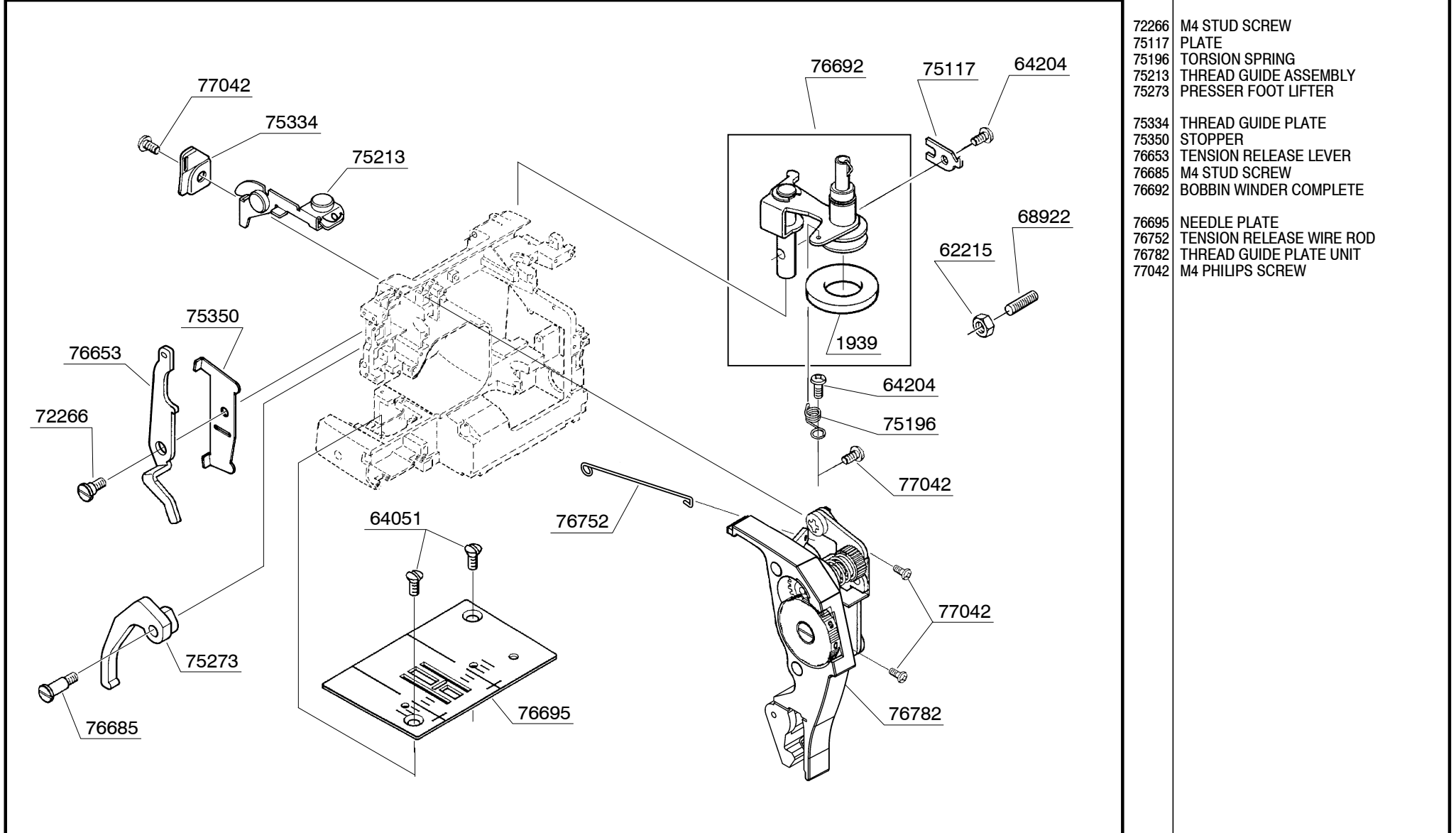
- 61770 BALL BUSHING
- 63561 M4 PHILIPS SCREW WITH WASHER
- 64686 M4 BOLT
- 66235 SECURING PLATE
- 66660 CLIP-ON-WASHER
- 67447 M5 SCREW
- 73434 M4 PHILIPS SCREW
- 75042 STRETCH STITCHING CAM
- 75043 PATTERN CAM
- 75044 PATTERN SELECTING CAM
- 75125 LEAF SPRING
- 75136 BRACKET
- 75187 TORSION SPRING
- 75217 WORM GEAR
- 76675 SHAFT

| BUYER'S MODEL NO. | 1 3 2 | SECTION | — | PAGE | 10 | REVISION | | REMARKS | | PART NO. | DESCRIPTION |
|--------------------|-----------------|------------|---|------|----|----------|--|---------|--|----------|--------------------------------|
| BUYER'S MODEL NAME | | | | | | | | | | 1513 | E4 CLIP-ON-WASHER |
| FACTORY MODEL | CA31363 | | | | | | | | | 10963 | E6 CLIP-ON-WASHER |
| ORIGINAL ISSUE | September, 1999 | SERIAL NO. | | | | | | | | 39163 | TAPPING SCREW |
| | | | | | | | | | | 53321 | THRUST WASHER |
| | | | | | | | | | | 58269 | SPRING PIN |
| | | | | | | | | | | 61588 | THRUST WASHER |
| | | | | | | | | | | 64204 | M4 PHILIPS SCREW |
| | | | | | | | | | | 64637 | THRUST WASHER |
| | | | | | | | | | | 68922 | M4 SCREW |
| | | | | | | | | | | 73299 | M4 TORQUE NUT |
| | | | | | | | | | | 75057 | ZIGZAG GUIDE BLOCK |
| | | | | | | | | | | 75064 | PATTERN SELECTING CAM CLAW |
| | | | | | | | | | | 75099 | PATTERN CAM FOLLOWER |
| | | | | | | | | | | 75120 | CAM FOLLOWER GUIDE BRACKET |
| | | | | | | | | | | 75165 | SHAFT B |
| | | | | | | | | | | 75189 | EXTENSION SPRING |
| | | | | | | | | | | 76658 | STRETCH STITCHING CAM FOLLOWER |
| | | | | | | | | | | 76660 | BH CAM FOLLOWER |
| | | | | | | | | | | 76666 | ZIGZAG GUIDE BAR |
| | | | | | | | | | | 76676 | SHAFT A |

| BUYER'S MODEL NO. | 1 3 2 | SECTION | | PAGE | 11 | REVISION | | REMARKS | | PART NO. | DESCRIPTION |
|--------------------|-----------------|------------|--|------|----|----------|--|---------|--|----------|-------------------------|
| BUYER'S MODEL NAME | | | | | | | | | | 2744 | WASHER |
| FACTORY MODEL | CA31363 | | | | | | | | | 40110 | TERMINAL BLOCK ASSEMBLY |
| ORIGINAL ISSUE | September, 1999 | SERIAL NO. | | | | | | | | 40111 | TERMINAL BLOCK COVER |
| | | | | | | | | | | 41892 | TERMINAL BLOCK COVER |
| | | | | | | | | | | 44498 | M3 NUT |
| | | | | | | | | | | 59181 | SWITCH ASSEMBLY |
| | | | | | | | | | | 61222 | M4 PHILIPS SCREW |
| | | | | | | | | | | 61224 | M4 PHILIPS SCREW |
| | | | | | | | | | | 72901 | MOTOR (120V) |
| | | | | | | | | | | 72916 | LAMP CORD UNIT |
| | | | | | | | | | | 72918 | VINYL TUBE |
| | | | | | | | | | | 72936 | LIGHT BULB |
| | | | | | | | | | | 75061 | MOTOR PULLEY |
| | | | | | | | | | | 75062 | INSULATING SHEET |
| | | | | | | | | | | 75078 | MOTOR PULLY FLANGE |
| | | | | | | | | | | 75118 | LAMP PLATE BRACKET |
| | | | | | | | | | | 75137 | TERMINAL BLOCK BRACKET |
| | | | | | | | | | | 75138 | SWITCH BRACKET |
| | | | | | | | | | | 75197 | CORD GUIDE |
| | | | | | | | | | | 75249 | HARNES GUIDE |
| | | | | | | | | | | 75341 | VINYL TUBE |
| | | | | | | | | | | 76703 | MOTOR BELT |
| | | | | | | | | | | 77042 | M4 PHILIPS SCREW |
| | | | | | | | | | | 77057 | M3 PHILIPS SCREW |



| | | | | | | | |
|--------------------|-----------------|------------|------|----------|---------|----------|------------------|
| BUYER'S MODEL NO. | 1 3 2 | SECTION | PAGE | REVISION | REMARKS | PART NO. | DESCRIPTION |
| BUYER'S MODEL NAME | | — | 12 | | | 1939 | RUBBER RING |
| FACTORY MODEL | CA31363 | | | | | 61225 | M4 PHILIPS SCREW |
| ORIGINAL ISSUE | September, 1999 | SERIAL NO. | | | | 64051 | M4 SCREW |
| | | | | | | 64204 | M4 PHILIPS SCREW |
| | | | | | | 68922 | M4 SCREW |



| BUYER'S MODEL NO. | 1 3 2 | SECTION | — | PAGE | 13 | REVISION | | REMARKS | | PART NO. | DESCRIPTION |
|--------------------|-----------------|------------|---|------|----|----------|--|---------|--|----------|----------------------|
| BUYER'S MODEL NAME | | | | | | | | | | 61224 | M4 PHILIPS SCREW |
| FACTORY MODEL | CA31363 | | | | | | | | | 63448 | WASHER |
| ORIGINAL ISSUE | September, 1999 | SERIAL NO. | | | | | | | | 63560 | M4 PHILIPS SCREW |
| | | | | | | | | | | 63736 | TAPPING SCREW |
| | | | | | | | | | | 64360 | TOOTHD WASHER |
| | | | | | | | | | | 68443 | BLADE |
| | | | | | | | | | | 72221 | M4 STUD SCREW |
| | | | | | | | | | | 72791 | M4 SCREW |
| | | | | | | | | | | 75127 | LEAF SPRING |
| | | | | | | | | | | 75128 | SECURING PLATE |
| | | | | | | | | | | 75178 | PIN |
| | | | | | | | | | | 75216 | REFLECTION SHEET |
| | | | | | | | | | | 75224 | TAPPING SCREW |
| | | | | | | | | | | 75236 | PIN |
| | | | | | | | | | | 75274 | M4 SCREW WITH WASHER |
| | | | | | | | | | | 76440 | PLASTICS COLLAR |
| | | | | | | | | | | 76738 | SIDE COVER |
| | | | | | | | | | | 76742 | HANDLE |
| | | | | | | | | | | 76743 | SHUTTLE RACE COVER |
| | | | | | | | | | | 76800 | FACE COVER |
| | | | | | | | | | | 76801 | CONTROL PLATE |
| | | | | | | | | | | 76802 | PLATE |
| | | | | | | | | | | 77042 | M4 PHILIPS SCREW |

