

BUYER'S MODEL NO. 132Q

FACTORY MODEL CA31460

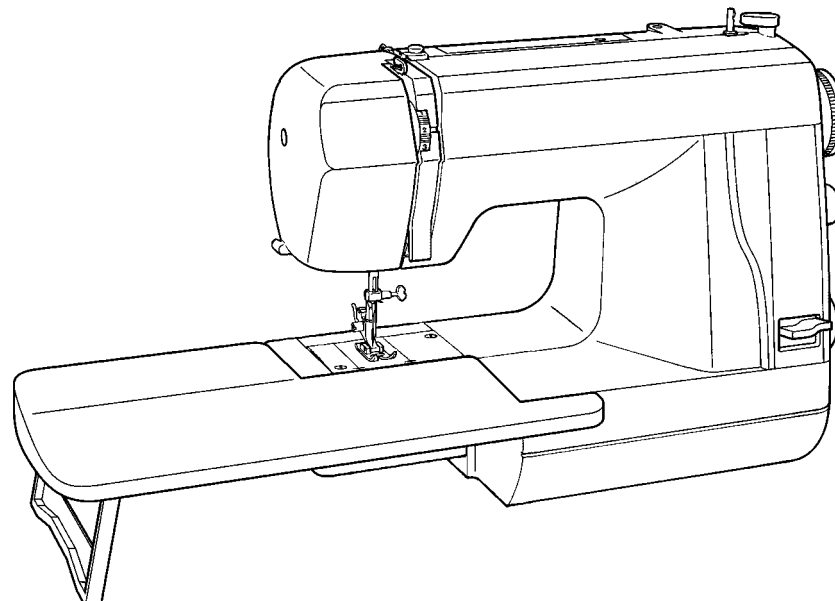
ORIGINAL ISSUE

April,2001

SECTION —

REFER TO IMPORTANT NOTICE BELOW

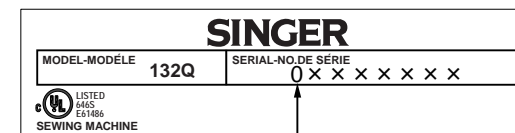
PARTS LIST
FOR
featherweight
Model 132Q



IMPORTANT:

WHEN ORDERING THE PARTS
ALWAYS CHECK THE SERIAL
NUMBER OF THE MACHINE.

FIRST DIGIT OF THE SERIAL
NUMBER MUST MATCH WITH THE
LAST DIGIT OF THE FACTORY
MODEL ABOVE.

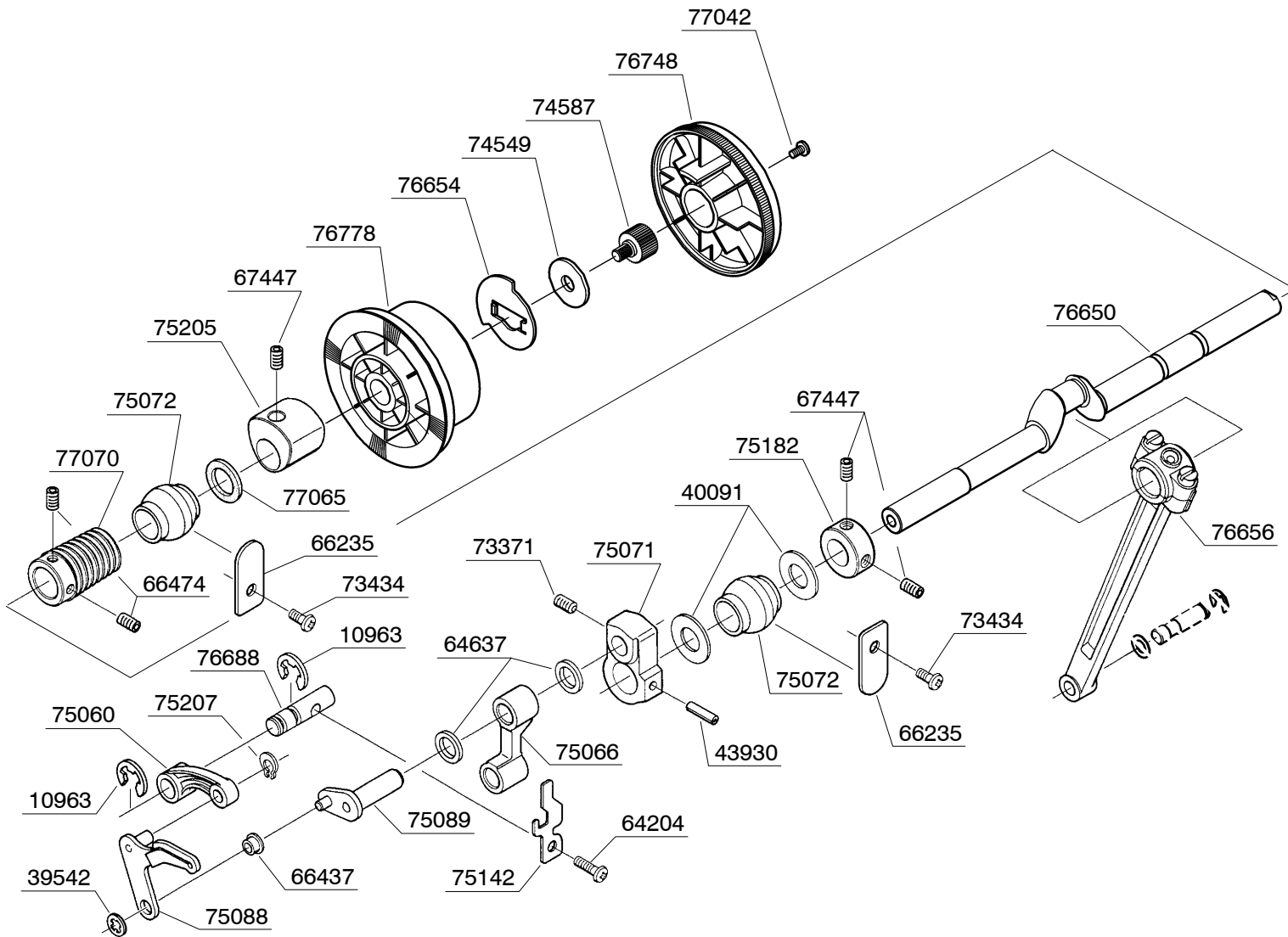


FIRST DIGIT

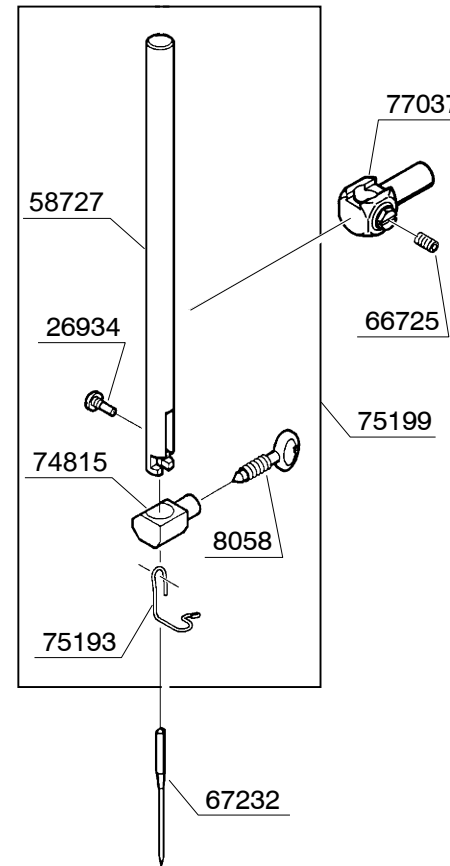
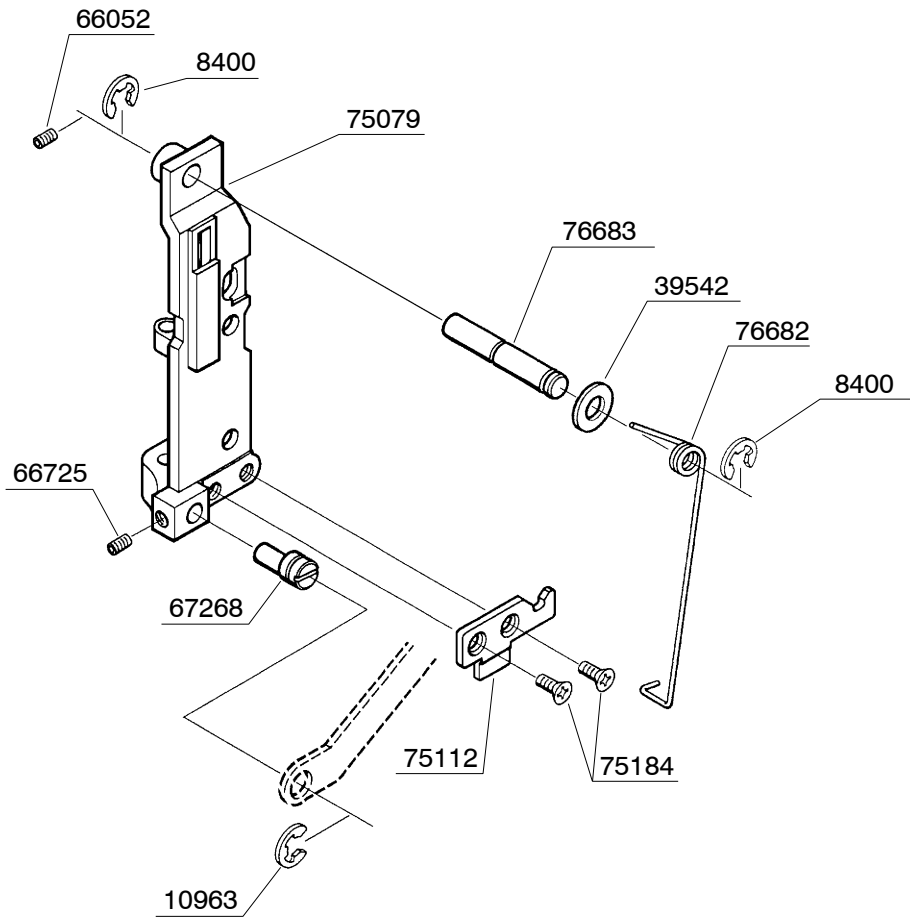
SINGER

BUYER'S MODEL NO.	1 3 2 Q	SECTION	PAGE	REVISION	REMARKS	PART NO.	DESCRIPTION
BUYER'S MODEL NAME		—	1			61225	M4 PHILIPS SCREW
FACTORY MODEL	CA31460						66124
ORIGINAL ISSUE	April,2001	SERIAL NO.				66481	M4 STUD SCREW
						73299	M4 TORQUE NUT
						75121	LEAF SPRING
						75218	RUBBER CUSHION
						75275	M4 STUD SCREW
						75636	EXTENSION TABLE COVER
						76744	COVER
						76788	BED COVER
						77042	M4 PHILIPS SCREW
						77042	M4 PHILIPS SCREW
						77042	M4 PHILIPS SCREW
						77042	M4 PHILIPS SCREW

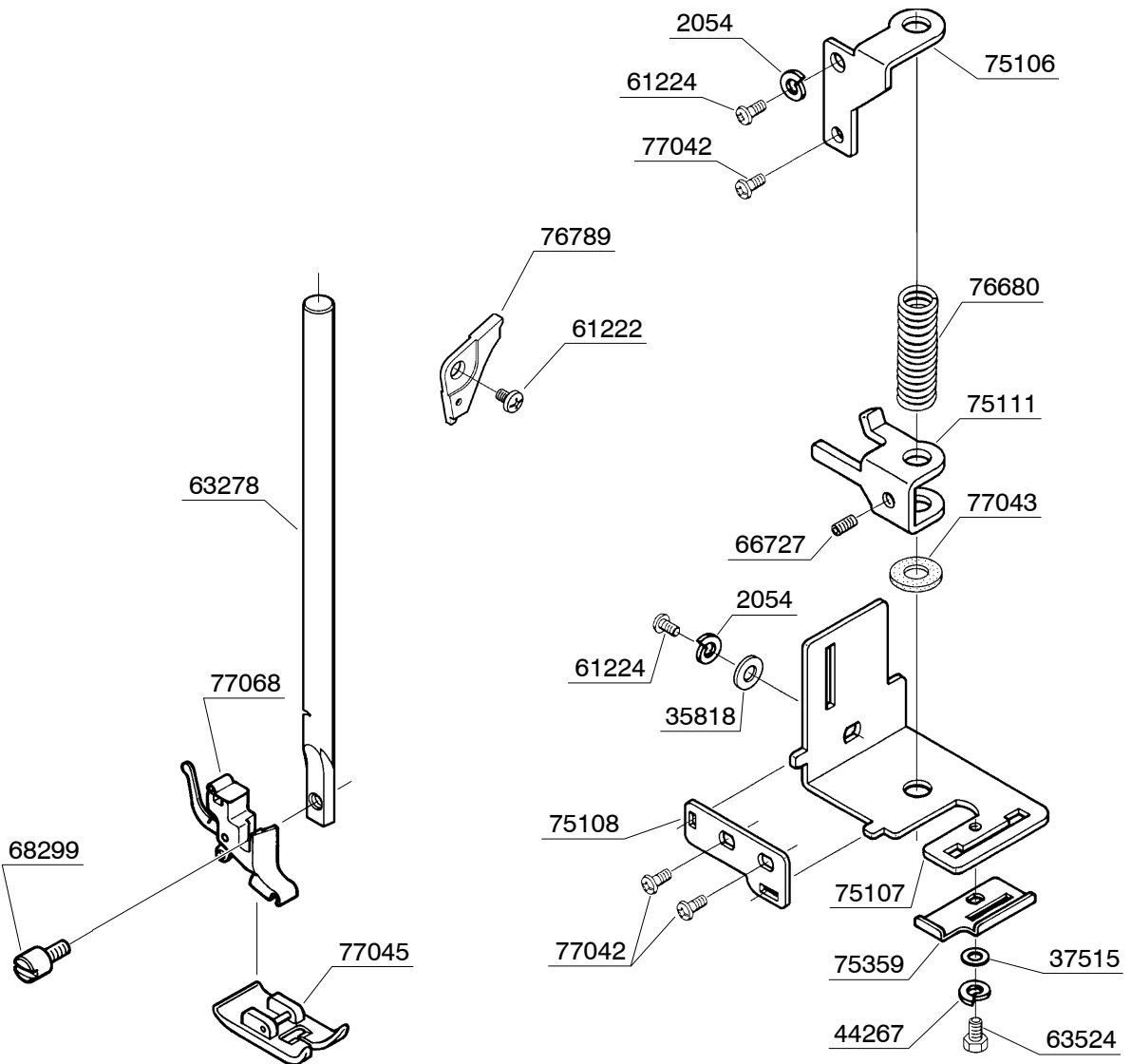
BUYER'S MODEL NO.	1 3 2 Q	SECTION		PAGE	2	REVISION		REMARKS		PART NO.	DESCRIPTION
BUYER'S MODEL NAME										10963	E6 CLIP-ON-WASHER
FACTORY MODEL	CA31460									39542	WASHER
ORIGINAL ISSUE	April,2001	SERIAL NO.								40091	THRUST WASHR
										43930	SPRING PIN
										64204	M4 PHILIPS SCREW
										64637	THRUST WASHR
										66235	SECURING PLATE
										66437	BUSH
										66474	M5 SCREW
										67447	M5 SCREW
										73371	NEEDLE CLAMP
										73434	NEEDLE BAR SUPPORT
										74549	LATCH PLATE
										74587	M4 COUNTERSUNK HEAD SCREW
										75060	THREAD GUIDE
										75066	NEEDLE BAR ASSEMBLY
										75071	TORSION SPRING
										75072	SHAFT
										75088	NEEDLE BAR CLAMP
										75089	CRANK SHAFT
										75142	CORD GUIDE
										75182	COLLAR
										75205	FEED REGULATING CAM
										75207	CS-CLIP
										76650	MAIN SHAFT
										76654	WASHER
										76656	CONNECTING ROD
										76688	SHAFT
										76748	HAND WHEEL
										76778	BELT PULLEY
										77042	M4 PHILIPS SCREW
										77065	FELT
										77070	SPIRAL GEAR



BUYER'S MODEL NO.	1 3 2 Q	SECTION	PAGE	REVISION	REMARKS	PART NO.	DESCRIPTION
BUYER'S MODEL NAME		—	3			8058	NEEDLE CLAMP SCREW
FACTORY MODEL	CA31460					8400	E5 CLIP-ON-WASHER
ORIGINAL ISSUE	April,2001	SERIAL NO.				10963	E6 CLIP-ON-WASHER
						26934	#8 SCREW
						39542	WASHER
						58727	NEEDLE BAR
						66052	M4 SCREW
						66725	M4 SCREW
						67232	NEEDLE
						67268	ECCENTRIC PIN
						74815	NEEDLE CLAMP
						75079	NEEDLE BAR SUPPORT
						75112	LATCH PLATE
						75184	M4 COUNTERSUNK HEAD SCREW
						75193	THREAD GUIDE
						75199	NEEDLE BAR ASSEMBLY
						76682	TORSION SPRING
						76683	SHAFT
						77037	NEEDLE BAR CLAMP



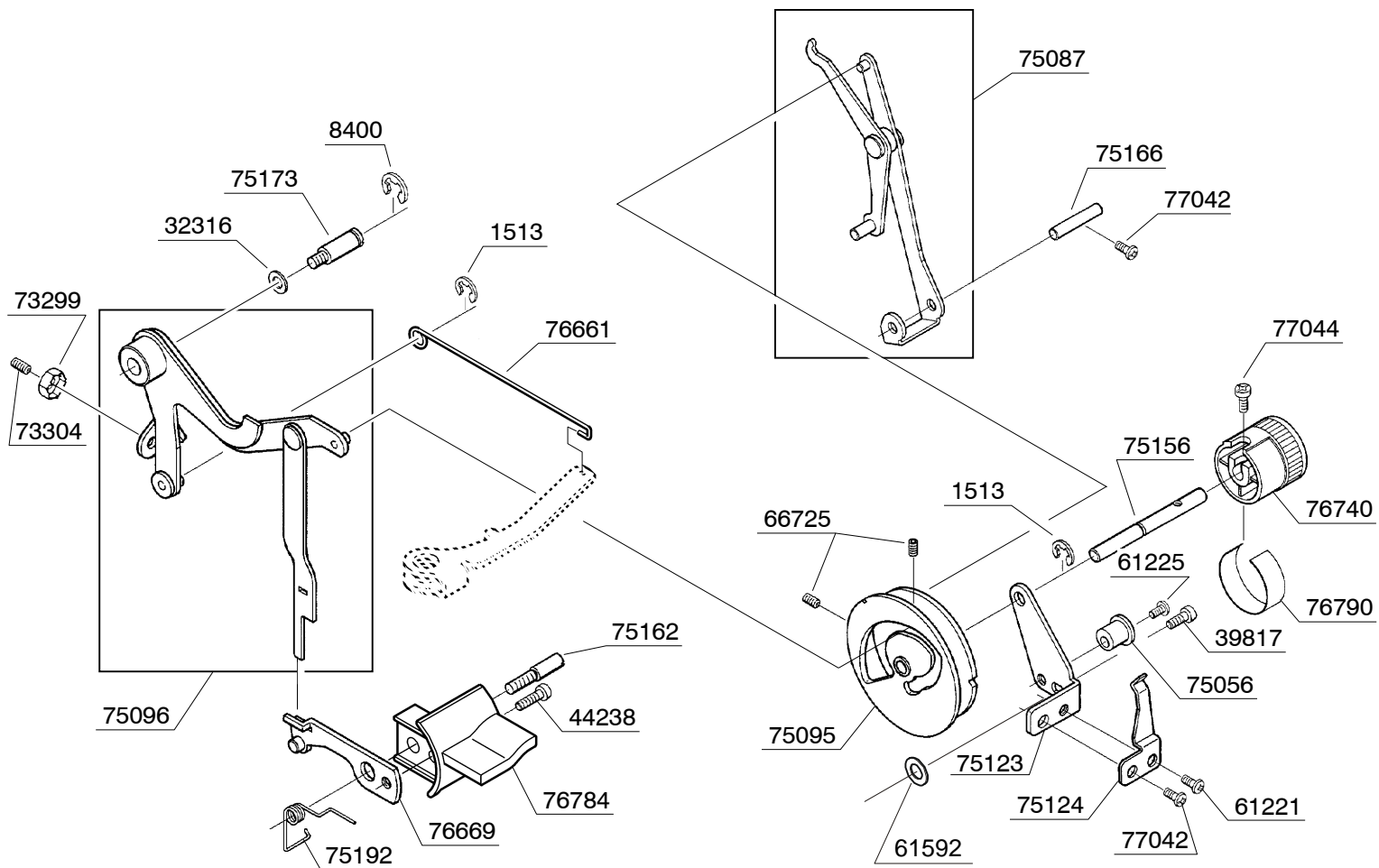
BUYER'S MODEL NO.	1 3 2 Q	SECTION	—	PAGE	4	REVISION		REMARKS		PART NO.	DESCRIPTION
BUYER'S MODEL NAME										2054	SPRING WASHER
FACTORY MODEL	CA31460									35818	WASHER
ORIGINAL ISSUE	April,2001	SERIAL NO.								37515	WASHER
										44267	SPRING WASHER
										61222	M4 PHILIPS SCREW
										61224	M4 PHILIPS SCREW
										63278	PRESSER BAR
										63524	M3 BOLT
										66727	M4 SCREW
										68299	#7 SCREW FOR SHANK
										75106	PRESSER BAR GUIDE
										75107	BRACKET A
										75108	BRACKET B
										75111	PRESSER BAR GUIDE BLOCK
										75359	STOPPER
										76680	COMPRESSION SPRING
										76789	LEVER CAP
										77042	M4 PHILIPS SCREW
										77043	FELT
										77045	ZIGZAG PRESSER FOOT
										77068	SHANK



BUYER'S MODEL NO.	1 3 2 Q	SECTION		PAGE	5	REVISION		REMARKS		PART NO.	DESCRIPTION	
BUYER'S MODEL NAME										47	SHUTTLE HOOK	
FACTORY MODEL	CA31460									8400	E5 CLIP-ON-WASHER	
ORIGINAL ISSUE	April,2001	SERIAL NO.								32316	WASHER	
										43390	THRUST WASHER	
										47910	BOBBIN CASE	
											61770	BALL BUSHING
											63561	M4 PHILIPS SCREW WITH WASHER
											64637	THRUST WASHER
											66474	M5 SCREW
											66725	M4 SCREW
											66727	M4 SCREW
											67411	SPIRAL GEAR
											67412	COLLAR
											67447	M5 SCREW
											73434	M4 PHILIPS SCREW
											73973	M4 BOLT
											75074	BUSHING
											75076	FEED-DOG LIFTING CAM
											75113	SECURING PLATE A
											75114	SECURING PLATE B
											75204	BEVEL GEAR
											75241	SHUTTLE DRIVER
											76281	BOBBIN
											76668	LOWER SHAFT ROCKER
											76681	HEADED PIN
76687	SHUTTLE RACE ASSEMBLY											
76698	COLLAR											
76699	LOWER SHAFT											
77065	FELT											

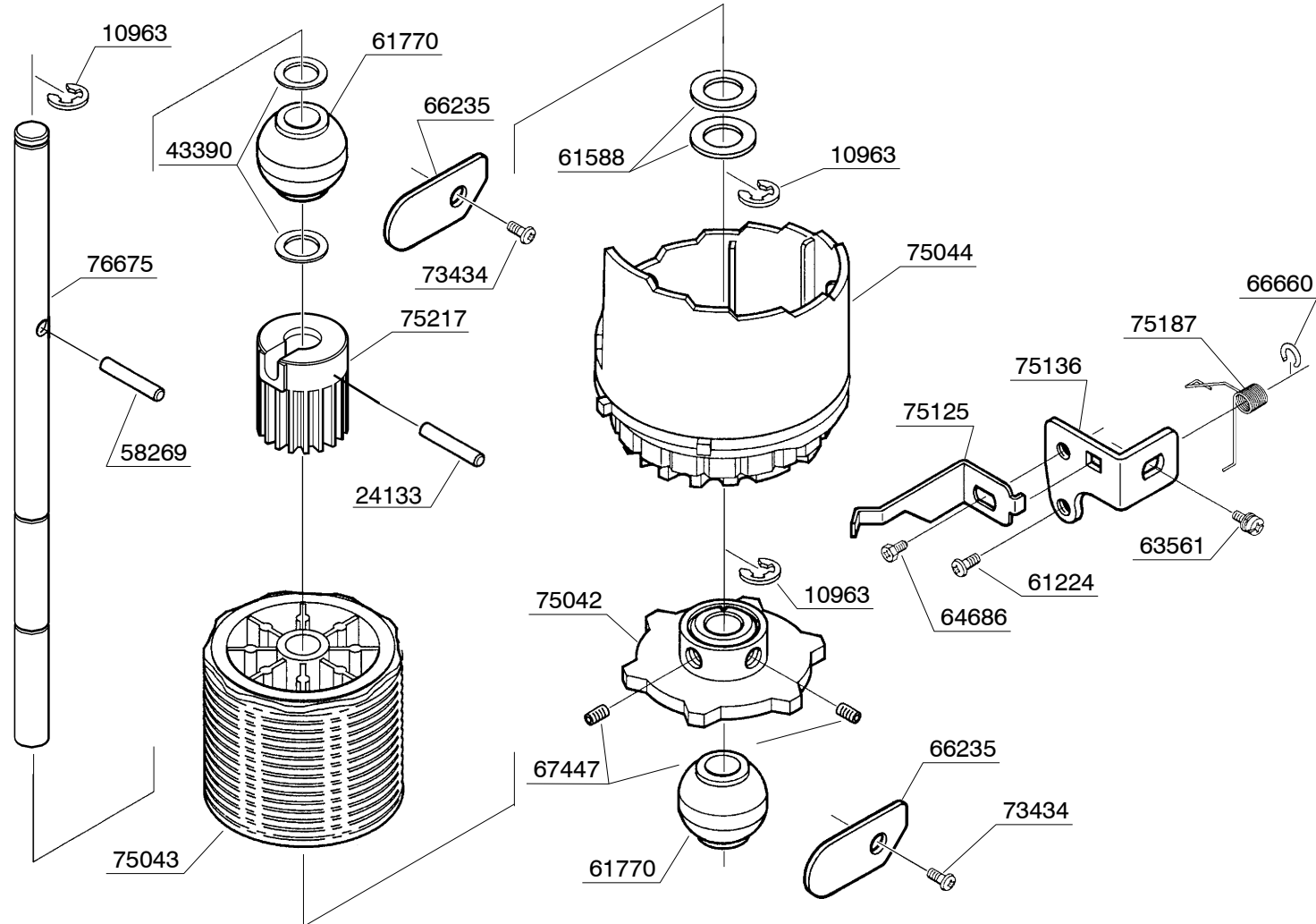
BUYER'S MODEL NO.	1 3 2 Q	SECTION		PAGE	6	REVISION		REMARKS		PART NO.	DESCRIPTION
BUYER'S MODEL NAME										1513	E4 CLIP-ON-WASHER
FACTORY MODEL	CA31460									1520	E3 CLIP-ON-WASHER
ORIGINAL ISSUE	April,2001	SERIAL NO.								8400	E5 CLIP-ON-WASHER
										10963	E6 CLIP-ON-WASHER
										53321	THRUST WASHER
										61224	M4 PHILIPS SCREW
										61770	BALL BUSHING
										62215	M4 NUT
										64637	THRUST WASHER
										66235	SECURING PLATE
										66727	M4 SCREW
										67251	M3.5 PHILIPS SCREW
										67394	M5 PHILIPS SCREW
										67401	EXTENSION SPRING
										67406	M4 PHILIPS SCREW
										67511	EXTENSION SPRING
										73208	M4 PHILIPS SCREW
										73434	M4 PHILIPS SCREW
										73944	THRUST WASHER
										74388	SECURING PLATE
										75067	FEED REGULATOR
										75069	FEED REGULATING SHAFT ROCKER
										75073	BUSHING
										75081	FEED-DOG
										75091	SECURING PLATE
75094	FEED REGULATING ROD										
75115	SECURING PLATE C										
75169	HEADED PIN										
75186	COMPRESSION SPRING										
75190	TORSION SPRING										
75200	COMPRESSION SPRING										
76657	FEED-DOG LIFTING ARM BRACKET										
76659	FEED REGULATING BRACKET										
76677	FEED REGULATING SHAFT										
76684	SHAFT										
76700	SHAFT										
77039	SLIDE BLOCK										
77042	M4 PHILIPS SCREW										

BUYER'S MODEL NO.	1 3 2 Q	SECTION		PAGE	7	REVISION		REMARKS		PART NO.	DESCRIPTION
BUYER'S MODEL NAME										1513	E4 CLIP-ON-WASHER
FACTORY MODEL	CA31460									8400	E5 CLIP-ON-WASHER
ORIGINAL ISSUE	April,2001	SERIAL NO.								32316	WASHER
										39817	M4 PHILIPS SCREW
										44238	M4 PHILIPS SCREW
										61221	M4 PHILIPS SCREW
										61225	M4 PHILIPS SCREW
										61592	WASHER
										66725	M4 SCREW
										73299	M4 TORQUE NUT
										73304	M4 SCREW
										75056	ECCENTRIC IDLER PULLEY
										75087	STRETCH STITCH CONTROL LINK ASSEMBLY
										75095	STITCH LENGTH CONTROL CAM
										75096	FEED CONTROL LINK ASSEMBLY
										75123	CONTROL DIAL BRACKET
										75124	LEAF SPRING
										75156	SHAFT
										75162	M4 STUD SCREW
										75166	SHAFT
										75173	M4 STUD SCREW
										76192	TORSION SPRING
										76661	BH WIRE ROD
										76669	REVERSE STITCH ARM
										76740	STITCH LENGTH CONTROL DIAL
										76784	REVERSE STITCH LEVER
										76790	SEAL
										77042	M4 PHILIPS SCREW
										77044	M3 PHILIPS SCREW



BUYER'S MODEL NO.	1 3 2 Q	SECTION	PAGE	REVISION	REMARKS	PART NO.	DESCRIPTION		
BUYER'S MODEL NAME		—	8			1393	SPRING PIN		
FACTORY MODEL	CA31460					1513	E4 CLIP-ON-WASHER		
ORIGINAL ISSUE	April,2001	SERIAL NO.				8400	E5 CLIP-ON-WASHER		
<p>The diagram shows an exploded view of a mechanical assembly. Key components include a long shaft (76701) with a bevel gear (76655) at one end and a pattern selecting dial (76739) at the other. A torsion spring (76679) is attached to the shaft. A belt roller (75055) is mounted on the shaft. A thrust washer (73944) is positioned between the roller and the dial. A seal (76803) is located near the dial. A spring pin (1393) is used to secure the dial. A clip-on washer (1513) is used to secure the roller. A Phillips screw (77042) is used to secure the dial. A gear (75083) is mounted on the shaft. An indicator (75214) is mounted on the shaft. A shaft (76702) is used to connect the roller to the dial. A washer (73944) is used to secure the roller. A screw (77042) is used to secure the dial. A spring pin (1393) is used to secure the dial. A clip-on washer (1513) is used to secure the roller. A seal (76803) is located near the dial. A gear (75083) is mounted on the shaft. An indicator (75214) is mounted on the shaft. A shaft (76702) is used to connect the roller to the dial. A washer (73944) is used to secure the roller. A screw (77042) is used to secure the dial. A spring pin (1393) is used to secure the dial. A clip-on washer (1513) is used to secure the roller.</p>						61333	M4 SCREW		
								61343	M4 SCREW
								73944	THRUST WSHER
								75055	BELT ROLLER
								75083	GEAR A
								75214	INDICATOR
								76655	BEVEL GEAR
								76678	SHAFT
								76679	TORSION SPRING
								76701	BELT
								76702	SHAFT
								76739	PATTERN SELECTING DIAL
								76803	SEAL
								77042	M4 PHILIPS SCREW

BUYER'S MODEL NO.	1 3 2 Q	SECTION	PAGE	REVISION	REMARKS	PART NO.	DESCRIPTION
BUYER'S MODEL NAME		—	9			10963	E4 CLIP-ON-WASHER
FACTORY MODEL	CA31460						24133
ORIGINAL ISSUE	April,2001	SERIAL NO.				43390	THRUST WASHER
						58269	SPRING PIN
						61224	M4 PHILIPS SCREW
						61588	WASHER
						61770	BALL BUSHING
						63561	M4 PHILIPS SCREW WITH WASHER
						64686	M4 BOLT
						66235	SECURING PLATE
						66660	CLIP-ON-WASHER
						67447	M5 SCREW
						73434	M4 PHILIPS SCREW
						75042	STRETCH STITCHING CAM
						75043	PATTERN CAM
						75044	PATTERN SELECTING CAM
						75125	LEAF SPRING
						75136	BRACKET
						75187	TORSION SPRING
						75217	WORM GEAR
						76675	SHAFT



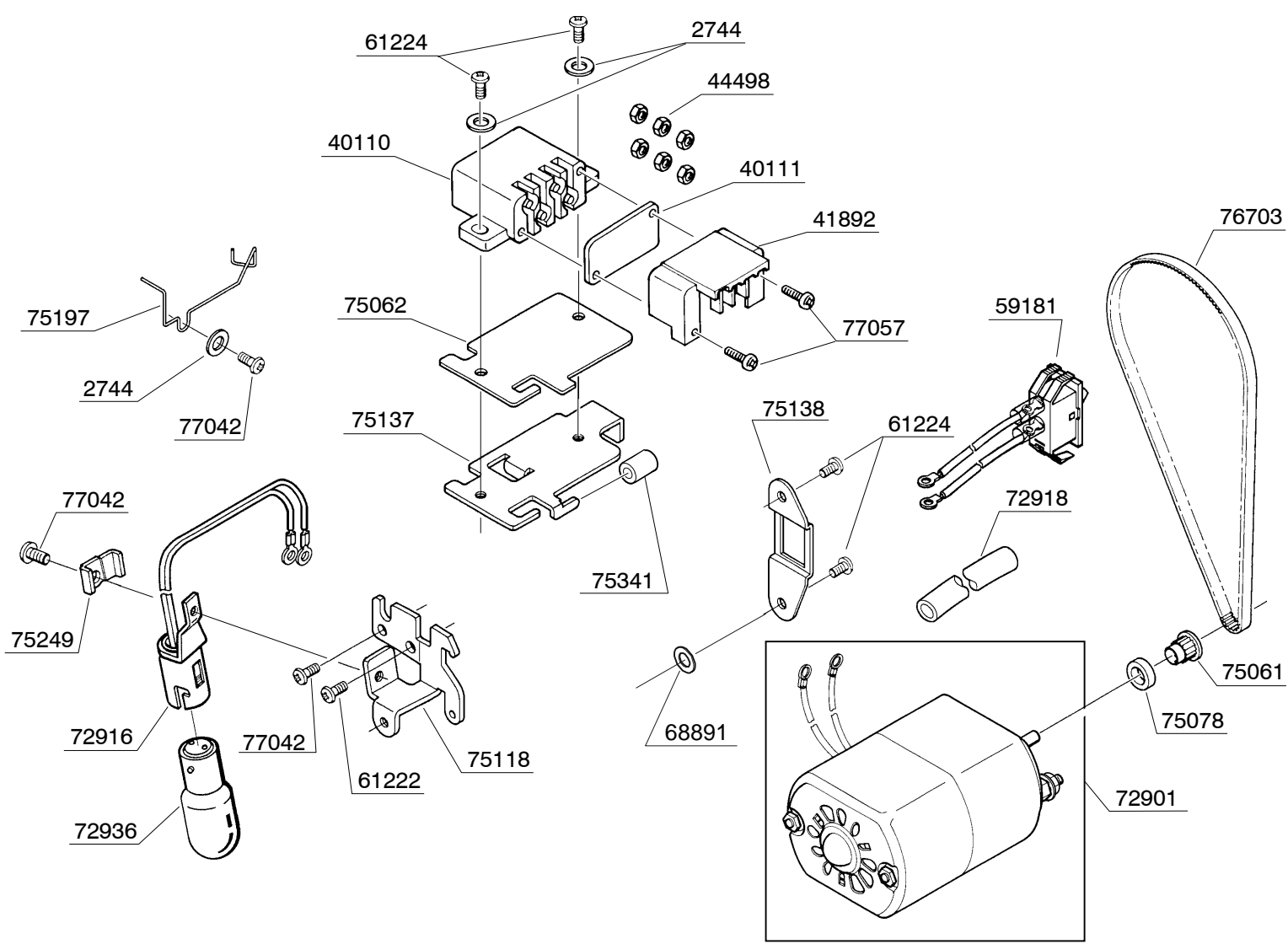
BUYER'S MODEL NO.	1 3 2 Q	SECTION	PAGE	REVISION	REMARKS	PART NO.	DESCRIPTION
BUYER'S MODEL NAME		—	10			1513	E4 CLIP-ON-WASHER
FACTORY MODEL	CA31460					10963	E6 CLIP-ON-WASHER
ORIGINAL ISSUE	April,2001	SERIAL NO.				39163	TAPPING SCREW
						53321	THRUST WASHER
						58269	SPRING PIN
						61588	THRUST WASHER
						64204	M4 PHILIPS SCREW
						64637	THRUST WASHER
						68922	M4 SCREW
						73299	M4 TORQUE NUT
						75057	ZIGZAG GUIDE BLOCK
						75064	PATTERN SELECTING CAM CLAW
						75099	PATTERN CAM FOLLOWER
						75120	CAM FOLLOWER GUIDE BRACKET
						75165	SHAFT B
						75189	EXTENSION SPRING
						76658	STRETCH STITCHING CAM FOLLOWER
						76660	BH CAM FOLLOWER
						76666	ZIGZAG GUIDE BAR
						76676	SHAFT A

The diagram shows an exploded view of a mechanical assembly. Key components include:

- 76666**: Zigzag Guide Bar, shown as a long, thin, curved metal bar.
- 75120**: Cam Follower Guide Bracket, a vertical plate with various mounting points.
- 75165**: Shaft B, a vertical shaft passing through the assembly.
- 76676**: Shaft A, a vertical shaft passing through the assembly.
- 75099**: Pattern Cam Follower, a component that interacts with the cam.
- 75057**: Zigzag Guide Block, a component that guides the zigzag bar.
- 75064**: Pattern Selecting Cam Claw, a component that selects patterns.
- 75189**: Extension Spring, a coiled spring.
- 76658**: Stretch Stitching Cam Follower, a component that follows the cam.
- 76660**: BH Cam Follower, another cam follower component.

Other labeled parts include: 1513 (E4 Clip-on-washer), 10963 (E6 Clip-on-washer), 39163 (Tapping screw), 53321 (Thrust washer), 58269 (Spring pin), 61588 (Thrust washer), 64204 (M4 Philips screw), 64637 (Thrust washer), 68922 (M4 screw), 73299 (M4 torque nut), 76660 (BH Cam follower), 76676 (Shaft A), 76658 (Stretch stitching cam follower), 75120 (Cam follower guide bracket), 75099 (Pattern cam follower), 75064 (Pattern selecting cam claw), 75057 (Zigzag guide block), and 75165 (Shaft B).

BUYER'S MODEL NO.	1 3 2 Q	SECTION	PAGE	REVISION	REMARKS	PART NO.	DESCRIPTION
BUYER'S MODEL NAME		—	11			2744	WASHER
FACTORY MODEL	CA31460					40110	TERMINAL BLOCK ASSEMBLY
ORIGINAL ISSUE	April,2001	SERIAL NO.				40111	TERMINAL BLOCK COVER
						41892	TERMINAL BLOCK COVER
						44498	M3 NUT
						59181	SWITCH ASSEMBLY
						61222	M4 PHILIPS SCREW
						61224	M4 PHILIPS SCREW
						68891	WASHER
						72901	MOTOR(120V)
						72916	LAMP CORD UNIT
						72918	VINYL TUBE
						72936	LIGHT BULB
						75061	MOTOR PULLEY
						75062	INSULATING SHEET
						75078	MOTOR PULLEY FLANGE
						75118	LAMP PLATE BRACKET
						75137	TERMINAL BLOCK BRACKET
						75138	SWITCH BRACKET
						75197	CORD GUIDE
						75249	HARNES GUIDE
						75341	VINYL TUBE
						76703	MOTOR BELT
						77042	M4 PHILIPS SCREW
						77057	M3 PHILIPS SCREW



BUYER'S MODEL NO.	1 3 2 Q	SECTION	PAGE	REVISION	REMARKS	PART NO.	DESCRIPTION
BUYER'S MODEL NAME		—	12			1939	RUBBER RING
FACTORY MODEL	CA31460					62215	M4 NUT
ORIGINAL ISSUE	April,2001	SERIAL NO.				64051	M4 SCREW
						64204	M4 PHILIPS SCREW
						68922	M4 SCREW
						72266	M4 STUD SCREW
						75117	PLATE
						75196	TORSION SPRING
						75213	THREAD GUIDE PLATE
						75273	PRESSER FOOT LIFTER
						75334	THREAD GUIDE PLATE STOPPER
						75350	STOPPER
						75640	VINYL TUBE
						76653	TENSION RELEASE LEVER
						76685	M4 STUD WASHER
						76692	BOBBIN WINDER COMPLETE
						76695	NEEDLE PLATE
						76752	TENSION RELEASE WIRE ROD
						76782	THREAD GUIDE PLATE UNIT
						77042	M4 PHILIPS SCREW

BUYER'S MODEL NO.	1 3 2 Q	SECTION	—	PAGE	13	REVISION		REMARKS		PART NO.	DESCRIPTION	
BUYER'S MODEL NAME										61224	M4 PHILIPS SCREW	
FACTORY MODEL	CA31460									63448	WASHER	
ORIGINAL ISSUE	April,2001	SERIAL NO.								63560	M4 PHILIPS SCREW	
<p>The diagram shows an exploded view of a mechanical assembly. Key components include a handle (76742) with a tapping screw (76395) and washer (63448), a side cover (76738) with a plastic collar (76440) and tapping screws (74795, 75274), a shuttle race cover (76743), a face cover (76800), a control plate (76801) with a plate (76802) and M4 Philips screw (77042), and a shutter mechanism (75127) with a left spring (75127), securing plate (75128), reflection sheet (75216), and pin (75236). Other parts include a toothed washer blade (68443), a pin (75178), and a pin (75236).</p>											64360	TOOTHD WASHER
											72221	M4 STUD SCREW
											72791	M4 SCREW
											74795	TAPPING SCREW
											75127	LEFT SPRING
											75128	SECURING PLATE
											75178	PIN
											75216	REFLECTION SHEET
											75236	PIN
											75274	M4 SCREW WHIT WASHER
											76395	TAPPING SCREW
											76440	PLASTICS COLLAR
											76738	SIDE COVER
											76742	HANDLE
											76743	SHUTTLE RACE COVER
76800	FACE COVER											
76801	CONTROL PLATE											
76802	PLATE											
77042	M4 PHILIPS SCREW											

BUYER'S MODEL NO.	1 3 2 Q	SECTION	PAGE	REVISION	REMARKS	PART NO.	DESCRIPTION
BUYER'S MODEL NAME		—	14			16500	BUTTONHOLE OPENER
FACTORY MODEL	CA31460					50952	ACCESSORY SET
ORIGINAL ISSUE	April,2001	SERIAL NO.				64083	SPOOL PIN
						65650	CLEANING BRUSH
						65811	LARGE SCREW DRIVER
						67233	NEEDLE SET
						69983	BOOK
						72917	FOOT CONTROL
						74793	SMALL SCREW DRIVER
						76281	BOBBIN
						76757	DUST COVER
						76837	EVEN FEED FOOT
						76838	PATCHWORK FOOT
						77040	SPOOL PIN DISC
						77046	ZIPPER FOOT
						77047	BUTTONHOLE FOOT
						77049	BLIND STITCH FOOT